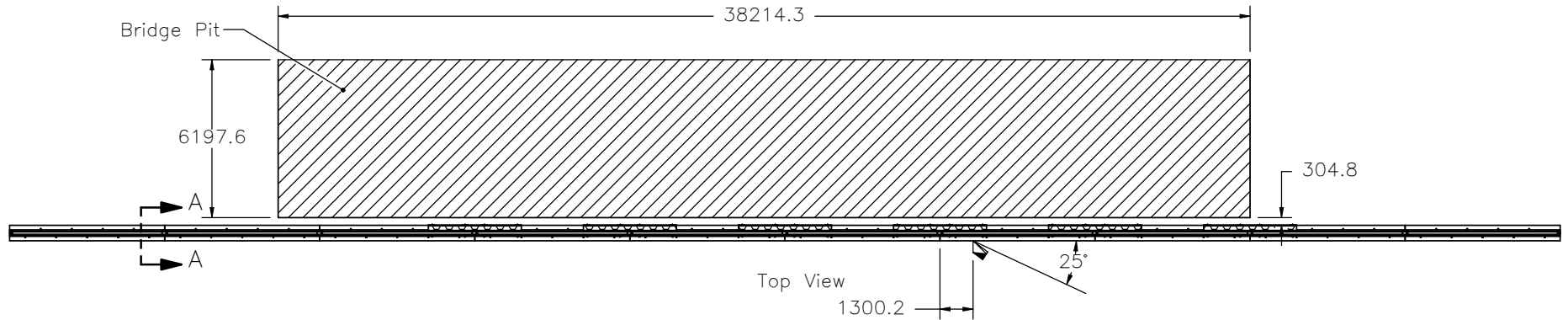
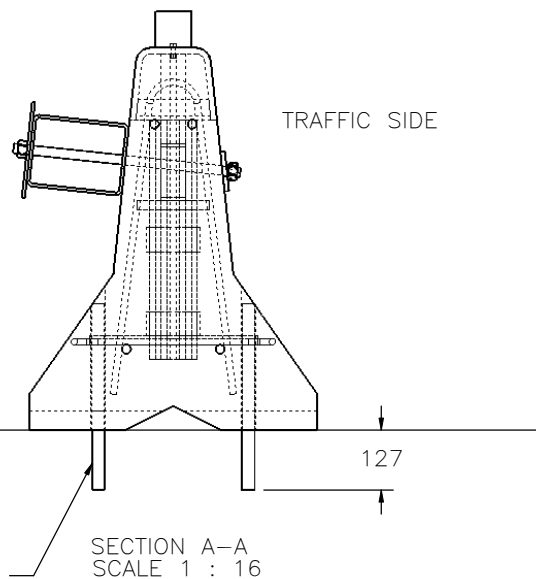


Elevation View



Top View



Sections 1 and 10 only anchored into concrete pad with 9 A36 $\phi 25.4$ x 394mm long unthreaded steel rods set in $\phi 25.4$ x 127mm deep drilled holes.

- Notes: (1) Only sections 1 and 10 are anchored.
 (2) Anchor pins may also be driven 457mm into asphalt surface.
 (3) Barrier numbers with a * notation denote new, undamaged barrier sections.



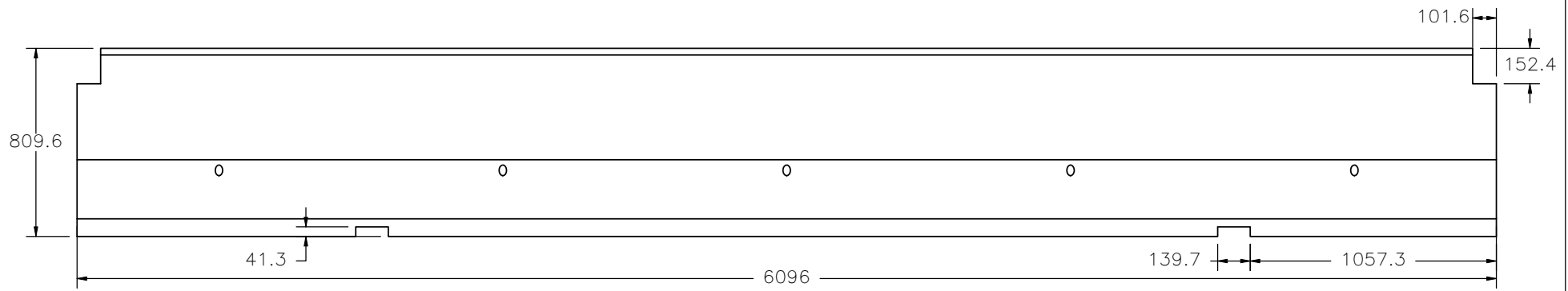
Midwest Roadside Safety Facility

Limited Deflection Stiffened Temporary Concrete Barrier System Layout

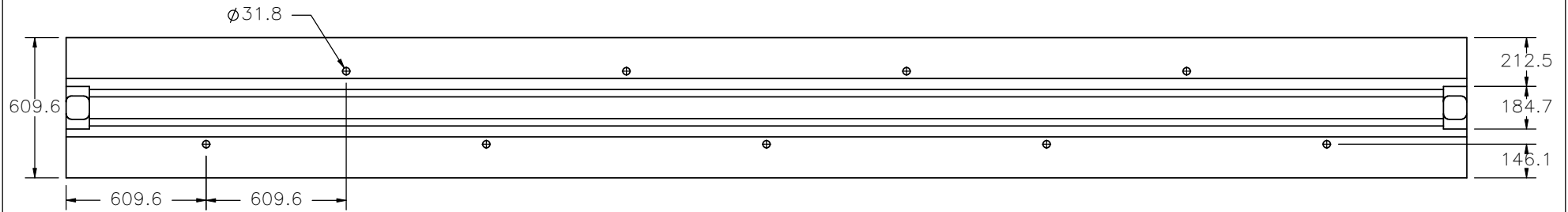
DWG. NAME:
NY-BB-TempBarrier_6x8_R6_metric

SCALE: None
UNITS: mm

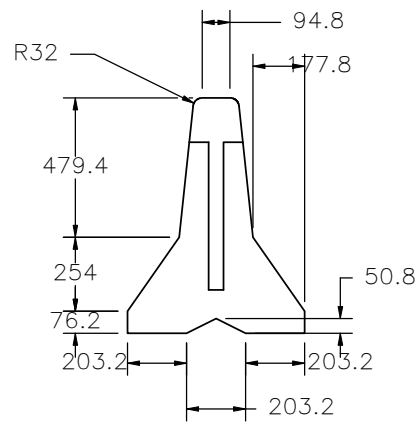
SHEET:
1 of 11
DATE:
2/27/2008
DRAWN BY:
GRA/CSS
REV. BY:
KAP/RKF



Front View



Top View



Side View

Note: (1) Concrete has minimum 28-day compressive strength of 21.0 MPa.



Midwest Roadside Safety Facility

Limited Deflection Stiffened Temporary Concrete Barrier

Concrete Section Part M1

DWG. NAME:
NY-BB-TempBarrier_6x8_R6_metric

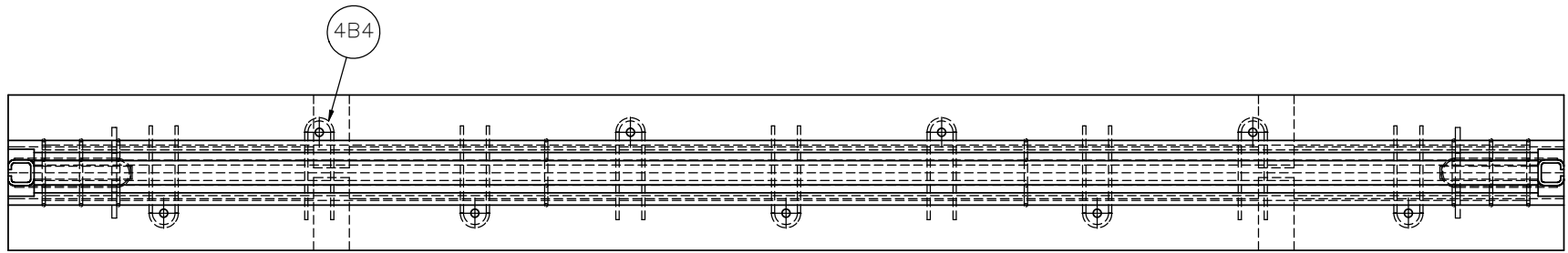
SCALE: None
UNITS: mm

SHEET:
2 of 11

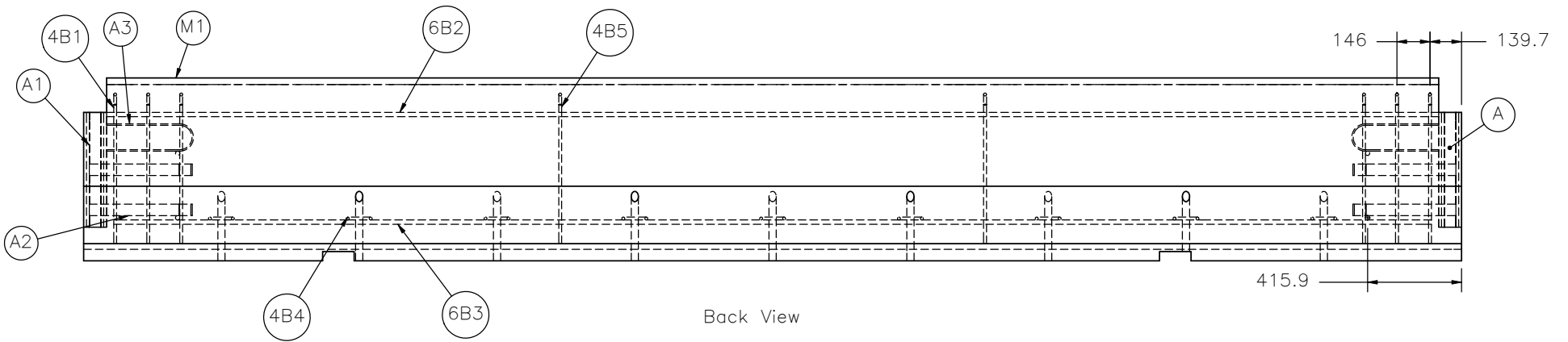
DATE:
2/27/2008

DRAWN BY:
GRA/CSS

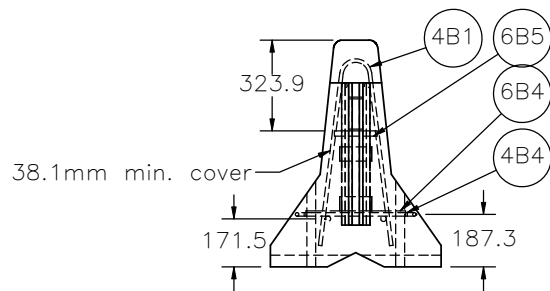
REV. BY:
KAP/RKF



Top View



Back View



End View



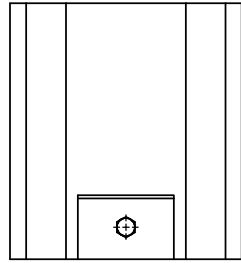
Midwest Roadside
Safety Facility

Limited Deflection Stiffened
Temporary Concrete Barrier
Reinforcement Details

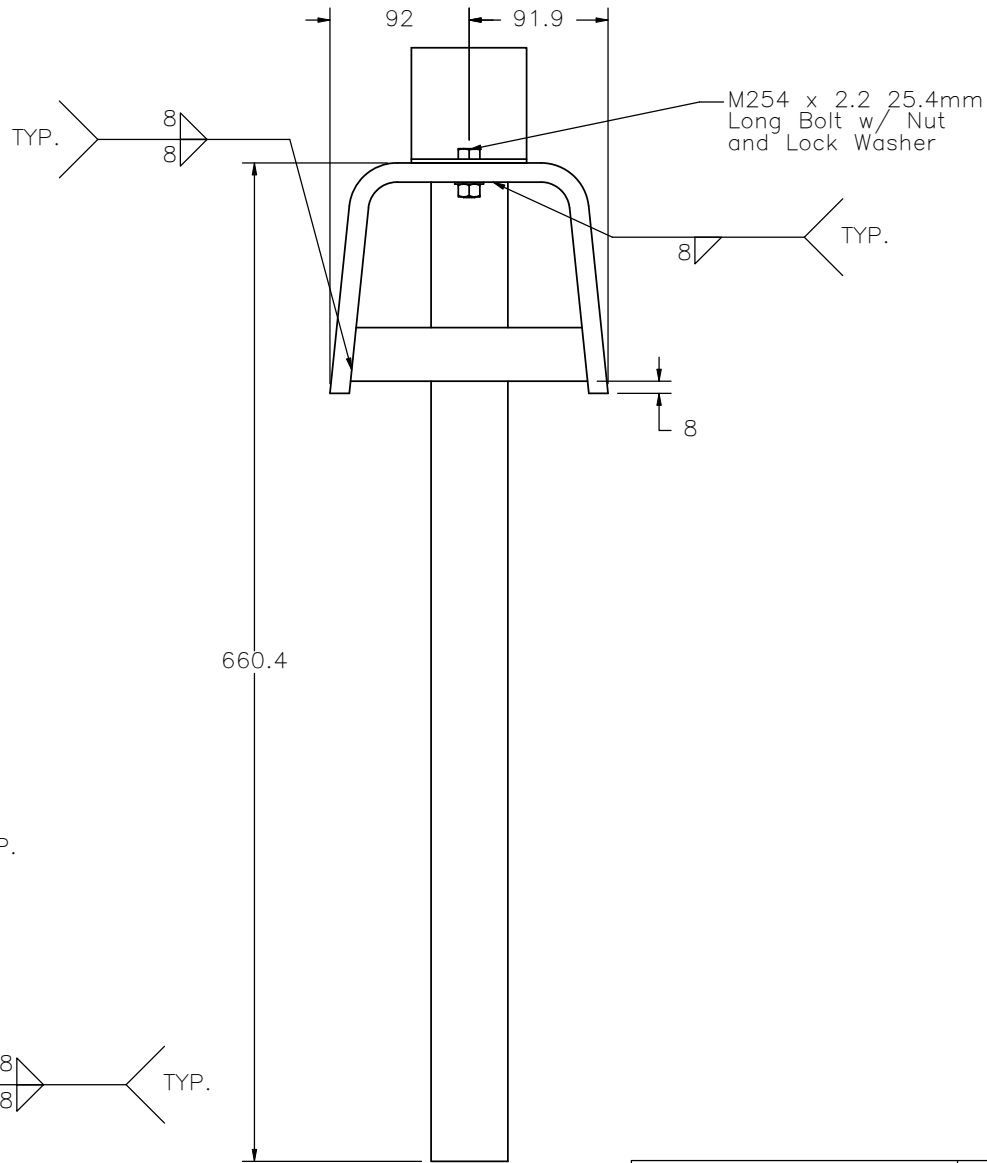
DWG. NAME:
NY-BB-TempBarrier_6x8_R6_metric

SCALE: None
UNITS: mm

SHEET:
3 of 11
DATE:
2/27/2008
DRAWN BY:
GRA/CSS
REV. BY:
KAP/RKF

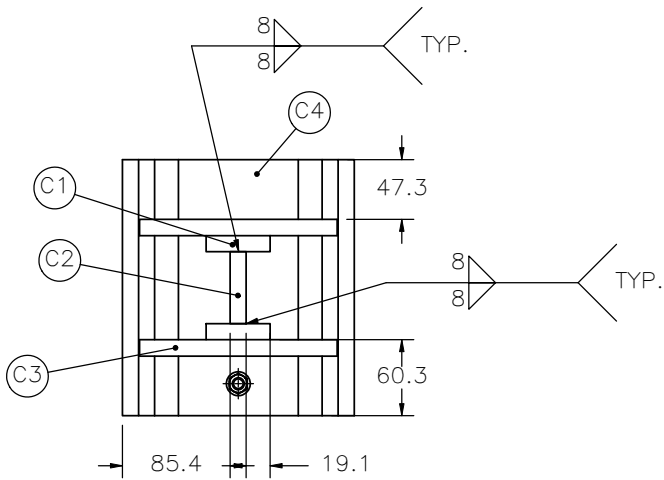


Top View

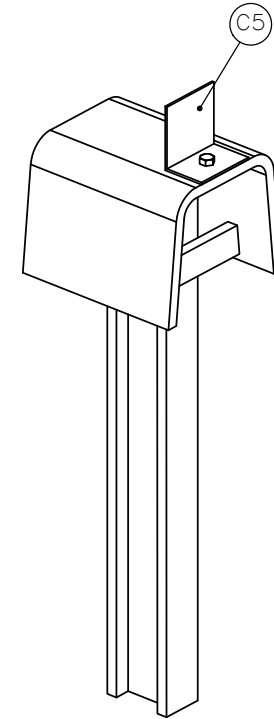


Front View

Part C
Concrete Key



Bottom View



Midwest Roadside
Safety Facility

Limited Deflection Stiffened
Temporary Concrete Barrier
Connection Key Assembly
Part C

DWG. NAME:
NY-BB-TempBarrier_6x8_R6_metric

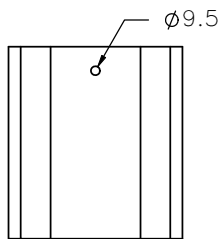
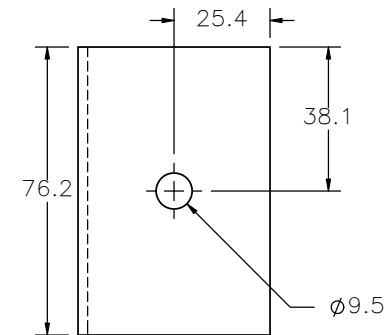
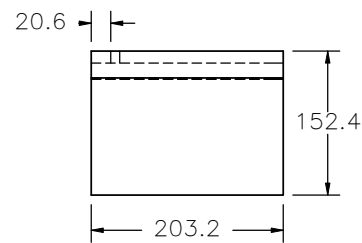
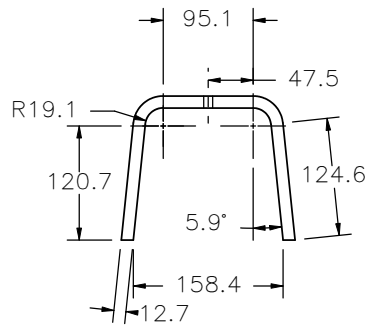
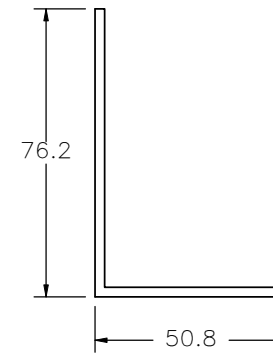
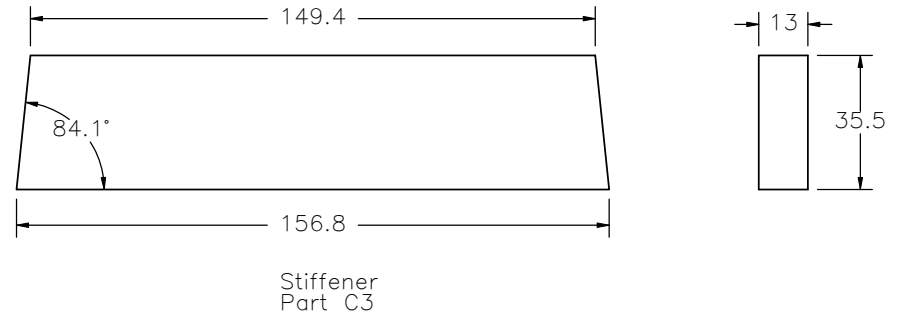
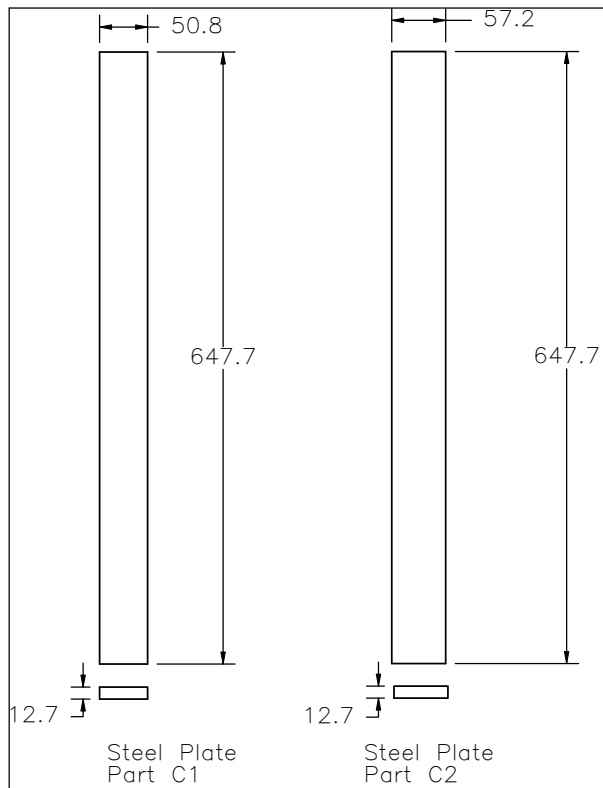
SCALE: None
UNITS: mm

SHEET:
4 of 11

DATE:
2/27/2008

DRAWN BY:
GRA/CSS

REV. BY:
KAP/RKF



Midwest Roadside Safety Facility

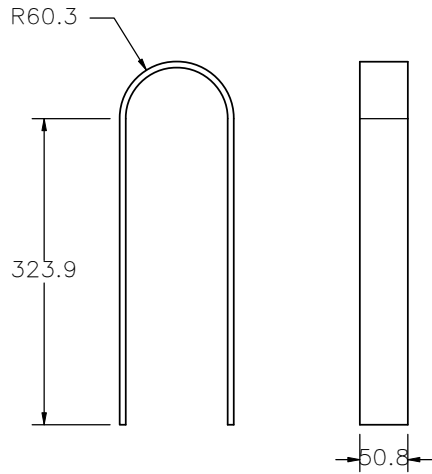
Limited Deflection Stiffened Temporary Concrete Barrier

Connection Key Assembly Components

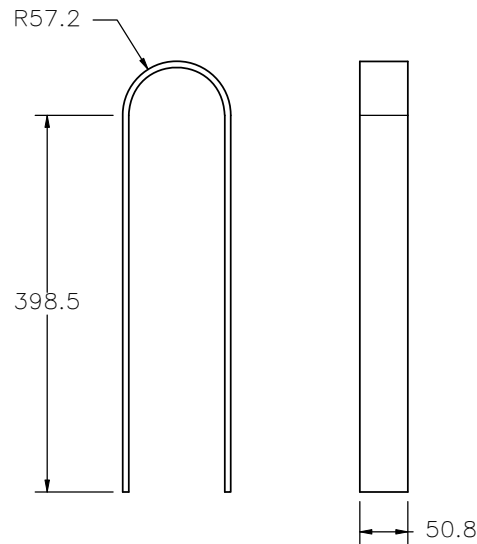
DWG. NAME:
NY-BB-TempBarrier_6x8_R6_metric

SCALE: None
UNITS: mm

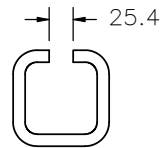
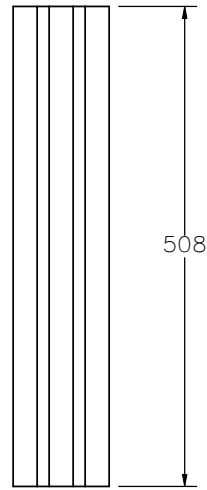
SHEET:
5 of 11
DATE:
2/27/2008
DRAWN BY:
GRA/CSS
REV. BY:
KAP/RKF



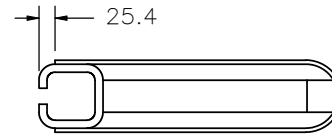
Curved Steel Plate 1
Part A2



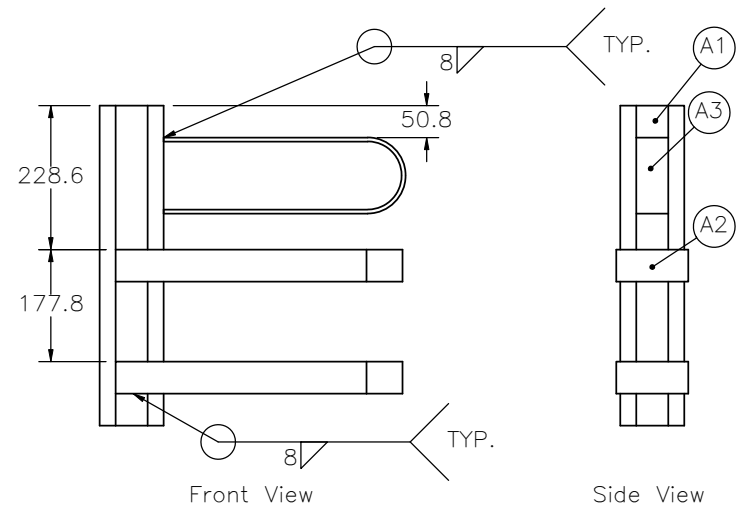
Curved Steel Plate 1
Part A3



102 x 102 x 12.7mm
Tube
Part A1



Top View



Concrete Connector
Part A



Midwest Roadside
Safety Facility

Limited Deflection Stiffened
Temporary Concrete Barrier

Connector Key
Part A

DWG. NAME.
NY-BB-TempBarrier_6x8_R6_metric

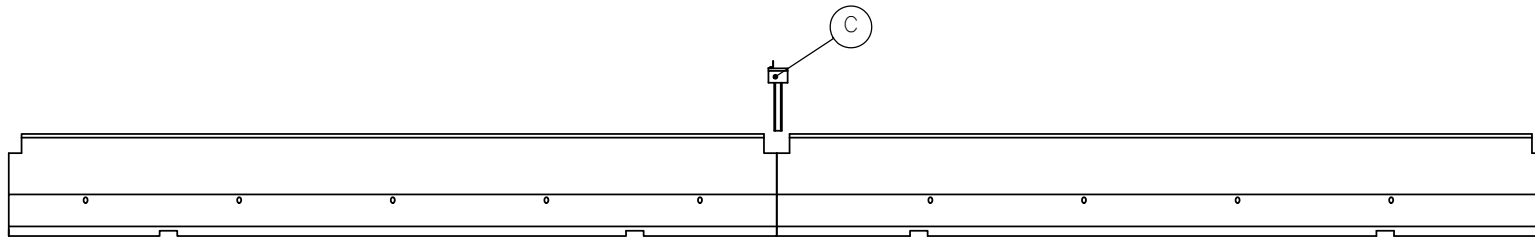
SCALE: None
UNITS: mm

SHEET:
6 of 11

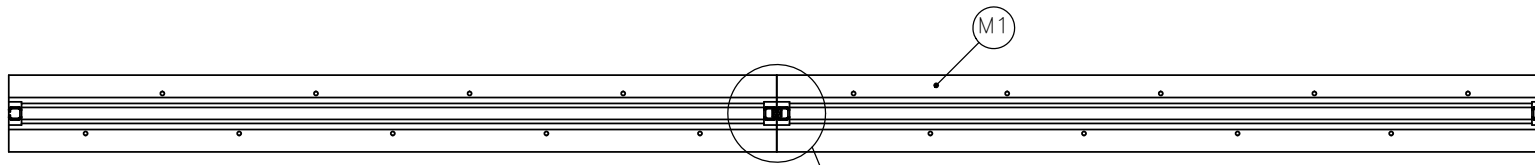
DATE:
2/27/2008

DRAWN BY:
GRA/CSS

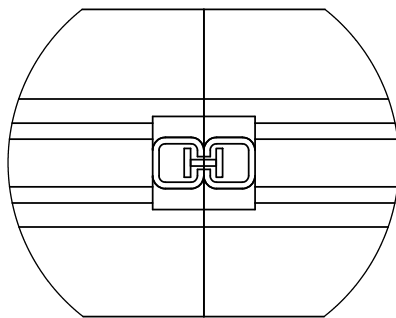
REV. BY:
KAP/RKF



Front View



Top View



DETAIL B
SCALE 1 : 15



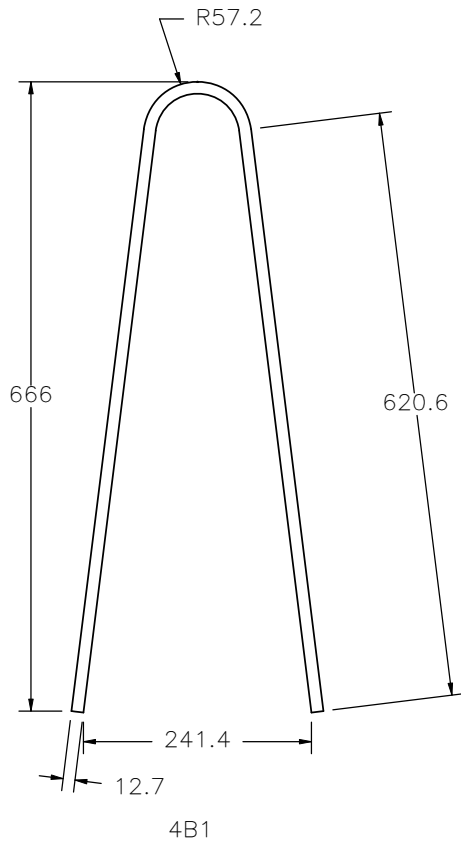
Midwest Roadside
Safety Facility

Limited Deflection Stiffened
Temporary Concrete Barrier
Connection Key

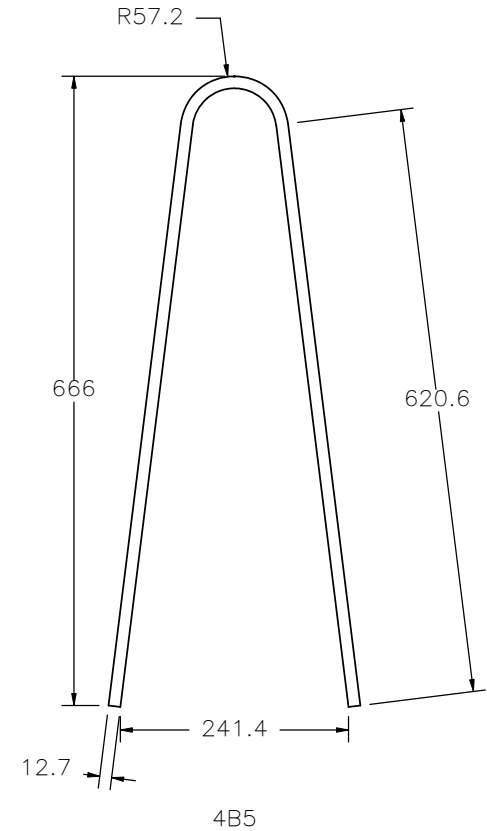
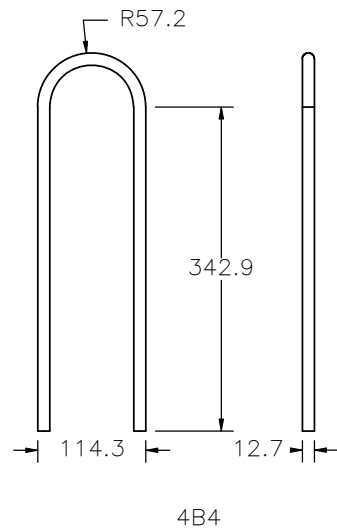
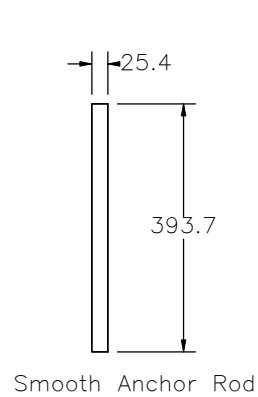
DWG. NAME:
NY-BB-TempBarrier_6x8_R6_metric

SCALE: None
UNITS: mm

SHEET:
7 of 11
DATE:
2/27/2008
DRAWN BY:
GRA/CSS
REV. BY:
KAP/RKF



NY-BB-TempBarrier					
Item No.	Bend Dia.	Qty.	Length	Material Spec	Bar Size
Smooth Anchor Rod	-	18	394mm	A36M	25.4mm
4B1	89mm	60	1407mm	A615 Gr. 60	12.7mm
4B4	89mm	90	868mm	A615 Gr. 60	12.7mm
4B5	89mm	20	1407mm	A615 Gr. 60	12.7mm
6B2	-	20	5893mm	A615 Gr. 60	19mm
6B3	-	20	5830mm	A615 Gr. 60	19mm
6B4	-	20	356mm	A615 Gr. 60	19mm
6B5	-	20	152mm	A615 Gr. 60	19mm



Note: (1) Quantities in Bill of Bars represent a system with 10 barriers.



Midwest Roadside
Safety Facility

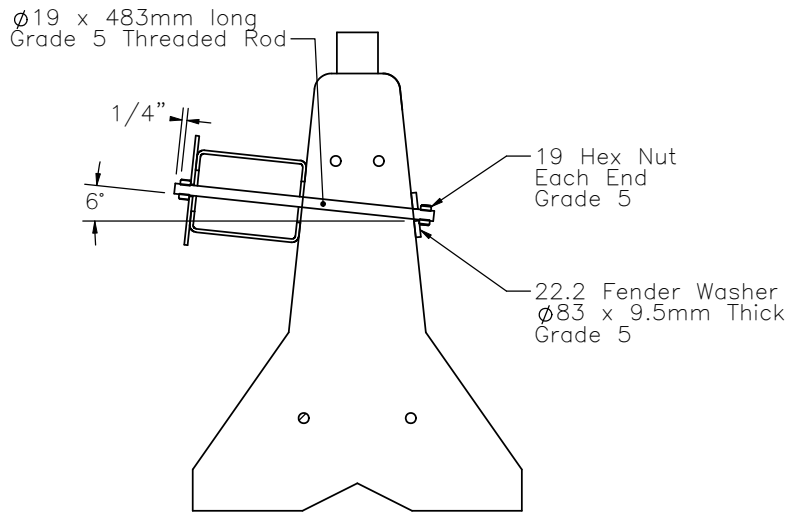
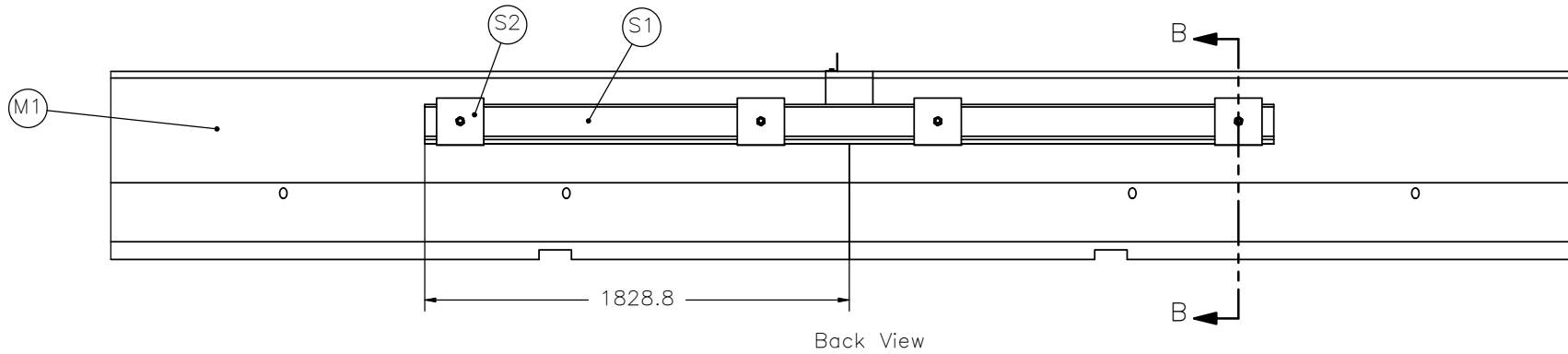
Limited Deflection Stiffened
Temporary Concrete Barrier

Bill of Bars

DWG. NAME:
NY-BB-TempBarrier_6x8_R6_metric

SCALE: None
UNITS: mm

SHEET:
8 of 11
DATE:
2/27/2008
DRAWN BY:
GRA/CSS
REV. BY:
KAP/RKF



- Notes: (1) ASTM A193 Grade B7 is acceptable as a substitute for Grade 5 threaded rod.
 (2) Shim box beam as needed with 22.2mm i.d. x 83mm o.d. x 9.5mm thick Grade 5 washer.



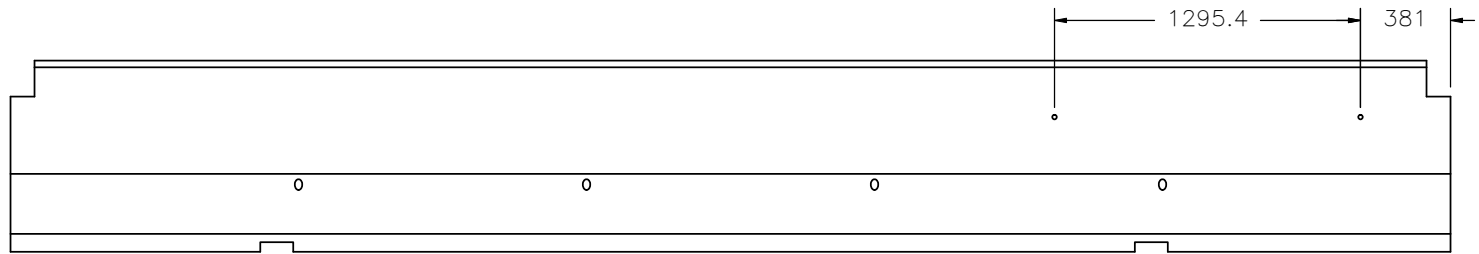
Midwest Roadside
Safety Facility

Limited Deflection Stiffened
Temporary Concrete Barrier
Stiffener

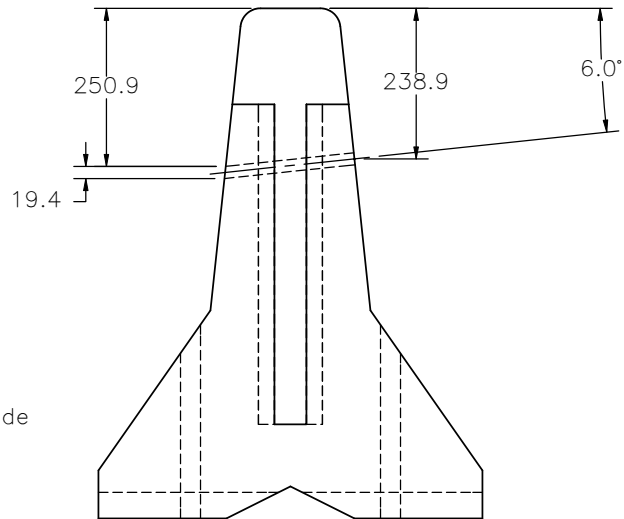
SHEET:
9 of 11
DATE:
2/27/2008
DRAWN BY:
GRA/CSS
REV. BY:
KAP/RKF

DWG. NAME:
NY-BB-TempBarrier_6x8_R6_metric

SCALE: None
UNITS: mm



Back View



Traffic Side



Midwest Roadside
Safety Facility

Limited Deflection Stiffened
Temporary Concrete Barrier
Stiffener Drilling

SHEET:
10 of 11

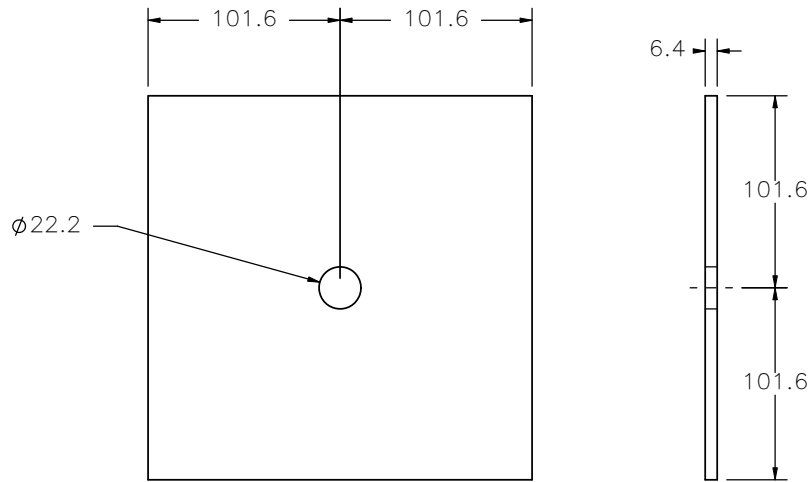
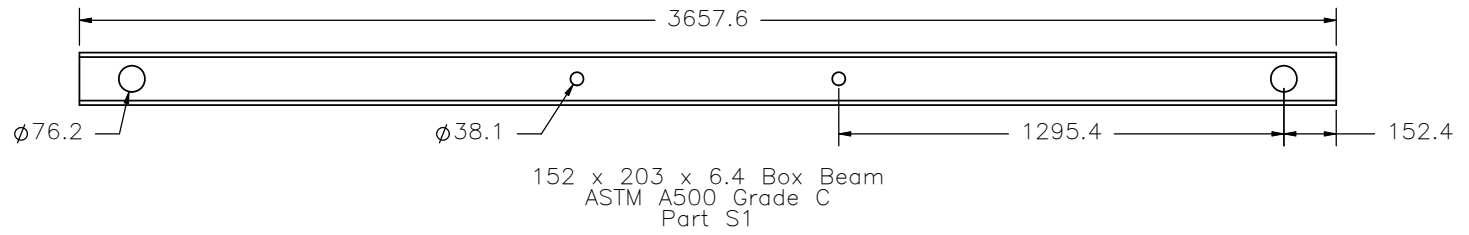
DATE:
2/27/2008

DRAWN BY:
GRA/CSS


DWG. NAME:
NY-BB-TempBarrier_6x8_R6_metric

SCALE: None
UNITS: mm

REV. BY:
KAP/RKF



203mm Square Plate
 A36
 Part S2

	Limited Deflection Stiffened Temporary Concrete Barrier		SHEET: 11 of 11
	Stiffener Components		DATE: 2/27/2008
Midwest Roadside Safety Facility	DWG. NAME: NY-BB-TempBarrier_6x8_R6_metric		DRAWN BY: GRA/CSS
	SCALE: None UNITS: mm		REV. BY: KAP/RKF