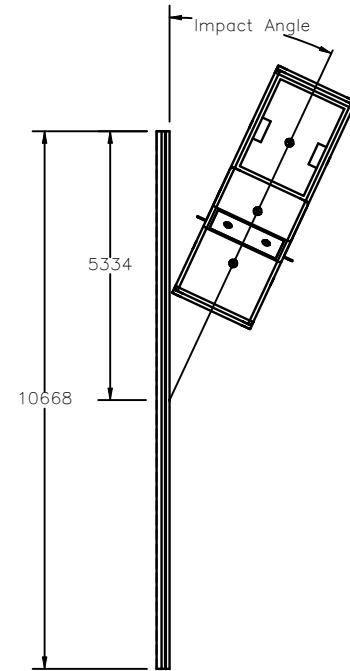




Note: Small car impact similar to pickup truck impact shown above.



Impact  $\odot$  vehicle with  $\odot$  curb.



Midwest Roadside  
Safety Facility

Curb-Vehicle Interaction  
System Layout

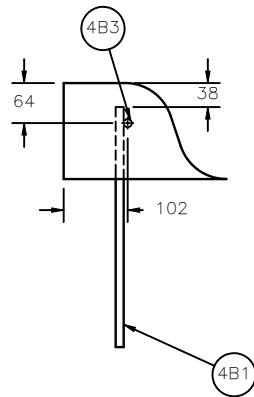
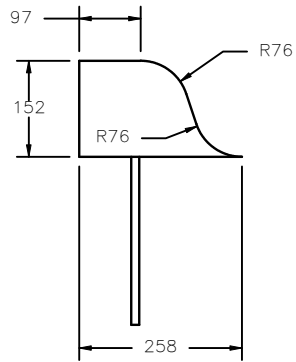
SHEET:  
1 of 5  
DATE:  
6/25/08  
DRAWN BY:  
GRA/EMA/  
RJT  
REV. BY:  
KAP/RKF

DWG. NAME:  
curb-vehicle interact-rev3\_metric

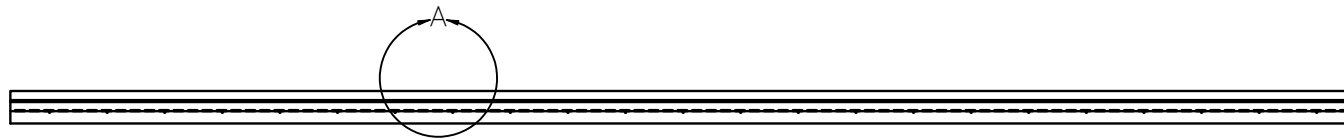
SCALE: None  
UNITS: mm

Curb-Vehicle Interact

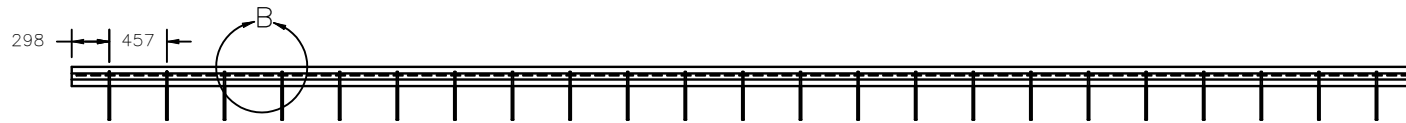
Item No.	QTY.	Description	Length	Material Spec
4B1	23	ø12.7 mm Rebar	381 mm	Gr. 60
4B3	1	ø12.7 mm Rebar	10592 mm	Gr. 60



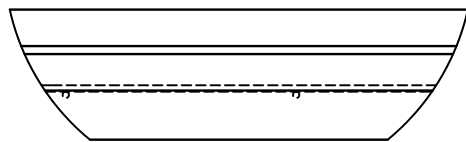
Top View



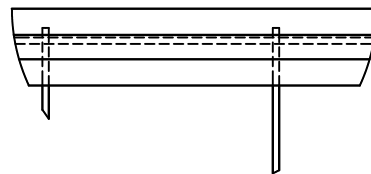
Front View



- Note: (1) AASHTO Type B Curb.  
 (2) 28-day Concrete Strength equal to 27.6 MPa or greater.  
 (3) Grade 60 Steel Reinforcement.



DETAIL A  
SCALE 1 : 15



DETAIL B  
SCALE 1 : 15



Midwest Roadside  
Safety Facility

Curb-Vehicle Interaction  
Curb Detail

SHEET:  
2 of 5

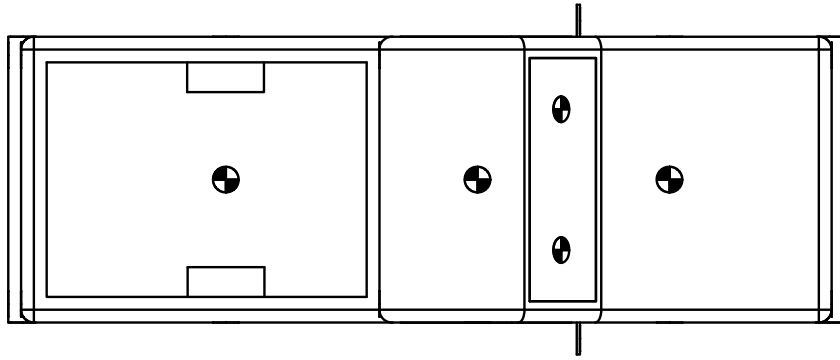
DATE:  
6/25/08

DRAWN BY:  
GRA/EMA/  
RJT

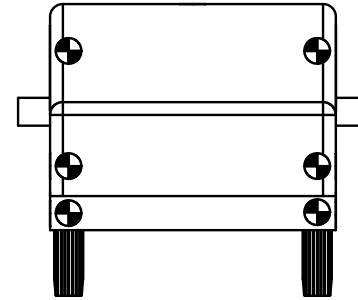
DWG. NAME:  
curb-vehicle interact-rev3\_metric

SCALE: None  
UNITS: mm

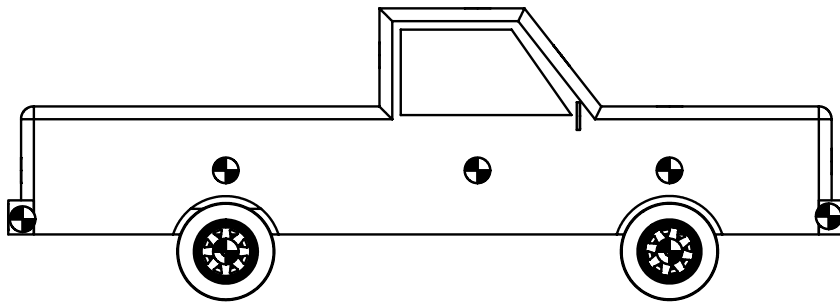
REV. BY:  
KAP/RKF



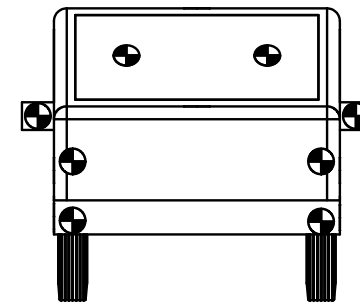
Top View



Rear View




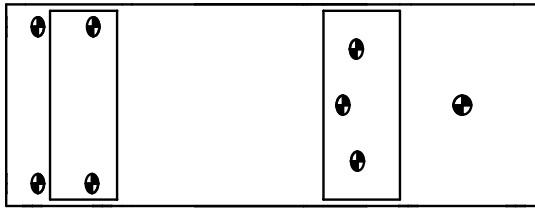
Side View



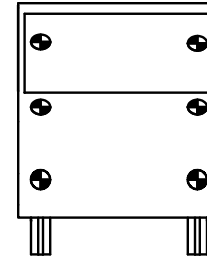
Front View

Note: (1) These are the minimum vehicle targets required.  
 (2) A stripe is painted through the centerline of each tire

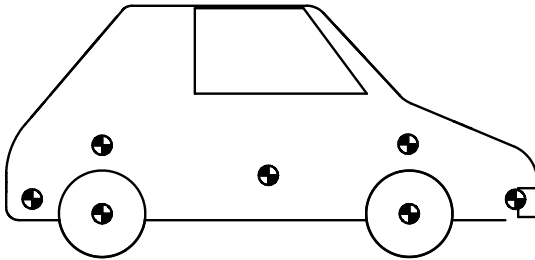
	<b>Curb-Vehicle Interaction</b>		SHEET: 3 of 5
	Vehicle Target Locations Pickup Truck		DATE: 6/25/08
Midwest Roadside Safety Facility	DWG. NAME: curb-vehicle interact-rev3_metric		DRAWN BY: GRA/EMA/ RJT
	SCALE: None UNITS: mm		REV. BY: KAP/RKF



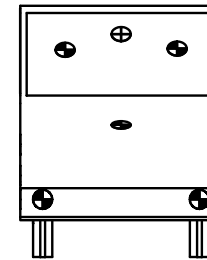
Top View



Rear View




Side View



Front View

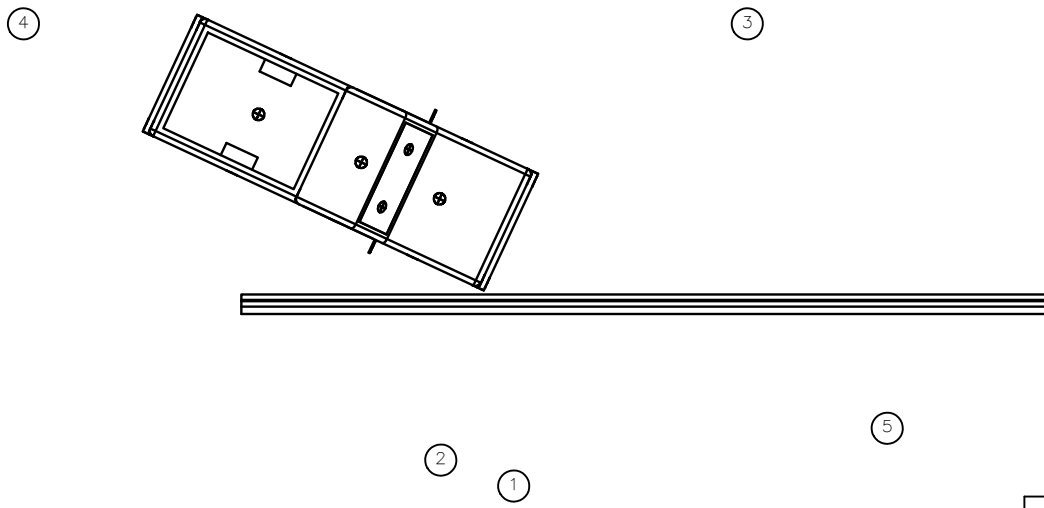
Note: (1) These are the minimum vehicle targets required.  
 (2) A stripe is painted through the centerline of each tire

	<b>Curb-Vehicle Interaction</b>		SHEET: 4 of 5
	Vehicle Target Locations Small Car		DATE: 6/25/08
Midwest Roadside Safety Facility	DWG. NAME: curb-vehicle interact-rev3_metric		DRAWN BY: GRA/EMA/ RJT
	SCALE: None UNITS: mm		REV. BY: KAP/RKF

Test Matrix				
Number of Tests	Vehicle Type	Impact Speed	Impact Angle	Towed/Driver
2	2000P	100 kph	25 degrees	Towed
2	2270P	100 kph	25 degrees	Towed
2	1100C	100 kph	25 degrees	Towed

Approximate Camera Locations and View:

- 1) Wide overall vehicle behavior capturing approximately four vehicle body lengths
- 2) Focus on curb impact
- 3) Focus on curb impact
- 4) Rear view
- 5) Front view



Midwest Roadside  
Safety Facility

Curb-Vehicle Interaction

Camera Locations and  
Test Matrix

SHEET:  
5 of 5

DATE:  
6/25/08

DRAWN BY:  
GRA/EMA/  
RJT

DWG. NAME:  
curb-vehicle interact-rev3\_metric

SCALE: None  
UNITS: mm

REV. BY:  
KAP/RKF