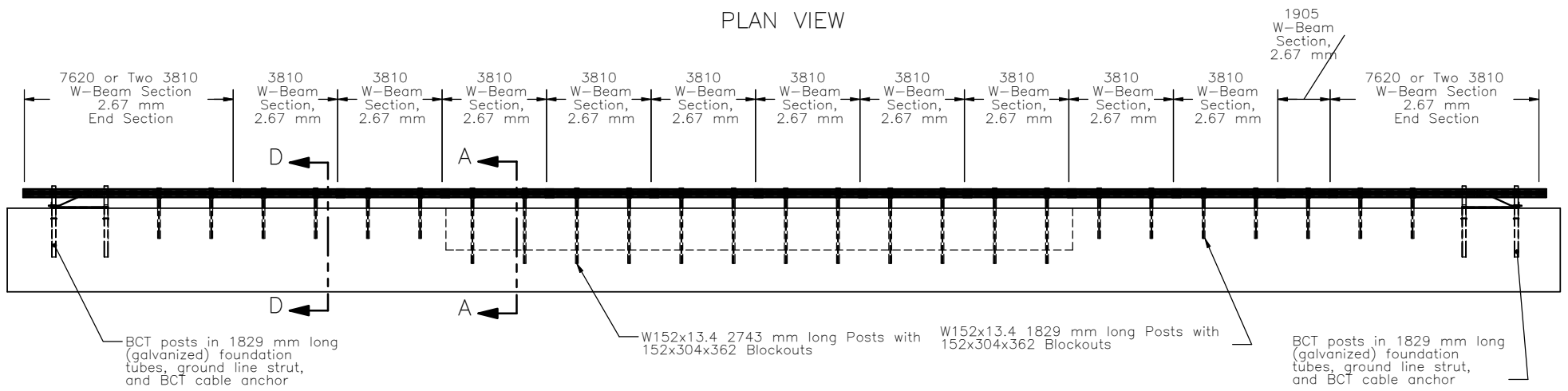
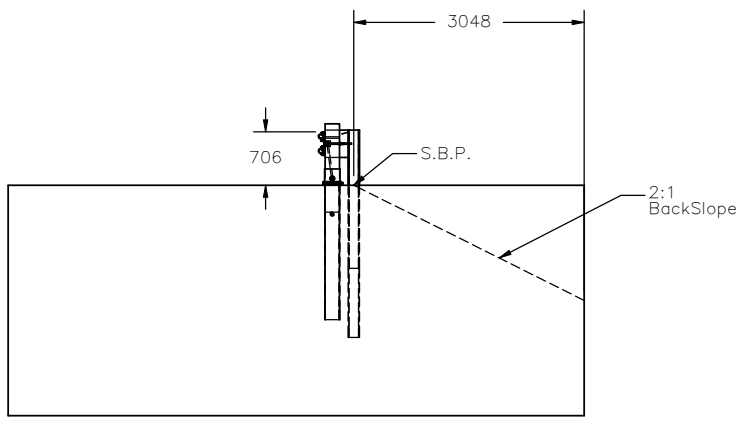


PLAN VIEW



FRONT VIEW



END VIEW

- Notes: (1) The MGS is designed for installation with a top rail height ranging between 706 to 813 mm and a nominal 787 mm top mounting height.
 (2) 2270P vehicle test with TL-3 impact conditions of the Update to NCHRP 350.



Midwest Roadside Safety Facility

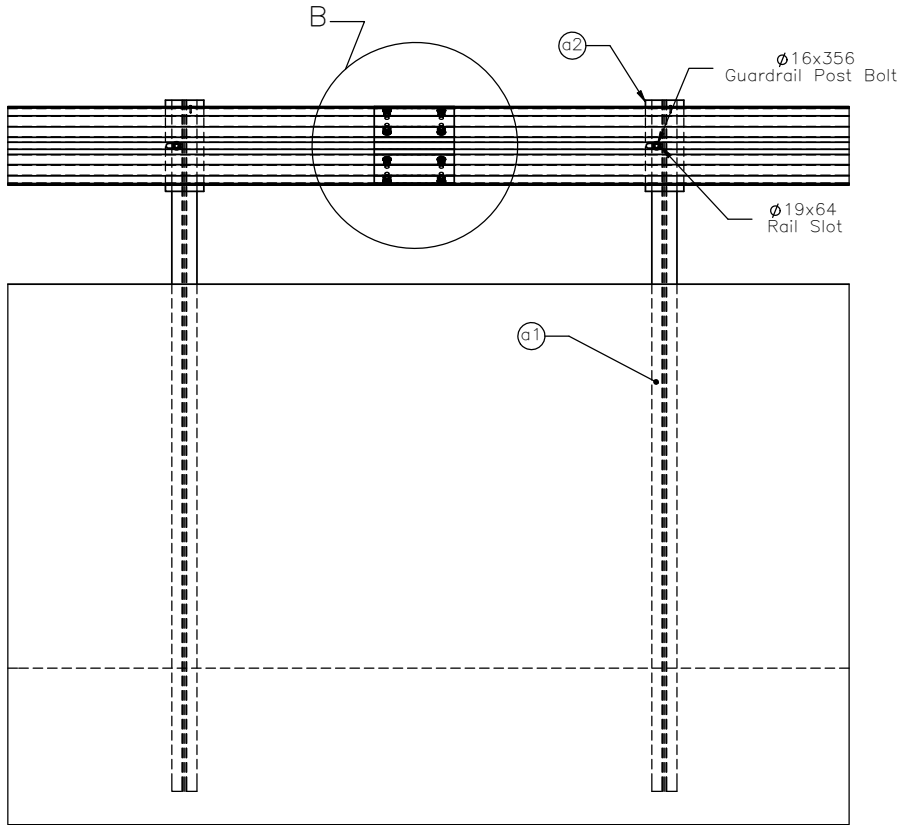
MGS on a 2:1 Fill Slope
System Layout

DWG. NAME: MGS_at_slope_metric	SCALE: None UNITS: mm	REV. BY: EMA
-----------------------------------	--------------------------	-----------------

SHEET:
1 of 8

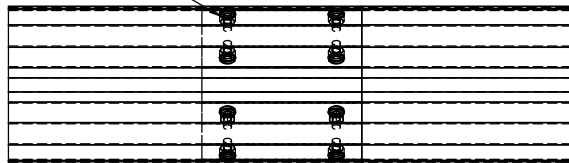
DATE:
5/5/2008

DRAWN BY:
CSS

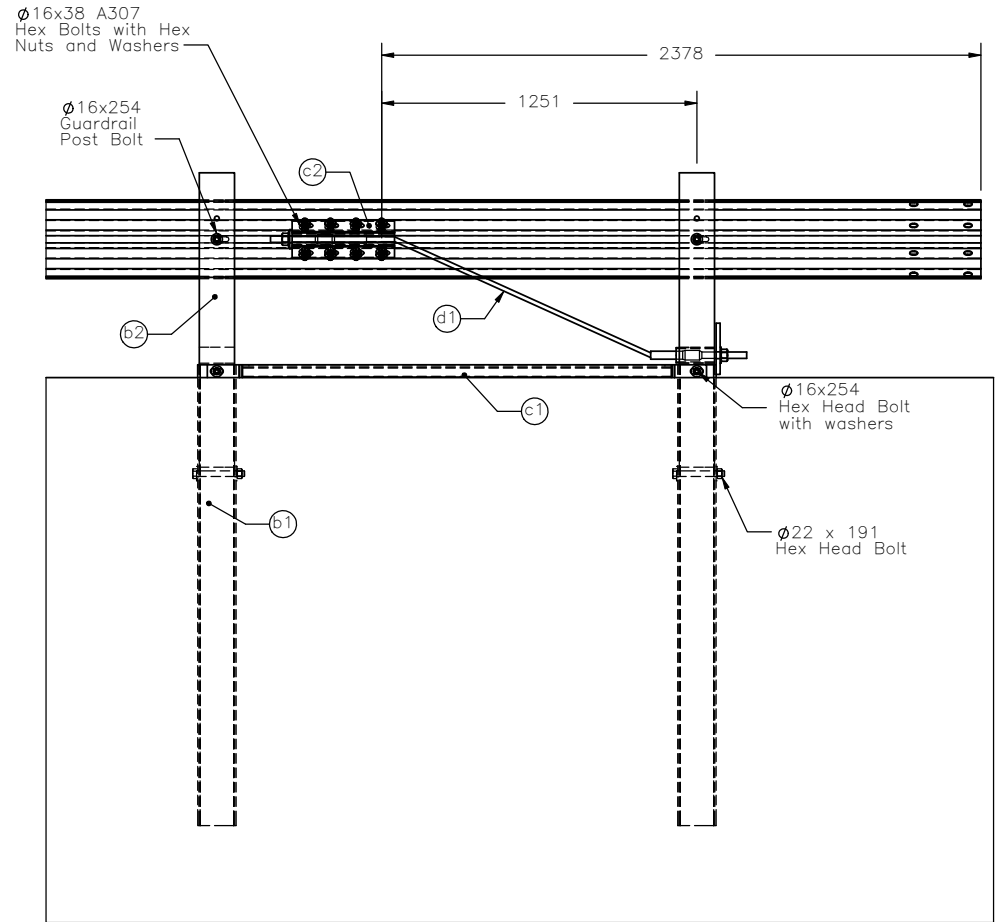


SPLICE DETAIL

Ø16 Std. Guardrail Splice Bolts



DETAIL B
SCALE 1 : 15



END RAIL DETAIL



Midwest Roadside Safety Facility

MGS on a 2:1 Fill Slope

End Rail Detail
Splice Detail

SHEET:
2 of 8

DATE:
5/5/2008

DRAWN BY:
CSS

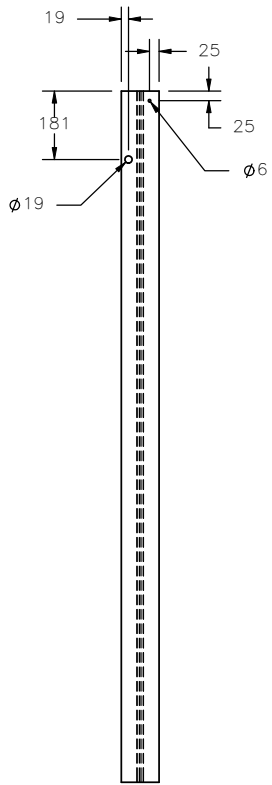
DWG. NAME:
MGS_at_slope_metric

SCALE: None
UNITS: mm

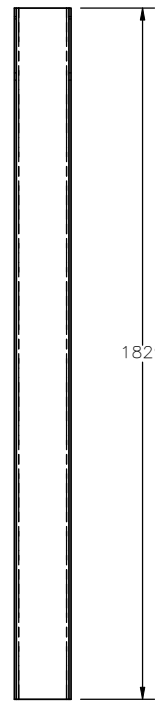
REV. BY:
EMA



PLAN VIEW

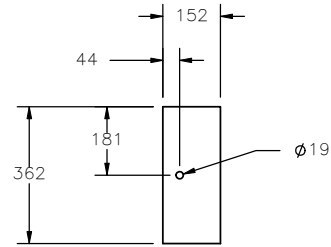
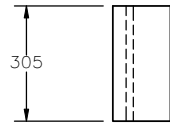


FRONT VIEW

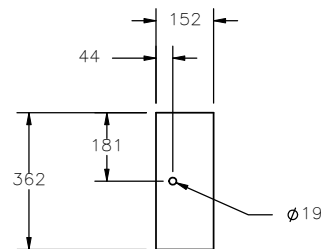
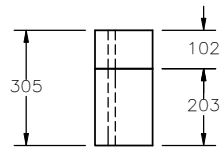


SIDE VIEW

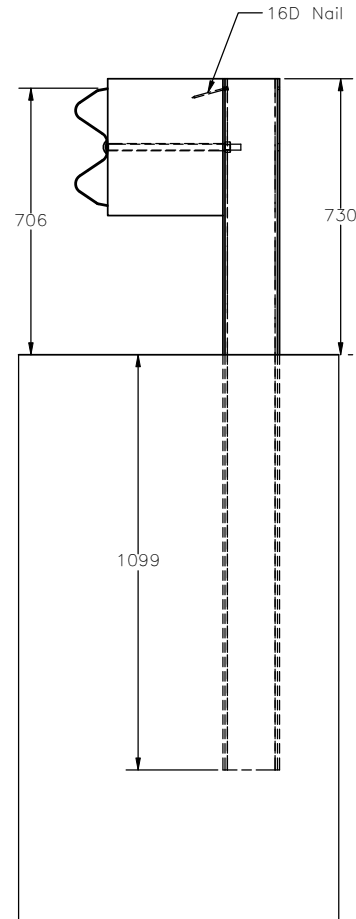
W152x13.4 Post
Part a3



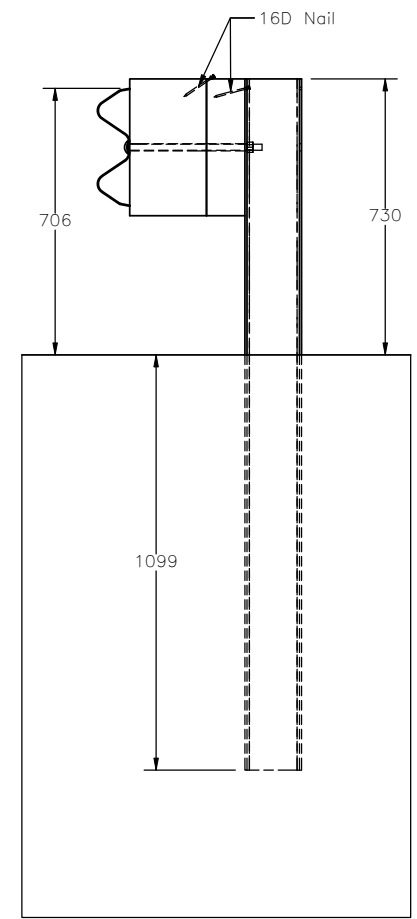
W-Beam Blockout
Part a2



Optional Split
W-Beam Blockout
Part a2



SECTION D-D
SCALE 1:20



SECTION D-D
Split Blockout Option



Midwest Roadside
Safety Facility

MGS on a 2:1 Fill Slope
Post 3-8, 21-27 Detail

DWG. NAME.
MGS_at_slope_metric

SCALE: 1:20
UNITS: mm

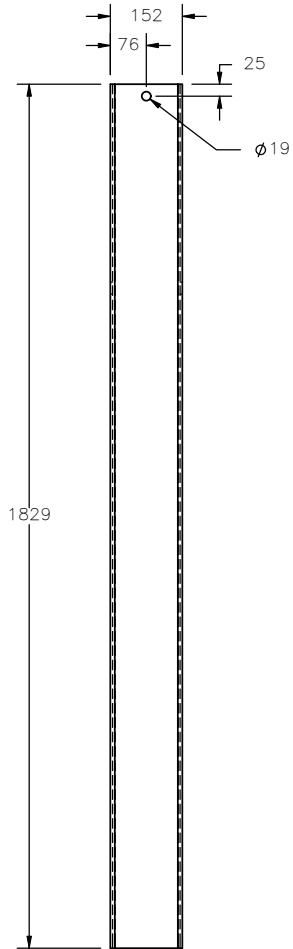
SHEET:
4 of 8
DATE:
5/5/2008
DRAWN BY:
CSS
REV. BY:
EMA



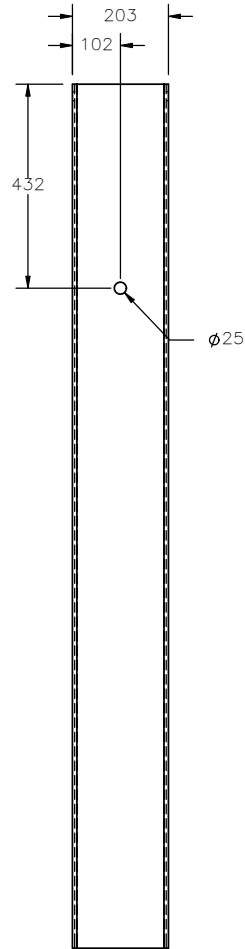
PLAN VIEW



PLAN VIEW

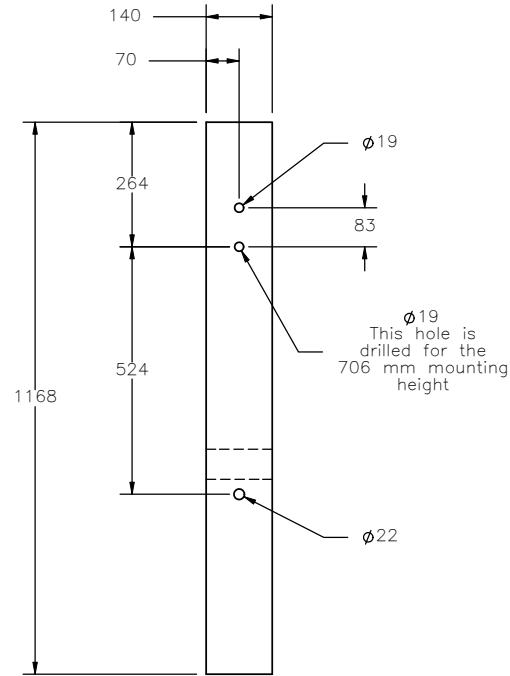


FRONT VIEW

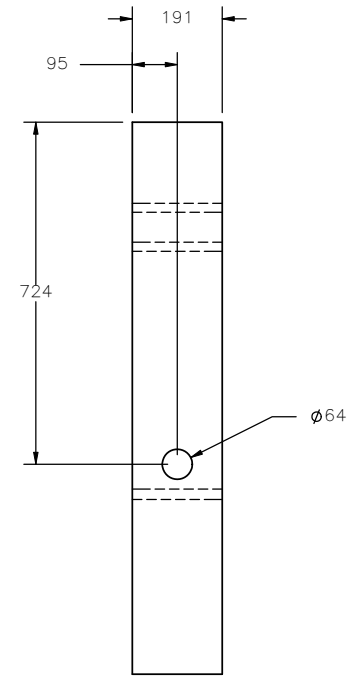


SIDE VIEW

Foundation Tube
Part b1



FRONT VIEW



SIDE VIEW



Midwest Roadside
Safety Facility

MGS on a 2:1 Fill Slope

BCT Post and
Foundation Tube Detail

SHEET:
5 of 8

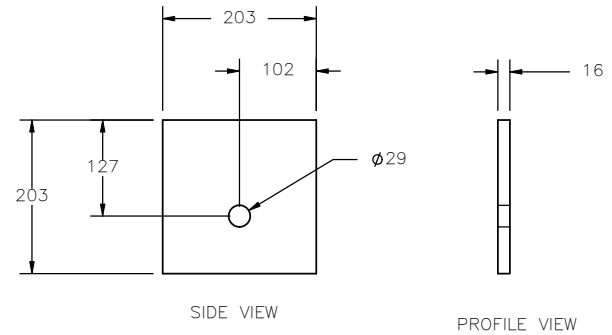
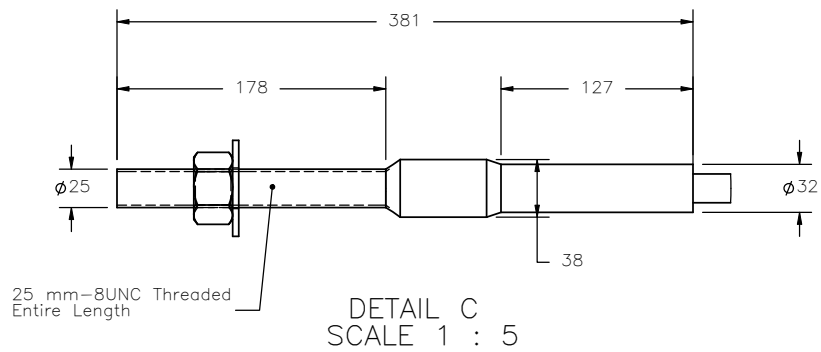
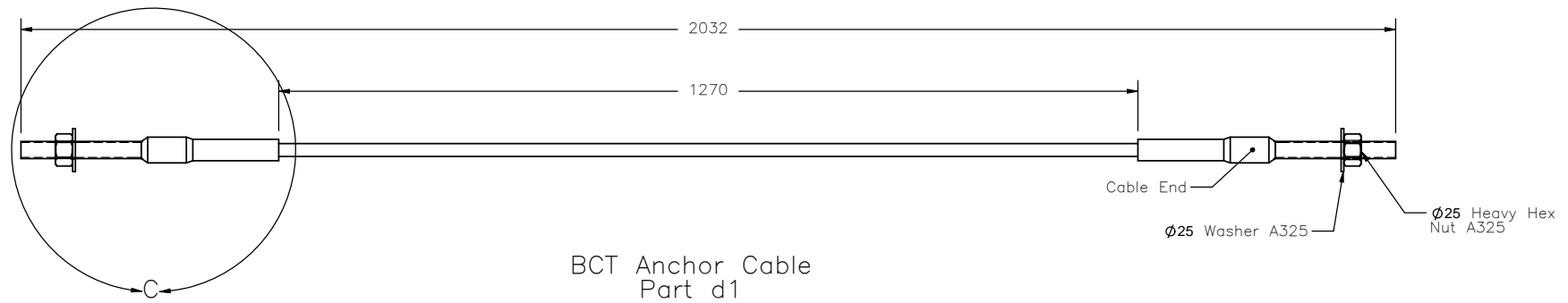
DATE:
5/5/2008

DRAWN BY:
CSS

DWG. NAME:
MGS_at_slope_metric

SCALE: 1:16
UNITS: mm

REV. BY:
EMA



Anchor Cable
Bearing Plate
Part d2



Midwest Roadside
Safety Facility

MGS on a 2:1 Fill Slope

BCT Cable Anchor
Detail

SHEET:
6 of 8

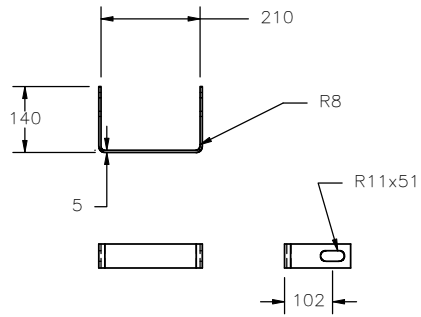
DATE:
5/5/2008

DRAWN BY:
CSS

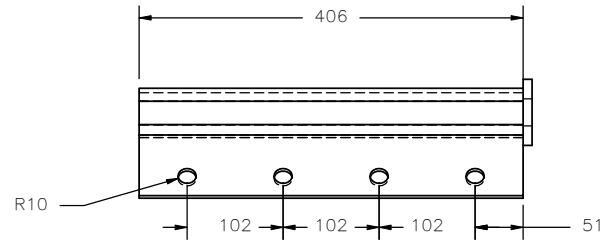
DWG. NAME:
MGS_at_slope_metric

SCALE: None
UNITS: mm

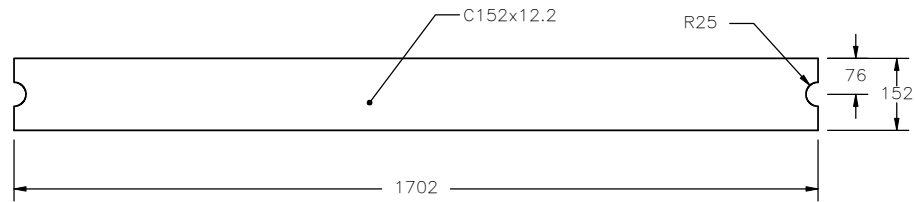
REV. BY:
EMA



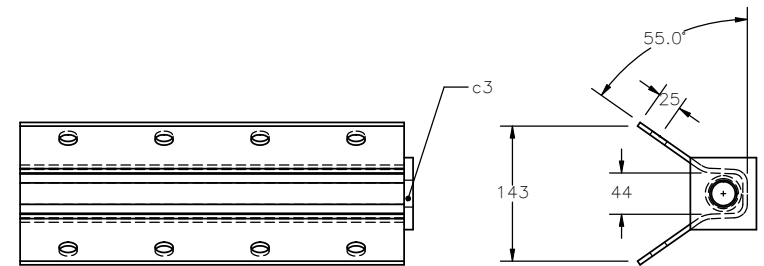
Yoke Detail



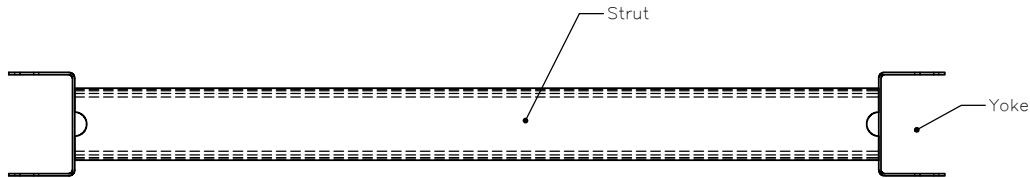
Anchor Bracket
Part c2



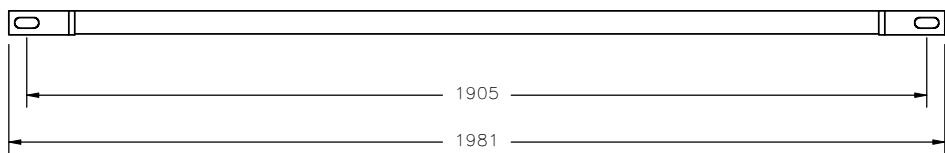
Strut Detail



Anchor Bracket
Bearing Plate
Part c3

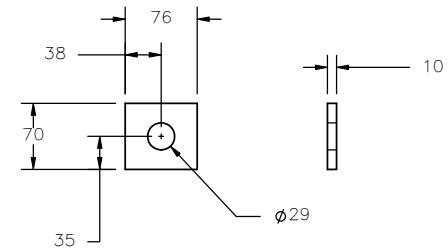


PLAN VIEW



FRONT VIEW

Ground Strut
Part c1



Midwest Roadside
Safety Facility

MGS on a 2:1 Fill Slope

Ground Strut &
Anchor Bracket Details

SHEET:
7 of 8

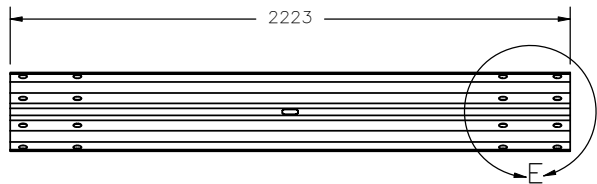
DATE:
5/5/2008

DRAWN BY:
CSS

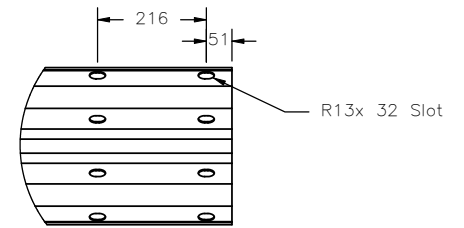
DWG. NAME:
MGS_at_slope_metric

SCALE: 1:16
UNITS: mm

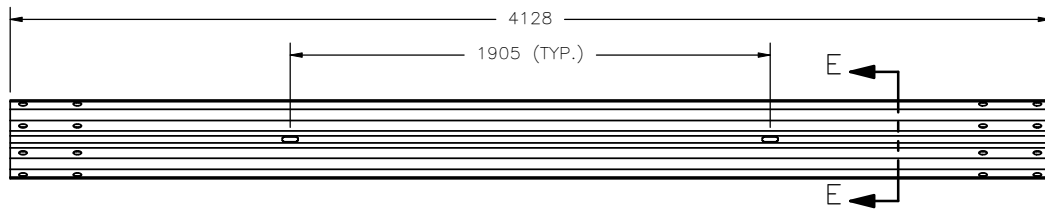
REV. BY:
EMA



1905 mm W-Beam Section, 2.67 mm

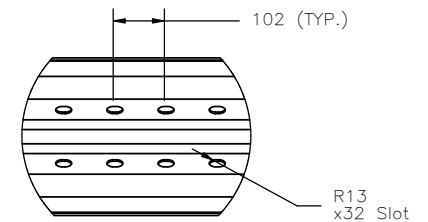


DETAIL E
SCALE 1 : 15

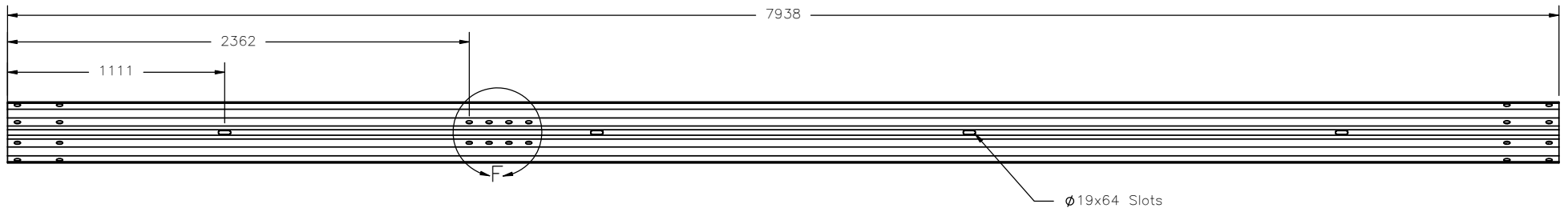


3810 mm W-Beam Section, 2.67 mm

SECTION E-E



DETAIL F
SCALE 1 : 15



7620 mm W-Beam Section, 2.67 mm, End Section



Midwest Roadside
Safety Facility

MGS on a 2:1 Fill Slope
Rail Section Details

SHEET:
8 of 8

DATE:
5/5/2008

DRAWN BY:
CSS

DWG. NAME:
MGS_at_slope_metric

SCALE: None
UNITS: mm

REV. BY:
EMA