
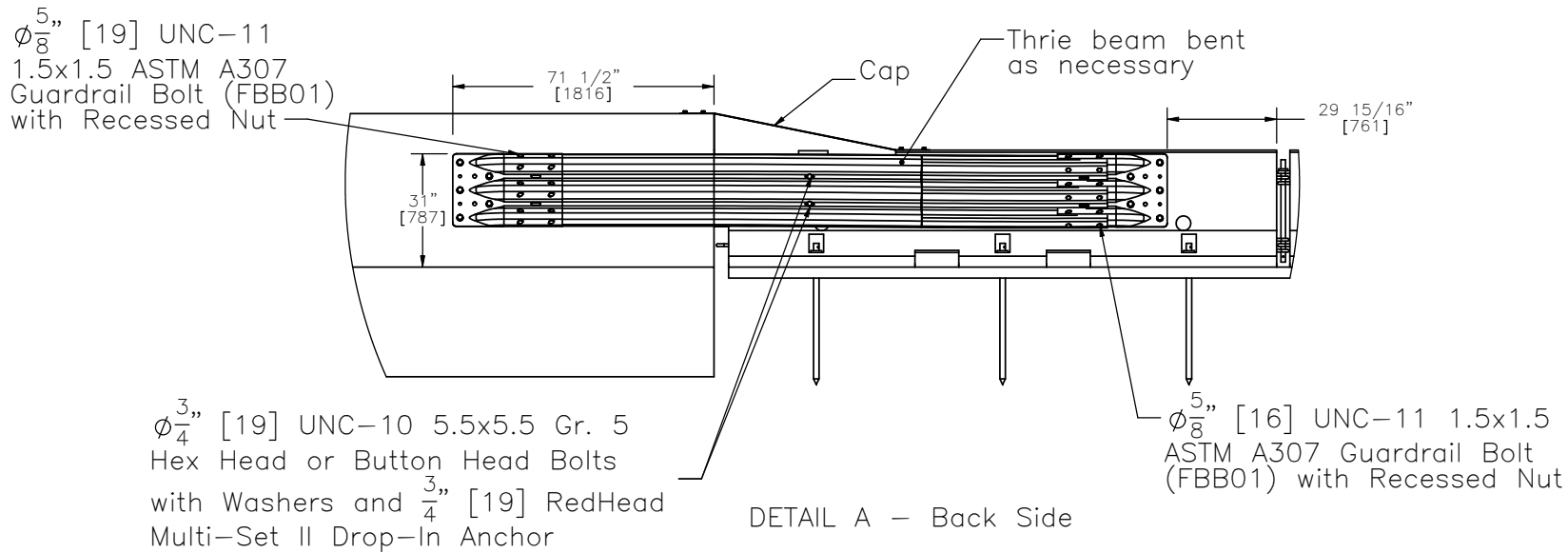
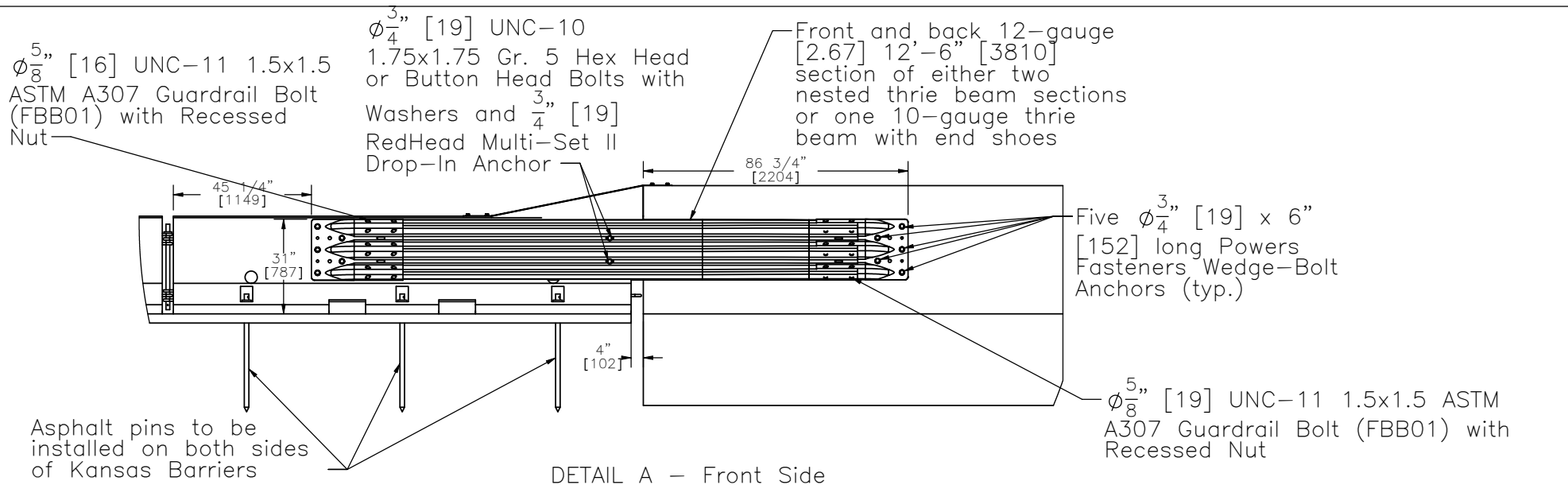


- Note:
- (1) Use minimum 28-day concrete compressive strength of 5,000 psi [34.5 MPa] for single slope barrier.
 - (2) Use native fill soil under asphalt.
 - (3) Maximize barrier spacing by pulling the joints apart with the drop-pins inserted through the loops.

 Midwest Roadside Safety Facility	Temporary Barrier Transition Layout	SHEET: 1 of 17
		DATE: 3-30-08
		DRAWN BY: RJT
	DWG. NAME: TempBarrTransition_R6_TCBT-1	SCALE: 1:225 UNITS: In.[mm]
		REV. BY: KAP/BWB



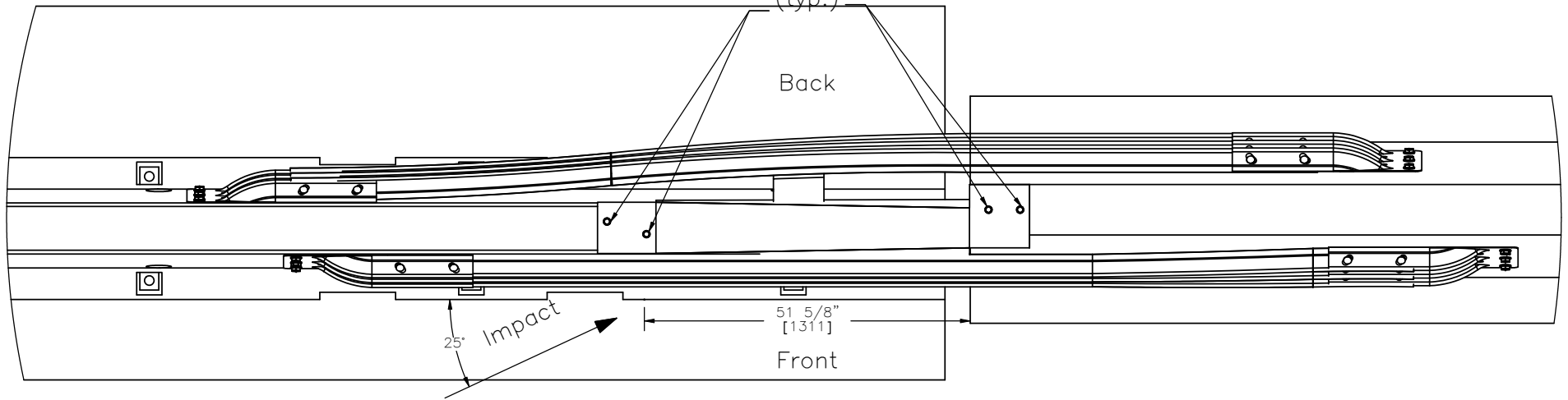
- Notes: (1) Steel reinforcement not shown.
 (2) Thrie beam piece on non-impact side is offset $15 \frac{1}{4}$ " [387] upstream to prevent interference from the anchors on opposing sides.



Midwest Roadside Safety Facility

Temporary Barrier Transition		SHEET: 2 of 17
Thrie Beam Details		DATE: 3-30-08
		DRAWN BY: RJT
DWG. NAME: TempBarrTransition_R6_TCBT-1	SCALE: 1:50 UNITS: In./mm	REV. BY: KAP/BWB

Four $\phi \frac{5}{8}$ [16] x
 4" [102] long
 Powers Fasteners
 Wedge-Bolt
 Anchors
 (typ.)



DETAIL B

Note: (1) Cap end plate placed flush with upstream end of single slope barrier.



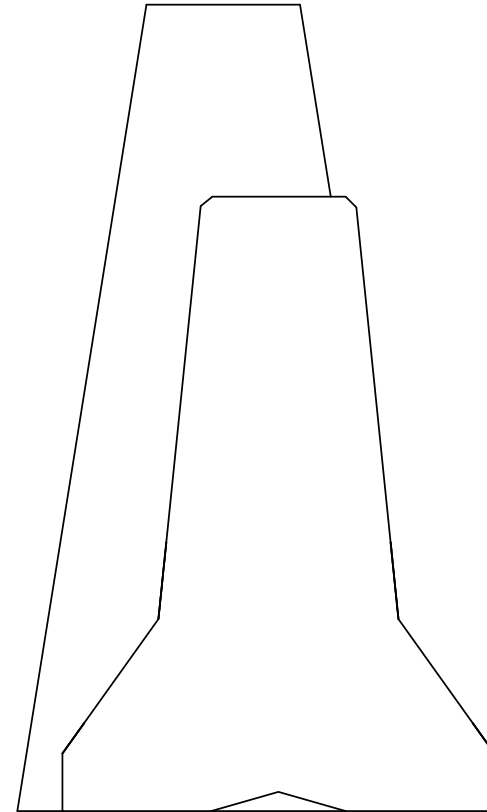
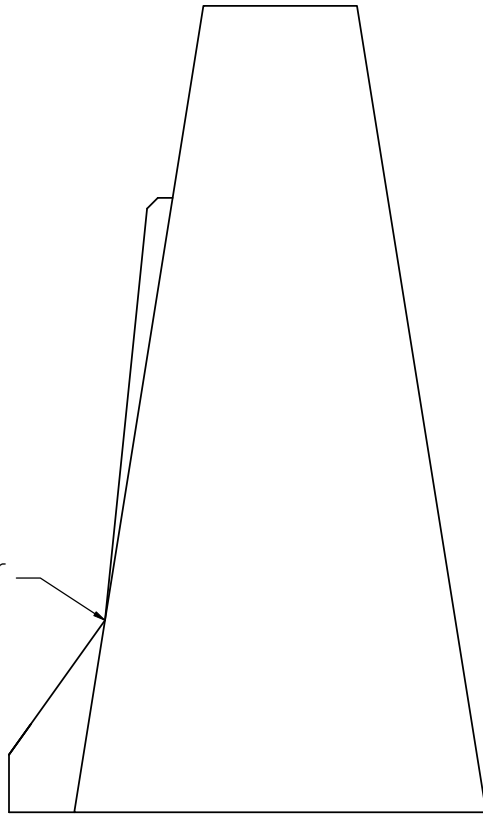
Midwest Roadside
 Safety Facility

Temporary Barrier Transition
 Cap Anchoring Detail

SHEET:
 3 of 17
 DATE:
 3-30-08
 DRAWN BY:
 RJT

DWG. NAME: TempBarrTransition_R6_TCBT-1
 SCALE: 1:25
 UNITS: In.[mm]
 REV. BY: KAP/BWB

Traffic Side Face
of Permanant
Barrier Lined Up
with the Slope
Break Point of
Temporary Barrier



Midwest Roadside
Safety Facility

Temporary Barrier Transition

Permanant to Temporary
End View

SHEET:
4 of 17

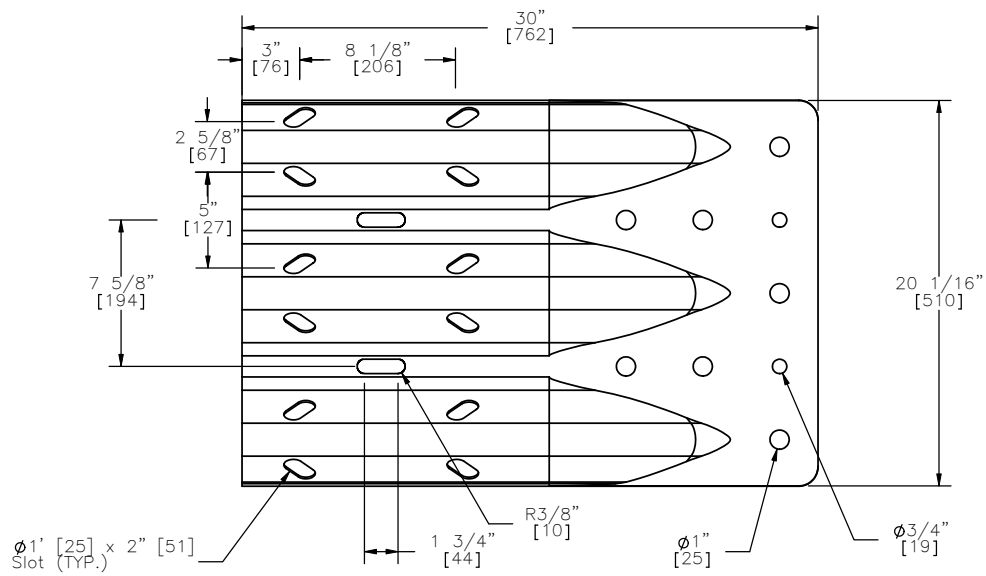
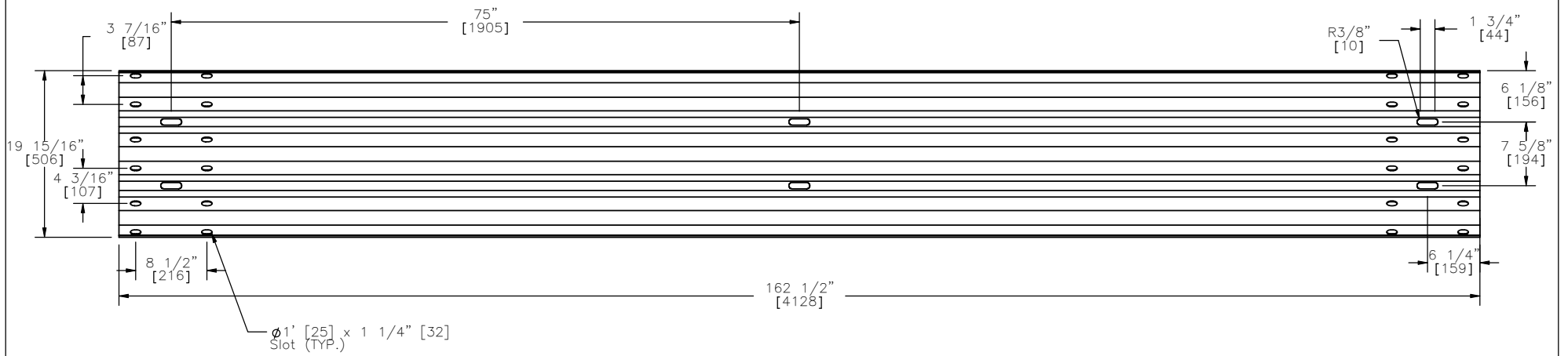
DATE:
3-30-08

DRAWN BY:
RJT

DWG. NAME:
TempBarrTransition_R6_TCBT-1

SCALE: 1:10
UNITS: In.[mm]

REV. BY:
KAP/BWB



Midwest Roadside Safety Facility

Temporary Barrier Transition

Thrie-Beam and End Shoe

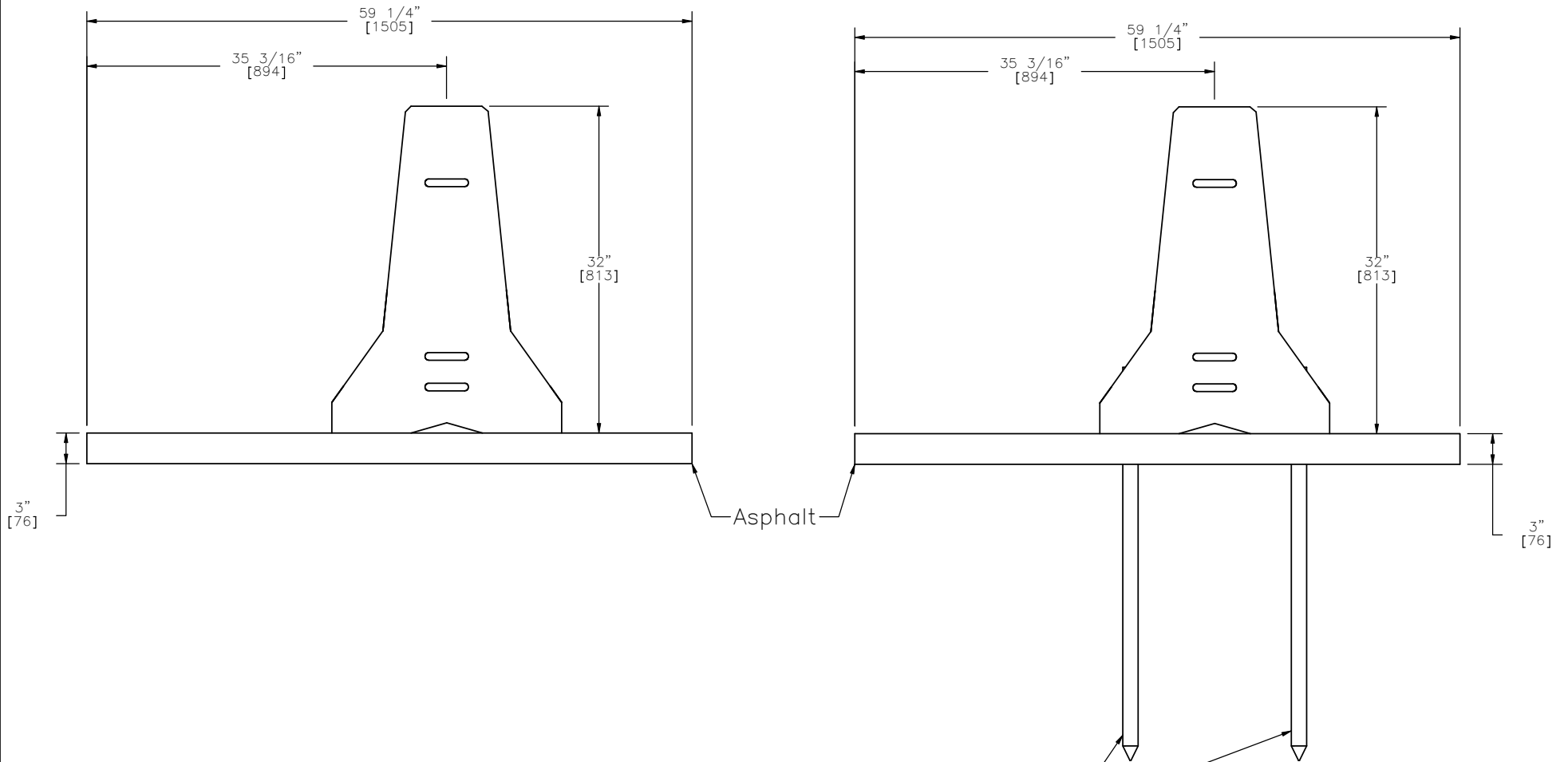
DWG. NAME:
TempBarrTransition_R6_TCBT-1

SCALE: 1:18
UNITS: In.[mm]

SHEET:
5 of 17
DATE:
3-30-08
DRAWN BY:
RJT
REV. BY:
KAP/BWB

Kansas Barrier End View
Without Asphalt Pins

Kansas Barrier End View
With Asphalt Pins



Asphalt Barrier Pin Assembly



Midwest Roadside
Safety Facility

Temporary Barrier Transition

Kansas Barrier With
Asphalt Shown

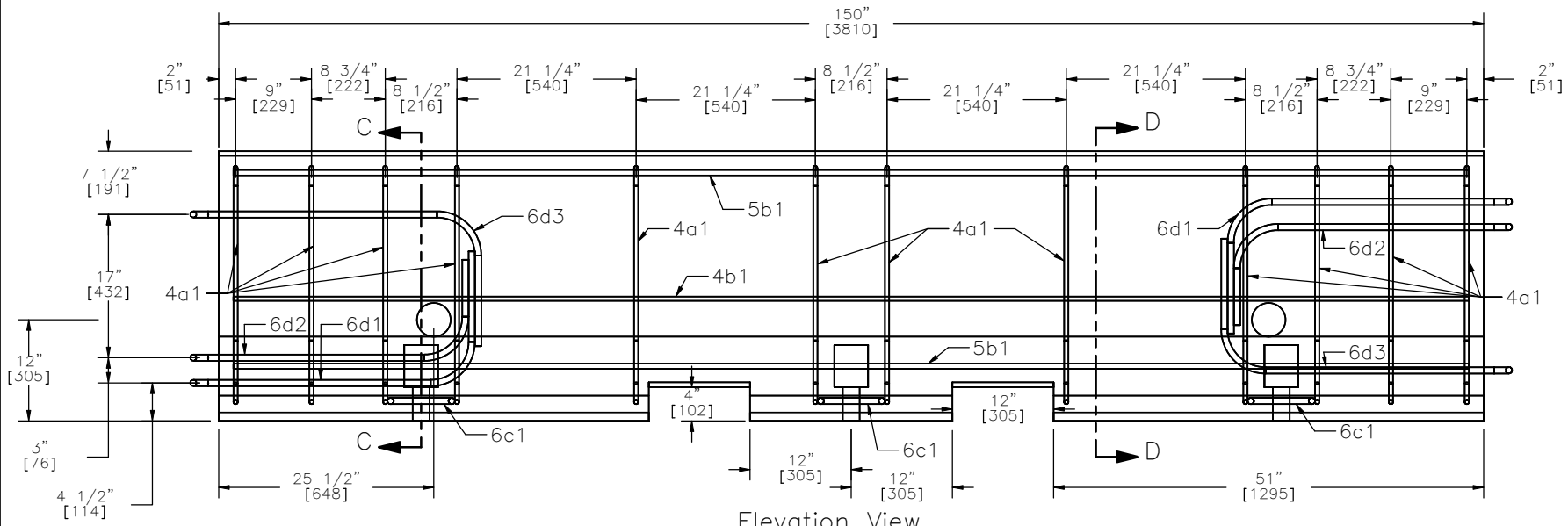
SHEET:
6 of 17

DATE:
3-30-08

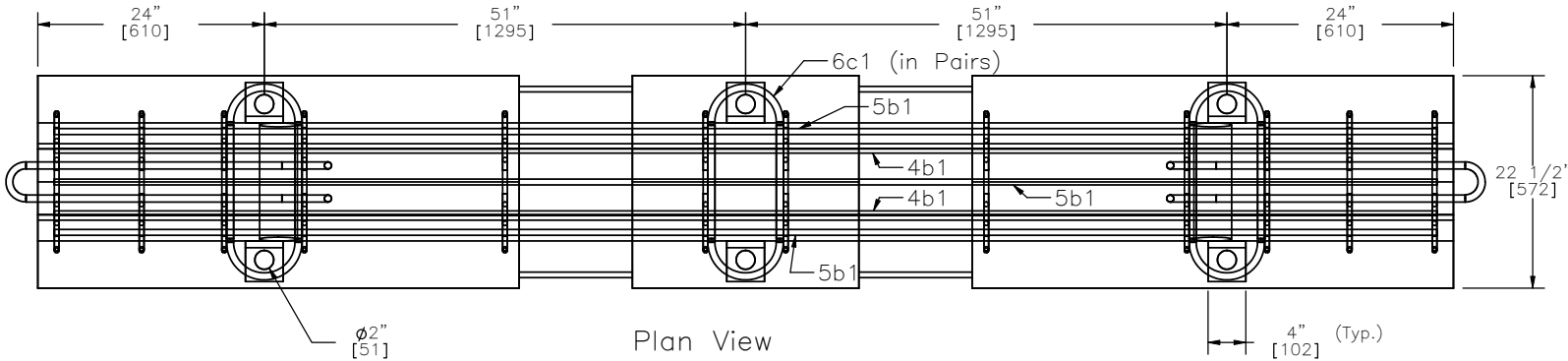
DRAWN BY:
RJT

DWG. NAME:
TempBarrTransition_R6_TCBT-1

SCALE: 1:15
UNITS: In.[mm] REV. BY:
KAP/BWB



Elevation View



Plan View



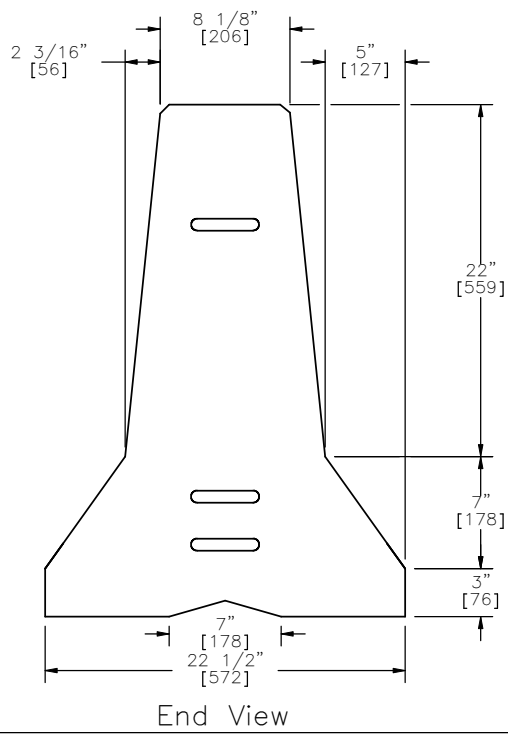
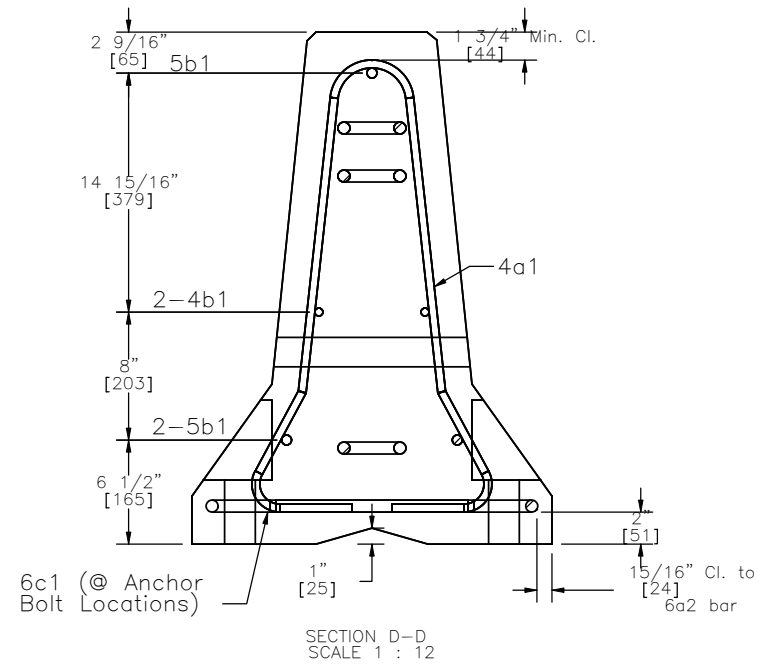
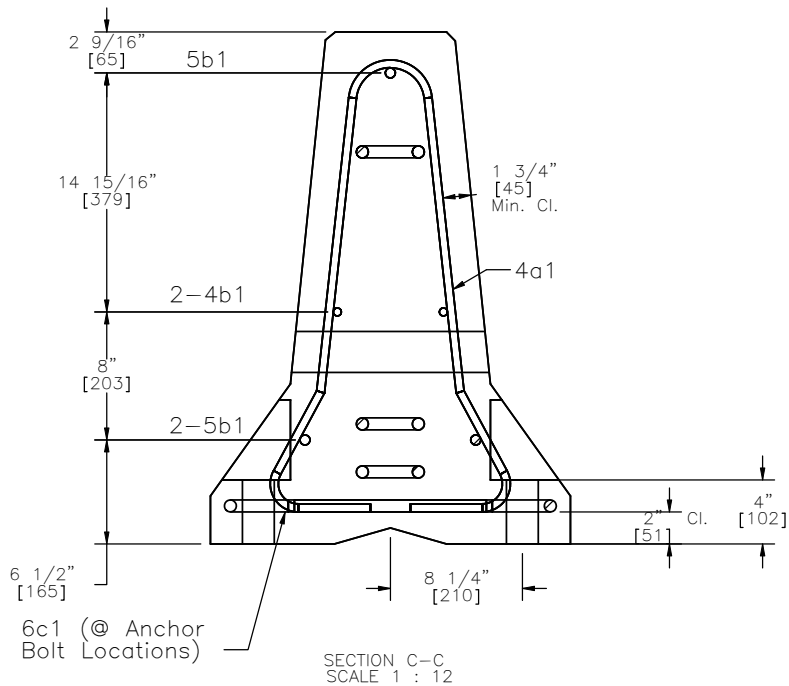
Midwest Roadside
Safety Facility


Temporary Barrier Transition
Temporary Barrier

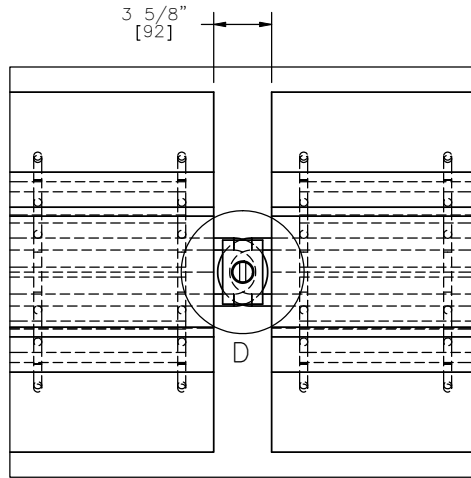
DWG. NAME:
TempBarrTransition_R6_TCBT-1

SCALE: 1:20
UNITS: In.,[mm]

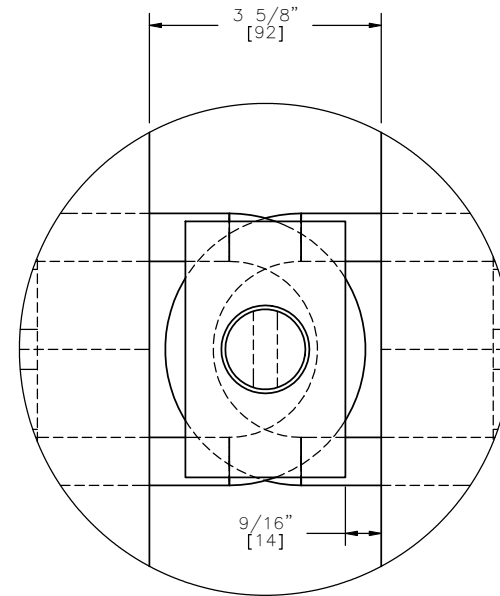
SHEET:
7 of 17
DATE:
3-30-08
DRAWN BY:
RJT
REV. BY:
KAP/BWB



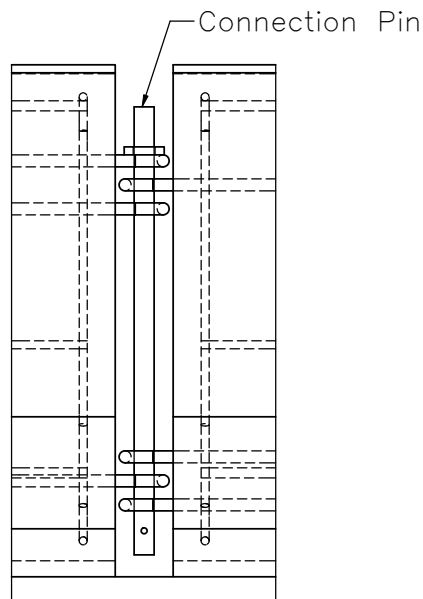
 Midwest Roadside Safety Facility	Temporary Barrier Transition Temporary Barrier Profile Details		SHEET: 8 of 17
	DWG. NAME: TempBarrTransition_R6_TCBT-1		DATE: 3-30-08
		SCALE: 1:12 UNITS: In.,[mm]	DRAWN BY: RJT
		REV. BY: KAP/BWB	



Barrier Connection Detail



DETAIL D
SCALE 1 : 3



Midwest Roadside
Safety Facility

Temporary Barrier Transition
Barrier Connection
Details

DWG. NAME:
TempBarrTransition_R6_TCBT-1

SCALE: 1:12
UNITS: In.[mm]

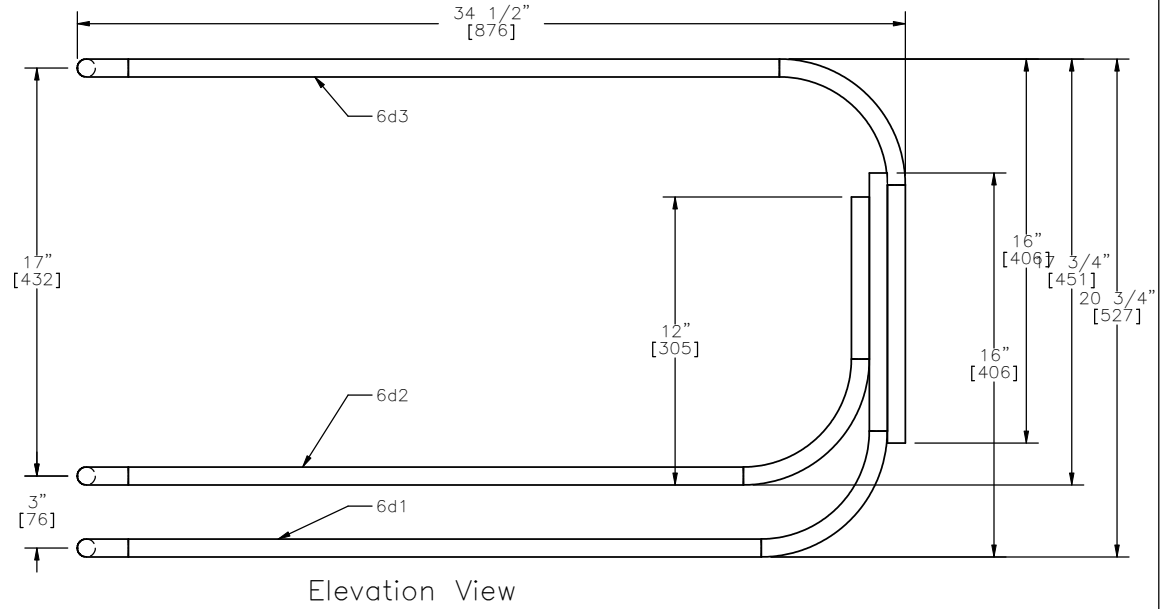
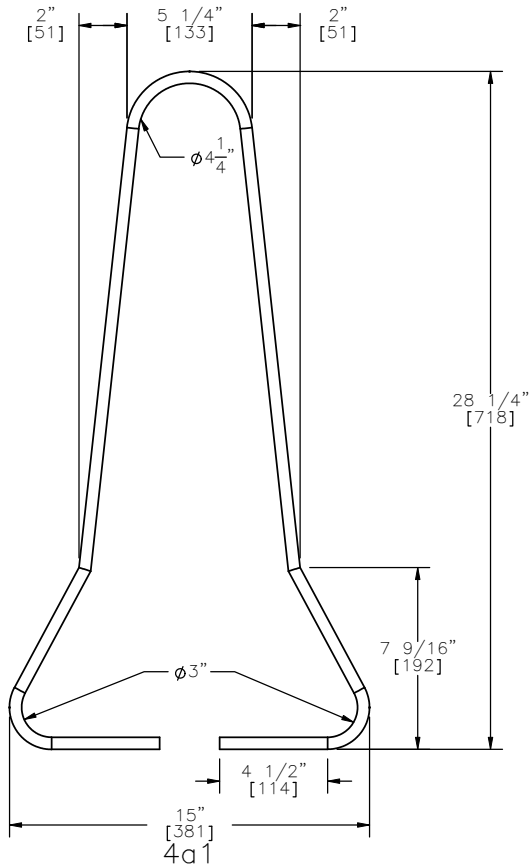
SHEET:
9 of 17

DATE:
3-30-08

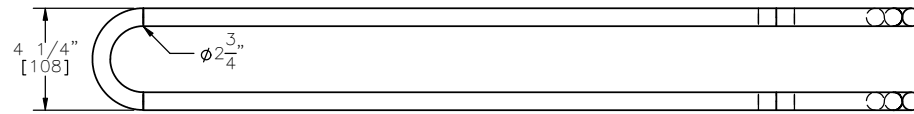
DRAWN BY:
RJT

REV. BY:
KAP/BWB

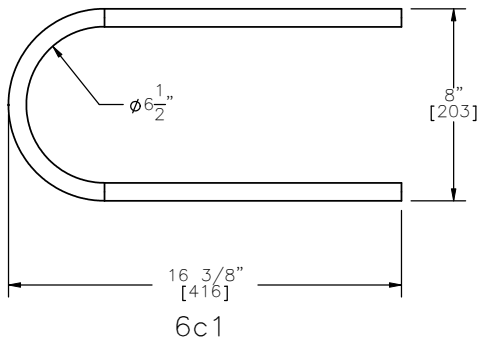
Loop Bar Assembly



Elevation View



Plan View



Bill Of Bars

Mark	Bar No.	Quantity	Length	Material	Pin Dia.
4a1	4	12	6'-0"	A615 Gr. 60	.5"
6c1	6	6	2'-11"	A615 Gr. 60	.75"
5b1	5	3	12'-2"	A615 Gr. 60	.625"
4b1	4	2	12'-2"	A615 Gr. 60	.5"
6d1	6	2	8'-5"	A706 Gr. 60	.75"
6d2	6	2	7'-7"	A706 Gr. 60	.75"
6d3	6	2	8'-6"	A706 Gr. 60	.75"



Midwest Roadside Safety Facility

Temporary Barrier Transition

Bill of Bars—
Temporary Barriers

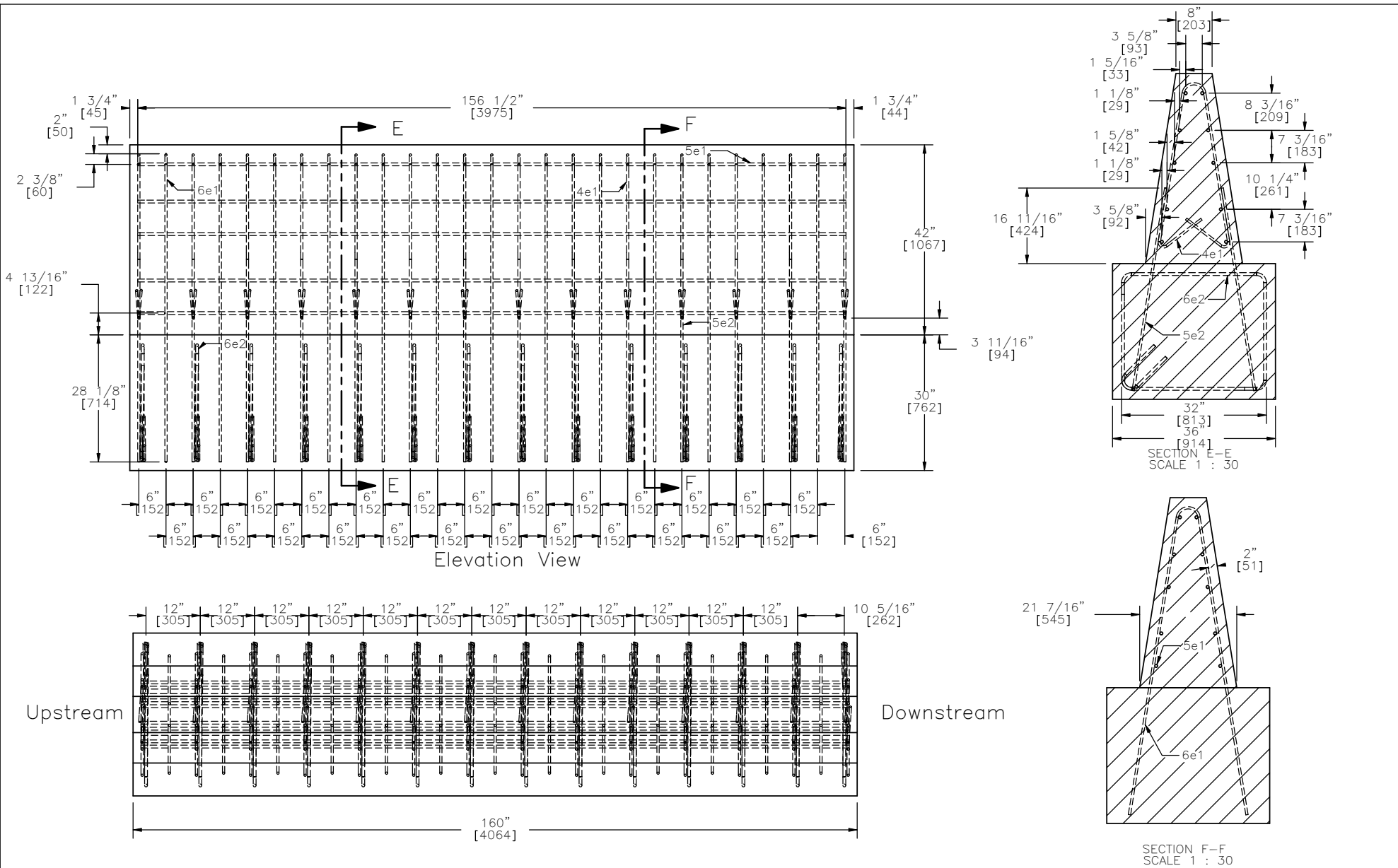
SHEET:
10 of 17

DATE:
3-30-08

DRAWN BY:
RJT

DWG. NAME:
TempBarrTransition_R6_TCBT-1

SCALE: 1:8
UNITS: In.[mm]
REV. BY:
KAP/BWB

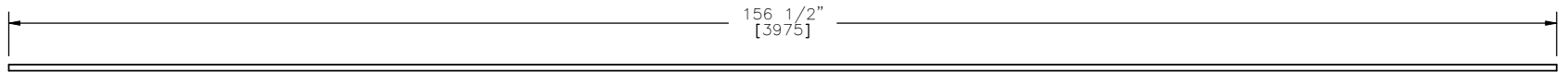


Note: (1) All rebar positioned with minimum 2" of clear cover.

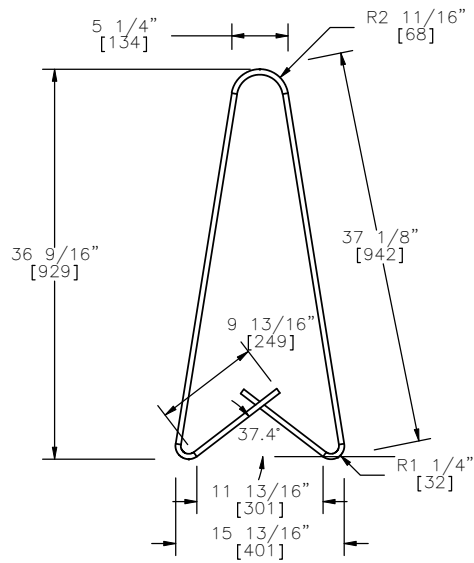


Midwest Roadside Safety Facility

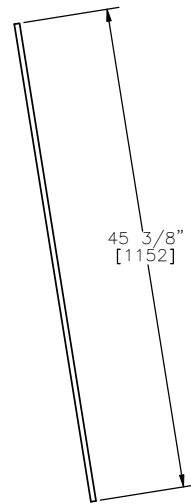
Temporary Barrier Transition		SHEET: 11 of 17
California Permanent Barrier		DATE: 3-30-08
		DRAWN BY: RJT
DWG. NAME: TempBarrTransition_R6_TCBT-1	SCALE: 1:30 UNITS: In.,[mm]	REV. BY: KAP/BWB



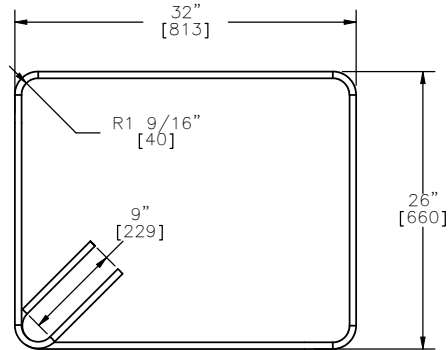
5e1



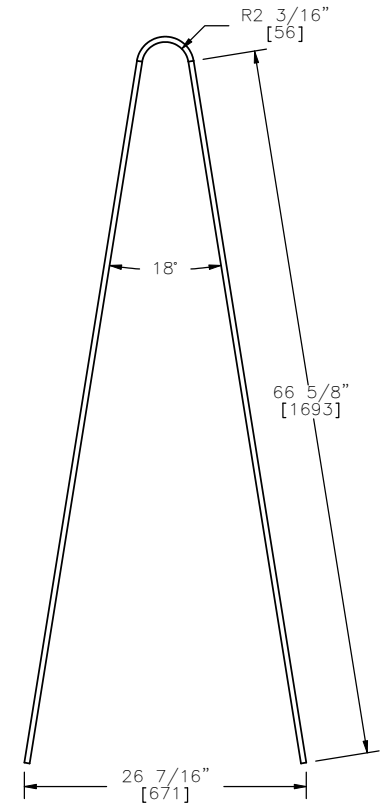
4e1



5e2



6e2



6e1

Bill Of Bars			
Mark	Bar No.	Quantity	Material
4e1	4	14	A615 Gr. 60
5e1	5	10	A615 Gr. 60
5e2	4	28	A615 Gr. 60
6e1	4	13	A615 Gr. 60
6e2	5	14	A615 Gr. 60



Midwest Roadside Safety Facility

Temporary Barrier Transition

Bill of Bars—
California Permanent
Barrier

DWG. NAME:
TempBarrTransition_R6_TCBT-1

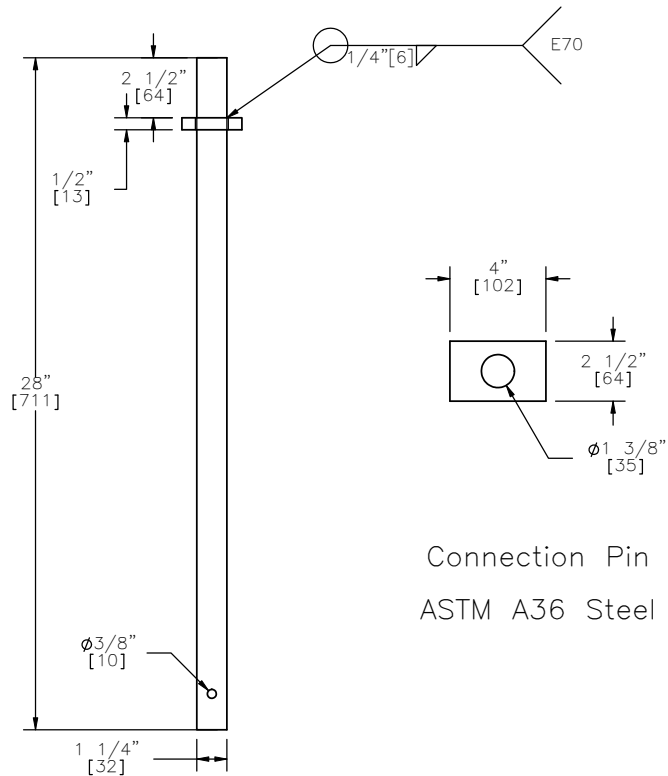
SCALE: 1:18
UNITS: In.,[mm]

SHEET:
12 of 17

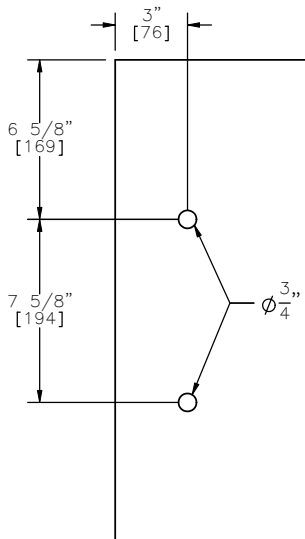
DATE:
3-30-08

DRAWN BY:
RJT

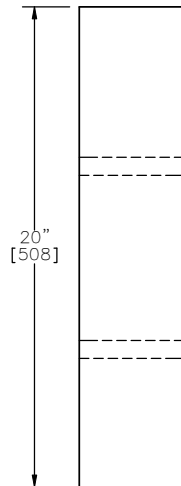
REV. BY:
KAP/BWB



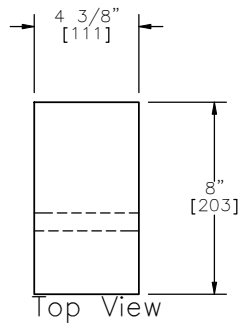
Connection Pin
ASTM A36 Steel



Front View



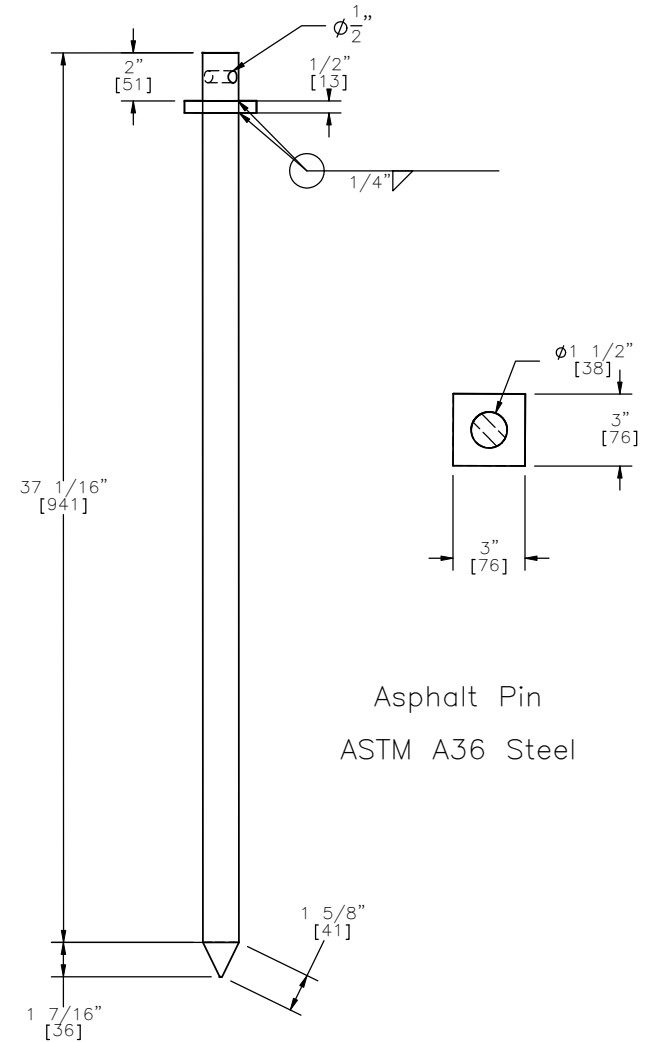
Side View



Top View

Blockout

Note: Trim blockout to fit.



Asphalt Pin
ASTM A36 Steel



Midwest Roadside
Safety Facility

Temporary Barrier Transition

Connection Pin, Asphalt
Pin, and Blockout
Detail View

DWG. NAME:
TempBarrTransition_R6_TCBT-1

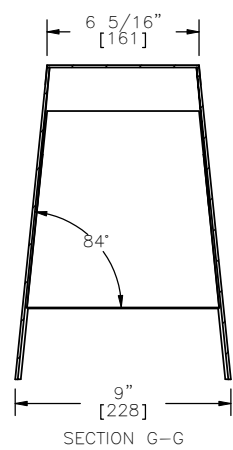
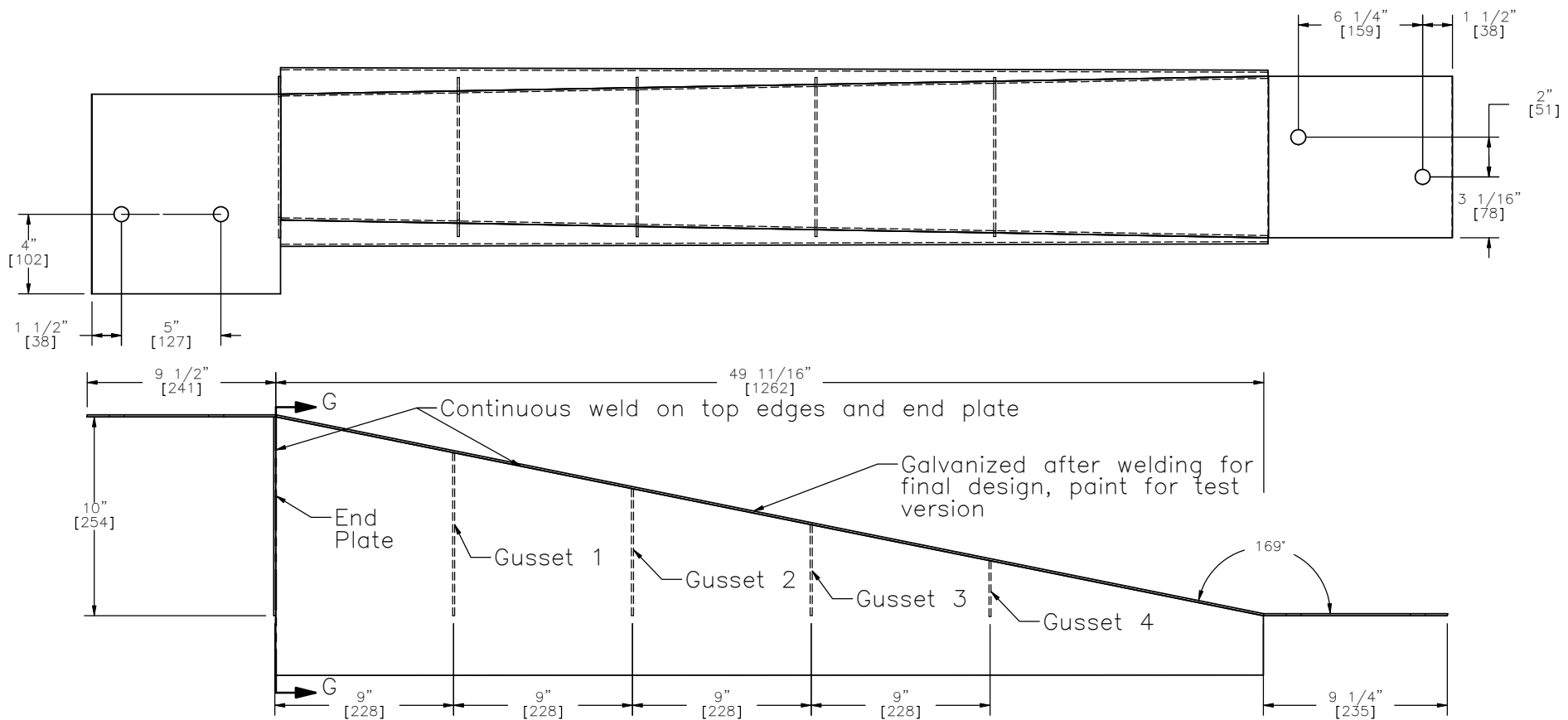
SCALE: 1:8
UNITS: In.,[mm]

SHEET:
13 of 17


DATE:
3-30-08

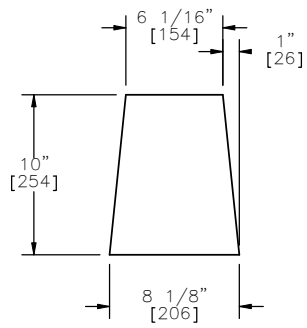
DRAWN BY:
RJT

REV. BY:
KAP/BWB

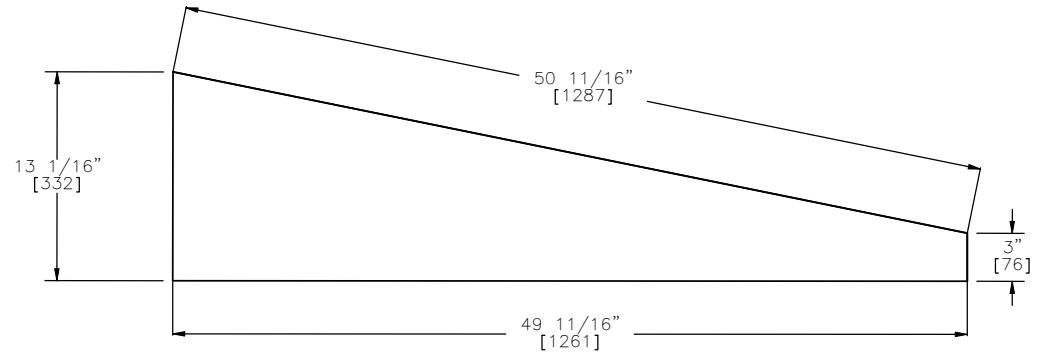


- Notes:
- (1) Four gussets and end plate are stitch welded on three sides.
 - (2) Two triangular side plates are stitch welded to top plate, end plate, and gussets.

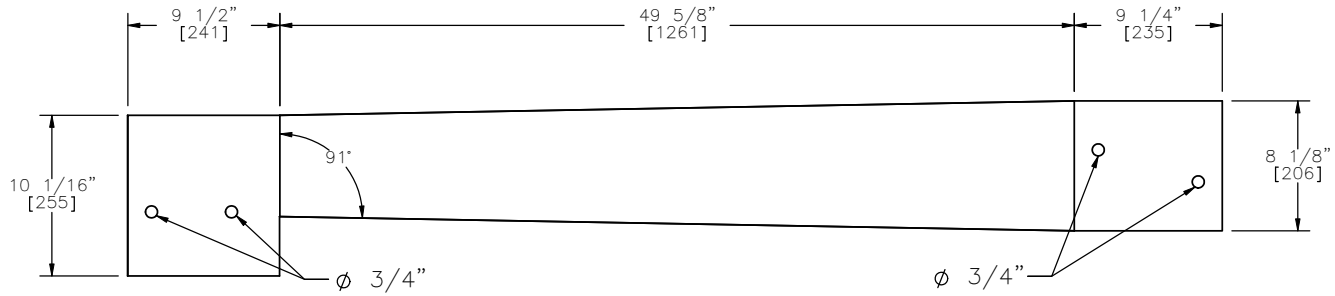
 Midwest Roadside Safety Facility	Temporary Barrier Transition Cap Rail Transition		SHEET: 14 of 17
	DWG. NAME: TempBarrTransition_R6_TCBT-1		DATE: 3-30-08
		SCALE: 1:8 UNITS: In.[mm]	DRAWN BY: RJT
		REV. BY: KAP/BWB	



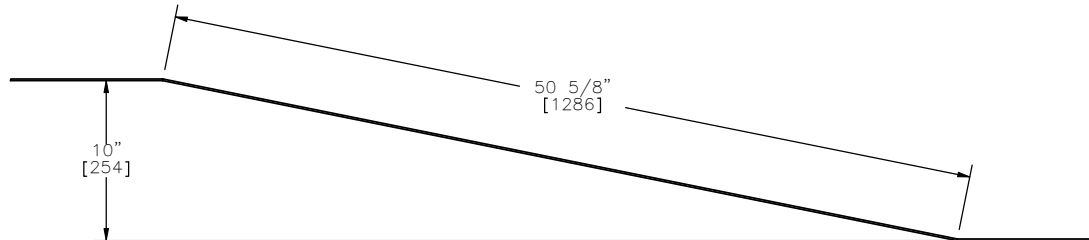
End Plate
12-Gauge
ASTM A36



Side Plate
12-Gauge
ASTM A36



Top Plate
12-Gauge
ASTM A36



Midwest Roadside
Safety Facility

Temporary Barrier Transition

Cap Side, Top, and
End Plates

DWG. NAME.
TempBarrTransition_R6_TCBT-1

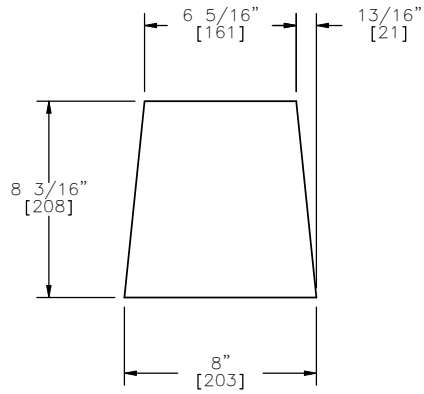
SCALE: 1:12
UNITS: In.,[mm]

SHEET:
15 of 17

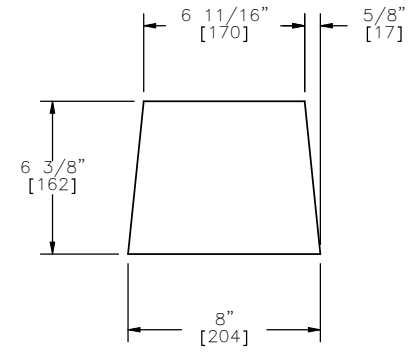
DATE:
3-30-08

DRAWN BY:
RJT

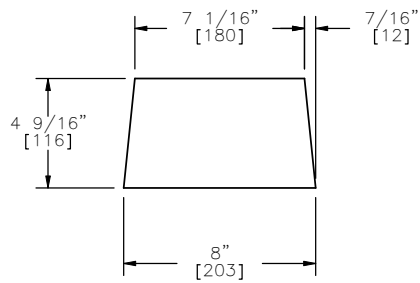
REV. BY:
KAP/BWB



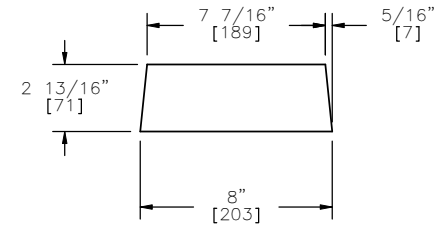
Gusset 1
12-Gauge
ASTM A36



Gusset 2
12-Gauge
ASTM A36



Gusset 3
12-Gauge
ASTM A36



Gusset 4
12-Gauge
ASTM A36



Midwest Roadside
Safety Facility

Temporary Barrier Transition
Gussets

DWG. NAME.
TempBarrTransition_R6_TCBT-1

SCALE: 1:8
UNITS: In.[mm]

SHEET:
16 of 17
DATE:
3-30-08
DRAWN BY:
RJT
REV. BY:
KAP/BWB