

PLAN VIEW



ELEVATION VIEW

- Notes: (1) Test shall be performed according to test designation no. 3-72 of MASH criteria.  
 (2) A 50-lb [22.7-kg] sandbag shall be added to each leg (4 per barricade, for 200 lb [90.7 kg]).  
 (3) For the second impact, sign (part c1) shall be placed on upstream side of barricade.



Midwest Roadside Safety Facility

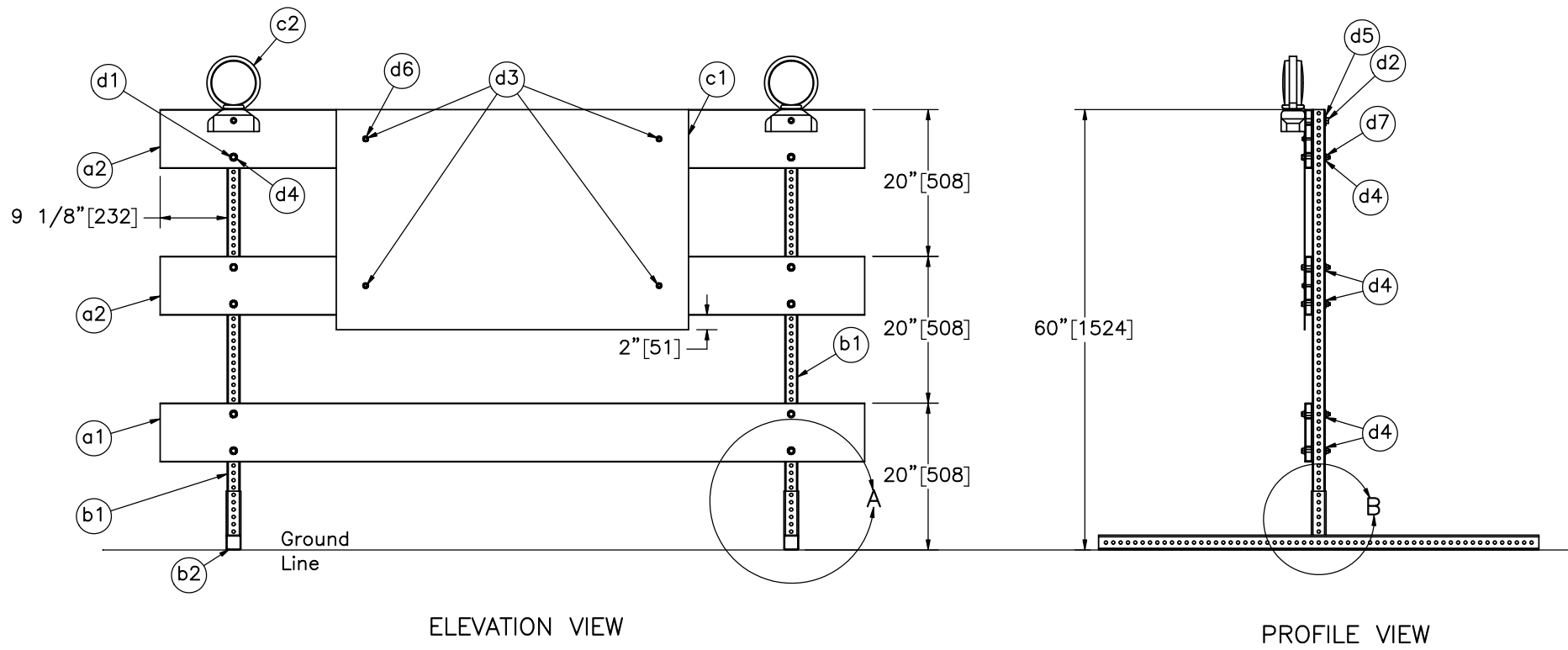
Type III Barricade  
 Test No. WZNP-2

Test Layout

DWG. NAME.  
 WZNP-2\_R1

SCALE: 1:130  
 UNITS: in.[mm]

SHEET:  
 1 of 8  
 DATE:  
 7/22/2020  
 DRAWN BY:  
 DJW/SBW  
 REV. BY:  
 MAP



ELEVATION VIEW

PROFILE VIEW

- Note: (1) Total barricade weight = 61 lb [27.7 kg].  
 (2) Additional washers (parts d4 and d5) on the opposite side.  
 (3) Additional washers and nuts (parts d6 and d8) on the opposite side of aluminum sign.



Midwest Roadside Safety Facility

Type III Barricade  
 Test No. WZNP-2

Barricade Overview

DWG. NAME:  
 WZNP-2\_R1

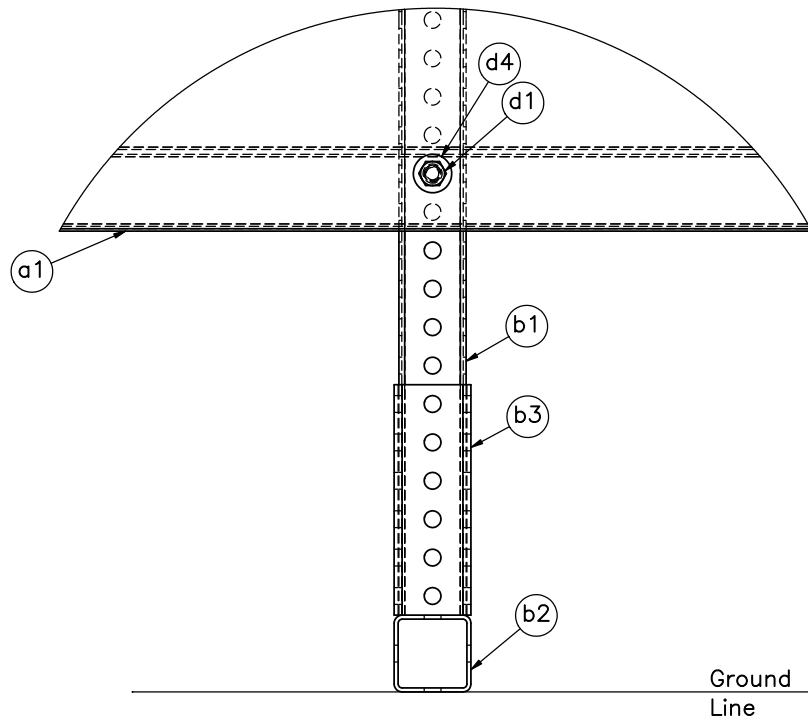
SCALE: 1:22  
 UNITS: in.[mm]

SHEET:  
 2 of 8

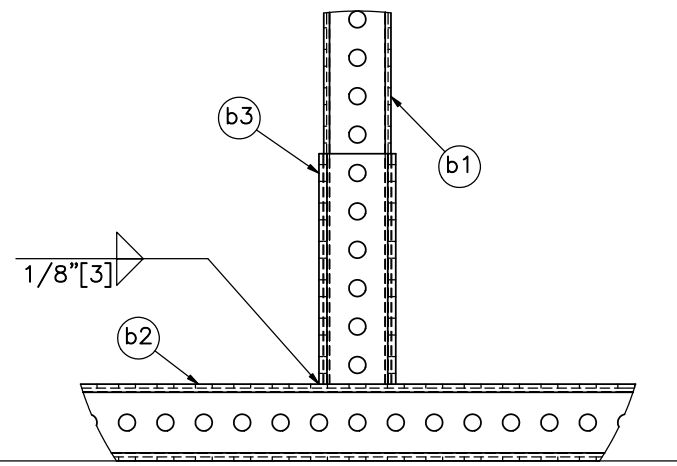
DATE:  
 7/22/2020

DRAWN BY:  
 DJW/SBW


REV. BY:  
 MAP

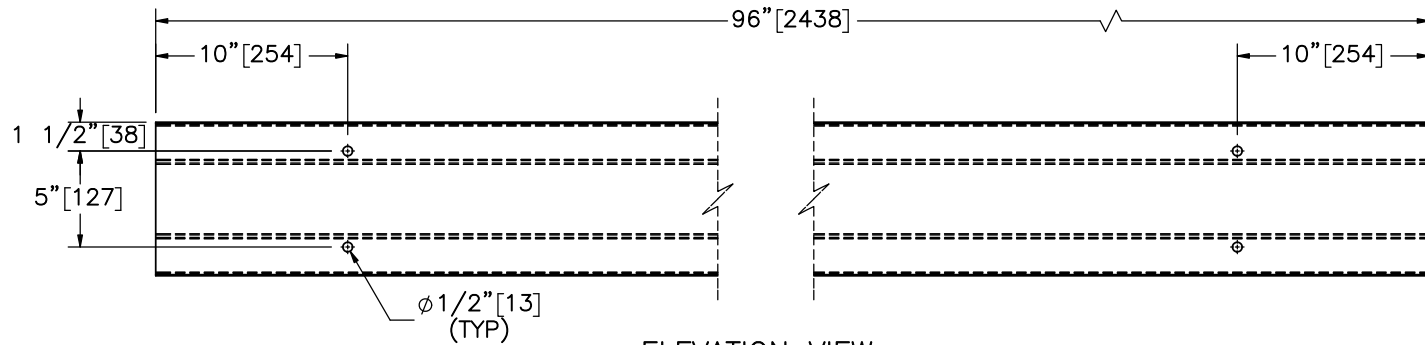


DETAIL A

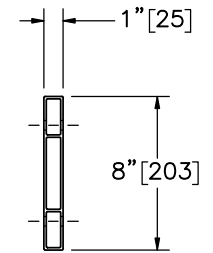


DETAIL B

	Type III Barricade Test No. WZNP-2		SHEET: 3 of 8
	Barricade Details		DATE: 7/22/2020
Midwest Roadside Safety Facility	DWG. NAME: WZNP-2_R1	SCALE: 1:5 UNITS: in.[mm]	DRAWN BY: DJW/SBW
			REV. BY: MAP

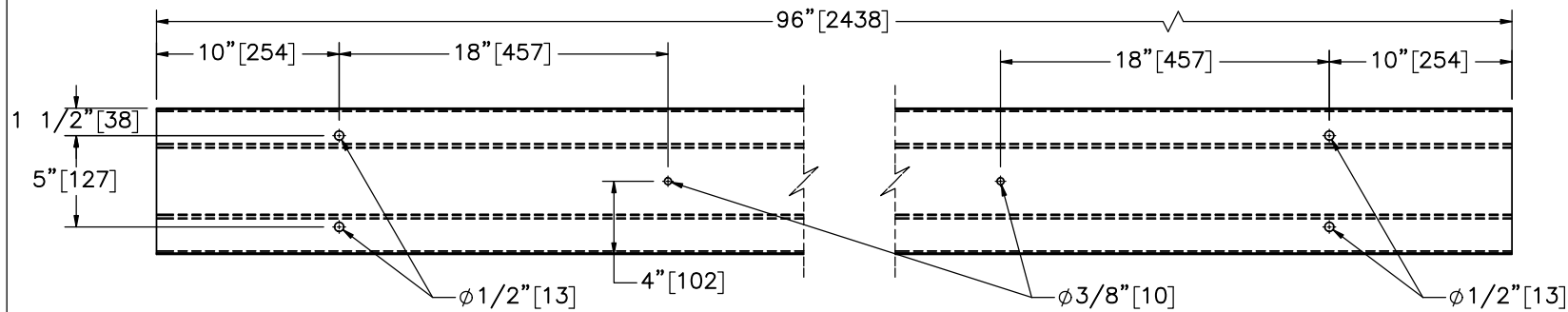


ELEVATION VIEW

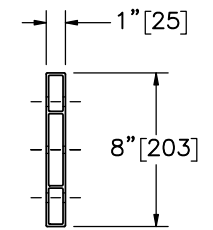


PROFILE VIEW

Part a1



ELEVATION VIEW



PROFILE VIEW

Part a2

Note: (1) Holes will be drilled at site after ordering.  
 (2) Board height, width, and profile may vary by manufacturer.



Midwest Roadside  
Safety Facility

Type III Barricade  
Test No. WZNP-2

Plastic Beam Details

DWG. NAME.  
WZNP-2\_R1

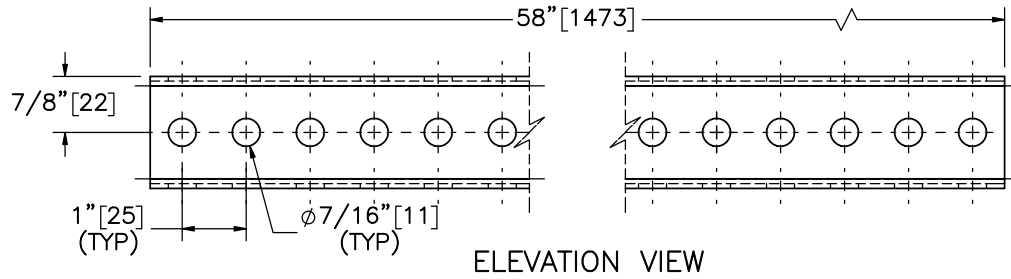
SCALE: 1:10  
UNITS: in.[mm]

SHEET:  
4 of 8

DATE:  
7/22/2020

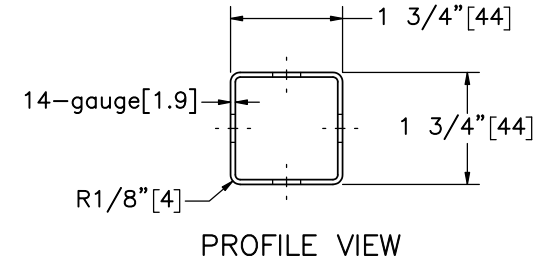
DRAWN BY:  
DJW/SBW

REV. BY:  
MAP

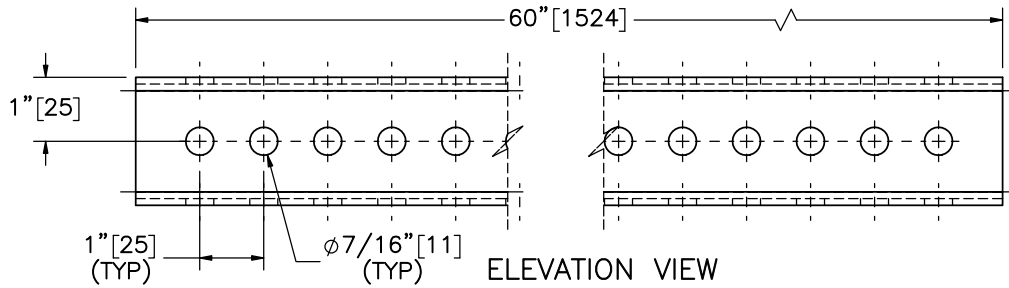


ELEVATION VIEW

Part b1

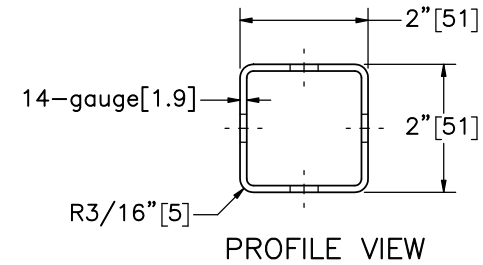


PROFILE VIEW

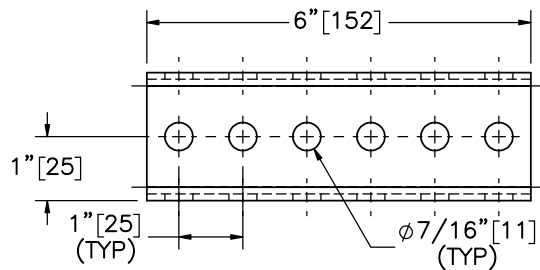


ELEVATION VIEW

Part b2

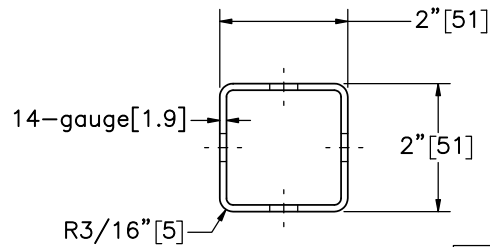


PROFILE VIEW



ELEVATION VIEW

Part b3



PROFILE VIEW



Midwest Roadside  
Safety Facility

Type III Barricade  
Test No. WZNP-2

Perforated Steel Tube Details

DWG. NAME.  
WZNP-2\_R1

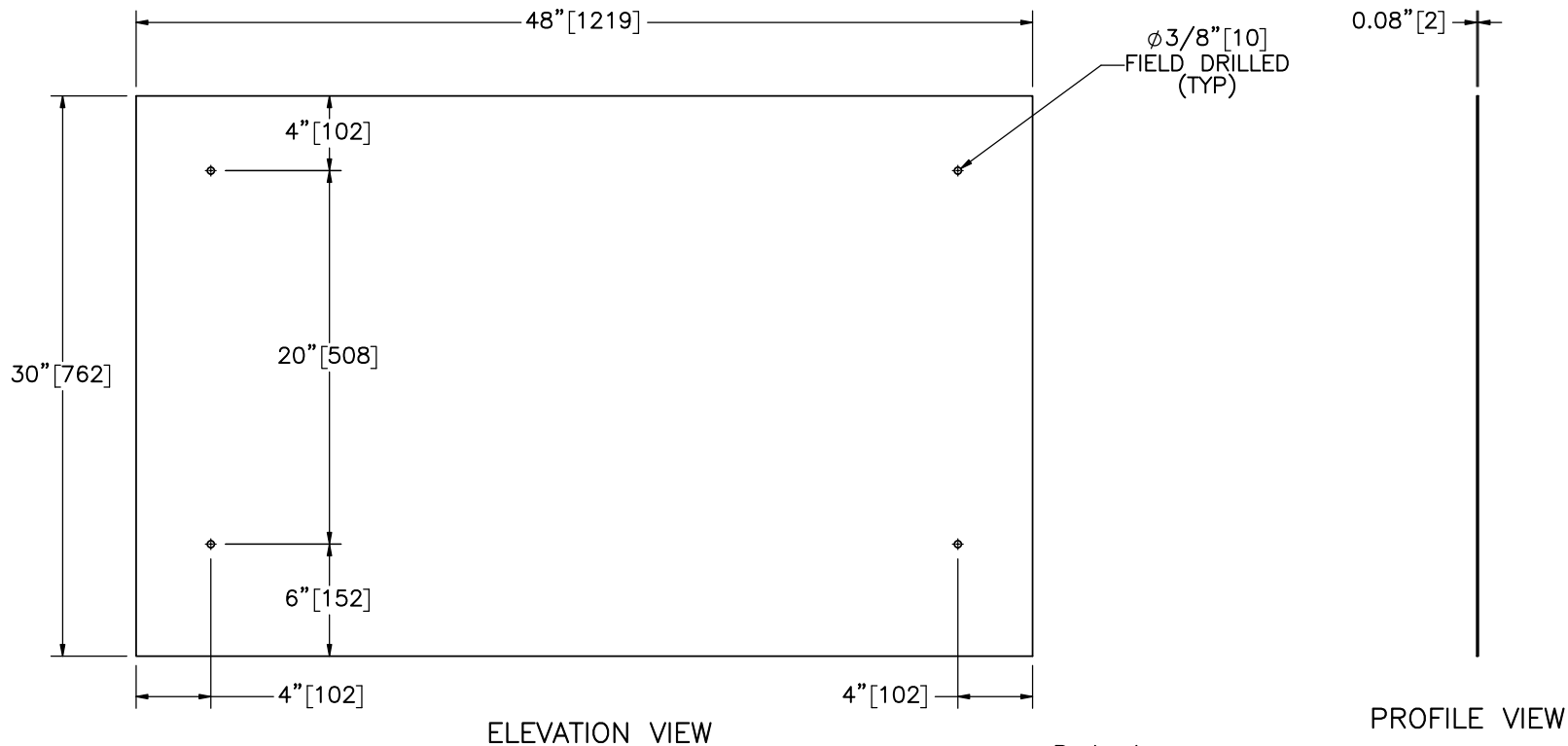
SCALE: 1:3  
UNITS: in.[mm]

SHEET:  
5 of 8

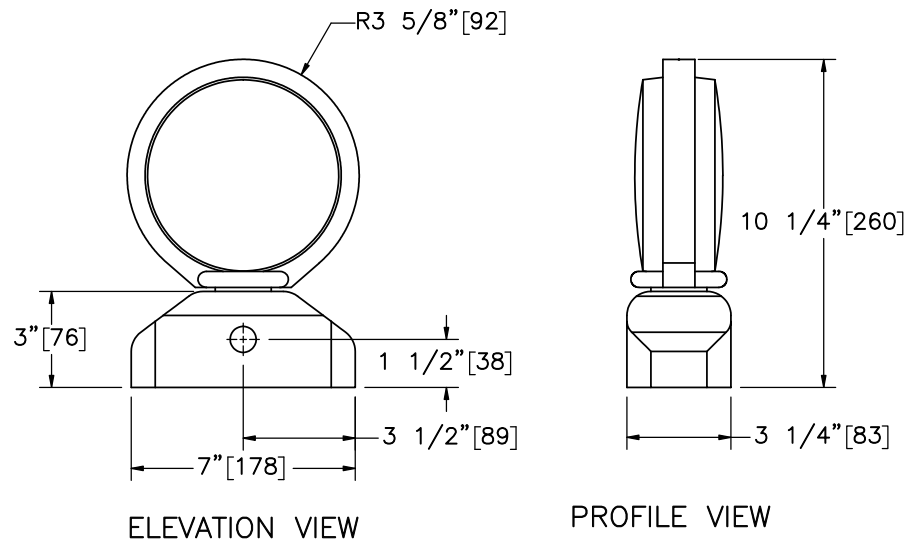
DATE:  
7/22/2020

DRAWN BY:  
DJW/SBW

REV. BY:  
MAP




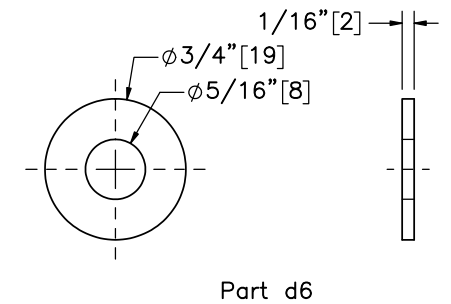
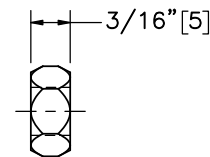
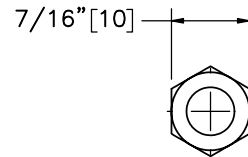
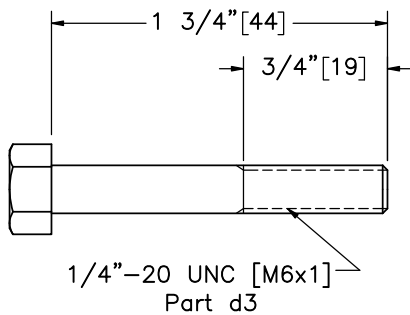
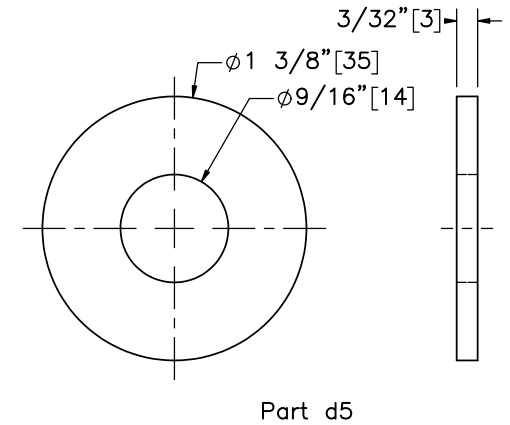
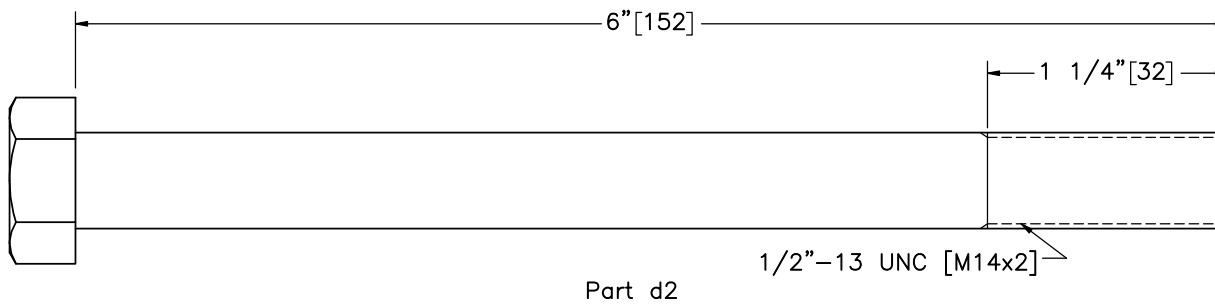
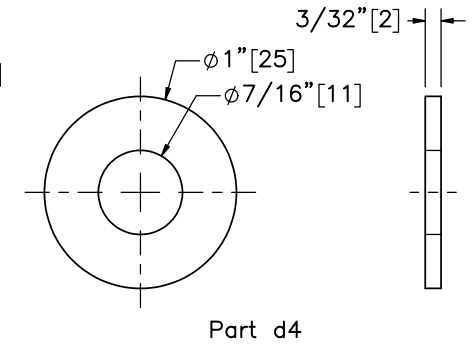
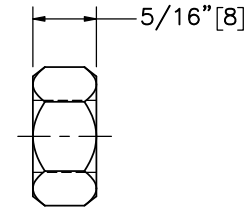
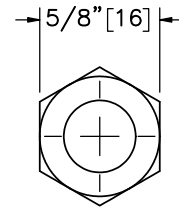
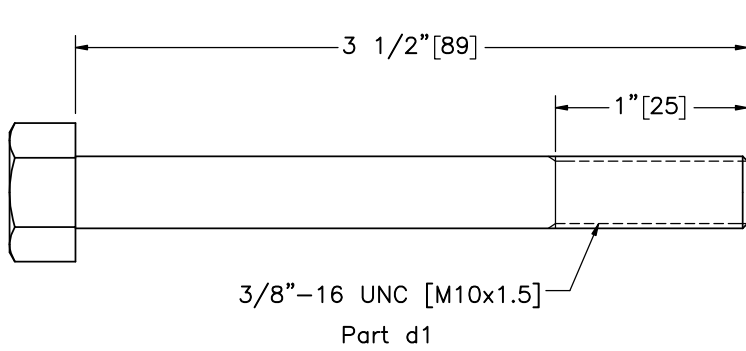
Part c1



Part c2

Note: (1) Dimensions for part c2 will vary by manufacturer.

	Type III Barricade Test No. WZNP-2		SHEET: 6 of 8
	Sign and Warning Light Details		DATE: 7/22/2020
Midwest Roadside Safety Facility		DWG. NAME: WZNP-2_R1	DRAWN BY: DJW/SBW
		SCALE: 1:10 UNITS: in.[mm]	REV. BY: MAP



Note: (1) Part d2 length may vary by barricade rail manufacturer and diameter may vary by warning light manufacturer. Hole size in parts a2 and b1 may need to be adjusted to accommodate part d2.



Midwest Roadside Safety Facility

Type III Barricade  
Test No. WZNP-2

System Hardware

DWG. NAME:  
WZNP-2\_R1

SCALE: 1:1  
UNITS: in.[mm]

SHEET:  
7 of 8

DATE:  
7/22/2020

DRAWN BY:  
DJW/SBW

REV. BY:  
MAP

Item No.	QTY.	Description	Material Specification	Treatment Specification
a1	2	Plastic Panel, 96" [2,438] Long	High Density Polyethylene	—
a2	4	Plastic Panel, 96" [2,438] Long	High Density Polyethylene	—
b1	4	1 3/4"x1 3/4"x14-gauge [44x44x1.9], 58" [1,473] Long Perforated Square Tubing	ASTM 1011 Gr. 55 Min. yield 60 ksi [414 MPa]	ASTM A653-G90 or AASHTO M-120
b2	4	2"x2"x14-gauge [51x51x1.9], 60" [1,524] Long Perforated Square Tubing	ASTM 1011 Gr. 55 Min. yield 60 ksi [414 MPa]	ASTM A653-G90 or AASHTO M-120
b3	4	2"x2"x14-gauge [51x51x1.9], 6" [152] Long Perforated Square Tubing	ASTM 1011 Gr. 55 Min. yield 60 ksi [414 MPa]	ASTM A653-G90 or AASHTO M-120
c1	2	48"x30"x0.08" [1,219x762x2] Sign with Reflective Sheeting	Aluminum Alloy 5052 or similar	—
c2	4	Warning Light (Type A or C)	As Supplied	—
d1	20	3/8"-16 UNC [M10x1.5], 3 1/2" [89] Long Hex Head Bolt	ASTM A307 Gr. A or equivalent	Fe/Zn 3AN per ASTM F1941
d2	4	1/2"-13 UNC [M14x2], 6" [152] Long Hex Head Bolt	ASTM A307 Gr. A or equivalent	Fe/Zn 3AN per ASTM F1941
d3	8	1/4"-20 UNC [M6x1], 1 3/4" [44] Long Hex Head Bolt	ASTM A307 Gr. A or equivalent	Fe/Zn 3AN per ASTM F1941
d4	40	3/8" [10] Dia. Plain USS Washer	Low Carbon Steel	Fe/Zn 3AN per ASTM F1941
d5	4	1/2" [13] Dia. Plain USS Washer	Low Carbon Steel	Fe/Zn 3AN per ASTM F1941
d6	16	1/4" [6] Dia. Plain USS Washer	Low Carbon Steel	Fe/Zn 3AN per ASTM F1941
d7	20	3/8"-16 UNC [M10x1.5] Lock Nut	SAE J995 Gr. 2 or equivalent	Fe/Zn 3AN per ASTM F1941
d8	8	1/4"-20 UNC [M6x1] Lock Nut	SAE J995 Gr. 2 or equivalent	Fe/Zn 3AN per ASTM F1941

Note: (1) Part c1 shall have a reflective sheeting.  
(2) Parts a1 & a2 will have orange and white striped reflective sheeting on at least one side (sign panel side).



Midwest Roadside  
Safety Facility

Type III Barricade  
Test No. WZNP-2

Bill of Materials

DWG. NAME.  
WZNP-2\_R1

SCALE: None  
UNITS: in./mm

SHEET:  
8 of 8

DATE:  
7/22/2020

DRAWN BY:  
DJW/SBW

REV. BY:  
MAP



System: SWZDI Barricade  
Drawing: WZNP-2

Revision History

REV.	DATE OF ISSUE	Page	NATURE OF CHANGES	REVIEWER	REVISED BY
0	2/4/2019	-	Created from WZNP-1_R15.	-	DJW
1	7/22/2020	All	Changed system name from Type 3 Barricade to Type III Barricade.	MAP	SBW
		1	Changed offset notes from referencing car to vehicle.		
		4	Renamed page to Plastic Beam Details.		