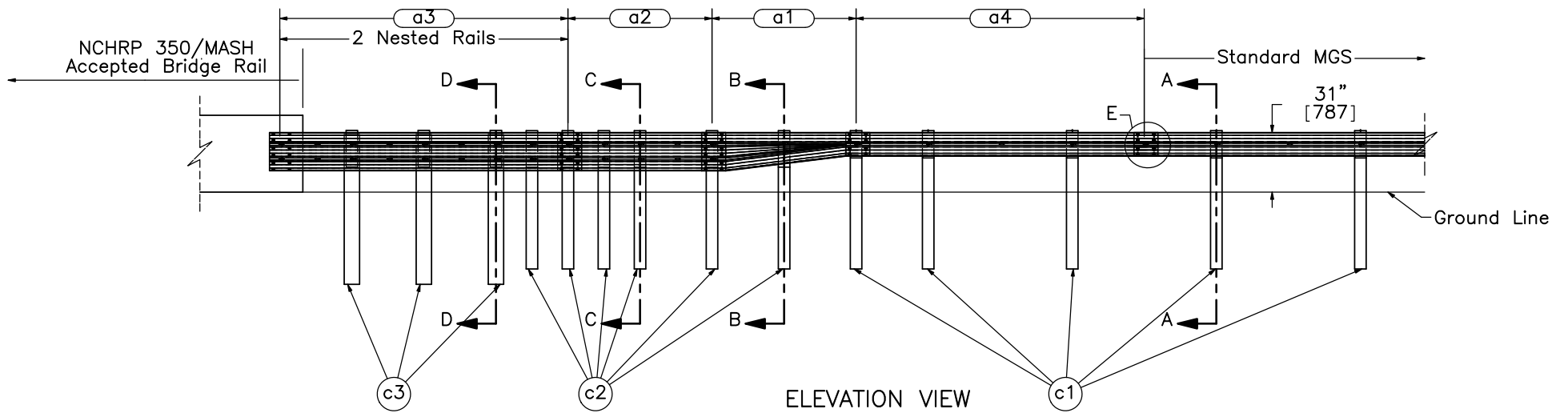


PLAN VIEW



ELEVATION VIEW



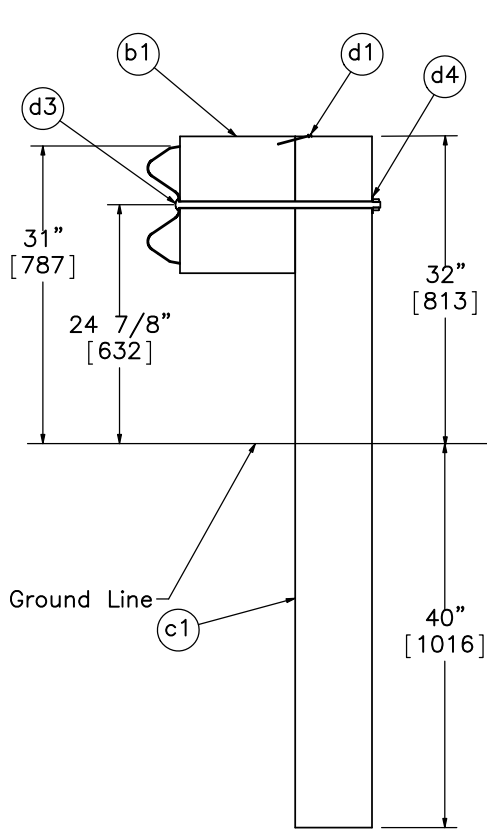
Midwest Roadside
Safety Facility

MWT Wood Post
System Layout

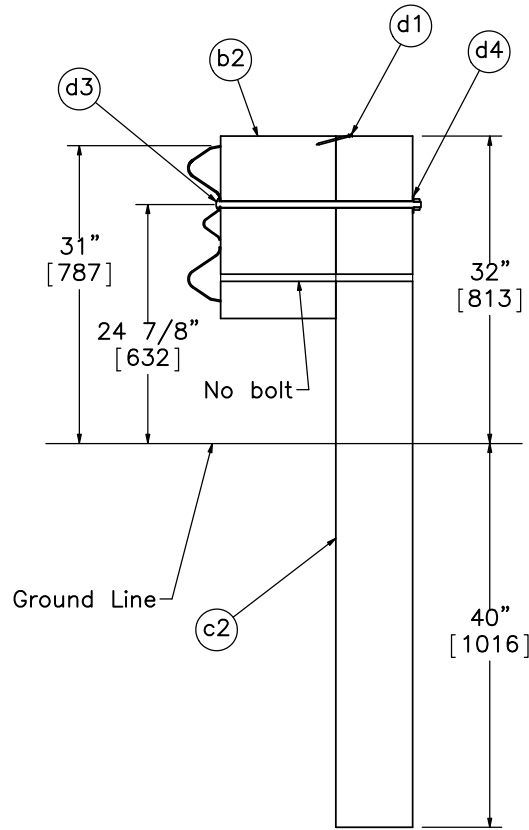
DWG. NAME.
MWT-SP-Wood_R5

SCALE: 1:80
UNITS: In.[mm]

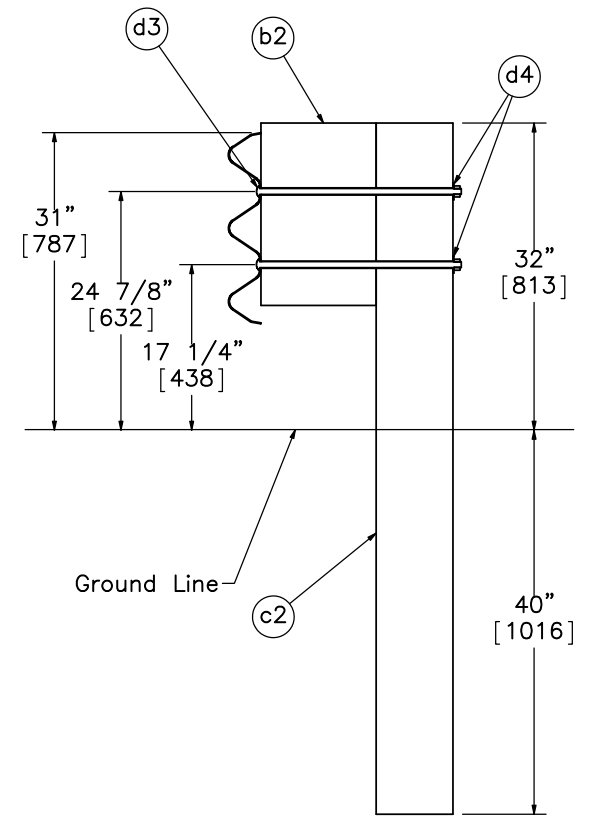
SHEET:
1 of 6
DATE:
7/12/2011
DRAWN BY:
EMA/RJT/
JGP/MDM
REV. BY:
KAL/SKR/
RKF



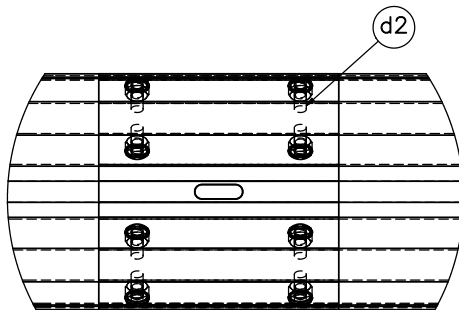
SECTION A-A
Post Nos. 3-9



SECTION B-B
Post No. 10



SECTION C-C
Post Nos. 11-15



DETAIL E
SCALE 1 : 10



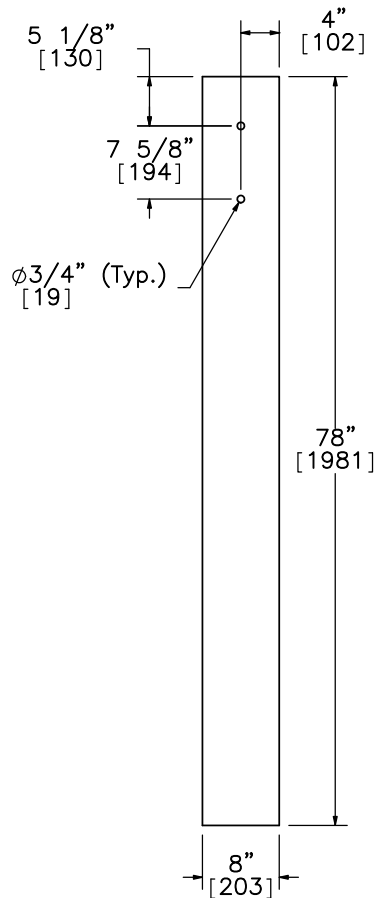
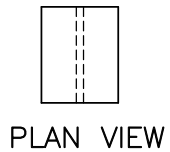
Midwest Roadside
Safety Facility

MWT Wood Post
Post Nos. 3-15
Details with Rail

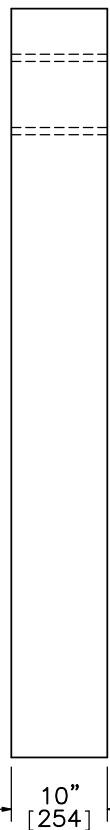
DWG. NAME.
MWT-SP-Wood_R5

SCALE: 1:20
UNITS: In.[mm]

SHEET:
2 of 6
DATE:
7/12/2011
DRAWN BY:
EMA/RJT/
JGP/MDM
REV. BY:
KAL/SKR/
RKF

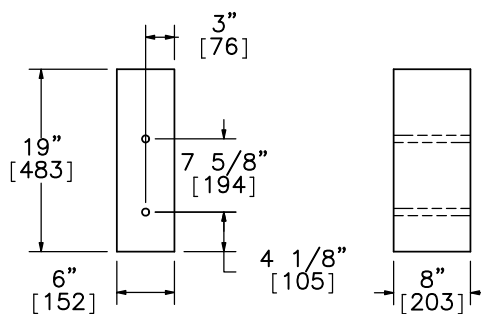
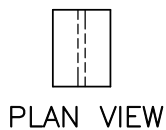


ELEVATION VIEW



PROFILE VIEW

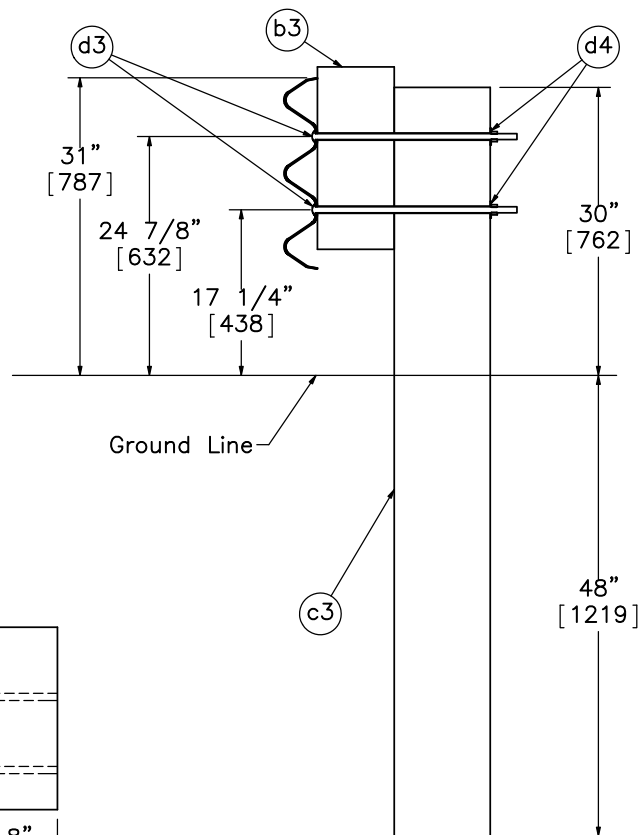
Post Nos. 16-18
Part c3



ELEVATION VIEW

PROFILE VIEW

Blockout
Post Nos. 16-18
Part b3



SECTION D-D
Post Nos. 16-18



Midwest Roadside
Safety Facility

MWT Wood Post
Post Nos. 16-18 Details

SHEET:
3 of 6

DATE:
7/12/2011

DRAWN BY:
EMA/RJT/
JGP/MDM

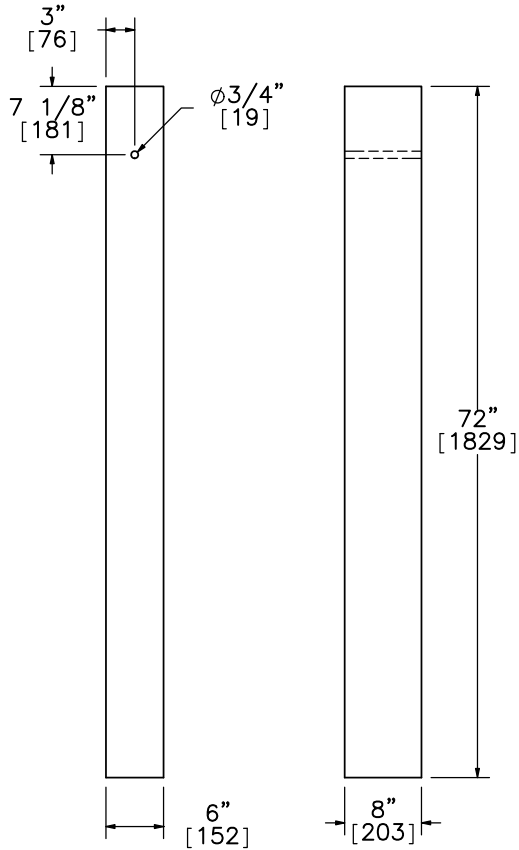
REV. BY:
KAL/SKR/
RKF

DWG. NAME:
MWT-SP-Wood_R5

SCALE: 1:20
UNITS: In./mm



PLAN VIEW

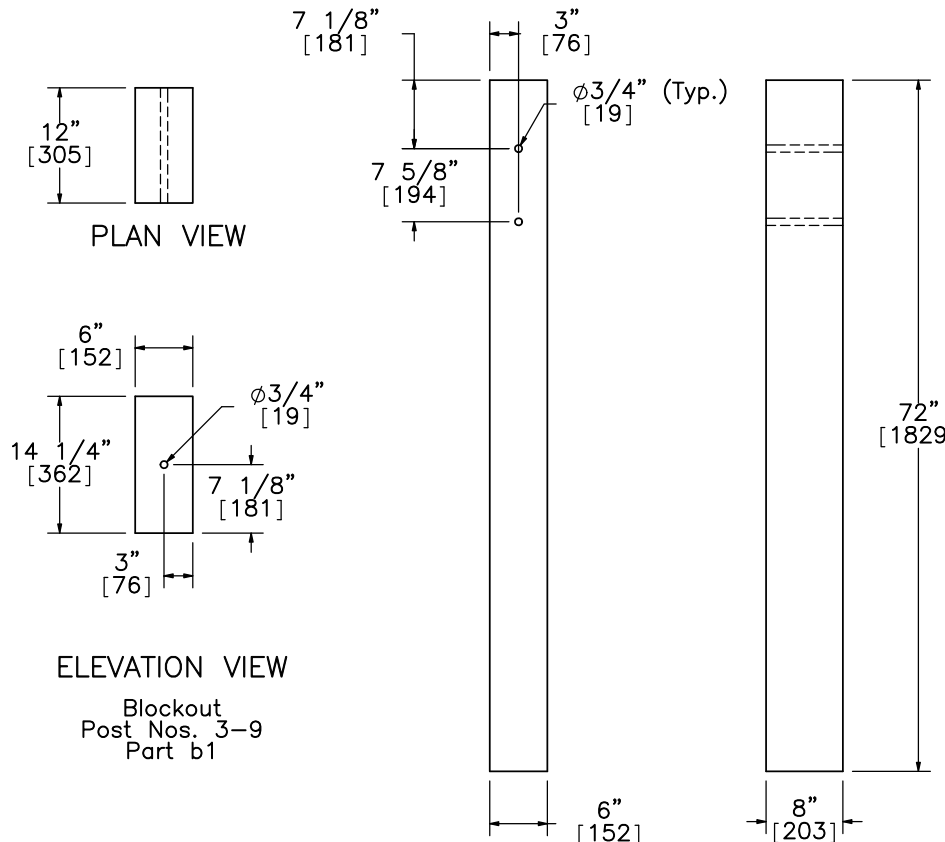


ELEVATION VIEW PROFILE VIEW

Post Nos. 3-9
Part c1

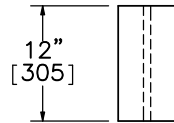


PLAN VIEW

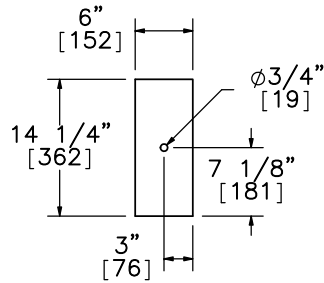


ELEVATION VIEW PROFILE VIEW

Post Nos. 10-15
Part c2

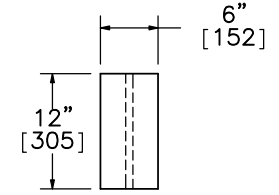


PLAN VIEW

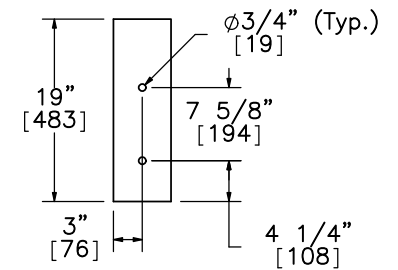


ELEVATION VIEW

Blockout
Post Nos. 3-9
Part b1



PLAN VIEW



ELEVATION VIEW

Blockout
Post Nos. 10-15
Part b2



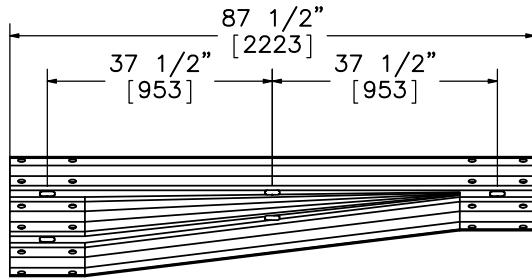
Midwest Roadside
Safety Facility

MWT Wood Post
Post Nos. 3-15 Details

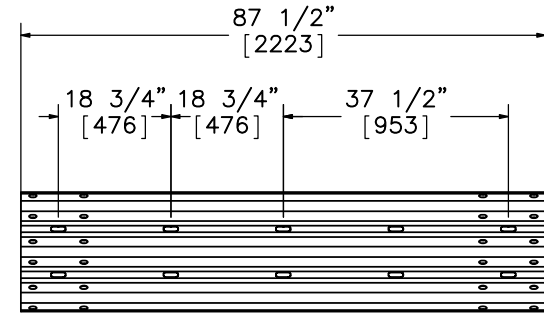
DWG. NAME.
MWT-SP-Wood_R5

SCALE: 1:20
UNITS: In.,[mm]

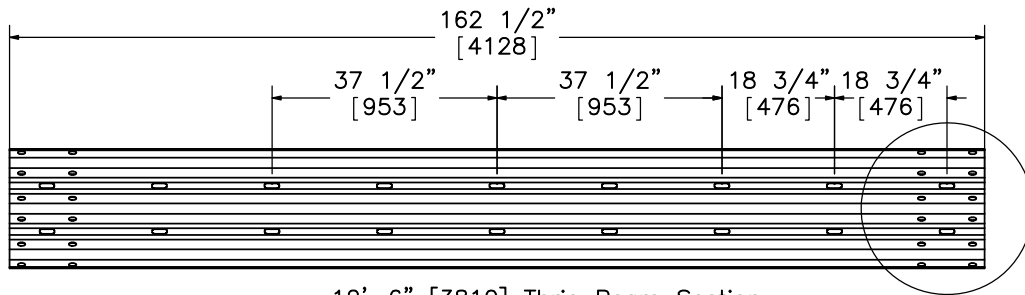
SHEET:	4 of 6
DATE:	7/12/2011
DRAWN BY:	EMA/RJT/ JGP/MDM
REV. BY:	KAL/SKR/ RKF



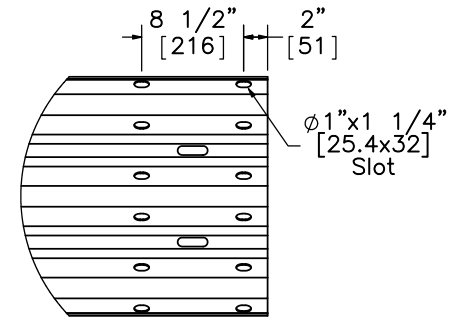
6'-3" [1905] W to Thrie Beam Transition Section



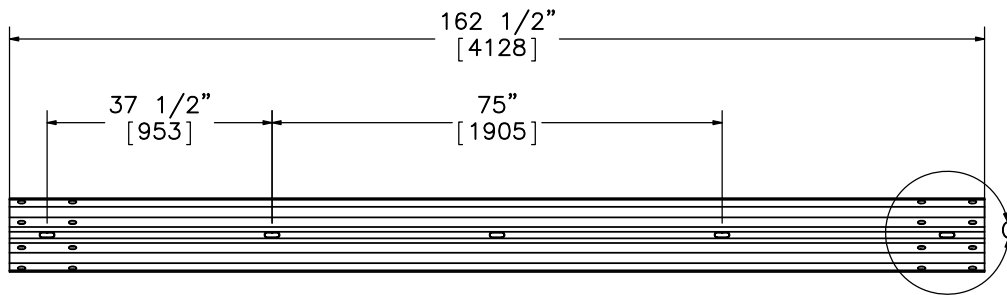
6'-3" [1905] Thrie Beam Section



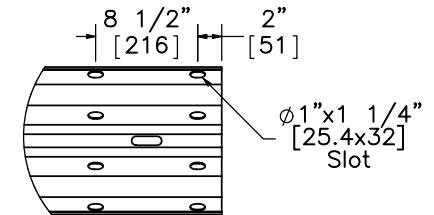
12'-6" [3810] Thrie Beam Section



DETAIL F
SCALE 1 : 16



12'-6" [3810] W-Beam Section



DETAIL G
SCALE 1 : 16



Midwest Roadside
Safety Facility

MWT Wood Post

Rail Section Details

DWG. NAME.
MWT-SP-Wood_R5

SCALE: 1:100
UNITS: In.[mm]

SHEET:
5 of 6
DATE:
7/12/2011
DRAWN BY:
EMA/RJT/
JGP/MDM
REV. BY:
KAL/SKR/
RKF

Item No.	Description	Material Specification	Hardware Guide
a1	6'-3" [1905] W-Beam to Thrie-Beam Transition Section	10 gauge AASHTO M180	RWT01b
a2	6'-3" [1905] Thrie Beam Section - 1/2 Post Spacing	12 gauge AASHTO M180	RTM02a
a3	12'-6" [3810] Thrie Beam Section - 1/2 Post Spacing	12 gauge AASHTO M180	RTM04a
a4	12'-6" [3810] W-Beam MGS Section	12 gauge AASHTO M180	RWM04a
b1	6x12x14 1/4" [152x305x362] Blockout - Post Nos. 3-9	SYP Grade No. 1 or better	PDB11a
b2	6x12x19" [152x305x483] Blockout - Post Nos. 10-15	SYP Grade No. 1 or better	-
b3	6x8x19" [152x203x483] Blockout - Post Nos. 16-18	SYP Grade No. 1 or better	-
c1	6x8" [152x203] 72" [1829] long - Post Nos. 3-9	SYP Grade No. 1 or better	PDE02
c2	6x8" [152x203] 72" [1829] long - Post Nos. 10-15	SYP Grade No. 1 or better	PDE02
c3	8x10" [203x254] 78" [1981] long - Post Nos. 16-18	SYP Grade No. 1 or better	-
d1	16D Double Head Nail	-	-
d2	5/8"Dia. x 1 1/2" [M16x38] Long Guardrail Bolt	ASTM A563	FBB01
d3	5/8"Dia. x 21" [M16x533] Long Guardrail Bolt	ASTM A563	FBB07
d4	5/8" [16] Dia. Flat Washer	F436 Gr. 1	FWC16a



Midwest Roadside
Safety Facility

MWT Wood Post
Bill of Materials

SHEET:
6 of 6

DATE:
7/12/2011

DRAWN BY:
EMA/RJT/
JGP/MDM

DWG. NAME:
MWT-SP-Wood_R5

SCALE: None
UNITS: In.[mm]

REV. BY:
KAL/SKR/
RKF