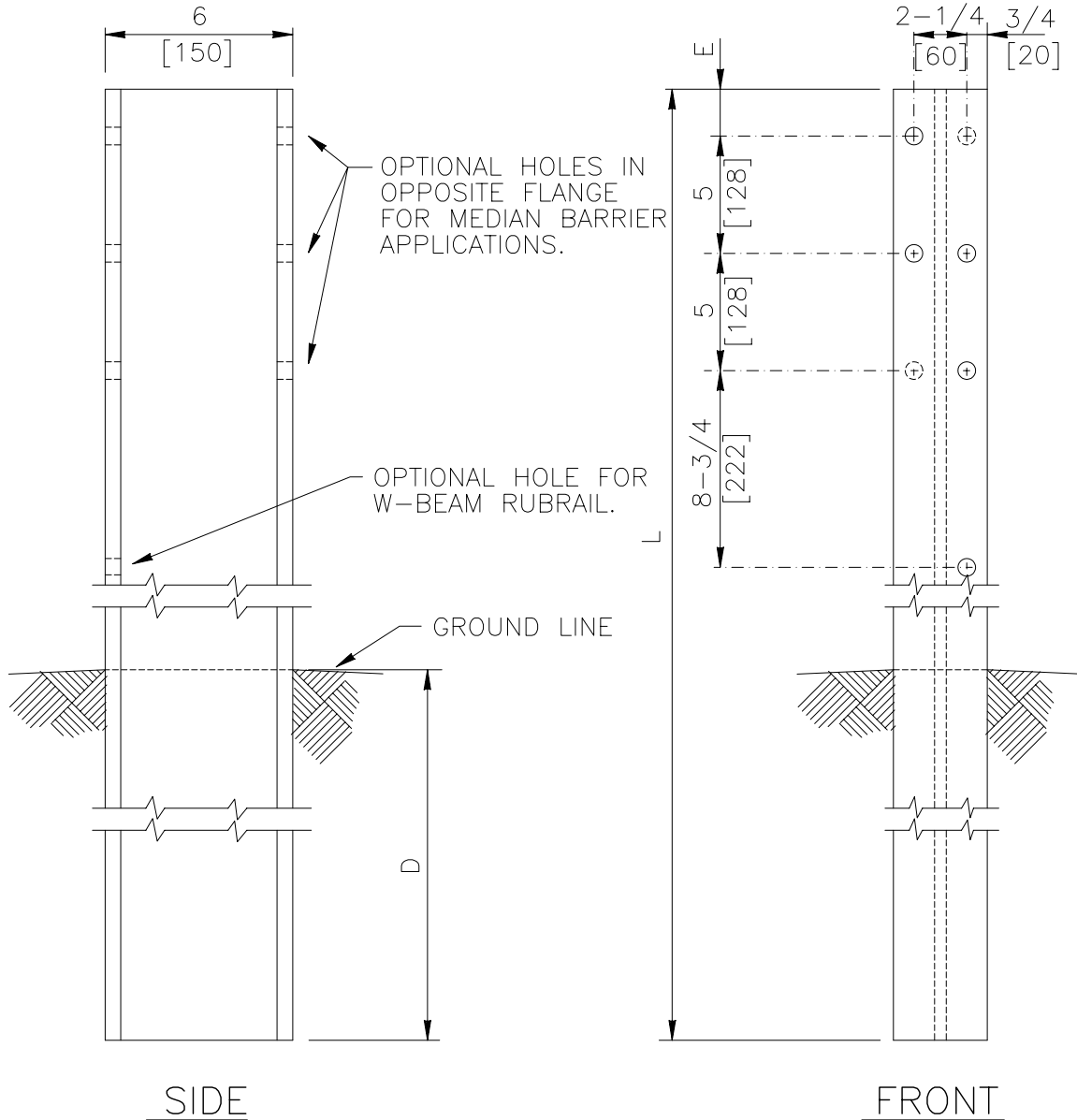
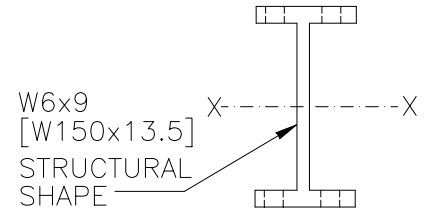


NOTE: ALL HOLES ARE 3/4 [20] D.

DESIGNATOR	L	D	E
PWE01	72 [1830]	43-1/4 [1100]	2 [52]
PWE02	78 [1980]	49-1/4 [1250]	2 [52]
PWE03	78 [1980]	45-3/8 [1153]	5-7/8 [149]
PWE04	81 [2060]	46-1/8 [1173]	5-7/8 [149]



1994

WIDE-FLANGE GUARDRAIL POST

PWE01-04

SHEET NO.

DATE:

1 of 2

7/27/2005

SPECIFICATIONS

W-beam and thrie-beam guardrail posts shall be manufactured using AASHTO M 270 / M 270M (ASTM A 709 / A 709M) Grade 36 [250] steel unless corrosion-resistant steel is required, in which case the post shall be manufactured from AASHTO M 270 / M 270M (ASTM A 709 / A 709M) Grade 50W [345W] steel. The dimensions of the cross-section shall conform to a W6x9 [W150x13.5] section as defined in AASHTO M 160 / M 160M (ASTM A 6 / A 6M). [W150x12.6] wide flange posts are an acceptable alternative that is considered equivalent to the [W150x13.5].

After the section is cut and all holes are drilled or punched, the component should be zinc-coated according to AASHTO M 111 (ASTM A 123) unless corrosion-resistant steel is used. When corrosion-resistant steel is used, the portion of the post to be embedded in soil shall be zinc-coated according to AASHTO M 111 (ASTM A 123) and the portion above the soil shall not be zinc-coated, painted or otherwise treated.

Designator	Area in ² [10 ³ mm ²]	I _x in ⁴ [10 ⁶ mm ⁴]	I _y in ⁴ [10 ⁶ mm ⁴]	S _x in ³ [10 ³ mm ³]	S _y in ³ [10 ³ mm ³]
PWE01-04	2.63 [1.7]	16.43 [6.84]	2.19 [0.91]	5.57 [91.2]	1.11 [18.2]

Dimensional tolerances not shown or implied are intended to be those consistent with the proper functioning of the part, including its appearance and accepted manufacturing practices.

INTENDED USE

Posts PWE01 and PWE02 are used with the SGR04a and SGR04c guardrails and the SGM04a median barrier. Blockouts like PWB01 (steel) or PDB01 (wood) are attached to each post.

Post PWE03 is used with the SGR09a guardrail and the SGM09a median barrier. Wood or plastic blockouts like the PWB02 are attached to each post with FBB03 bolts and FWC16a washers under the nuts.

Post PWE04 is used with the SGR09b guardrail and the SGM09b median barrier. A modified steel blockout PWB03 is attached to each post with at least two 1.5-inch [40 mm] long FBX16a bolts and nuts.

WIDE-FLANGE GUARDRAIL POST

PWE01-04

SHEET NO.

DATE

2 of 2

7/06/2005