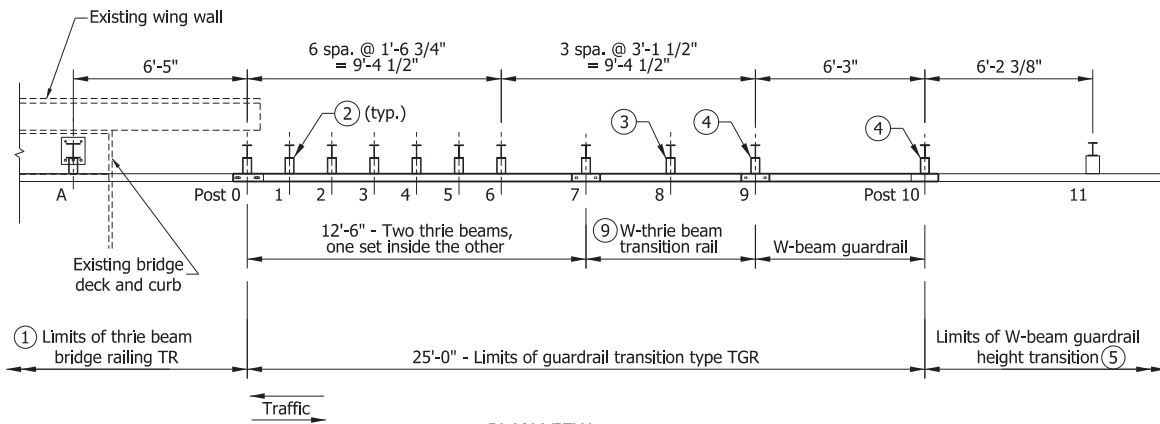


ELEVATION



PLAN VIEW

NOTES

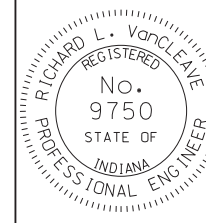
- ① See Standard Drawing E 706-BRTR-01 for thrie beam bridge railing TR.
- ② TGB transition post/blockout assembly. See Standard Drawing E 601-TTGB-03 for post and blockout details. Adjust post height to accommodate guardrail heights indicated on this sheet. Attach rail using two 5/8" Ø x 2" std. button head bolts with rectangular plate washers, round washers, and recess nuts.
- ③ W-thrie beam transition post/blockout assembly. See Standard Drawing E 601-TTGB-04 for post and blockout details. Adjust post height to accommodate guardrail heights indicated on this sheet. Attach rail using two 5/8" Ø x 2" std. button head bolts with rectangular plate washers, round washers, and recess nuts.
- ④ W-beam post/blockout assembly. See Standard Drawing E 601-TTGB-05 for post and blockout details. Adjust post height to accommodate guardrail heights indicated on this sheet. Attach rail using one 5/8" Ø x 1 1/4" std. button head bolt with rectangular plate washer, round washer, and recess nut.
- ⑤ See Standard Drawing E 706-BRTR-06 for W-beam guardrail height transition.
- ⑥ Twelve 5/8" Ø x 2" std. button head bolts with round washers and recess nuts, through rail sections.
- ⑦ Eight 5/8" Ø x 1 1/4" std. button head bolts with round washers and recess nuts.
- ⑧ Hand tighten post bolts on thrie beam expansion element and burr bolt threads.
- ⑨ See Standard Drawing E 601-TBGC-01 for W-thrie beam transition rail.

INDIANA DEPARTMENT OF TRANSPORTATION

RETROFIT THRIE BEAM
GUARDRAIL TRANSITION
TYPE TGR

SEPTEMBER 2012

STANDARD DRAWING NO. E 706-BRTR-05



/s/ Richard L. VanCleave 09/04/12

SUPERVISOR, ROADWAY STANDARDS DATE

/s/ Mark A. Miller 09/04/12

CHIEF ENGINEER DATE