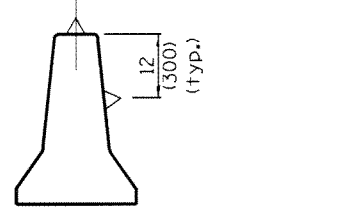
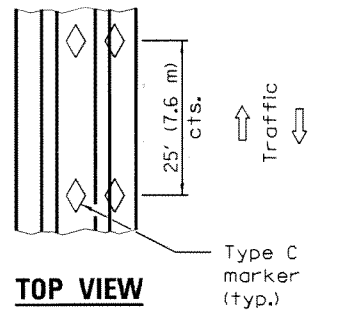
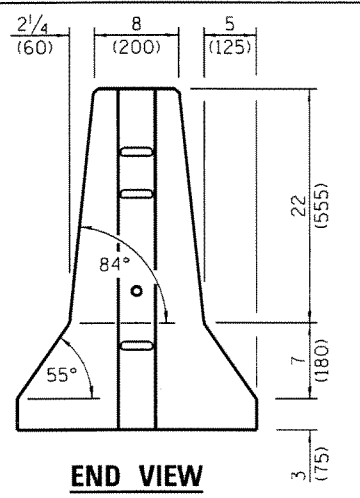


F SHAPE DESIGN



BARRIER WALL MARKERS

GENERAL NOTES

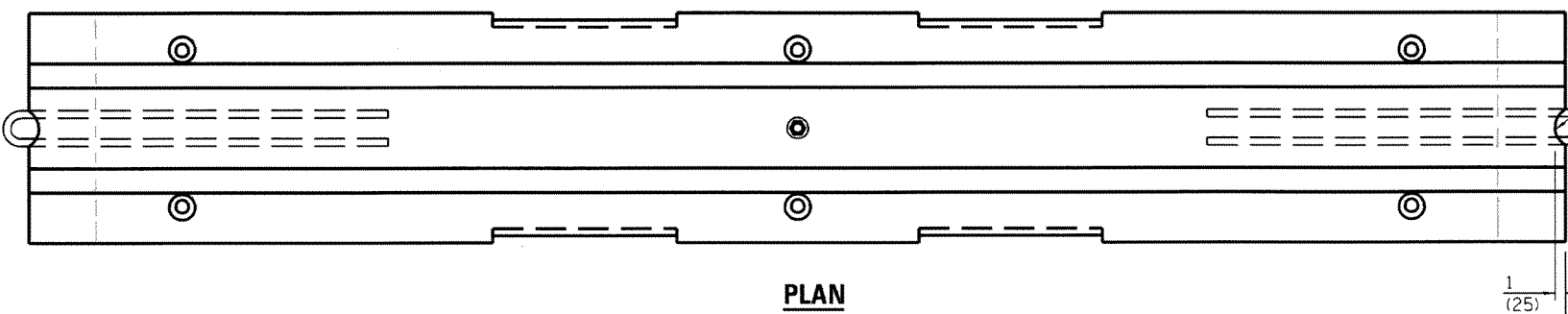
Each F shape barrier shall be clearly marked with "ILLINOIS F SHAPE", the Producer's mark and the date of manufacture. The markings shall be indented on the barrier or painted thereon with waterproof paint/ink.

The insert for the 1/2 (M12) bolt shall be capable of 3,000 lb (13 kN) pull-out strength.

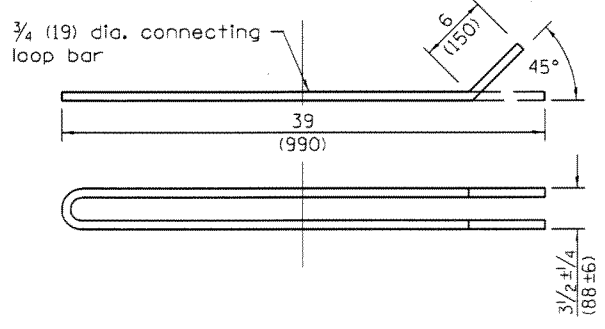
When barrier separates opposing flows of traffic markers shall be on both sides of barrier.

See Standard 635011 for dimensions of Type C marker.

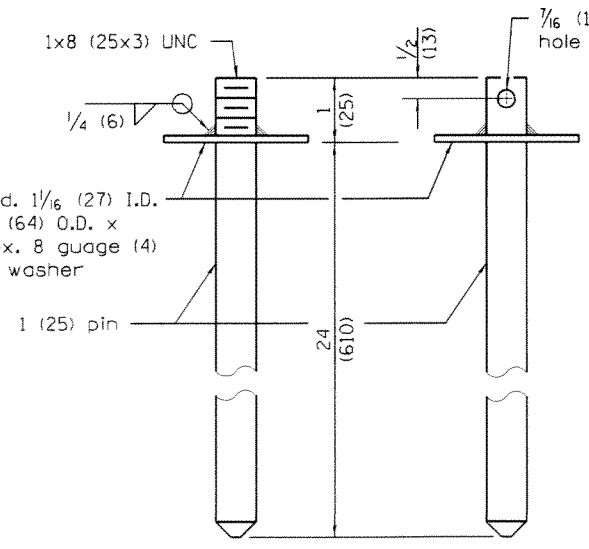
All dimensions are in inches (millimeters) unless otherwise shown.



PLAN



CONNECTING LOOP BAR

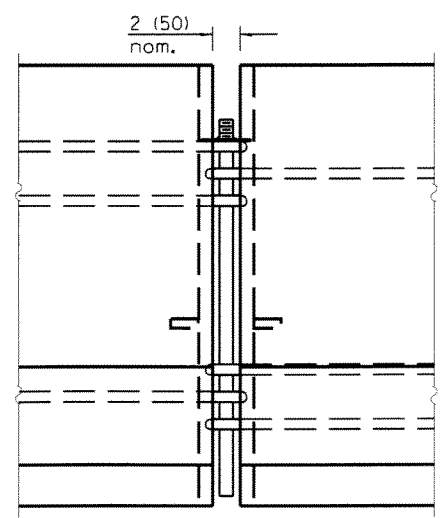


CONNECTING AND ANCHOR PINS

(End may be beveled 1/4 (6) max.)

END VIEW
(Showing lifting slot)

SECTION A-A
LIFTING SLOT



CONNECTING DETAIL

Illinois Department of Transportation PASSED January 1, 2012 Michael Beard ENGINEER OF POLICY AND PROCEDURES APPROVED January 1, 2012 Sattesh ENGINEER OF DESIGN AND ENVIRONMENT		ISSUED 10-1-01 (3)NS/ST 20-1-0-1
--	--	-------------------------------------

DATE	REVISIONS
1-1-12	Omitted "ALTERNATE" from connecting and anchoring pins detail.
1-1-10	Revised General Notes.

TEMPORARY CONCRETE BARRIER

(Sheet 1 of 2)

STANDARD 704001-07