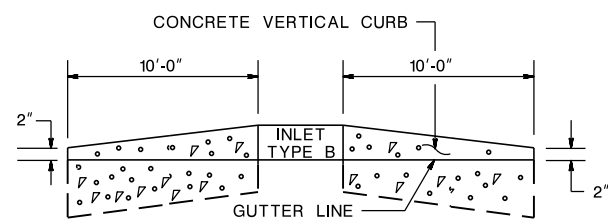


NOTE: A RAIL HEIGHT TRANSITION MAY ALSO BE REQUIRED. SEE CD-609-5.

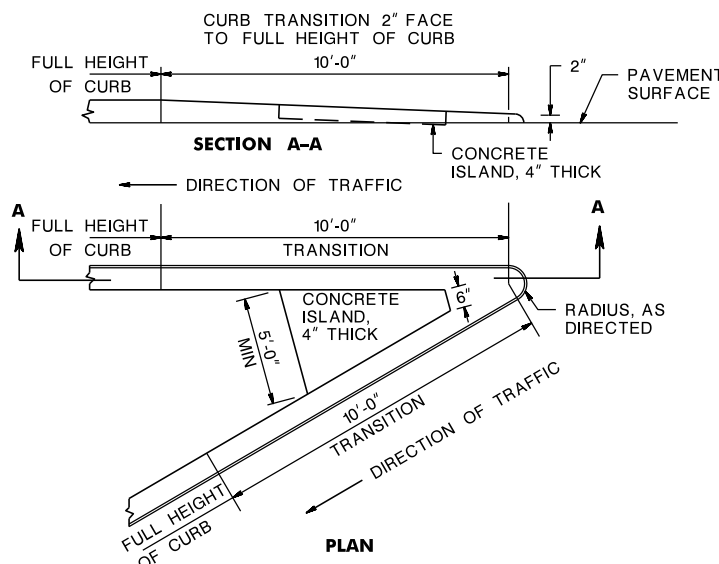
METHOD OF TRANSITIONING TO 2" VERTICAL CURB AT A TANGENT GUIDE RAIL TERMINAL

CD-607-2.1



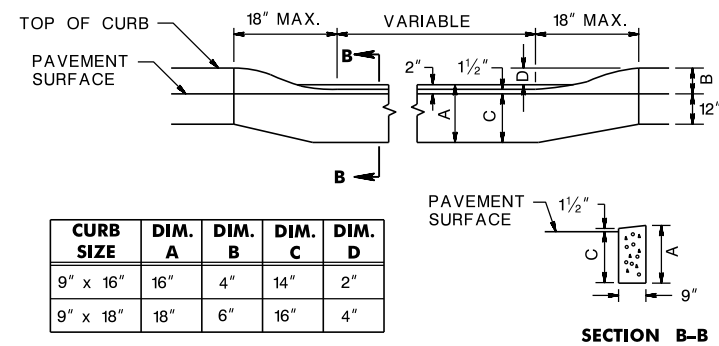
CURB TREATMENT AT BERM SECTION AND ALL CURB ENDS

CD-607-2.2



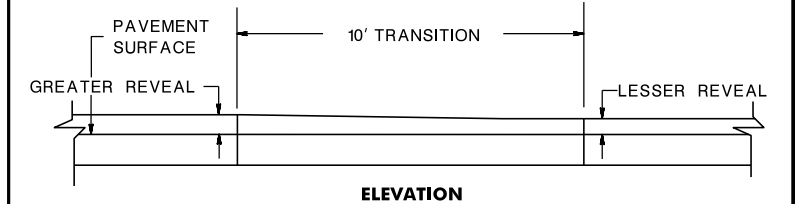
APPROACH CURBED GORE AREA TREATMENT

CD-607-2.3



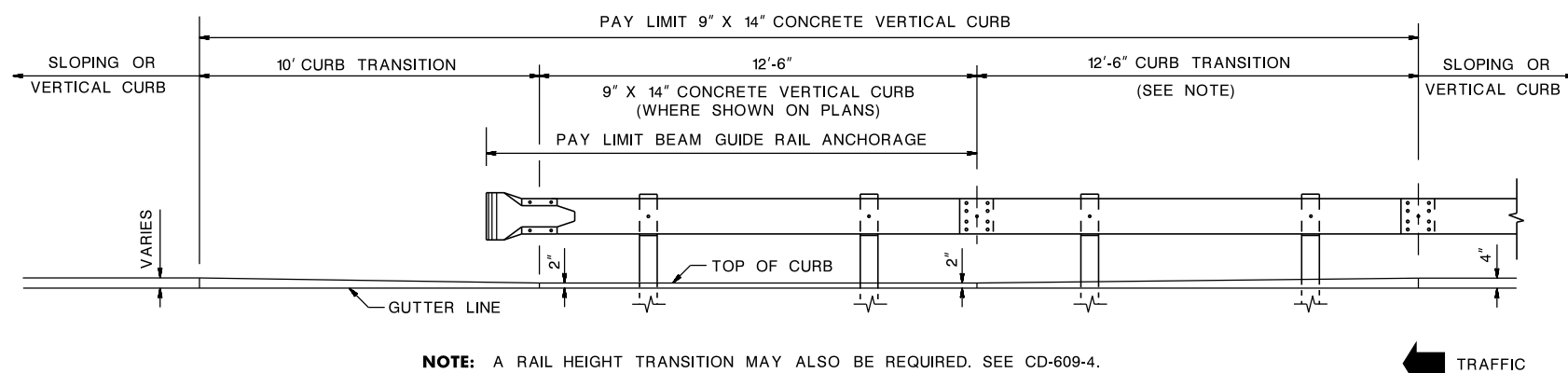
METHOD OF DEPRESSING CURB AT DRIVEWAYS

CD-607-2.4



LINEAR CURB TRANSITION

CD-607-2.5



NOTE: A RAIL HEIGHT TRANSITION MAY ALSO BE REQUIRED. SEE CD-609-4.

METHOD OF TRANSITIONING TO 2" VERTICAL CURB AT A BEAM GUIDE RAIL ANCHORAGE

CD-607-2.6

CURB TRANSITIONS

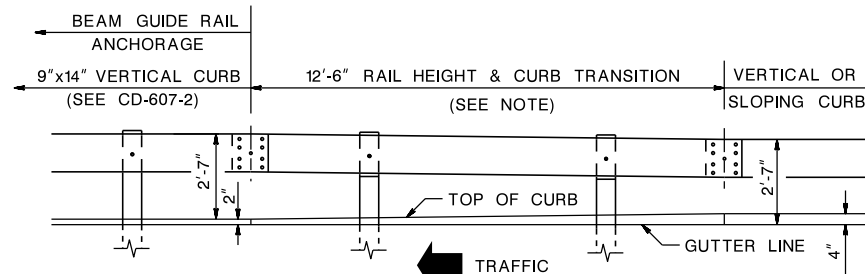
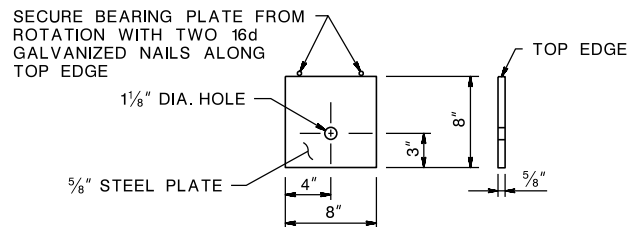
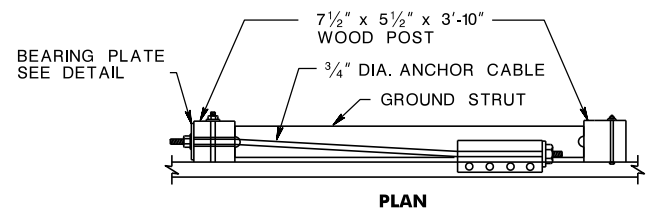
N.T.S.

CD-607-2

NEW JERSEY DEPARTMENT OF TRANSPORTATION

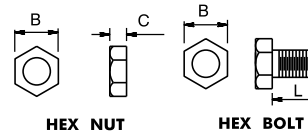
CONSTRUCTION DETAILS

BDC98-07-TRANSITION WITH GUIDE RAIL REVISED
 BDC17D-10-TRANSITION WITH GUIDE RAIL ADDED
 BDC17D-02-MASH TITLE ADDED
 BDC16D-01-ORIGINAL SHEET



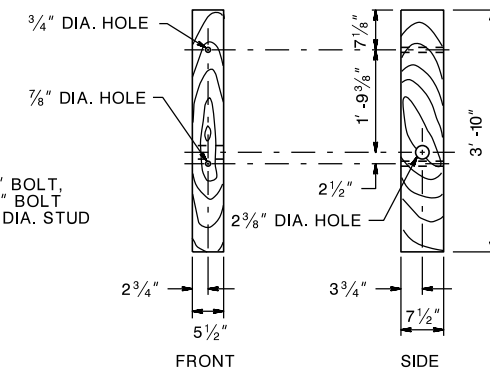
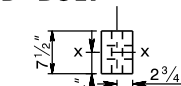
NOTE:
WHERE GUIDE RAIL IS OFFSET 4 FEET OR MORE FROM THE GUTTER LINE, RAIL HEIGHT IS MEASURED FROM THE GROUND LINE (CD-609-8A). A RAIL HEIGHT TRANSITION IS NOT REQUIRED.

RAIL HEIGHT TRANSITION FOR GUIDE RAIL ANCHORAGE WITH 2" VERTICAL CURB WHERE GUIDE RAIL IS OFFSET LESS THAN 4 FEET FROM THE GUTTER LINE

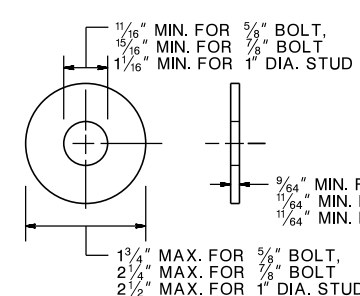


BOLT SIZE	THREAD PITCH	A	B	C	L
5/8"	5/8-11	5/8"	15/16"	35/64"	1 1/2", 10"
7/8"	7/8-9	7/8"	1 5/16"	3/4"	8"

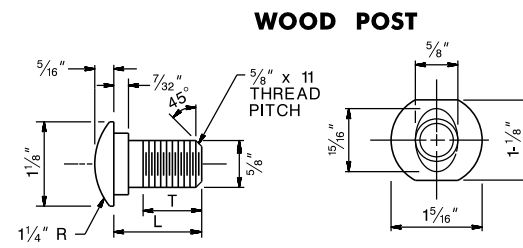
HEX NUT AND BOLT



STEEL WASHER

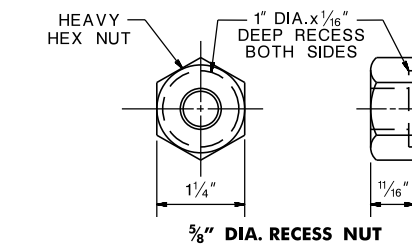


WOOD POST

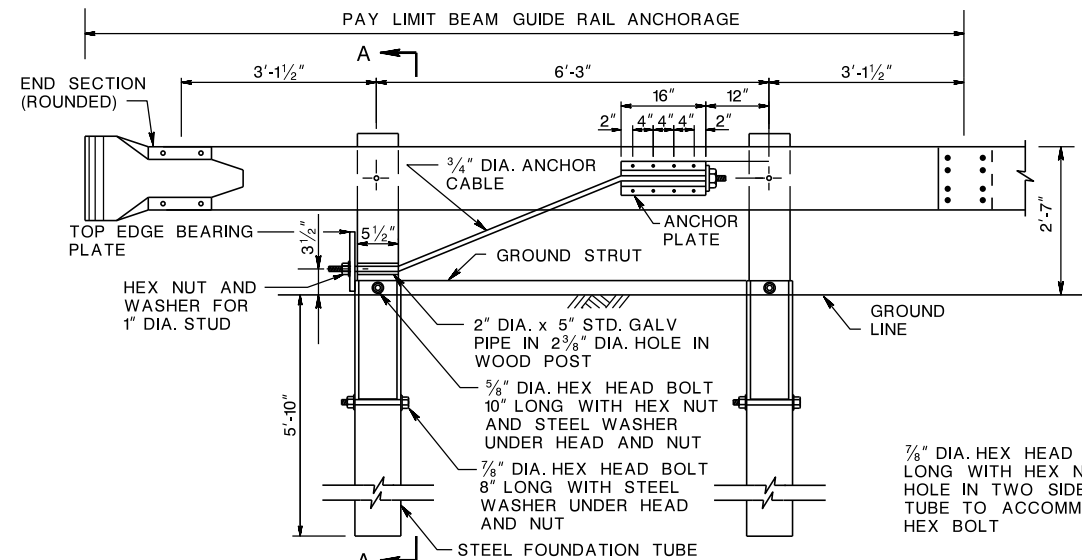


WOOD POST

TYPE	L	MIN. THREAD LENGTH (T)
RAIL	10"	4"
SPLICE	1 1/4"	FULL LENGTH THREAD

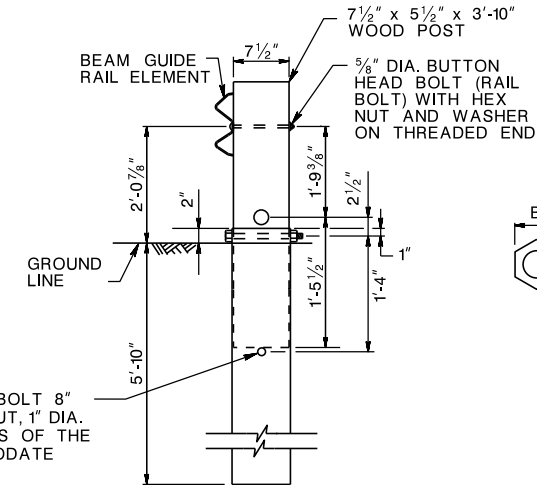


RAIL NUT & BOLT

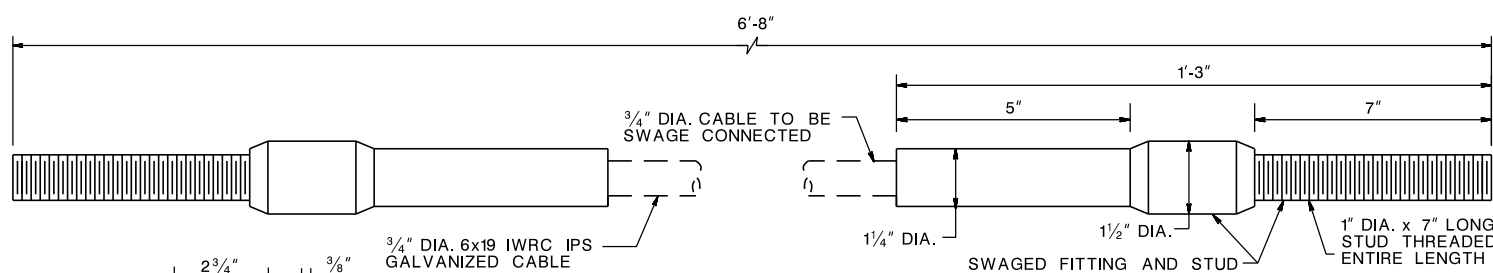


BEAM GUIDE RAIL ANCHORAGE

BEARING PLATE

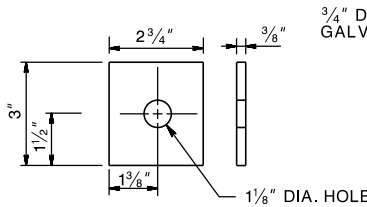


SECTION A-A

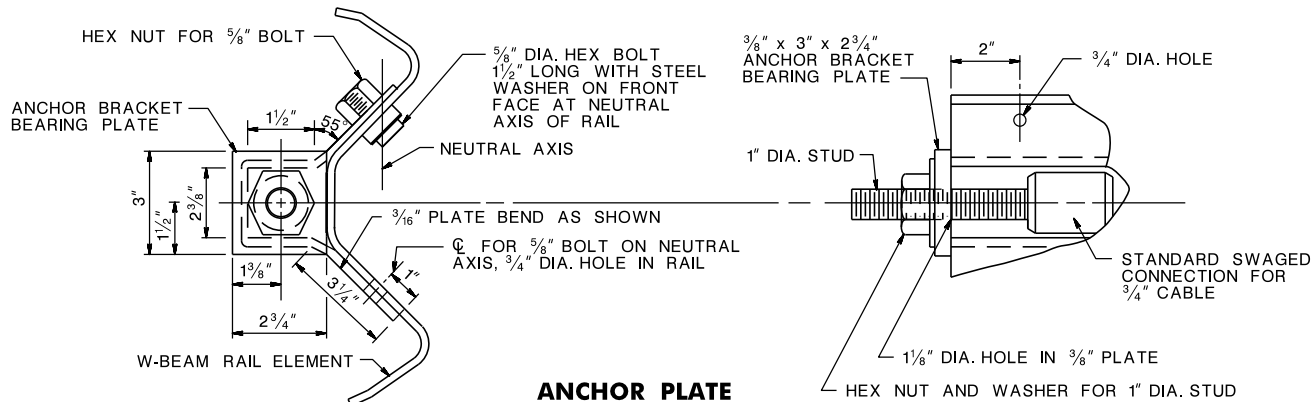


CABLE ASSEMBLY

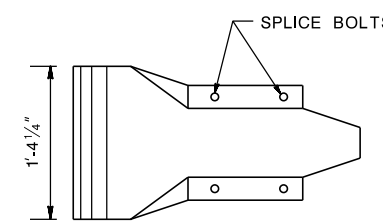
NOTE:
OTHER ANCHOR CABLE ASSEMBLIES MAY BE USED. MINIMUM BREAKING STRENGTH OF ASSEMBLY TO BE 42,700 LBS.



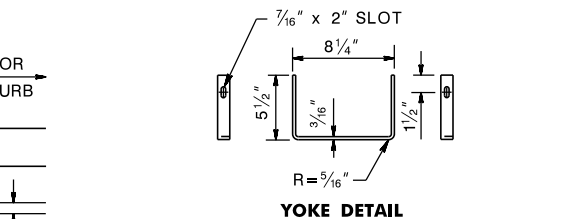
ANCHOR BRACKET BEARING PLATE



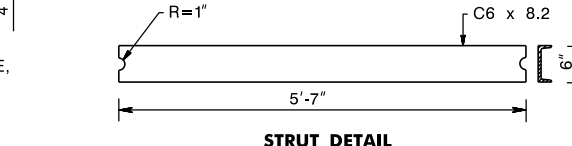
ANCHOR PLATE



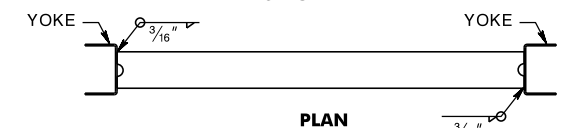
END SECTION (ROUNDED)



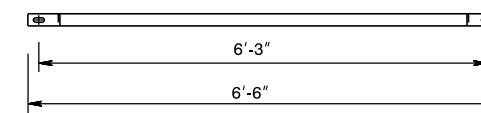
YOKE DETAIL



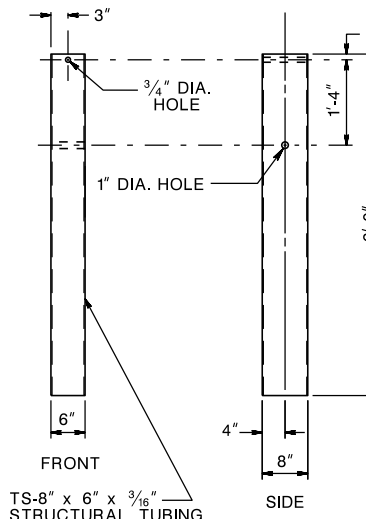
STRUT DETAIL



PLAN



ELEVATION GROUND STRUT



STEEL FOUNDATION TUBE

BEAM GUIDE RAIL ANCHORAGE (MASH TL-3)

N.T.S.

CD-609-4

NEW JERSEY DEPARTMENT OF TRANSPORTATION

CONSTRUCTION DETAILS

BDC618D-07-ANCHORAGE WITH CURB REVISED
 BDC618D-06-ANCHORAGE WITH CURB ADDED
 BDC618D-02-REVISIONS TO CD-609-4
 BDC618D-01-ORIGINAL SHEET

CD-609-4.1