

## **Wisconsin Barrier Design Summary**

### **Page 1:**

Design 1 – TL-4

42 in. high, 9 in. wide Concrete single faced F-shape barrier with 13 in. slab footing. Slab footing attaches to neighboring roadway or shoulder. Stirrups are continuous between slab and wall.

### **Page 2:**

Design 2 – TL-4

42 in. high, 9 in. wide Concrete single faced F-shape barrier with 24 in. square torsion footing. Torsion footing does not need to attach to neighboring roadways or shoulders.

### **Page 3:**

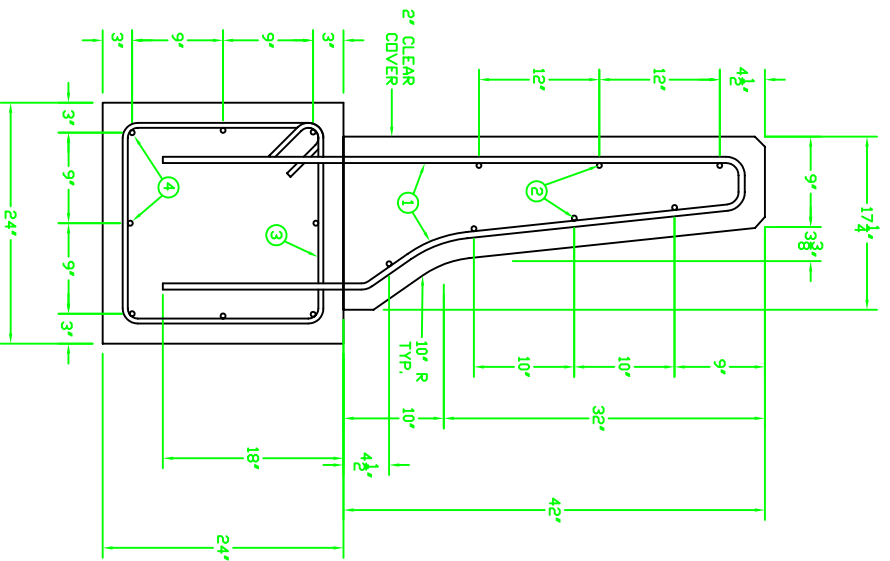
Design 3 – TL-3

42 in. high, 9 in. wide Concrete single faced F-shape barrier with 13 in. slab footing. Slab footing attaches to neighboring roadway or shoulder. Stirrups are not continuous between slab and wall allowing for easier slip forming in two phases.

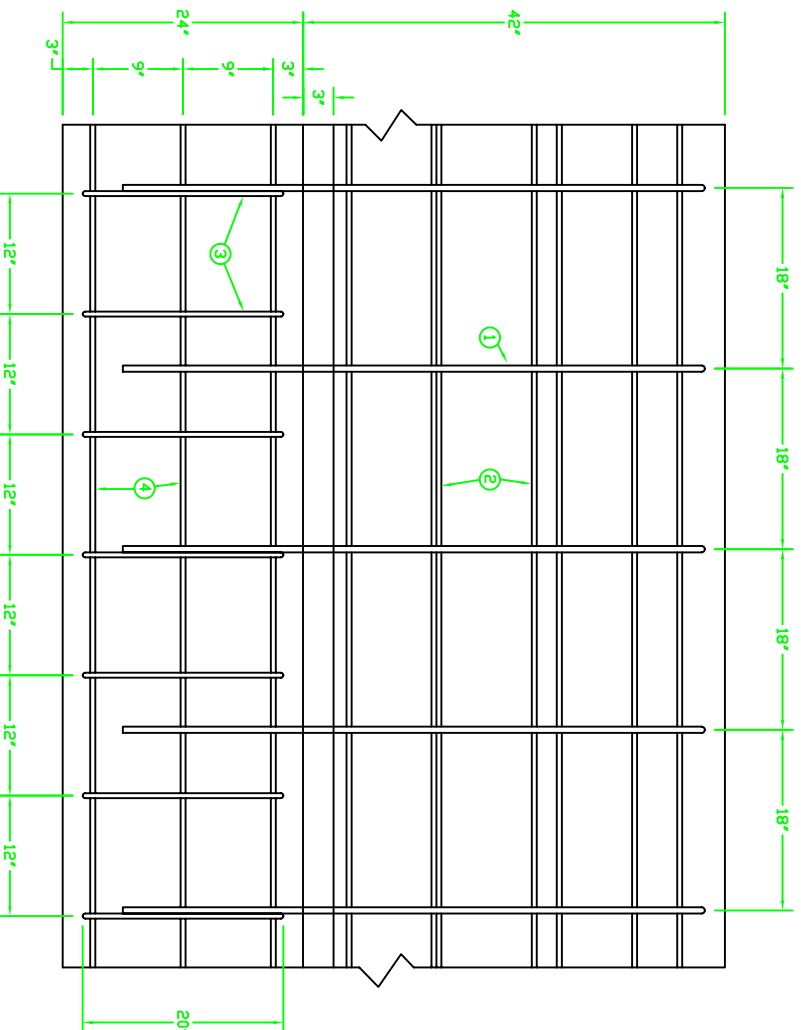
### **Page 4:**

Rebar and stirrup details for Design 3.





CROSS SECTION VIEW




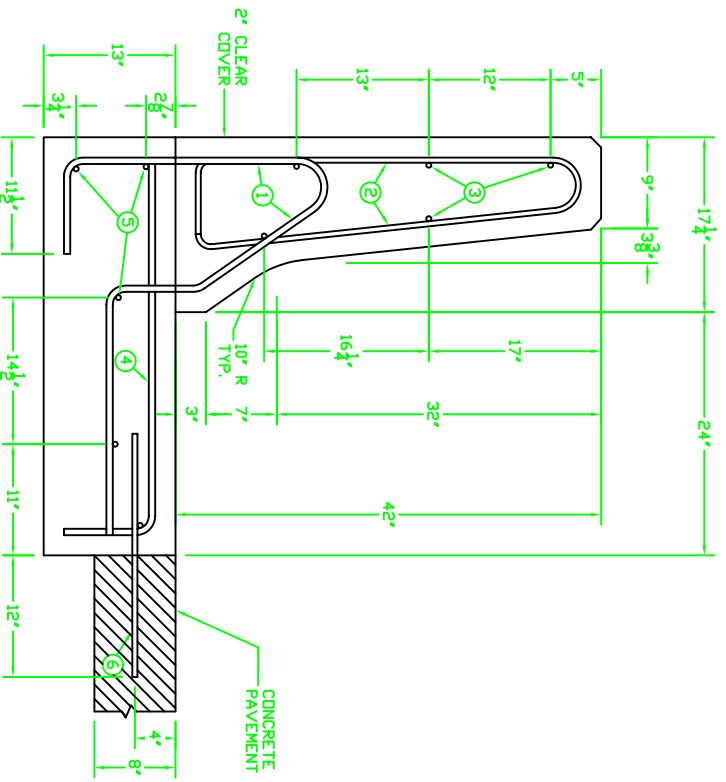
ELEVATION VIEW

DESIGN NOTES

- ① NO. 5 BARS SPACED AT 18" C-C
- ② 7 CONTINUOUS NO. 4 BARS IN BARRIER WALL. PLACED AS SHOWN
- ③ NO. 4 BARS SPACED AT 12" FOR TORSION IN FOOTER ADJACENT TO BARRIER STRIPS
- ④ 8 CONTINUOUS NO. 4 BARS IN FOOTER PLACED AT CORNERS AND MIDPOINTS OF TORSION STRIPS
- ⑤ 60 KSI STEEL STRENGTH
- ⑥ 4 KSI MINIMUM 28 DAY CONCRETE STRENGTH
- ⑦ 2" CLEAR COVER

\* FOR INTERIOR REGIONS ONLY  
 \*\* ADDITIONAL STRENGTH REQUIREMENTS NECESSARY  
 AT END LOCATIONS AND/OR AT JOINTS

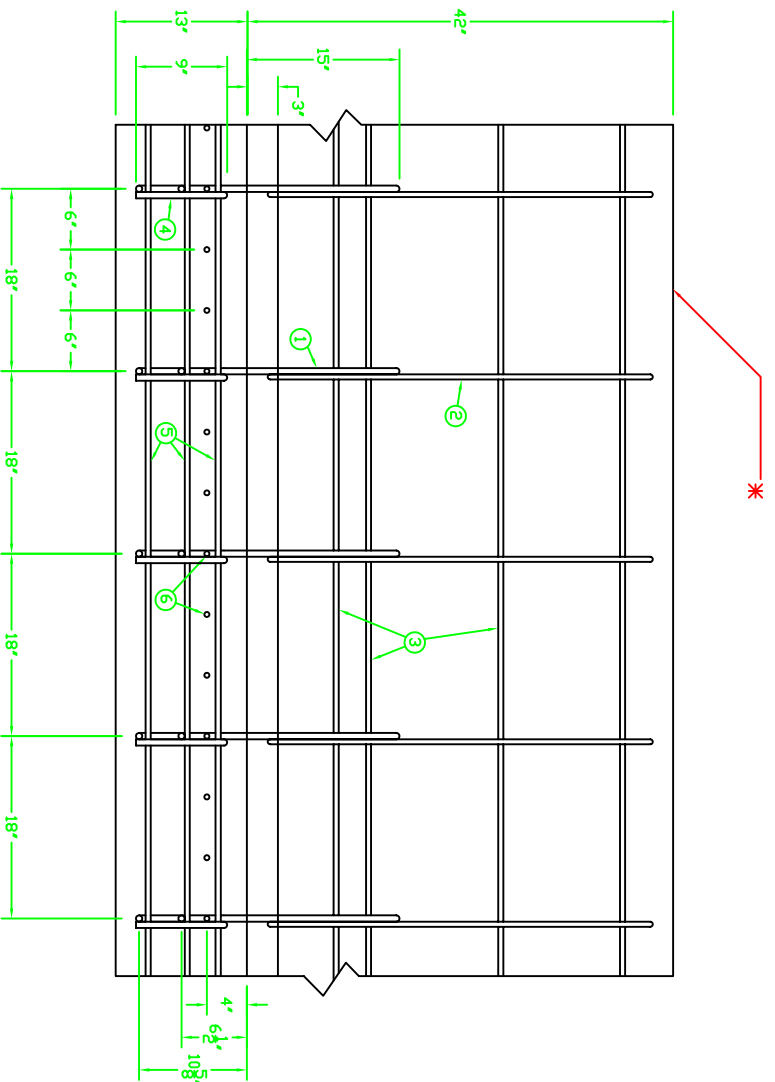
	<p style="text-align: center;"><b>CONCRETE MEDIAN BARRIER</b> SINGLE FACE 42" TL-4</p> <p style="text-align: center;">Barrier placed on 2' X 2' stand alone footer 8" width at top</p>	<p>Drawing Name: 42" MEDIAN BARRIER</p>	<p>Scale: None</p>	<p>Sheet: 1-1</p>
<p>Midwest Roadside Safety Facility</p>	<p>By: JAH / SKR</p>	<p>Date: 7-1-05</p>	<p>Rev:</p>	<p>Rev:</p>



CROSS SECTION VIEW


DESIGN NOTES

- ① NO. 5 STIRRUPS SPACED AT 18" C-C
- ② NO. 4 STIRRUPS SPACED AT 18" C-C PLACED ADJACENT TO NO. 5 STIRRUPS
- ③ 5 CONTINUOUS NO. 4 BARS. PLACED AS SHOWN
- ④ NO. 5 BARS SPACED AT 18" PLACED ADJACENT TO STIRRUPS
- ⑤ 5 CONTINUOUS NO. 4 BARS. PLACED AS SHOWN FOR TEMPERATURE AND SHRINKAGE REINFORCEMENT
- ⑥ NO. 4 TIE BARS. 24" IN LENGTH. SPACED AT 6" C-C
- ⑦ 60 KSI STEEL STRENGTH
- ⑧ 4 KSI MINIMUM 28 DAY CONCRETE STRENGTH
- ⑨ 2" MINIMUM CLEAR COVER FOR ALL BARS

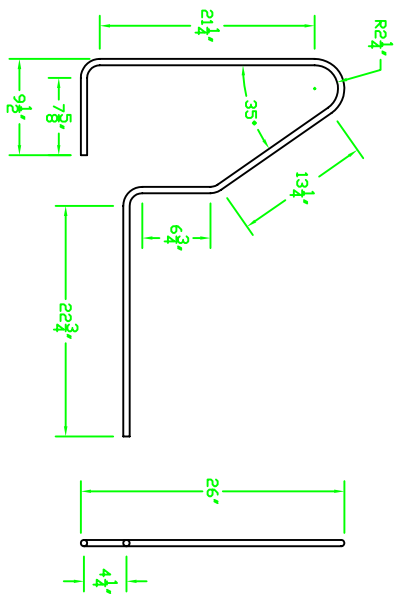


ELEVATION VIEW

\* FOR INTERIOR REGIONS ONLY  
 \*\* ADDITIONAL STRENGTH REQUIREMENTS NECESSARY  
 AT END LOCATIONS AND/OR AT JOINTS

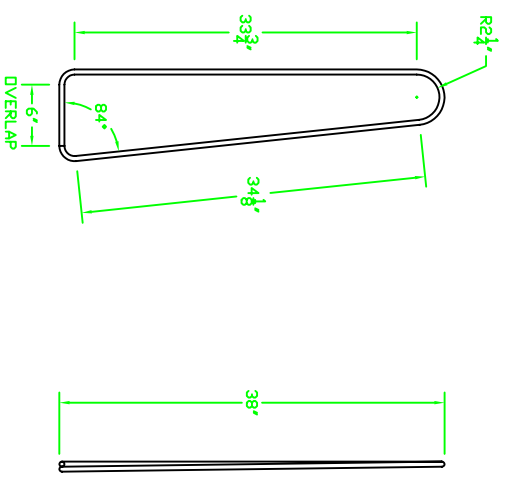
	<p style="text-align: center;"><b>CONCRETE MEDIAN BARRIER SINGLE FACE 42" TL-3</b></p> <p style="text-align: center;">Barrier placed adjacent to concrete slab and connected by #4 bars at 6" spacing</p>	<p>Sheet: 1-2</p> <p>Date: 7-26-05</p> <p>By: JAH / SKR</p>
<p><b>Midwest Roadside Safety Facility</b></p>	<p>Drawing Name: 42" MEDIAN BARRIER</p> <p>Scale: None</p>	<p>Rev:</p>

1



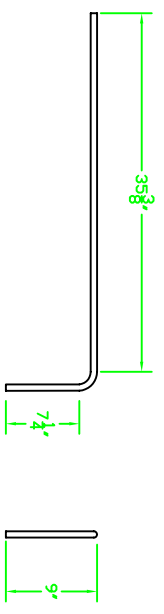
-NO. 5 BAR FOR USE IN FOOTER AND AS BARRIER ANCHOR  
 -RADIUS DIMENSIONS MEASURED TO INSIDE OF BAR  
 -RADIUS OF BEND IS 1.25" UNLESS OTHERWISE NOTED

2

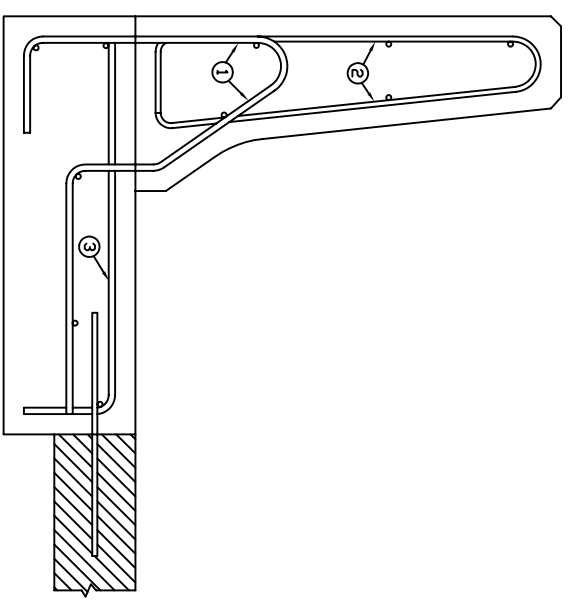



-NO. 4 BAR FOR USE AS STIRRUP IN BARRIER  
 -RADIUS DIMENSIONS MEASURED TO INSIDE OF BAR  
 -RADIUS OF BEND IS 1.0" UNLESS OTHERWISE NOTED

3



-NO. 5 BAR LOCATED IN FOOTER  
 -RADIUS OF BEND IS 1.25"



		<b>CONCRETE MEDIAN BARRIER</b> <b>SINGLE FACE 42"</b> <b>TL-3</b>		Sheet: 2-2
		<b>Rebar Details and Dimensions</b> Interior Section		Date: 7-26-05
<b>Midwest Roadside</b> <b>Safety Facility</b>		Drawing Name: 42" MEDIAN BARRIER	Scale: None	By: JAH / SKR
				Rev: