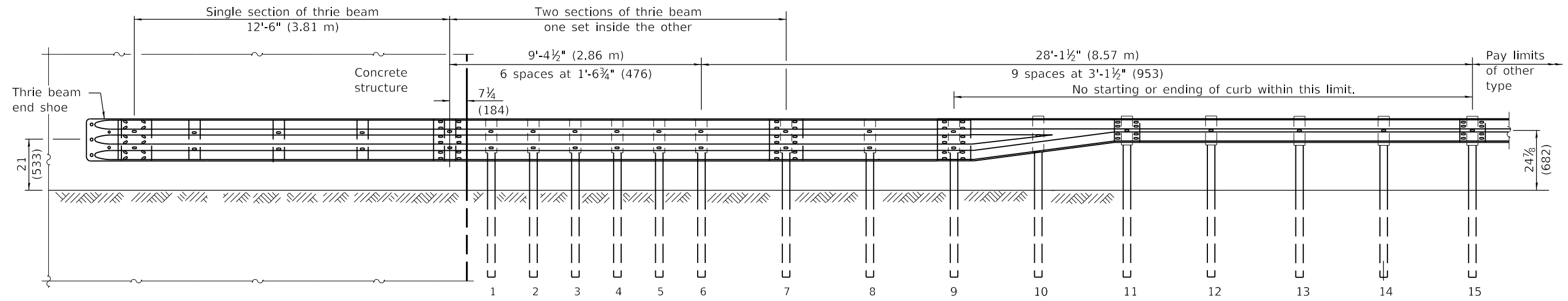
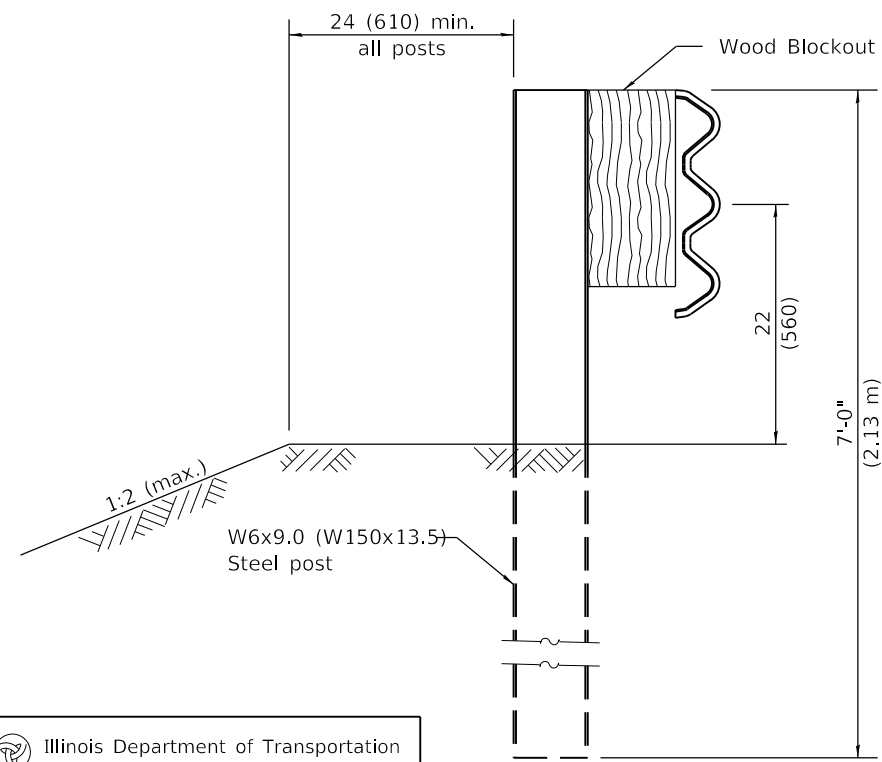


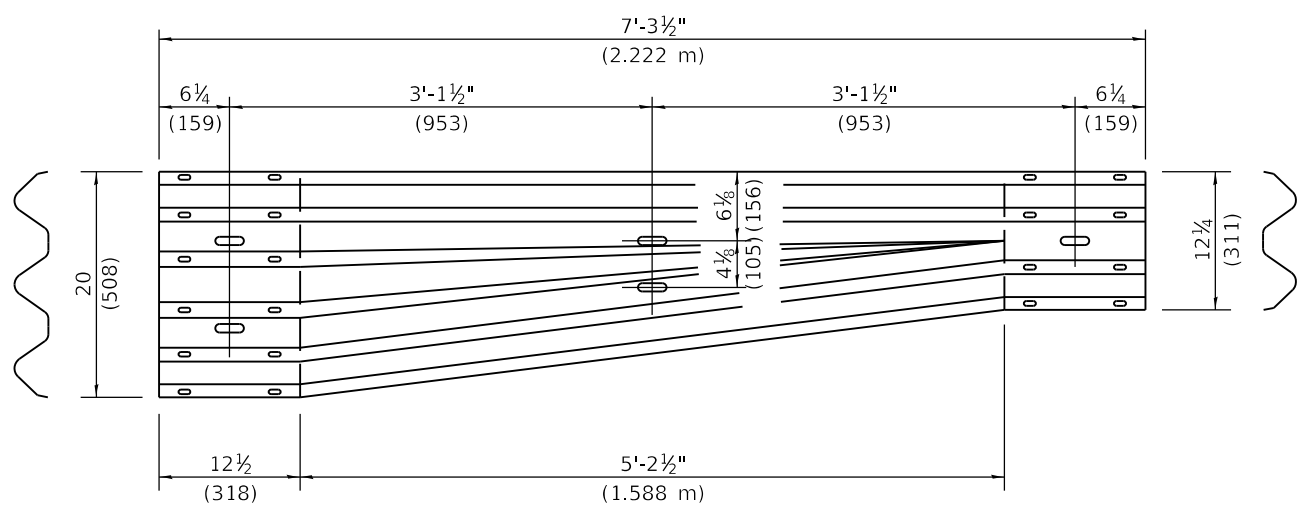
\* With standard washers. After tightening, cut the anchor bolts flush with the nuts and damage the nuts to prevent them from loosening.



**ELEVATION**



**SECTION A-A**



**TRANSITION SECTION**  
(10 gauge (3.4) rail element)

**GENERAL NOTES**

- See Standard 630001 for details of guardrail not shown.
- Thrie beam rail shall be bolted to block-out at all posts.
- All slope ratios are expressed as units of vertical displacement to units of horizontal displacement (V:H).
- All dimensions are in inches (millimeters) unless otherwise shown.

DATE	REVISIONS
1-1-17	Revised length of thrie beam. Revised length of posts.
1-1-15	Revised notes for attachment to concrete structure.

**TRAFFIC BARRIER TERMINAL, TYPE 6B**

(Sheet 1 of 2)

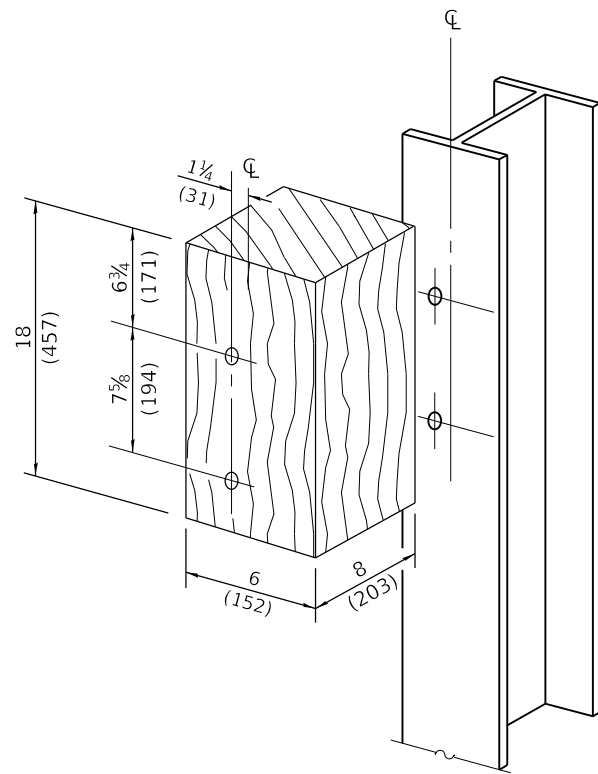
**STANDARD 631033-07**

Illinois Department of Transportation

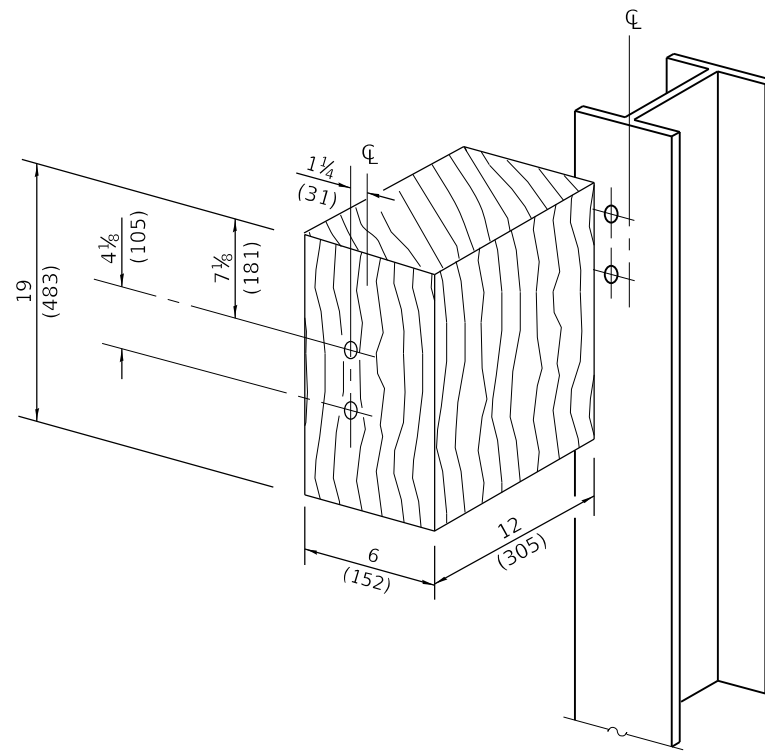
PASSED January 1, 2017  
*Michael Beard*  
 ENGINEER OF POLICY AND PROCEDURES

APPROVED January 1, 2017  
*Marcus M. Adams*  
 ENGINEER OF DESIGN AND ENVIRONMENT

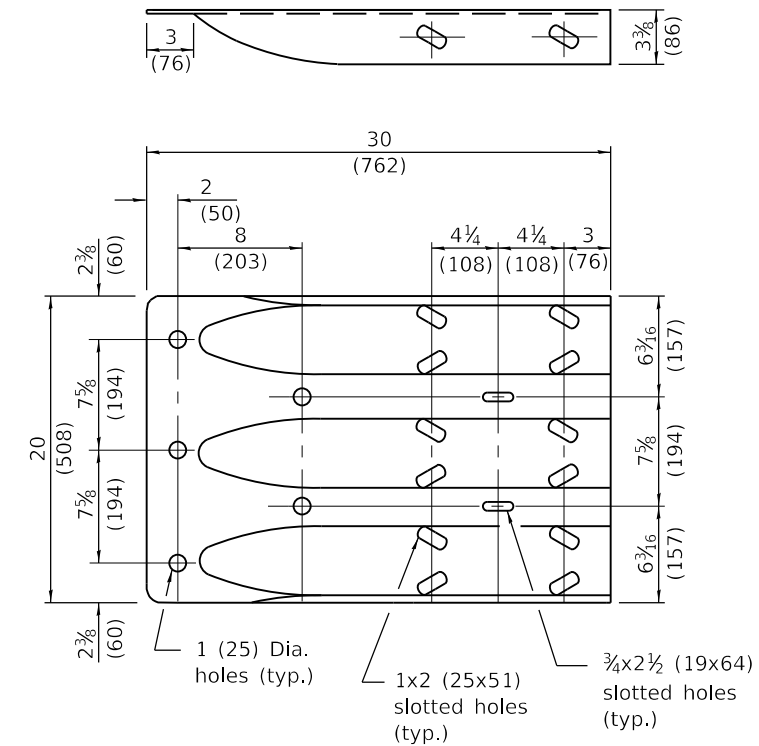
ISSUED 1-1-2003



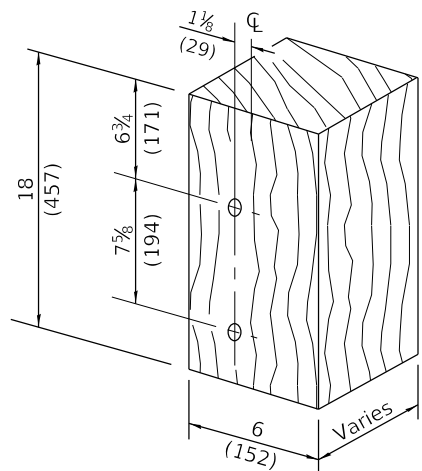
**POSTS 1-9 WOOD BLOCKOUT DETAIL**



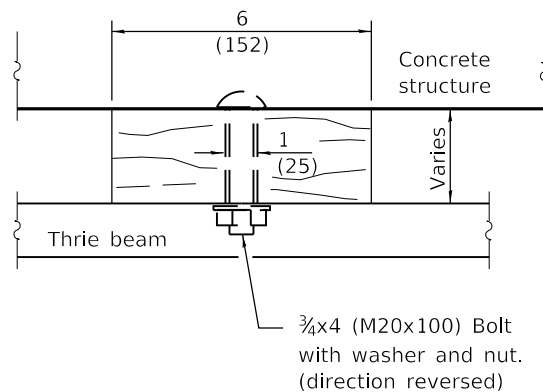
**POST 10 WOOD BLOCKOUT DETAIL**  
(See Standard 630001 for post 11-15 blockouts.)



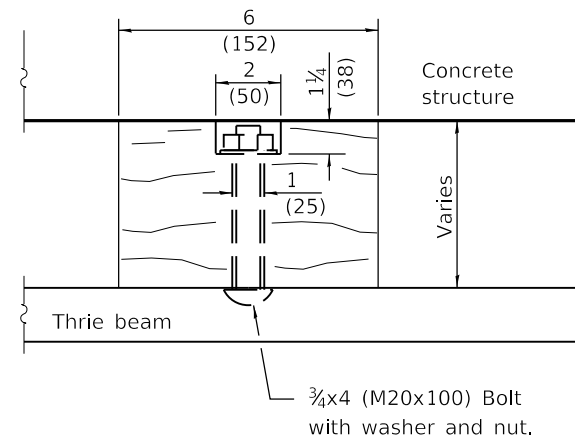
**THRIE BEAM END SHOE DETAIL**



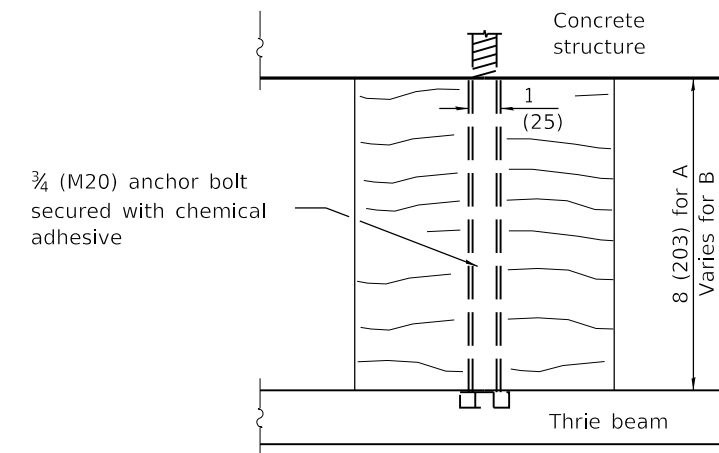
**MODIFIED THICKNESS DETAIL**  
**WOOD BLOCKOUTS A, B, C, & D**



**WOOD BLOCKOUT D**



**WOOD BLOCKOUT C**



**WOOD BLOCKOUT A & B**