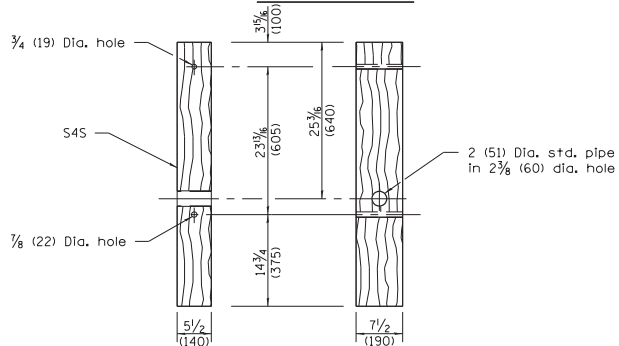


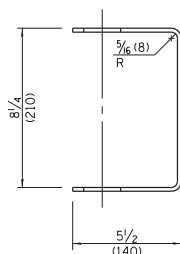
BEARING PLATE K



FRONT

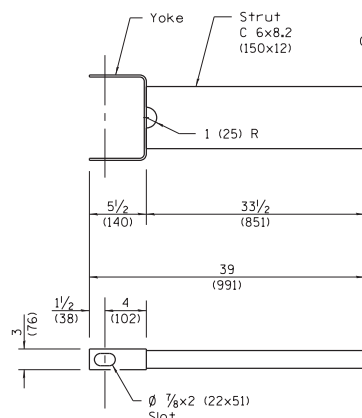
SIDE

WOOD POST



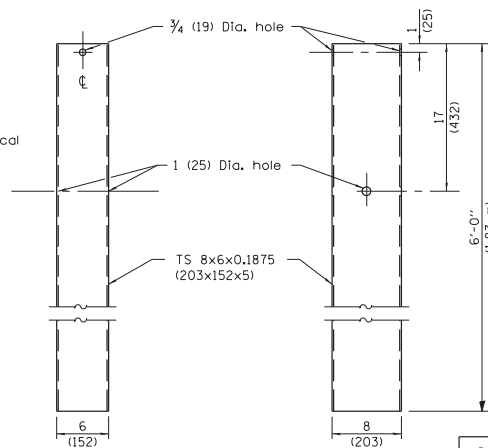
YOE

3/8 (5) thick steel



CABLE STRUT

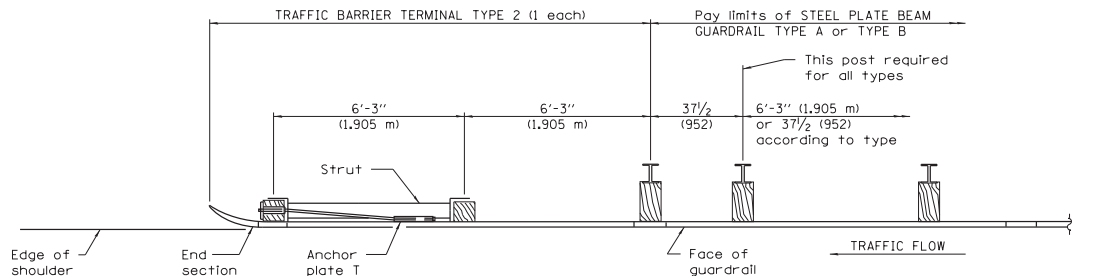
℄ & Symmetrical



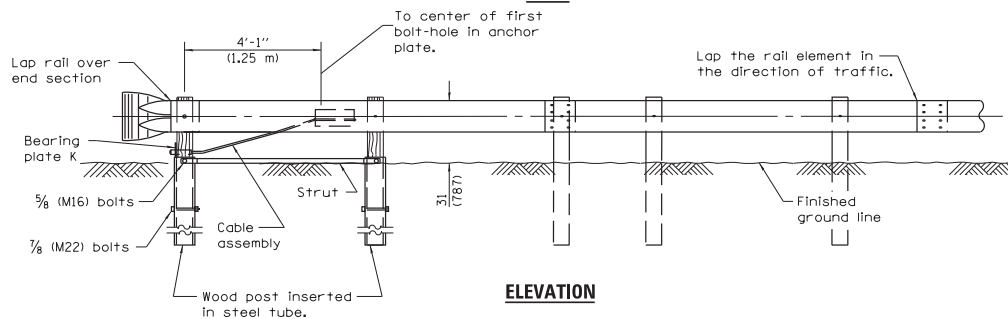
FRONT

SIDE

STEEL TUBE



PLAN



ELEVATION

GENERAL NOTES

See Standard 630001 for details of guardrail not shown.

The bearing plate K shall be held in position by two eight penny nails driven into the post and bent over the top of the plate.

All dimensions are in inches (millimeters) unless otherwise shown.

DATE	REVISIONS
1-1-13	Corrected metric dimension for BEARING PLATE K. Changed pipe dia. in wood post.
1-1-12	Revised dimensions for post, bearing plate, cable strut, tube and cable connection.

**TRAFFIC BARRIER
TERMINAL, TYPE 2**

STANDARD 631011-09

Illinois Department of Transportation

PASSED January 1, 2013

ENGINEER OF POLICY AND PROCEDURES

APPROVED January 1, 2013

ENGINEER OF DESIGN AND ENVIRONMENT

ISSUED 46-1-1