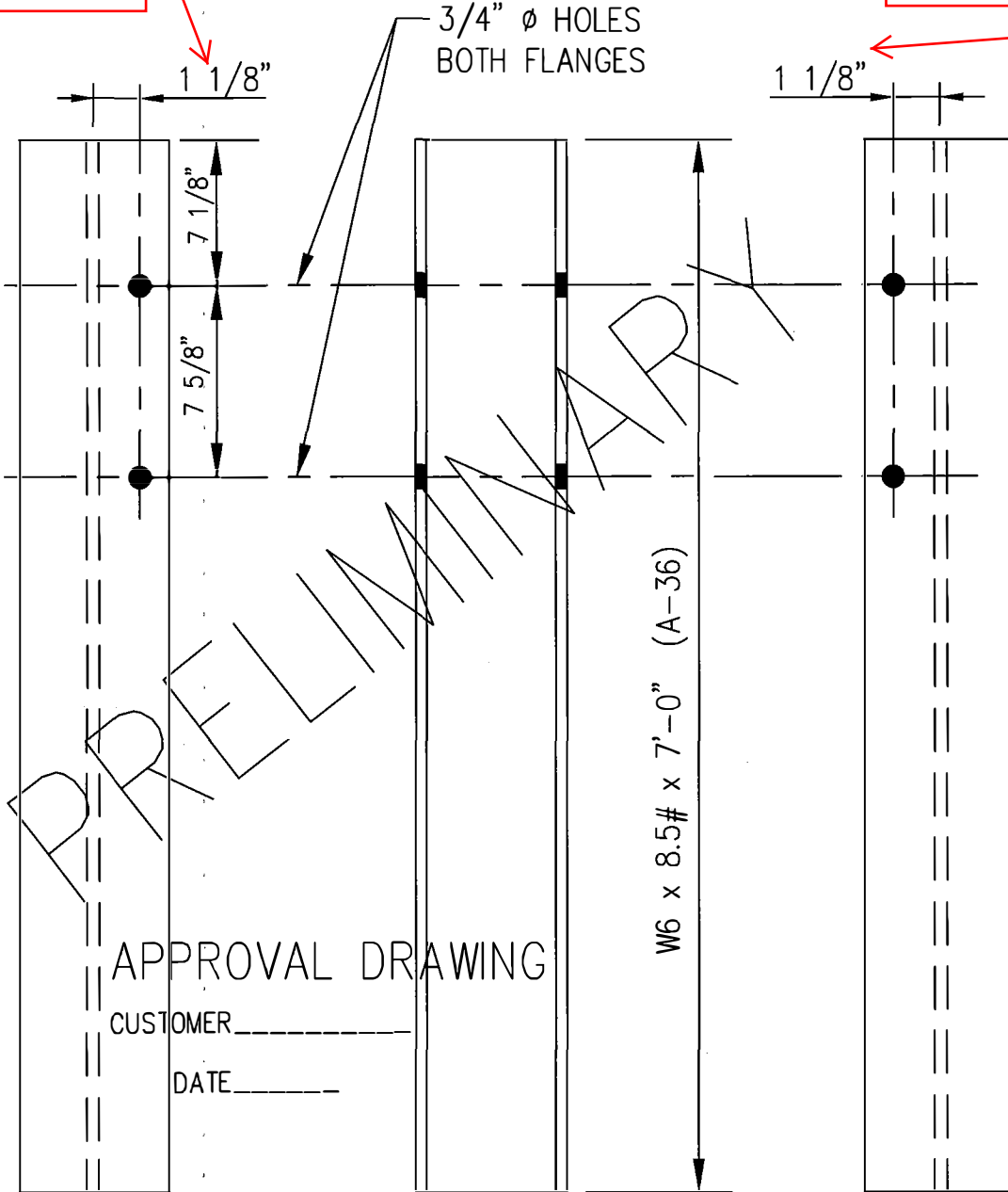


3/32" Difference

3/32" Difference



FRONT VIEW

SIDE VIEW

BACK VIEW

REF. WISCONSIN STATE ST'D DWG S.D.D.14 B 45-4c

MATERIAL:	A-36
FINISH:	A-123
ESTIMATED WEIGHT:	63#

NOTES:

1. FINISH AND GENERAL WORKMANSHIP PER CEMC-THP-SF-004, UNLESS OTHERWISE SPECIFIED.

DRAWN:	CC	DATE:	6/02/16
CHECKED:	BT	DATE:	6/02/16

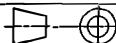
TOLERANCES PER CEMC-THP-SF-001, UNLESS OTHERWISE SPECIFIED.

UNLESS OTHERWISE NOTED, ALL DIMENSIONS ARE IN INCHES. DIMENSIONS ACCORDING TO ASME Y14.5M-1994 UNLESS OTHERWISE SPECIFIED.

DO NOT SCALE DRAWING

Revision	ECO	Date	Rev	By	Chk.

7'-0" POST/W6 x 8.5#



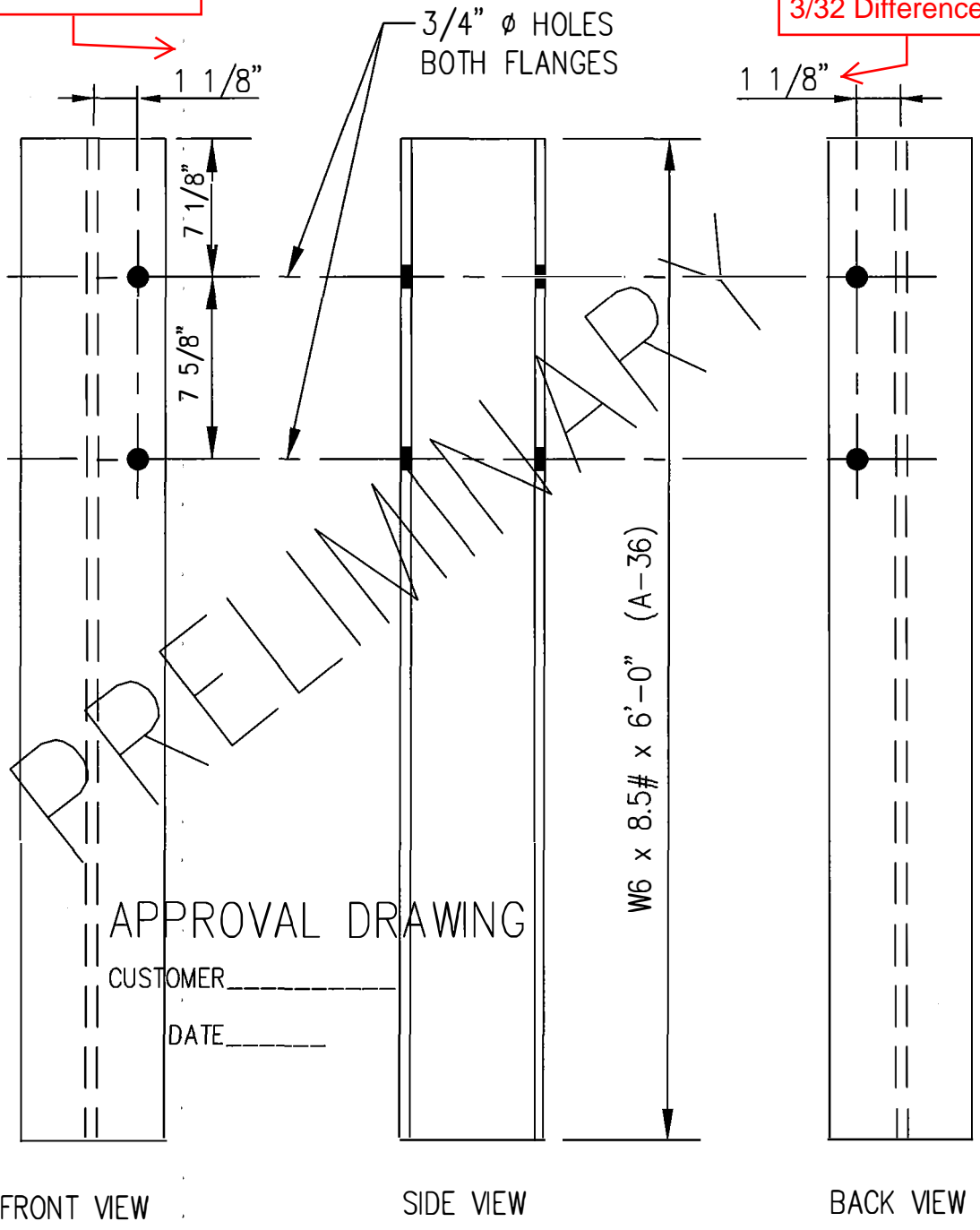
DRAWING: XXXX1

REV: 0

SHEET: 1 of 1

3/32" Difference

3/32" Difference



REF. WISCONSIN STATE ST'D DWG S.D.D.14 B 45-4c

MATERIAL:	A-36				
FINISH:	A-123				
ESTIMATED WEIGHT:	54#				
DRAWN:	CC				
CHECKED:	BT				
DATE:	6/02/16				
DATE:	6/02/16				
UNLESS OTHERWISE NOTED, ALL DIMENSIONS ARE IN INCHES. DIMENSIONS ACCORDING TO ASME Y14.5M-1994 UNLESS OTHERWISE SPECIFIED.					
Revision	ECO	Date	Rev	By	Chk.

NOTES:

1. FINISH AND GENERAL WORKMANSHIP PER CEMC-THP-SF-004, UNLESS OTHERWISE SPECIFIED.

TOLERANCES PER CEMC-THP-SF-001, UNLESS OTHERWISE SPECIFIED.

DO NOT SCALE DRAWING

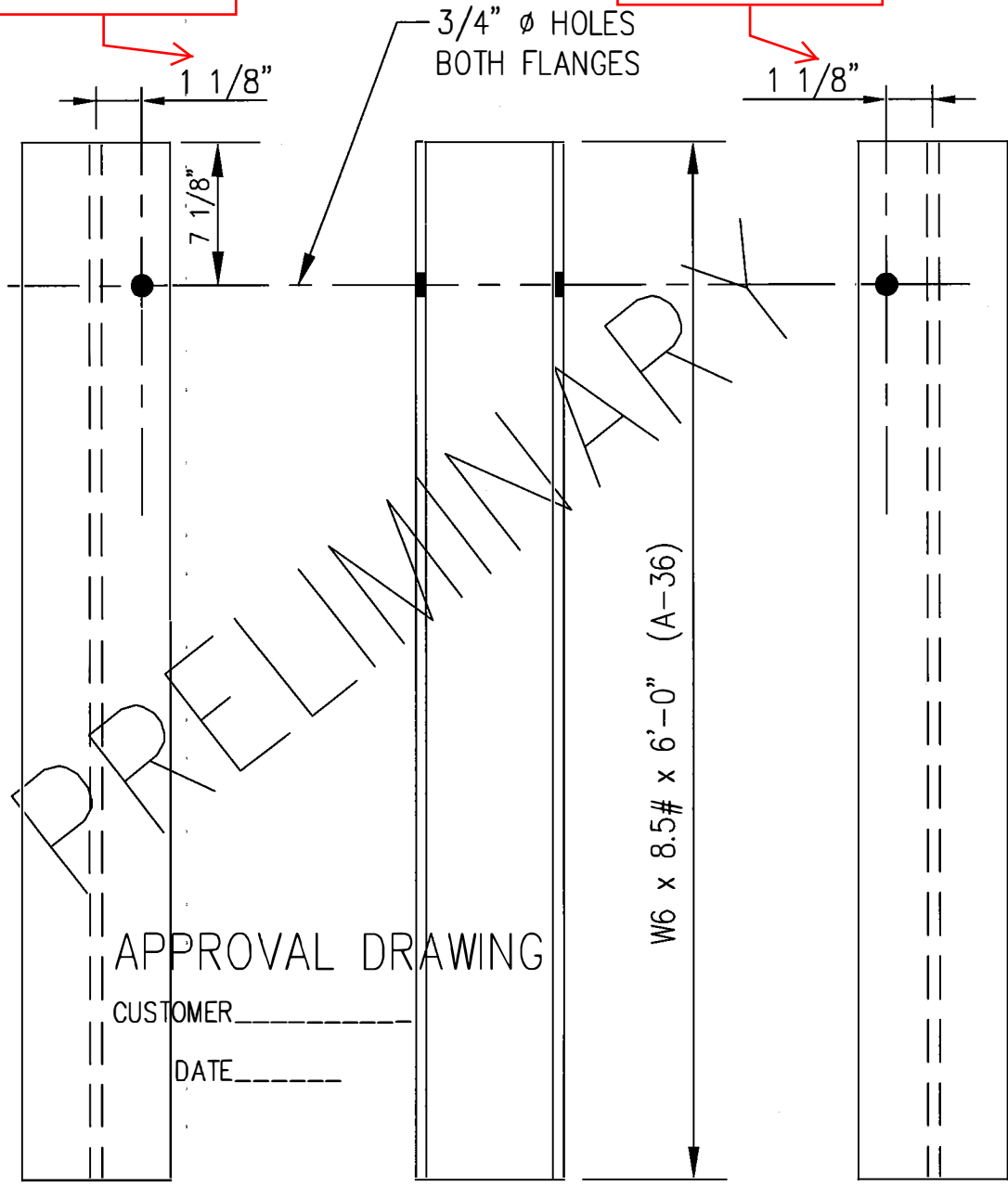
6'-0" POST/W6 x 8.5#

DRAWING: XXXX2 REV: 0 SHEET: 1 of 1



3/32" Difference

3/32" Difference



FRONT VIEW

SIDE VIEW

BACK VIEW

REF. WISCONSIN STATE ST'D DWG S.D.D. 14 B 45-4c

MATERIAL:	A-36
FINISH:	A-123
ESTIMATED WEIGHT:.	54#

NOTES:

1. FINISH AND GENERAL WORKMANSHIP PER CEMC-THP-SF-004, UNLESS OTHERWISE SPECIFIED.

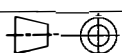
DRAWN:	DATE:
CC	6/02/16
CHECKED:	DATE:
BT	6/02/16

TOLERANCES PER CEMC-THP-SF-001, UNLESS OTHERWISE SPECIFIED.

DO NOT SCALE DRAWING

UNLESS OTHERWISE NOTED, ALL DIMENSIONS ARE IN INCHES.					
DIMENSIONS ACCORDING TO ASME Y14.5M-1994 UNLESS OTHERWISE SPECIFIED.					
Revision	ECO	Date	Rev	By	Chk.

6'-0" POST/W6 x 8.5#



DRAWING:	XXXX3	REV:	0	SHEET:	1 of 1
----------	-------	------	---	--------	--------