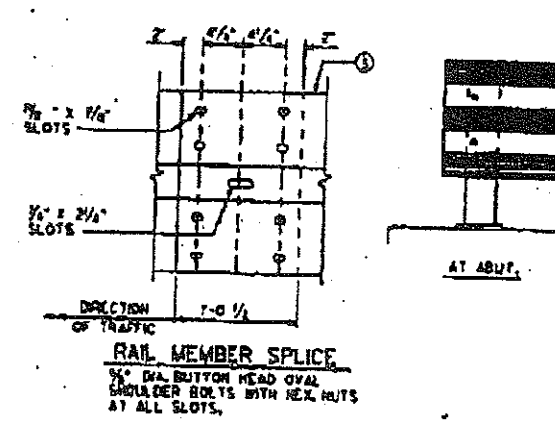
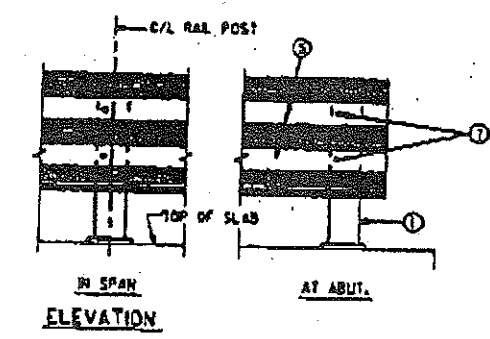


SECTION THRU RAILING

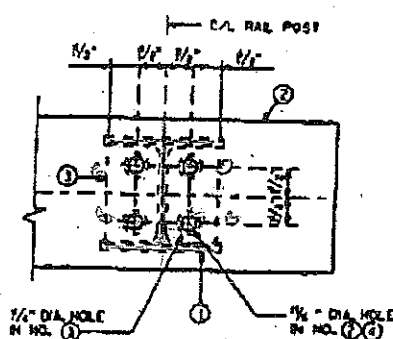


STRUCTURE NUMBER	EXISTING POSTS EACH		RAIL MEMBER L IN. FT.	
	LT	RT	LT	RT
B-3-69	9	9	52.0	50.0
B-3-70	14	14	80.0	80.0

QUANTITIES ARE SHOWN FOR INFORMATIONAL PURPOSE ONLY



ELEVATION



CHANNEL MEMBER DETAIL

LEGEND

- ① EXISTING W&ZS, DRILL 2 - 1/2" DIA. HOLES FOR BOLT NO.7
- ② EXISTING CBXLS, WITH 1/2" DIA. HOLES, ATTACH TO NO.4 WITH BOLTS NO.8
- ③ EXISTING PLATE 1/2" X 5 1/2" X 6", WITH 1/2" DIA. HOLE FOR BOLTS NO.8
- ④ STRUCTURAL TUBE 6" X 4" X 3/8", WITH 1/2" DIA. HOLES, 6" LONG, ATTACH TO NO.3 WITH BOLTS NO.8
- ⑤ NEW R-RAIL, ATTACH TO NO.4 WITH BOLTS NO.7
- ⑥ 1 1/2" X 3" MOUNTING BOLT WASHER, EIGHT GAGE GALVANIZED.
- ⑦ 1/2" DIA. BUTTON HEAD RAIL MOUNTING BOLT WITH ROUND WASHER AND NUT, 2 PER POST.
- ⑧ 1/2" DIA. X 2" LG. HEX. BOLTS WITH NUT AND TWO WASHERS EACH, 4 REED. PER POST CONNECTION

GENERAL NOTES

BID ITEM SHALL BE "STEEL RAILING TYPE 'W' REHABILITATION" WHICH SHALL INCLUDE ALL MATERIALS AND LABOR NECESSARY TO RAISE ITEMS NO. 2 & NO. 5 BETWEEN THE LENGTH LIMITS OF RAILING AS SHOWN IN ELEVATION AND SHALL BE PAID FOR AS A LUMP SUM ITEM. ALL MATERIALS USED IN FABRICATION SHALL BE MADE FROM MATERIALS CONFORMING TO A.S.T.M. DESIGNATION A709 GRADE 36 UNLESS NOTED OTHERWISE.

SHIM PLATES 5" X 1/2" X 6" MAY BE USED BETWEEN TOP OF POST AND CHANNEL MEMBER TO ACHIEVE VERTICAL ALIGNMENT.

ALL MATERIAL SHALL BE GALVANIZED AFTER FABRICATION. PRIOR TO GALVANIZING, ALL STEEL STRUCTURAL TUBE SHALL BE GIVEN A NO. 6 BLAST CLEANING BY S.S.P.C. SPECIFICATIONS.

RAIL MEMBERS SHALL BE LAPPED IN THE DIRECTION OF TRAFFIC AND THE UPPER RAIL SHALL LAP THE LOWER RAIL.

NEW BOLTS AND REFLECTORS SHALL BE FURNISHED AND USED TO RESET THE STRUCTURAL TUBES AND W-RAIL.

BID ITEMS

Steel Railing Type "W" Rehabilitation	B-3-69	LS	1
Steel Railing Type "W" Rehabilitation	B-3-70	LS	1