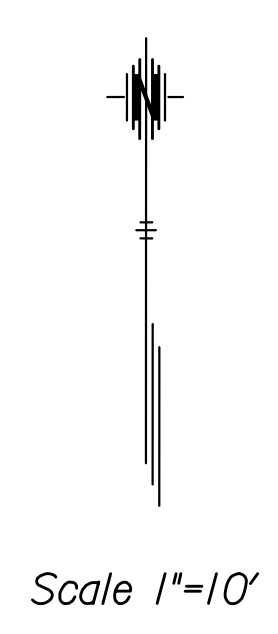
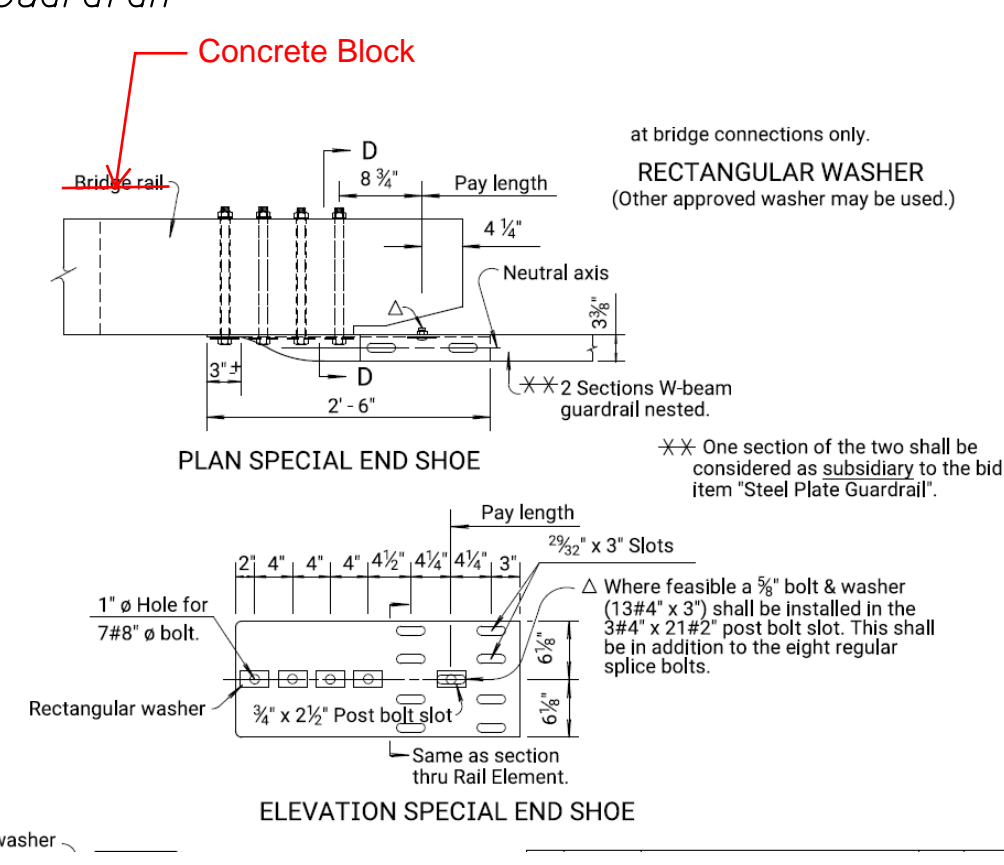
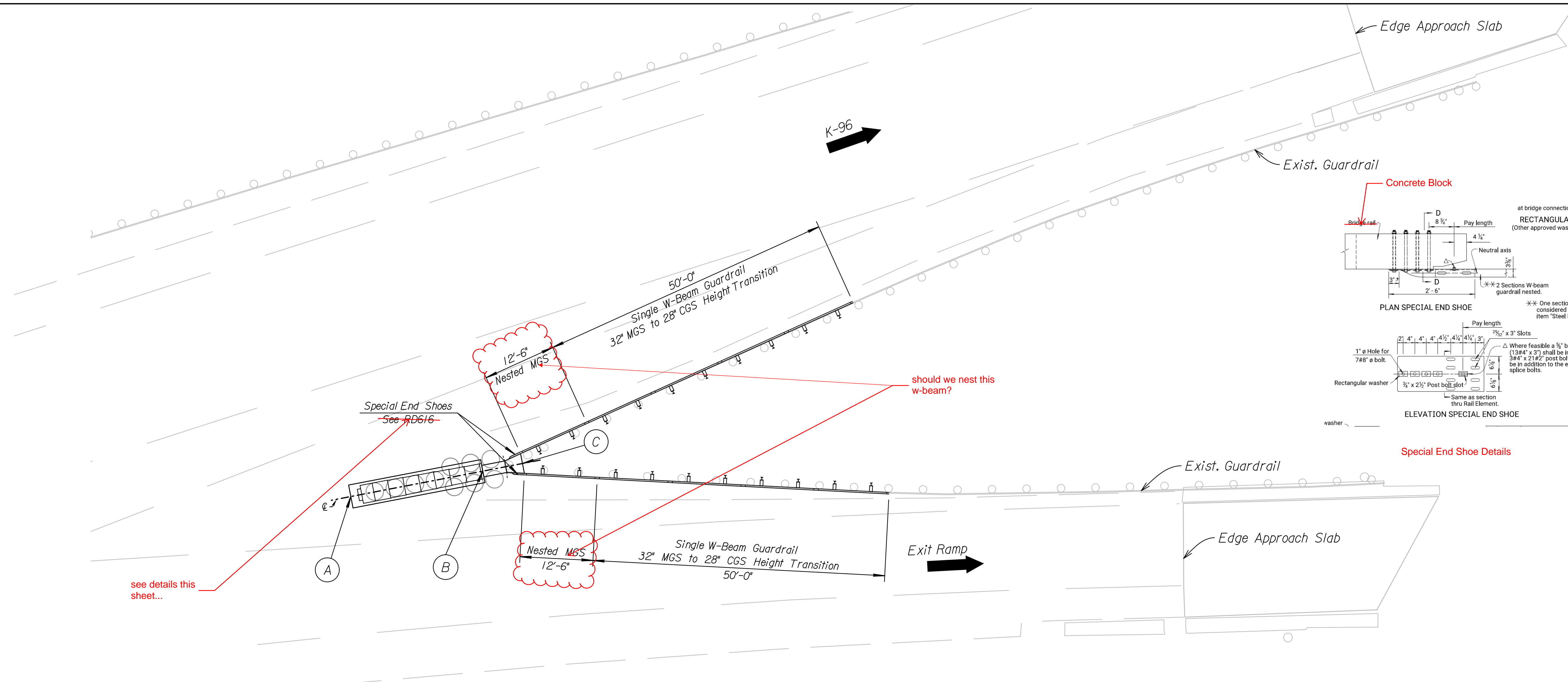


STATE	PROJECT NO.	YEAR	SHEET NO.	TOTAL SHEETS
KANSAS	96-87 KA-4685-01	2018		

DATE	
BY	
REFERENCES NOTED	
REFERENCES CHECKED	



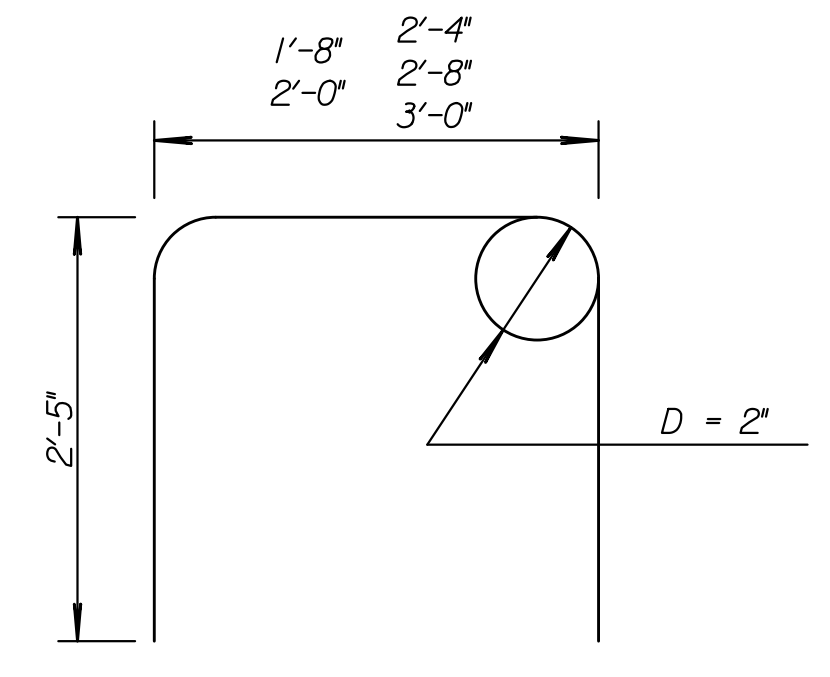
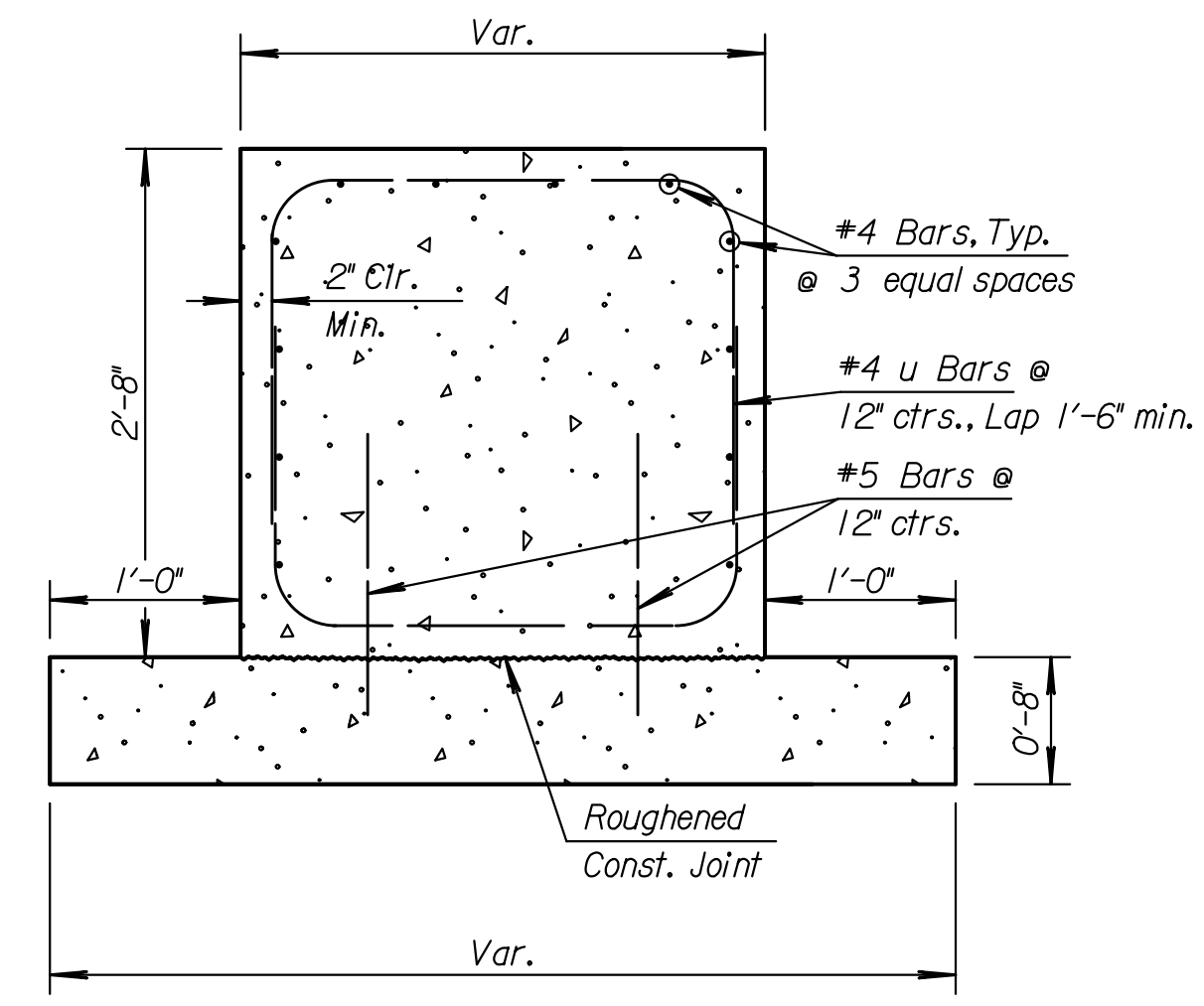
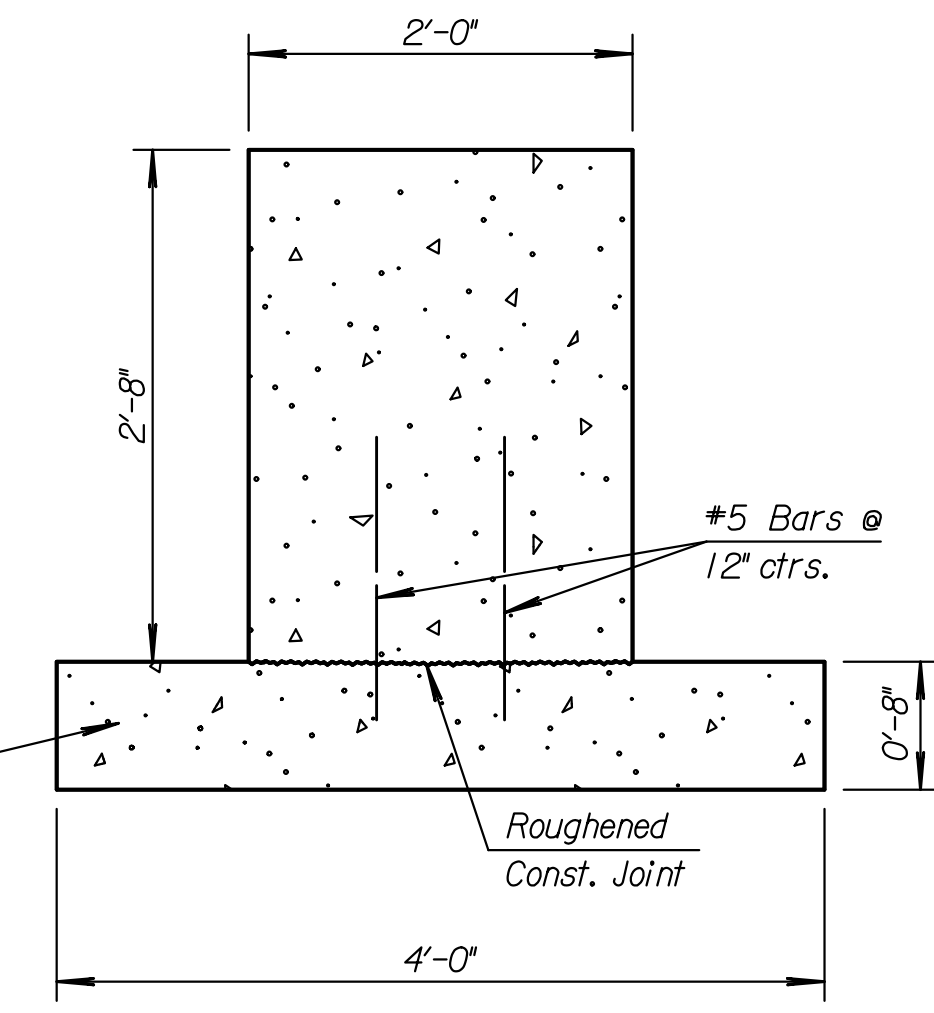
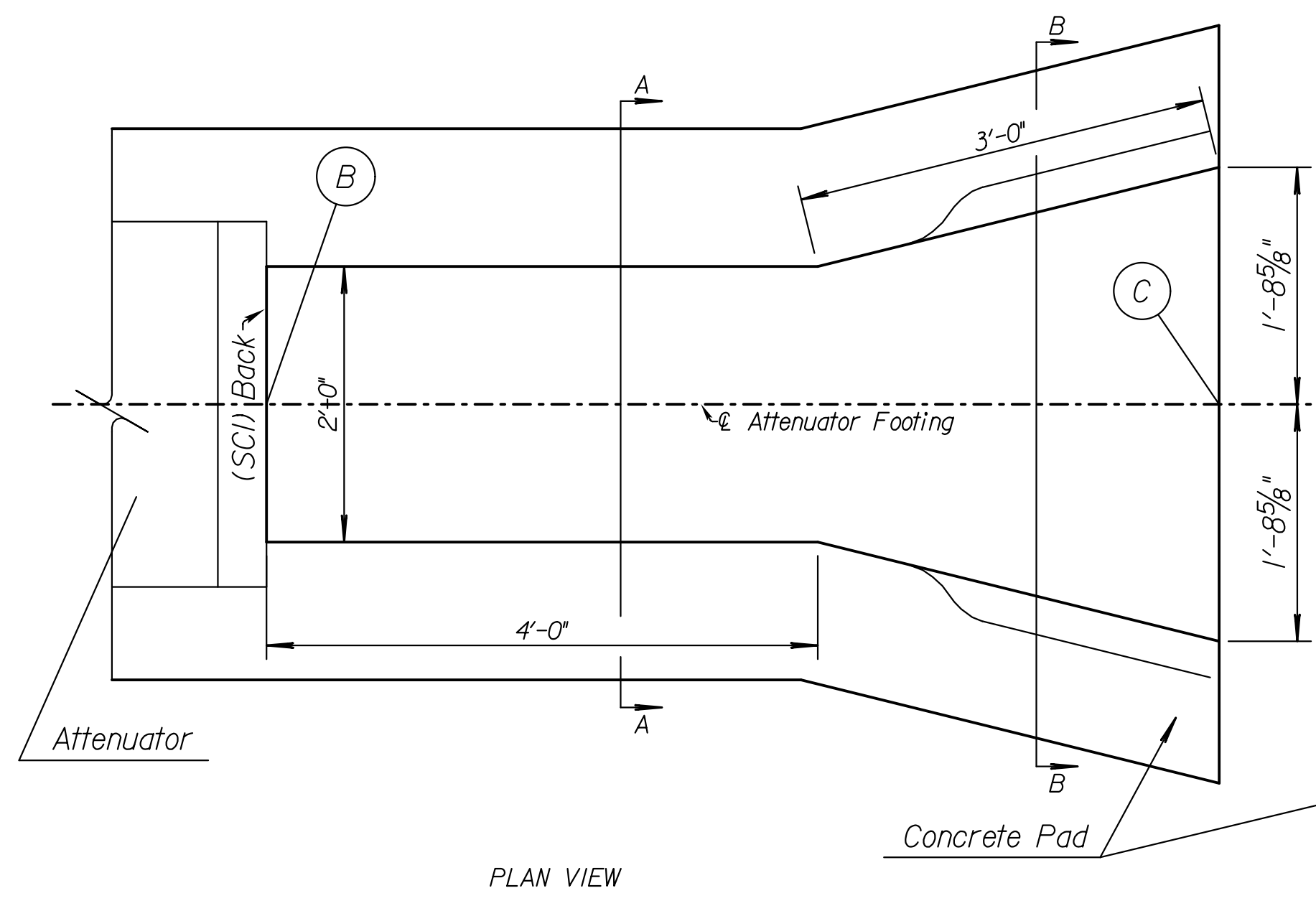
see details this sheet...

should we nest this w-beam?

For SCI and concrete pad details see RD627A

POINT	K-96		EXIT RAMP	
	DISTANCE FROM EDGE OF APPROACH SLAB	OFFSET	DISTANCE FROM EDGE OF APPROACH SLAB	OFFSET
A	187.63'	19.29' Rt	132.13'	8.25' Lt
B	164.86'	22.14' Rt	119.32'	11.18' Lt
C	158.00'	22.97' Rt	112.47'	12.06' Lt

### CONCRETE BLOCK DETAIL

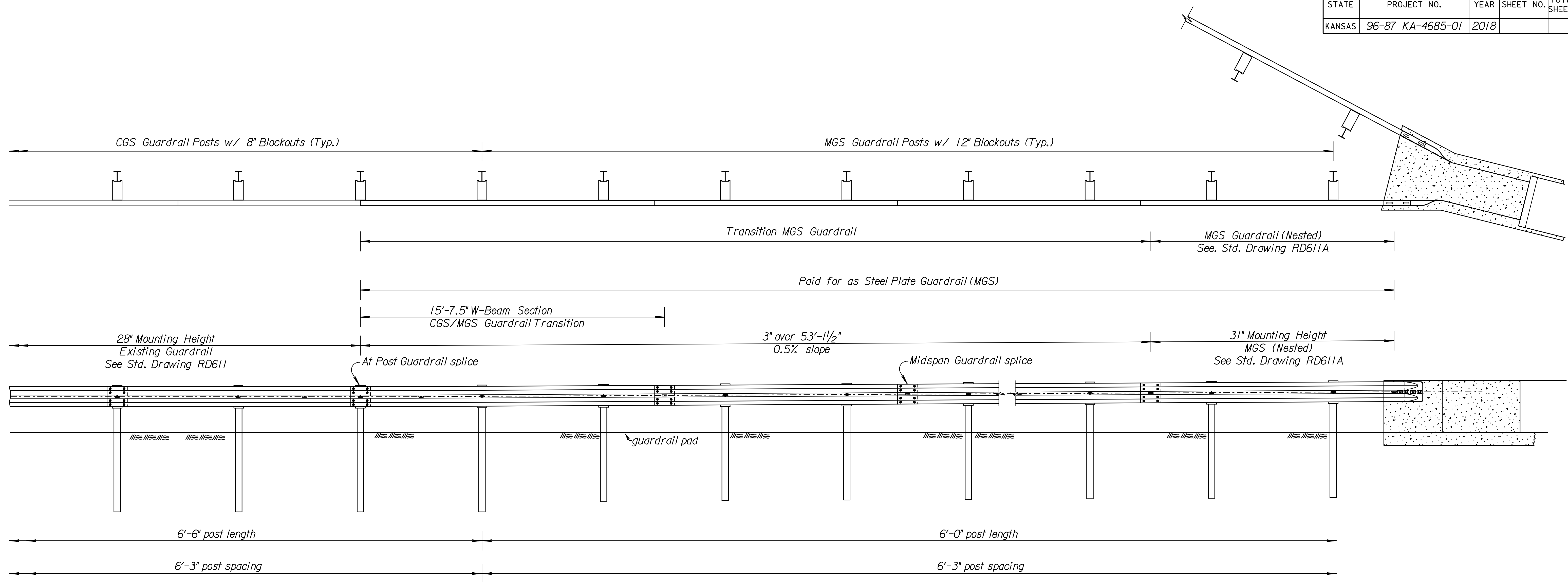


For reinforcement in Section A-A see RD627A example median barrier

KANSAS DEPARTMENT OF TRANSPORTATION  
GORE PROTECTION DETAIL  
SITE #1 & #2

Plotted : 26-APR-2018 11:26  
Drawn By : sallyb  
File : ka468501rgr-01.dgn

STATE	PROJECT NO.	YEAR	SHEET NO.	TOTAL SHEETS
KANSAS	96-87 KA-4685-01	2018		



NOTE: Maintain a 1" space from the top of post to the top of rail in the MGS transition section. Post embedment depth in the MGS transition will vary to accommodate the 3" mounting height transition.

Plotted : 26-APR-2018 11:29

Drawn By : sallyp  
File : KA468501rpd-01.dgn

KANSAS DEPARTMENT OF TRANSPORTATION

Miscellaneous  
Guardrail Details

FHWA APPROVAL		APP'D.	
DESIGNED	DETAILED	QUANTITIES	TRACED
DESIGN CK.	DETAIL CK.	QUAN. CK.	TRACE CK.

CADconform Certify This File

Sh. No.

CADconform Certify This File