

CONNECTION NOTES:

FOR DIVIDED ROADWAY

INSTALL THRIE-BEAM END SHOE,
BETWEEN NESTED GUARDRAIL ELEMENTS.
(SUBSIDIARY TO BRIDGE APPROACH SECTION)

TRAFFIC FLOW →

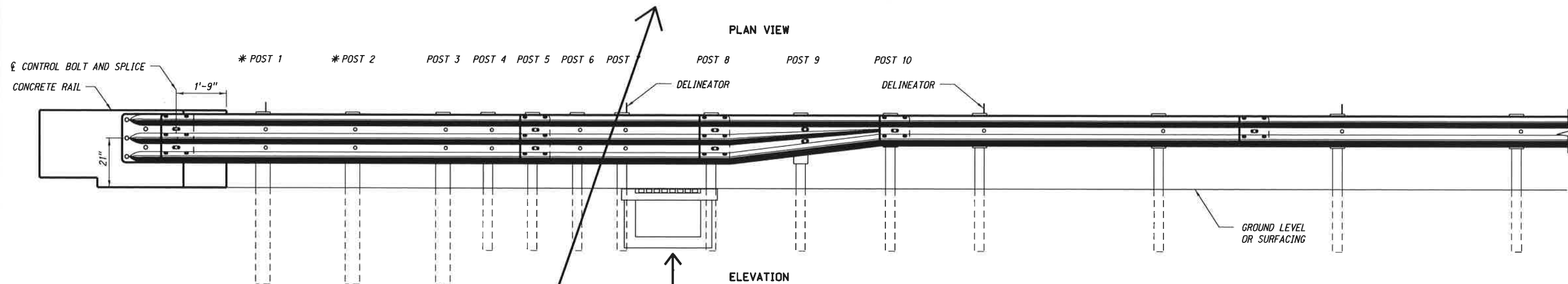
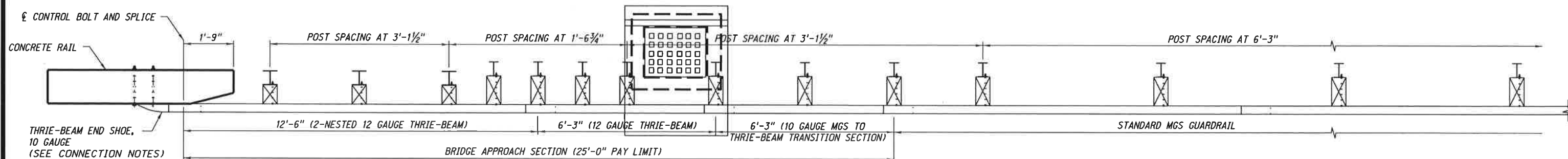
FOR 2-LANE ROADWAY

FOR APPROACHING TRAFFIC
INSTALL THRIE-BEAM END SHOE,
BETWEEN NESTED GUARDRAIL ELEMENTS.
(SUBSIDIARY TO BRIDGE APPROACH SECTION)

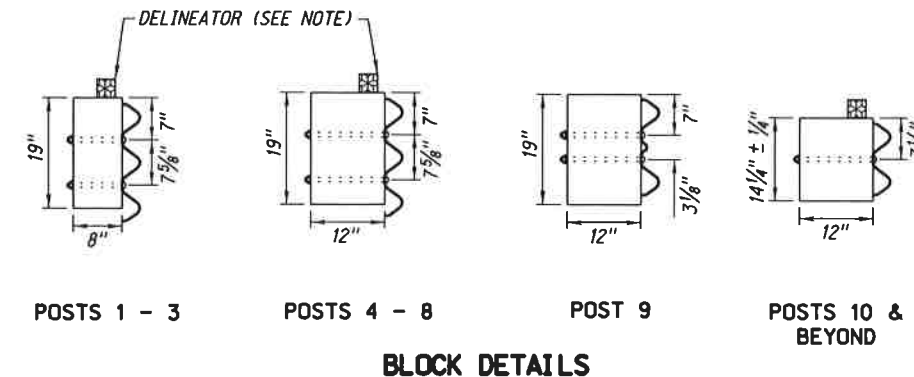
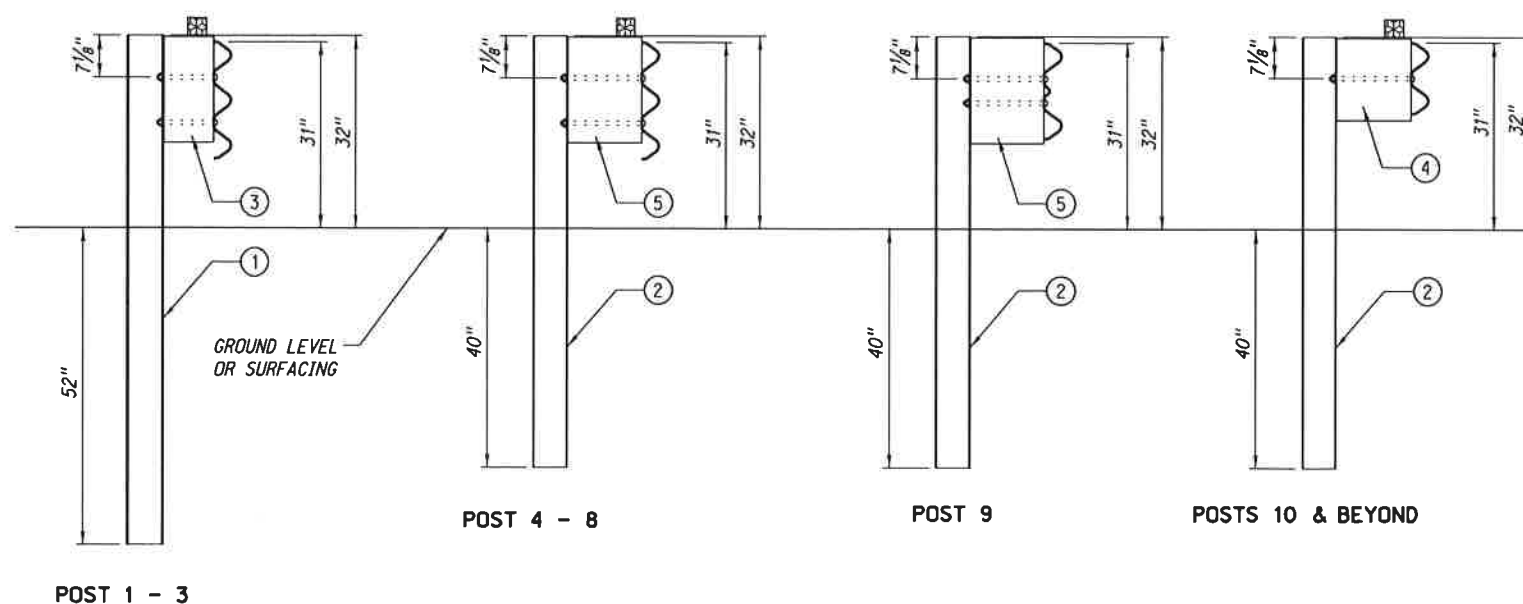
FOR OFF END CONNECTIONS
INSTALL THRIE-BEAM END SHOE,
OUTSIDE OF THE NESTED GUARDRAIL ELEMENTS.
(SUBSIDIARY TO BRIDGE APPROACH SECTION)

LEGEND

- ① W6 × 15 × 7' POST
- ② W6 × 9 × 6' POST
- ③ 6" × 8" × 19" OFFSET BLOCK
- ④ 6" × 12" × 14 1/4" ± 1/4" OFFSET BLOCK
- ⑤ 6" × 12" × 19" OFFSET BLOCK



Approx. Location of New Inlet



NOTES:

FOR ADDITIONAL DETAILS SEE PLAN 743.

DELINEATORS SUBSIDIARY TO BRIDGE APPROACH SECTION.

BUTTON HEAD BOLT 5/8" DIA. × LENGTH AS REQUIRED,
SECURED WITH WASHER AND HEX NUT.

ALL STEEL MEMBERS SHALL BE GALVANIZED IN ACCORDANCE
WITH THE STANDARD SPECIFICATIONS.

REV. NO.	DATE	DESCRIPTION OF REVISION

NEBRASKA DEPARTMENT OF ROADS
STANDARD PLAN NO. 740

MIDWEST GUARDRAIL SYSTEM BRIDGE APPROACH SECTION

ACCEPTED BY FHWA FOR USE ON THE
NATIONAL HIGHWAY SYSTEM:



DATE
ORIGINAL:
AUGUST 25, 2011
DATE

1
1