

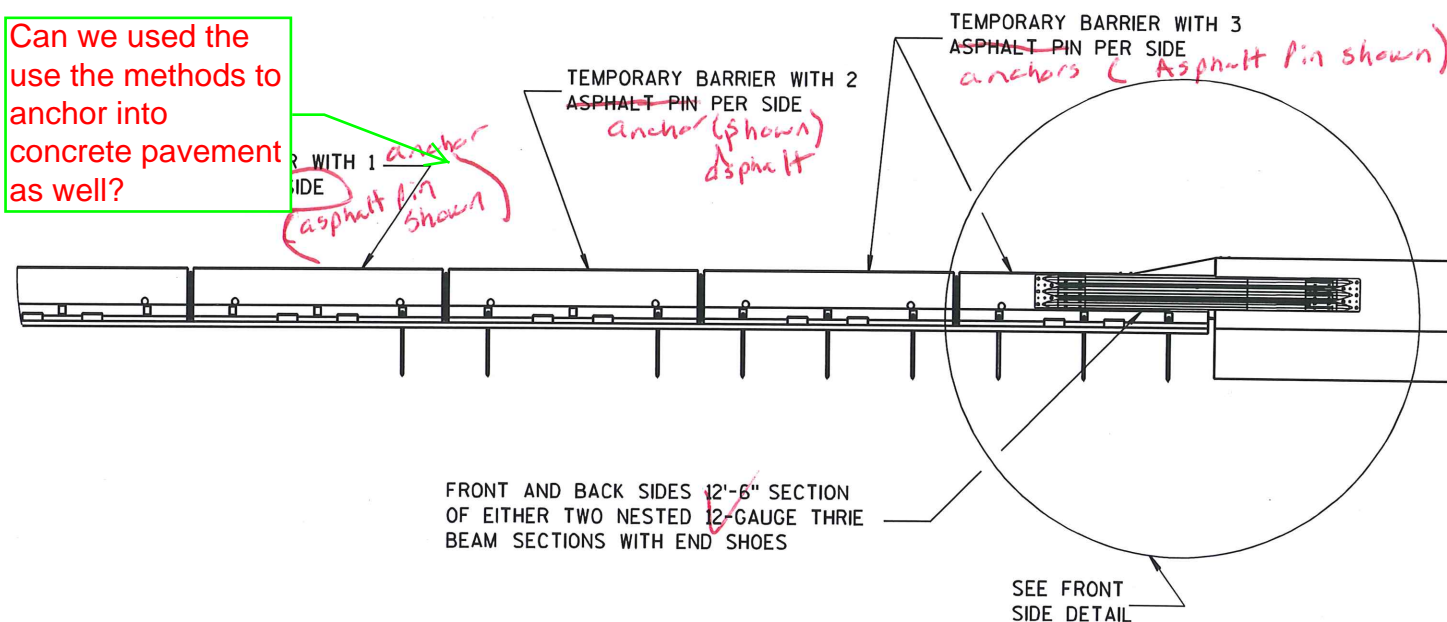
FRONT VIEW

NOTES

1. CAP END PLATE PLACED FLUSH WITH UPSTREAM END OF PERMANENT BARRIER OR PARAPET.
2. THREE BEAM PIECES ARE OFFSET $15\frac{1}{4}$ " TO PREVENT INTERFERENCE FROM THE ANCHORS ON OPPOSING SIDES.

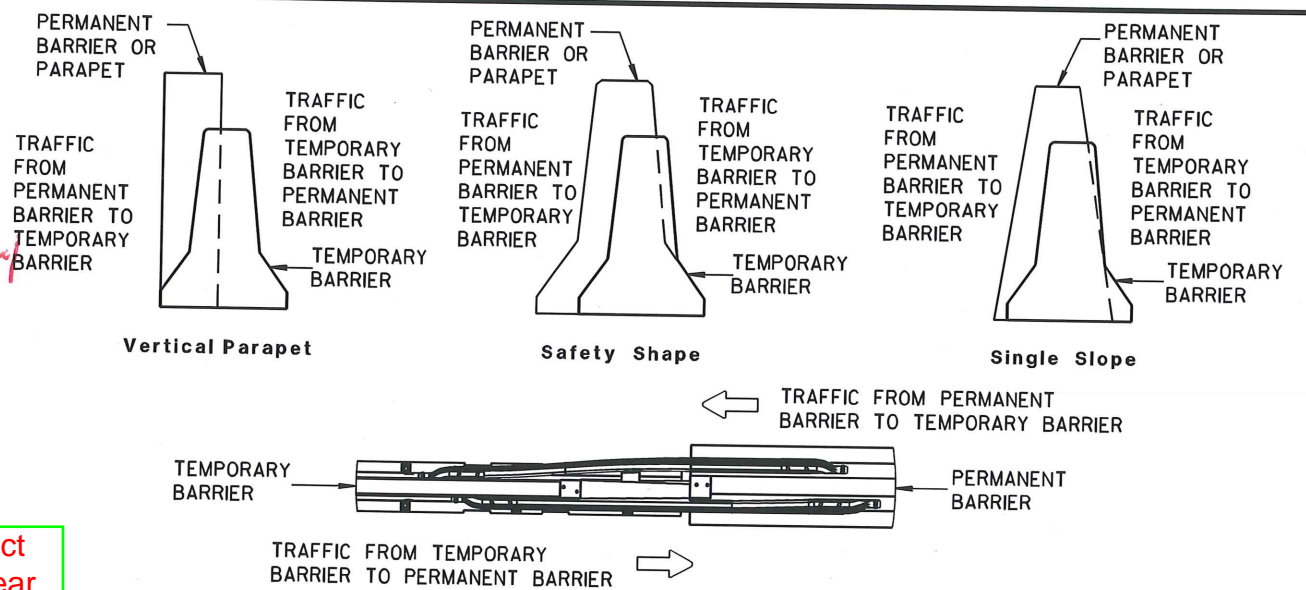
3. Shear — 1b, Tension — 1b

Can we use the methods to anchor into concrete pavement as well?

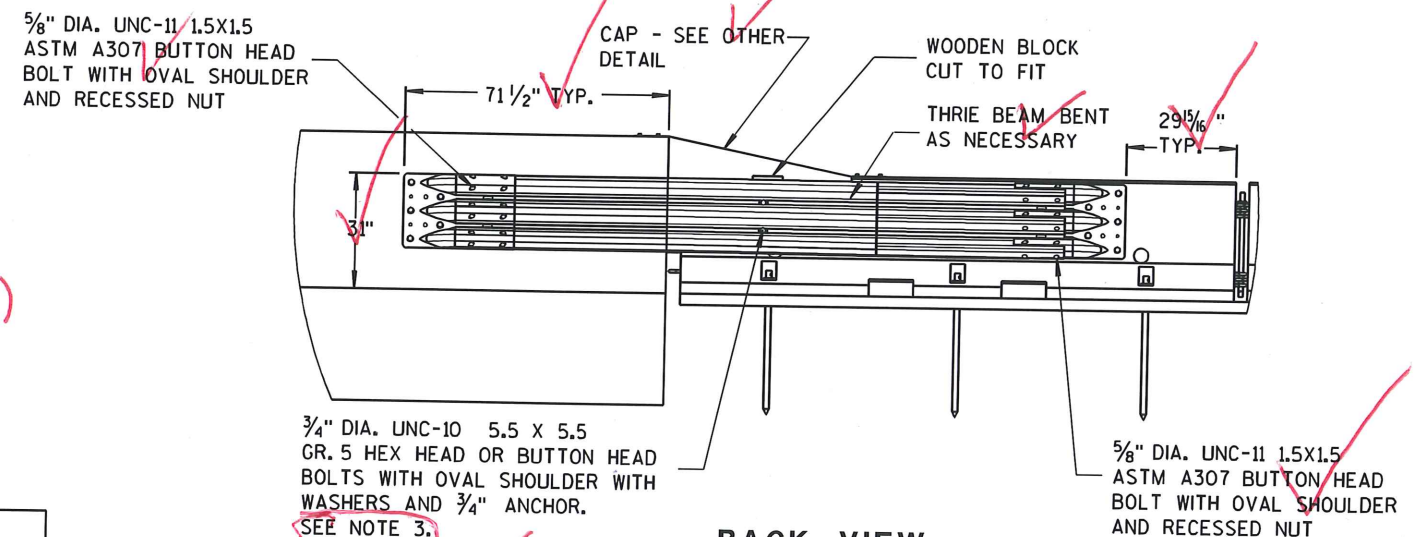


FRONT VIEW

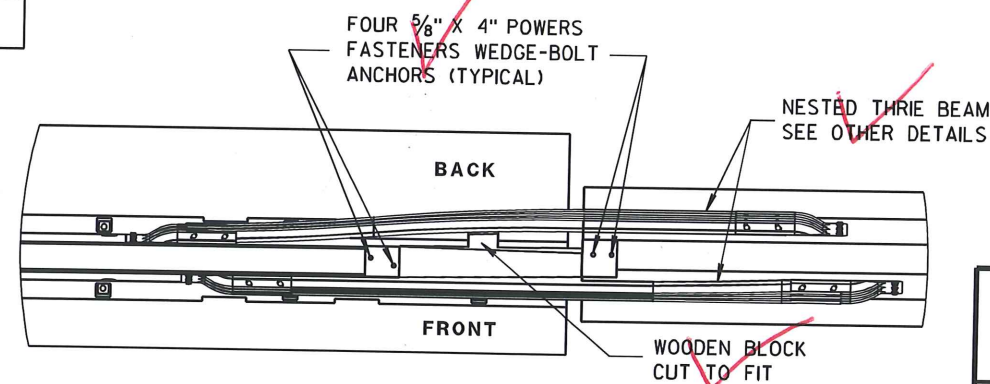
BI-DIRECTIONAL TRANSITION TO TIED-DOWN SYSTEM



TEMPORARY BARRIER PLACEMENT FOR BI-DIRECTIONAL TRANSITION TO TIED-DOWN SYSTEM



BACK VIEW



PLAN VIEW

CONCRETE BARRIER TEMPORARY PRECAST, 12'-6"	
STATE OF WISCONSIN DEPARTMENT OF TRANSPORTATION	
APPROVED	DATE
FHWA	ROADWAY STANDARD DEVELOPMENT ENGINEER

DRAFT
10-12-10