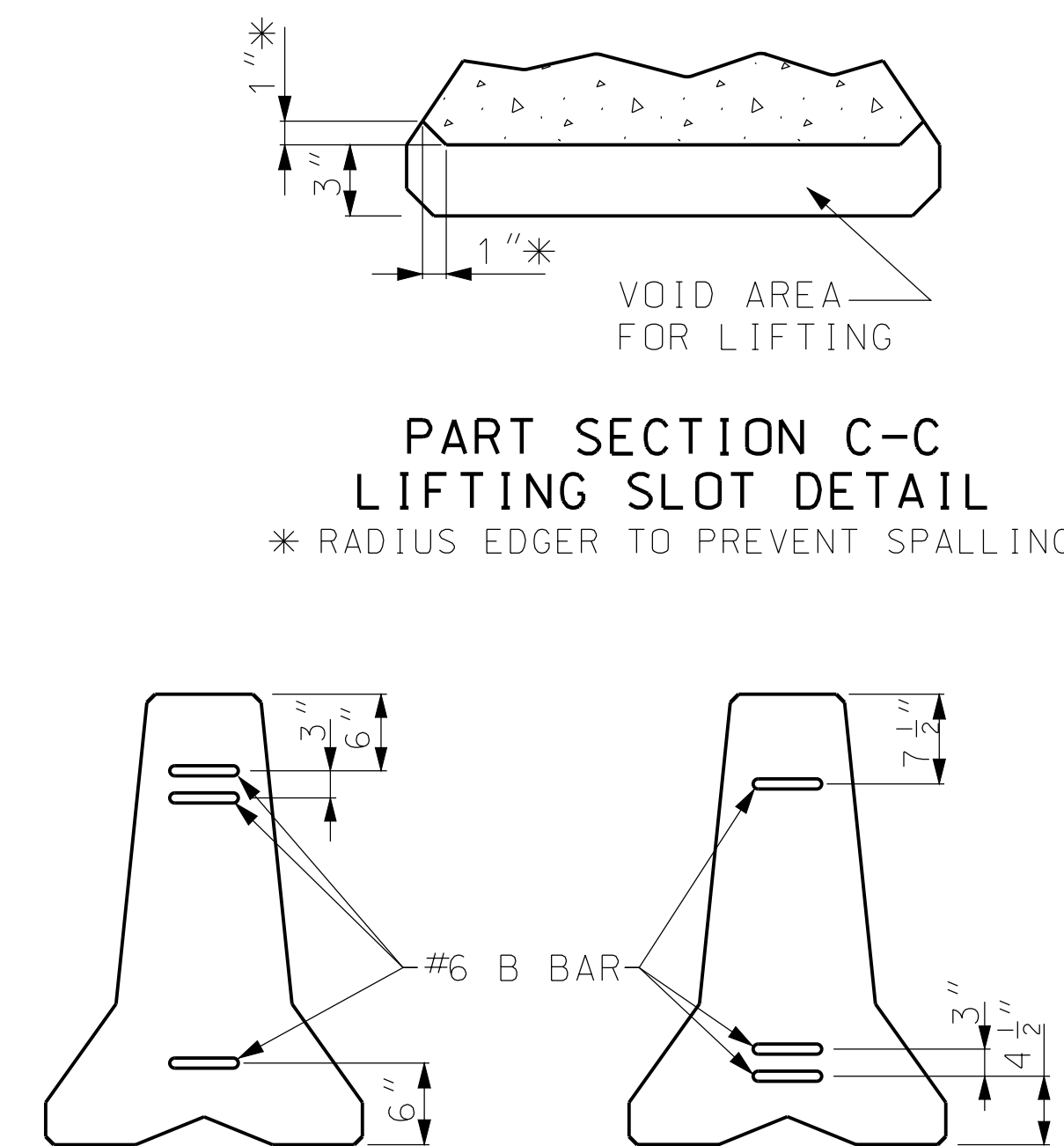


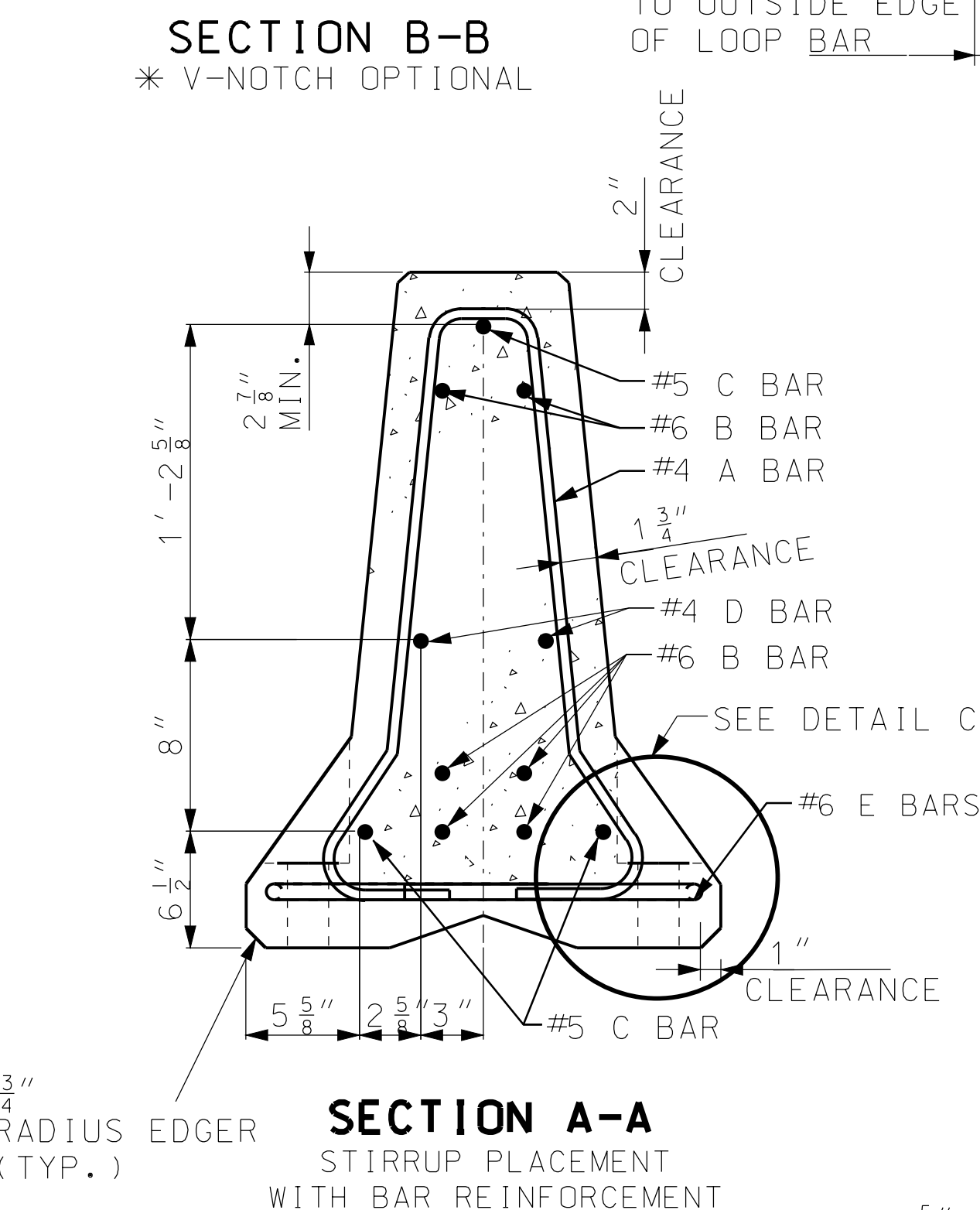
ELEVATION VIEW

(1) 4 INCH DIAMETER - 11 GAUGE STEEL ROUND MECHANICAL TUBING SLEEVE. THESE HOLES ARE OPTIONAL.

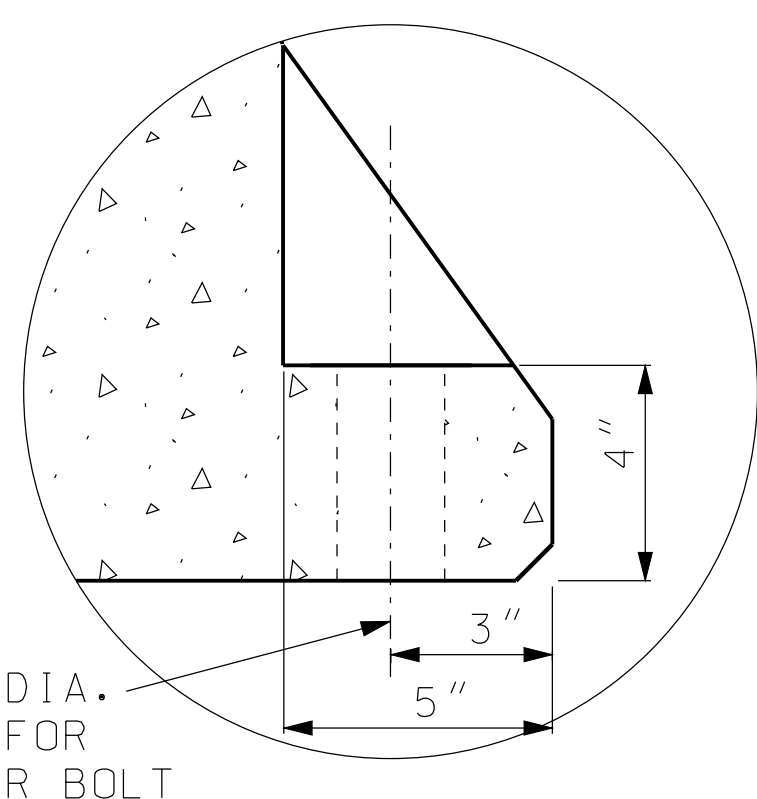


PART SECTION C-C LIFTING SLOT DETAIL  
\* RADIUS EDGER TO PREVENT SPALLING

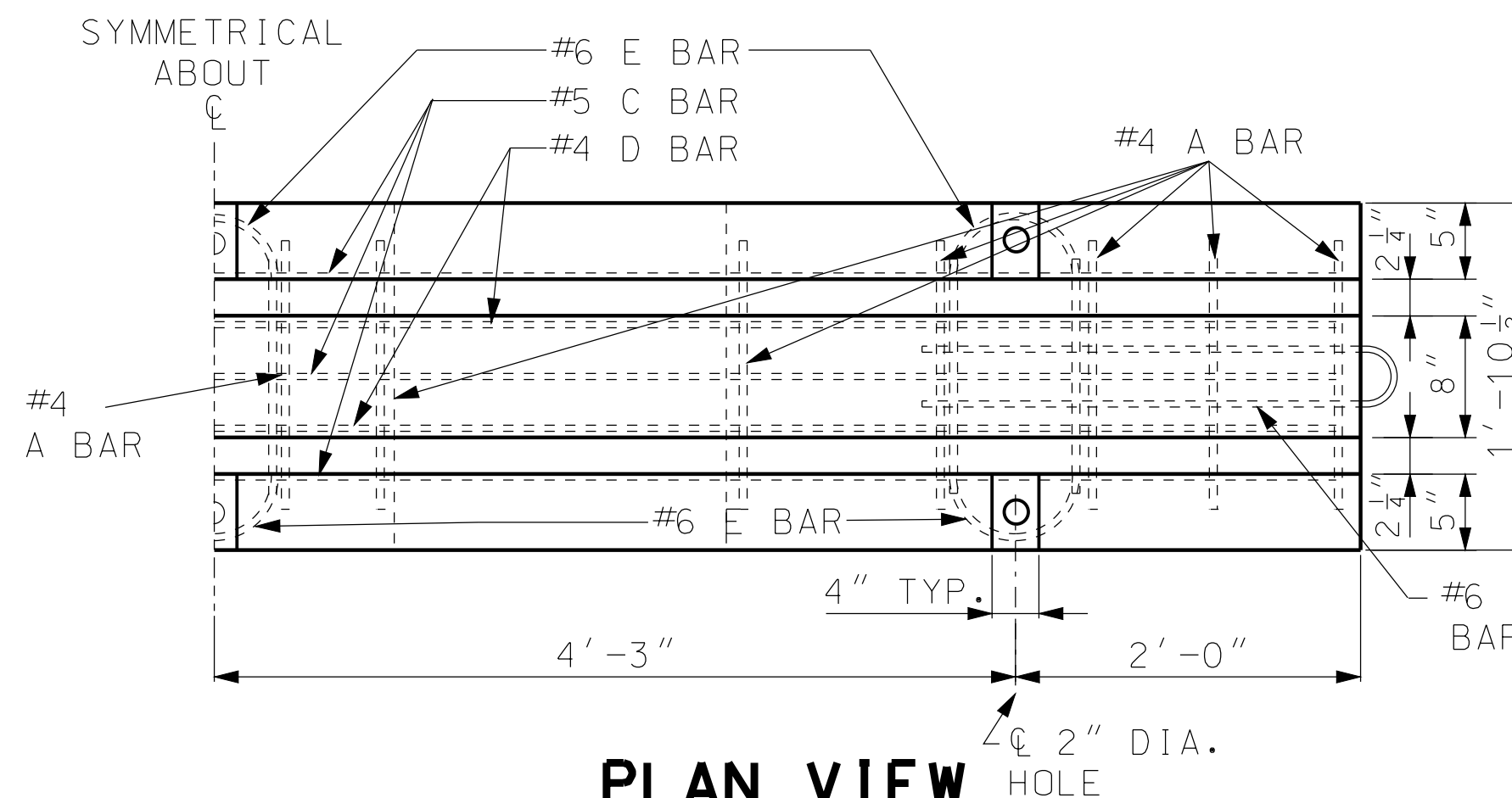
ALTERNATING END VIEWS FOR BARRIER LOOP CONNECTION



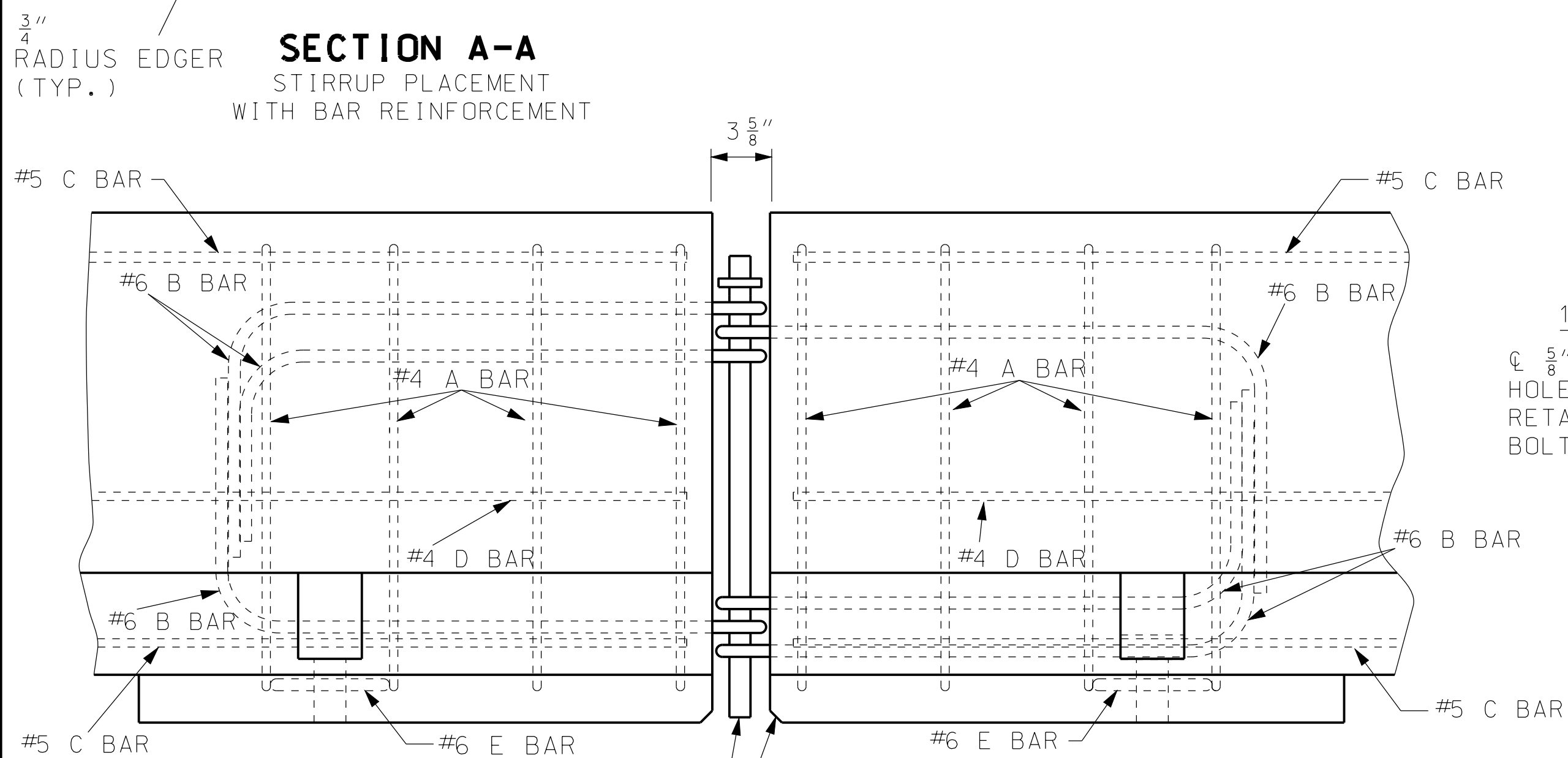
SECTION A-A STIRRUP PLACEMENT WITH BAR REINFORCEMENT



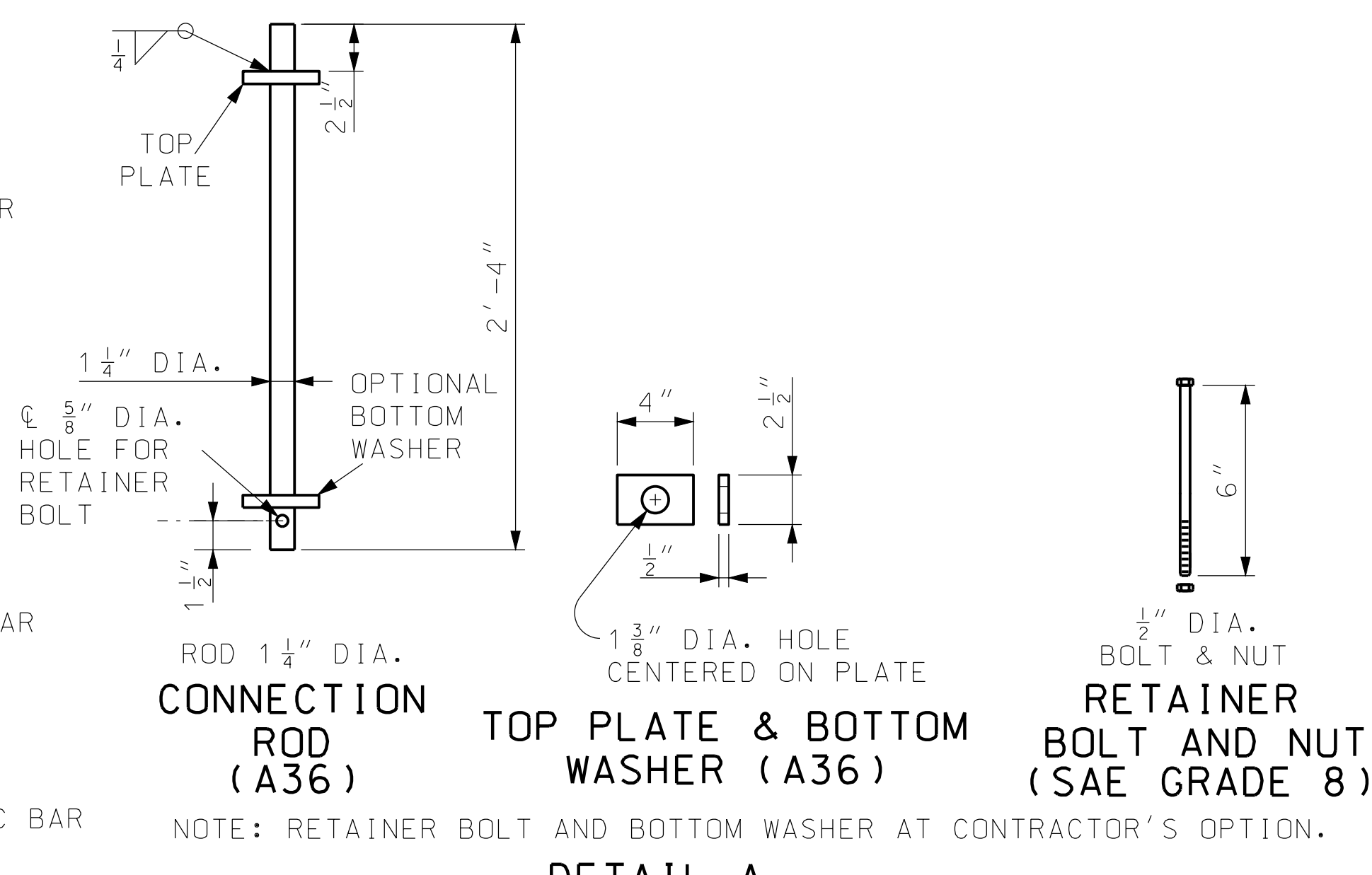
DETAIL C



PLAN VIEW



SEE DETAIL A DETAILS OF BARRIER CONNECTION



CONNECTION ROD ASSEMBLY

GENERAL NOTES:

ALL REINFORCING SHALL MEET REQUIREMENTS OF CRSI EXCEPT WHERE SHOWN ON PLANS.

REINFORCING STEEL CLEARANCE TO EDGE OF CONCRETE SHALL BE 1 3/4" UNLESS OTHERWISE SHOWN.

AT NO TIME SHALL THE BARRIERS BE LIFTED OR MOVED BY USE OF THE LOOP BARS.

THE SECTION FURNISHED SHALL COMPLY WITH DIMENSIONS SHOWN, AS APPROVED BY THE ENGINEER.

SEE SHEET 3 FOR DELINEATOR DETAILS.

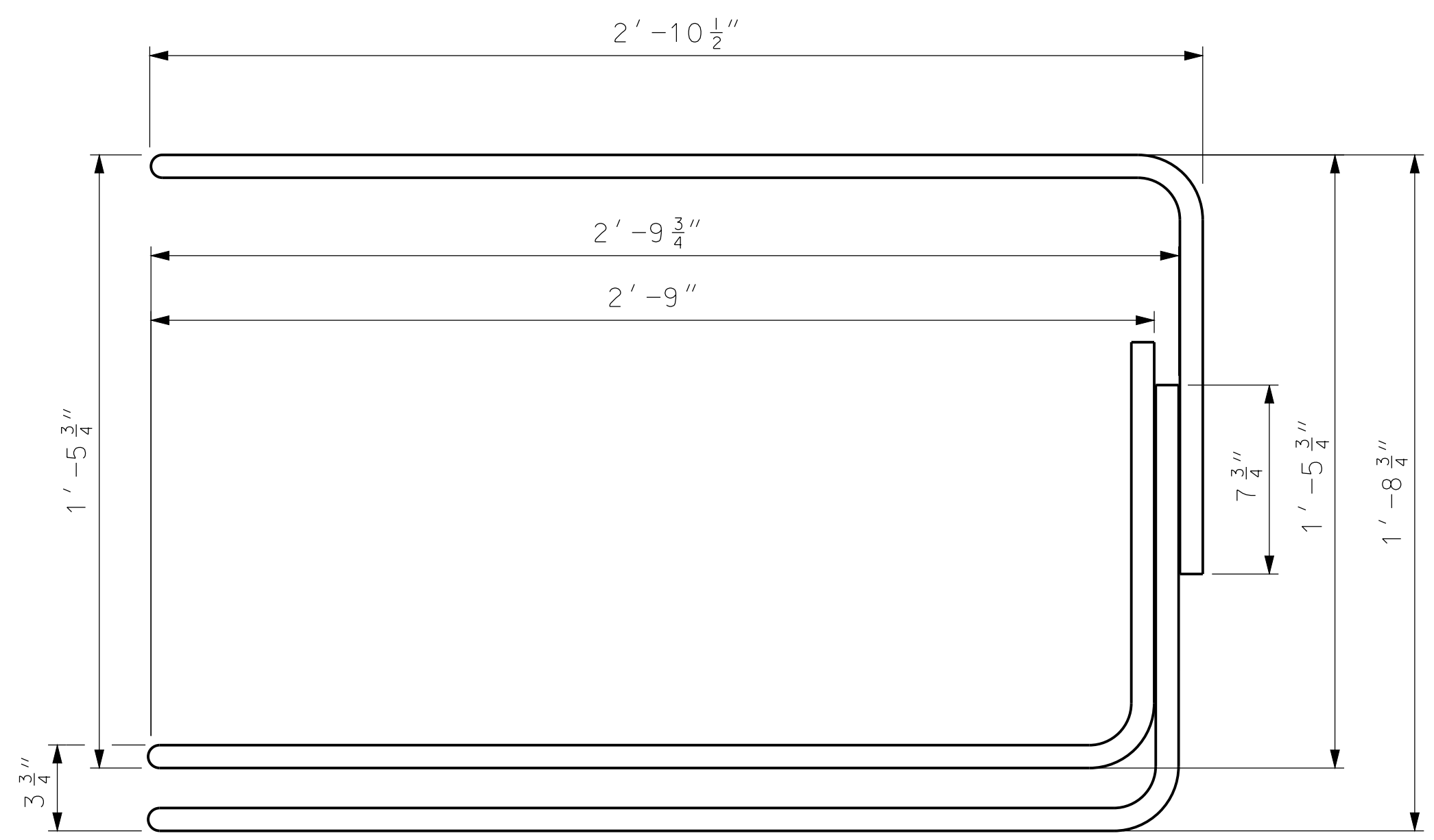
**MISSOURI HIGHWAYS AND TRANSPORTATION COMMISSION**  
 105 WEST CAPITOL  
 JEFFERSON CITY, MO 65102  
 1-888-ASK-MODOT (1-888-275-6636)

**TEMPORARY CONCRETE TRAFFIC BARRIER TYPE F**

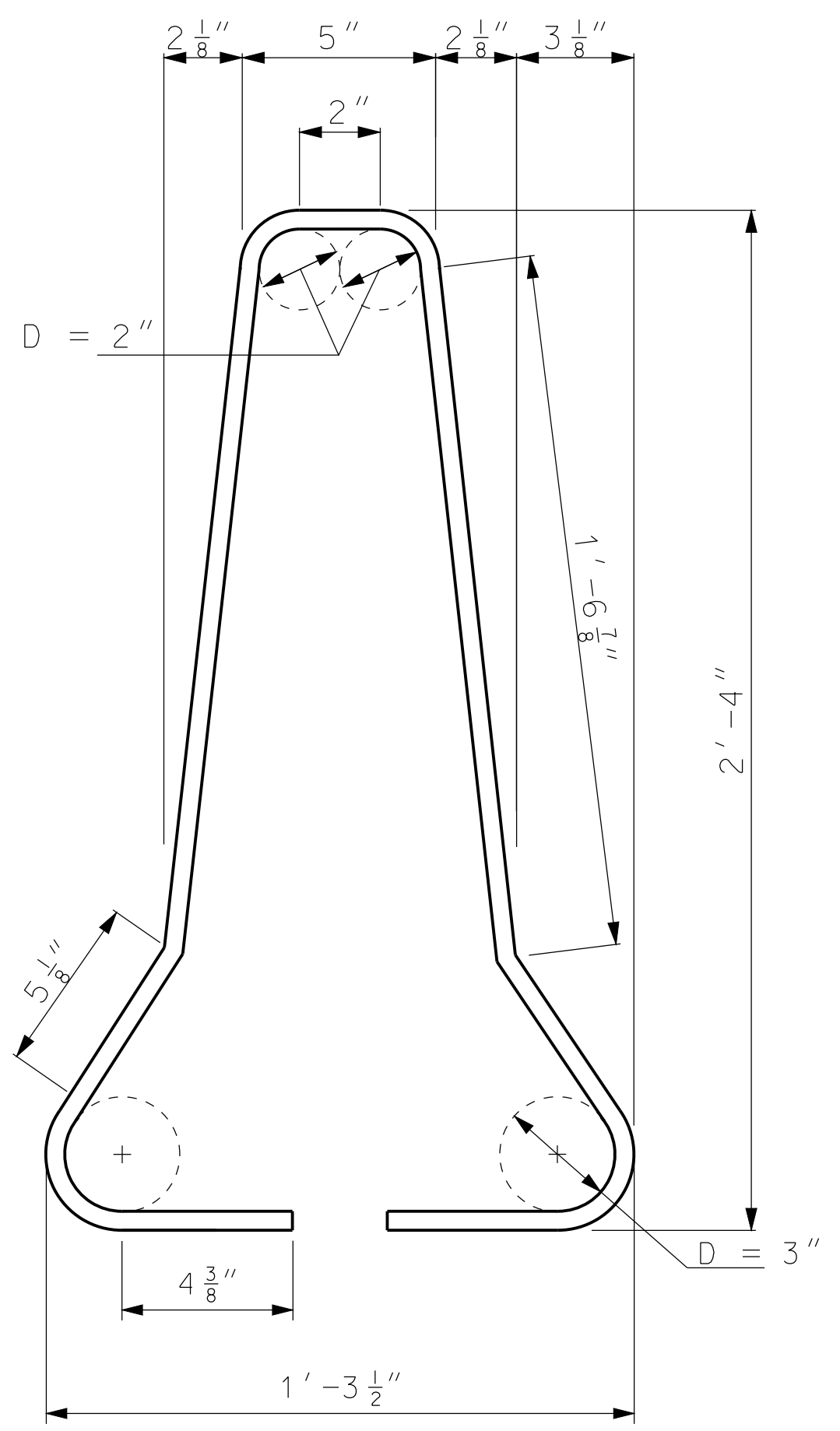
DATE EFFECTIVE: 06/01/2008	<b>617.20C</b>	SHEET NO. 1 OF 6
DATE PREPARED: 8/21/2009		

IF A SEAL IS PRESENT ON THIS SHEET IT HAS BEEN ELECTRONICALLY SEALED AND DATED.

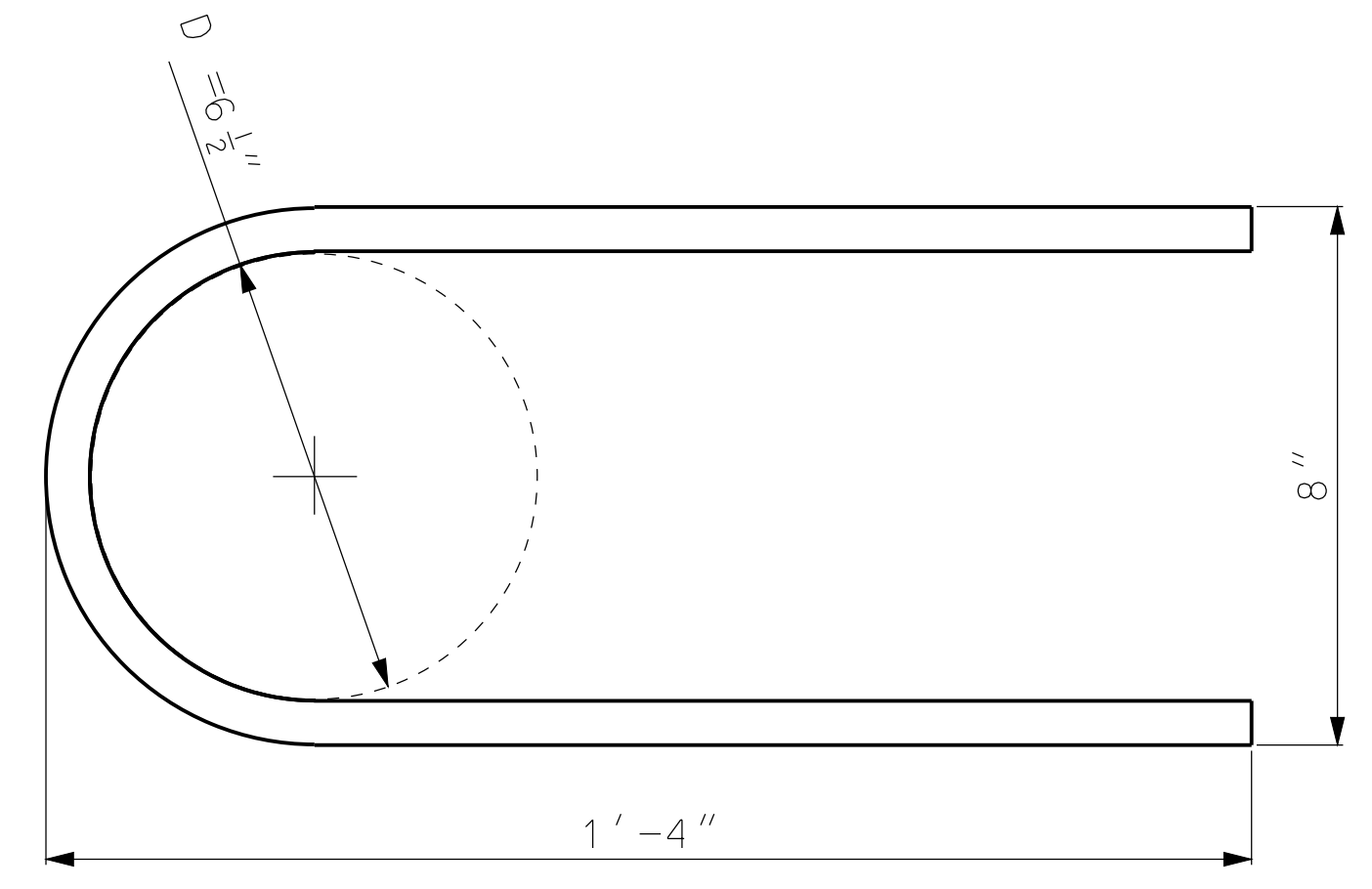
IF A SEAL IS PRESENT ON THIS SHEET IT HAS BEEN ELECTRONICALLY SEALED AND DATED.



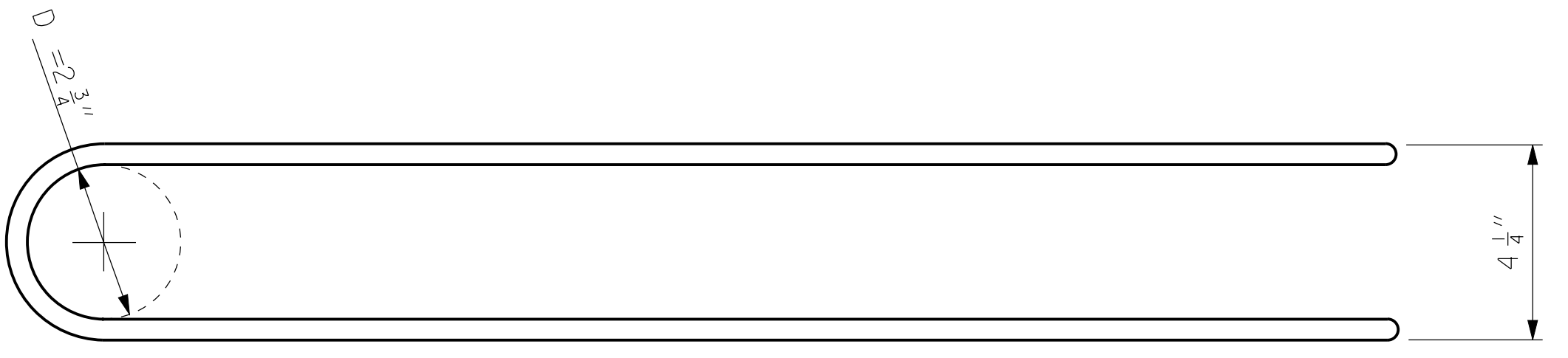
#6 B BAR ELEVATION



#4 A BARS



#6 E BAR



#6 B BAR PLAN

REINFORCING BARS					
PER 12'-6" BARRIER SECTION					
MARK	BAR SIZE	NO. OF BARS	SHAPE OF EACH	LENGTH EACH (NOM.)	WEIGHT
A	4	14		6'-5"	60.8 lbs
C	5	3		12'-2"	38.1 lbs
D	4	2		12'-2"	16.3 lbs
E	6	6		2'-11"	26.3 lbs
LOOP ASSEMBLY					
B	6	6		7'-10"	70.5 lbs

CONCRETE VOLUME 1.3 CU YDS APPROXIMATE WEIGHT 5601 LBS.

GENERAL NOTE:

DIMENSIONS ARE OUT TO OUT OF BARS UNLESS OTHERWISE NOTED.

**MoDOT** MISSOURI HIGHWAYS AND TRANSPORTATION COMMISSION  
 105 WEST CAPITOL JEFFERSON CITY, MO 65102  
 1-888-ASK-MODOT (1-888-275-6636)

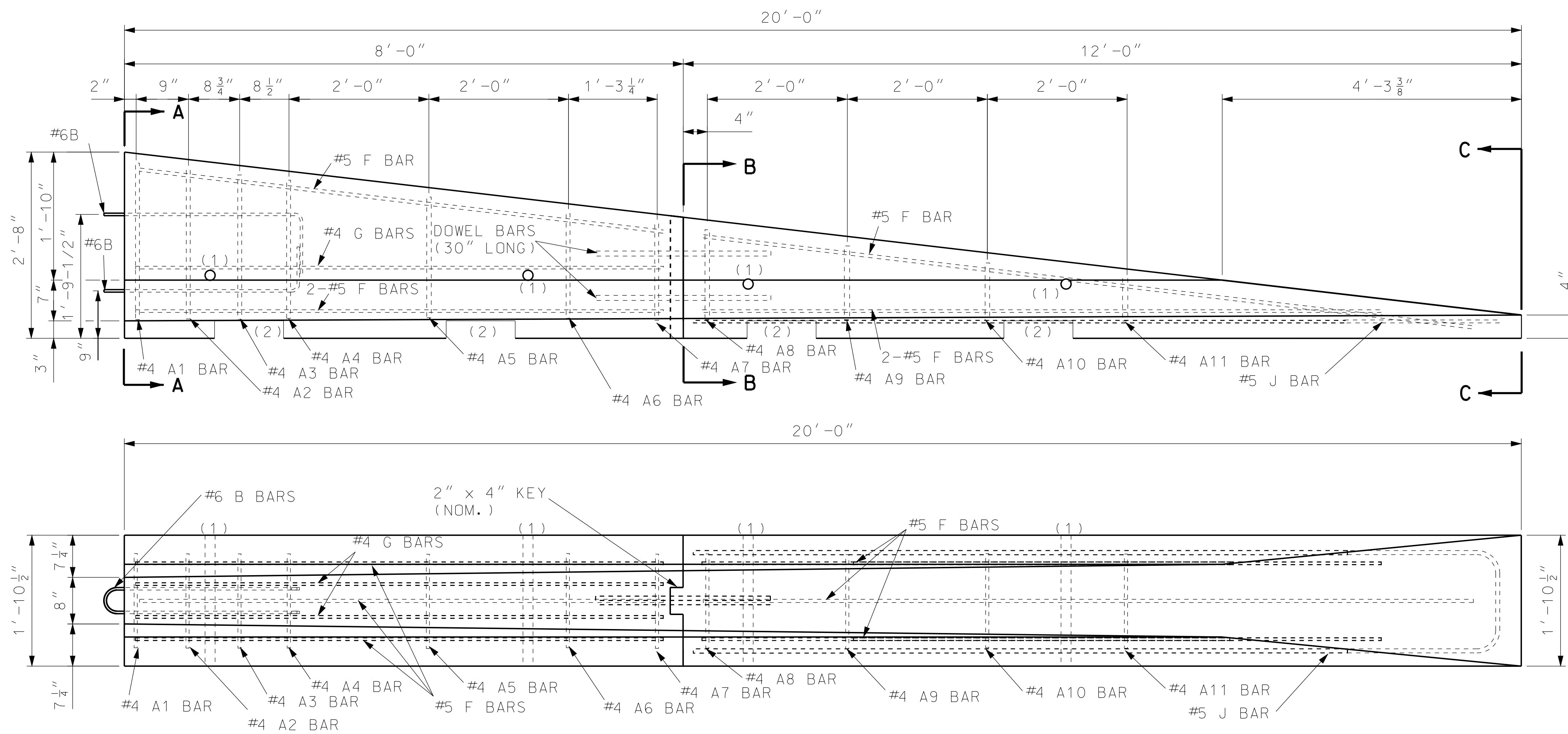
THIS MEDIA SHOULD NOT BE CONSIDERED A CERTIFIED DOCUMENT.

**TEMPORARY CONCRETE TRAFFIC BARRIER**  
 TYPE F

DATE EFFECTIVE: 06/01/2008  
 DATE PREPARED: 8/21/2009

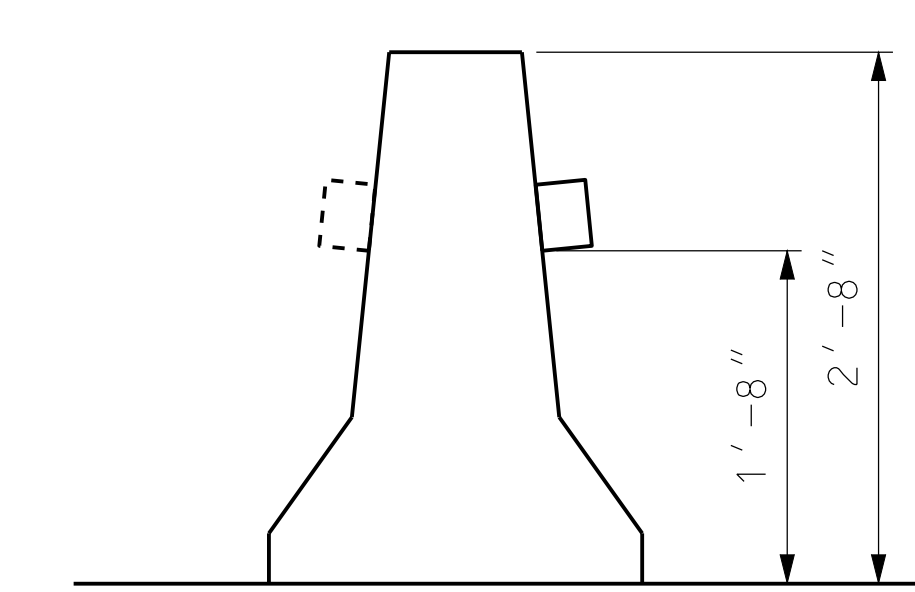
**617.20C**

SHEET NO.  
 2 OF 6

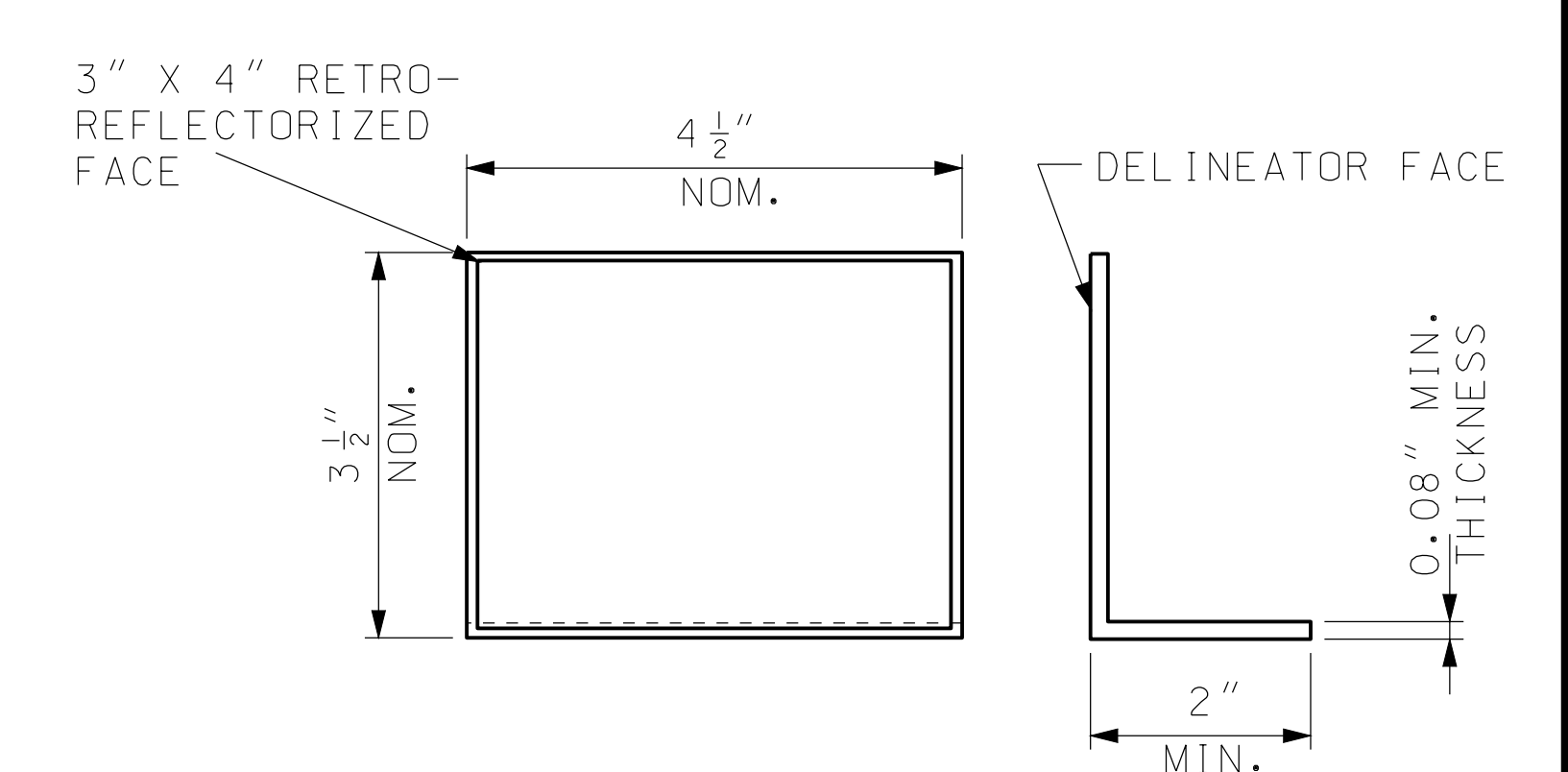


**PRECAST BARRIER HEIGHT TRANSITION  
(TEMPORARY INSTALLATIONS ONLY)**

- (1) OPTIONAL 4 INCH DIAMETER, 11 GAUGE STEEL ROUND MECHANICAL TUBING SLEEVE FOR LIFT HOLE ALLOWED. THE LOCATION OF THE HOLE MAY VARY TO ACCOMMODATE THE DIFFERING WEIGHT DISTRIBUTIONS OF TRANSITION SECTIONS.
- (2) 3" X 1'-0" SLOTS FOR LIFTING - TWO PER SECTION. LOCATION TO BE DETERMINED BY CONTRACTOR.



**TRAFFIC BARRIER DELINEATORS**



**DELINEATOR**

**GENERAL NOTES:**

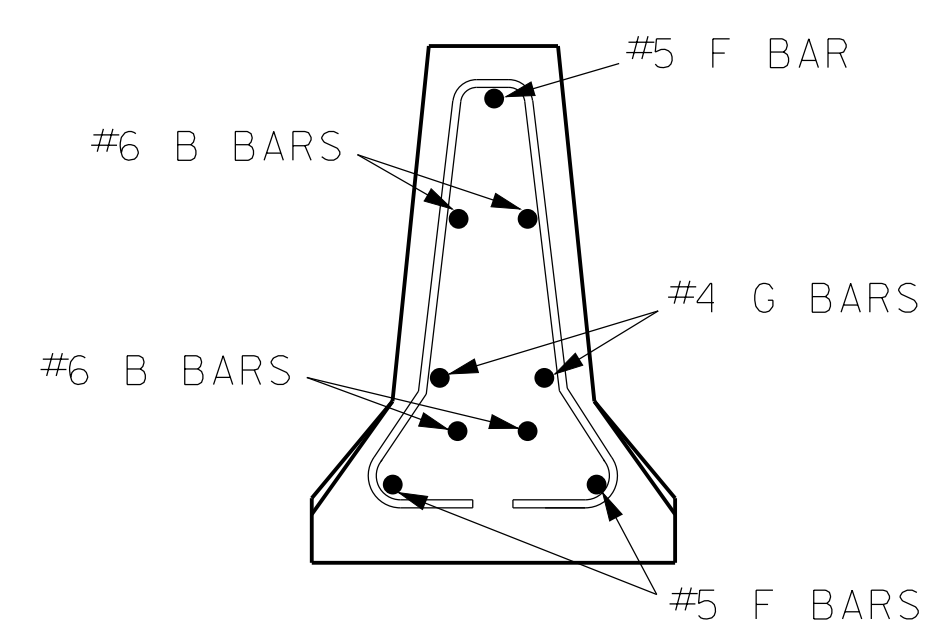
REINFORCING STEEL CLEARANCE TO EDGE OF CONCRETE SHALL BE 1 3/4" UNLESS OTHERWISE SHOWN.

HEIGHT TRANSITIONS SHALL NOT BE USED ON INTERSTATE ROUTES OR IN LOCATIONS WHERE THE POSTED SPEED PRIOR TO CONSTRUCTION IS GREATER THAN 35 MPH.

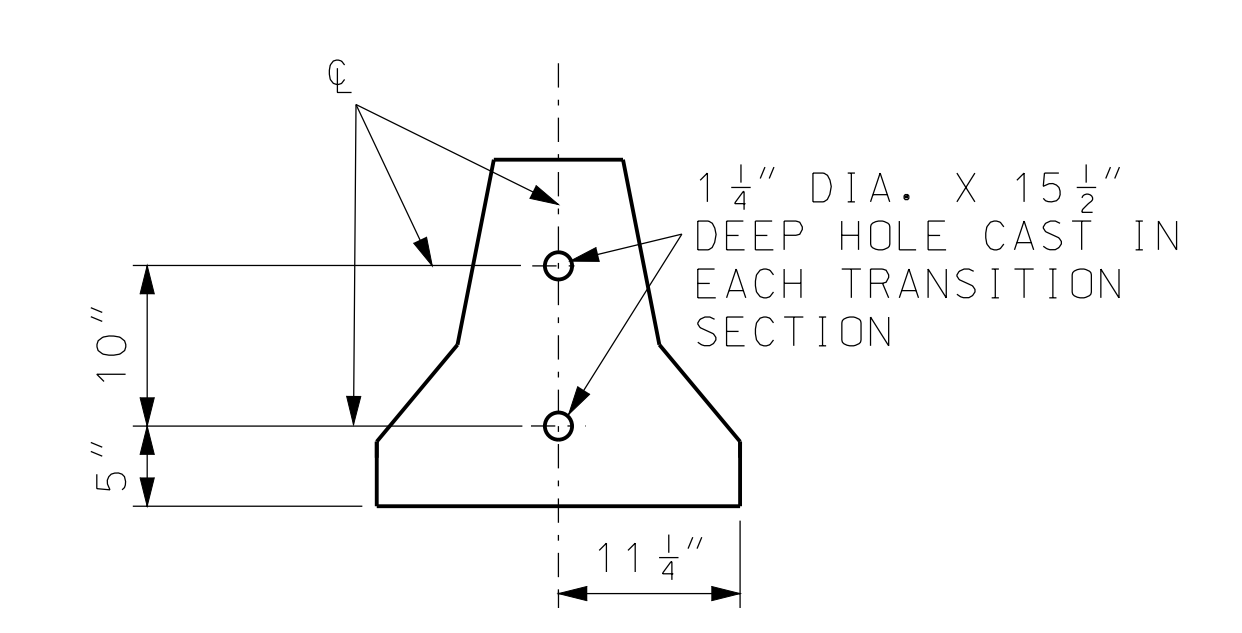
AT NO TIME SHALL THE BARRIERS BE LIFTED OR MOVED BY USE OF THE LOOP BARS.

RETAINER BOLT AND NUT MUST BE USED WITH TRANSITION BARRIER.

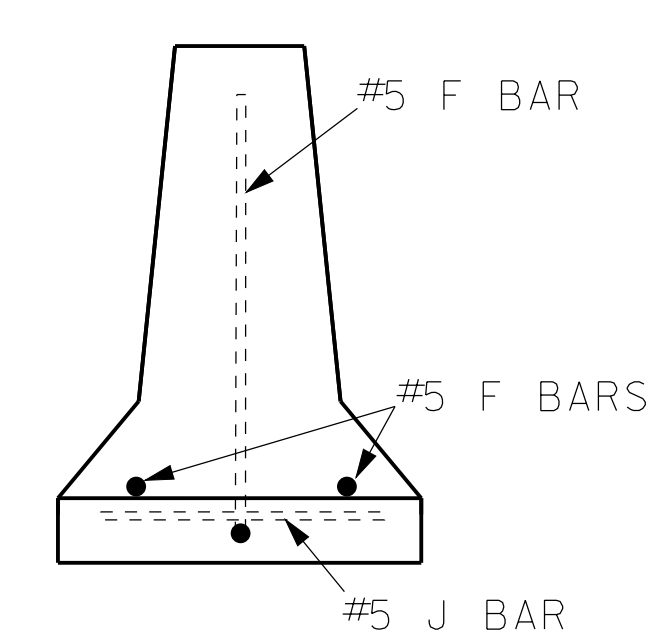
AT THE OPTION OF THE CONTRACTOR, HEIGHT TRANSITIONS MAY BE MANUFACTURED IN ONE SECTION. THE PLANS FOR REINFORCEMENT ACROSS JOINT SHALL BE APPROVED BY THE ENGINEER PRIOR TO MANUFACTURE.



**SECTION A-A**



**SECTION B-B**



**SECTION C-C**

NOTE: SECTIONS TO BE CONNECTED WITH TWO- 1" DIA. BARS OR #8 REINFORCING BARS 30" LONG IN 1 1/4" DIA. HOLES AS SHOWN.

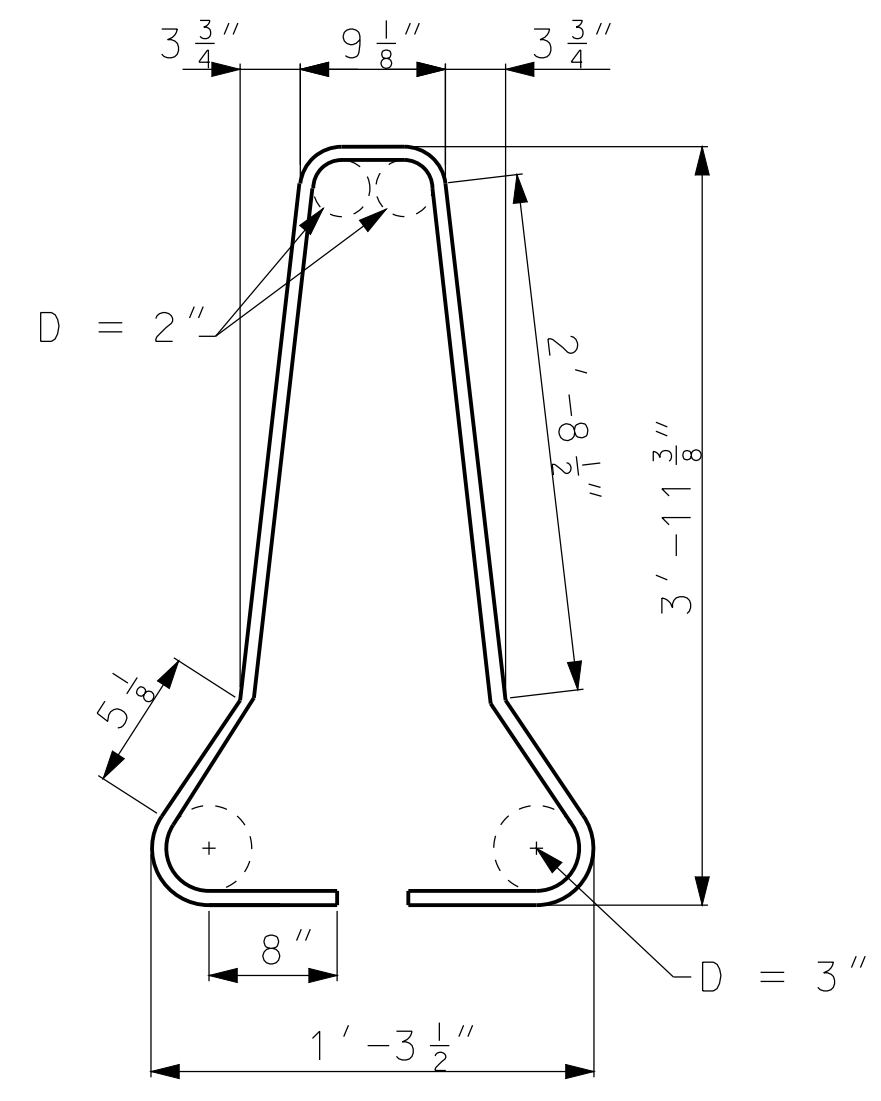
**MoDOT MISSOURI HIGHWAYS AND TRANSPORTATION COMMISSION**  
 105 WEST CAPITOL JEFFERSON CITY, MO 65102  
 1-888-ASK-MODOT (1-888-275-6636)

**TEMPORARY CONCRETE TRAFFIC BARRIER TYPE F HEIGHT TRANSITIONS**

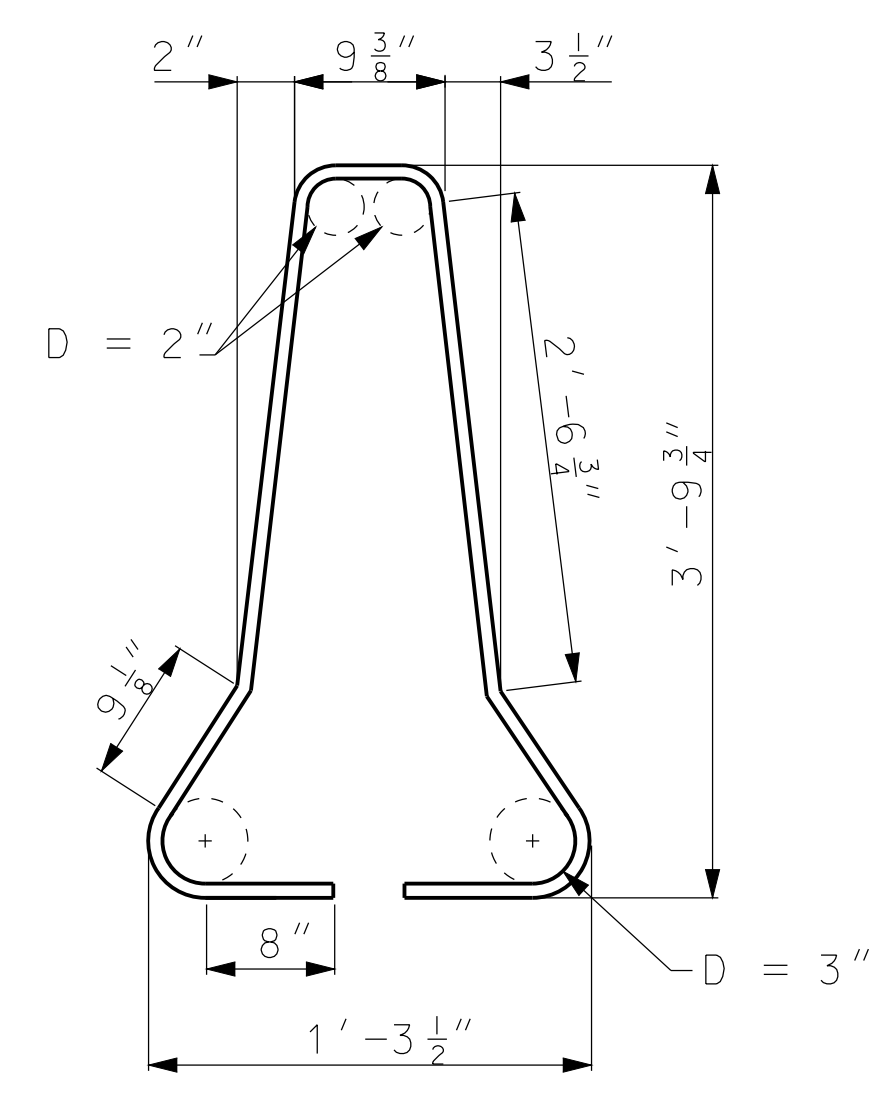
DATE EFFECTIVE: 06/01/2008	<b>617.20C</b>	SHEET NO. 3 OF 6
DATE PREPARED: 8/21/2009		

IF A SEAL IS PRESENT ON THIS SHEET IT HAS BEEN ELECTRONICALLY SEALED AND DATED.

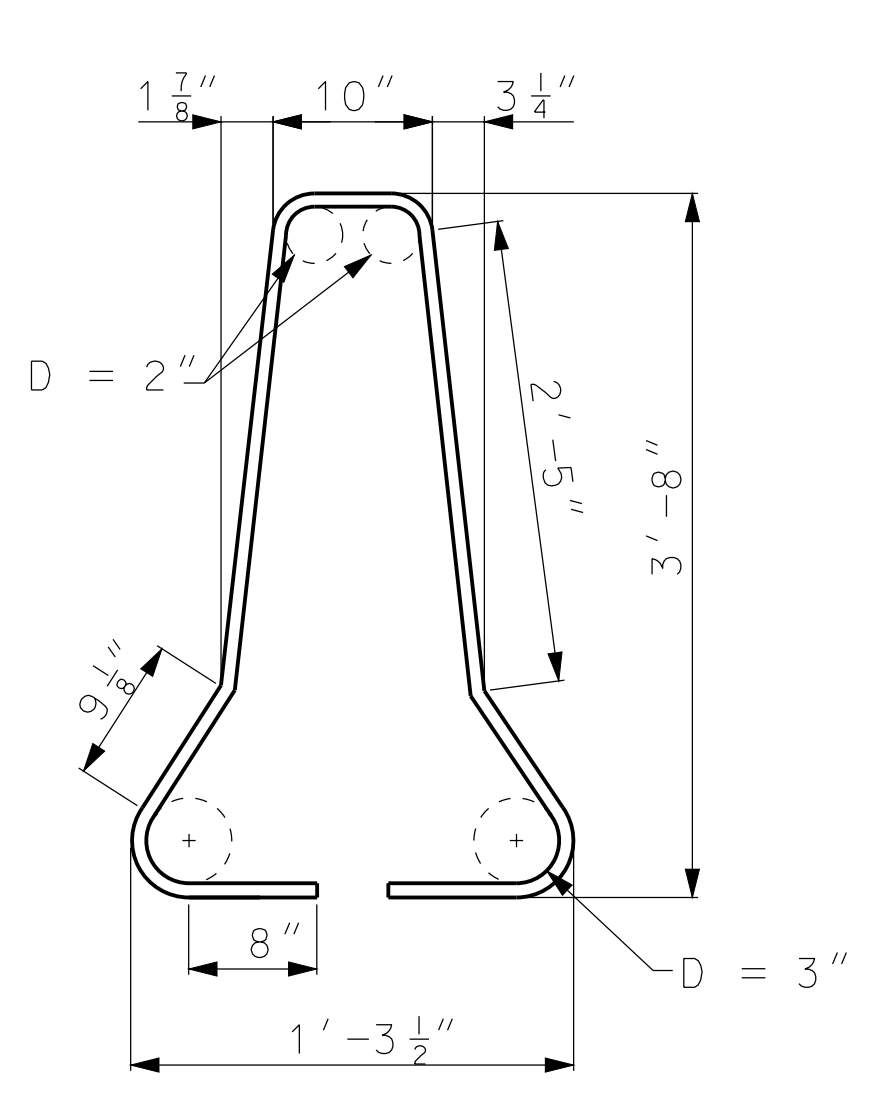
IF A SEAL IS PRESENT ON THIS SHEET IT HAS BEEN ELECTRONICALLY SEALED AND DATED.



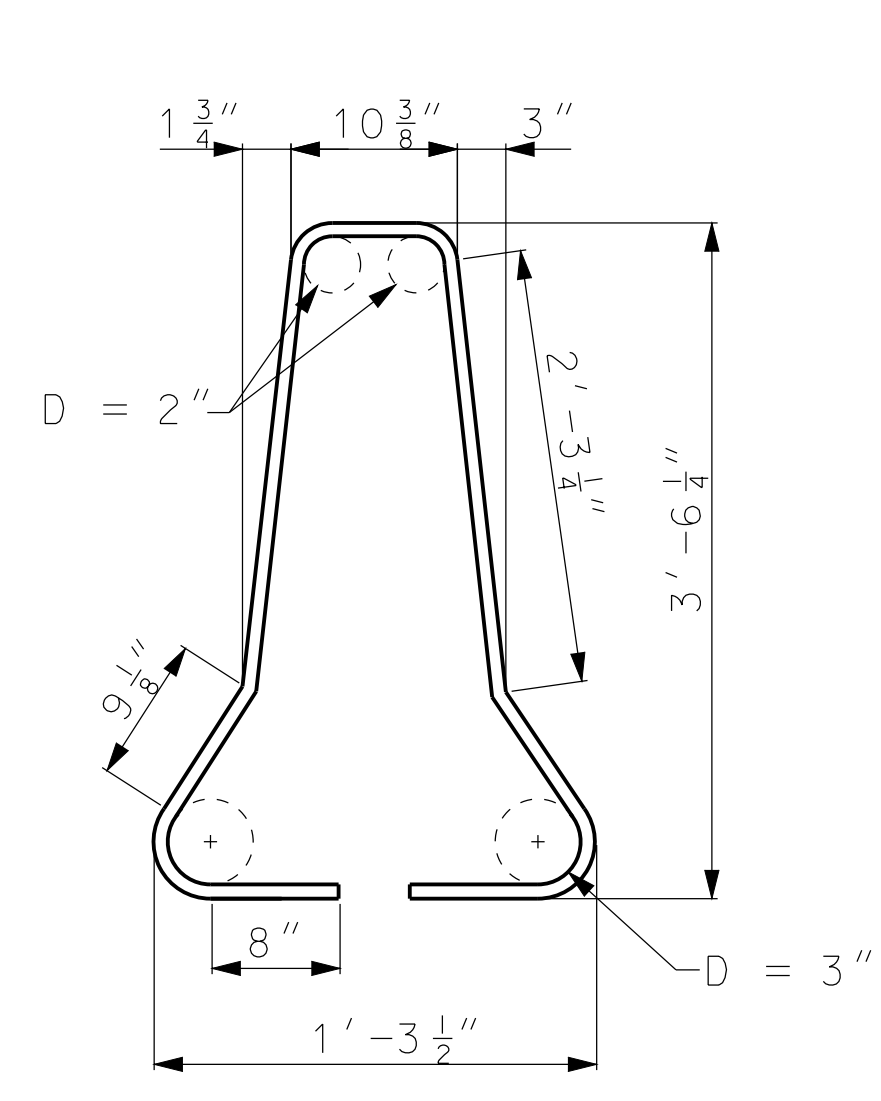
#4 A1 BAR



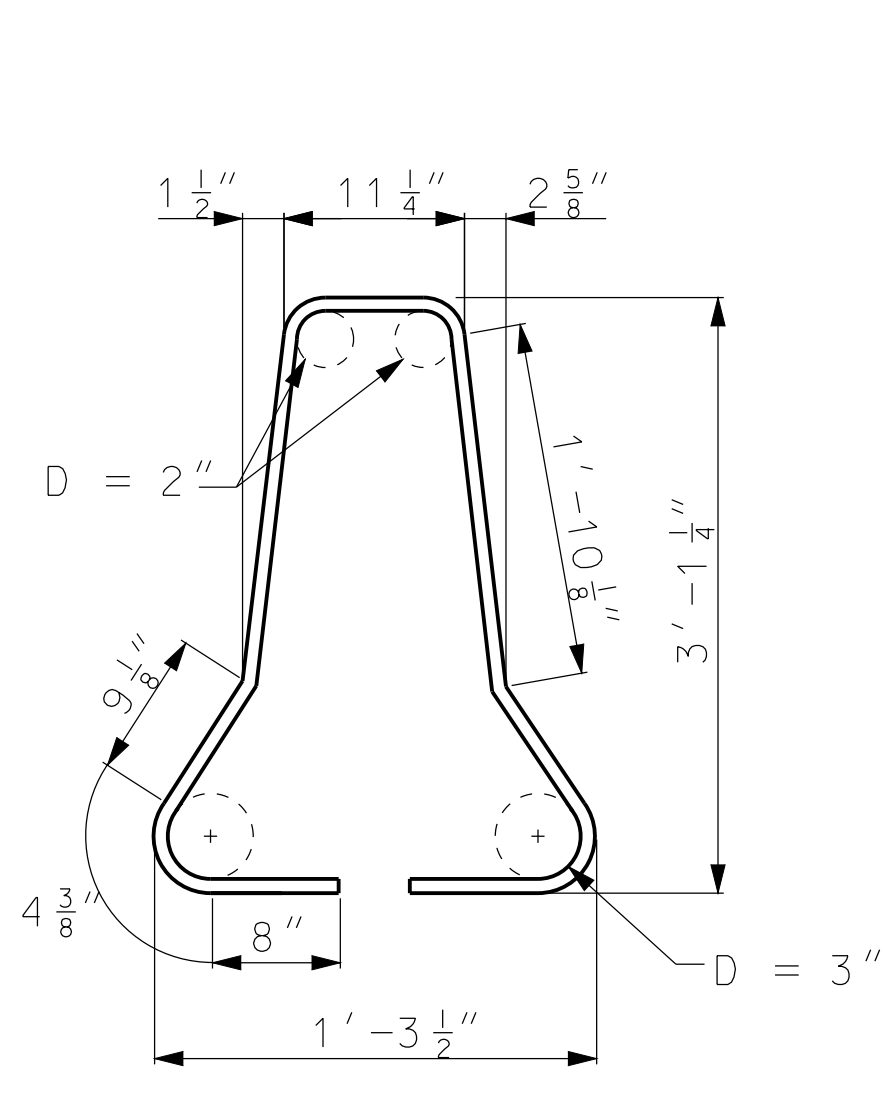
#4 A2 BAR



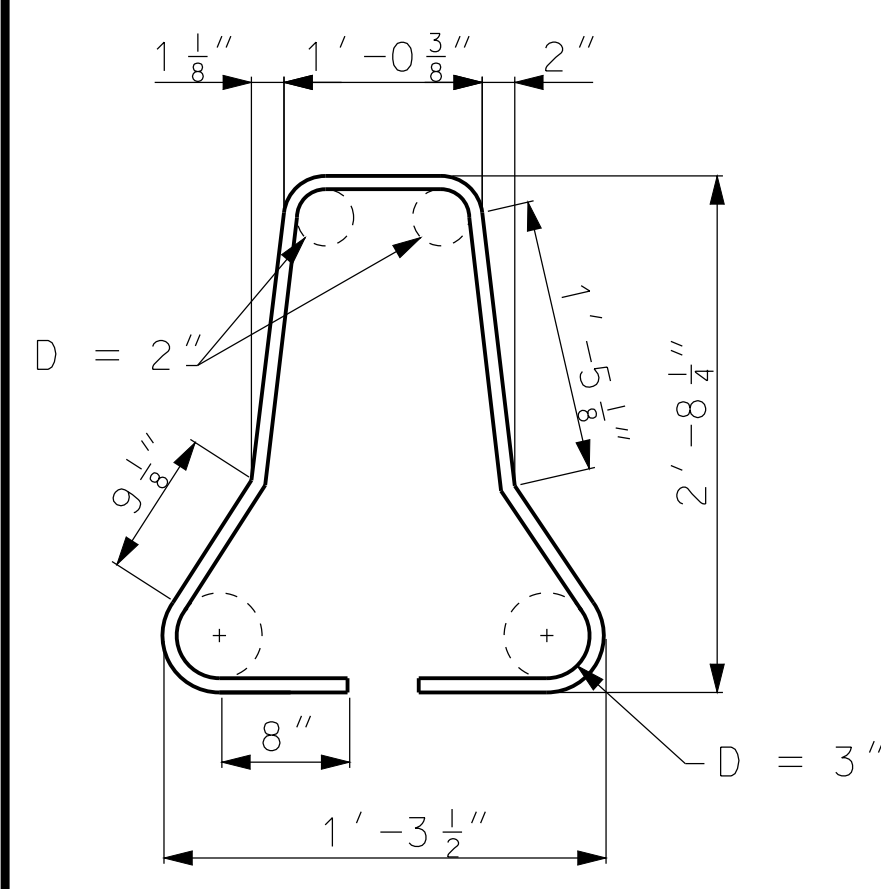
#4 A3 BAR



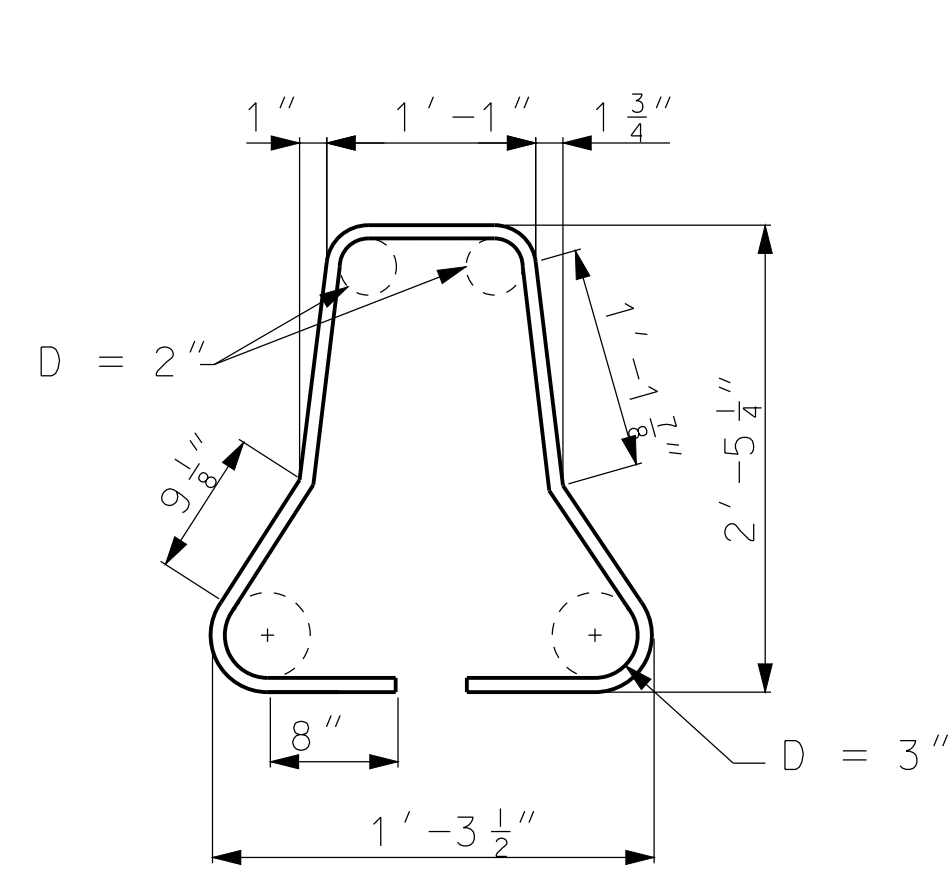
#4 A4 BAR



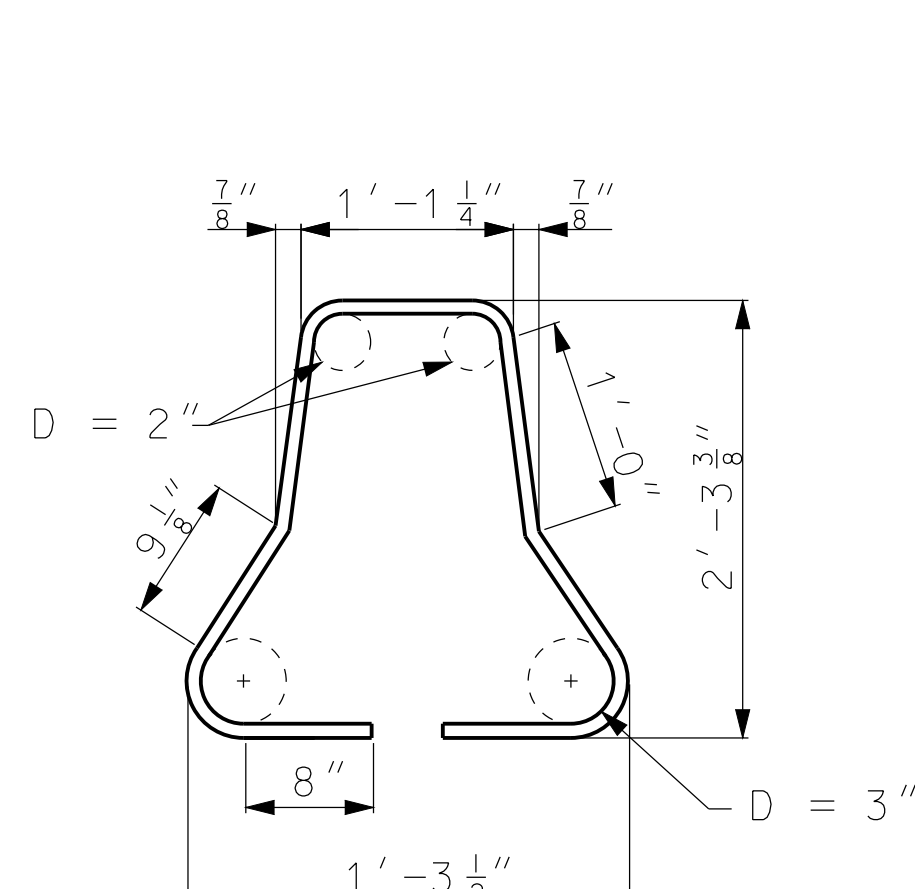
#4 A5 BAR



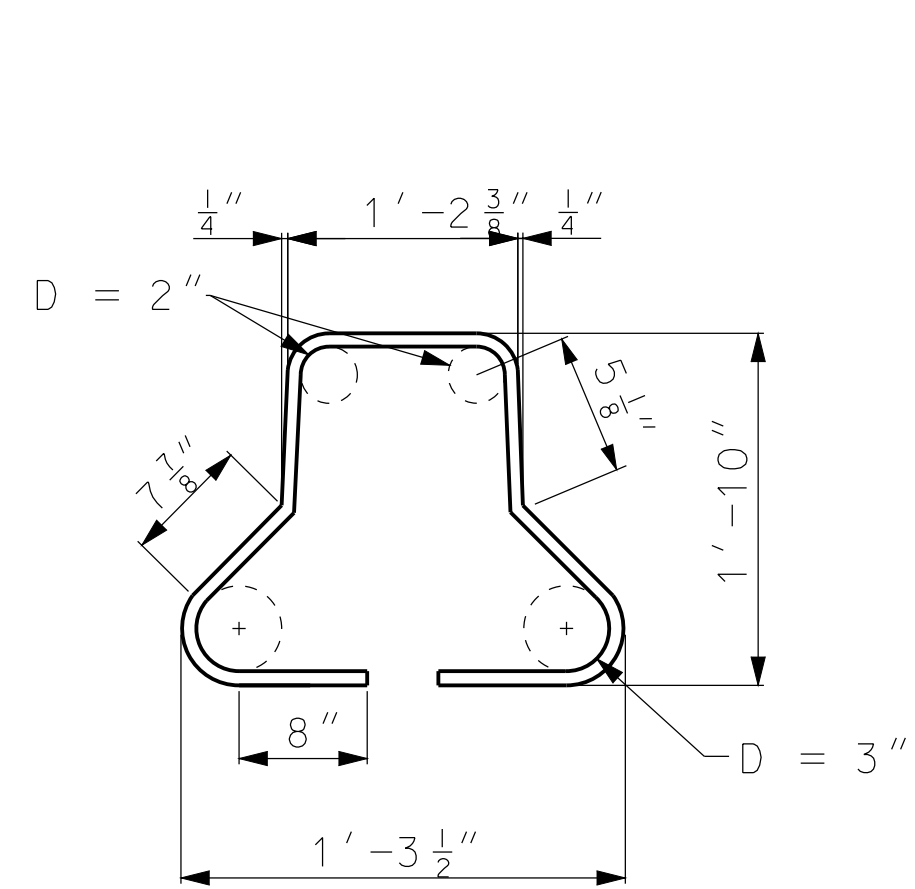
#4 A6 BAR



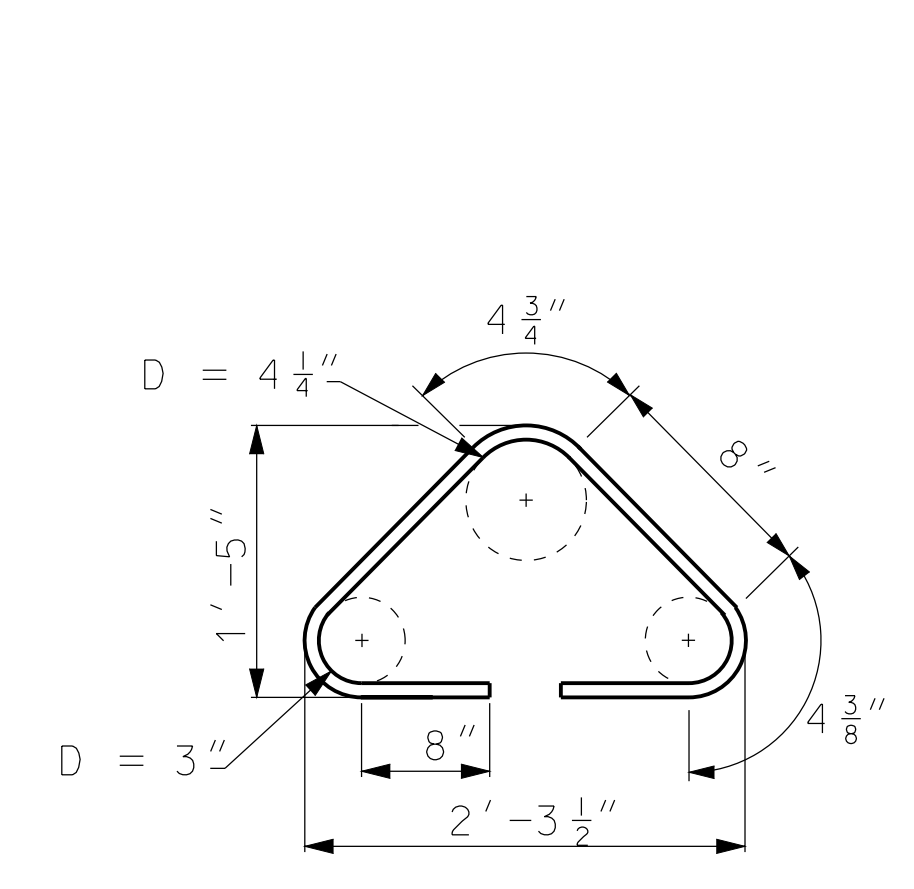
#4 A7 BAR



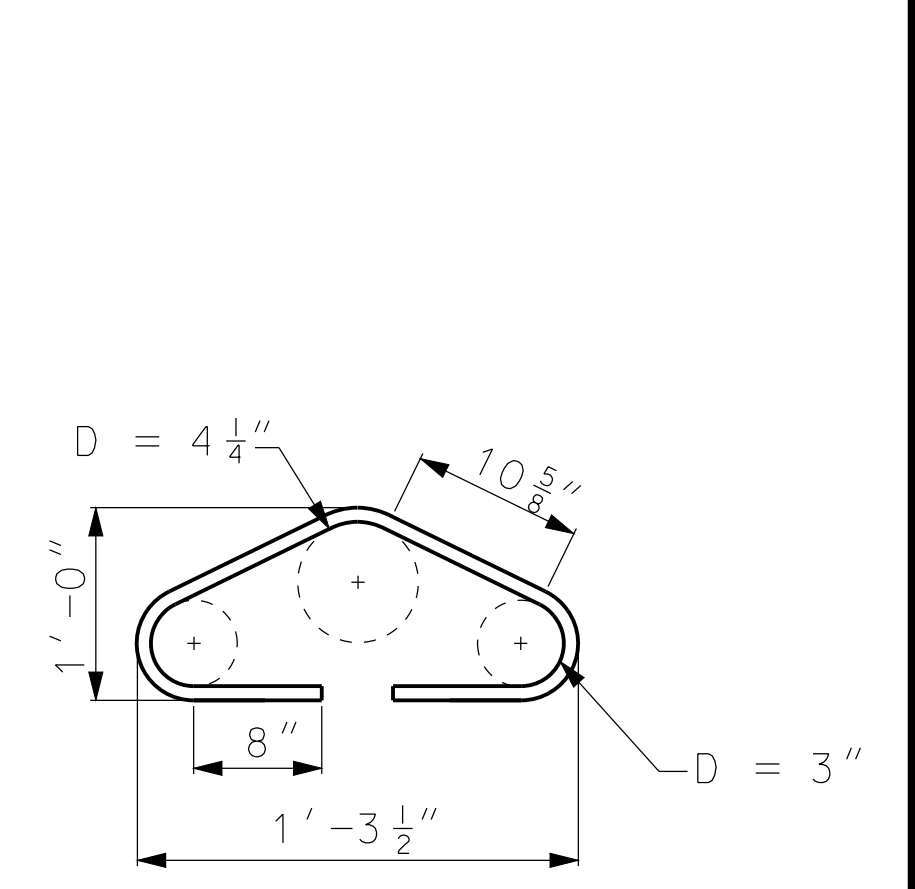
#4 A8 BAR



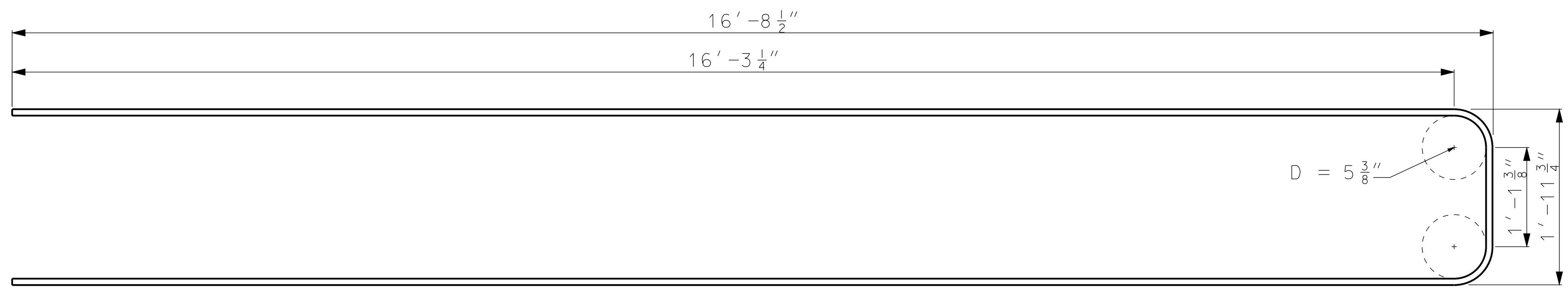
#4 A9 BAR



#4 A10 BAR



#4 A11 BAR



#5 J BAR

NOTE: FOR DETAILS OF B BARS, SEE SHEET 2 OF 6.

GENERAL NOTES:

DIMENSIONS ARE OUT TO OUT OF BARS UNLESS OTHERWISE NOTED.



**MISSOURI HIGHWAYS AND TRANSPORTATION COMMISSION**

105 WEST CAPITOL  
JEFFERSON CITY, MO 65102  
1-888-ASK-MODOT (1-888-275-6636)

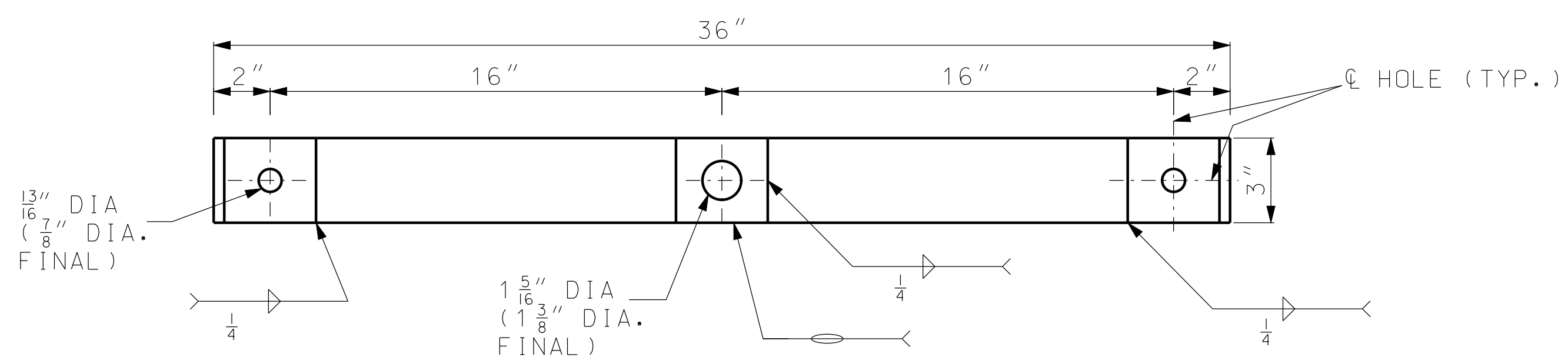
"THIS MEDIA SHOULD NOT BE CONSIDERED A CERTIFIED DOCUMENT."

**TEMPORARY CONCRETE TRAFFIC BARRIER TYPE F HEIGHT TRANSITIONS**

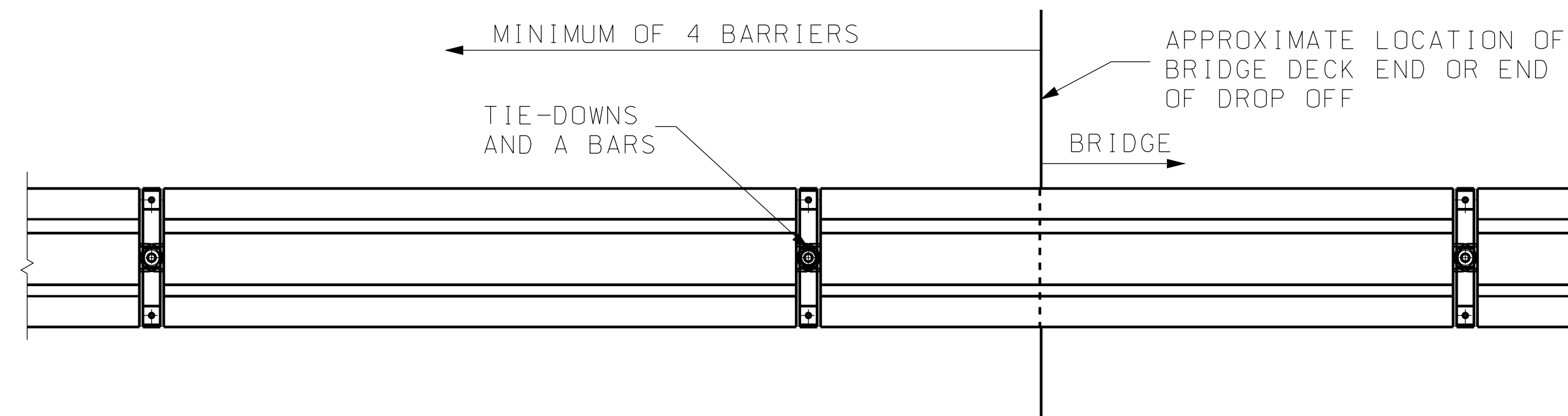
DATE EFFECTIVE: 06/01/2008  
DATE PREPARED: 8/21/2009

**617.20C**

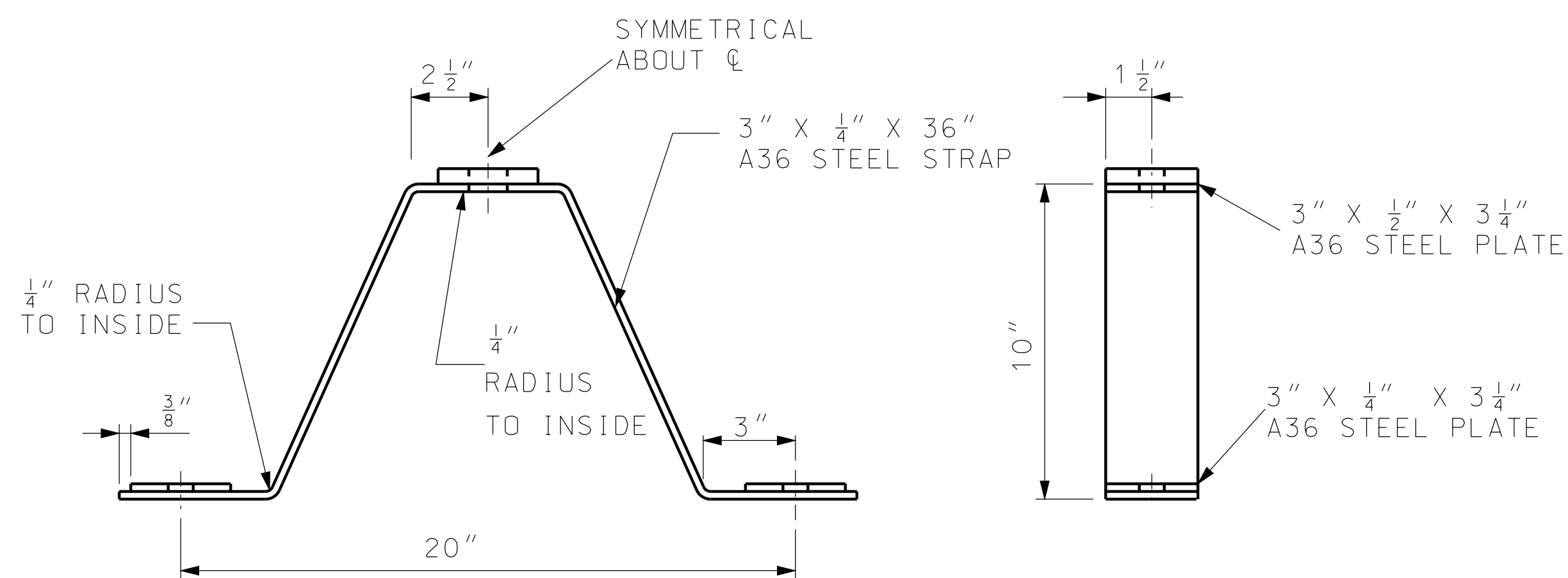
SHEET NO.  
4 OF 6



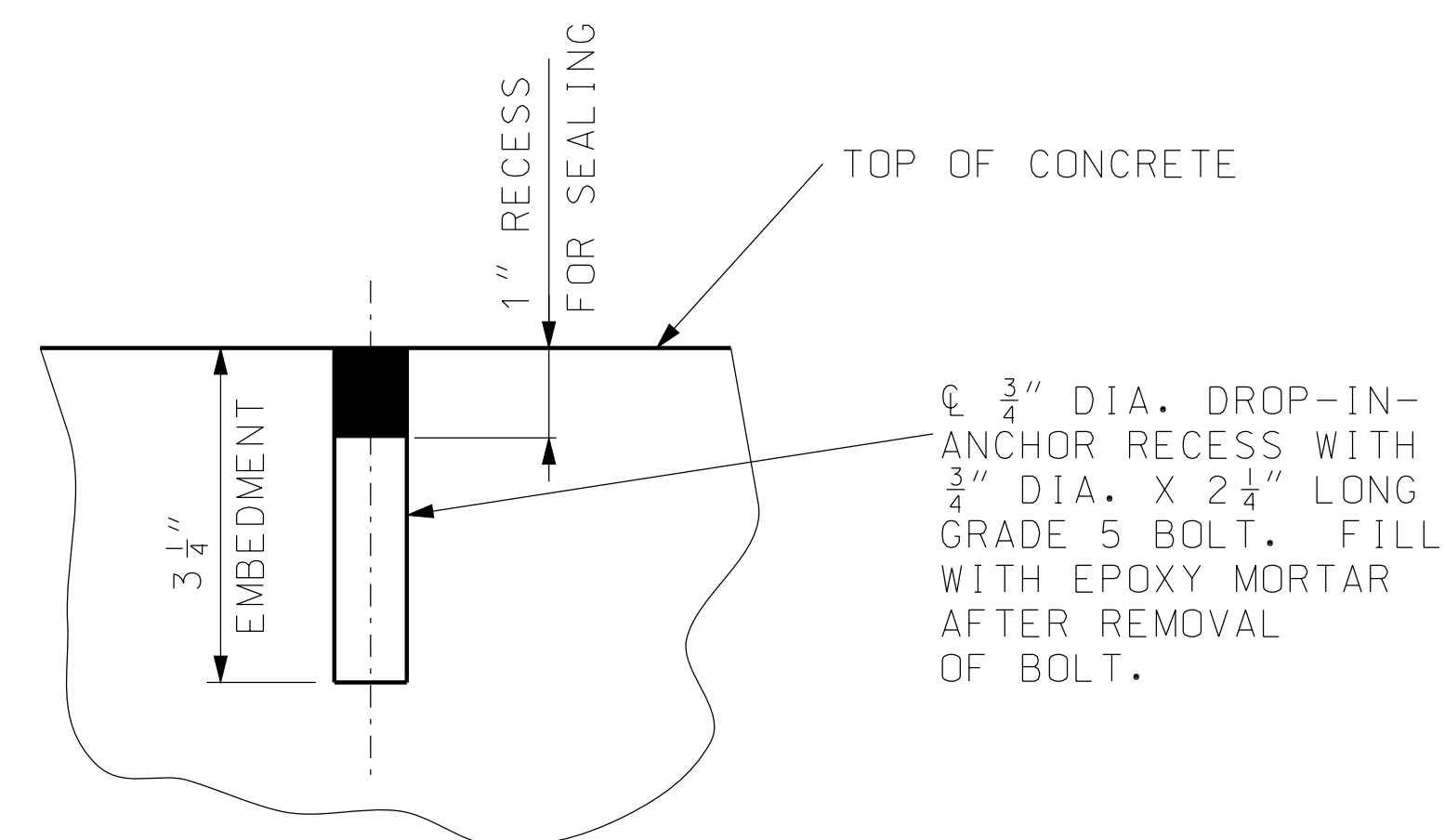
PLAN OF TIE-DOWN STRAP



PLAN OF TRANSITION FOR FREE-STANDING BARRIER TO TIE-DOWN BARRIER

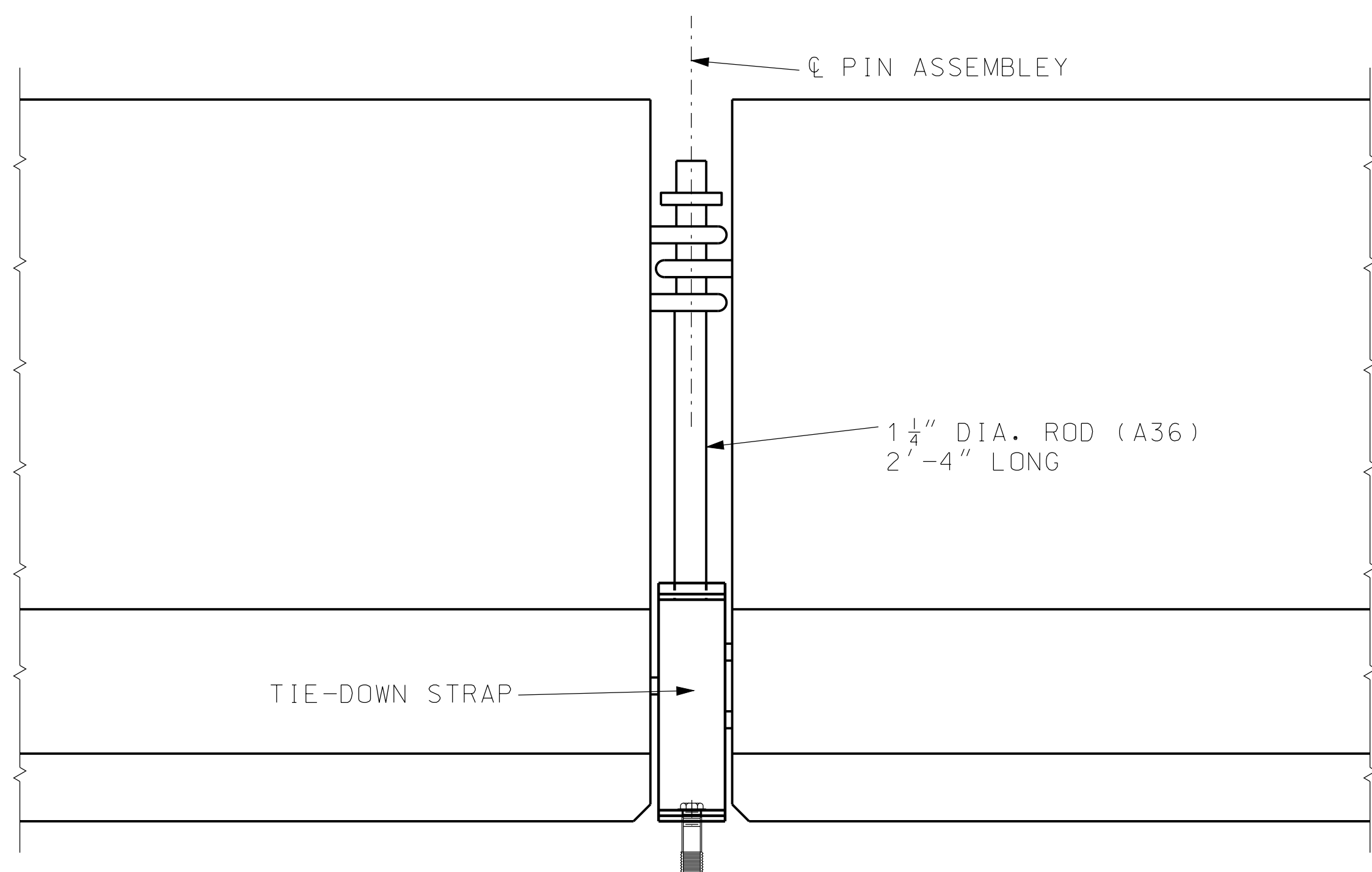


SIDE VIEW

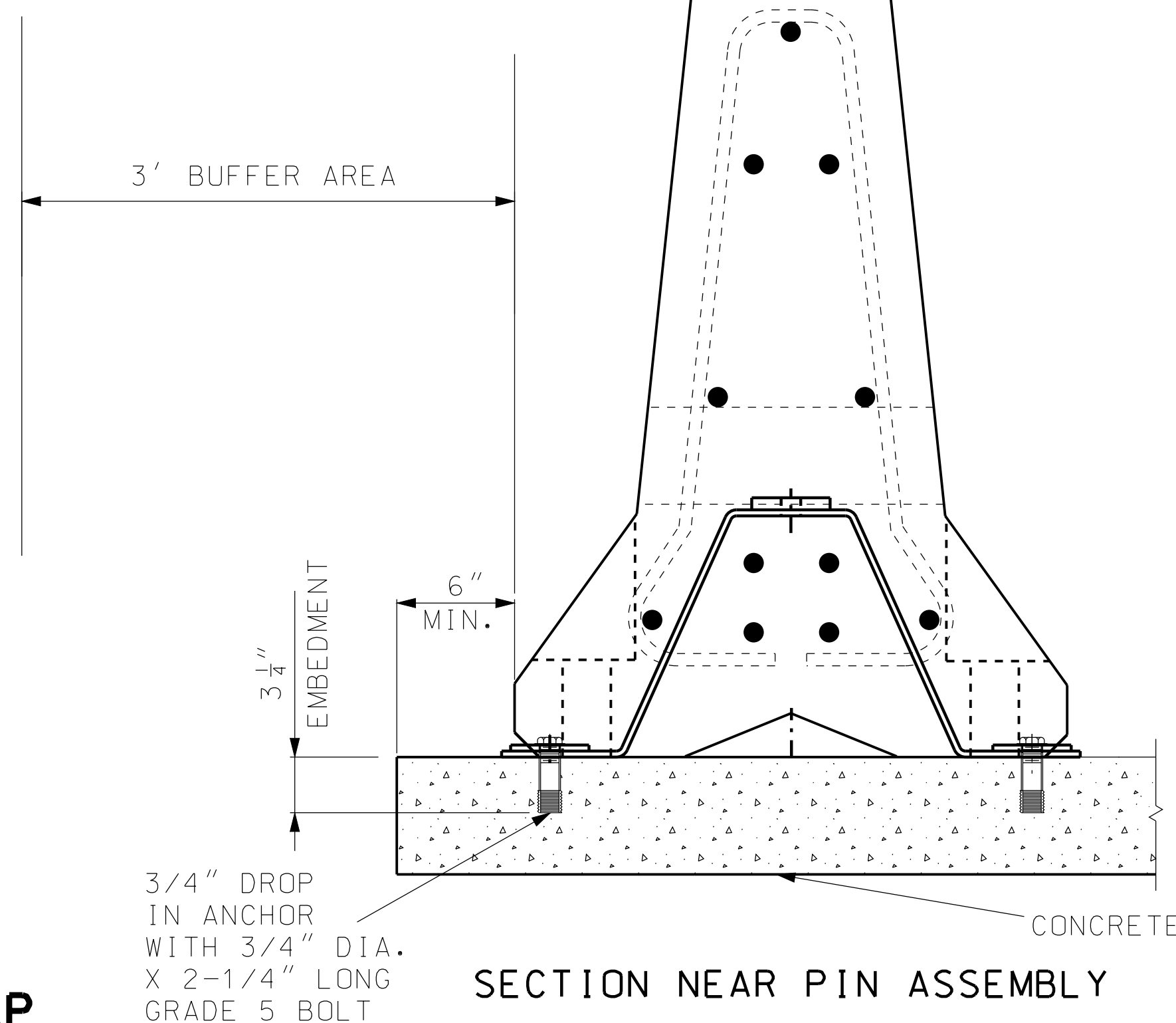


DETAIL SHOWING SEALING OF HOLES AFTER REMOVAL OF TIE-DOWN BOLTS

DETAILS OF TYPE F TEMPORARY BARRIER TIE-DOWN STRAP



PART ELEVATION OF TEMPORARY BARRIER



SECTION NEAR PIN ASSEMBLY

TIE-DOWN STRAP

GENERAL NOTES:

CONTRACTOR SHALL VERIFY ALL DIMENSIONS IN FIELD BEFORE ORDERING NEW MATERIAL.

COST OF FURNISHING AND INSTALLING THE TIE-DOWN SYSTEM COMPLETE-IN-PLACE WILL BE CONSIDERED INCIDENTAL TO OTHER PAY ITEMS.

SEE OTHER SHEETS FOR DETAILS NOT SHOWN.

TIE-DOWN STRAP: BARRIERS SHALL BE PULLED TIGHT DURING INSTALLATION TO REMOVE SLACK AND PROVIDE LONGITUDINAL TENSION DURING IMPACT.

**MoDOT** MISSOURI HIGHWAYS AND TRANSPORTATION COMMISSION  
 105 WEST CAPITOL JEFFERSON CITY, MO 65102  
 1-888-ASK-MODOT (1-888-275-6636)

"THIS MEDIA SHOULD NOT BE CONSIDERED A CERTIFIED DOCUMENT."

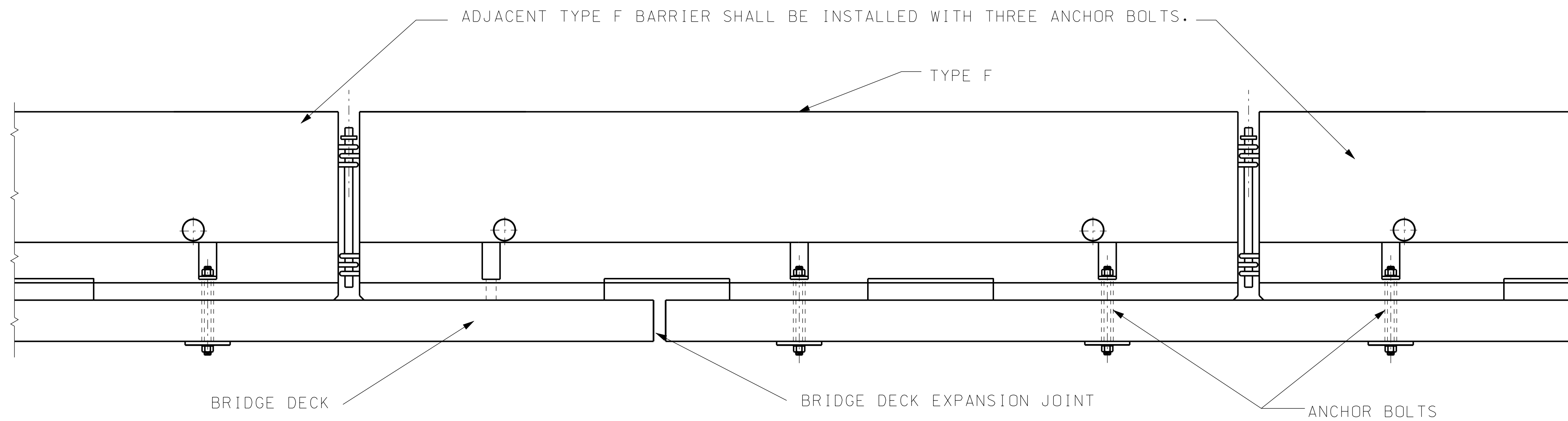
**TEMPORARY CONCRETE TRAFFIC BARRIER TIE-DOWN STRAP**

DATE EFFECTIVE: 06/01/2008  
 DATE PREPARED: 8/21/2009

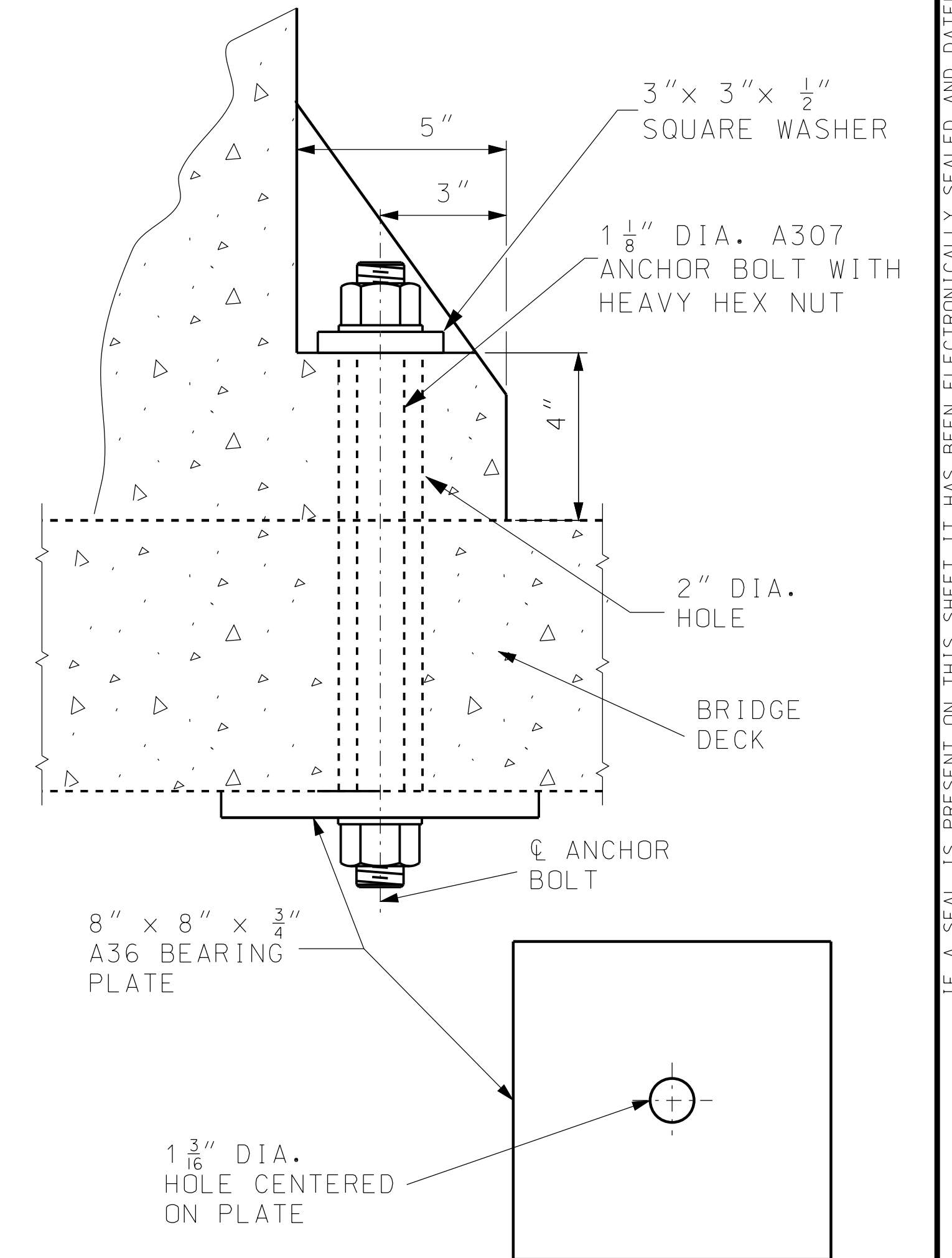
**617.20C**

SHEET NO. 5 OF 6

IF A SEAL IS PRESENT ON THIS SHEET IT HAS BEEN ELECTRONICALLY SEALED AND DATED.



**BOLT THROUGH DECK AT THERMAL EXPANSION JOINTS**



**BOLT THROUGH DECK DETAIL**

**GENERAL NOTES:**

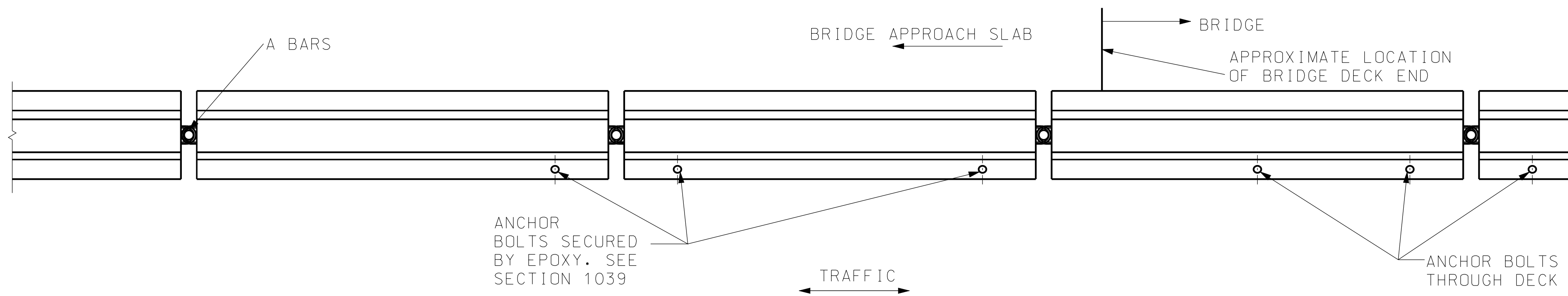
CONTRACTOR SHALL VERIFY ALL DIMENSIONS IN FIELD BEFORE ORDERING NEW MATERIAL.

COST OF FURNISHING AND INSTALLING THE ANCHOR SYSTEM COMPLETE-IN-PLACE WILL BE CONSIDERED INCIDENTAL TO OTHER PAY ITEMS.

SEE OTHER SHEETS FOR DETAILS NOT SHOWN.

TRANSITION FROM FREE-STANDING BARRIER TO BARRIER WITH ANCHOR BOLTS.

EPOXY SHALL BE 6K PSI AND APPLIED ACCORDING TO MANUFACTURER'S SPECIFICATIONS.



**PLAN OF TRANSITION FOR BRIDGE DECK FROM FREE-STANDING TYPE F TO TYPE F WITH ANCHOR BOLT**

**MoDOT** MISSOURI HIGHWAYS AND TRANSPORTATION COMMISSION

105 WEST CAPITOL  
JEFFERSON CITY, MO 65102  
1-888-ASK-MODOT (1-888-275-6636)

"THIS MEDIA SHOULD NOT BE CONSIDERED A CERTIFIED DOCUMENT."

**TEMPORARY CONCRETE TRAFFIC BARRIER ANCHORING SYSTEMS**

DATE EFFECTIVE: 06/01/2008	<b>617.20C</b>	SHEET NO.
DATE PREPARED: 8/21/2009		6 OF 6

IF A SEAL IS PRESENT ON THIS SHEET IT HAS BEEN ELECTRONICALLY SEALED AND DATED.