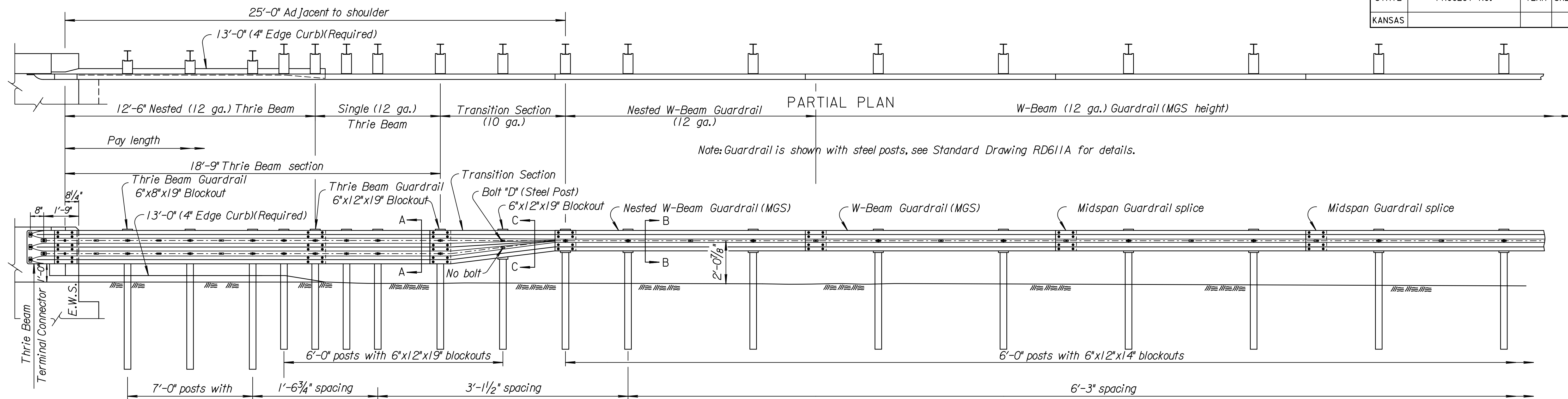
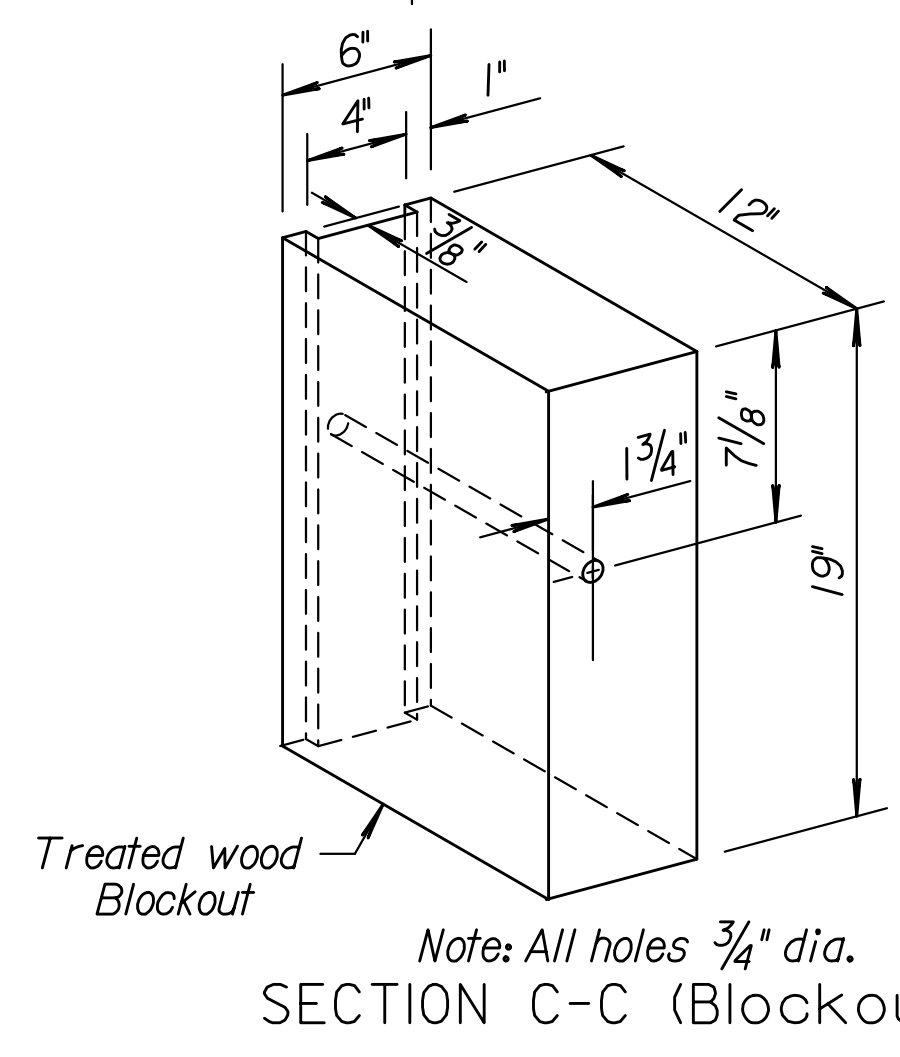
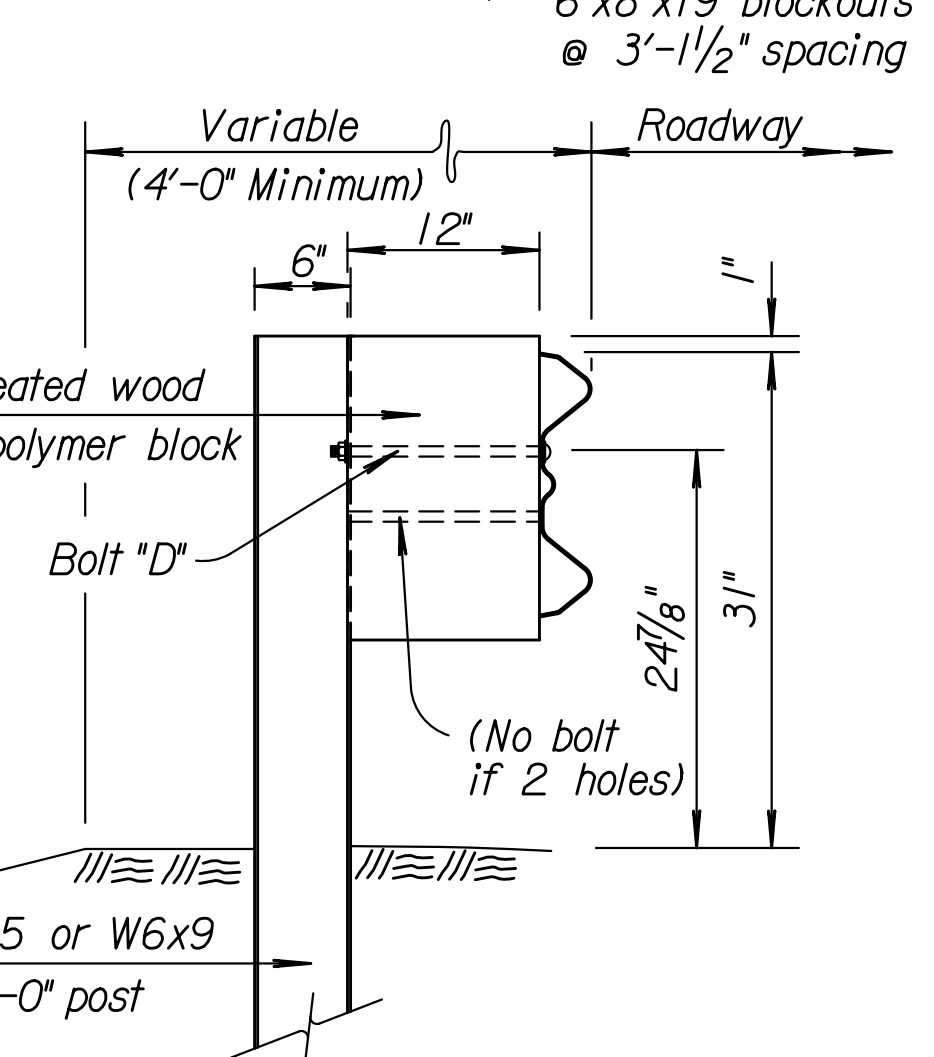


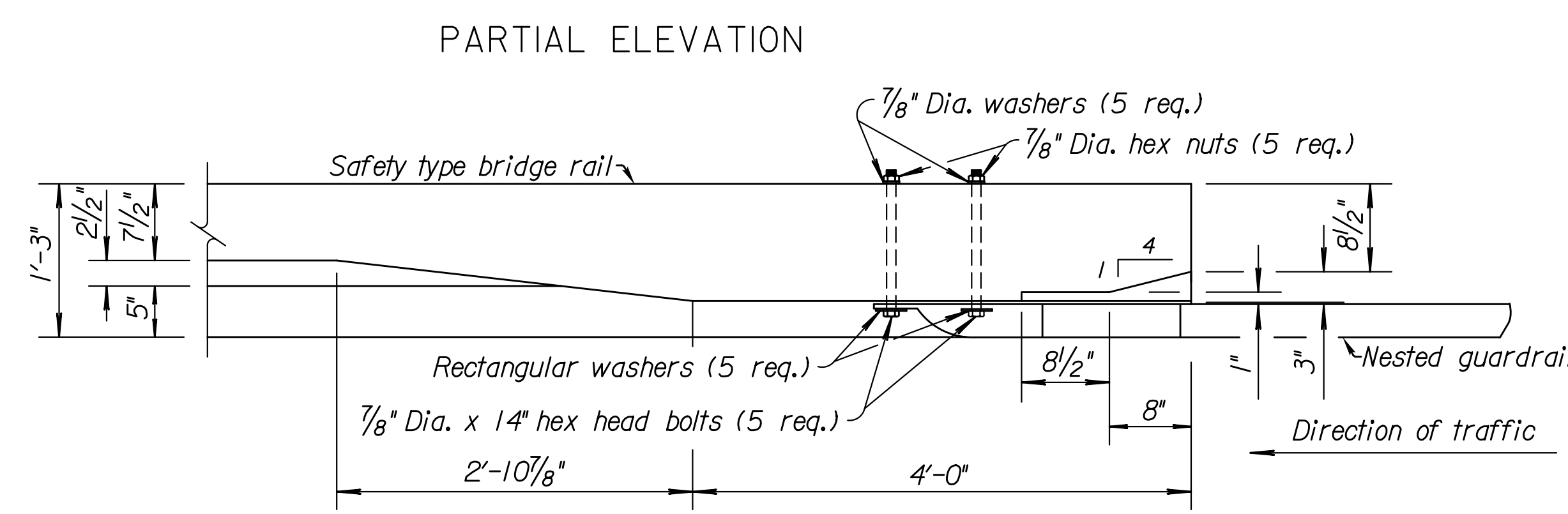
STATE	PROJECT NO.	YEAR	SHEET NO.	TOTAL SHEETS
KANSAS				



Note: Guardrail is shown with steel posts, see Standard Drawing RD611A for details.

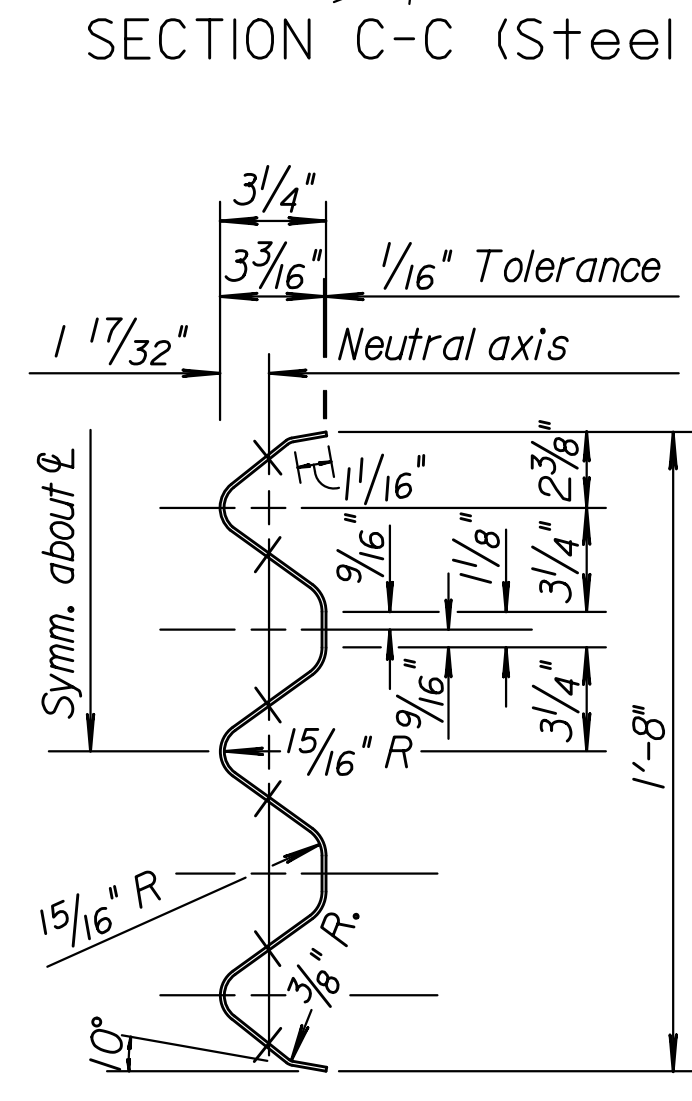


Note: All holes 3/4" dia.

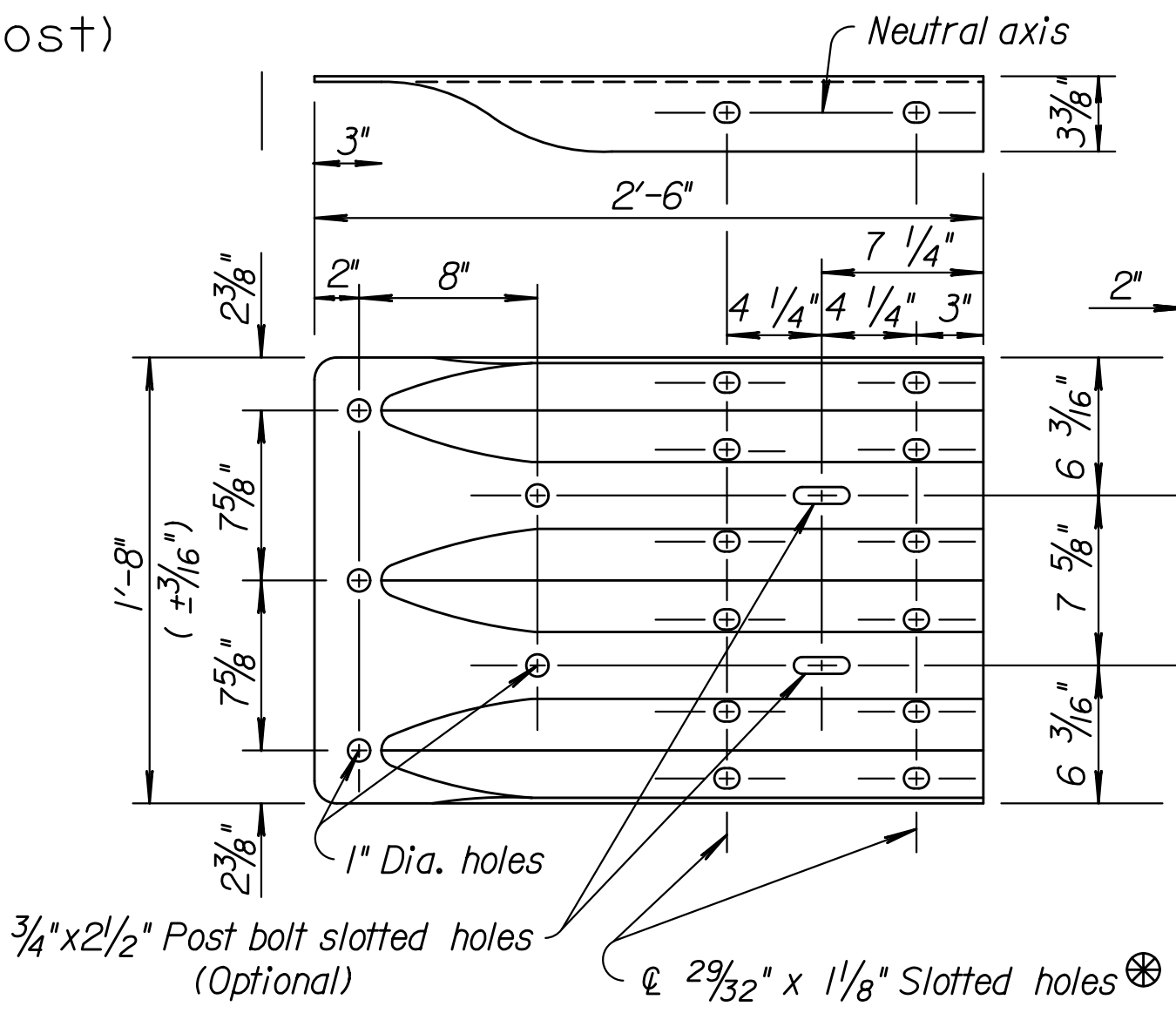


PLAN VIEW GUARDRAIL ATTACHMENT TO SAFETY SHAPE BRIDGE RAIL

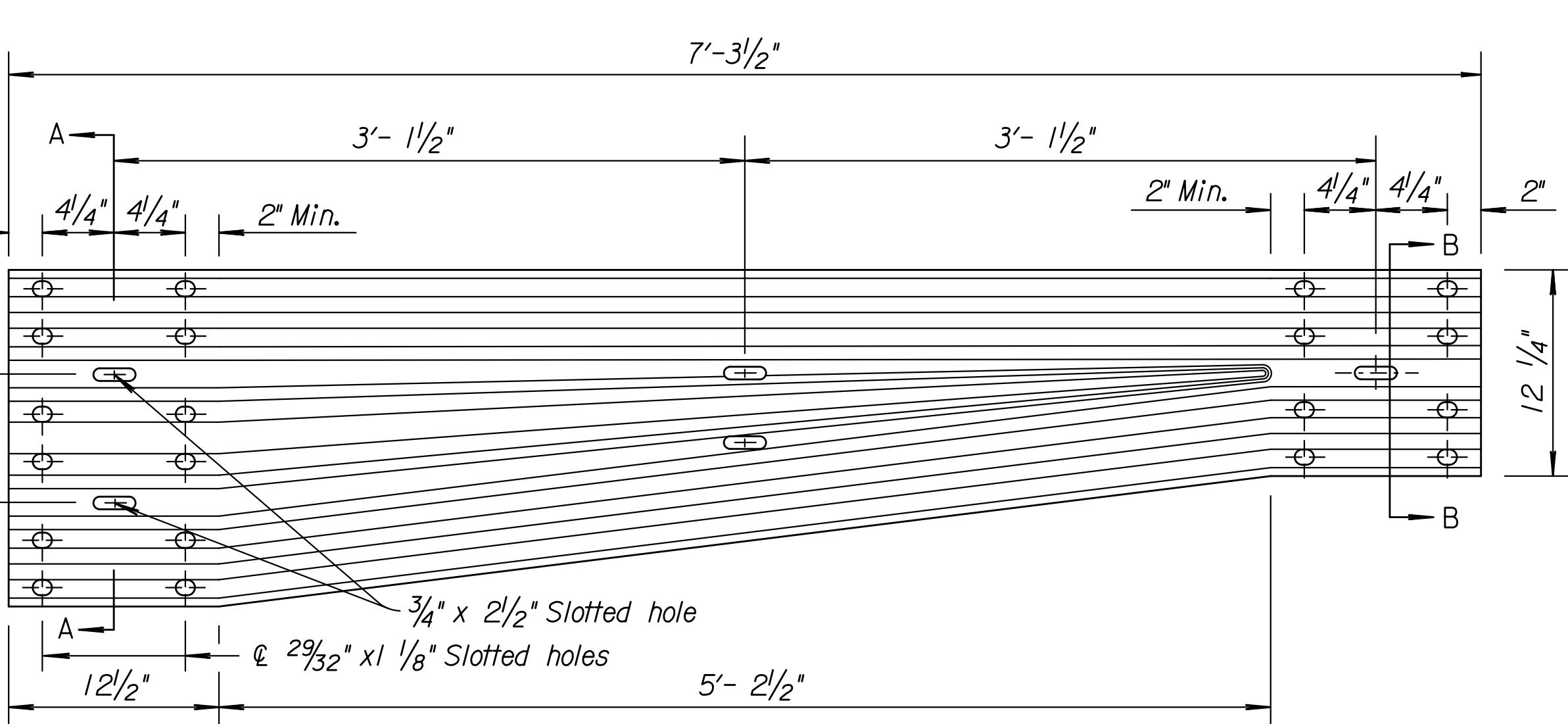
**GENERAL NOTE**  
 Use galvanized 12 gauge steel rail elements unless otherwise noted.  
 Use galvanized anchor bolts and post rail fittings, see Standard Specifications regardless of source or manufacturer.  
 Fabricate Terminal Connector from 10 gauge steel, see Standard Specification. The connector has the same section as thrie beam guardrail. Terminal connector is subsidiary to the bid item "Guardrail, Steel Plate".  
 Shop curve rails when radius is less than 150'.  
 Lap guardrail splices, including terminal connector, in the direction of traffic. Where traffic is temporarily carried in the opposite direction of final configuration, lap rail splices in the direction of permanent traffic.  
 Bridge to guardrail transition consists of 1- 18'-9" thrie-beam with 1- 12'-6" thrie-beam section nested in back of 18'-9" section (See Layout), 1- Thrie beam to W-beam Asymmetrical transition section, use associated hardware with post sizes and location shown. For the remainder of installation use (MGS) W-beam guardrail with only one post/blockout type used within (MGS) guardrail run.  
 All material and work required for this construction are included in the bid item "Guardrail, Steel Plate".



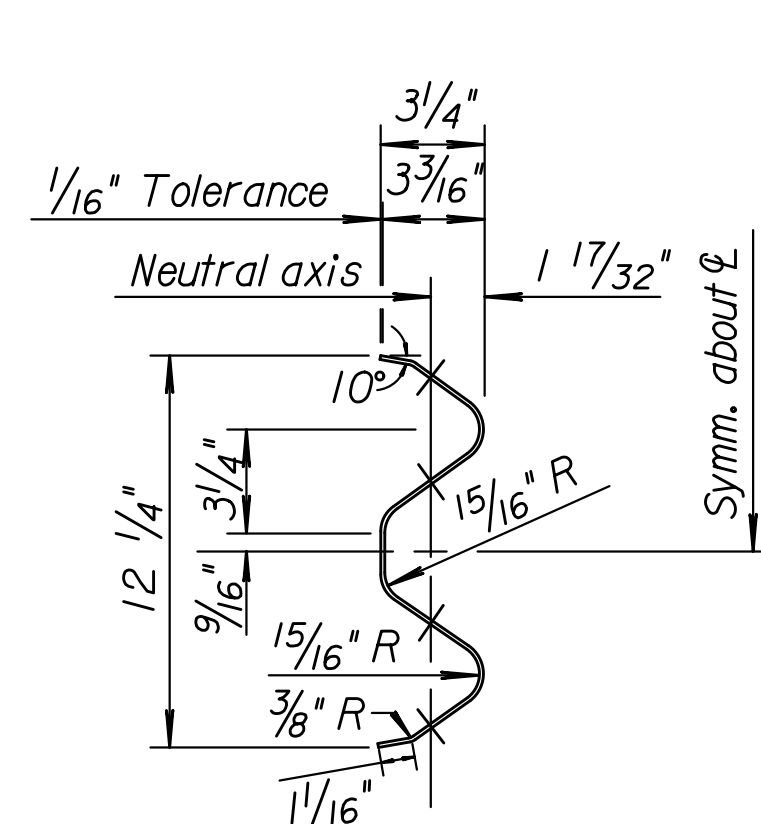
SECTION A-A THRU RAIL ELEMENT TYPICAL THRIE BEAM



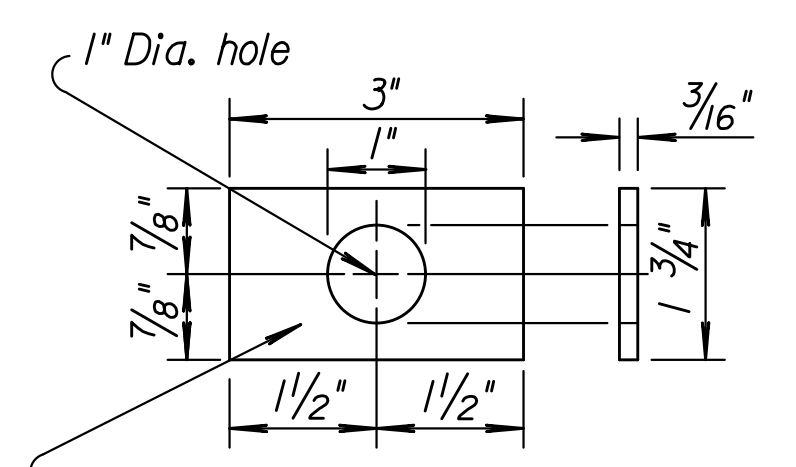
TERMINAL CONNECTOR  
 Optional 2 9/32" x 1 3/4" Slotted holes Rotated 50° (Typical) (12 req'd.)



ELEVATION ASYMMETRICAL TRANSITION SECTION (From Thrie Beam to W-Beam rail)



SECTION B-B THRU RAIL ELEMENT TYPICAL W-BEAM



RECTANGULAR WASHER (Other approved washer may be used.)

Drawn By: tfrroads  
 File: rd613a.dgn  
 Plotted: 25-NOV-2014 09:07

KANSAS DEPARTMENT OF TRANSPORTATION				
2				
1	1-25-12	Revised Details, Thrie-Beam	S.W.K.	J.O.B.
NO.	DATE	REVISIONS	BY	APP'D
KANSAS DEPARTMENT OF TRANSPORTATION				
RD613A				
DESIGNED	4-25-12	APP'D.	James O. Brewer	
DESIGN CK.	DETAIL CK.	QUANTITIES	TRACED	Bowser
		QUAN.CK.	TRACE CK.	King
KDOT Graphics Certified 11-25-2014				

KDOT Graphics Certified