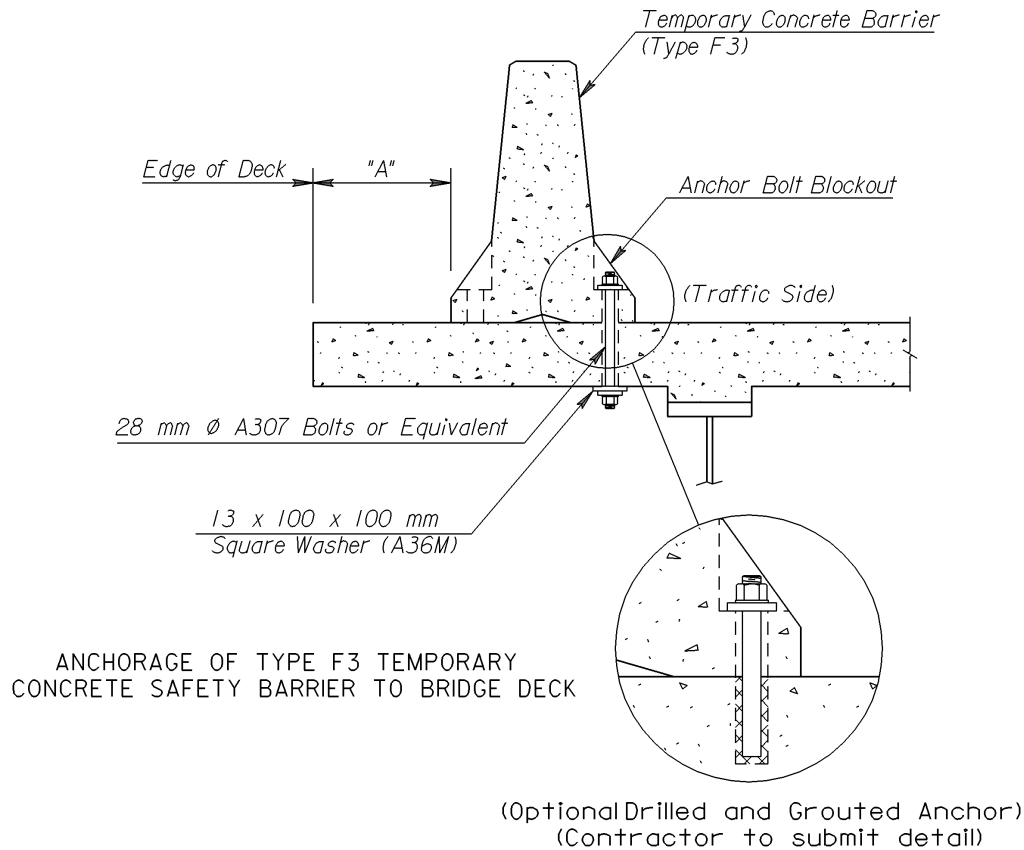


Figure 3.2.10-5a2 Anchorage of Type F3 Temporary Safety Barrier to Bridge Deck



When "A" is < 600 mm:

- 1) Use Type F3 Barrier (Std. No. RD642 SI).
- 2) Anchor each 3.81 m Barrier unit to the bridge deck by three bolts on the traffic side.)

When "A" is ≥ 600 mm < 1200 mm:

- 1) Use Type F3 Barrier.
- 2) Anchor each pin and loop connection to the bridge deck with the strap connector. As an option, unless otherwise noted on the plans, the contractor may anchor each 3.81 m Barrier unit to the bridge deck by three bolts on the traffic side.

When "A" is ≥ 1200 mm:

- 1) Use Type F3 Barrier.
- 2) Anchorage to bridge deck is not required, unless otherwise noted in the plans.