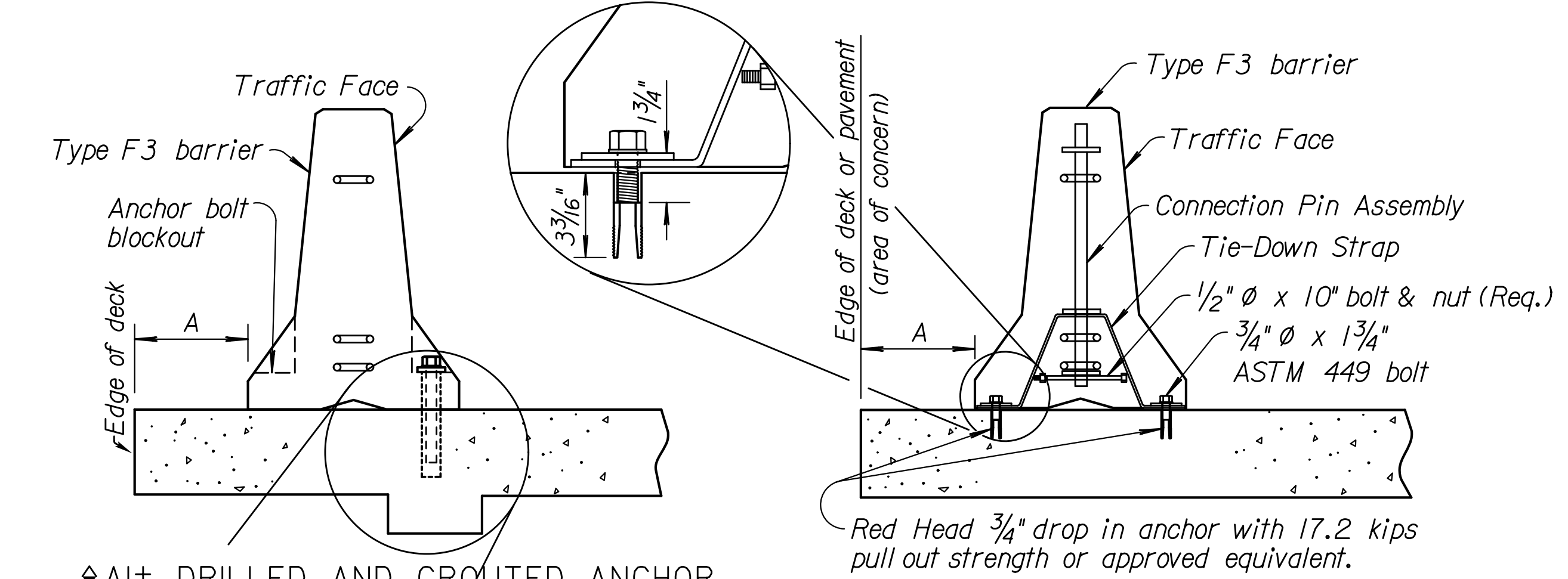
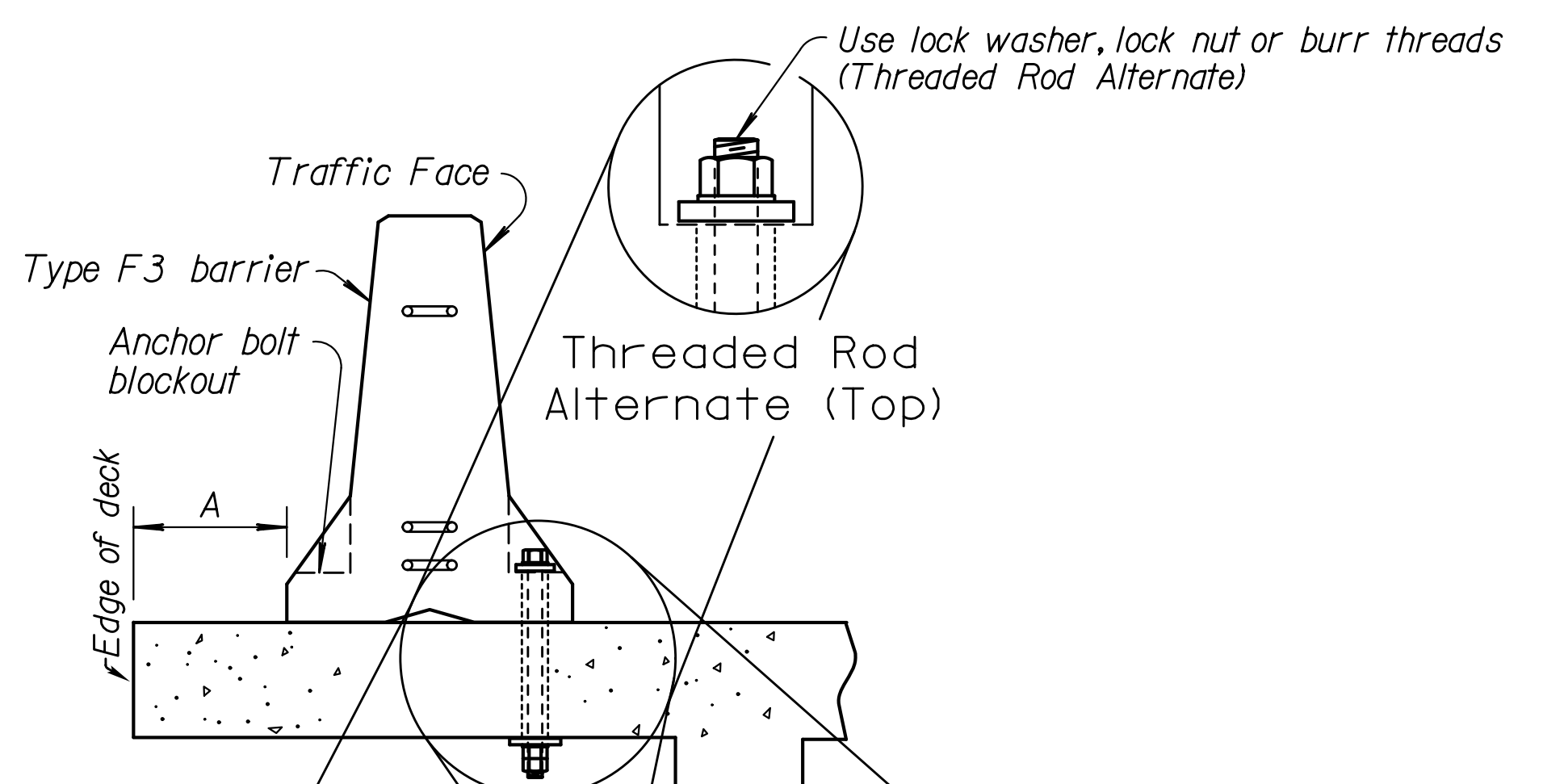


STATE	PROJECT NO.	YEAR	SHEET NO.	TOTAL SHEETS
KANSAS				

Option	BRIDGE DECK APPLICATION	
1 B	$0' \leq A < 2'$	Anchor each barrier with 3 bolts on traffic face
2 B	$\Delta 2' \leq A < 4'$	Anchor with Tie-down strap connector
3 B	$A \geq 4'$	No anchorage required unless shown on plans

Option	ROAD PAVEMENT APPLICATION	
1 R	$0' \leq A < 2'$	Anchor each barrier with 3-bolts on traffic face
2 R	$6' \leq A < 2'$	Anchor with Tie-down Strap or Staked Down (flexible)
3 R	$A \geq 2'$	No anchorage required

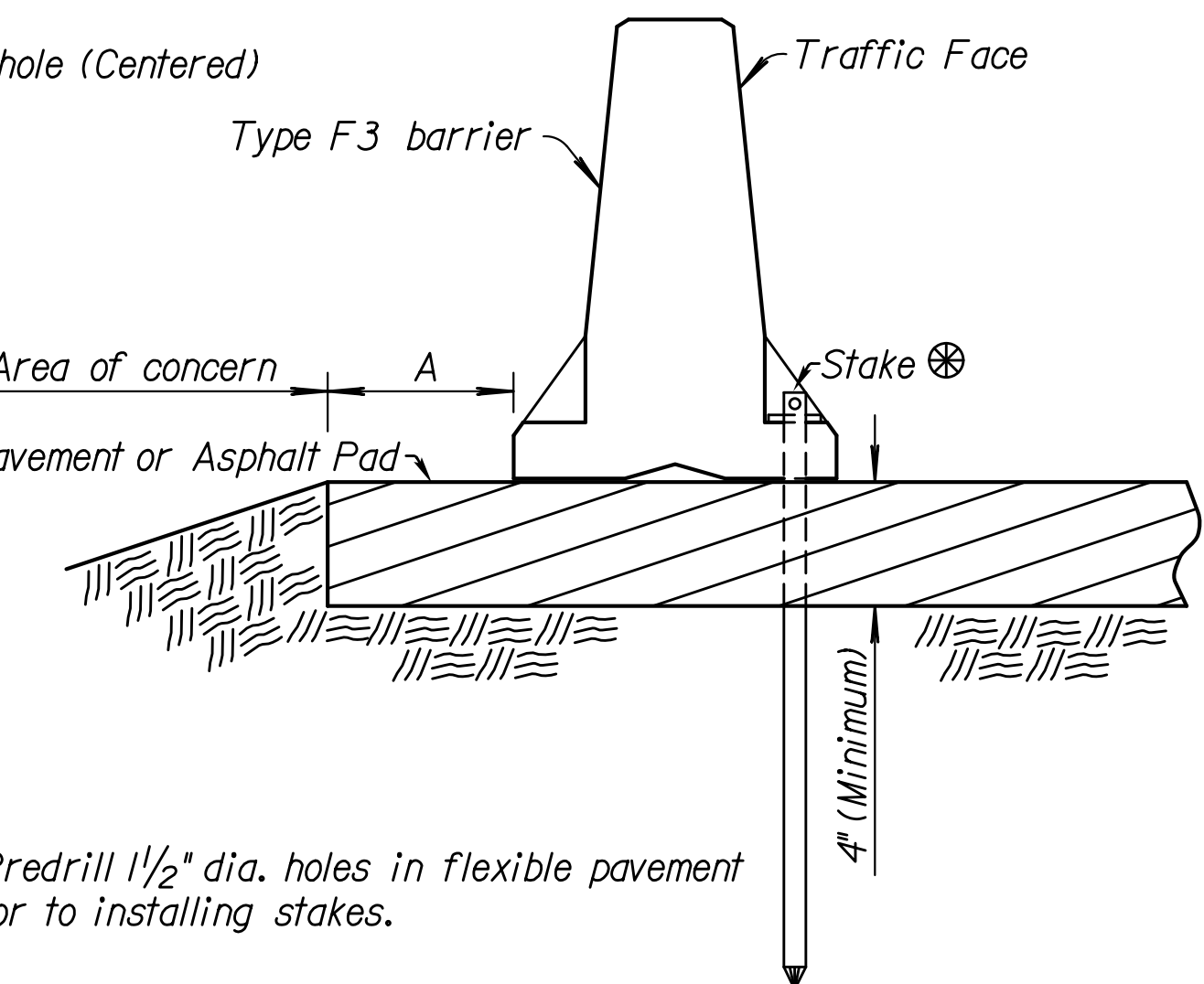
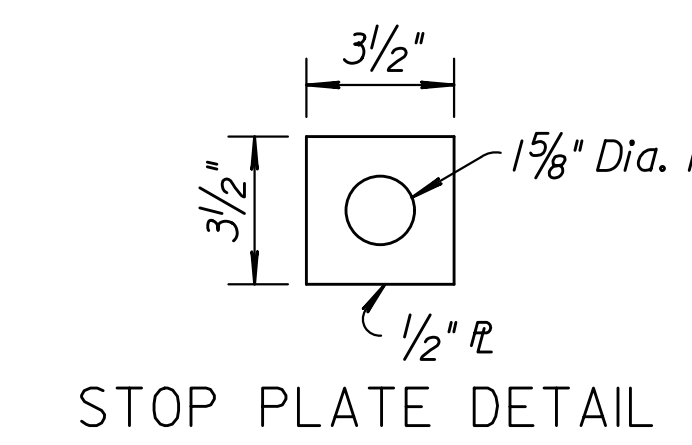
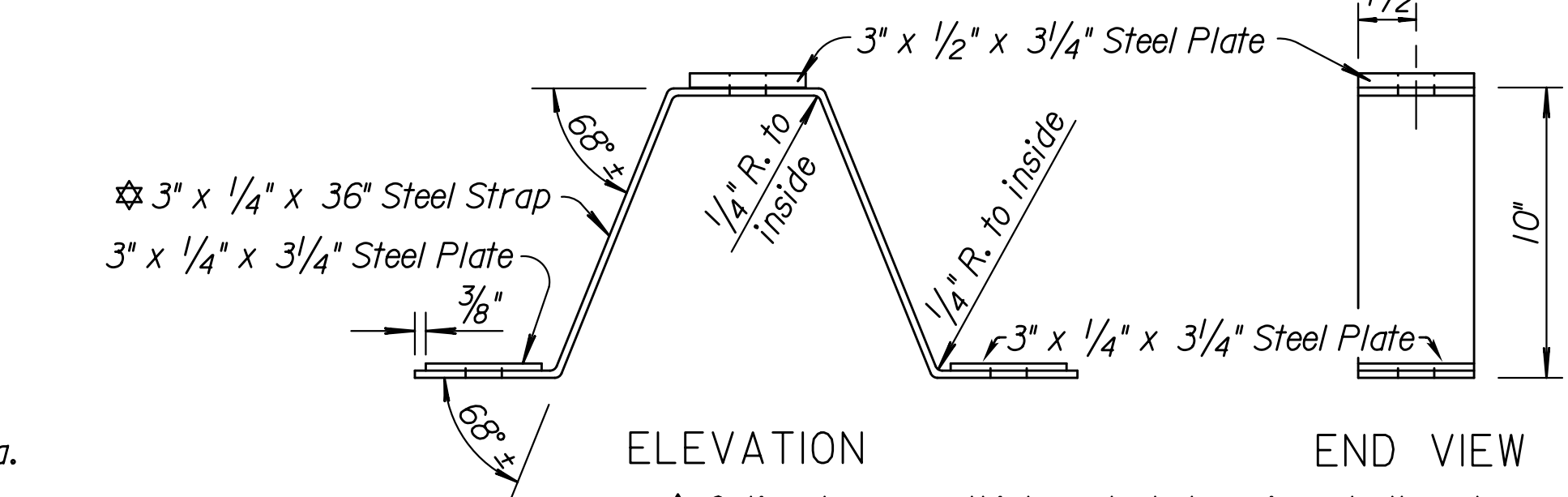
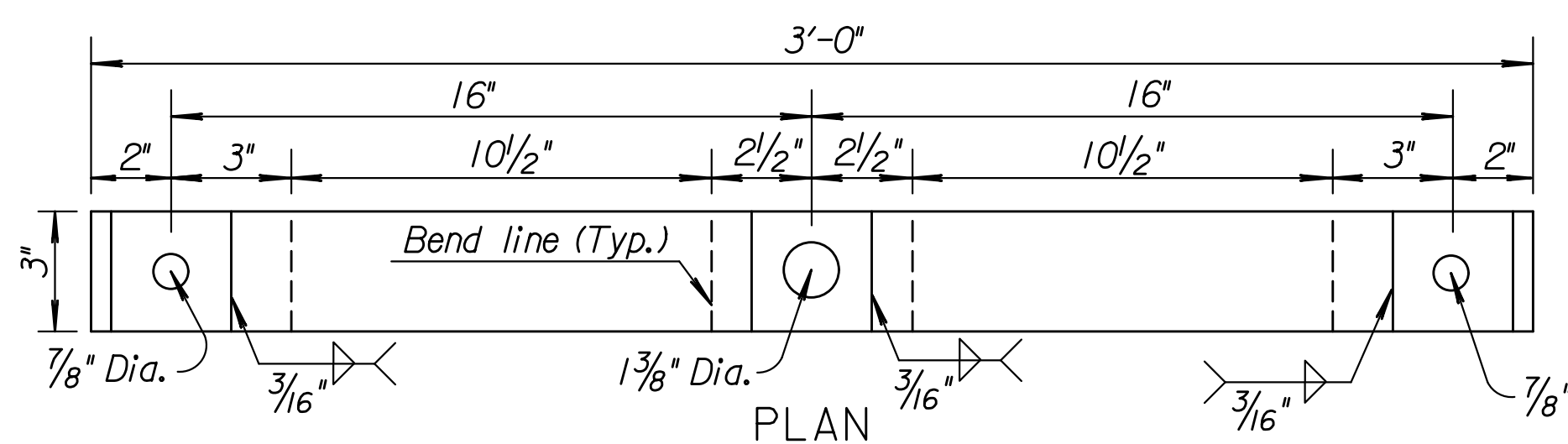
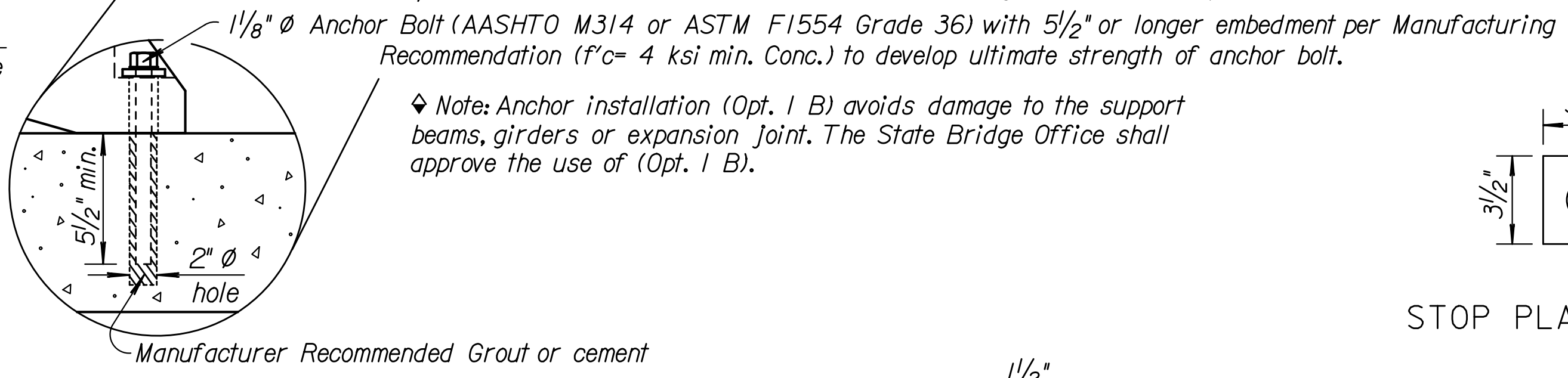
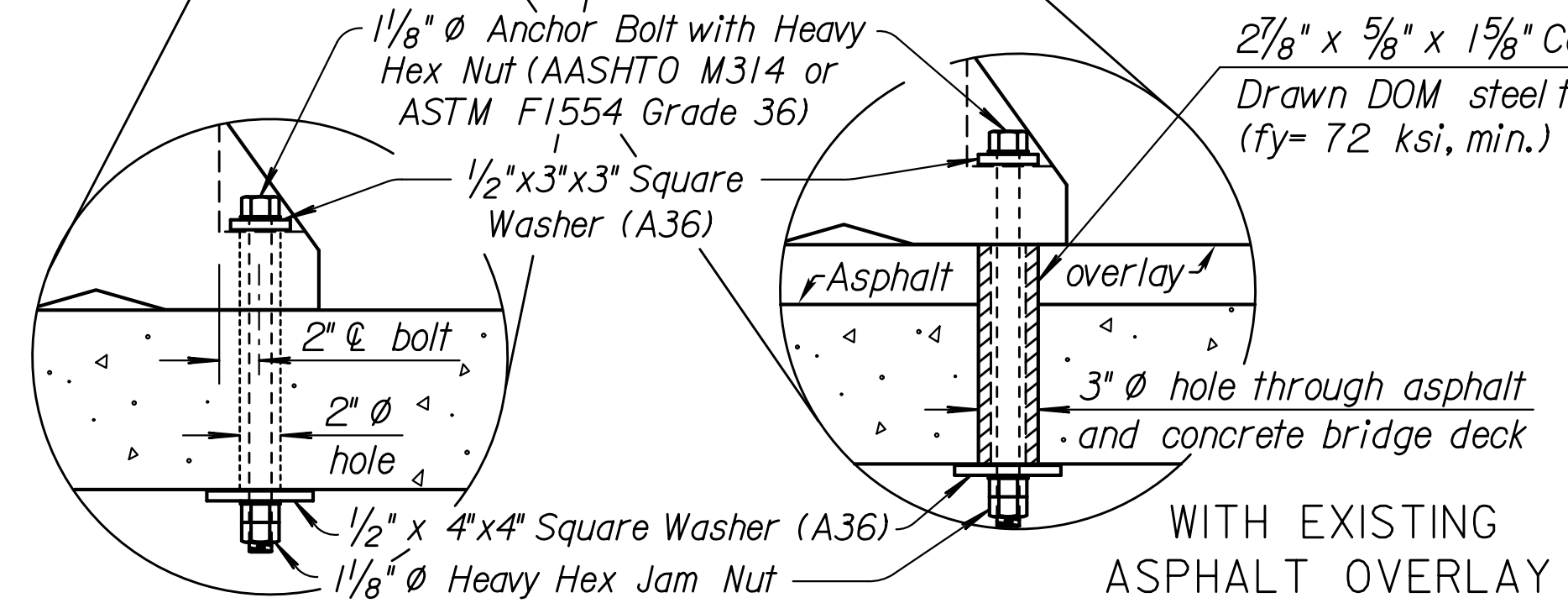
Δ This dimension may be reduced to 1' on a newly constructed Bridge Deck.
 Note: BRIDGE APPLICATION (Opt. 1 B) may be used in lieu of (Opt. 2 B) with prior approval from the State Bridge Office.



THROUGH BOLT (Preferred)
Install on Bridge Deck (Opt. 1B)

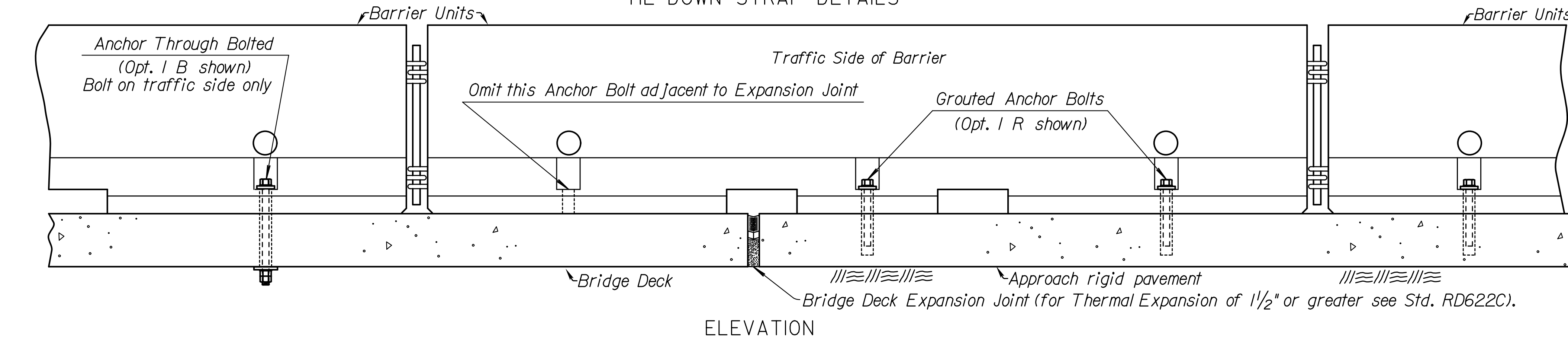
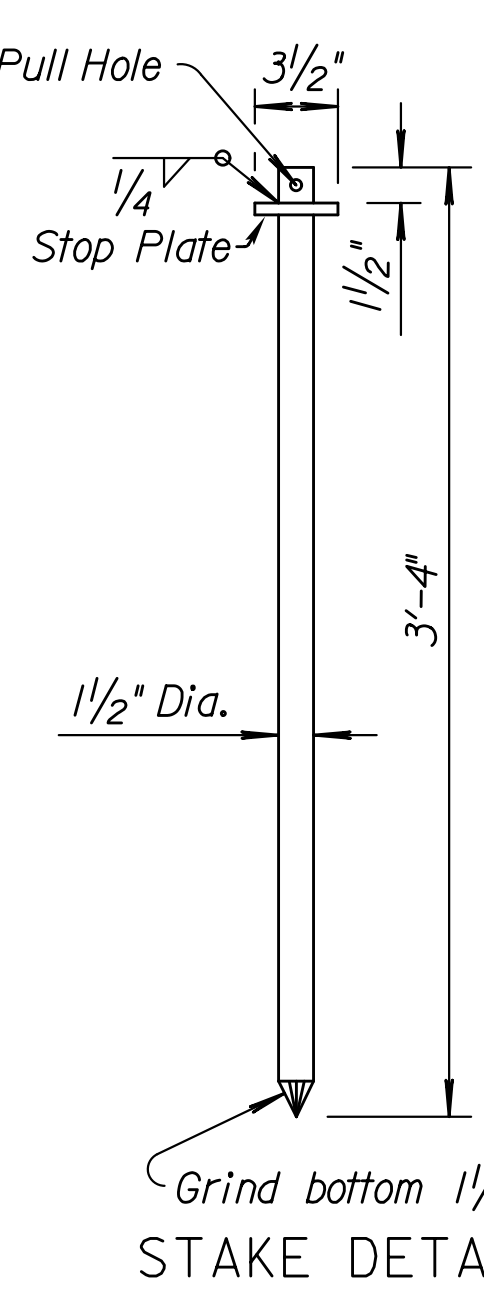
Alt. DRILLED AND GROUTED ANCHOR
Bridge Deck (Opt. 1B)
or Rigid Pavement (Opt. 1R)

TIE-DOWN STRAP
Rigid Pavement (Opt. 2 R) or
Bridge Deck (Opt. 2 B)



FLEXIBLE PAVEMENT ROAD APPLICATION
ELEVATION - STAKED DOWN (Opt. 2 R)

Note: See Std. Drawing No. RD622 for details and quantities not shown on this sheet.



TREATMENT AT BRIDGE DECK EXPANSION JOINT SCHEMATIC (Expansion $< 1 1/2"$)

NO.	DATE	REVISIONS	BY	APP'D
5	6-27-11	Revised General Note	S.W.K.	J.O.B.
4	9-14-10	Add. through bolt with asphalt over.	S.W.K.	J.O.B.
3	2-2-10	Rev. Anchor to Tie-down callout	S.W.K.	J.O.B.
2	10-2-07	Rev. anchor bolt call-out	S.W.K.	J.O.B.

KANSAS DEPARTMENT OF TRANSPORTATION			
TEMPORARY CONCRETE SAFETY BARRIER TYPE F3 ANCHORAGE			
RD622B			
FHWA APPROVAL	DESIGNED	QUANTITIES	TRACED
8-30-2011	APP'D. James O. Brewer	DESIGN CK.	DETAIL CK.
		QUAN. CK.	TRACE CK.

Note to Designer: For use on Haunched slab bridges, the Road Designer shall coordinate with the Bridge Designer for "corridor in the reinforcing steel layout to accommodate barrier anchoring".
 Road Designer shall coordinate barrier layout with Bridge Designer to accommodate for expansion during construction.
 Plotted: 31-AUG-2011 08:58
 Drawn By: bert
 File: rd622b.dgn (rd622b)

KDOT Graphics Certified
 KDOT Graphics Certified 08-31-2011