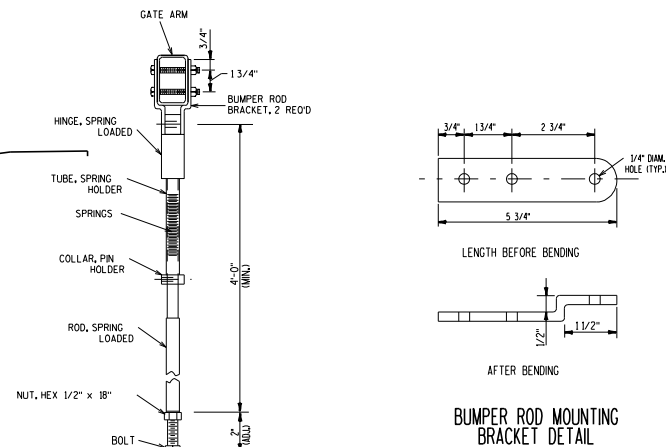


GENERAL NOTES

1. THE LOCATION OF RAMP CLOSURE GATES AND MOUNTING HEIGHT OF GATE ARM PIVOT SHALL BE VERIFIED BY THE ENGINEER.
2. HEIGHT OF GATE ARM GUIDES MAY BE VARIED AS REQUIRED FOR WARNING LIGHT CLEARANCE.
3. FIBERGLASS/ALUMINUM GATE ARM AND CAST ADAPTER SHALL BE SUPPLIED BY THE SAME VENDOR.
4. GATE ARM TO BE MOUNTED ON PROPOSED POLE AS INDICATED ON THE PLANS. PROPOSED POLE SHALL BE TYPE 5 POLE.
5. LOCATION OF THE CONCRETE BASE AND LENGTH OF THE GATE ARM WILL BE VERIFIED BY THE ENGINEER TO ENSURE ADEQUATE COVERAGE OF THE TRAVELED LANE.
6. GATE PIVOTS, SUPPORTS AND GUIDES, AND ALL ASSOCIATED HARDWARE SHALL BE GALVANIZED. ALL ROUGH EDGES AND BURRS SHALL BE GROUND SMOOTH PRIOR TO GALVANIZING.
7. ALL EXPOSED BOLT THREADS SHALL BE PAINTED WITH TWO COATS OF ZINC RICH PAINT CONFORMING WITH THE REQUIREMENTS OF ASTM A 780.
8. ANY FIELD DAMAGE TO THE GALVANIZING SHALL BE REPAIRED WITH TWO COATS OF ZINC RICH PAINT CONFORMING WITH THE REQUIREMENTS OF ASTM A 780.



GATE ARM BUMPER ROD DETAIL

GATE DETAIL
(HARDWARE OPTION)

PROJECT NO:

HWY:

COUNTY:

SHEET

E

FILE NAME : \\mllw00\ingrpro\j48097\rap gates\cds\CL0GATE10.DGN

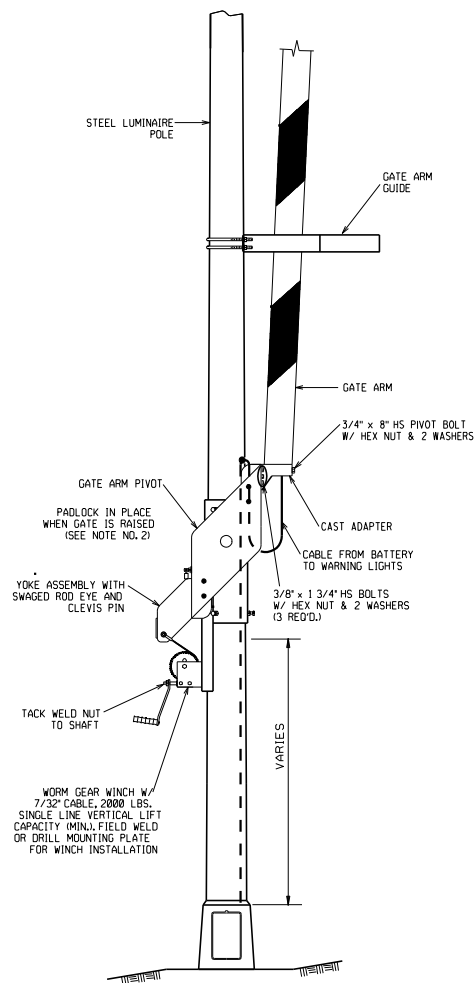
PLOT DATE : 04-MAR-2009 13:12

PLOT BY : pkutz

PLOT NAME :

PLOT SCALE : 30:909091:1

WISDOT/CADDs SHEET 42

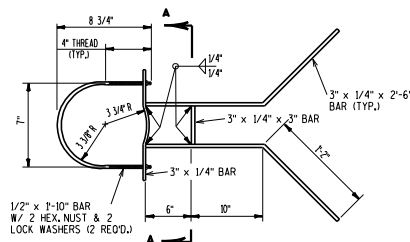


GATE PIVOT ASSEMBLY

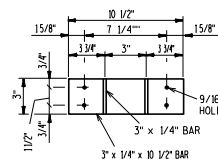
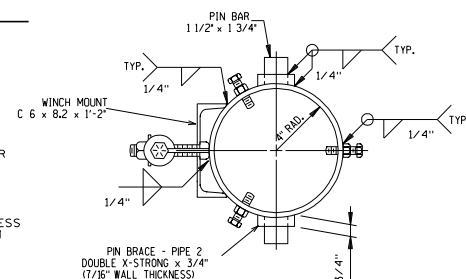
C:\GATE20.DGN

GENERAL NOTES

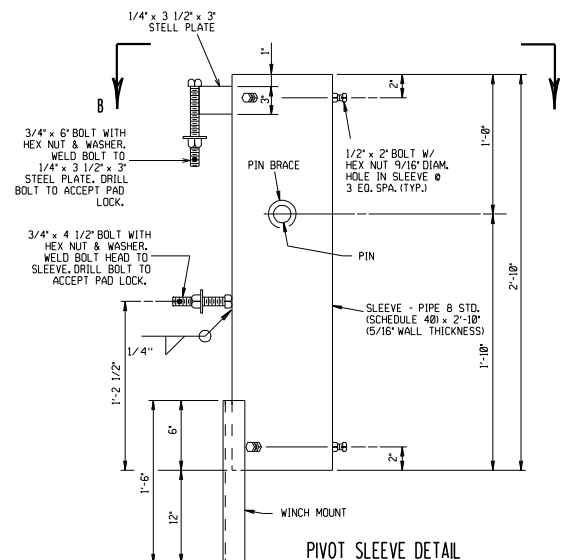
1. WORM GEAR WINCH AND CABLE SHALL BE AS SUPPLIED BY VENDOR
2. WHEN THE GATE IS FULLY RAISED, THE NUT AND WASHER SHALL BE PLACED SNUGLY AGAINST THE OUTSIDE OF THE REAR CHANNEL AND PADLOCKED IN PLACE. THE FABRICATOR SHALL SUPPLY ONE HEAVY WEATHER-PROOF PADLOCK WITH 30 NUMBERED KEYS FOR EACH GATE ARM.
3. WHEN THE GATE IS FULLY LOWERED, THE NUT AND WASHER SHALL BE PLACED SNUGLY AGAINST THE INSIDE OF THE REAR CHANNEL AND PADLOCKED INTO PLACE.
4. ANTI-SEIZE LUBRICATING MATERIAL SHALL BE USED ON ALL BOLT THREADS BEFORE INSTALLATION.
5. ALL BOLTS SHALL CONFORM TO ASTM A 307, GRADE A, UNLESS DESIGNATED AS HS (HIGH STRENGTH), WHICH SHALL CONFORM TO ASTM A 325.



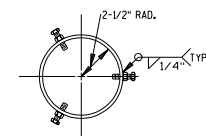
GATE ARM GUIDE DETAIL

SECTION A-A
U-BOLTS NOT SHOWN

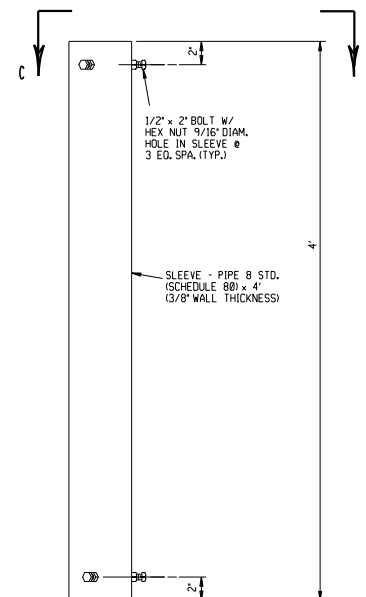
SECTION B-B



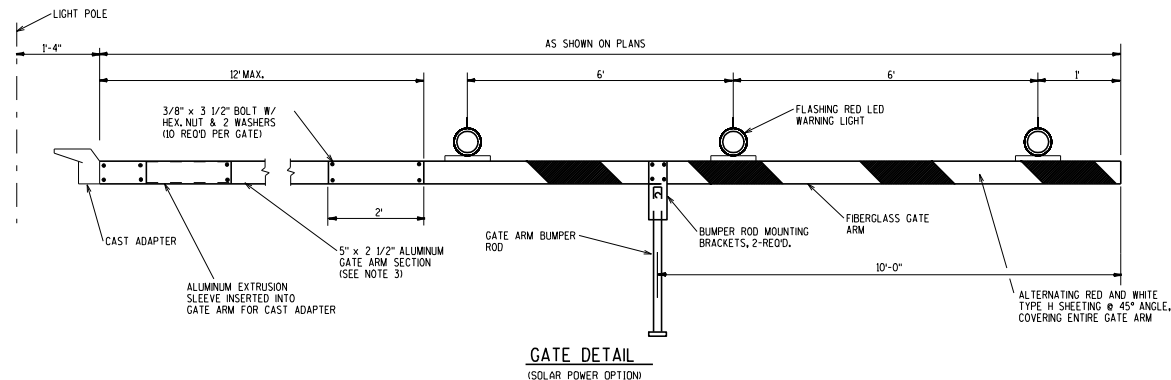
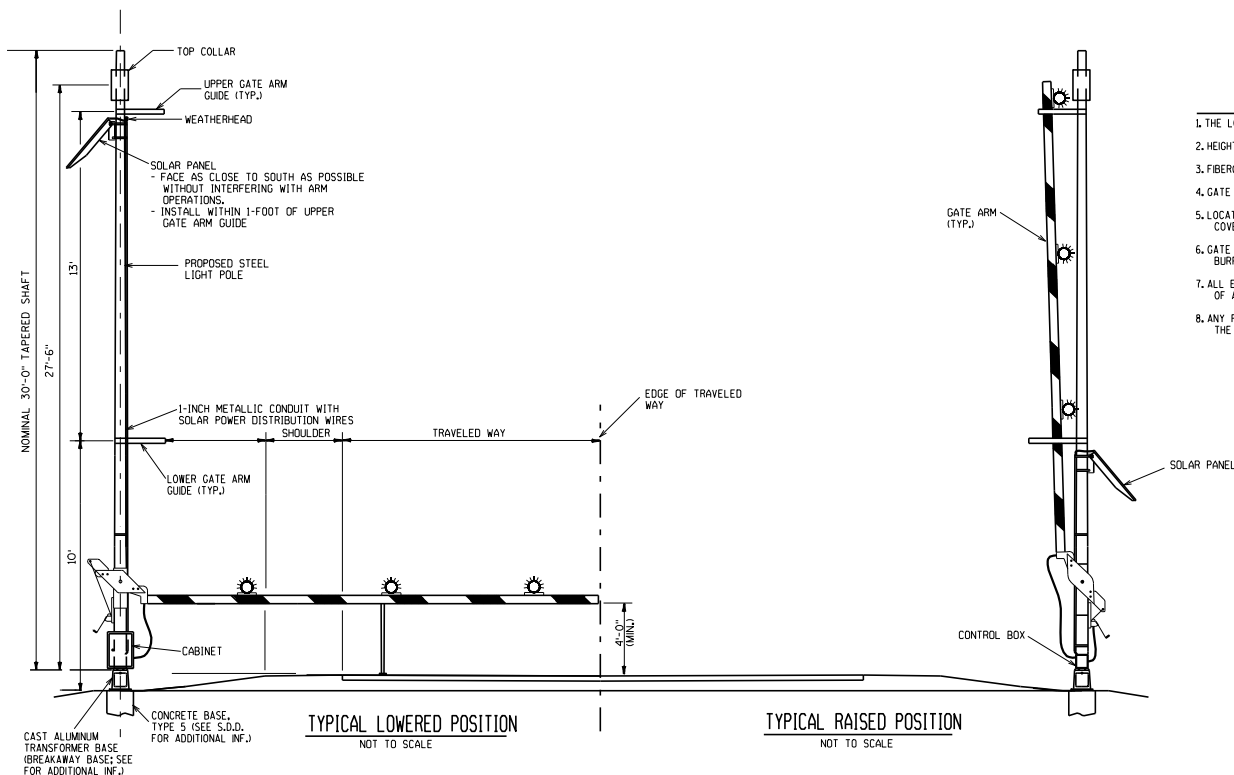
PIVOT SLEEVE DETAIL



SECTION C-C

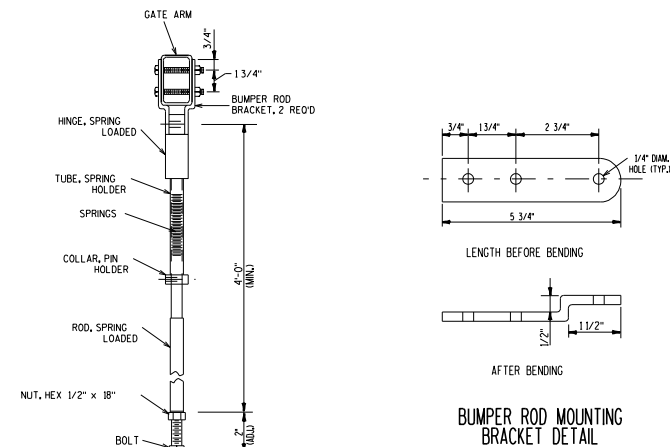


TOP COLLAR



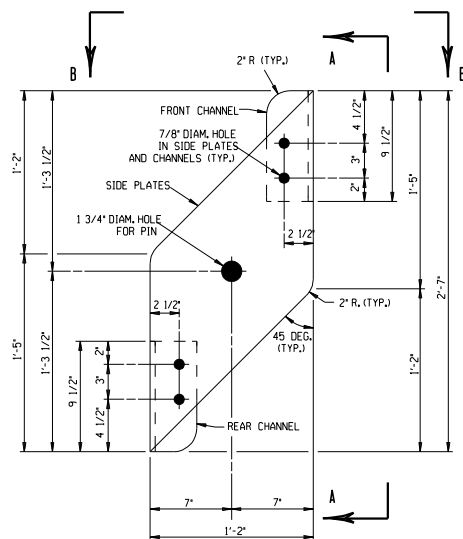
GENERAL NOTES

1. THE LOCATION OF RAMP CLOSURE GATES AND MOUNTING HEIGHT OF GATE ARM PIVOT SHALL BE VERIFIED BY THE ENGINEER.
2. HEIGHT OF GATE GUIDES MAY BE VARIED AS REQUIRED FOR WARNING LIGHT CLEARANCE.
3. FIBERGLASS/ALUMINUM GATE ARM AND CAST ADAPTER SHALL BE SUPPLIED BY THE SAME VENDOR.
4. GATE ARM TO BE MOUNTED ON PROPOSED POLE AS INDICATED ON THE PLANS. PROPOSED POLE SHALL BE TYPE 5 POLE.
5. LOCATION OF THE CONCRETE BASE AND LENGTH OF THE GATE ARM WILL BE VERIFIED BY THE ENGINEER TO ENSURE ADEQUATE COVERAGE OF THE TRAVELED LANE.
6. GATE PIVOTS, SUPPORTS AND GUIDES, AND ALL ASSOCIATED HARDWARE SHALL BE GALVANIZED. ALL ROUGH EDGES AND BURRS SHALL BE GROUND SMOOTH PRIOR TO GALVANIZING.
7. ALL EXPOSED BOLT THREADS SHALL BE PAINTED WITH TWO COATS OF ZINC RICH PAINT CONFORMING WITH THE REQUIREMENTS OF ASTM A 780.
8. ANY FIELD DAMAGE TO THE GALVANIZING SHALL BE REPAIRED WITH TWO COATS OF ZINC RICH PAINT CONFORMING WITH THE REQUIREMENTS OF ASTM A 780.

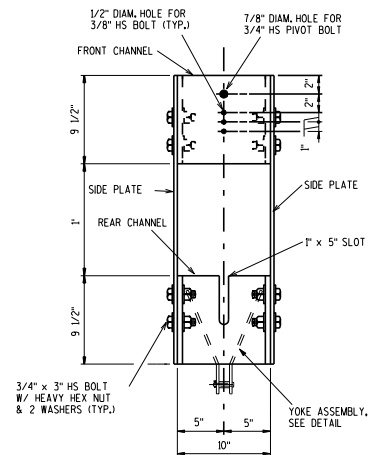


GATE ARM BUMPER ROD DETAIL

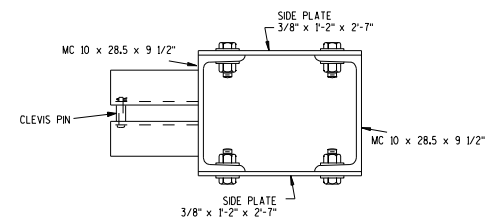
BUMPER ROD MOUNTING
BRACKET DETAIL



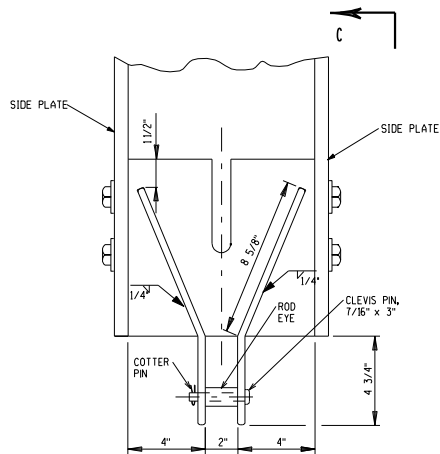
SIDE PLATE DETAIL



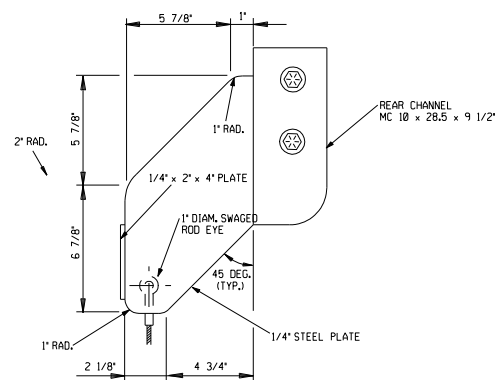
SECTION A-A



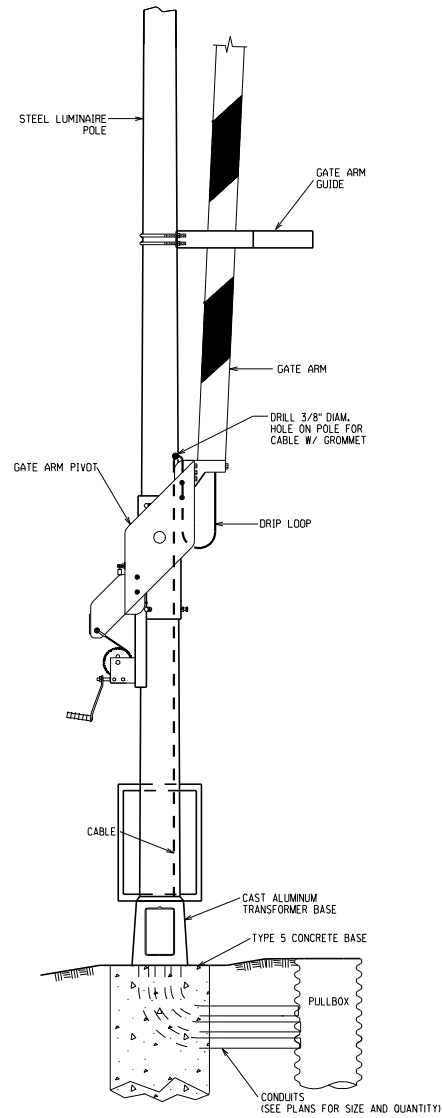
SECTION B-B



YOKE ASSEMBLY DETAIL



SECTION C-C



PROJECT NO:

HWY:

COUNTY:

SHEET

E

FILE NAME : \\mllw00\ingrproj\48097\tramp_gates\cads\CLOGATE10.DGN

PLOT DATE : 04-MAR-2009 13:14

PLOT BY : pkutz

PLOT NAME :

PLOT SCALE : 30.909091:1

WISDOT/CADDs SHEET 42