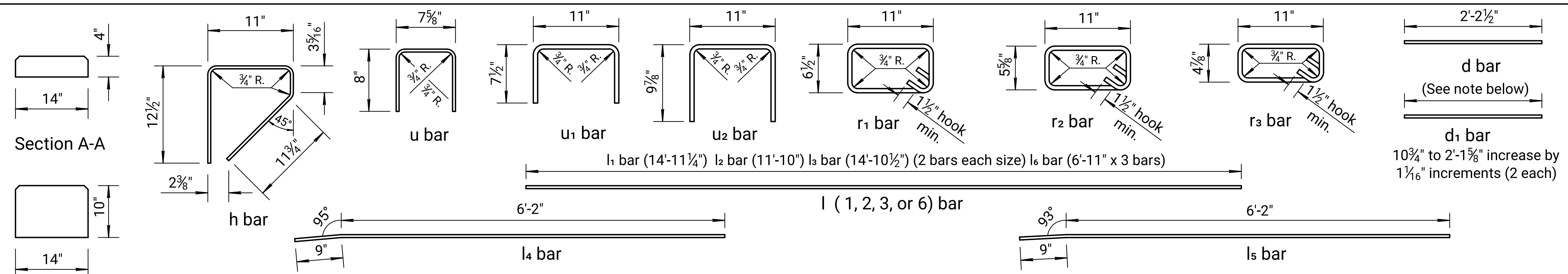
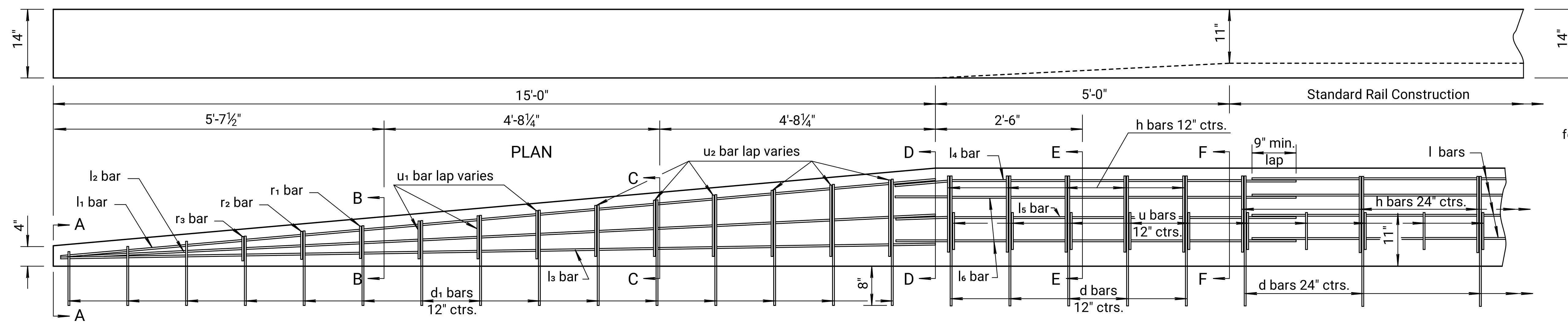


STATE	PROJECT NO.	YEAR	SHEET NO.	TOTAL SHEETS
KANSAS				

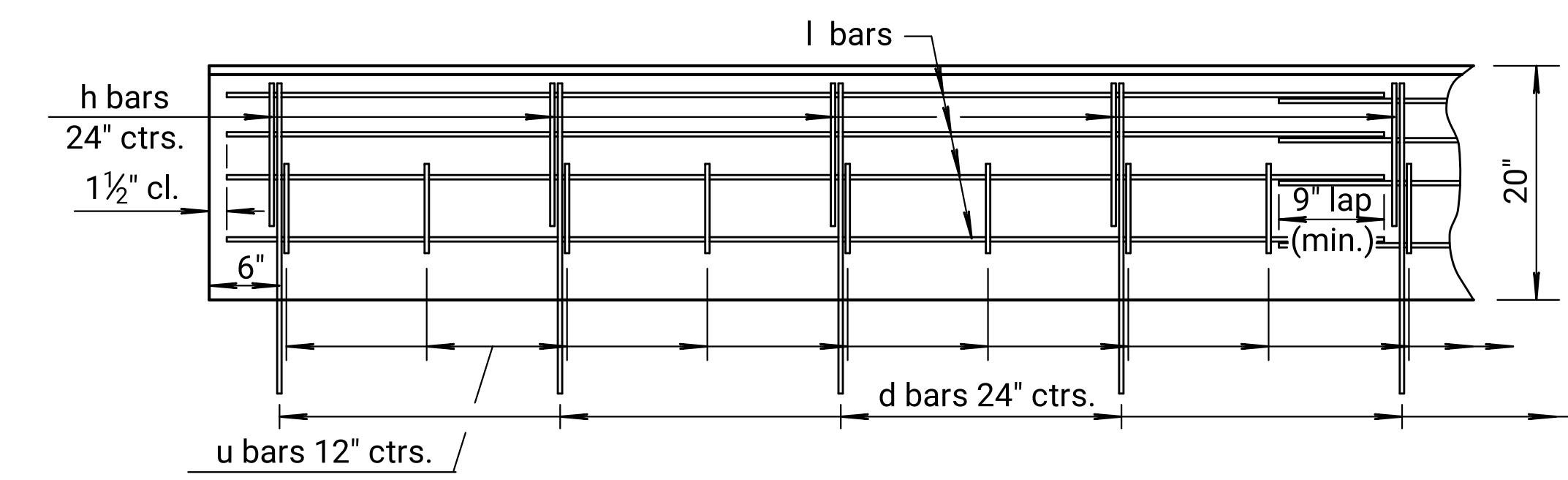
**GENERAL NOTES:**  
 Low Profile Barrier should be installed on 45 MPH or less (TL-2) roadways.  
 Use ASTM A615, Grade 60 reinforcing bars and Grade 4.5 (AE) Concrete for casting. All reinforcing shall be #3 bars with a minimum clear distance to reinforcement of 1 1/2".  
 Use a 3/4" Chamfer on all top edges.  
 All work and materials to construct Concrete Barrier, Transition Section and Tapered End Section will be bid as Concrete Safety Barrier (Low Profile), measured along barrier centerline and paid for by the linear foot.



BAR DIAGRAMS (Tapered Barrier Section)



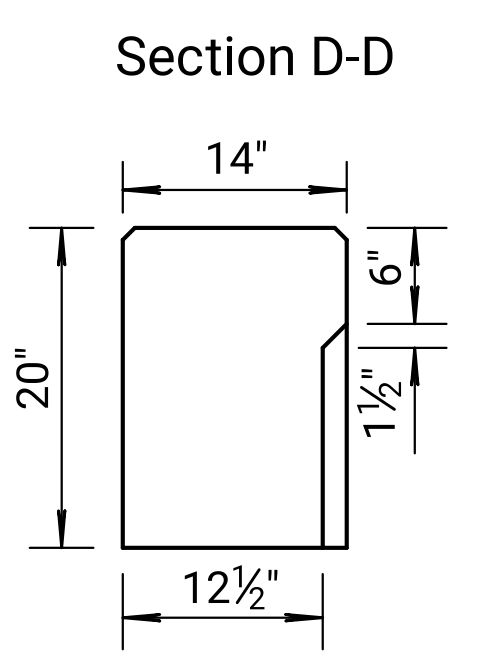
ELEVATION (Section)



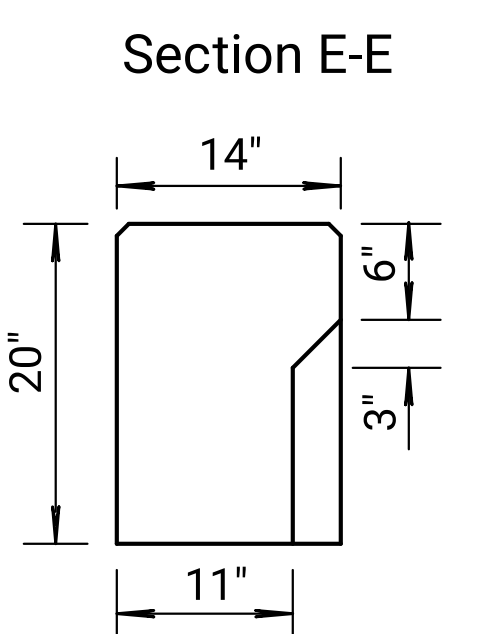
ELEVATION (Section) STANDARD RAIL

TAPER/TRANSITION BARRIER SECTION					
Bar	Bar Size	Shape	No. of Bars	Length ft.	Weight lbs.
d	#3	—	10	2'-2 1/2"	8.3
d1	#3	—	30	Increments	17.1
h	#3	∇	5	3'-1 3/4"	5.9
l1	#3	—	2	14'-11 1/4"	11.2
l2	#3	—	2	11'-10"	4.5
l3	#3	—	2	14'-10 1/2"	11.2
l4	#3	—	2	6'-11"	5.2
l5	#3	—	2	6'-11"	5.2
l6	#3	—	3	6'-11"	7.8
r1	#3	○	1	3'-2"	1.2
r2	#3	○	1	3'-0"	1.1
r3	#3	○	1	2'-10 1/2"	1.1
u	#3	∩	10	1'-10"	7.4
u1	#3	∩	6	2'-5 1/2"	4.9
u2	#3	∩	12	2'-0 1/2"	11.6
				Conc. Gr. 4.5 (AE)	1.1 Cu. Yd.
				Reinf. Steel (Grade 60)	105 Lbs.

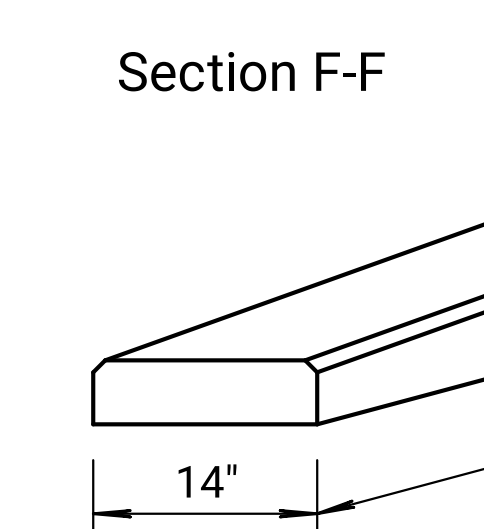
20'-0" Tapered Barrier Section (for information only)



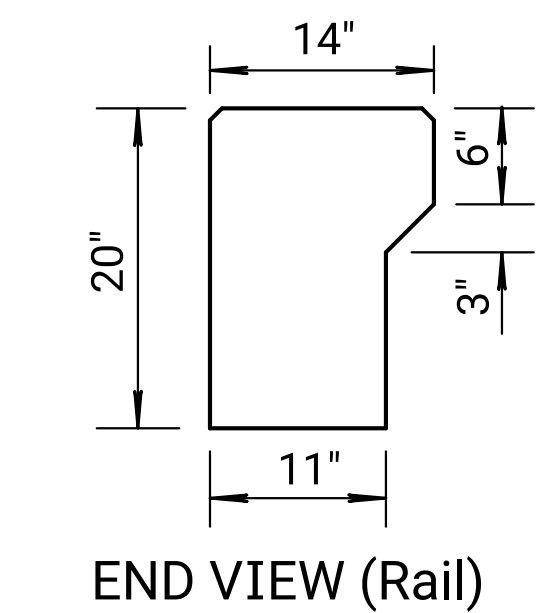
Section D-D



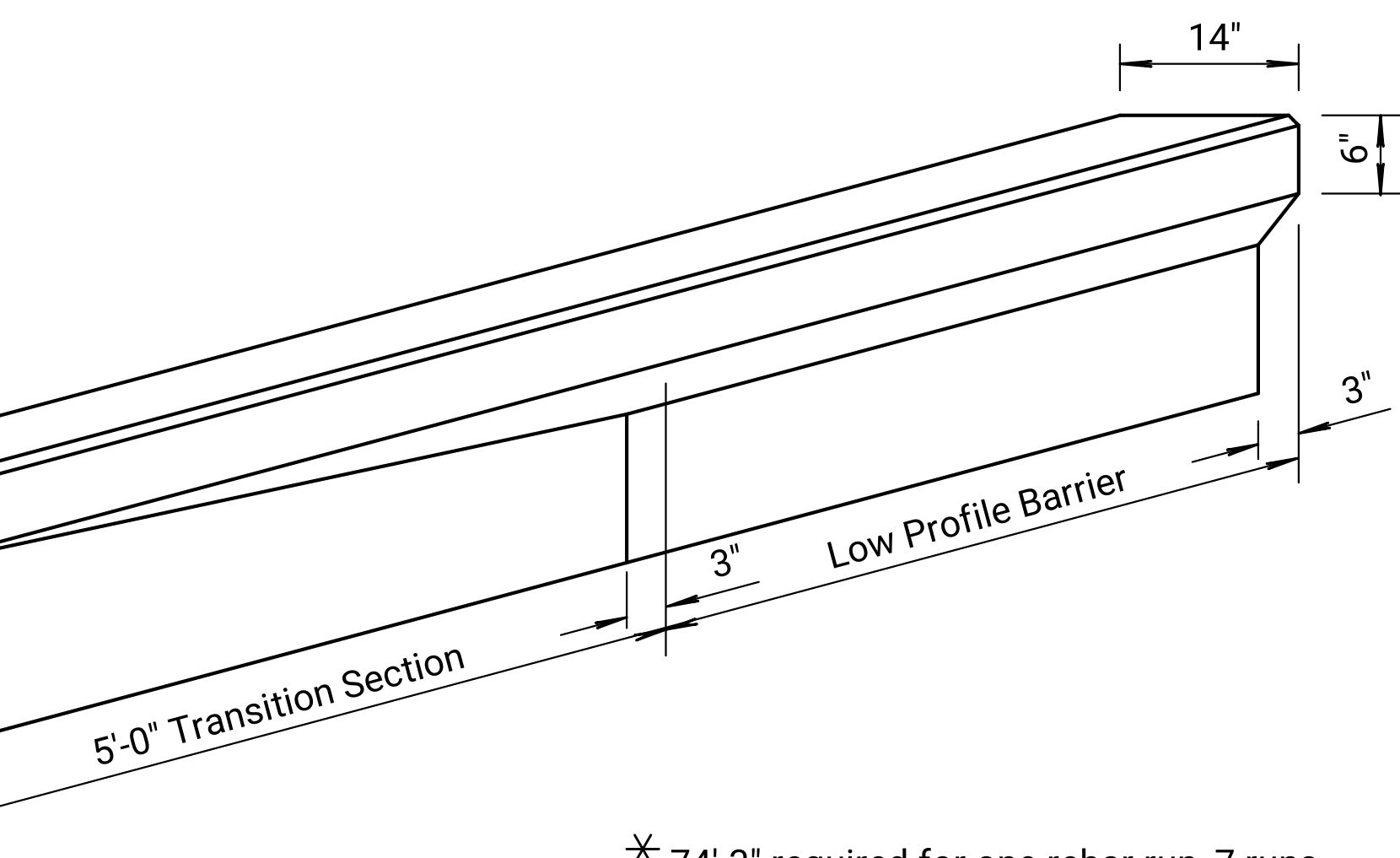
Section E-E



Section F-F



END VIEW (Rail)

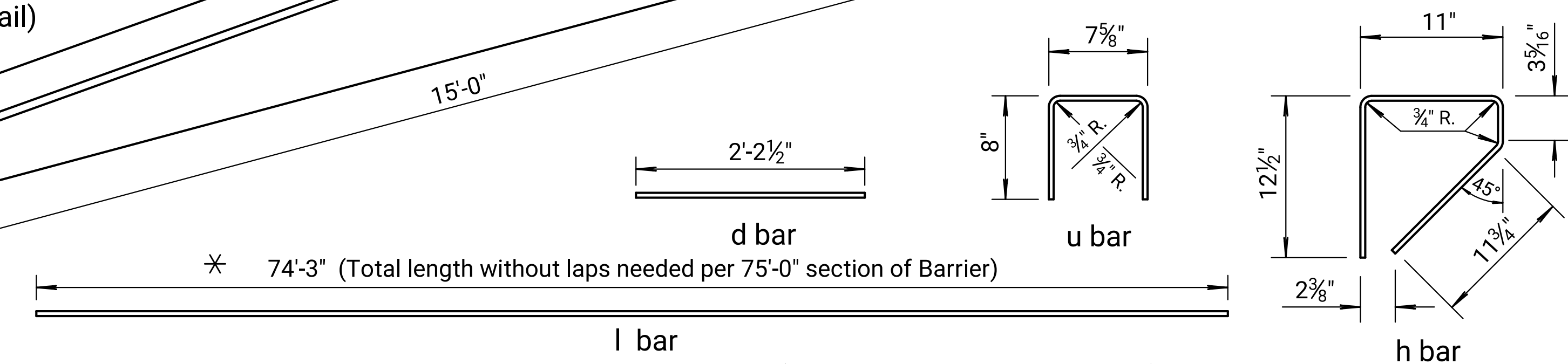


ISOMETRIC VIEW

\* 74'-3" required for one rebar run, 7 runs needed, length of longitudinal bar is optional as long as lengths include corresponding 9" (min.) laps.

TYPICAL BARRIER SECTION					
Bar	Bar Size	Shape	No. of Bars	Length ft.	Weight lbs.
d	#3	—	76	2'-2 1/2"	63.1
h	#3	∇	38	3'-1 3/4"	44.8
l	#3	—	*	*	* 220
u	#3	∩	150	1'-10"	103.4
				Conc. Gr. 4.5 (AE)	4.7 Cu. Yd.
				Reinf. Steel (Grade 60)	430 Lbs.

Per 75'-0" Typical Barrier Section (for information only)



BAR DIAGRAMS (20" LOW PROFILE BARRIER)

\* 74'-3" (Total length without laps needed per 75'-0" section of Barrier)

3					
2					
1					
NO.	DATE	REVISIONS	BY	APP'D	

KANSAS DEPARTMENT OF TRANSPORTATION

**PERMANENT CONC. SAFETY BARRIER (LOW PROFILE) TRANSITION & TAPERED END SECT.**

RD625B

FHWA APPROVAL	4-7-10	APP'D	James O. Brewer
DESIGNED	DETAILED	QUANTITIES	TRACED
DESIGN CK.	DETAIL CK.	QUAN. CK.	TRACE CK.

Per 75'-0" Typical Barrier Section (for information only)

RD625B

03-28-2018