

Revised in 94'

A GUIDE TO STANDARDIZED HIGHWAY BARRIER RAIL HARDWARE

A REPORT PREPARED AND APPROVED
BY THE
AASHTO—AGC—ARTBA JOINT COOPERATIVE COMMITTEE



STANDARD BARRIER TYPES

GROUND-MOUNTED									
G1	G2	G3	G4			G8	G9		
				open	open				
	MB2	MB3	MB4	MB5	MB7	MB8	MB9		
open									
STRUCTURE-MOUNTED									
	MB3B	MB4B	MB5B	MB7B	MB8B	MB9B			
open									

SPECIFICATIONS

Posts and blocks shall conform to A.S.T.M. A36 and shall be galvanized in accordance with A.S.T.M. A123 except when corrosion resistant steel posts are requested, in which case posts and blocks shall conform to A.S.T.M. A588 and shall not be painted or galvanized.

No punching, drilling or cutting will be permitted after galvanizing.

Dimensional tolerances not shown or implied are intended to be those consistent with the proper functioning of the part, including its appearance, and accepted manufacturing practices.

INTENDED USE

This post and block are used in the standard "W" Beam Guardrail and "W" Beam Median Barrier designs G4 and MB4.

Notes: This post may be used as an alternate to P-52-76 and P-65-79.

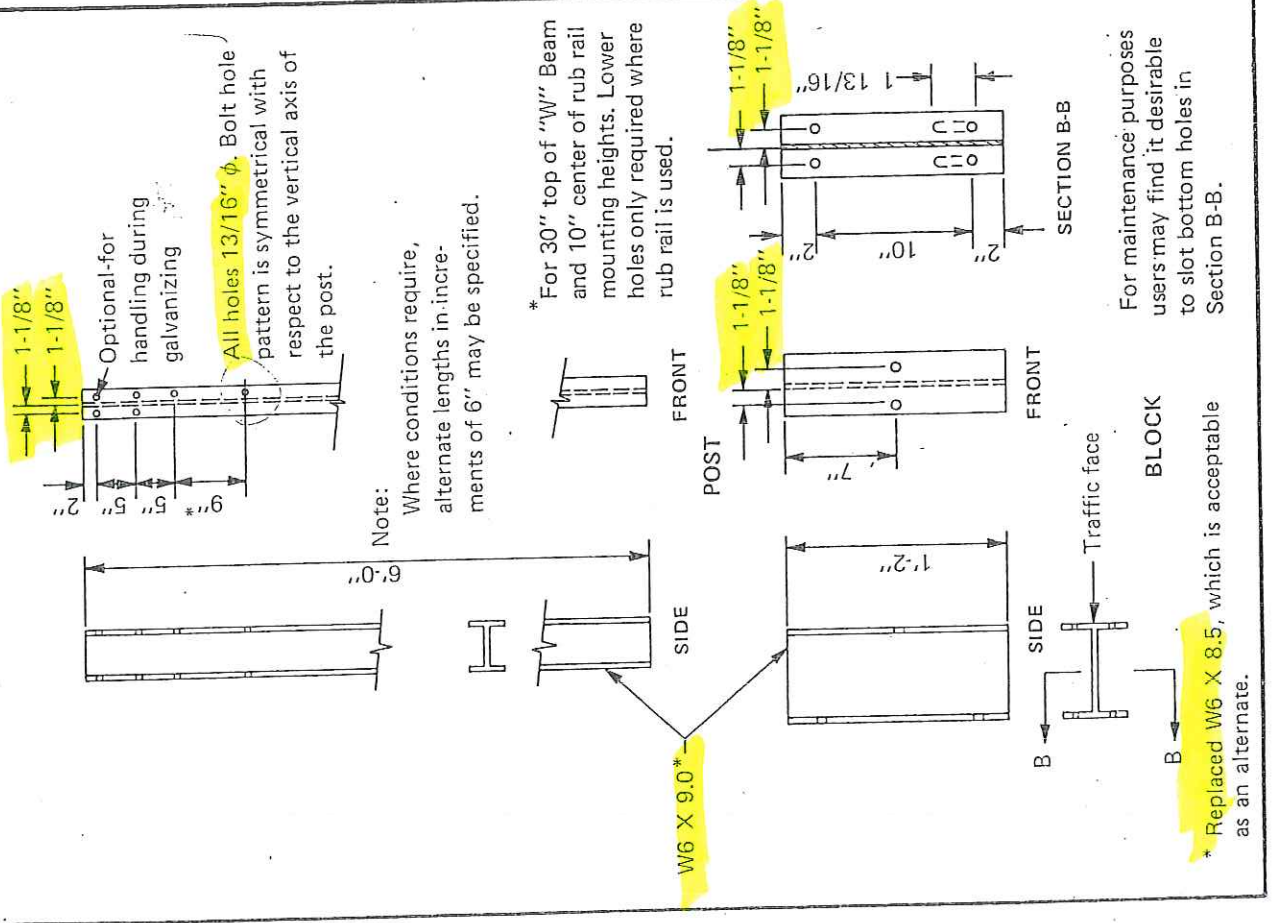
Some barrier stiffness transition designs call for strengthening posts by the addition of soil bearing plates with areas of about 1-1/3 to 2 sq. ft. No details for this are proposed herein.

**G4 AND MB4
STRUCTURAL SHAPE POST AND BLOCK**

HM-TF-13

P-10-79

STANDARD



3/6

SPECIFICATIONS

Posts and post plates shall conform to the requirements of ASTM A36 and shall be galvanized in accordance with ASTM A123.

Welding shall meet the current requirements of the American Welding Society Structural Welding Code, AWS D1.1.

No punching, drilling, cutting, or welding will be permitted after galvanizing.

Dimensional tolerances not shown or implied are intended to be those consistent with the proper functioning of the part, including its appearance, and accepted manufacturing practices.

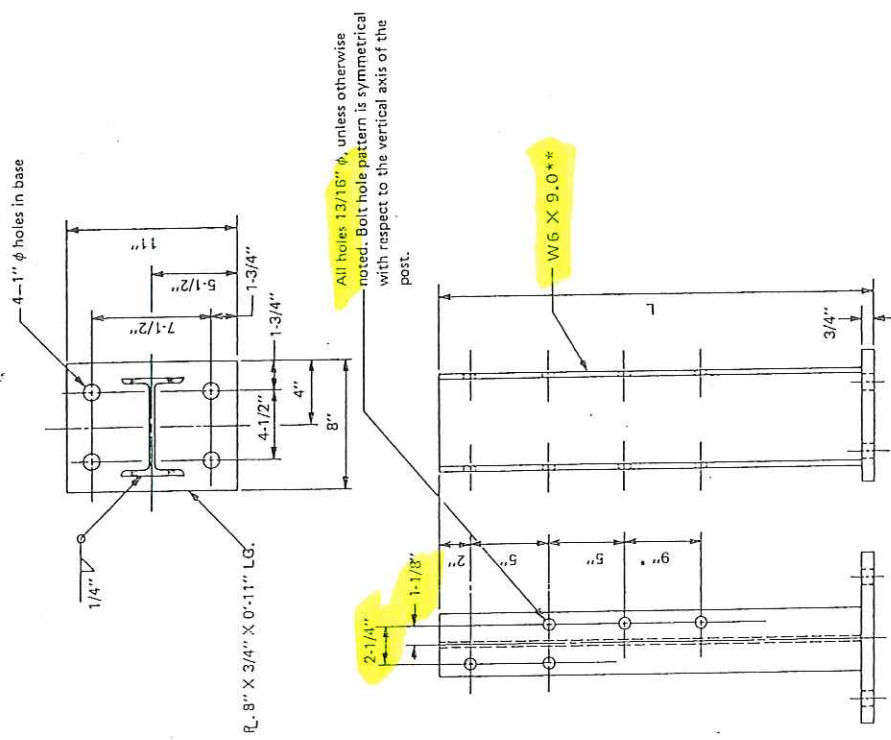
INTENDED USE

1. (L = 2'-4") Post for median barrier design MB4B with top of rail mounted 2'-3" above bottom of post base.
2. (L = 2'-7") Post for median barrier design MB4B with rub rail added, and top of traffic rail mounted 2'-6" above bottom of post base.

Note: This post may be used as an alternate to P-53-76. See P-10-79 for block details.

**MB4B
STRUCTURAL SHAPE POST**

HM-TF-13	STANDARD	P-42	LENGTH DESIGNATION	-79
----------	----------	------	--------------------	-----



* For 30" top of "w" beam and 10" center of rubrail mounting heights above bottom of base. Lower holes only required where rub-rail is used.

** Replaced W6 X 8.5, which is acceptable as an alternate.

4/6

SPECIFICATIONS

Posts and blocks shall conform to A.S.T.M. A36 and shall be galvanized in accordance with A.S.T.M. A123 except when corrosion resistant steel posts are requested in which case posts and blocks shall conform to A.S.T.M. A588 and shall not be painted or galvanized.

No punching, drilling, or cutting will be permitted after galvanizing.

Dimensional tolerances not shown or implied are intended to be those consistent with the proper functioning of the part, including its appearance, and accepted manufacturing practices.

INTENDED USE

This post and block are used in the standard barrier designs G9 and MB9.

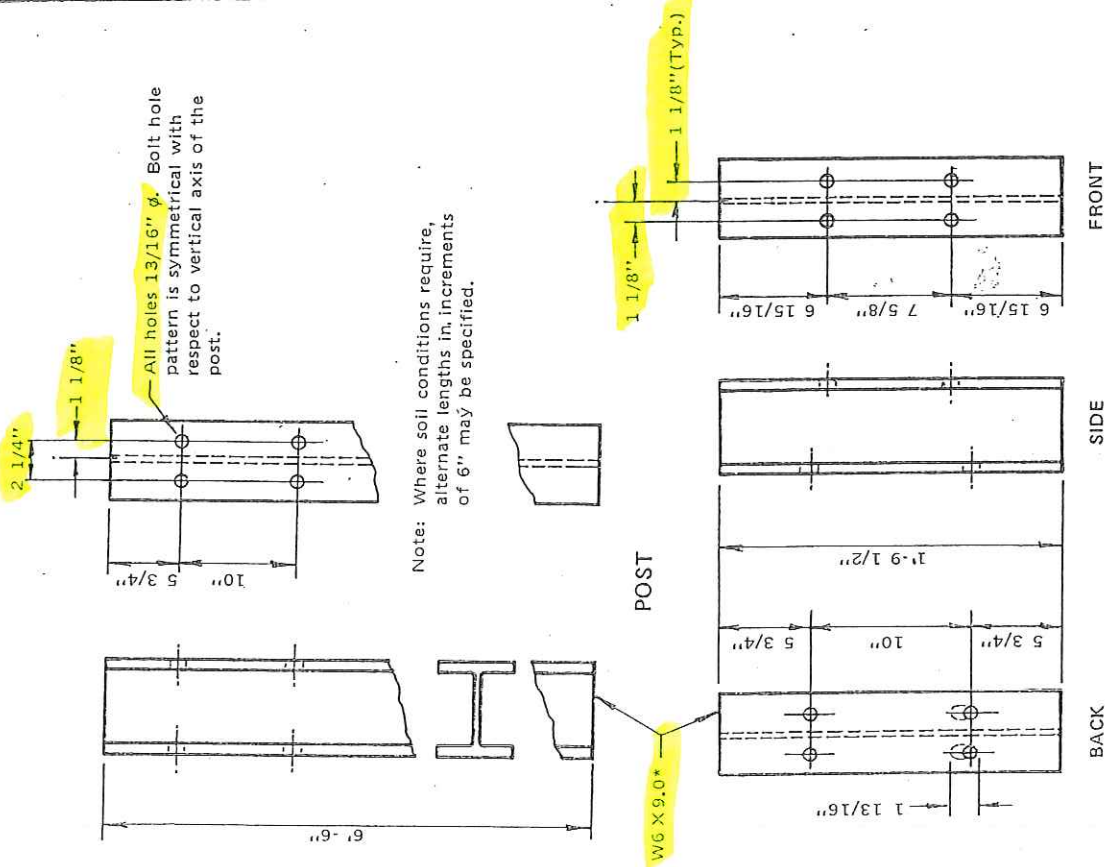
Notes: This post may be used as an alternate to P-56-76 and P-66-79. Some barrier stiffness transition designs call for strengthening posts by the addition of soil bearing plates with areas of about 1-1/3 to 2 sq. ft. No details for this are proposed herein.

**G9 AND MB9
STRUCTURAL SHAPE POST AND BLOCK**

HM-TF-13

STANDARD

P - 54 - 79



* Replaced WG X 8.5, which is acceptable as an alternate.

For maintenance purposes users may find it desirable to slot bottom holes.

5/6

