

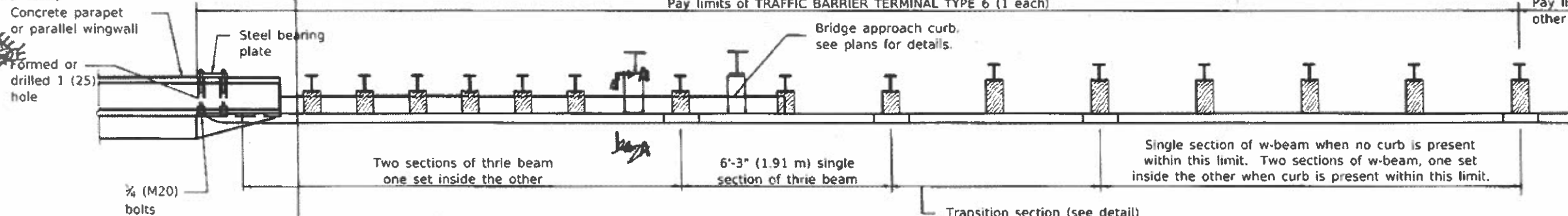
PARAPET OR WINGWALL

USE PLAN-TYPE 6 CONNECTION TO SINGLE SLOPE, ~~SHADE,~~

Show 12" blockouts at all posts

Pay limits of TRAFFIC BARRIER TERMINAL TYPE 6 (1 each)

Pay limits of other type



PLAN

Transition section (see detail) included in TRAFFIC BARRIER TERMINAL TYPE 6

Thrie beam end shoe bolted to parapet or wingwall.

15'-7 1/2" (4.76 m)
9'-4 1/2" (2.86 m)

21'-10 1/2" (6.67 m)
20'-4 1/2" (6.17 m)

Pay limits of other type

8" spaces at 1'-6 3/4" (476)

7" spaces at 3'-1 1/2" (953)

No beginning or ending of curb within this limit.

21 (533)

24 3/4 (632)

USE ELEVATION-TYPE 6 CONNECTION TO SINGLE SLOPE

Curb, when required

Begin 6' (1.83 m) posts

Begin 6' (1.83 m) Posts

ELEVATION

Posts 13 thru 17 shall be per Standard 630001 for Type B guardrail.

Curb may be part of approach slab, curb and gutter, stand-alone concrete curb, or bituminous curb on paved shoulder.

Replace with details
• Posts 1-6 and Posts 7-11
and
• Post 12

GENERAL NOTES

See Standard 630001 for details of guardrail not shown.

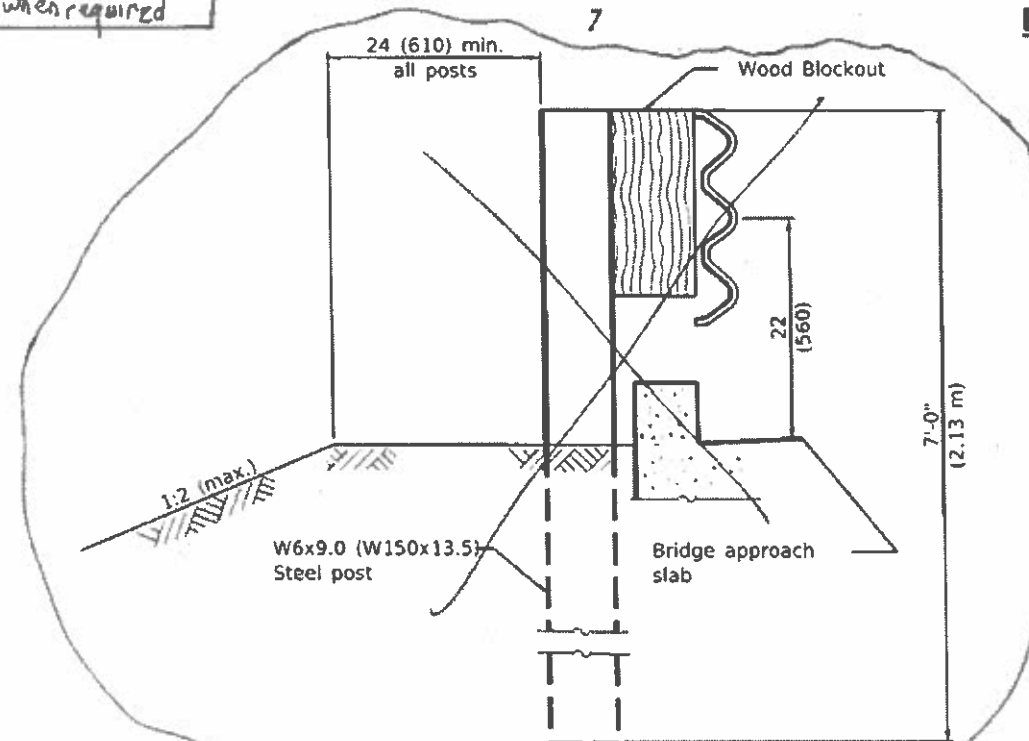
EXCEPT, Thrie beam rail shall be bolted to block-out at all posts. See detail for post 12 bolting.

All slope ratios are expressed as units of vertical displacement to units of horizontal displacement (V:H).

All dimensions are in inches (millimeters) unless otherwise shown.

SINGLE SLOPE

DRAFT 2
DLP
7/26/2018



SECTION A-A

DATE	REVISIONS
1-1-17	Revised length of thrie beam. Revised length of posts.
4-1-16	Changed 'Bridge approach pavement' to 'Bridge approach slab'.

TRAFFIC BARRIER TERMINAL, TYPE 6

(Sheet 1 of 3)

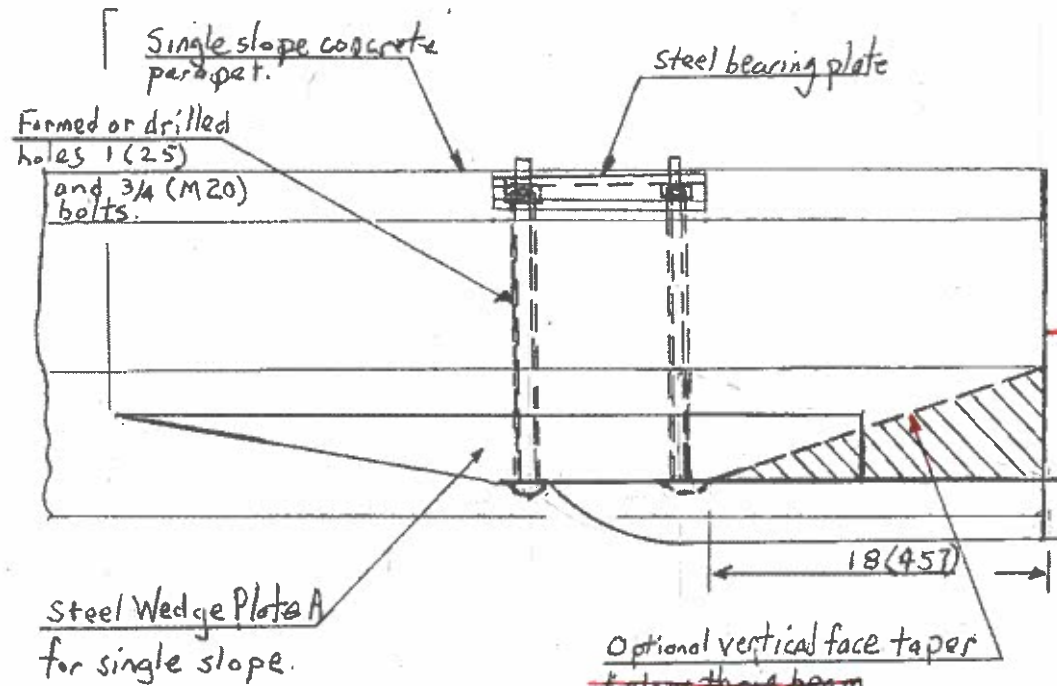
STANDARD 631031-15

Illinois Department of Transportation

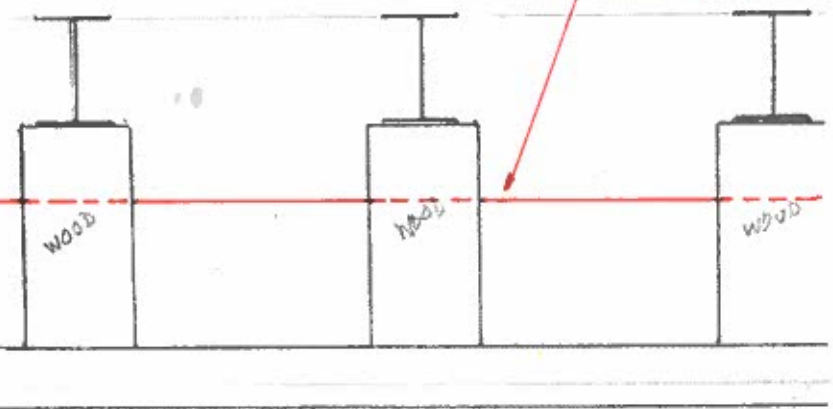
PASSED January 1, 2017
Michael Bond
ENGINEER OF POLICY AND PROCEDURES

APPROVED January 1, 2017
Therese M. Davis
ENGINEER OF DESIGN AND ENVIRONMENT

IS/STD 1-1-97



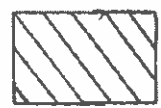
Identical for other Type 6 connections



Steel Wedge Plate A for single slope.

Optional vertical face taper below the beam

If the optional taper is not present, 4 (100) curb is required to post 8, and may taper to 2 (50) to end at post 9.



Optional vertical face taper

DRAFT 2
~~NO CHANGE~~
 DLP
 7/28/18
 26

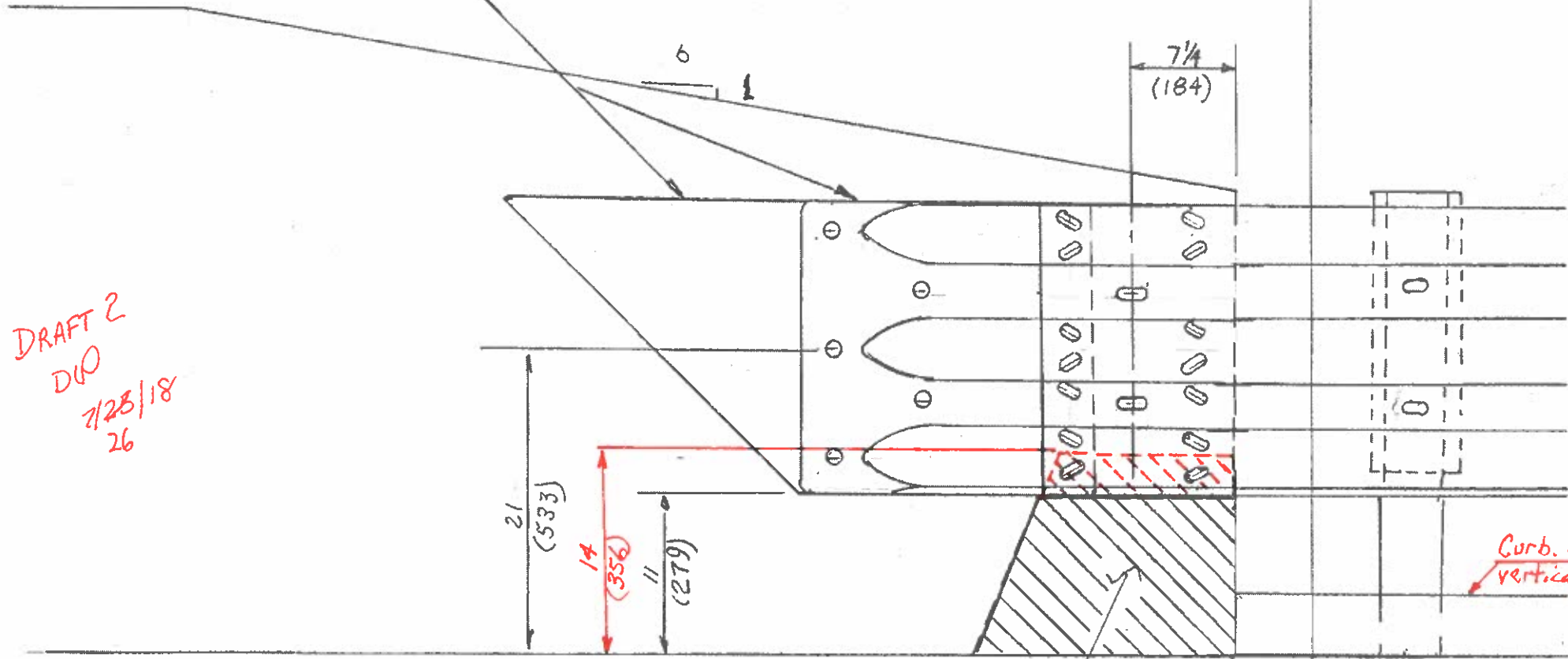
PLAN-TYPE 6 CONNECTION TO SINGLE SL

(A)-2

Single slope Wedge Plate A
and three beam end shoe
bolted to parapet.

Identical for all
Type 6 Connection

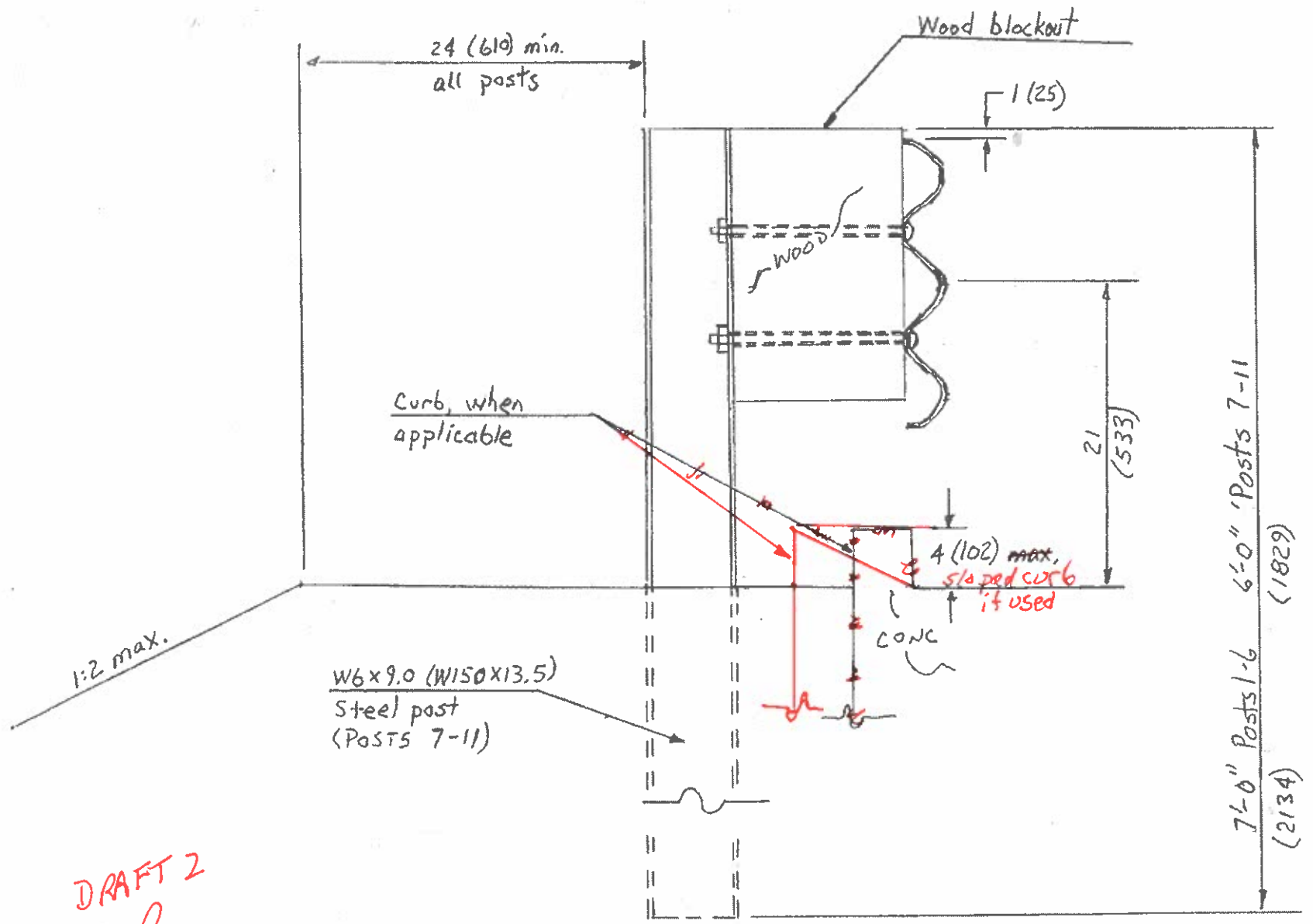
DRAFT 2
DWG
7/28/18
26



Optional vertical face
taper from 6" (150) at parapet end
to zero in 18 (457).

Curb. If optional
vertical face is used, is not
then curb is
not required. present,
4 (100) curb is
required to post 8,
and may taper to 2 (50)
to end at post 9.

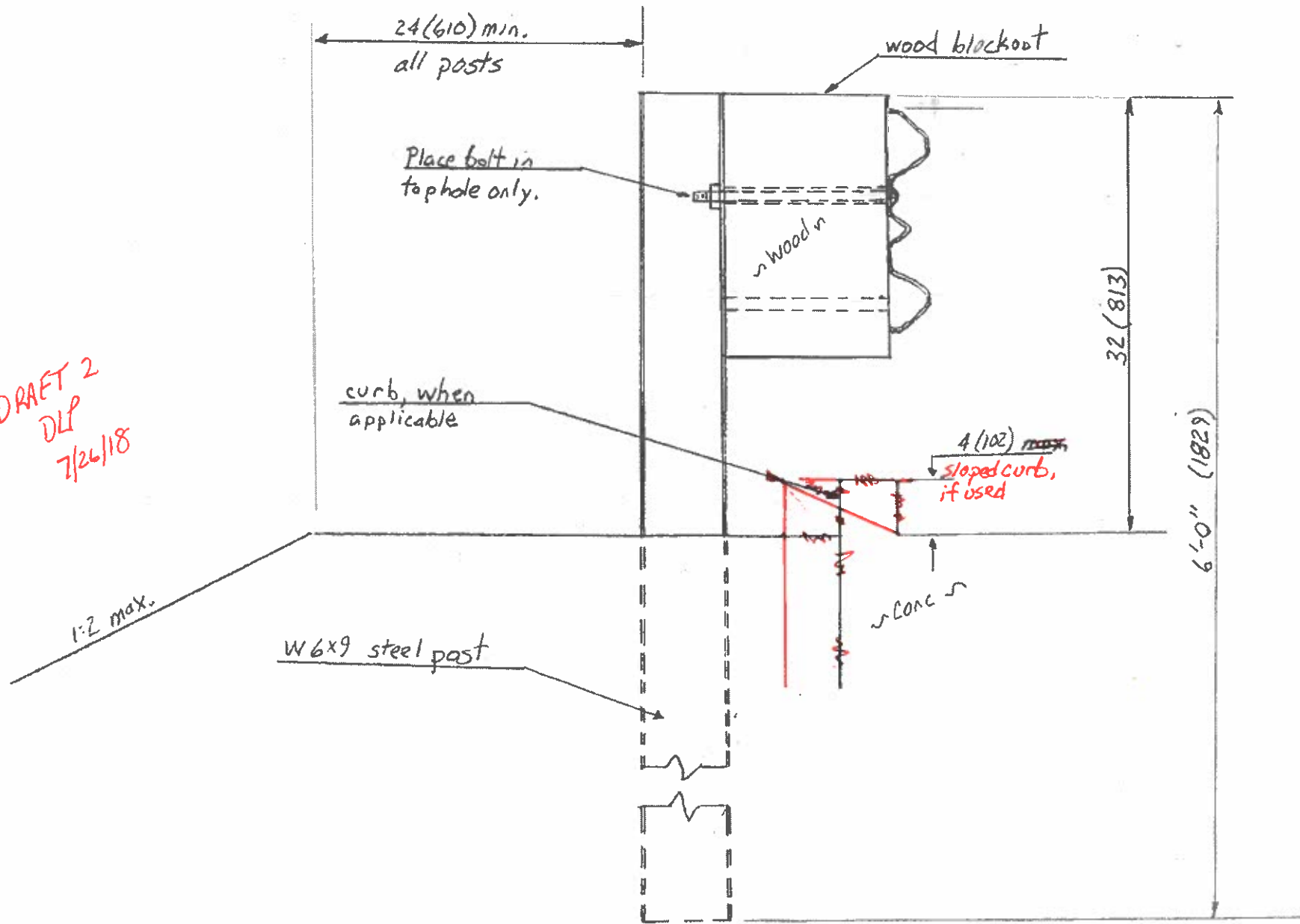
ELEVATION - TYPE 6 CONNECTION TO
SINGLE SLOPE



DRAFT 2
 DLP
 7/26/18

POSTS 1-6
 AND POSTS 7-11

DRAFT 2
DLP
7/26/18



POST 12

A-5