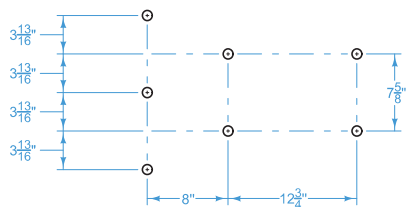
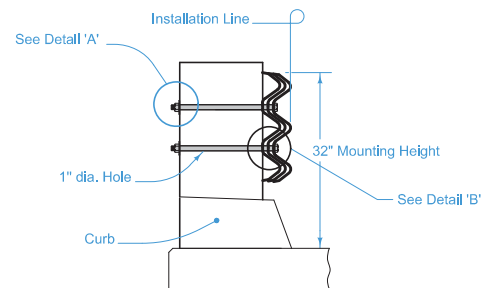




① See BA-201.



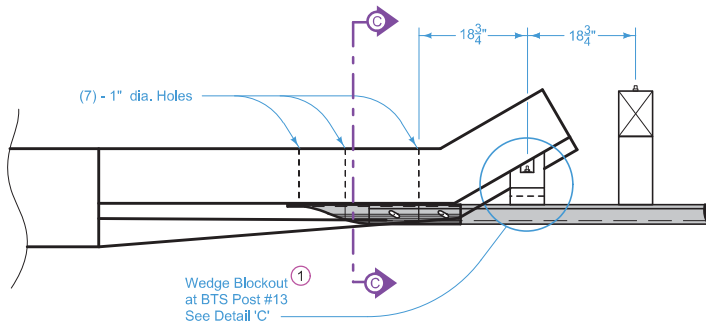
7 - BOLT PATTERN
Thrie - Beam Terminal Connector



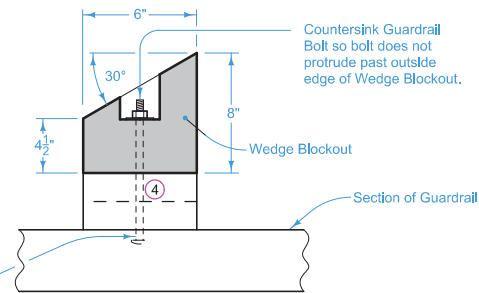
SECTION B-B

 IOWA DOT	REVISION	
	2	10-21-14
	BA-202	
	SHEET 2 of 3	
	REVISIONS: Changed label from Bridge End Post to Bridge Rail End Section.	
		
APPROVED BY DESIGN METHODS ENGINEER		
STEEL BEAM GUARDRAIL BOLTED END ANCHOR		

TYPE C

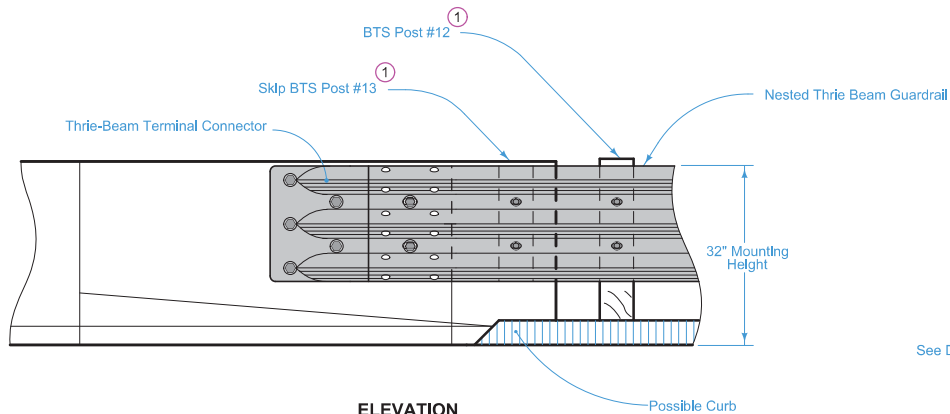


PLAN

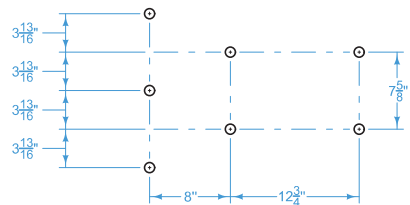


(2) Approximately 6" long Guardrail Bolts

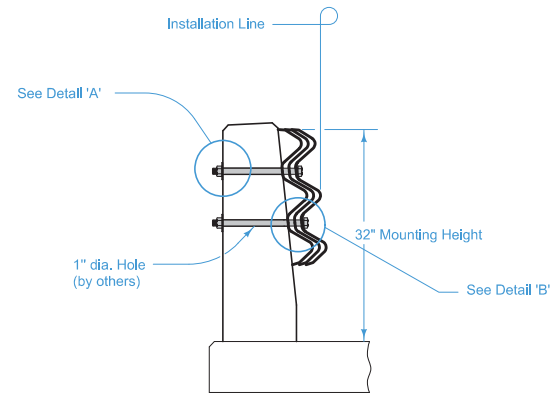
DETAIL 'C'




ELEVATION



7 - BOLT PATTERN
Thrie-Beam Terminal Connector



- ① See BA-201.
- ④ Use treated spacer boards (1 in. x 6 in. or 2 in. x 6 in.) to produce a tight fit between the wedge blockout and endpost. A nominal 1 inch gap is acceptable. Spacer boards are incidental to bolted end anchor.

 IOWA DOT STANDARD ROAD PLAN REVISIONS: Changed label from Bridge End Post to Bridge Rail End Section.	REVISION	
	2	10-21-14
	BA-202	
	SHEET 3 of 3	
<i>Brian Smith</i> APPROVED BY DESIGN METHODS ENGINEER		
STEEL BEAM GUARDRAIL BOLTED END ANCHOR		