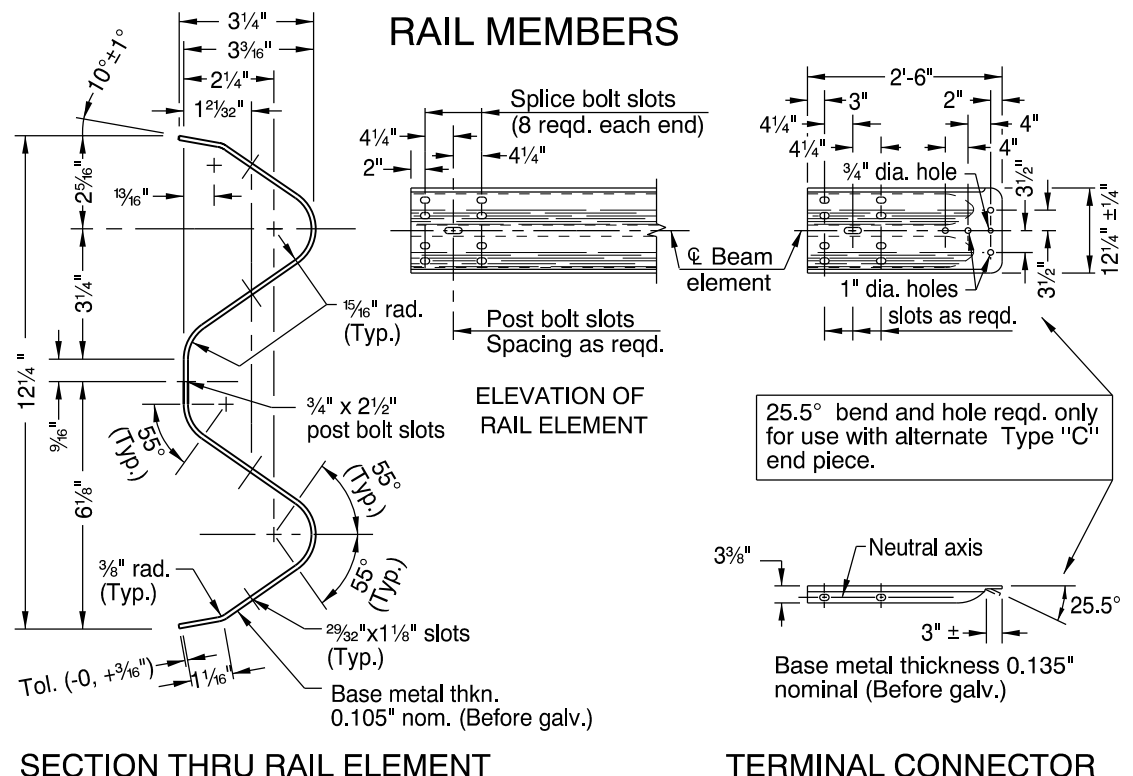
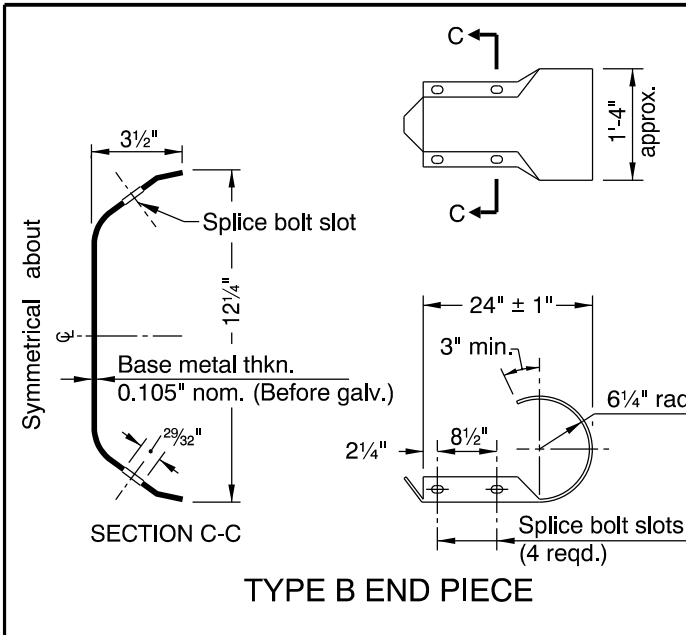
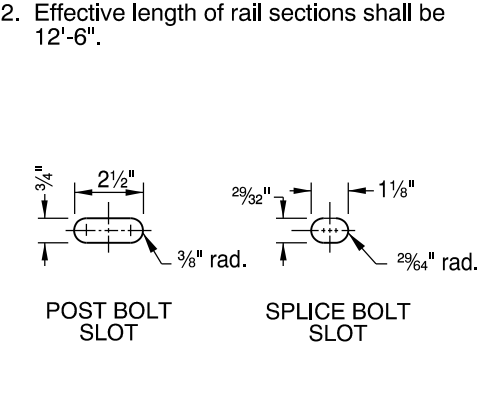


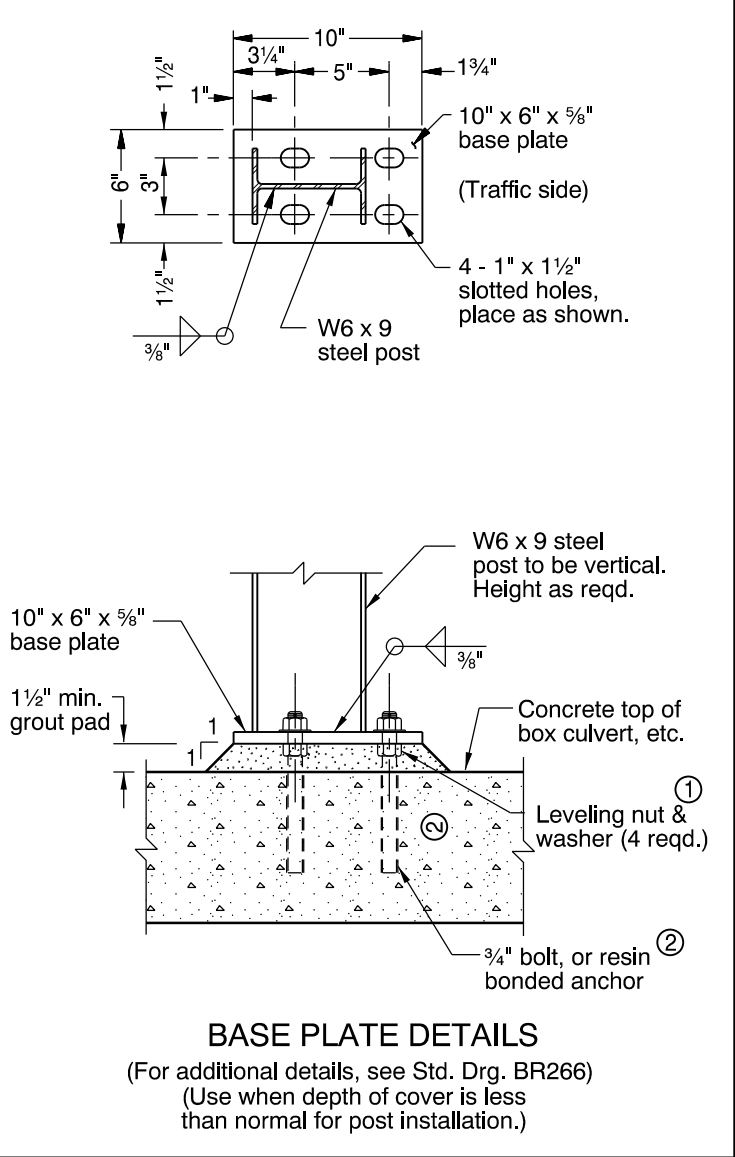
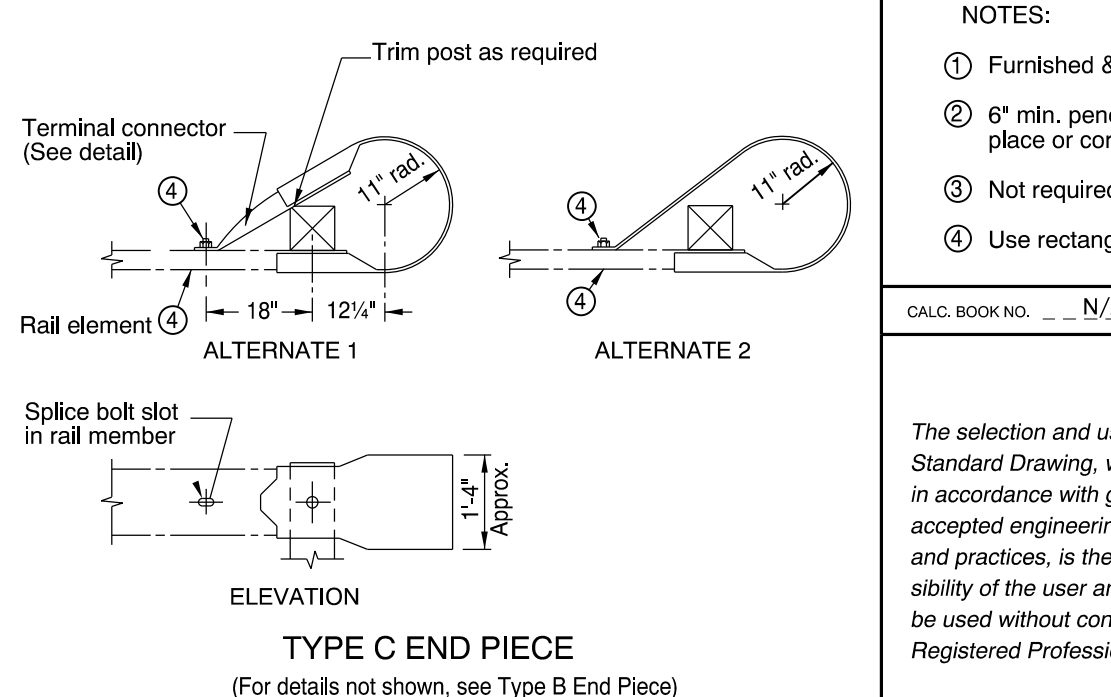
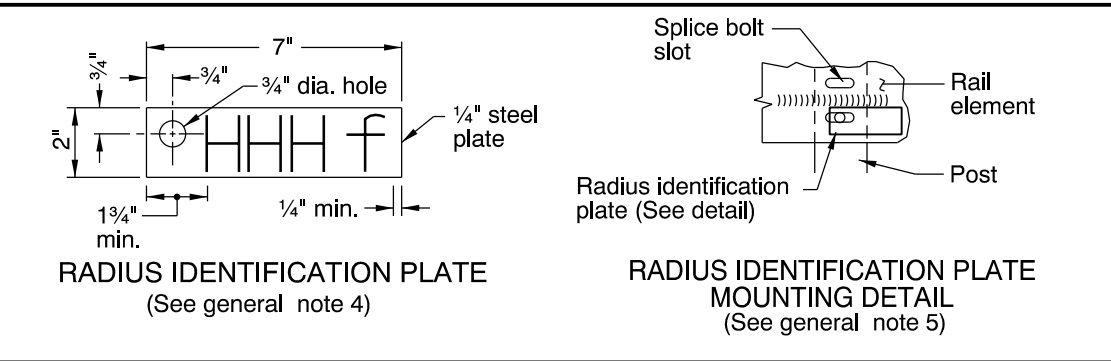
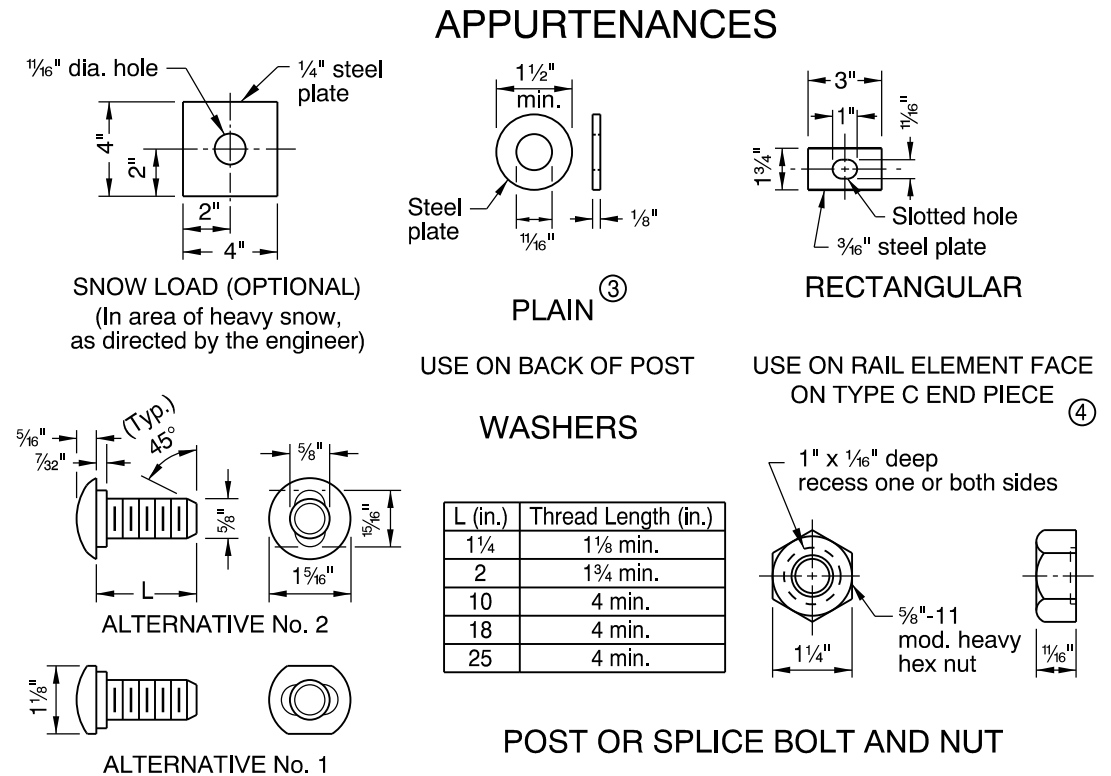
rd415.dgn 15-JAN-2016



- NOTES:**
- For guardrail installed on radii of 150' or less (5' min. radius) use rail elements pre-curved to industry standard. Install "Radius Identification Plate" (See detail right).
  - Effective length of rail sections shall be 12'-6".



- GENERAL NOTES FOR ALL DETAILS:**
- See appropriate guardrail standard drawing(s) for details not shown.
  - For details of guardrail connections to structural handrails, see special details or Standard Drawings as called for on plans.
  - All indicated welds shall attain the full strength of the section welded.
  - Radius dimensions, in feet to the nearest 0.5 foot, shall be placed on the plate with a raised weld bead replacing the letters "HHH", shown on the Radius Identification Plate detail. Digits shall be 1 1/2" min. height and 3/4" max. width. Plate shall be galvanized after placement of digits.
  - The guardrail radius identification plate is to be mounted on the back side of the rail element with the lowest splice bolt nearest the P.C. of the guardrail radius.



- NOTES:**
- Furnished & installed by structure contractor when shown on structure plans.
  - 6" min. penetration into concrete slabs other than bridge decks. Cast in place or core and install using approved resin bonding system.
  - Not required if "Snow Load" washer option is used.
  - Use rectangular washer under bolt head and nut on Type C End Piece as shown.

CALC. BOOK NO. N/A	BASELINE REPORT DATE 15-JAN-2016
NOTE: All material and workmanship shall be in accordance with the current Oregon Standard Specifications	
<b>OREGON STANDARD DRAWINGS</b>	
<b>GUARDRAIL AND METAL MEDIAN BARRIER PARTS</b>	
2015	
DATE	REVISION DESCRIPTION
01-2015	REVISED DETAILS & NOTES
01-2016	REVISED NOTES

The selection and use of this Standard Drawing, while designed in accordance with generally accepted engineering principles and practices, is the sole responsibility of the user and should not be used without consulting a Registered Professional Engineer.

RD415