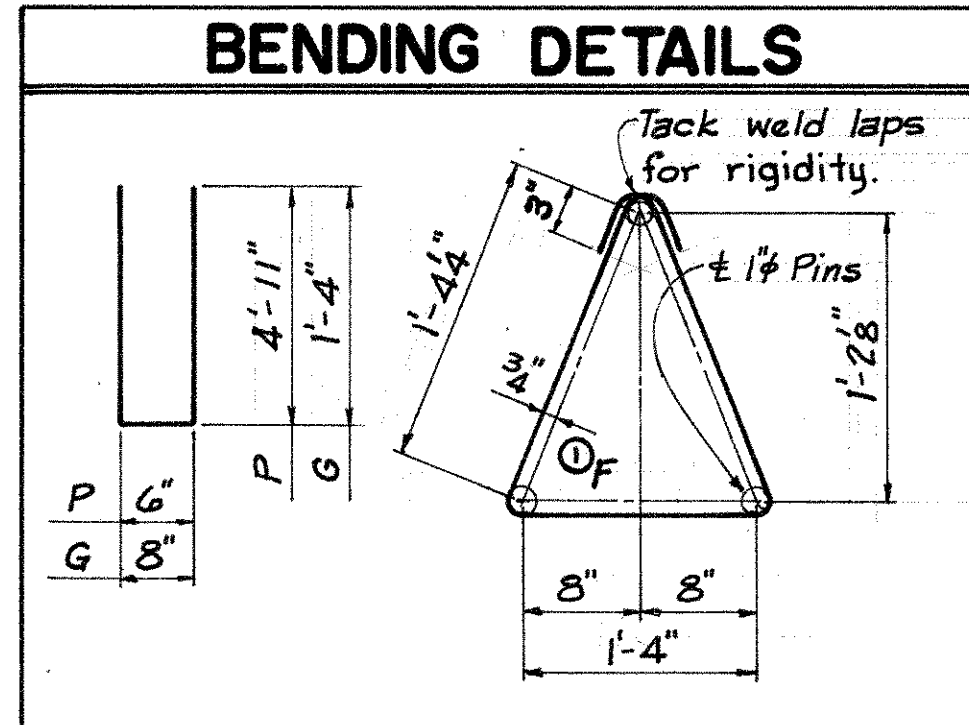


FED. RD. DIV. NO.	STATE	COUNTY	FILE NO.	ROUTE NO.	SHEET NO.	TOTAL SHEETS
3	S. C.	CHARLESTON	10.999	I-526	12	17

① An alternate method of supporting the top slab steel in lieu of F-bars detailed, may be used, subject to the approval of the Engineer. Any additional costs incurred shall be at the Contractor's expense. Any reduction in material costs realized shall be credited to the Department and so entered on the Final Estimate.

MARK	SIZE NO.	D	END SPAN	
			NO. REQ'D	LENGTH
A	10	S	55	29'-0"
B	10	S	44	24'-0"
C	5	S	35	29'-6"
D	5	S	68	47'-0"
E	6	S	16	29'-6"
①F	4	B	96	5'-1"
G	4	B	16	3'-4"
H	4	B	60	7'-2"
J	6	B	30	2'-11"
K	4	B	40	1'-9"
M	4	S	12	4'-6"
N	4	S	12	2'-6"
P	4	B	8	10'-4"
R	4	S	4	7'-6"
BB	1" Ht.	-	Req'd.	760'

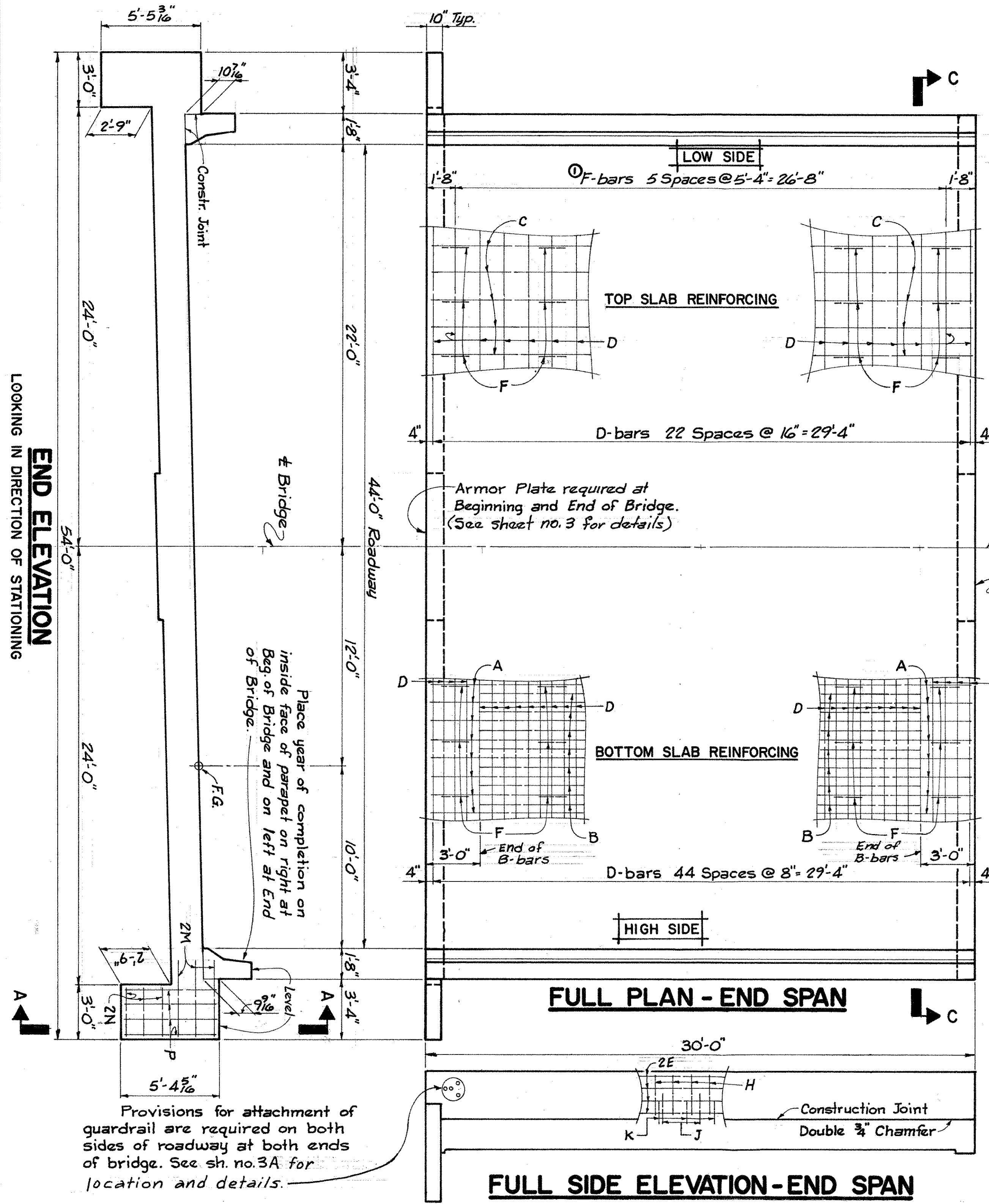


NOTE: For bending details not shown, see sheet no. 15.

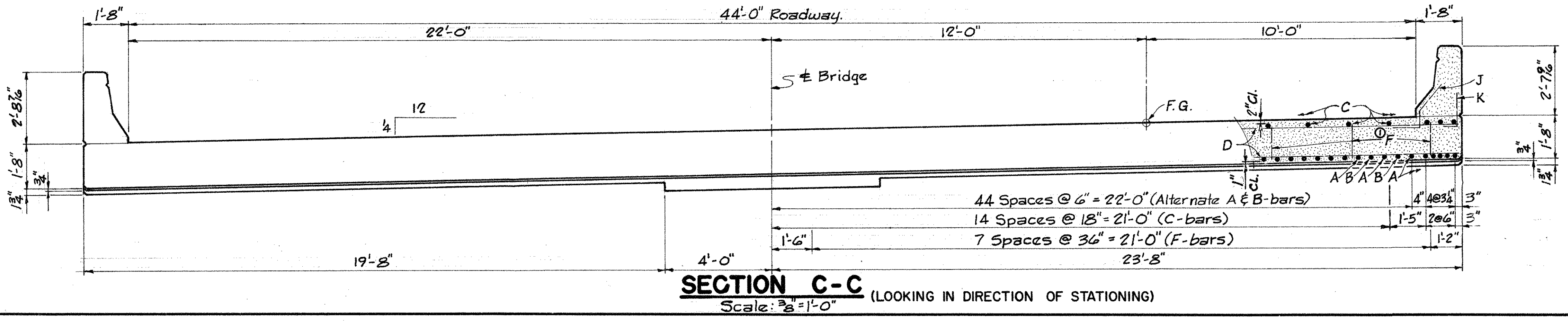
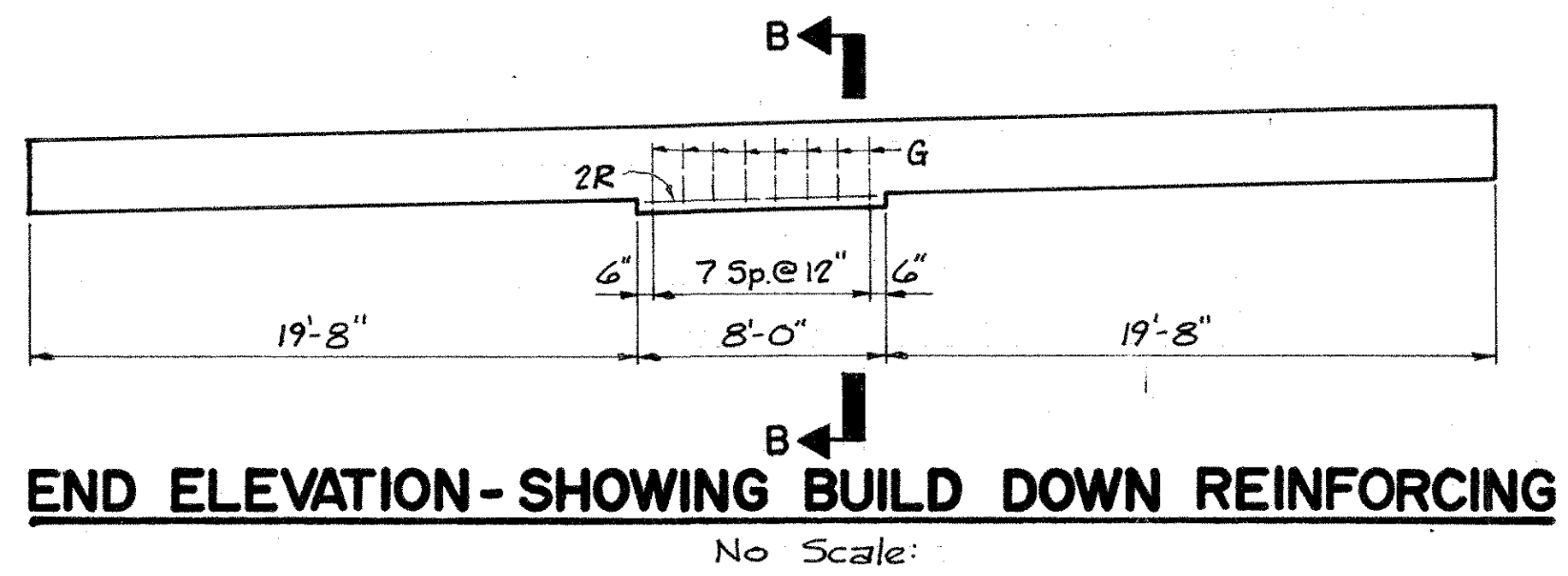
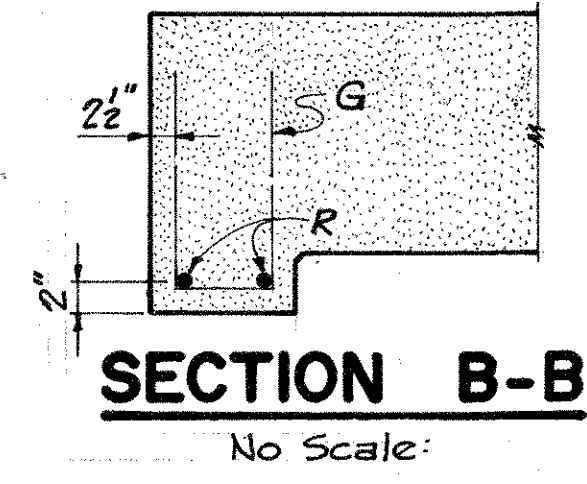
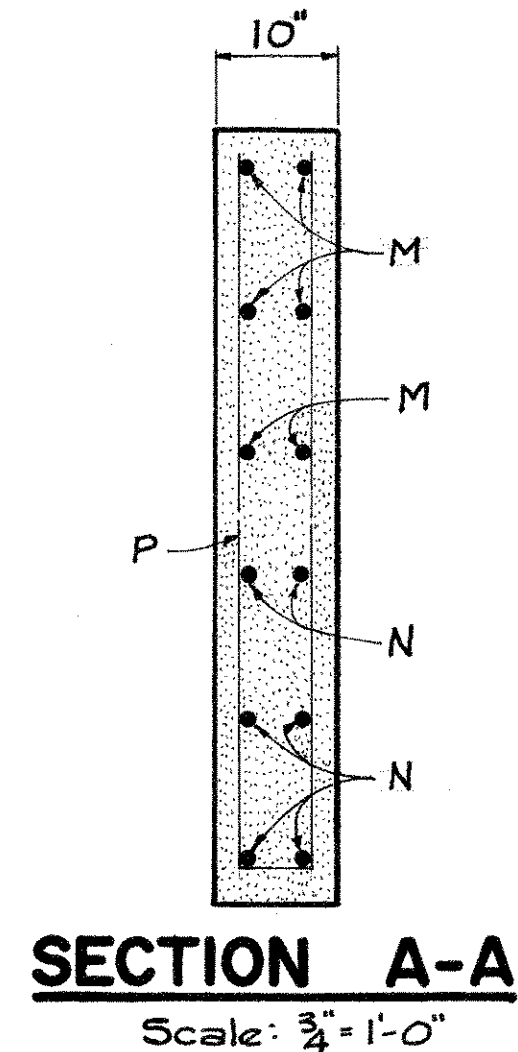
QUANTITIES		
ITEM	UNIT	30' END SPAN
Class "D" Concrete	C.Y.	89.4
Reinforcing Steel	Lbs.	* 17,761
Conc. Br. Barrier Parapet	L.F.	60

*Includes 158 Lbs. for bolsters.

NOTES:
 For standard notes, see sheet no. 2.
 For standard details, see sheet no. 3.
 For Parapet details, see sheet no. 15.
 No parapet concrete shall be cast until slab falsework has been struck.
 Wings to be cast monolithic with slab. Allow a 5 day interval between pouring slabs and parapet.

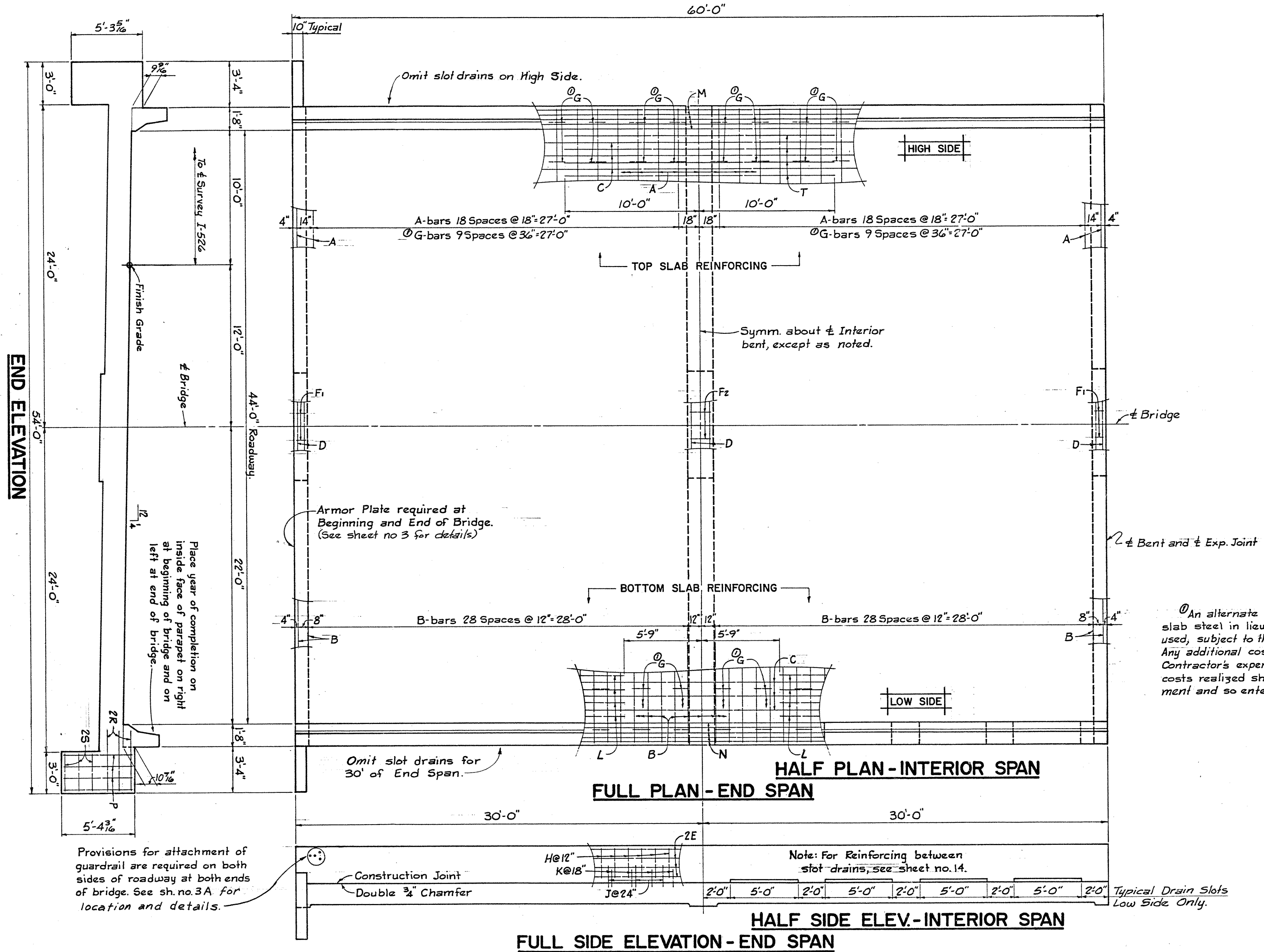


Note: No slot drains required in End Span.



REV.					
REV.					
REV.					
REV.					
REVIEWED					
QUAN.	RRC	BRM	6-84		
TR.					
DR.	DWM	RRC	6-84		
DES.					
BY	CHK'D	DATE			

Scale: 1/4" = 1'-0" or as noted.
 S. C. DEPARTMENT OF HIGHWAYS AND PUBLIC TRANSPORTATION
 BRIDGE DIVISION COLUMBIA, S.C.
30' SPAN SUPERSTRUCTURE DUAL BRIDGES NO. 3 OVER TIDAL CREEK WEST BOUND LANE
 FILE NO. 10.999 COUNTY CHARLESTON ROUTE NO. I-526 DATE 6-84
 APPROVED BY [Signature] ASST. BRIDGE ENGINEER - DESIGN
 APPROVED BY [Signature] BRIDGE ENGINEER - DESIGN



BENDING DETAILS			REINFORCING STEEL SCHEDULE			
MARK	SIZE No.	D	END SPAN		INTERIOR SPAN	
			No. Req'd.	LENGTH	No. Req'd.	LENGTH
A	5	S	41	47'-0"	41	47'-0"
B	6	S	61	47'-0"	61	47'-0"
C	7	S	86	59'-6"	86	59'-6"
D	4	S	6	7'-6"	6	7'-6"
E	6	S	16	59'-6"	16	59'-6"
F1	4	B	16	3'-4"	16	3'-4"
F2	4	B	8	4'-4"	8	4'-4"
OG	4	B	320	4'-5"	320	4'-5"
H	4	B	122	7'-2"	122	7'-2"
J	6	B	60	2'-11"	60	2'-11"
K	4	B	70	1'-9"	60	1'-9"
L	10	S	88	24'-1"	88	24'-1"
M	11	S	10	59'-6"	10	59'-6"
N	10	S	10	59'-6"	10	59'-6"
P	4	B	8	10'-2"		
R	4	S	12	4'-6"		
S	4	S	12	2'-6"		
T	11	S	44	20'-0"	44	20'-0"
BB	1" Ht.		Req'd.	1470'	Req'd.	1470'

Note: For bending details not shown, see sheet no. 15.

QUANTITIES			
ITEM	UNIT	END SPAN	INTERIOR SPAN
CLASS "D" CONCRETE	C.Y.	168.9	167.9
REINFORCING STEEL	Lbs.	* 40,100	* 39,989
CONC. BR. BARRIER PARAPET	L.F.	120	120

*Includes 306 Lbs. for bolsters.

① An alternate method of supporting the top slab steel in lieu of G-bars detailed, may be used, subject to the approval of the Engineer. Any additional costs incurred shall be at the Contractor's expense. Any reduction in material costs realized shall be credited to the Department and so entered on the Final Estimate.

NOTES:
 For Standard Notes, see sheet no. 2.
 For Standard Details, see sheet no. 3.
 No parapet concrete shall be cast until slab false-work has been struck.
 Wings to be cast monolithic with slab. Allow a 5 day interval between pouring slab and parapet.

Scale: 1/4" = 1'-0"

REV.				
REV.				
REV.				
REV.				
REVIEWED				
IN CHARGE				
QUAN.	RRC	BRM	6-86	
TR.				
DR.	DWM	RRC	6-84	
DES.	From	40.836.1		
BY	CHK'D	DATE		

S. C. DEPARTMENT OF HIGHWAYS AND PUBLIC TRANSPORTATION
 BRIDGE DIVISION COLUMBIA, S.C.

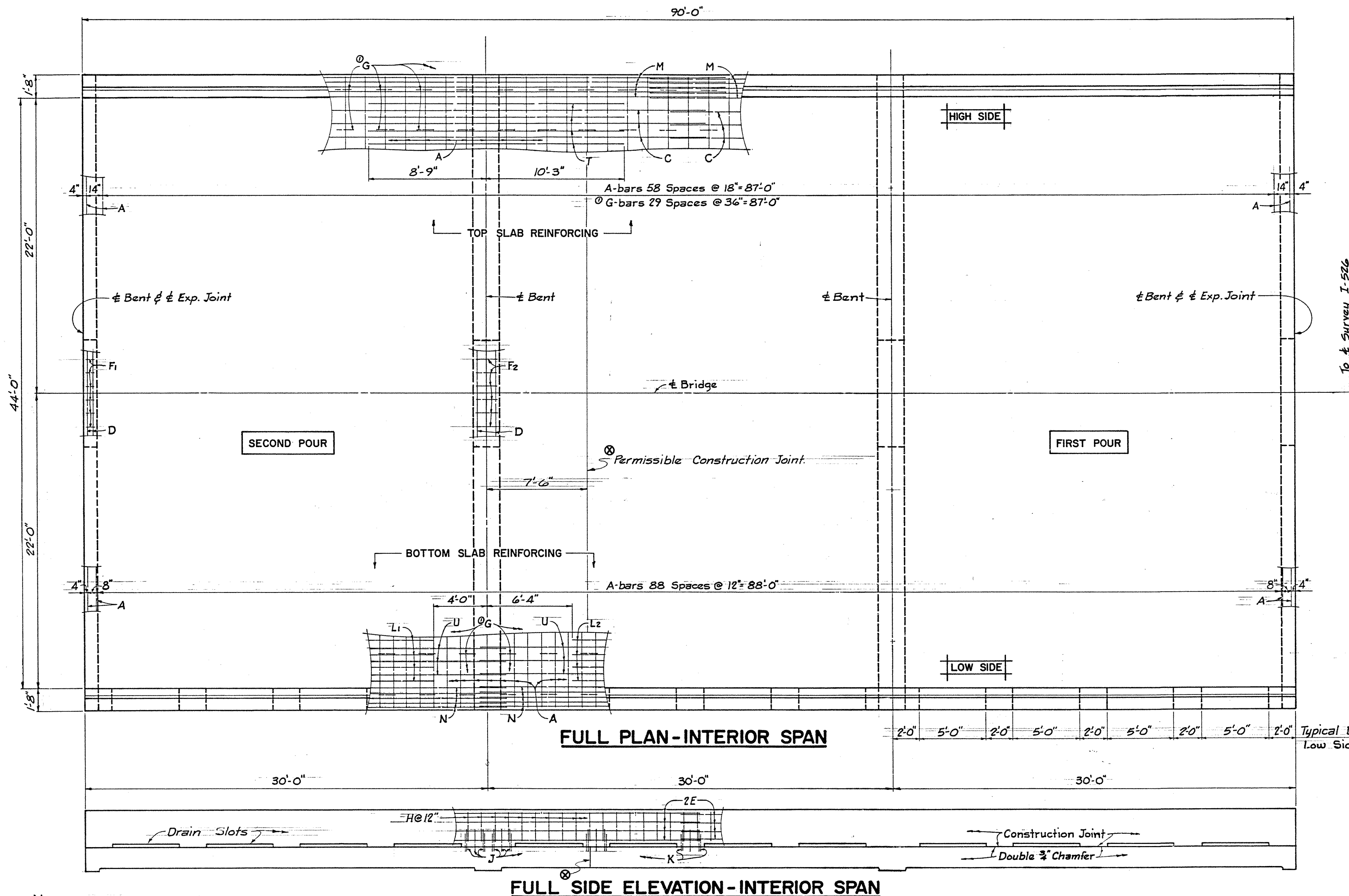
**60' SPAN SUPERSTRUCTURE
 DUAL BRIDGES NO. 3 OVER
 TIDAL CREEK
 EAST BOUND LANE**

FILE NO.	COUNTY	ROUTE NO.	DATE
10.999	CHARLESTON	I-526	6-84

APPROVED BY: [Signature] ASST. BRIDGE ENGINEER - DESIGN

APPROVED BY: [Signature] BRIDGE ENGINEER - DESIGN

FED. RD. DIV. NO.	STATE	COUNTY	FILE NO.	ROUTE NO.	SHEET NO.	TOTAL SHEETS
3	S. C.	CHARLESTON	10.999	I-526	14	17



BENDING DETAILS		REINF. STEEL SCHED.																																																																																												
		<table border="1"> <thead> <tr> <th rowspan="2">MARK</th> <th rowspan="2">SIZE No.</th> <th rowspan="2">D.</th> <th colspan="2">INTERIOR SPAN</th> </tr> <tr> <th>No. REQ'D.</th> <th>LENGTH</th> </tr> </thead> <tbody> <tr><td>A</td><td>5</td><td>S</td><td>152</td><td>47'-0"</td></tr> <tr><td>C</td><td>7</td><td>S</td><td>86</td><td>45'-8"</td></tr> <tr><td>D</td><td>4</td><td>S</td><td>8</td><td>7'-6"</td></tr> <tr><td>E</td><td>6</td><td>S</td><td>32</td><td>45'-7"</td></tr> <tr><td>F1</td><td>4</td><td>B</td><td>16</td><td>3'-4"</td></tr> <tr><td>F2</td><td>4</td><td>B</td><td>16</td><td>4'-4"</td></tr> <tr><td>G</td><td>4</td><td>B</td><td>480</td><td>4'-5"</td></tr> <tr><td>H</td><td>4</td><td>B</td><td>180</td><td>7'-2"</td></tr> <tr><td>J</td><td>6</td><td>B</td><td>90</td><td>2'-11"</td></tr> <tr><td>K</td><td>4</td><td>B</td><td>90</td><td>1'-9"</td></tr> <tr><td>L1</td><td>10</td><td>S</td><td>88</td><td>25'-10"</td></tr> <tr><td>L2</td><td>7</td><td>S</td><td>44</td><td>17'-4"</td></tr> <tr><td>M</td><td>10</td><td>S</td><td>20</td><td>46'-1"</td></tr> <tr><td>N</td><td>10</td><td>S</td><td>30</td><td>31'-7"</td></tr> <tr><td>T</td><td>10</td><td>S</td><td>88</td><td>19'-0"</td></tr> <tr><td>U</td><td>7</td><td>S</td><td>129</td><td>31'-0"</td></tr> <tr><td>BB</td><td>1" Hr.</td><td>-</td><td>Req'd.</td><td>2180'</td></tr> </tbody> </table>	MARK	SIZE No.	D.	INTERIOR SPAN		No. REQ'D.	LENGTH	A	5	S	152	47'-0"	C	7	S	86	45'-8"	D	4	S	8	7'-6"	E	6	S	32	45'-7"	F1	4	B	16	3'-4"	F2	4	B	16	4'-4"	G	4	B	480	4'-5"	H	4	B	180	7'-2"	J	6	B	90	2'-11"	K	4	B	90	1'-9"	L1	10	S	88	25'-10"	L2	7	S	44	17'-4"	M	10	S	20	46'-1"	N	10	S	30	31'-7"	T	10	S	88	19'-0"	U	7	S	129	31'-0"	BB	1" Hr.	-	Req'd.	2180'
MARK	SIZE No.	D.				INTERIOR SPAN																																																																																								
			No. REQ'D.	LENGTH																																																																																										
A	5	S	152	47'-0"																																																																																										
C	7	S	86	45'-8"																																																																																										
D	4	S	8	7'-6"																																																																																										
E	6	S	32	45'-7"																																																																																										
F1	4	B	16	3'-4"																																																																																										
F2	4	B	16	4'-4"																																																																																										
G	4	B	480	4'-5"																																																																																										
H	4	B	180	7'-2"																																																																																										
J	6	B	90	2'-11"																																																																																										
K	4	B	90	1'-9"																																																																																										
L1	10	S	88	25'-10"																																																																																										
L2	7	S	44	17'-4"																																																																																										
M	10	S	20	46'-1"																																																																																										
N	10	S	30	31'-7"																																																																																										
T	10	S	88	19'-0"																																																																																										
U	7	S	129	31'-0"																																																																																										
BB	1" Hr.	-	Req'd.	2180'																																																																																										
<p>Note: For bending details not shown, see sheet no. 15.</p>		<table border="1"> <thead> <tr> <th colspan="3">QUANTITIES</th> </tr> <tr> <th>ITEM</th> <th>UNIT</th> <th>INTERIOR SPAN</th> </tr> </thead> <tbody> <tr> <td>CLASS "D" CONCRETE</td> <td>C.Y.</td> <td>251.8</td> </tr> <tr> <td>REINFORCING STEEL</td> <td>LBS.</td> <td>* 55,775</td> </tr> <tr> <td>CONC. BR. BARRIER PARAPET</td> <td>L.F.</td> <td>180</td> </tr> </tbody> </table> <p>*Includes 453 Lbs. for bolsters.</p>	QUANTITIES			ITEM	UNIT	INTERIOR SPAN	CLASS "D" CONCRETE	C.Y.	251.8	REINFORCING STEEL	LBS.	* 55,775	CONC. BR. BARRIER PARAPET	L.F.	180																																																																													
QUANTITIES																																																																																														
ITEM	UNIT	INTERIOR SPAN																																																																																												
CLASS "D" CONCRETE	C.Y.	251.8																																																																																												
REINFORCING STEEL	LBS.	* 55,775																																																																																												
CONC. BR. BARRIER PARAPET	L.F.	180																																																																																												

To Survey I-526

Typical Drain Slots Low Side Only.

NOTES:
 For Standard Notes, see sheet no. 2.
 For Standard Details, see sheet no. 3.
 No parapet concrete shall be cast until slab falsework has been struck.

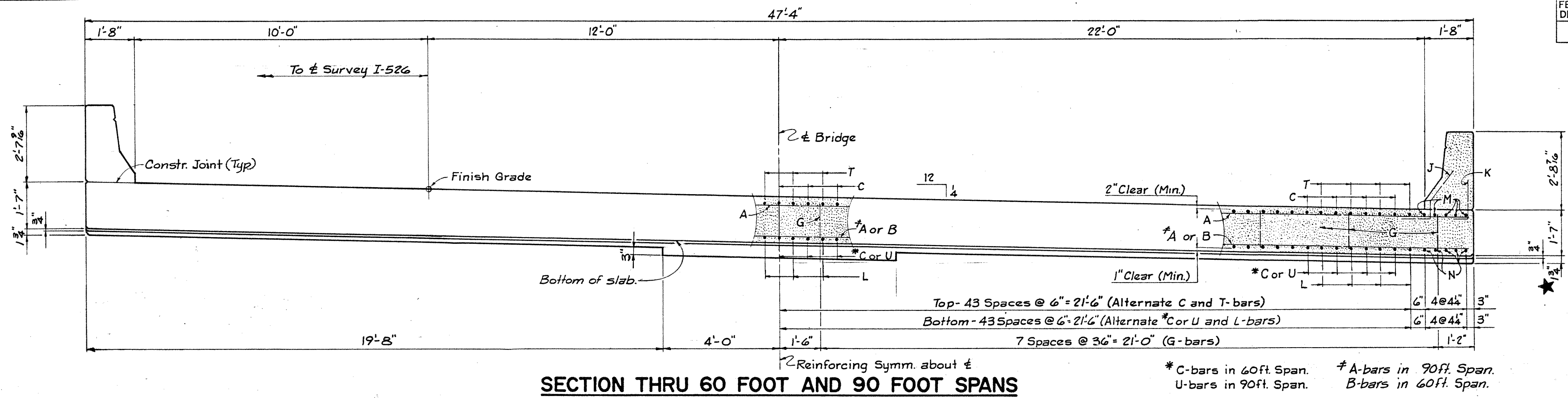
NOTES:
 The 90' Continuous Span may be cast in one pour from one end of span to the other using a suitable screed.
 An approved retarding agent will be used and the contractor must establish a pouring rate of at least 50 cubic yards per hour.
 No slab falsework shall be removed until the entire 90' span has been poured and cured according to the Standard Specification.
 Permissible Construction Joint shall be bushhammered or roughened by other methods as approved by the Engineer and in accordance with para. 702.16 of the S.C.D.H.P.T. Specifications. A 36 hour interval will be required between pours.

BAR SPLICES
 Splice C-bars 1'-8" min. @ 1/2 Span.
 Splice E-bars 1'-6" min. @ 1/2 Span.
 Splice M-bars 2'-6" min. @ 1/2 Span.
 Splice N-bars 2'-6" min. @ 1/3 points.
 Splice U-bars 1'-8" min. @ 1/3 points

Scale: 1/4" = 1'-0"

REV.		S. C. DEPARTMENT OF HIGHWAYS AND PUBLIC TRANSPORTATION BRIDGE DIVISION COLUMBIA, S.C.			
REV.		90' SPAN SUPERSTRUCTURE DUAL BRIDGES NO. 3 OVER TIDAL CREEK WEST BOUND LANE			
REV.		FILE NO.	COUNTY	ROUTE NO.	DATE
REV.		10.999	CHARLESTON	I-526	6-84
REVIEWED	JAB	APPROVED BY			
IN CHARGE	JAB	APPROVED BY			
QUAN.	RRC	DES. From 32.594.2			
TR.	BRN	ASST. BRIDGE ENGINEER-DESIGN			
DR.	DW.M.	BRIDGE ENGINEER-DESIGN			
DES.	From 32.594.2				

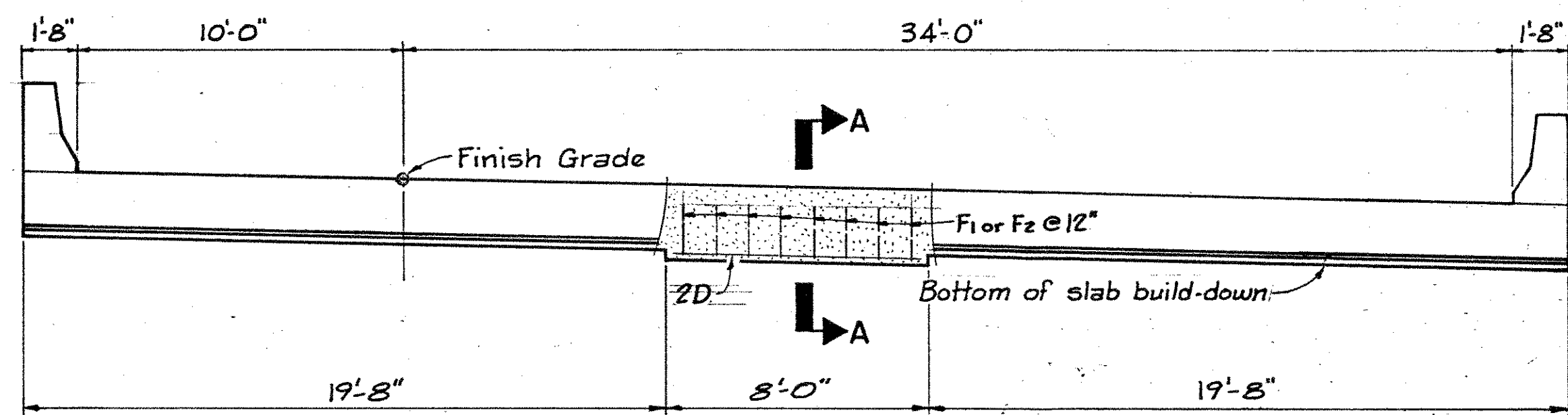
FED. RD. DIV. NO.	STATE	COUNTY	FILE NO.	ROUTE NO.	SHEET NO.	TOTAL SHEETS
3	S. C.	CHARLESTON	10.999	I-526	15	17



SECTION THRU 60 FOOT AND 90 FOOT SPANS

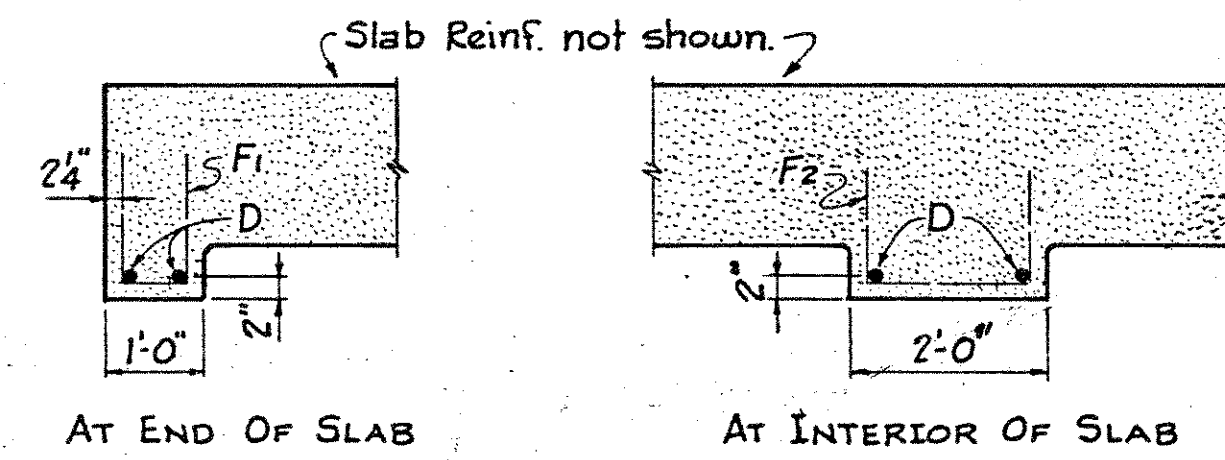
* C-bars in 60ft. Span. * A-bars in 90ft. Span.
 U-bars in 90ft. Span. B-bars in 60ft. Span.

★ BUILD - DOWN
 2 3/4" @ Bent 2 for 90' Span (W.B.L.)
 2 3/4" @ Bent 11 for 90' Span (W.B.L.)

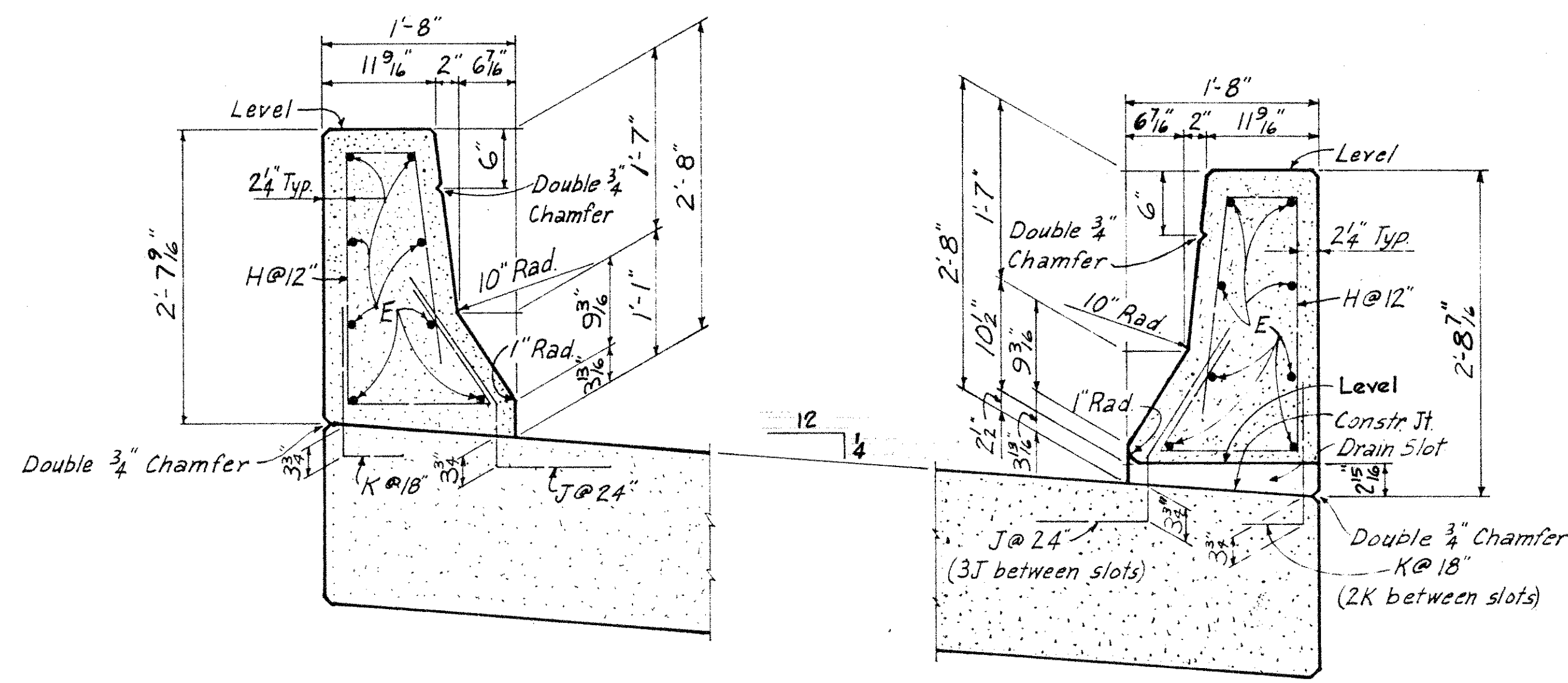


SECTION THRU SLAB SHOWING BUILD-DOWN REINFORCING

Scale: 1/4" = 1'-0"
 FOR 60' AND 90' SPANS



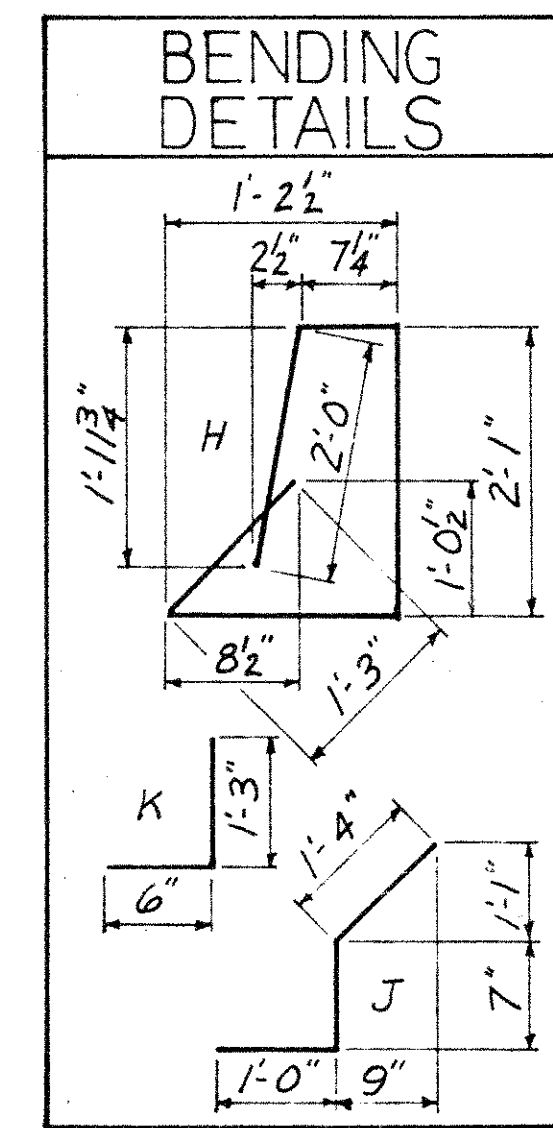
SECTION A-A



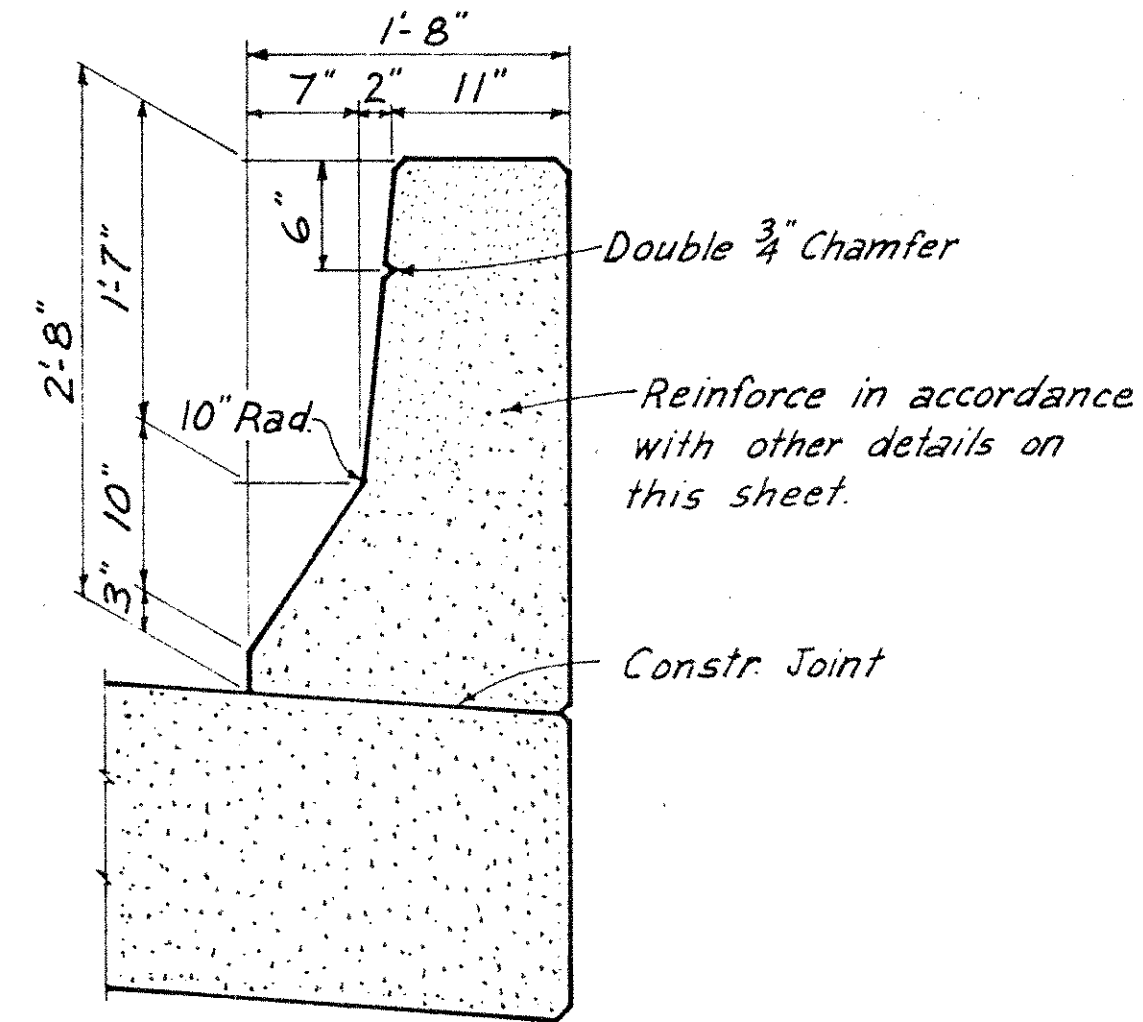
BARRIER PARAPET DETAILS

Scale: 1/2" = 1'-0"

NOTE: Barrier Parapets may be C.I.P. or Slip-Formed.



BENDING DETAILS



ALTERNATE BARRIER PARAPET
 (FROM NORTH CAROLINA STANDARD)

Note: Any rebending or other adjustments to reinforcing steel due to selection of this alternate shall be at the Contractor's expense.

NOTES:
 For Standard Notes, see sheet no. 2.
 For Standard Details, see sheet no. 3.

Scale: 1/2" = 1'-0" or as noted.					
S. C. DEPARTMENT OF HIGHWAYS AND PUBLIC TRANSPORTATION BRIDGE DIVISION COLUMBIA, S.C.					
SUPERSTRUCTURE DETAILS					
DUAL BRIDGES NO. 3 OVER TIDAL CREEK					
EAST AND WEST BOUND LANES					
REV.					
REV.					
REV.					
REV.					
REVIEWED	<i>DWB</i>				
QUAN.					
TR.					
DR.	DWM/HRL 6-84	FILE NO.	10.999	COUNTY	CHARLESTON
DES.	SEE SHEETS 13 & 14	ROUTE NO.	I-526	DATE	6-84
BY	ICHK/D/DATE	APPROVED BY		APPROVED BY	
		ASST. BRIDGE ENGINEER - DESIGN		BRIDGE ENGINEER - DESIGN	