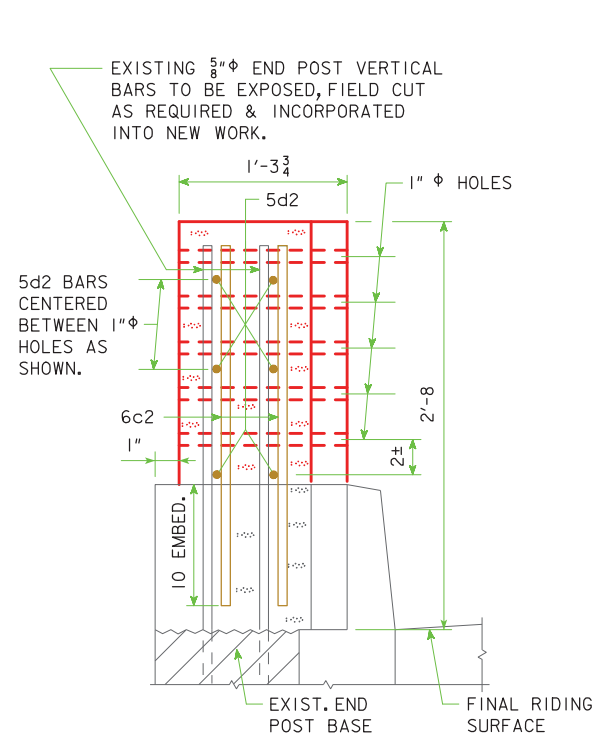


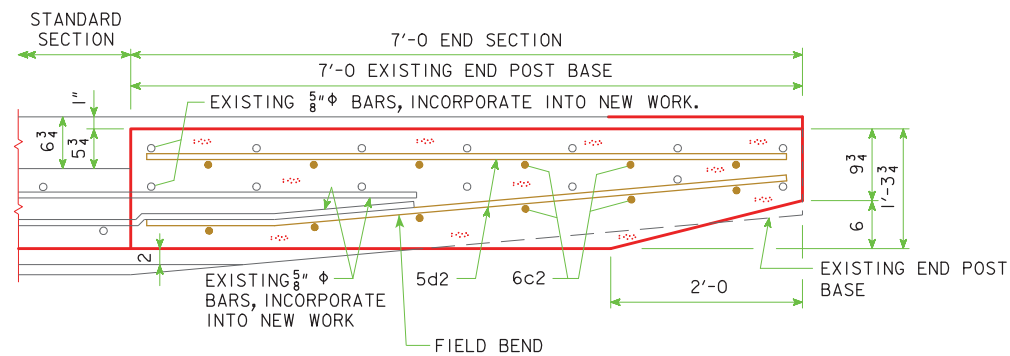
ELEVATION NEAR GUTTERLINE

EPOXY REINFORCING STEEL- TWO RAILS					
BAR	LOCATION	SHAPE	NO.	LENGTH	WEIGHT
6c1	END SECTION, VERTICAL		24	2'-5	87
5d2	END SECTION, LONGIT.		12	6'-8	84
REINFORCING STEEL - EPOXY COATED - TOTAL (LBS.)					171

CONCRETE PLACEMENT SUMMARY		
SECTION		TOTAL
END SECTIONS	4 AT 0.61 CU. YDS. PER SECTION	2.44
TOTAL, TWO RAILS (CU. YDS.)		2.4



SECTION A-A



SECTION B-B  
(SHOWING 6c2 PLACEMENT)

**DOWEL SETTING NOTE :**

THE 6c1 BARS SHALL BE SET AS DOWELS IN DRILLED HOLES. HOLES ARE TO BE 10" DEEP. THE DOWELS SHALL BE INSTALLED IN ACCORDANCE WITH THE MANUFACTURER'S RECOMMENDATIONS. EITHER OF THE FOLLOWING SYSTEMS MAY BE USED AS A BONDING AGENT FOR VERTICAL DOWELS, BUT ONLY SYSTEM "A" MAY BE USED FOR HORIZONTAL DOWELS:

A. POLYMER GROUT SYSTEM SHALL BE IN ACCORDANCE WITH ARTICLE 2301.03, E, OF THE STANDARD SPECIFICATIONS.

B. HYDRAULIC CEMENT GROUT SYSTEMS. DRILLED HOLES ARE TO BE 2 1/2 TIMES THE DOWEL DIAMETER AND ARE TO BE BLOWN CLEAN WITH COMPRESSED AIR IMMEDIATELY PRIOR TO PLACING GROUT. THE HYDRAULIC CEMENT GROUT SHALL BE ONE OF THOSE APPROVED IN MATERIALS I.M. 491.13 AND SHALL BE USED IN ACCORDANCE WITH THE MANUFACTURER'S RECOMMENDATIONS.



DESIGN FOR REPAIRS TO A 15° SKEW (R.A.)

**253'-0x56'-0 PRETENSIONED  
PRESTRESSED CONC. BM. BRIDGE**

85'-9 & 80'-9 END SPANS 86'-6 INTERIOR SPAN

**BARRIER END SECTIONS**

STA. 9+20.74 NOVEMBER, 2014

**POLK COUNTY**

IOWA DEPARTMENT OF TRANSPORTATION - HIGHWAY DIVISION

DESIGN SHEET NO. 5 OF 7 FILE NO. 30951 DESIGN NO. 315