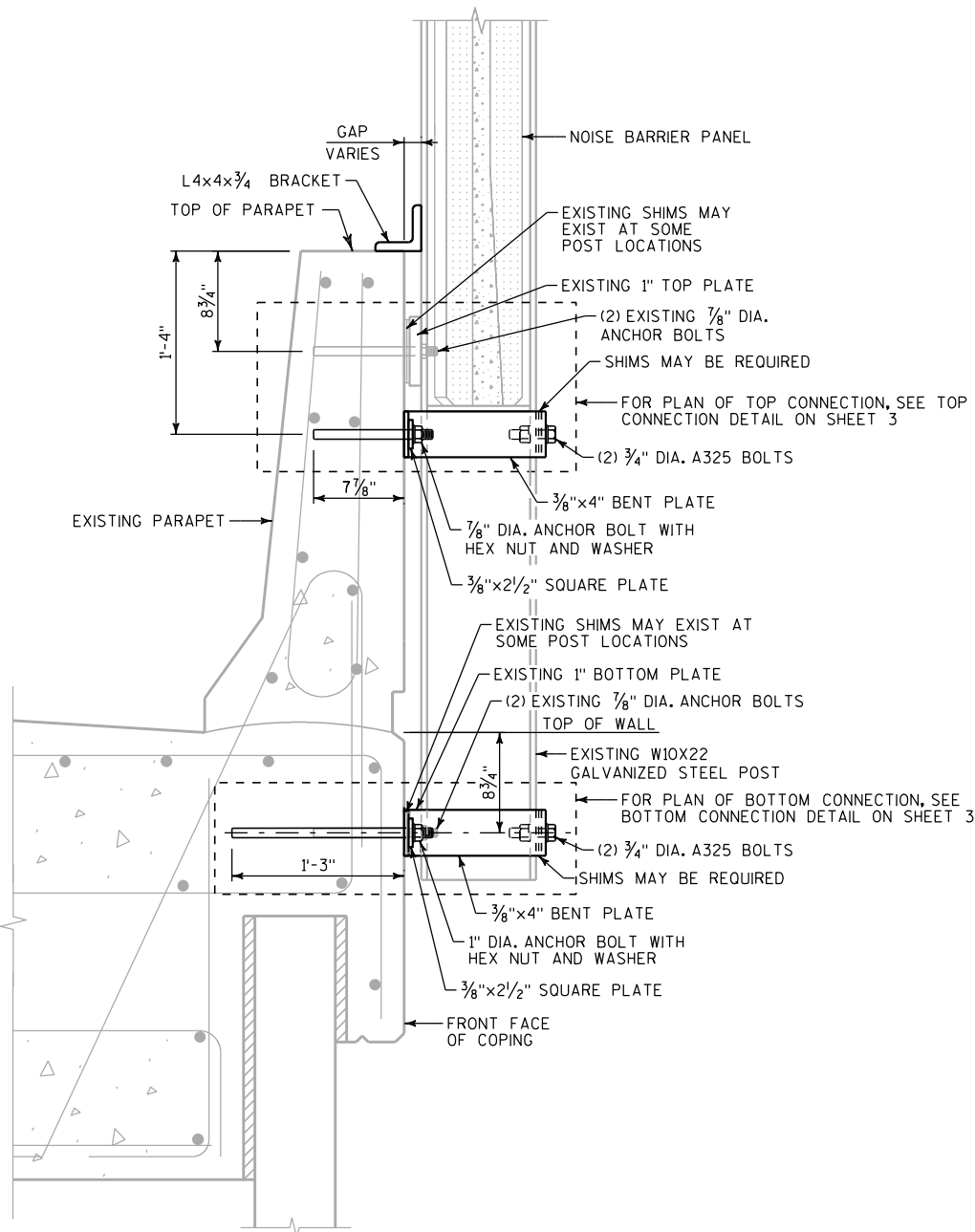


ELEVATION AT NOISE BARRIER POST
LOOKING AT RESIDENTIAL SIDE OF WALL

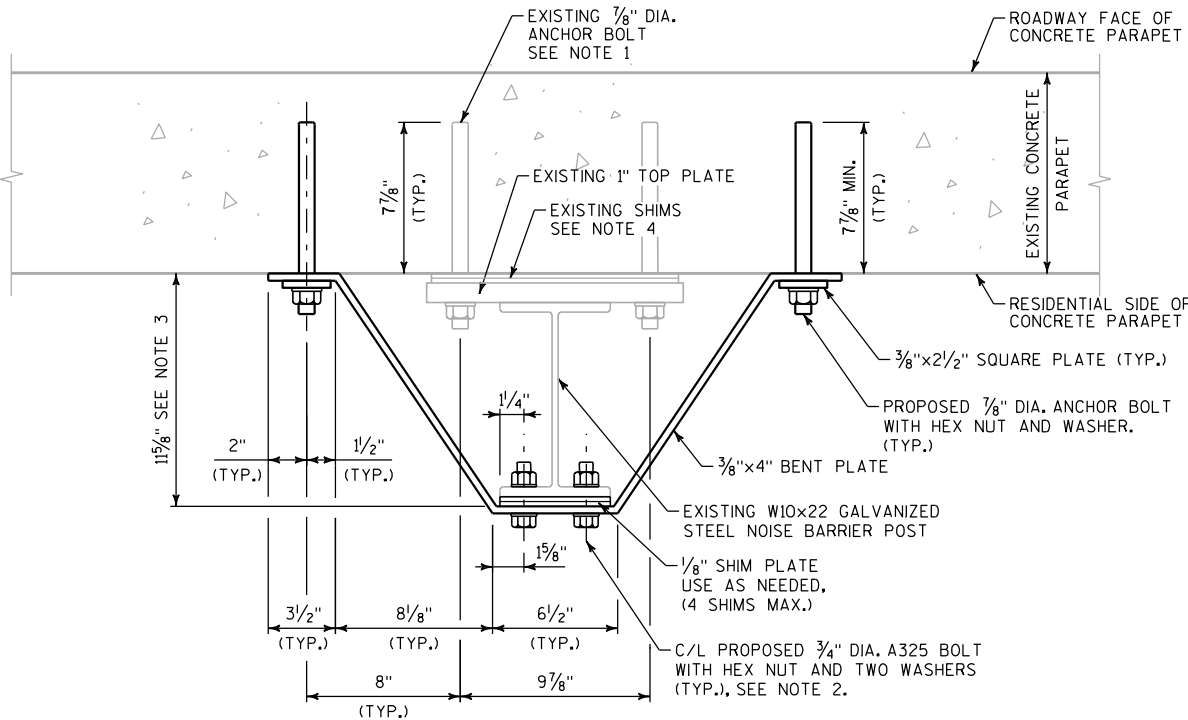


SECTION AT NOISE BARRIER POST



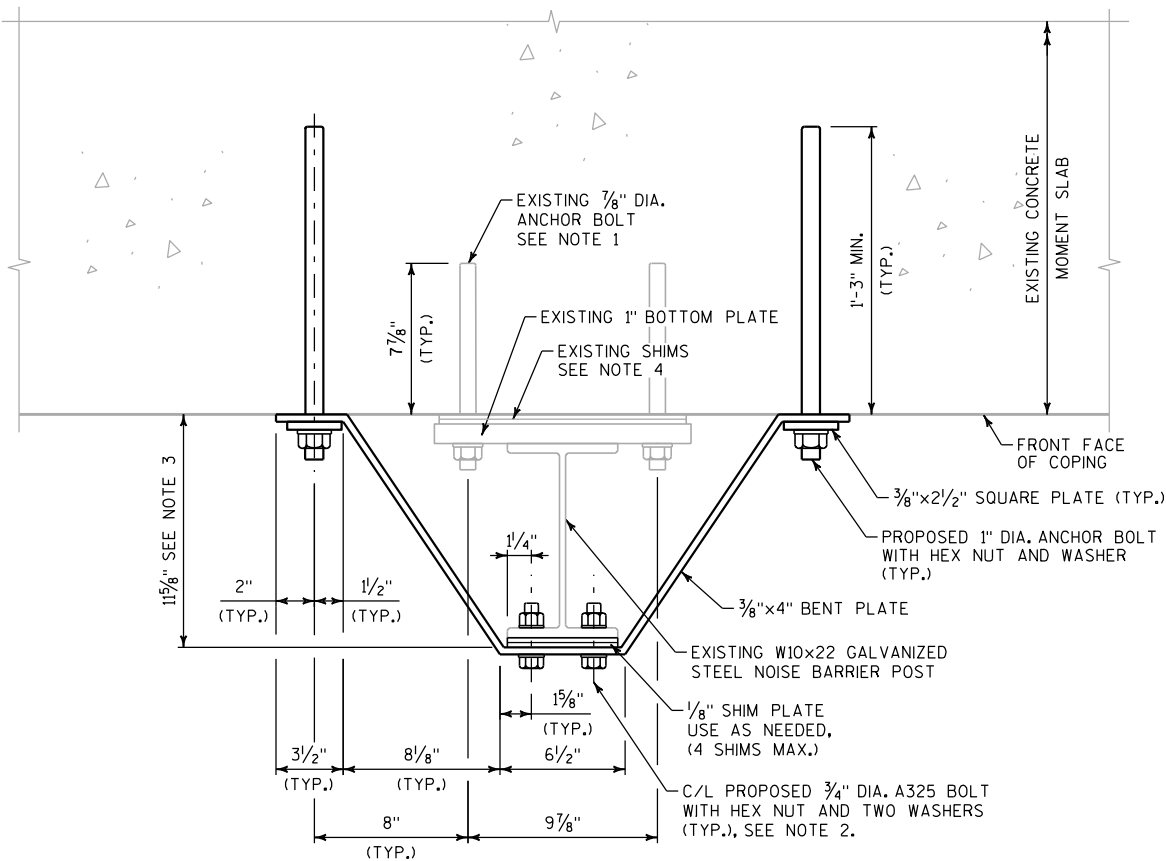
NO.	6/21/12	NEW SHEET	BKS
DATE		REVISION	BY
STATE OF WISCONSIN DEPARTMENT OF TRANSPORTATION STRUCTURES DESIGN SECTION			
N-40-40/42/43/46/47/52/53/54			
	DRAWN BY	GLM	PLANS CK'D. BKS
NOISE BARRIER POST 2/2 (15') CONNECTION DETAILS (1 OF 2)			SHEET 2 OF 11

2/2 CONNECTION DETAILS FOR 15' POST SPACING



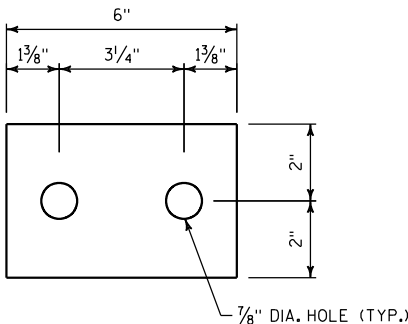
TOP CONNECTION DETAIL

PLAN VIEW SHOWING EXISTING
AND PROPOSED ANCHORS

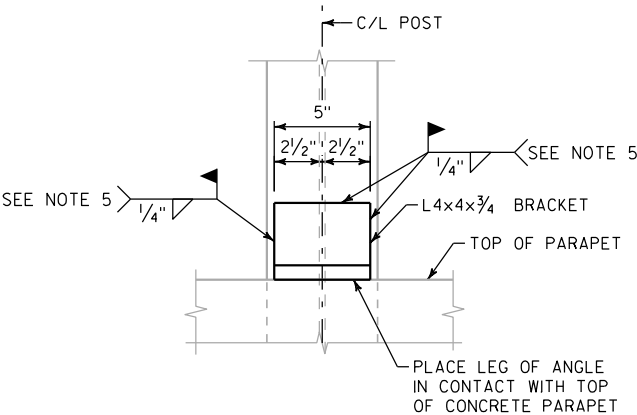


BOTTOM CONNECTION DETAIL

PLAN VIEW SHOWING EXISTING
AND PROPOSED ANCHORS



1/8" SHIM PLATE DETAIL



BRACKET CONNECTION DETAIL

NOTES

- EXISTING ANCHOR BOLTS ARE HILTI HAS SUPER THREADED ROD (ASTM A193 B7) WITH HIT-RE 500 EPOXY ADHESIVE.
- FIELD DRILL THRU EXISTING GALVANIZED STEEL NOISE BARRIER POST. REPAIR GALVANIZED COATING IN EXISTING NOISE BARRIER POST PER ASTM A780.
- DIMENSION SHOWN PROVIDES FOR A TOTAL (EXISTING AND PROPOSED) SHIM THICKNESS OF 1/2". IF EXISTING SHIM THICKNESS EXCEEDS 1/2", THEN BENT PLATE LENGTH WILL NEED TO BE ADJUSTED.
- EXISTING SHIMS MAY EXIST AT SOME POST LOCATIONS. COORDINATE EXISTING SHIM THICKNESS WITH PROPOSED SHIMS AS NOTED IN NOTE 3.
- GRIND OFF EXISTING PAINT ON POST PRIOR TO WELDING. AFTER WELDING, REPAIR GALVANIZED COATING PER ASTM A780.



6/21/12	NEW SHEET	BKS
NO.	DATE	REVISION
STATE OF WISCONSIN DEPARTMENT OF TRANSPORTATION STRUCTURES DESIGN SECTION		
N-40-40/42/43/46/47/52/53/54		
DRAWN BY	GLM	PLANS CK'D. BKS
NOISE BARRIER POST 2/2 (15') CONNECTION DETAILS (2 OF 2)		SHEET 3 OF 11

2/2 CONNECTION DETAILS FOR 15' POST SPACING