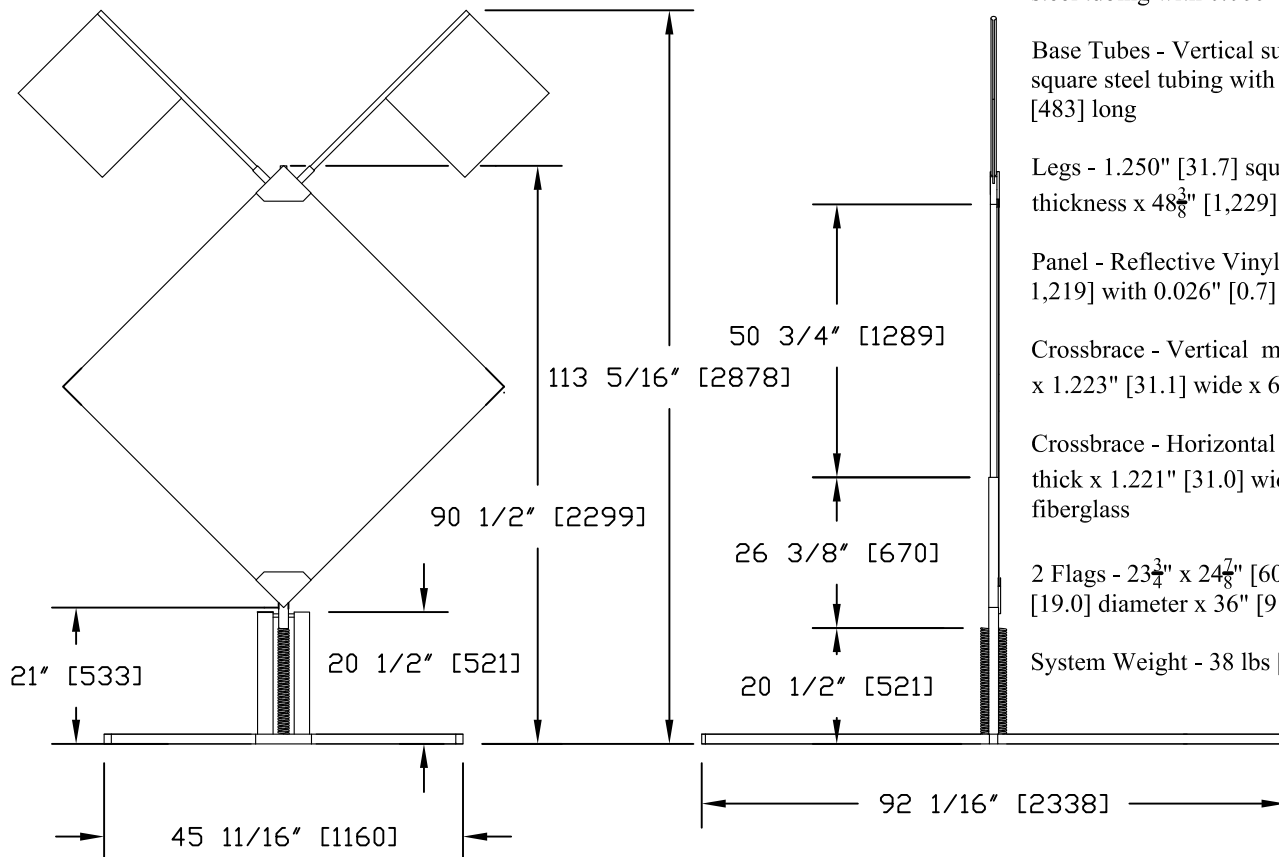
	WZ09-3A	SHEET: 1 of 4
	Double Vertical Springs with a 48" Aluminum Sign Panel Mounted at 18" from Ground	DATE: 10/29/2009
DWG. NAME: WZ09-3A_R6	SCALE: None UNITS: Inches [mm]	DRAWN BY: RJT REV. BY: JDS/KAL
Midwest Roadside Safety Facility		



Base - Steel with dual extension springs

Mast - 2 stage telescoping, lower stage is 1.250" [31.8] square steel tubing with 0.080" [2.0] wall thickness and upper stage is 0.998" [25.4] square steel tubing with 0.066" [1.7] wall thickness

Base Tubes - Vertical support tubes 1.253" [31.8] square steel tubing with 0.076" [1.9] thickness x 19" [483] long

Legs - 1.250" [31.7] square x 0.097" [2.5] wall thickness x 48 3/8" [1,229] long aluminum tubing

Panel - Reflective Vinyl Rollup, 48" x 48" [1,219 x 1,219] with 0.026" [0.7] thickness

Crossbrace - Vertical member is 0.245" [6.2] thick x 1.223" [31.1] wide x 65 1/2" [1,664] long fiberglass

Crossbrace - Horizontal member is 0.183" [4.6] thick x 1.221" [31.0] wide x 65 1/2" [1,664] long fiberglass

2 Flags - 23 3/4" x 24 7/8" [603 x 632] vinyl with 0.749" [19.0] diameter x 36" [914] long wood staffs

System Weight - 38 lbs [17.2 kg]

50 3/4" [1289]

113 5/16" [2878]

90 1/2" [2299]

26 3/8" [670]

20 1/2" [521]

21" [533]

20 1/2" [521]

45 11/16" [1160]

92 1/16" [2338]



WZ09-3B

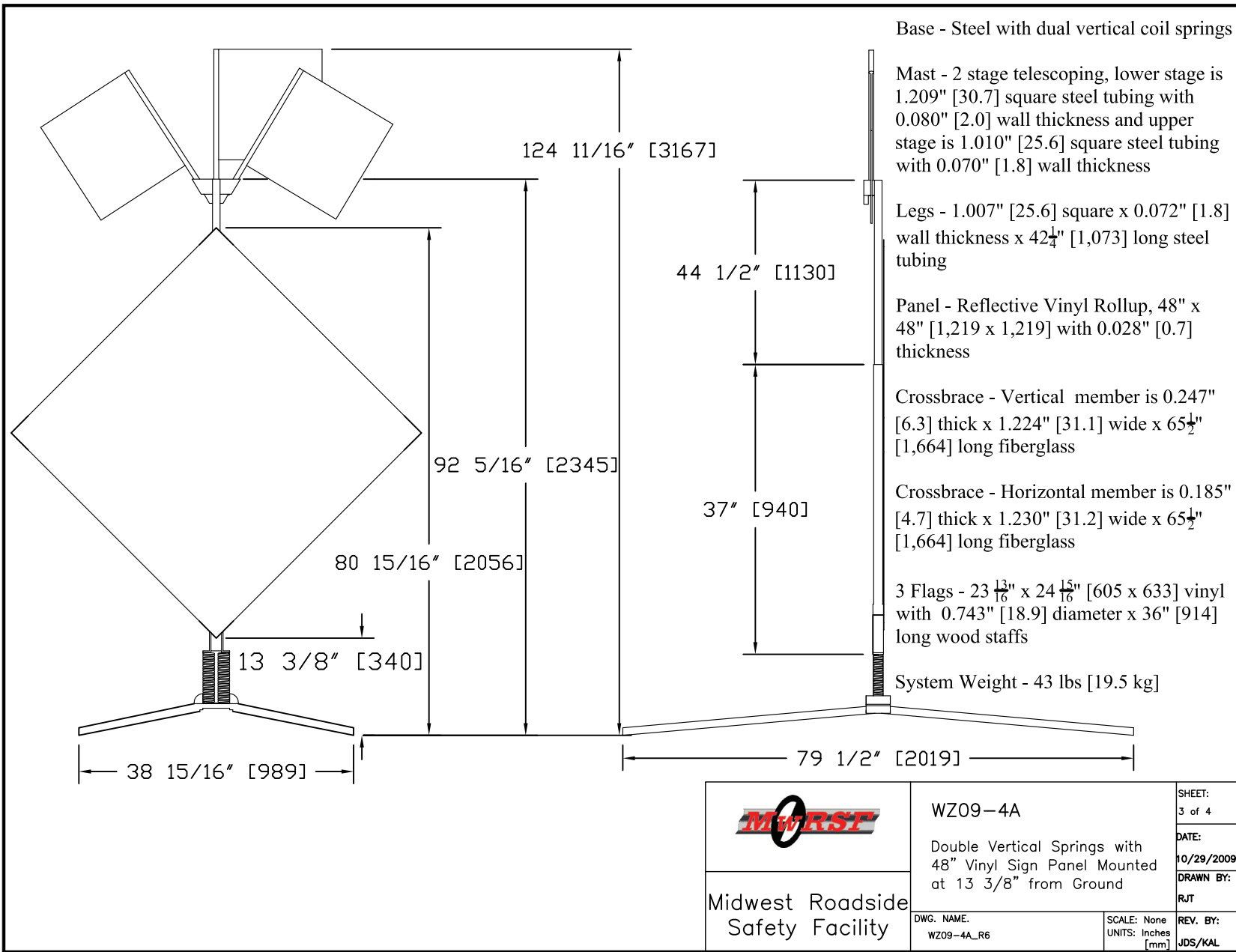
Dual Extension Springs with a 48" Vinyl Sign Panel Mounted at 21" from Ground


Midwest Roadside Safety Facility

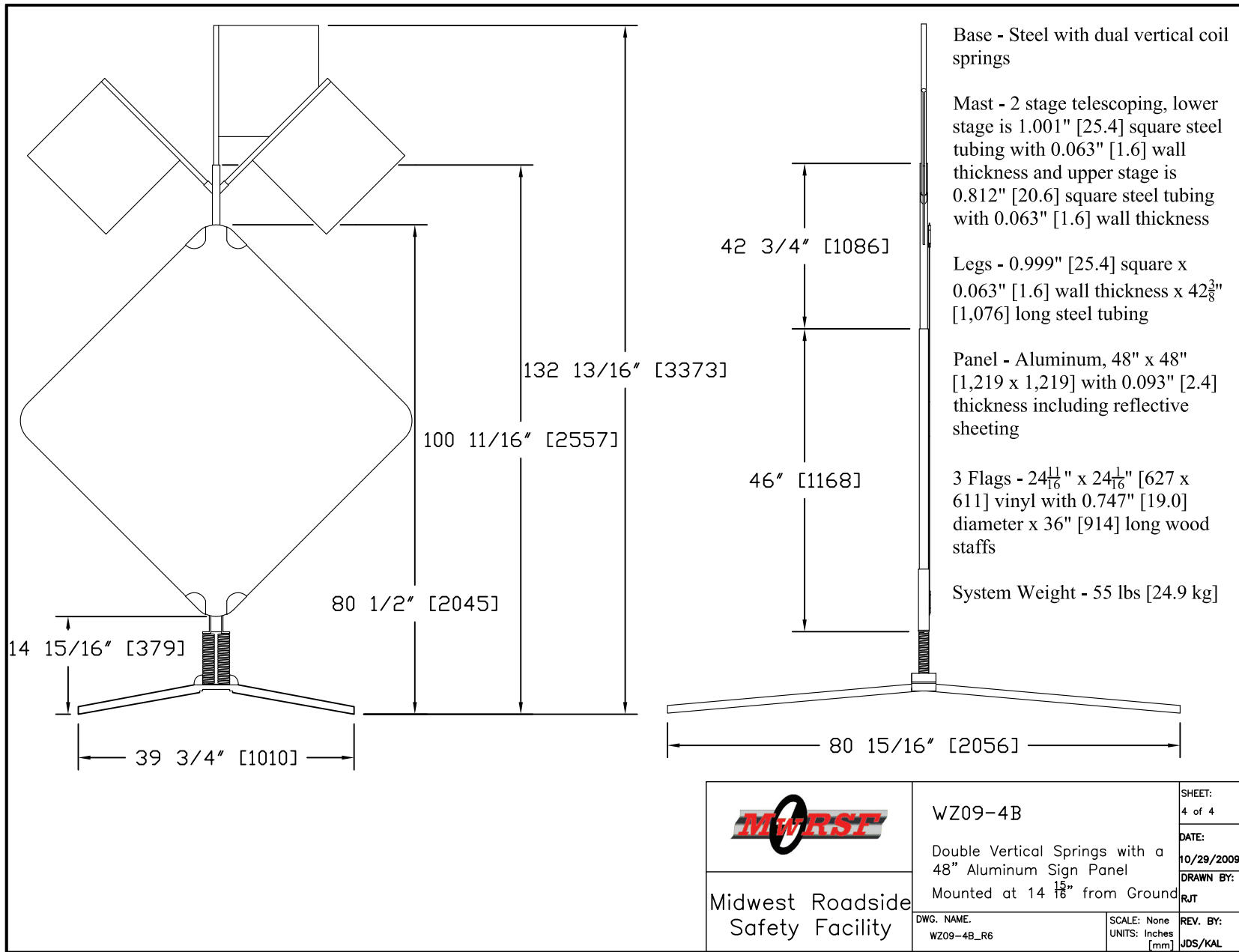
DWG. NAME:
WZ09-3B_R6

SCALE: None
UNITS: Inches
[mm]

SHEET:
2 of 4
DATE:
10/29/2009
DRAWN BY:
RJT
REV. BY:
JDS/KAL



	WZ09-4A	SHEET: 3 of 4
	Double Vertical Springs with 48" Vinyl Sign Panel Mounted at 13 3/8" from Ground	DATE: 10/29/2009
Midwest Roadside Safety Facility	DRAWN BY: RJT	REV. BY: JDS/KAL
DWG. NAME: WZ09-4A_R6	SCALE: None UNITS: Inches [mm]	



Midwest Roadside Safety Facility

WZ09-4B

Double Vertical Springs with a 48" Aluminum Sign Panel Mounted at 14 ¹⁵/₁₆" from Ground

DWG. NAME.
WZ09-4B_R6

SCALE: None
UNITS: Inches [mm]

SHEET:
4 of 4
DATE:
10/29/2009
DRAWN BY:
RJT
REV. BY:
JDS/KAL