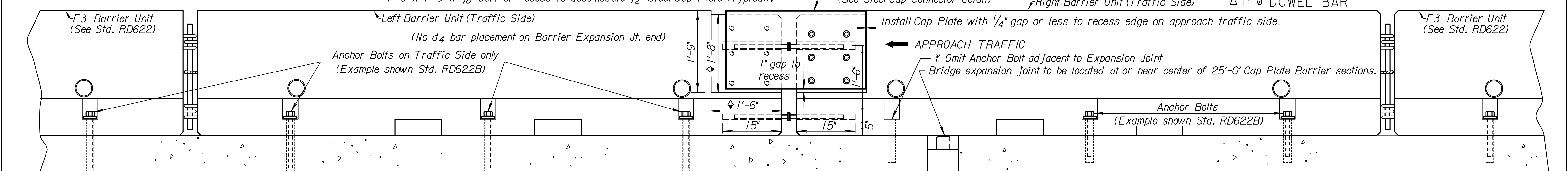
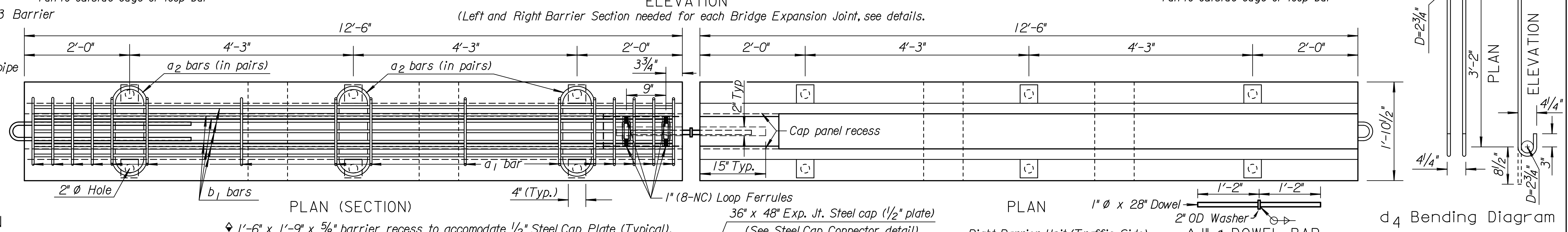
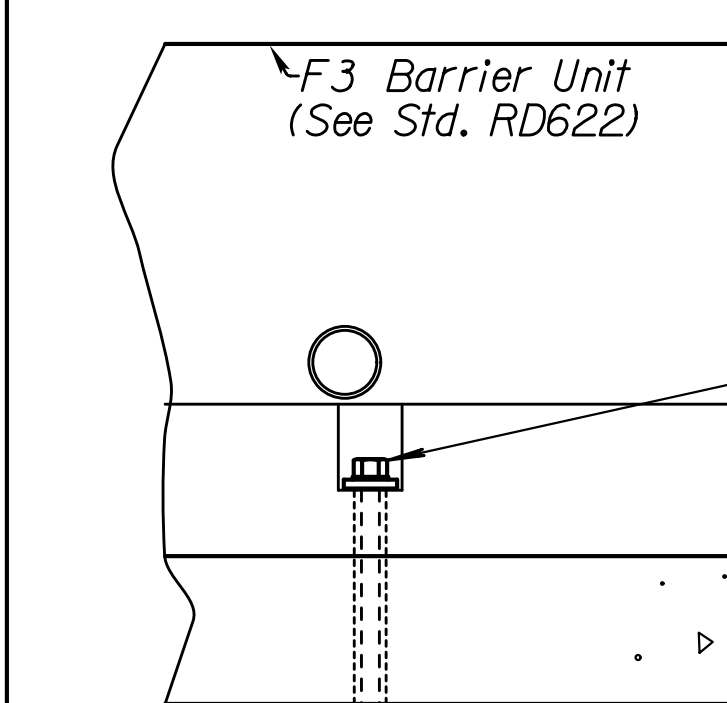
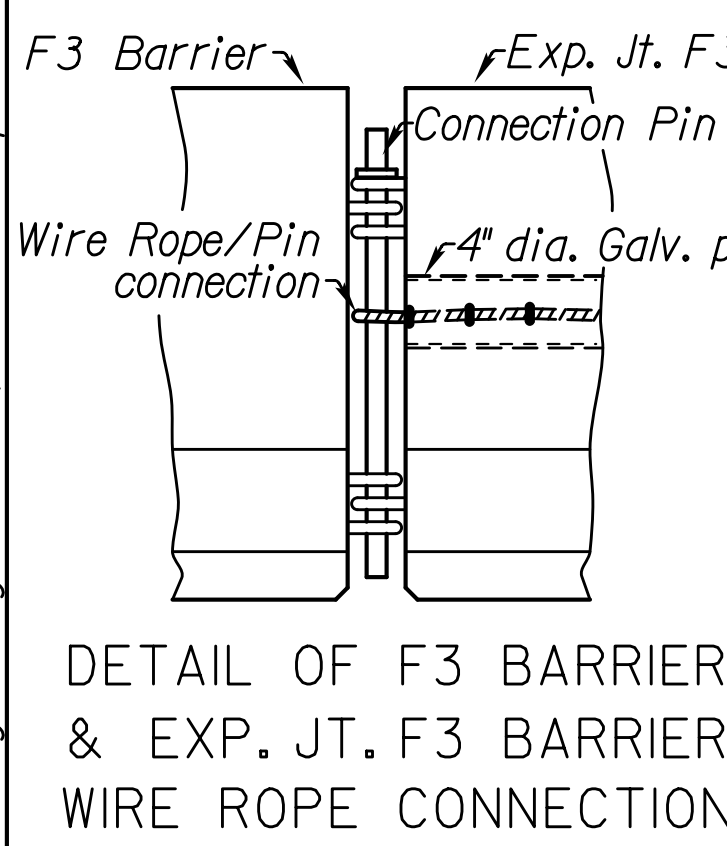
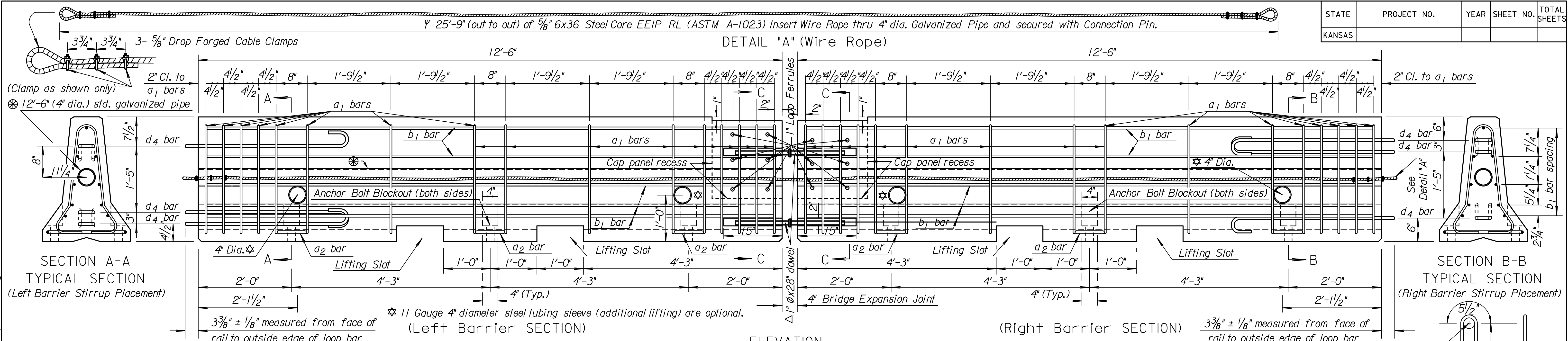
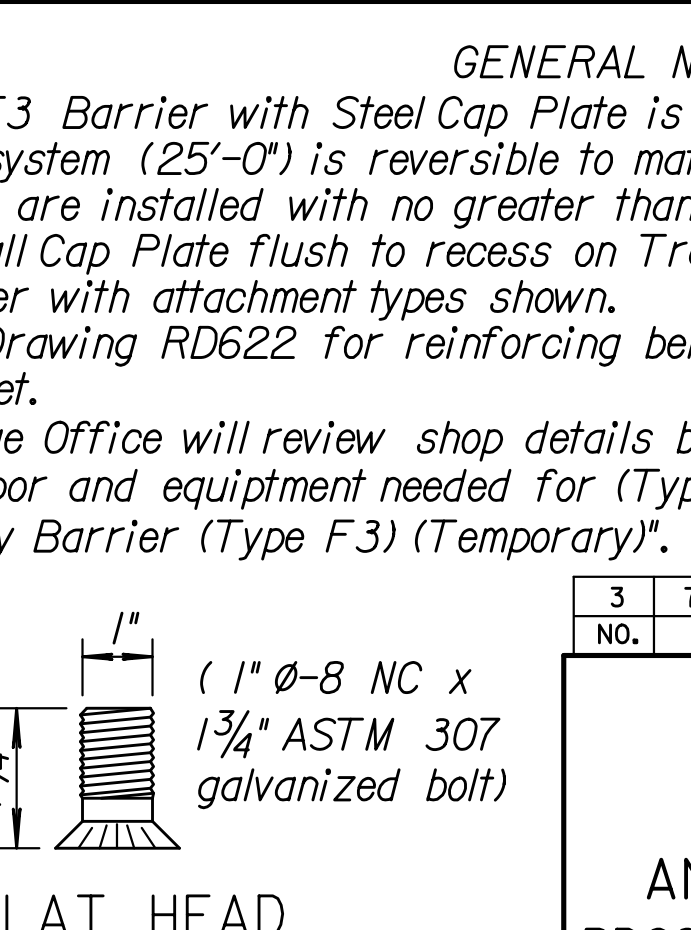
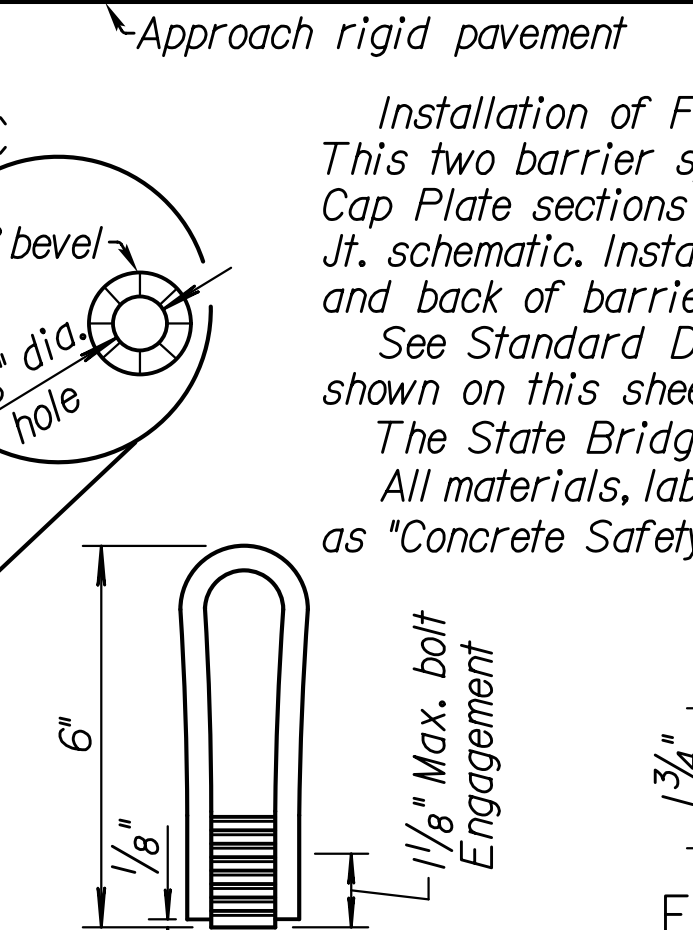
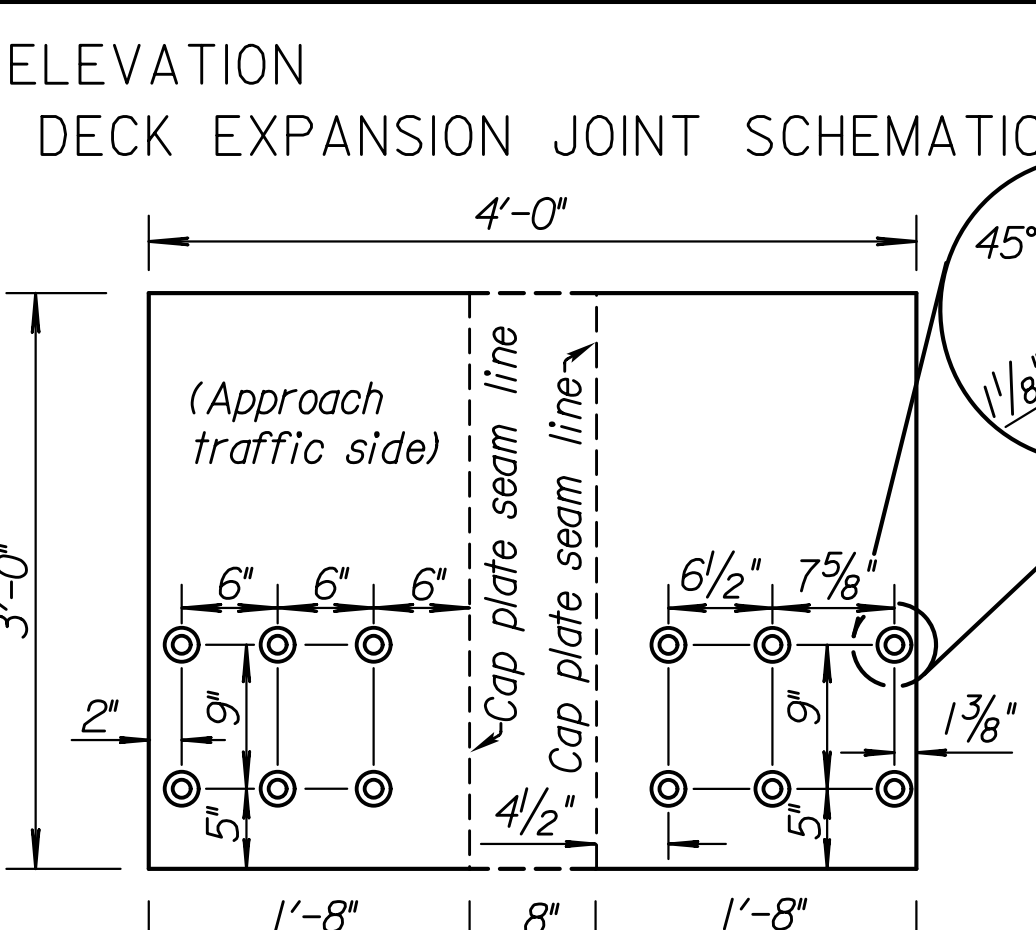
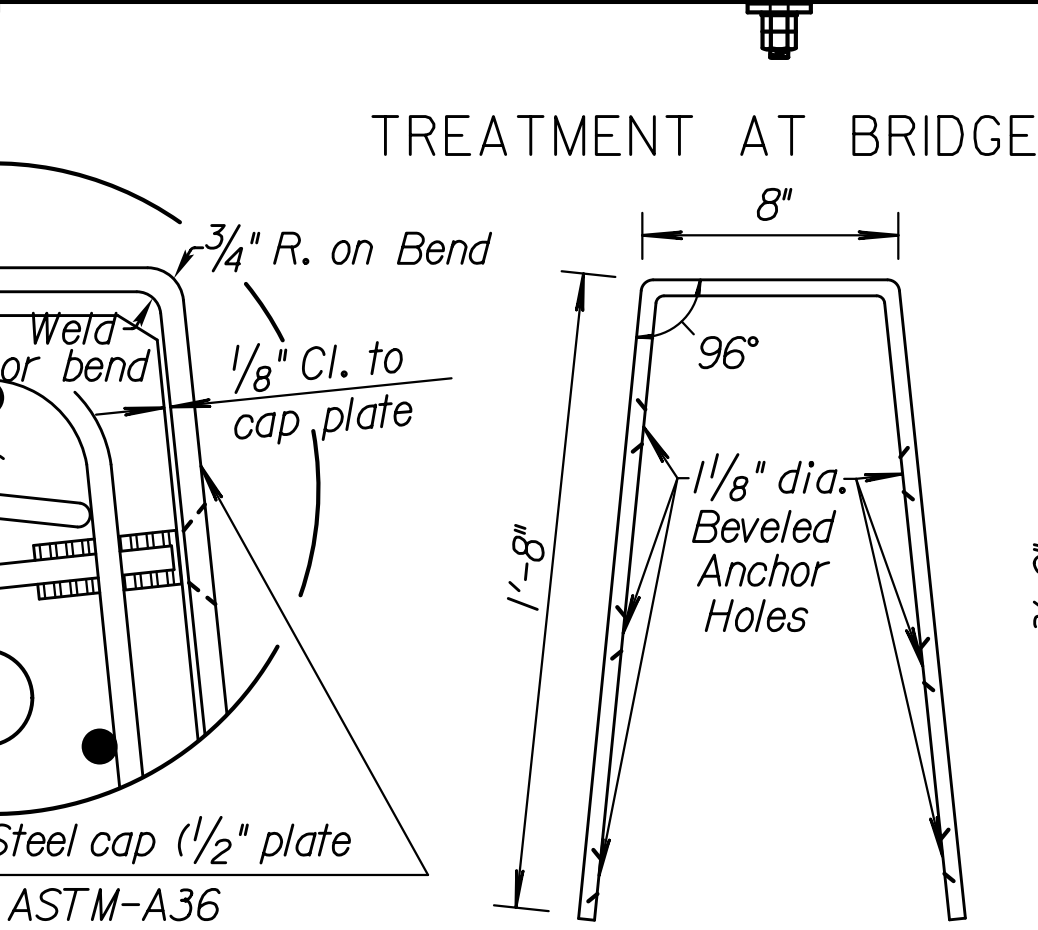
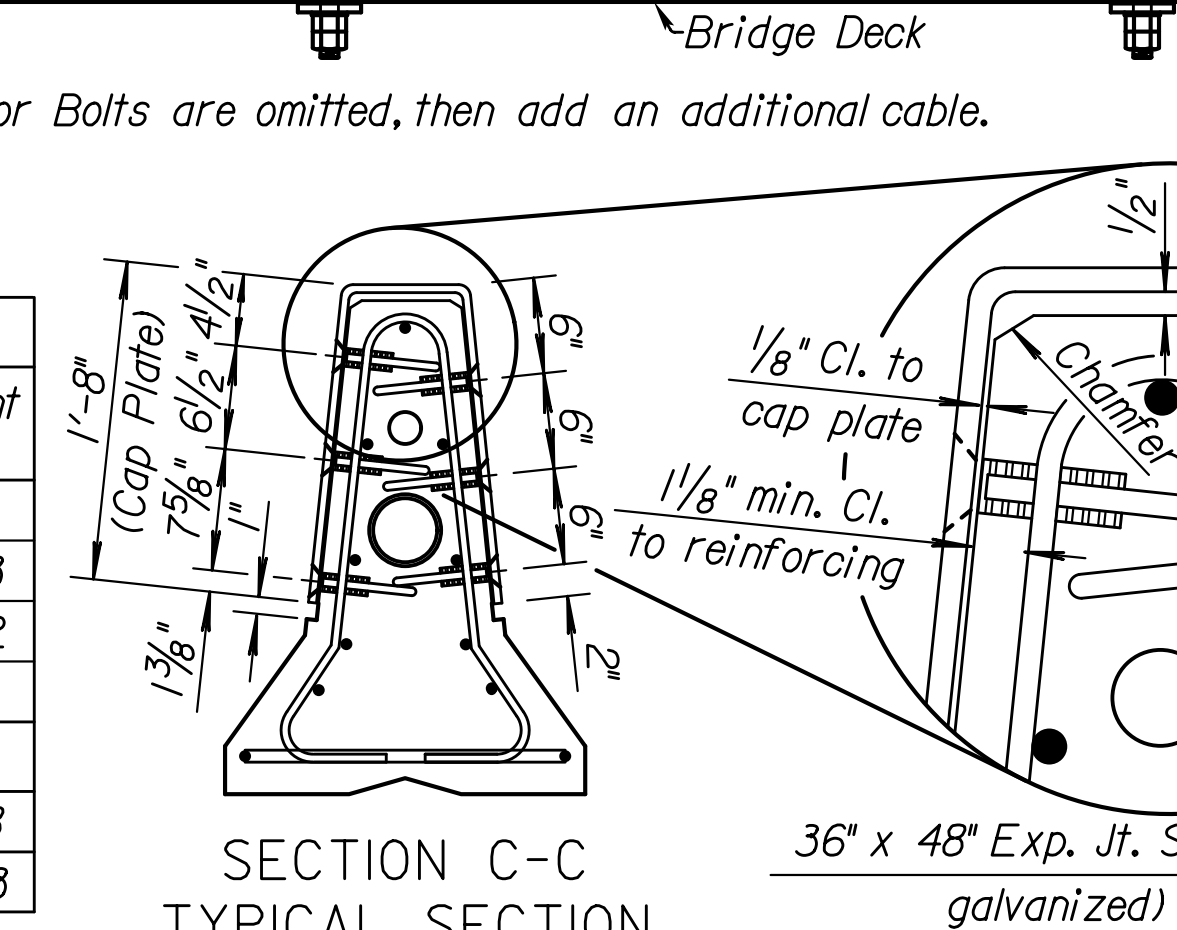


Note to Designer: This F3 Barrier Anchorage at Expansion Joint is only for use on bridges with thermal expansion of 1/2" or greater at the recommendation and review of Bridge Designer. Bridges longer than 1,000 feet require a Special Design.



Per 12'-6" Barrier Section

Bar	Bar Size	Shape	No. of Bars	Length Ft.	Weight Lbs.
a ₁	#4	U	16	6'-0"	64.1
a ₂	#6	C	6	2'-11"	26.3
b ₁	#5	—	9	12'-2"	114.2
LOOP ASSEMBLY					
d ₄	#6	—	3	8'-2"	36.8
				1/2" Structural Steel Cap Plate	201.3



Concrete Quantity = 1.3 C.Y.
 (Dimensions are out to out of bars unless otherwise noted.)
 Reinf., Struct. and Concrete quantities are for "Information Only".

GENERAL NOTES
 Installation of F3 Barrier with Steel Cap Plate is for thermal expansion joint with ≥ 1/2". This two barrier system (25'-0") is reversible to match with regular F3 Barrier layout. The Cap Plate sections are installed with no greater than 4" gap and pinned as shown in Expansion Jt. schematic. Install Cap Plate flush to recess on Traffic Approach side and bolt in place front and back of barrier with attachment types shown.
 See Standard Drawing RD622 for reinforcing bending diagrams and additional details not shown on this sheet.
 The State Bridge Office will review shop details before fabrication begins.
 All materials, labor and equipment needed for (Type F3) (25' Expansion Joint Unit) shall be bid as "Concrete Safety Barrier (Type F3) (Temporary)".

NO.	DATE	CHG.	BY	APP'D
3	7-26-07	Chg. flat head screw & ferrule to 1" S.W.K.	J.O.B.	J.O.B.
KANSAS DEPARTMENT OF TRANSPORTATION				
TEMPORARY CONCRETE SAFETY BARRIER TYPE F3 ANCHORAGE at EXPANSION JT. RD622C				
DESIGNED	J.P.J.	10-05-07	APP'D	James O. Brewer
DETAIL	CK.	DETAIL CK.	QUANTITIES	TRACED
DESIGN	CK.	DETAIL	QUAN.	CK. S.W.K.

Plotted: 11-APR-2011 14:58
 Drawn By: bet
 File: rd622c.dgn (rd622c)

KDOT Graphics Certified