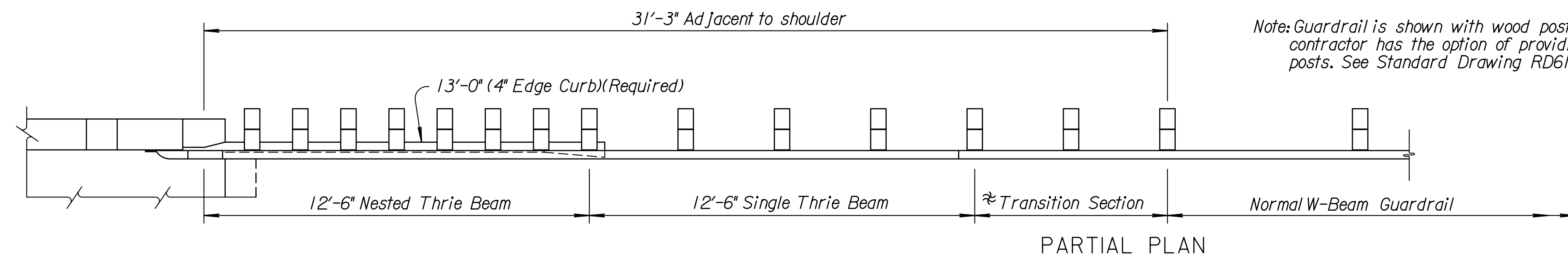
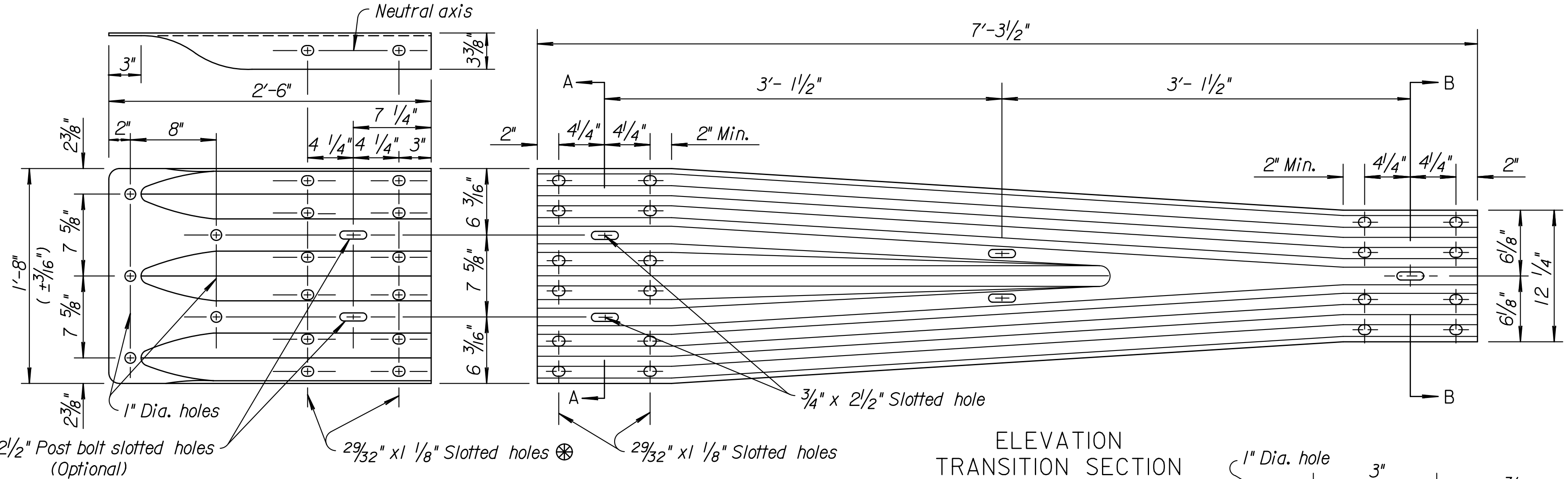
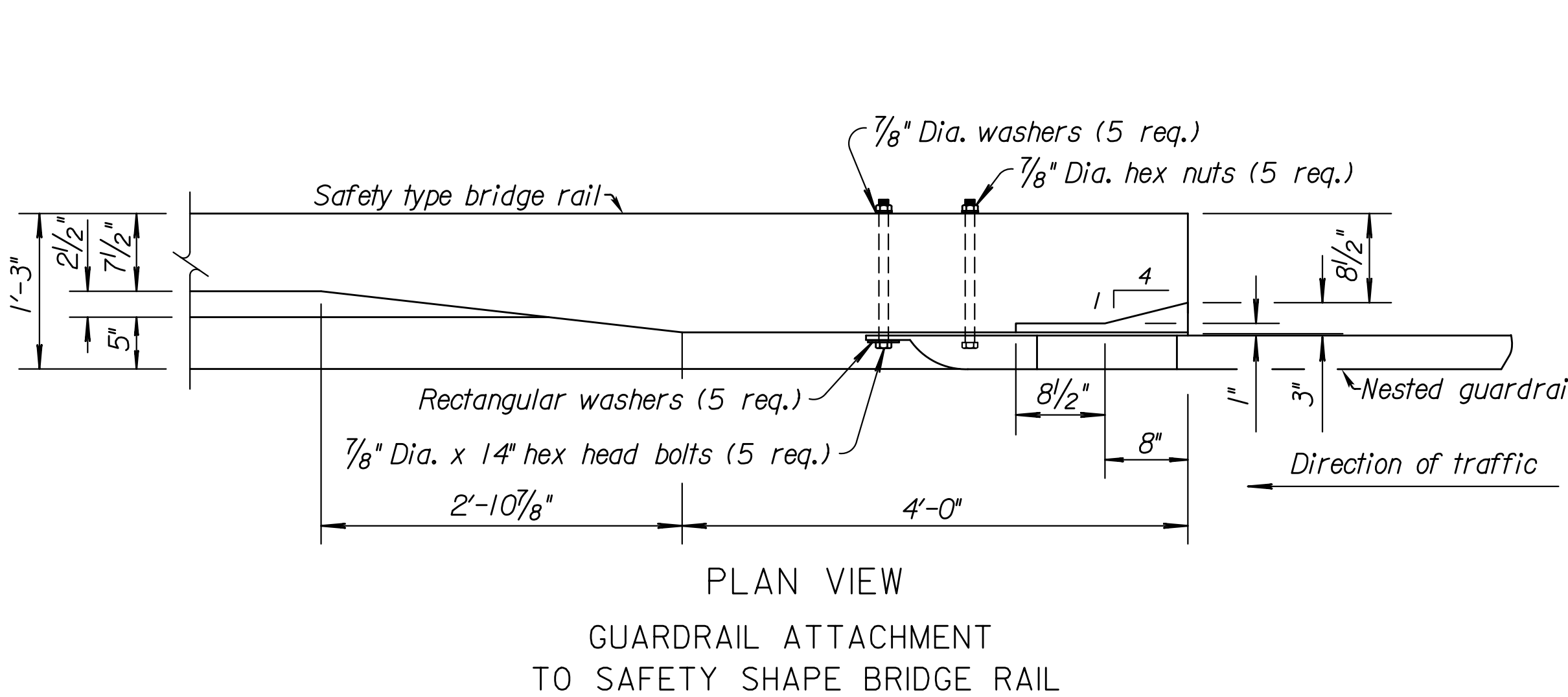
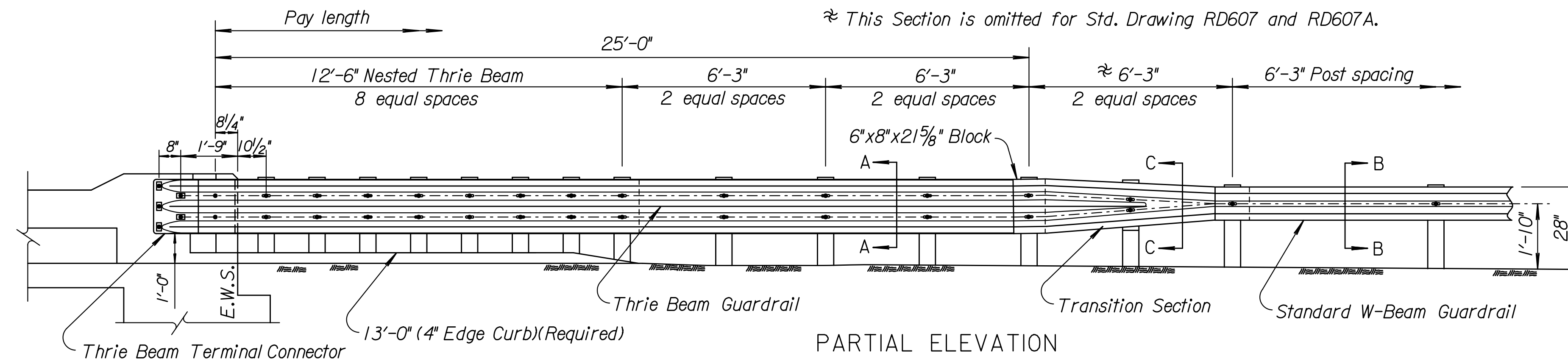


STATE	PROJECT NO.	YEAR	SHEET NO.	TOTAL SHEETS
KANSAS				

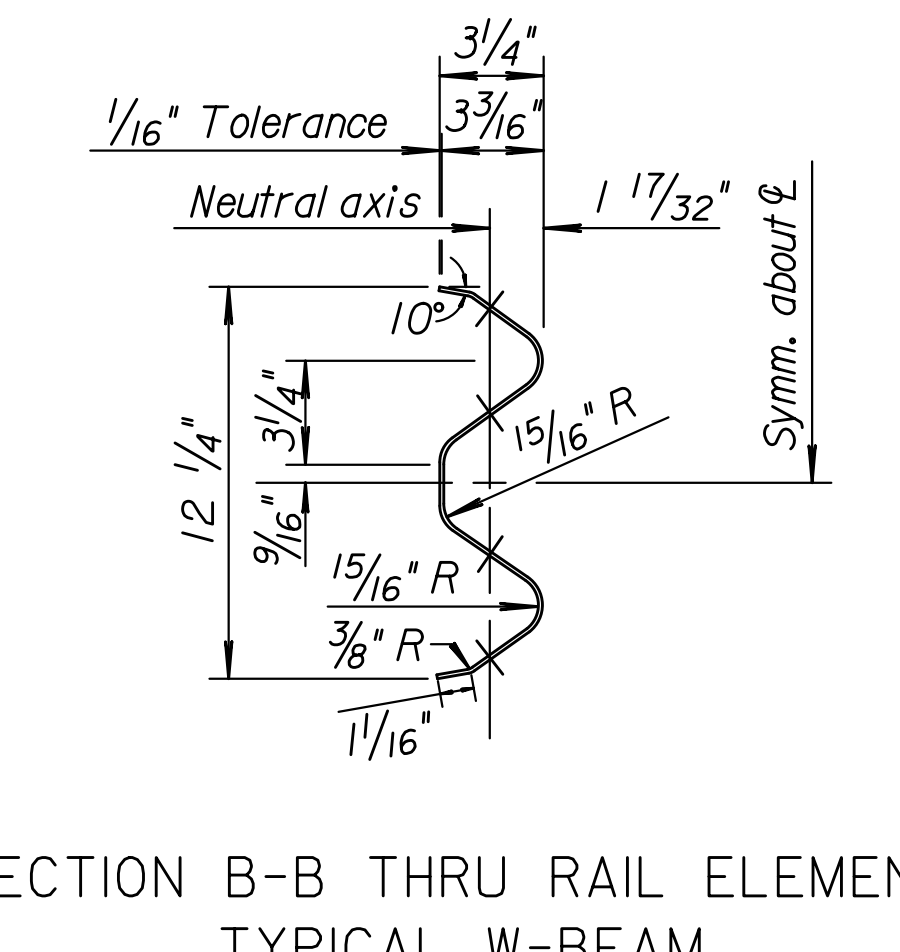
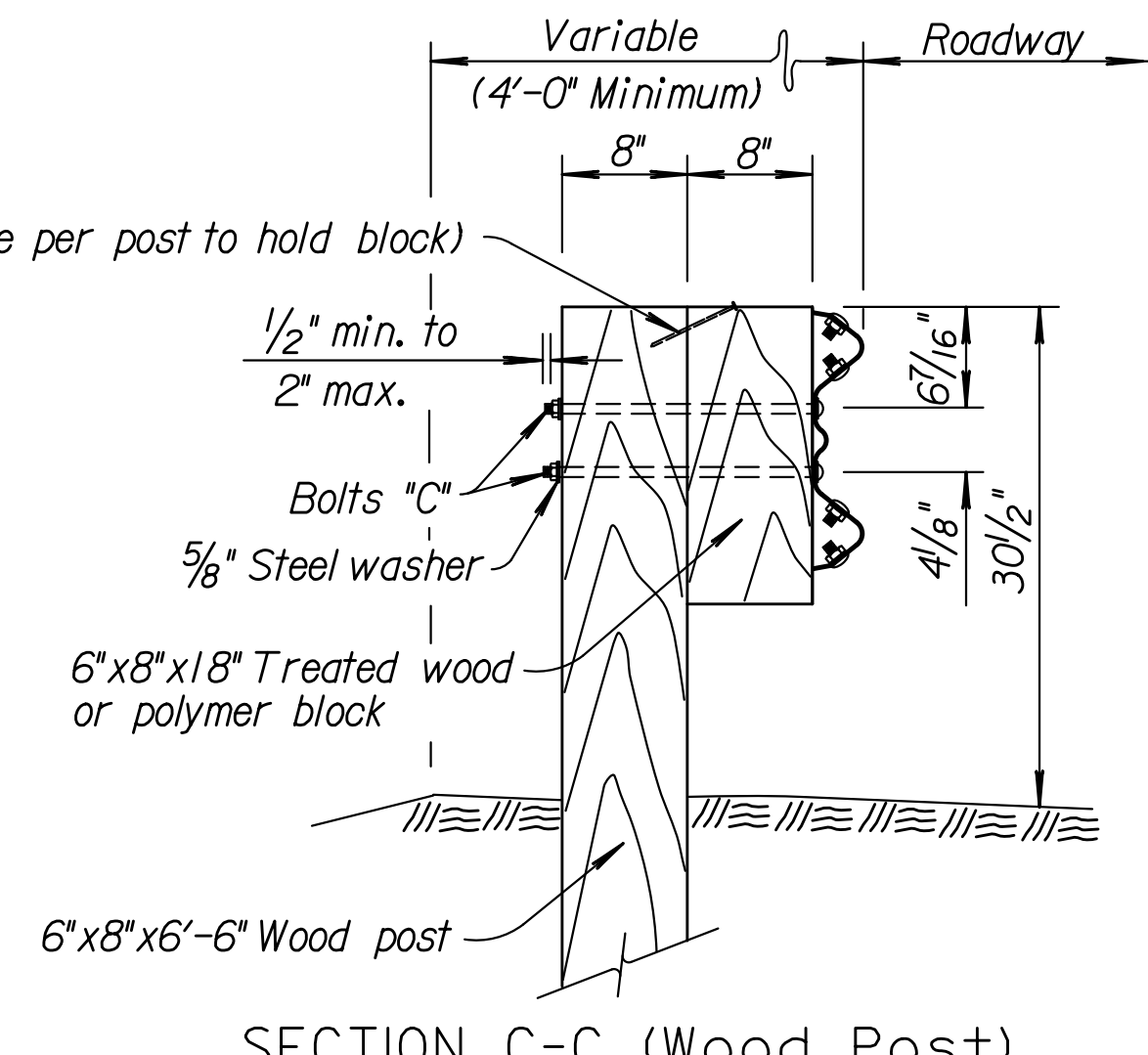
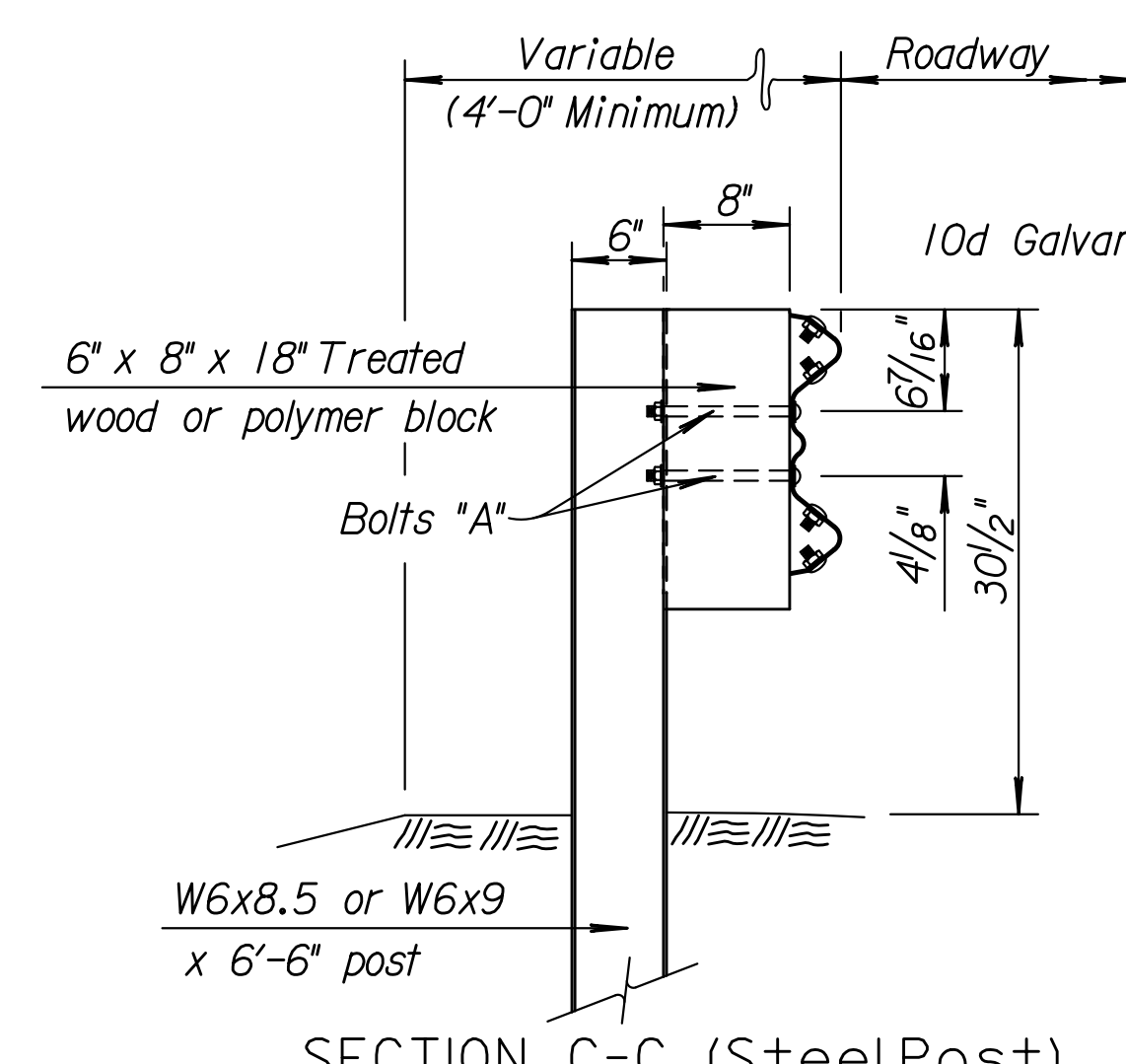
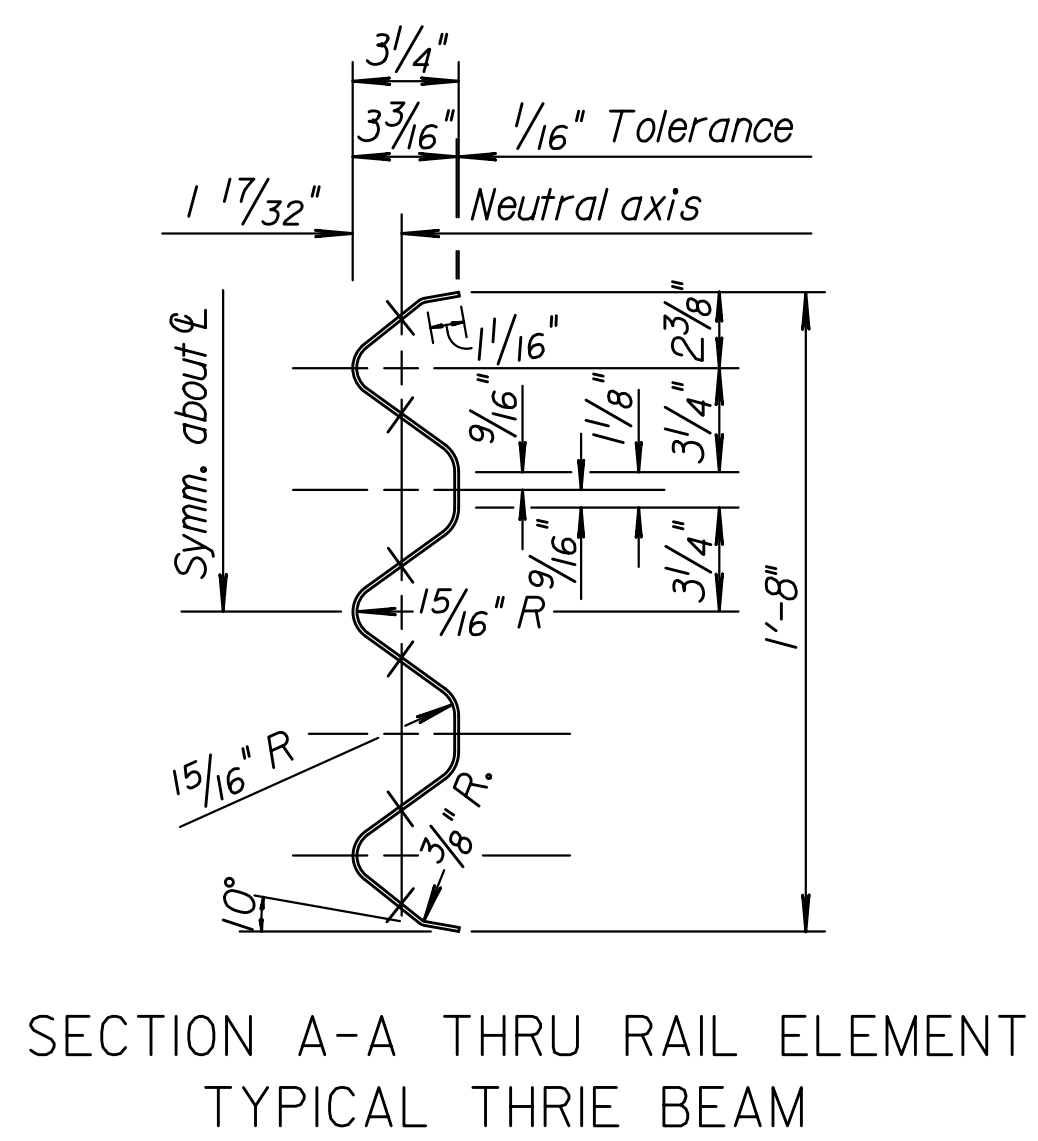
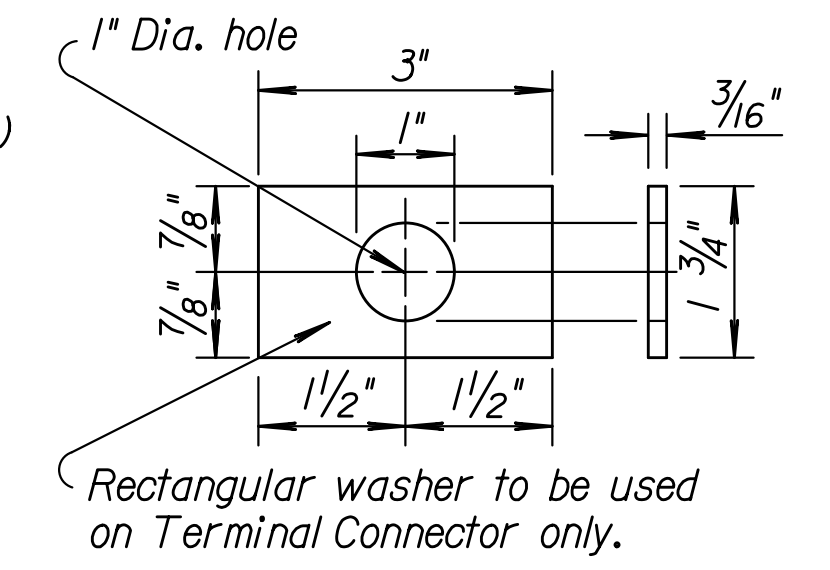


Note: Guardrail is shown with wood posts. However the contractor has the option of providing wood or steel posts. See Standard Drawing RD611 for details.

GENERAL NOTE
 Use galvanized 12 gauge steel rail elements unless otherwise noted. Use galvanized anchor bolts and post rail fittings, see Standard Specifications. Supply guard rail parts that are interchangeable with similar parts regardless of source or manufacturer. Fabricate Terminal Connector from 10 gauge steel, see standard specification. The connector has the same section as thrie beam guardrail Terminal connector is subsidiary to the bid item "Steel Plate Guardrail". Shop curve rails when radius is less than 150'. Lap guardrail splices, including terminal connector, in the direction of traffic. Where traffic is temporarily carried in the opposite direction of final configuration, lap rail splices in the direction of permanent traffic. Bridge to guardrail transition consists of 1- 25'-0" Thrie beam with 1- 12'-6" Thrie beam section nested in back of 25'-0" section (see layout), & 1- Thrie beam to W-beam Asymmetrical transition section. Use associated hardware with post spacing shown. Use w-beam guardrail with 6'-3" post spacing with rail furnished in 12'-6" or 25'-0" sections. All material and work required for this installation are paid under the bid item "Steel Plate Guardrail".



⊗ Optional 2 9/32" x 1 3/4" Slotted holes Rotated 50° (Typical) (12 req'd.)



Plotted : 03-FEB-2011 07:48
 Drawn By : bert
 File : rd613.dgn (rd613)

KANSAS DEPARTMENT OF TRANSPORTATION				
DETAILS OF THRIE BEAM GUARDRAIL TRANSITION				
RD613				
NO.	DATE	REVISIONS	BY	APP'D
I3	12-06-10	Rev. Sec. C-C, notes & 28" rail height	S.W.K.	J.O.B.
I2	07-02-09	Rev. Safety Shape Br. Rail detail	S.W.K.	J.O.B.
II	01-05-04	Added 4" Edge Curb, revised note	S.W.K.	J.O.B.
DESIGNED	DETAIL CK.	QUANTITIES	TRACED	Bowser
DESIGN CK.	DETAIL CK.	QUAN. CK.	TRACE CK.	King

KDOT Graphics Certified 01-31-2011