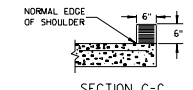
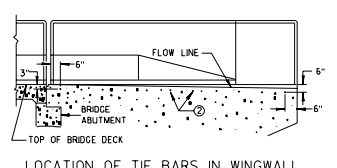
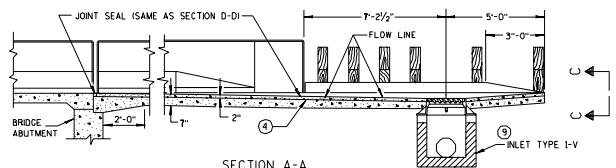
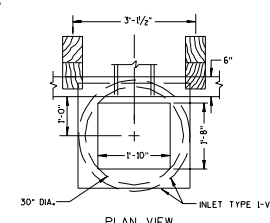
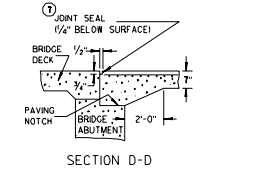
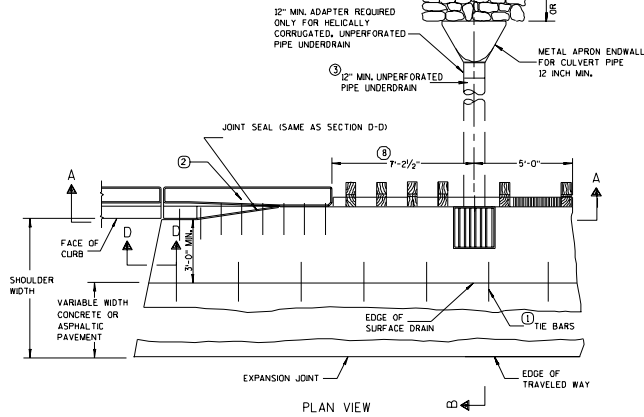
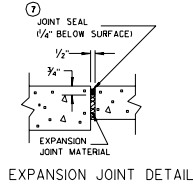
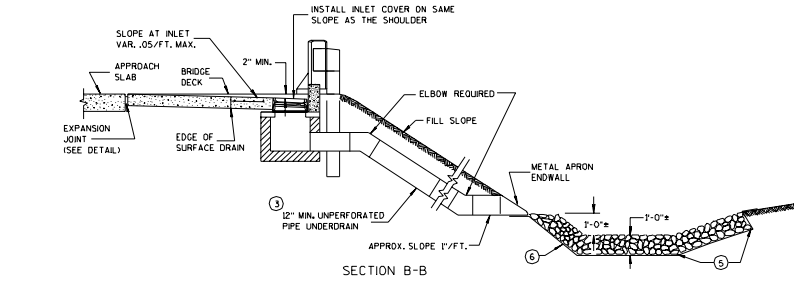


APPROVED _____
DATE _____ STATE MAINT. ENGINEER FOR HWYS

APPROVED _____
DATE _____ STATE MAINT. ENGINEER FOR HWYS

APPROVED _____
DATE _____ STATE CONST. ENGINEER FOR HWYS

S.D.D. 8 D 3-4



- GENERAL NOTES
- DETAILS OF CONSTRUCTION, MATERIALS, AND WORKMANSHIP NOT SHOWN ON THIS DRAWING SHALL CONFORM TO THE PERTINENT REQUIREMENTS OF THE STANDARD SPECIFICATIONS AND APPLICABLE SPECIAL PROVISIONS.
- NO. 4 X 2'-0" TIE BARS SPACED AT 3'-0" CENTERS TO BE USED ONLY WHEN ADJACENT TO P.C. CONCRETE.
 - NO. 4 X 2'-0" TIE BARS SPACED AT 2' CENTERS TO BE PLACED BY BRIDGE CONTRACTOR, OR PAVEMENT TIES PLACED AS DIRECTED BY THE ENGINEER.
 - THE PIPE UNDERDRAIN MAY BE ANY ONE OF THE SIX MATERIALS LISTED IN THE STANDARD SPECIFICATIONS SECTION 612.2 (EXCEPT SECTION 612.2.3 DRAIN TILE).
 - MINIMUM REINFORCEMENT SHALL BE 6" X 6" - W4.0 X W4.0 OR NO. 3 BARS LONGITUDINAL AND TRANSVERSE SPACING 12" C-C.
 - LIMITS OF ADDITIONAL RIPRAP WHEN SPECIAL DITCH IS REQUIRED.
 - GEOTEXTILE FABRIC, TYPE "R".
 - HOT POURED SEALANT UNLESS OTHERWISE SPECIFIED.
 - THIS DIMENSION MAY VARY DEPENDING ON THE SPACING OF POSTS FOR THE STEEL PLATE BEAM GUARD. THE TYPICAL LOCATION FOR THE SURFACE DRAIN IS WHERE THE POST SPACING WIDENS TO 3'-1/2".
 - SEE CURRENT STANDARD DETAIL DRAWINGS 8AS AND 8C1 FOR DETAILS.

DESIGN NOTE: (WILL NOT APPEAR ON CONTRACT PLANS)
WHEN TIE BARS (2) ARE NOT SHOWN IN THE BRIDGE DRAWINGS, INCLUDE IN THE PLAN AS "PAVEMENT TIES".

CONCRETE SURFACE DRAIN
DROP INLET TYPE
AT STRUCTURES

STATE OF WISCONSIN
DEPARTMENT OF TRANSPORTATION

APPROVED _____
DATE _____ STATE DESIGN ENGINEER FOR HWYS
FHWA

Standard Detail Drawing 8D3 - 4

References:

Bid items associated with this drawing:

<u>Item #</u>	<u>Title</u>
---------------	--------------

Standardized Special Provisions associated with this drawing:

<u>STSP #</u>	<u>Title</u>
---------------	--------------

Other SDD's associated with this drawing:

Design Notes:

April 18, 2003