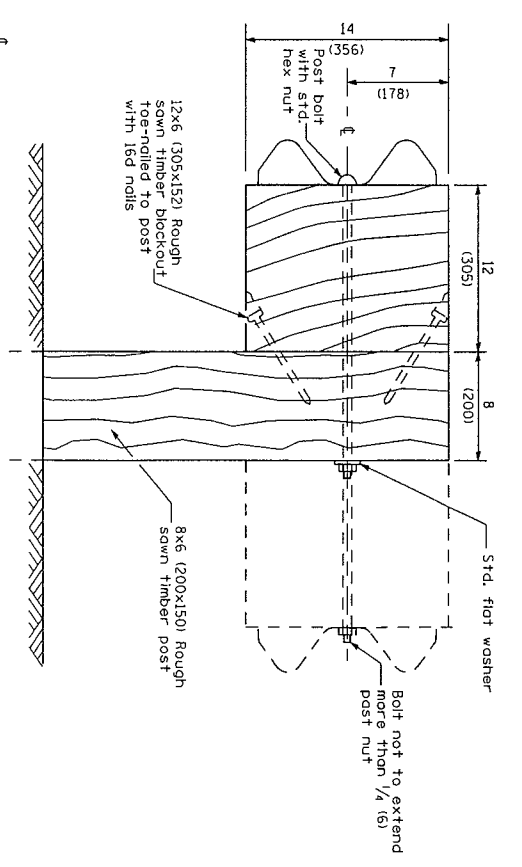
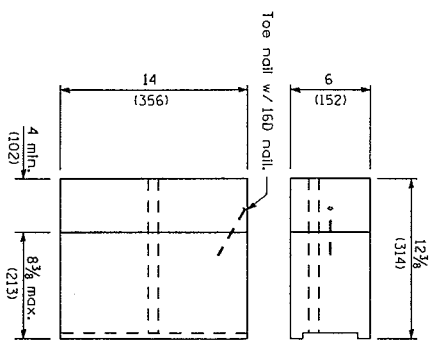


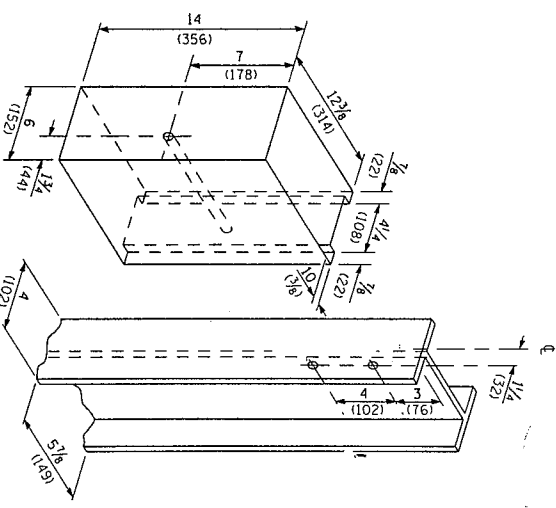
**STEEL POST CONSTRUCTION**



**WOOD POST CONSTRUCTION**

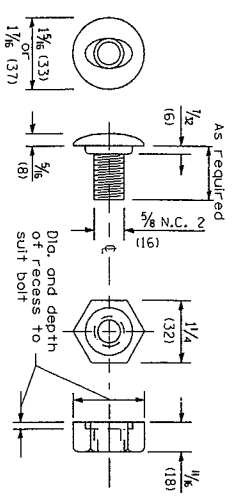


**TWO-PIECE WOOD BLOCK-OUT OPTION**



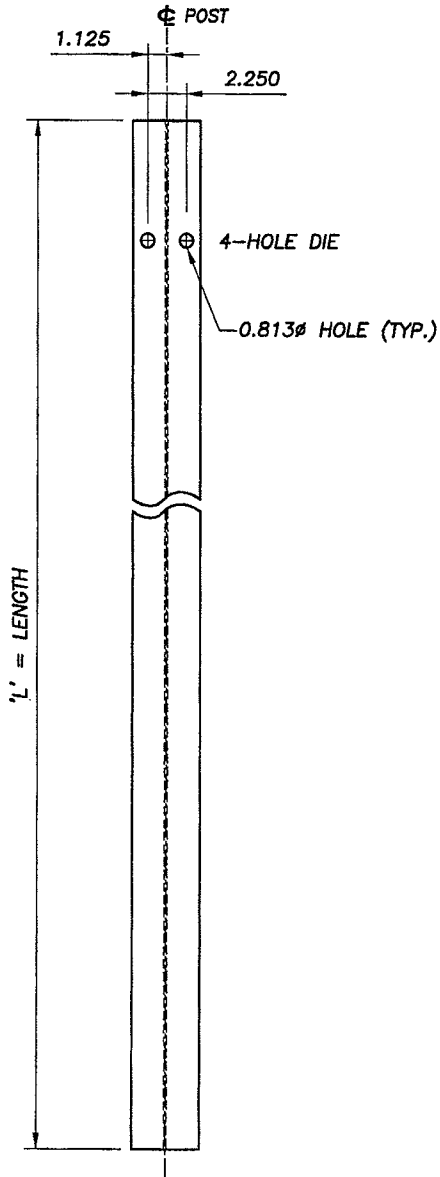
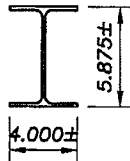
Note: All holes 3/4 (20) dia.

**WOOD BLOCK-OUT AND STEEL POST DETAILS**

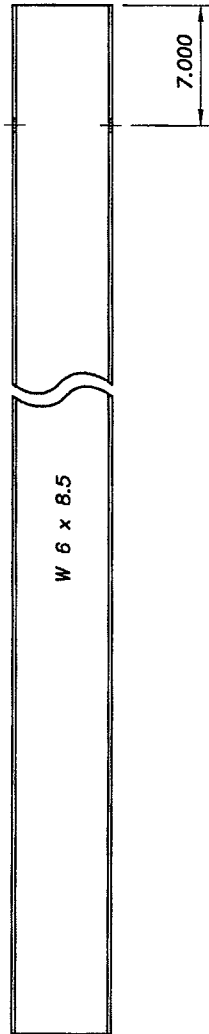


**POST OR SPLICE BOLT & NUT**

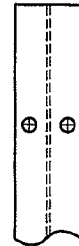
REVISIONS			
No.	DESCRIPTION	DATE	ECN
0	INITIAL RELEASE		



FRONT



SIDE



PARTIAL BACK VIEW

CT W BLK D/A 2 HOLE, 2 SIDE L (7) | NEW GUIDE RAIL POST | W6 x 8.5 x 'L'

 **HIGHWAY SAFETY CORP.**  
GLASTONBURY, CT

- UNLESS OTHERWISE NOTED -  
DIMENSIONAL UNITS ARE: INCHES  
- TOLERANCES - ± 1/16"

DRAWN	J. Ruiz	CHK	
SCALE	NONE	CHK	
SIZE	A	CHK	
DATE	2/21/02	REV.	0

DRAWING NO.  
**P0-36**