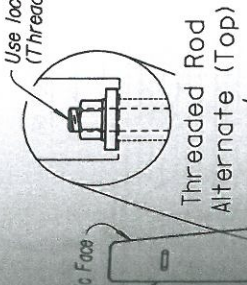


BRIDGE DECK APPLICATION

| | |
|---------------|--|
| $A < 2'$ | Anchor each barrier with 3 bolts on traffic face |
| $2' < A < 4'$ | Anchor with Tie-down strap connector |
| $A \geq 4'$ | No anchorage required unless shown on plans |

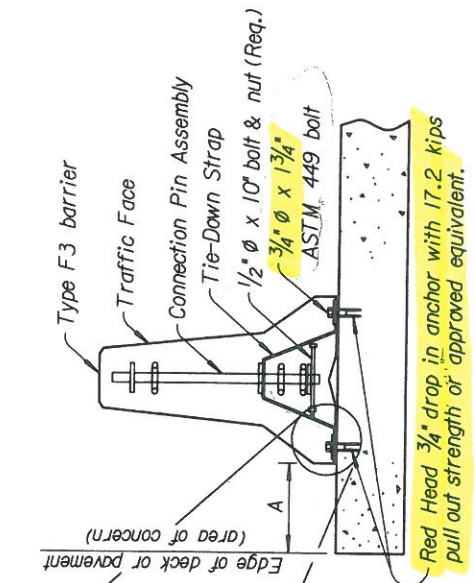
This dimension may be reduced to 1' on a newly constructed Bridge Deck.

Use lock washer, lock nut or burr threads (Threaded Rod Alternate)



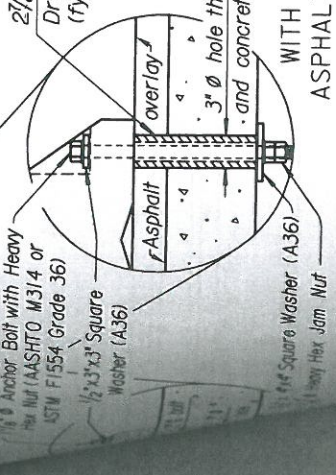
ROAD PAVEMENT APPLICATION

| | | |
|------------|------------------|--|
| Option 1 R | $0' \leq A < 2'$ | Anchor each barrier with 3-bolts on traffic face |
| Option 2 R | $6' \leq A < 2'$ | Anchor with Tie-down Strap or Staked Down (flexible) |
| Option 3 R | $A \geq 2'$ | No anchorage required |



AIT-DRILLED AND GROUTED ANCHOR / Bridge Deck (Opt. 1B) or Rigid Pavement (Opt. 1R)

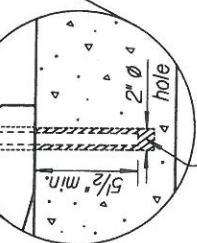
$27/8" \times 5/8" \times 15/8"$ Cold Drawn DOM steel tube (fy= 72 ksi, min.)



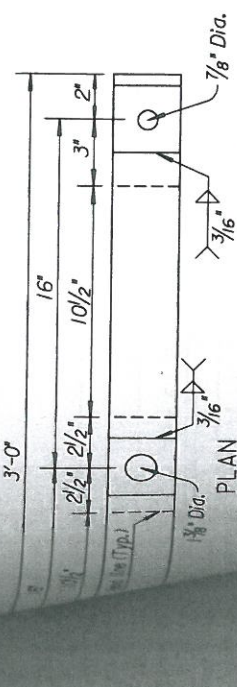
TIE-DOWN STRAP Rigid Pavement (Opt. 2 R) or Bridge Deck (Opt. 2 B)

$1/8" \phi$ Anchor Bolt (AASHTO M314 or ASTM F1554 Grade 36) with $5/2"$ or longer embedment per Manufacturer Recommendation (f'c= 4 ksi min. Conc.) to develop ultimate strength of anchor bolt.

Note: Anchor installation (Opt. 1 B) avoids damage to the support beams, girders or expansion joint. The State Bridge Office shall approve the use of (Opt. 1 B).



Manufacturer Recommended Grout or cement



TIE-DOWN STRAP DETAILS

Barrier Units

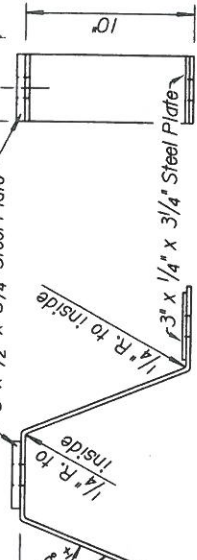
Traffic Side of Barrier

Manufacturer Recommended Grout or cement

$3" \times 1/4" \times 36"$ Steel Strap

$3" \times 1/4" \times 3/4"$ Steel Plate

$3/8"$



END VIEW

Option to use a thicker steel strap is not allowed.

Barrier Units

INSTALLATION may be used for expansion or exposure of the utilities within up to 2' ANCHORAGE washer install side exposure barrier anchor equal to moving qualify into pre for mix To f structio complete Work subside see inde TEMPORARY SIGNING: For drawing See. barriers

UTILITIES

ANCHORAGE

BARRIER

ANCHOR

equal to

moving

qualify

into pre

for mix

To f

structio

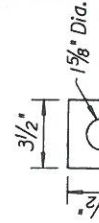
complete

Work

subside

see inde

TEMPORARY SIGNING: For drawing See. barriers



STOP PLATE DETAIL

Flexible P

