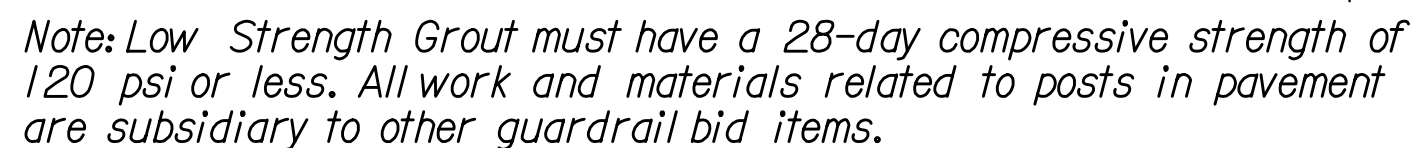
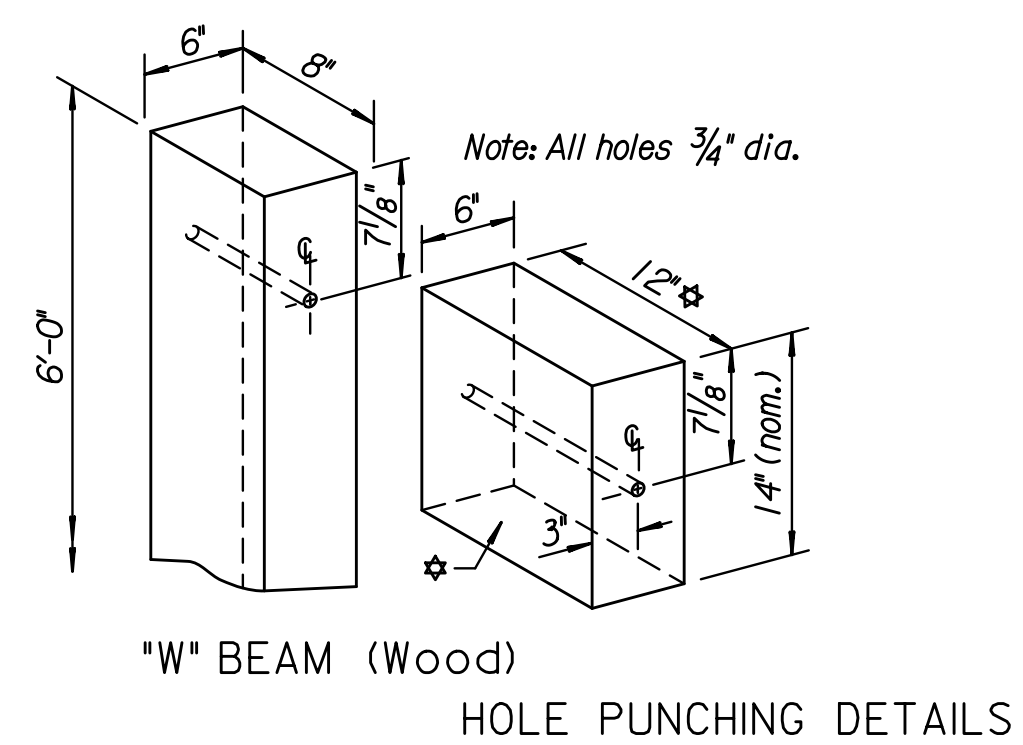
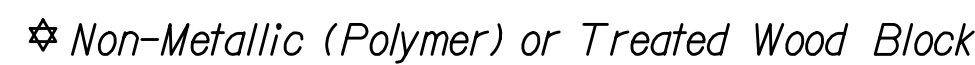


Drawn By : trhoads
File : rd611a.dgn



A Type II (laydown) curb & gutter is preferred when guardrail is adjacent to curb.

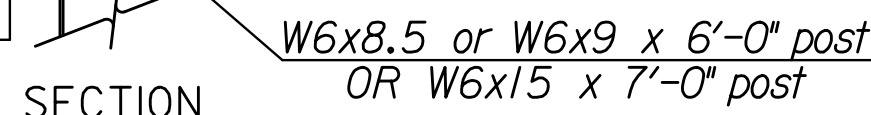


POSTS IN PAVEMENT

(Not to Scale)

GENERAL NOTES (Wood Posts)

*All dimensions are nominal and are subject to manufacturing tolerances.
Excavation including rock, shale, and other materials for erection of Guardrail
is subsidiary to various bid items for which payment is made.*



THRIE BEAM POST DETAILS/POSTS IN PAVEMENT



W-BEAM (MGS) POST DETAILS

⊗ See Standard Drawing RD613A for Thrie Beam Transition Section Blockout hole pattern.

☆ *Non-Metallic (Polymer) or Treated Wood Block*

STEEL POSTS

GENERAL NOTES (Steel Posts)

All dimensions are nominal and are subject to manufacturing tolerances. Excavation including rock, shale, and other materials for erection of Guardrail is subsidiary to various bid items for which payment is made.

<i>BOLT SIZE SCHEDULE</i>	
<i>Bolt</i>	<i>L</i>
<i>A</i>	<i>10"</i>
<i>B</i>	<i>1 1/4"</i>
<i>C</i>	<i>18"</i>
<i>D</i>	<i>14"</i>
<i>E</i>	<i>22"</i>

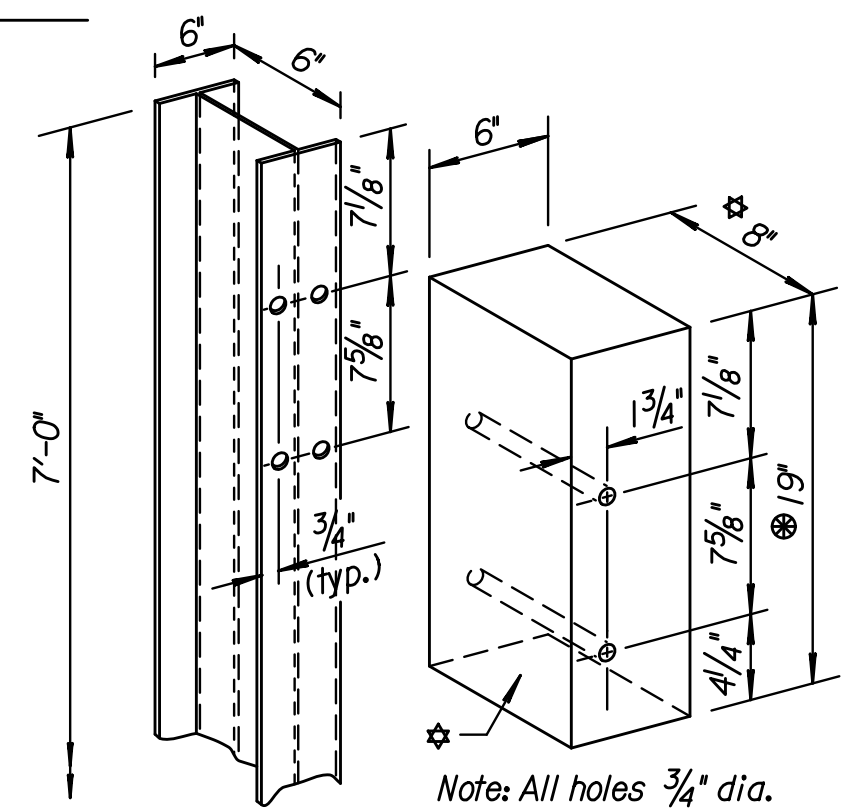


STATE	PROJECT NO.	YEAR	SHEET NO.	TOTAL SHEETS
KANSAS				

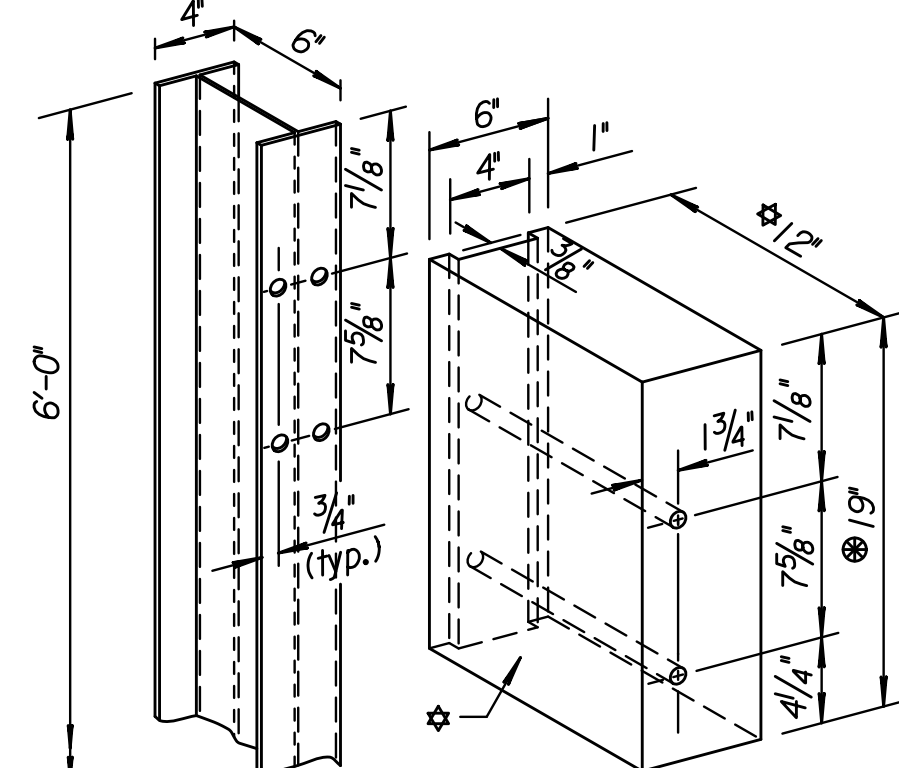
☒ Slurry Grout (Low Strength)
See KDOT's Standard Specifications

☒ Pavement (Concrete or Asphalt)

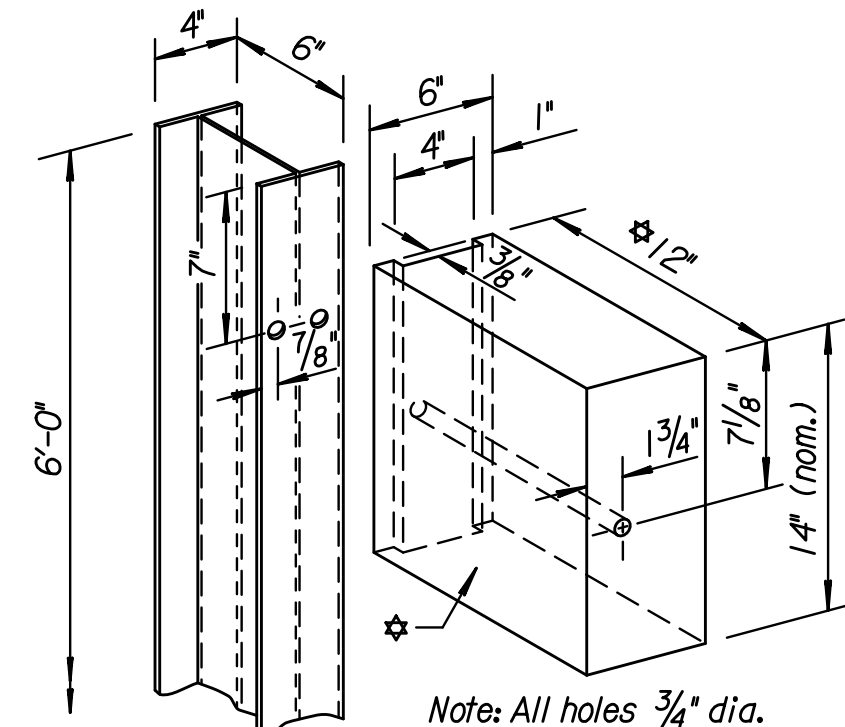
Note: Low Strength Grout must have a 28-day compressive strength of 120 psi or less. All work and materials related to posts in pavement are subsidiary to other guardrail bid items.



THREE BEAM (Steel)



THREE BEAM (Steel)



"W" BEAM (Steel)

4	11-8-12	Revised Detail, Posts In Pavement	S.W.K.	J.O.B.
3	8-1-12	Revised Note to Designer	S.W.K.	J.O.B.
2	5-24-12	Revised Detail, Posts In Pavement	S.W.K.	J.O.B.
1	12-22-11	Added Detail, Posts In Pavement	S.W.K.	J.O.B.
NO.	DATE	REVISIONS	BY	APP'D

GUARDRAIL POST (MGS) DETAILS

RD6IIA

FHWA APPROVAL		3-3-13	APP'D. James O. Brewer
DESIGNED	DETAILED	QUANTITIES	TRACED Bowser
DESIGN CK.	DETAIL CK.	QUAN.CK.	TRACE CK. King

KDOT Graphics Certified 01-07-2013

DOT Graphics Certified