

GENERAL NOTES


- See Standard 630001 for details of guardrail not shown.
- Thrie beam rail shall be bolted to block-out at all posts.
- All slope ratios are expressed as units of vertical displacement to units of horizontal displacement (V:H).
- All dimensions are in inches (millimeters) unless otherwise shown.

DATE	REVISIONS
1-1-13	Added notes to see plans for details of approach curbs.
1-1-12	Corrected curb length.

TRAFFIC BARRIER
TERMINAL, TYPE 6

(Sheet 1 of 3)

STANDARD 631031-11



Illinois Department of Transportation

PASSED January 1, 2013

Michael Brand

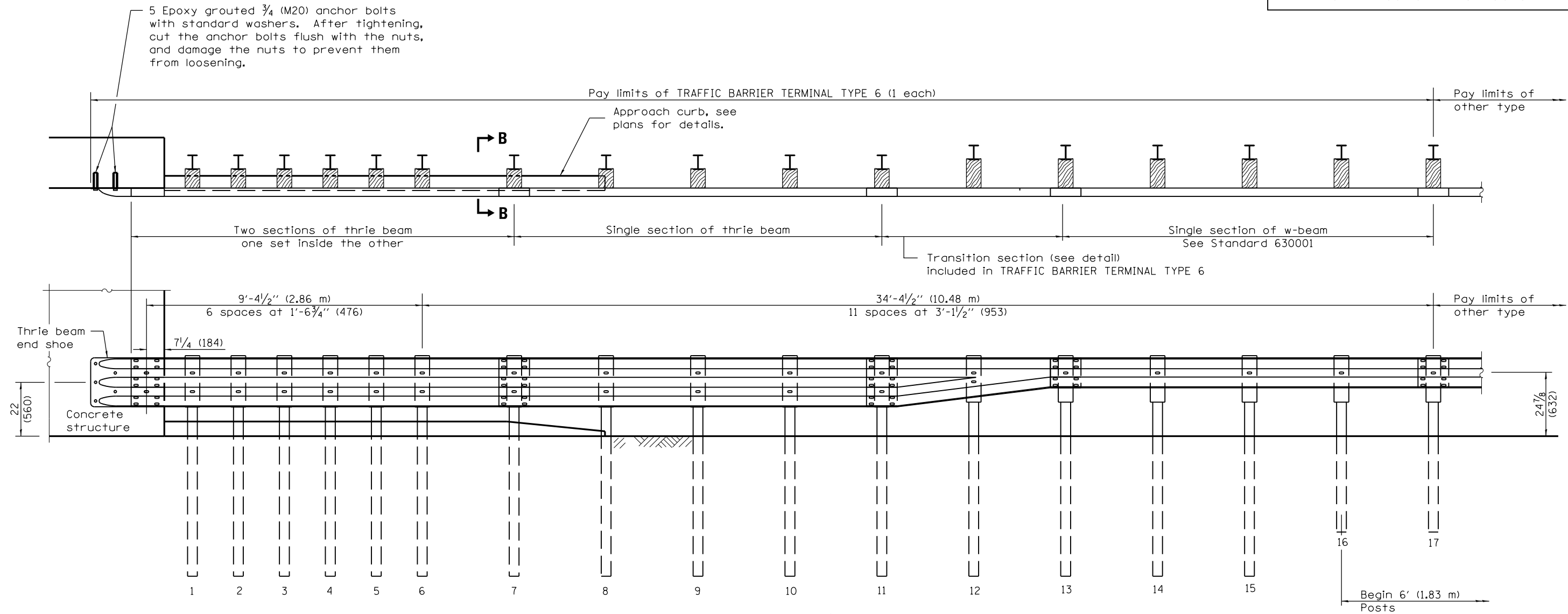
ENGINEER OF POLICY AND PROCEDURES

APPROVED January 1, 2013

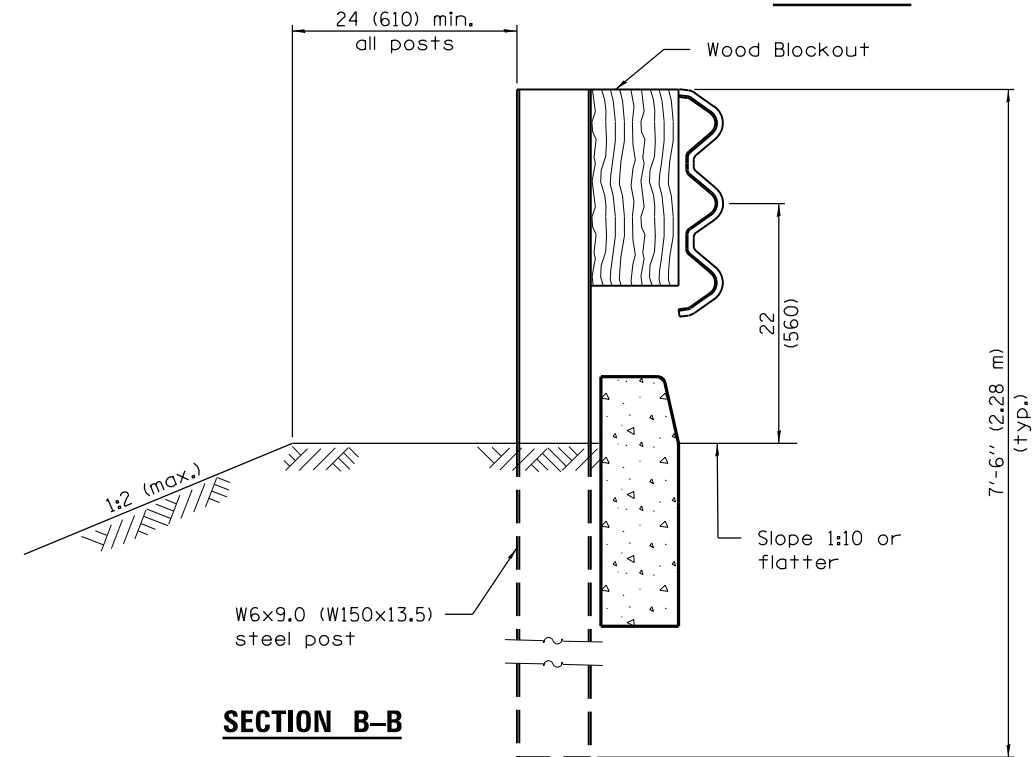
[Signature]

ENGINEER OF DESIGN AND ENVIRONMENT

ISSUED 1-1-97



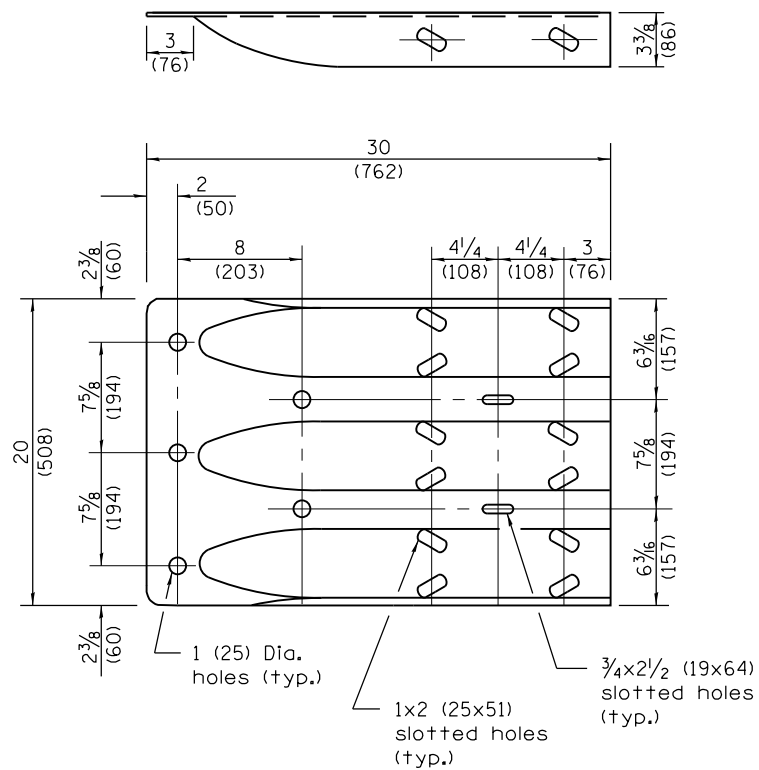
ELEVATION



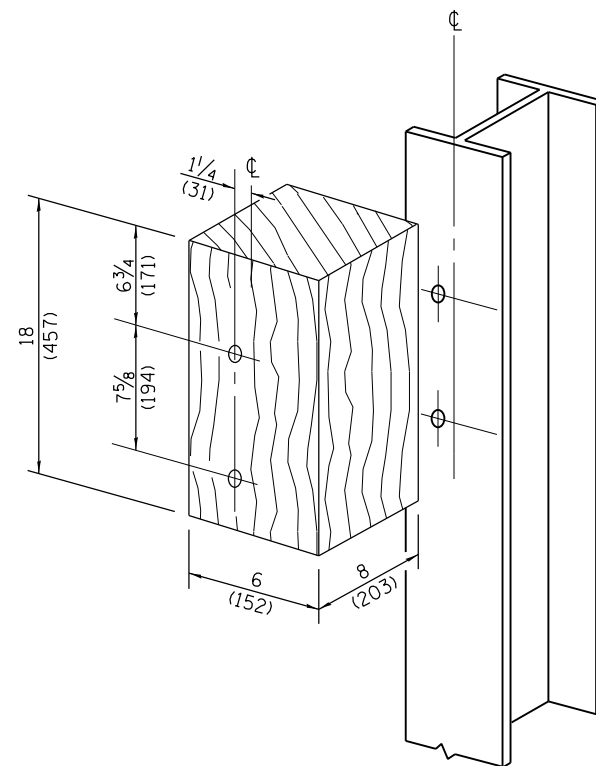
TRAFFIC BARRIER
TERMINAL, TYPE 6

(Sheet 2 of 3)

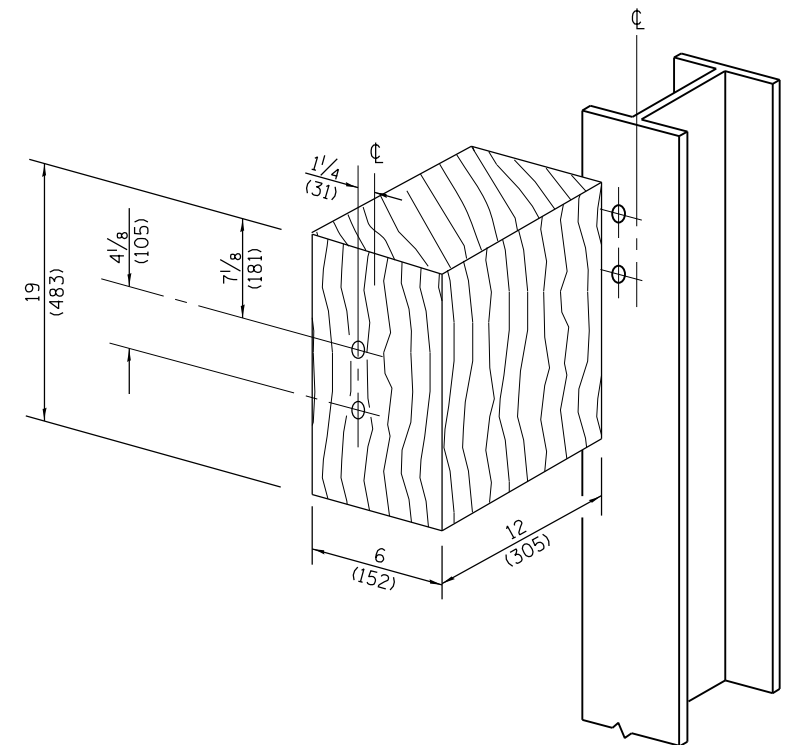
STANDARD 631031-11



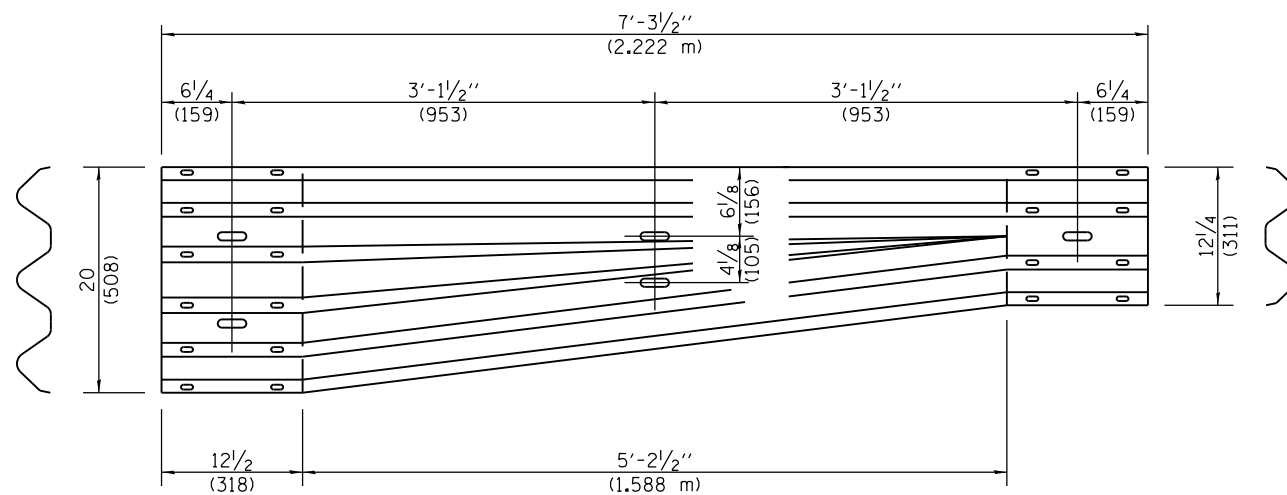
THRIE BEAM END SHOE DETAIL



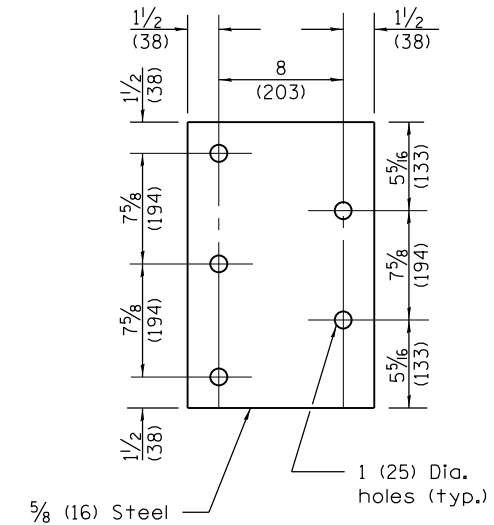
POSTS 1-11 WOOD BLOCKOUT DETAIL



POST 12 WOOD BLOCKOUT DETAIL
(See Standard 630001 for post 13-17 blockouts.)



TRANSITION SECTION
(10 gauge (3.4) rail element)



PARAPET STEEL BEARING PLATE DETAIL

(5 each individual 5x5x5/8 (125x125x16) steel plates with centered 1 (25) holes may be substituted for the plate shown.)