

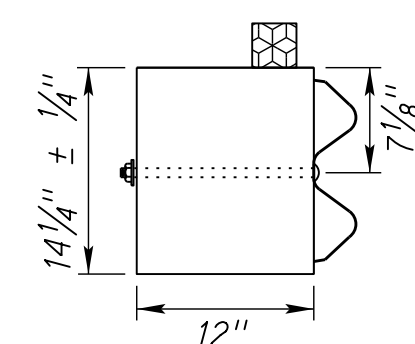
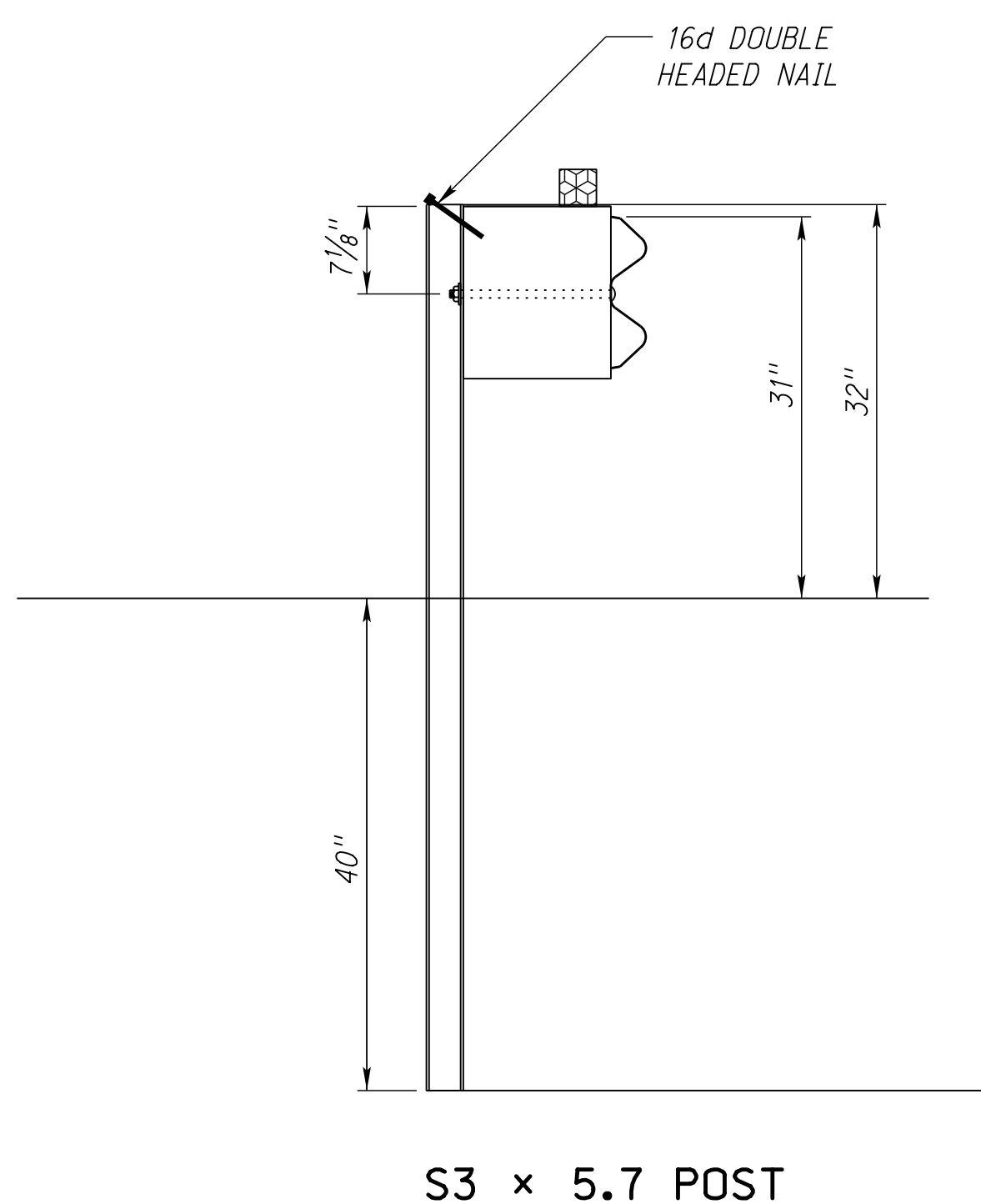
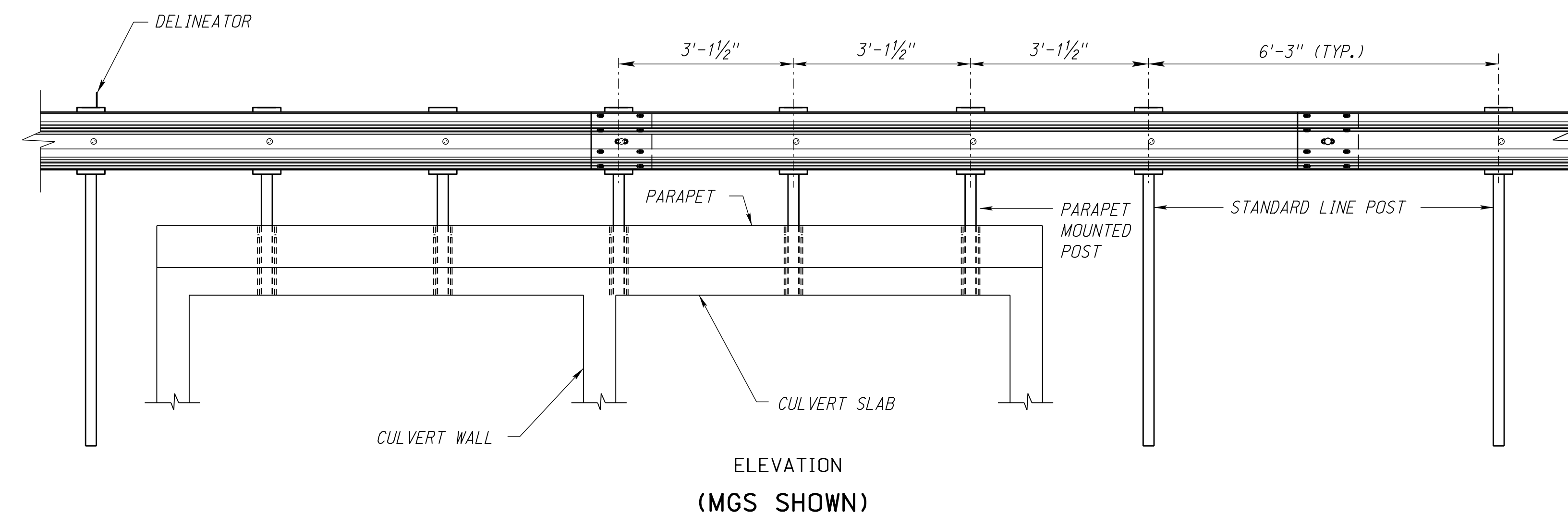
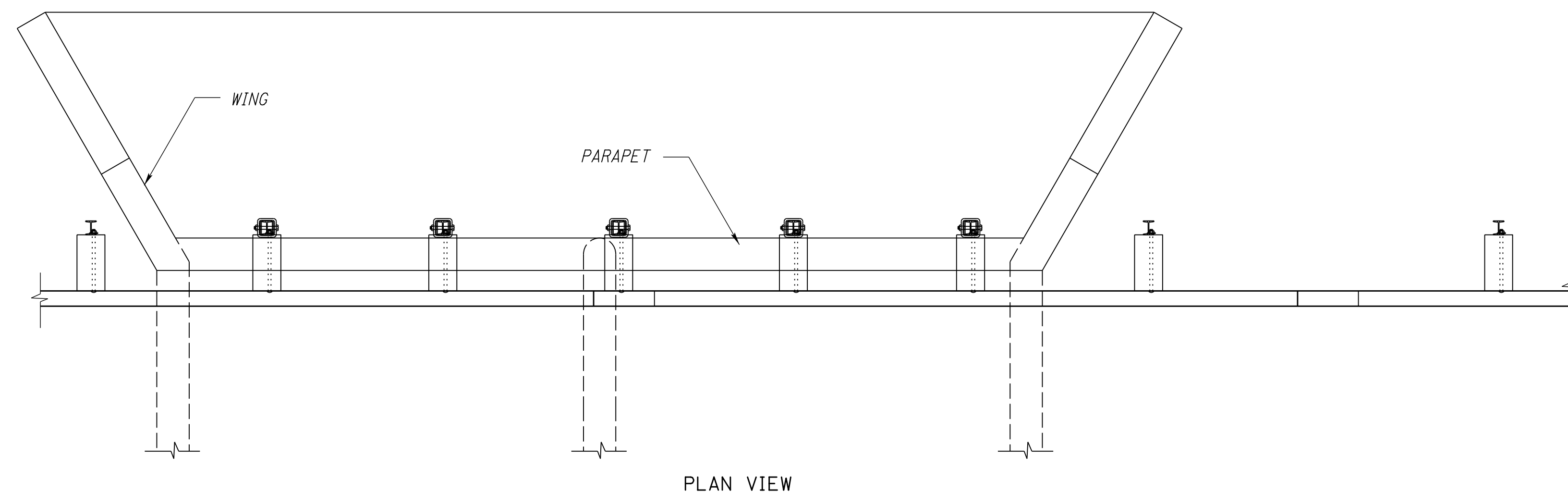
ROADWAY DESIGN DIVISION

Computer: DRDESIGN147

User: dcr13017

Date: 18-DEC-2014 15:57

File: 74700e00.dgn
Scale: 1:100



BLOCK DETAILS
6" x 12" x 14 1/4" ± 1/4"

NOTES:

ALL POSTS SHALL BE MANUFACTURED USING STEEL CONFORMING TO ASTM A 36. THIS SECTION SHALL BE MANUFACTURED SUCH THAT IT CONFORMS TO THE GEOMETRY AND TOLERANCES OF ASTM A6 FOR A S3 x 5.7 S-SECTION. AFTER ALL PUNCHING, DRILLING, STAMPING AND WELDING IS COMPLETE, THE SECTION SHALL BE GALVANIZED ACCORDING TO ASTM A 123. ALL HOLES SHALL BE PUNCHED THROUGH BOTH FLANGES (IN-LINE).

MATERIAL FOR HOT DIPPED ZINC-COATED BOLTS, NUTS AND WASHERS SHALL CONFORM TO ASTM A307 GRADE A.

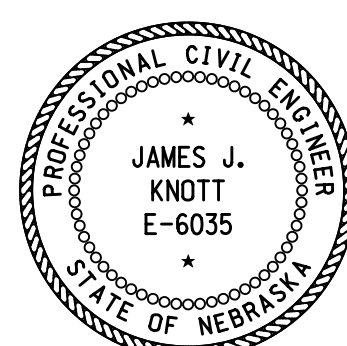
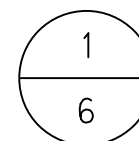
ALL STEEL MEMBERS SHALL BE GALVANIZED IN ACCORDANCE WITH THE STANDARD SPECIFICATIONS.

BUTTON HEAD BOLT 5/8" DIA. x LENGTH AS REQUIRED, SECURED WITH WASHER AND HEX NUT.

UNLESS NOTED OTHERWISE ALL WELDS AT E70xx.

FOR ADDITIONAL DETAILS SEE PLAN 743.

DELINEATORS SUBSIDIARY TO BRIDGE APPROACH SECTION.

REV. NO.	DATE	DESCRIPTION OF REVISION
NEBRASKA DEPARTMENT OF ROADS STANDARD PLAN NO. 7470 PARAPET GUARDRAIL ATTACHMENT		
ACCEPTED BY FHWA FOR USE ON THE NATIONAL HIGHWAY SYSTEM:		 ?????????? DATE ORIGINAL: ?????????? DATE
		

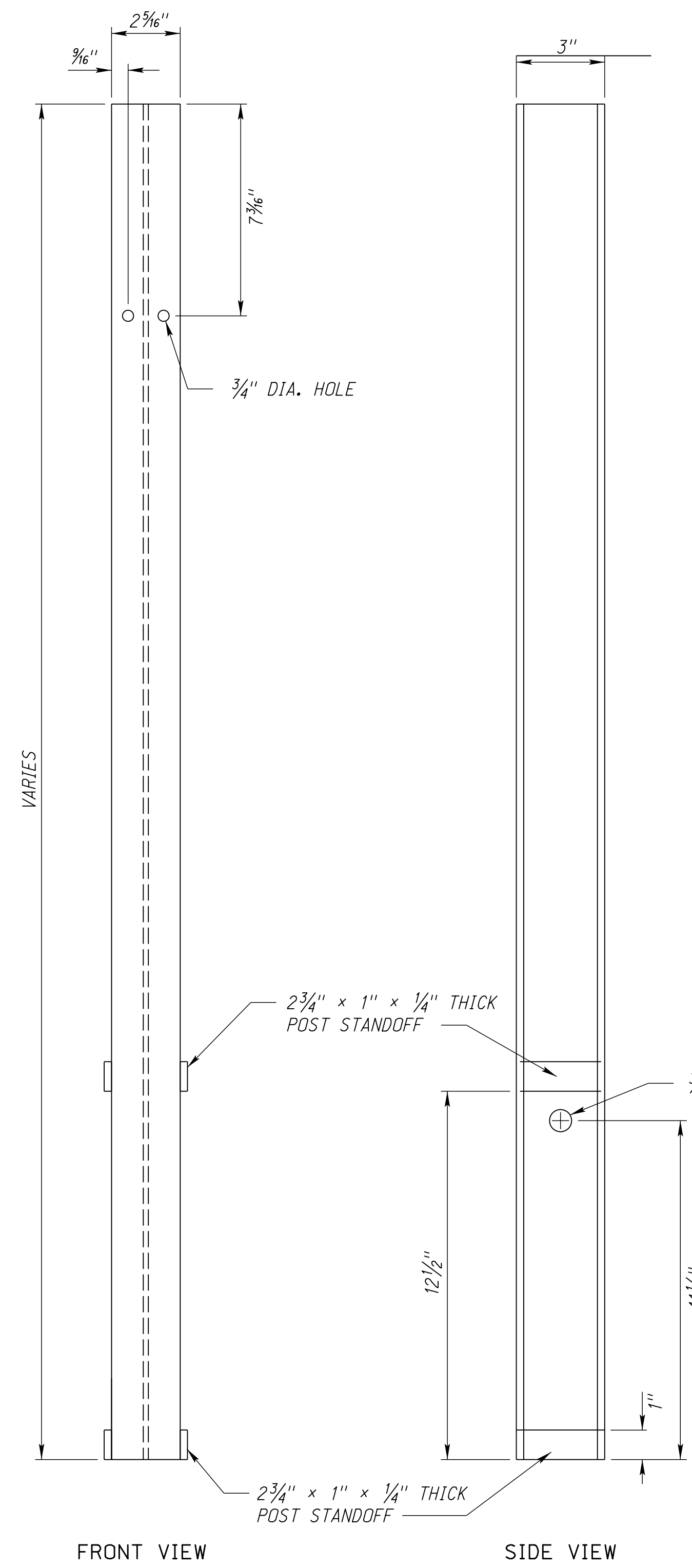
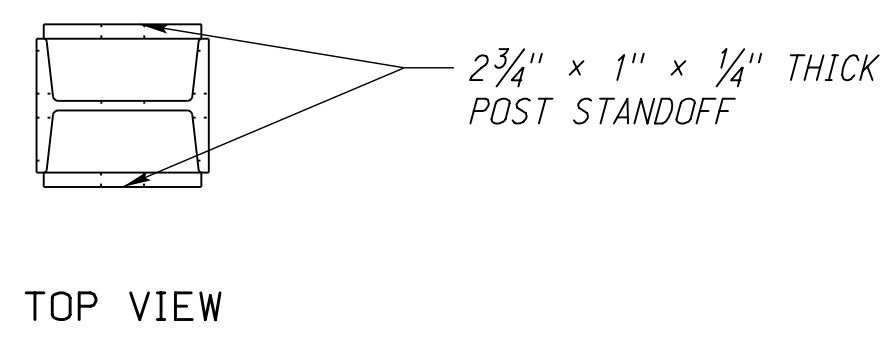
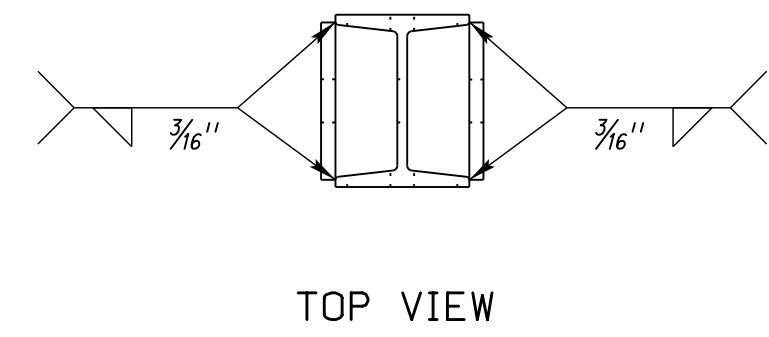
ROADWAY DESIGN DIVISION

Computer: DRDESIGN147

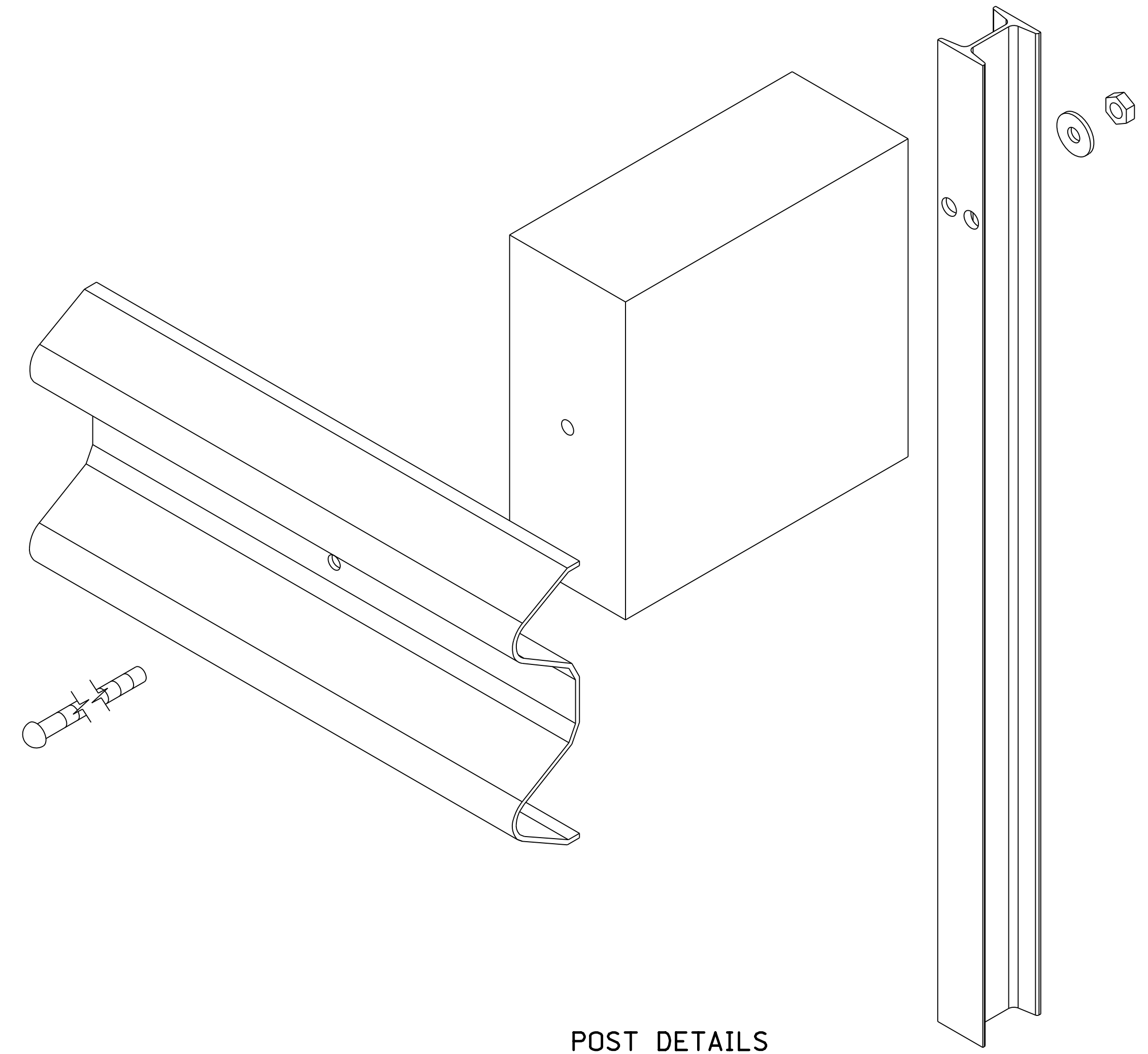
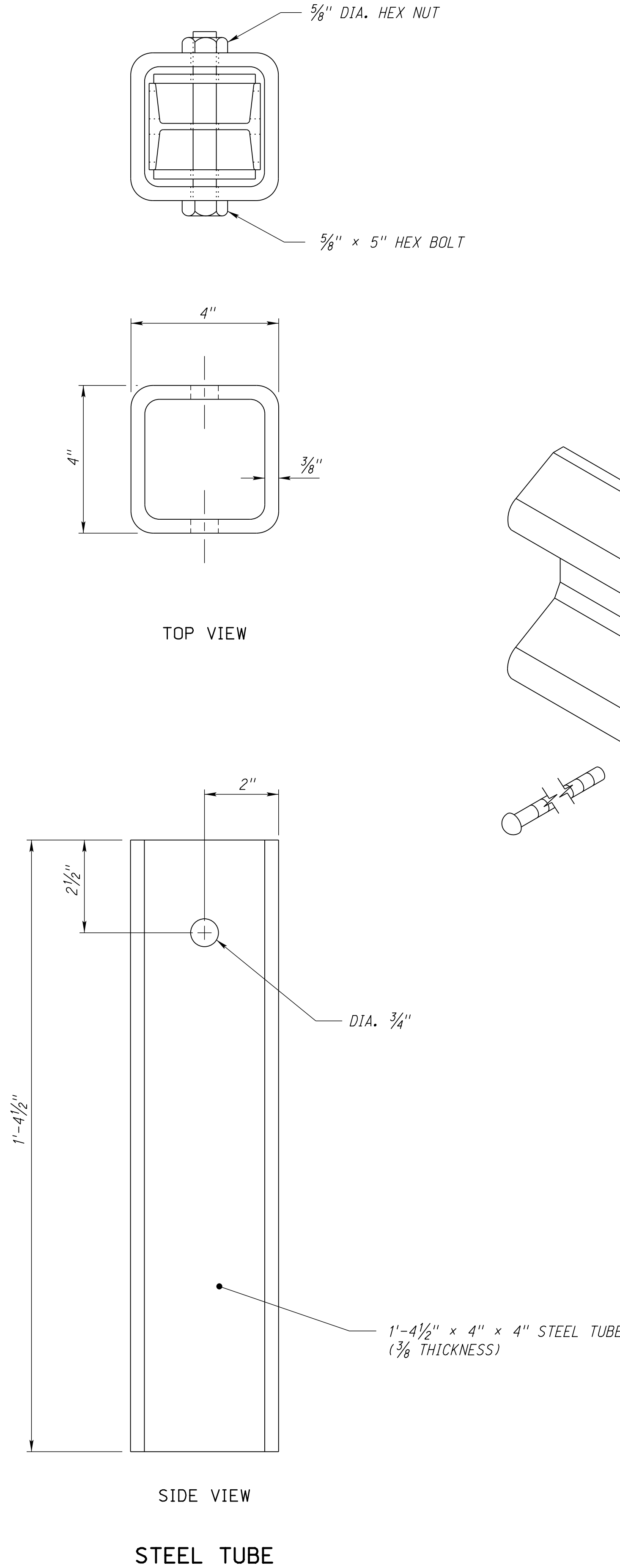
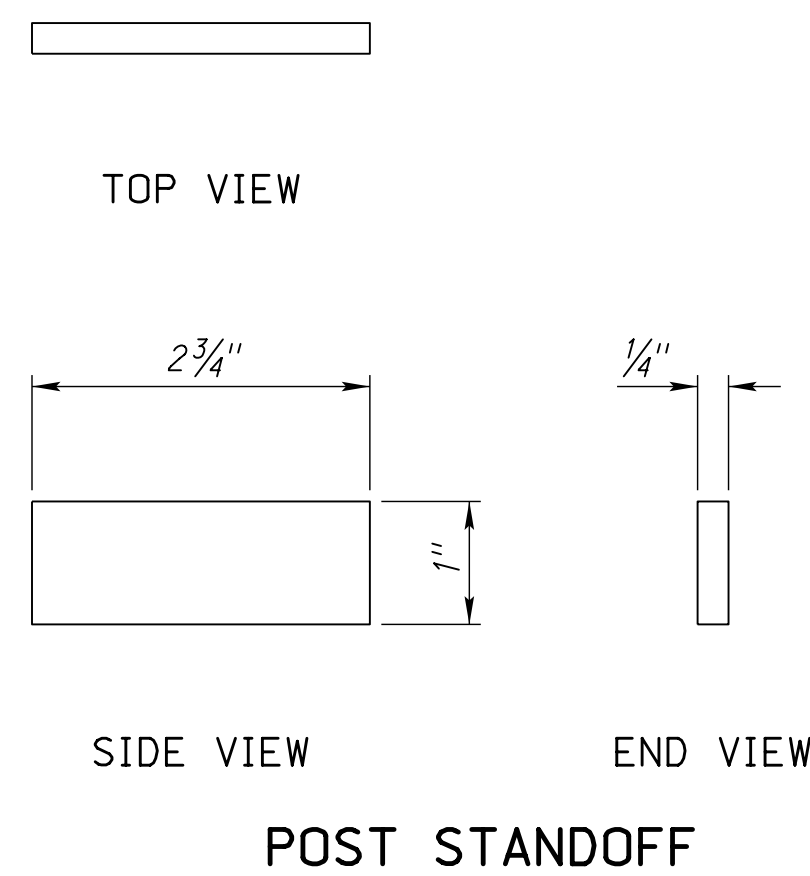
User: ddr13017

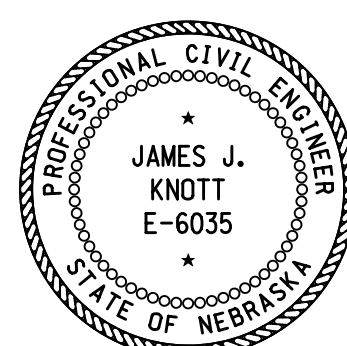
Date: 18-DEC-2014 15:57

File: 74700e00.dgn
Scale: 1:100



S3 x 5.7 POST



REV. NO.	DATE	DESCRIPTION OF REVISION
NEBRASKA DEPARTMENT OF ROADS STANDARD PLAN NO. 7470 PARAPET GUARDRAIL ATTACHMENT		
ACCEPTED BY FHWA FOR USE ON THE NATIONAL HIGHWAY SYSTEM:		<div style="border: 1px solid black; border-radius: 50%; padding: 5px; display: inline-block;"> 2 6 </div>
		
DATE: ?????????? ORIGINAL: ?????????? DATE:		

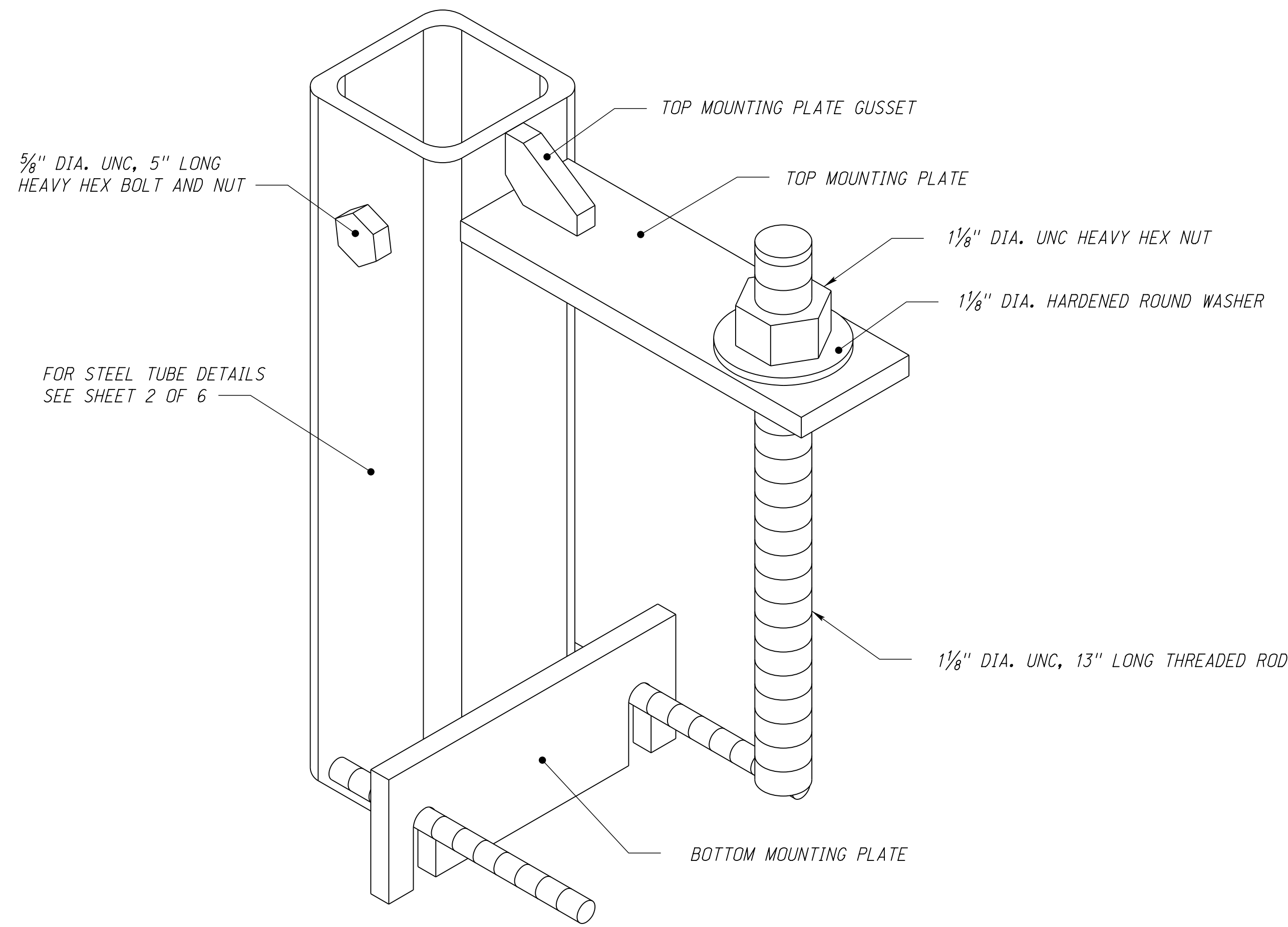
ROADWAY DESIGN DIVISION

Computer: DRDESIGN147

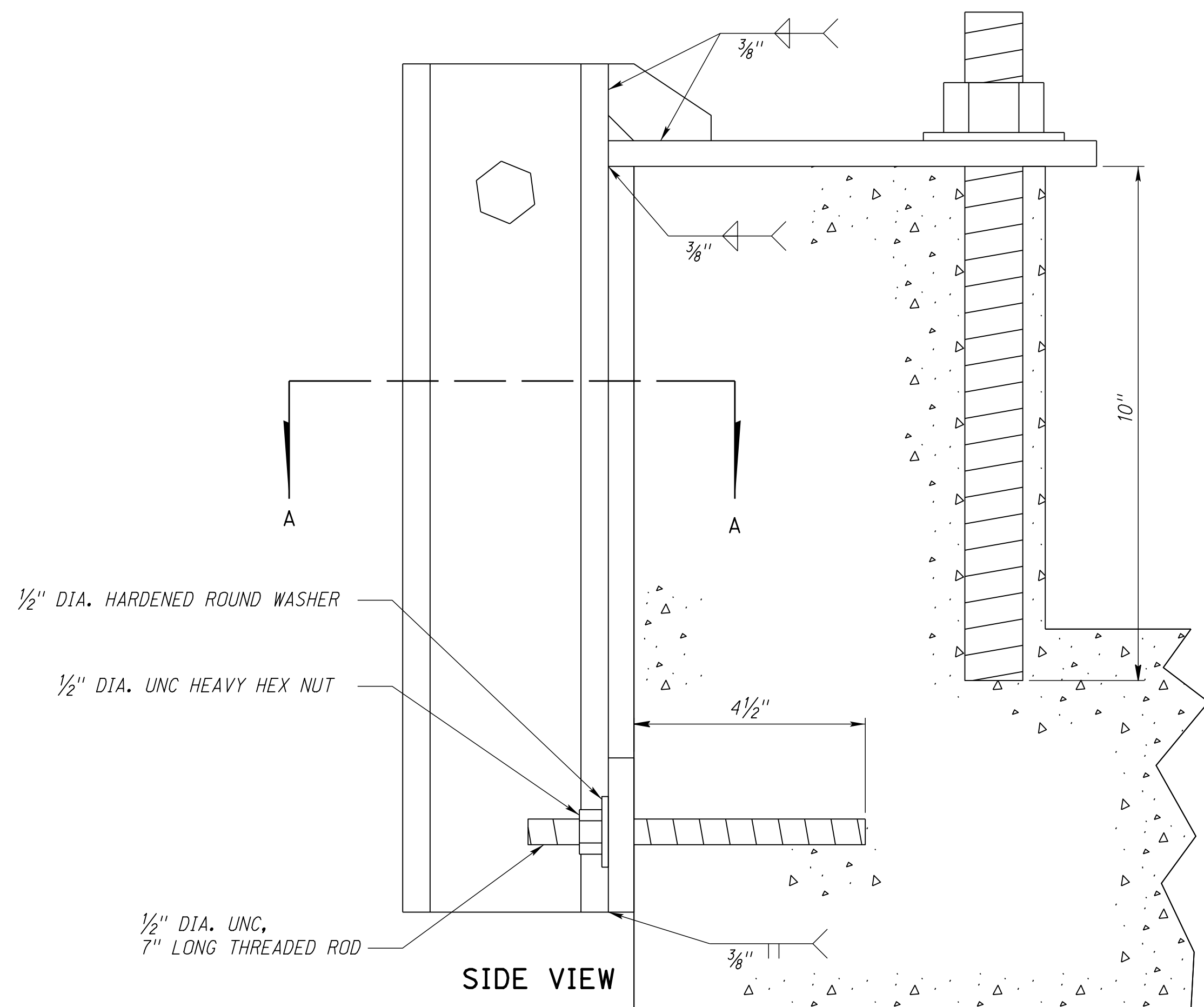
User: dcr13017

Date: 18-DEC-2014 15:57

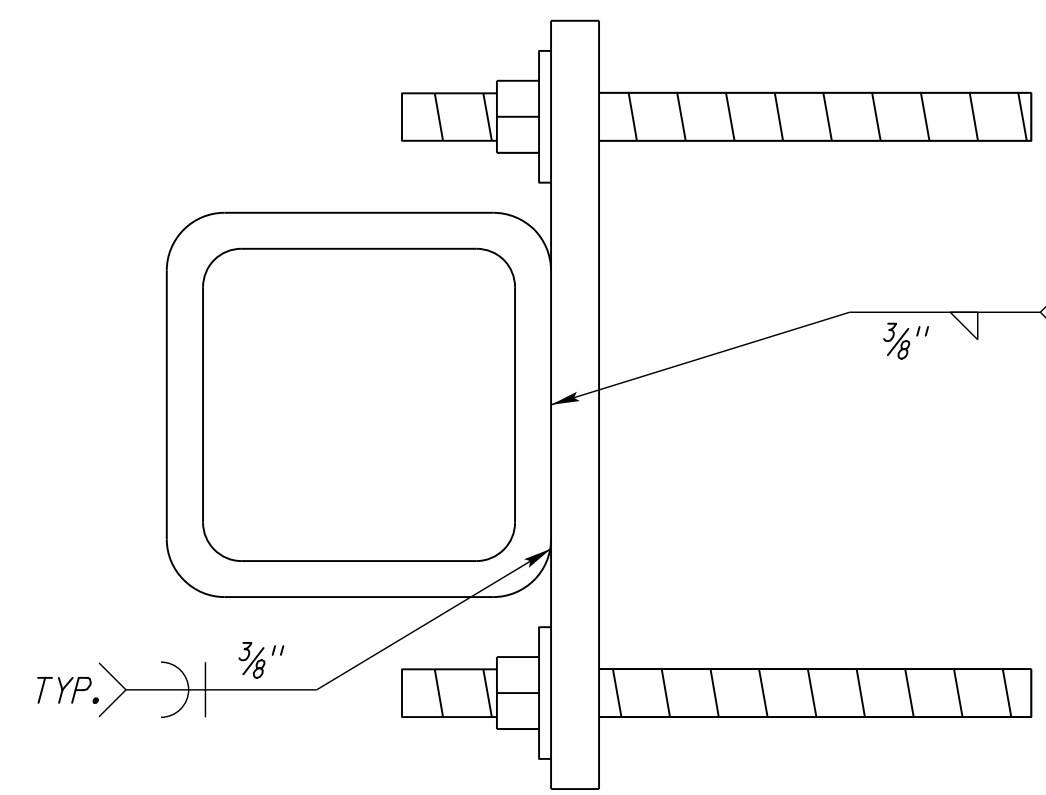
File: 7470e00.dgn
Scale: 1:100



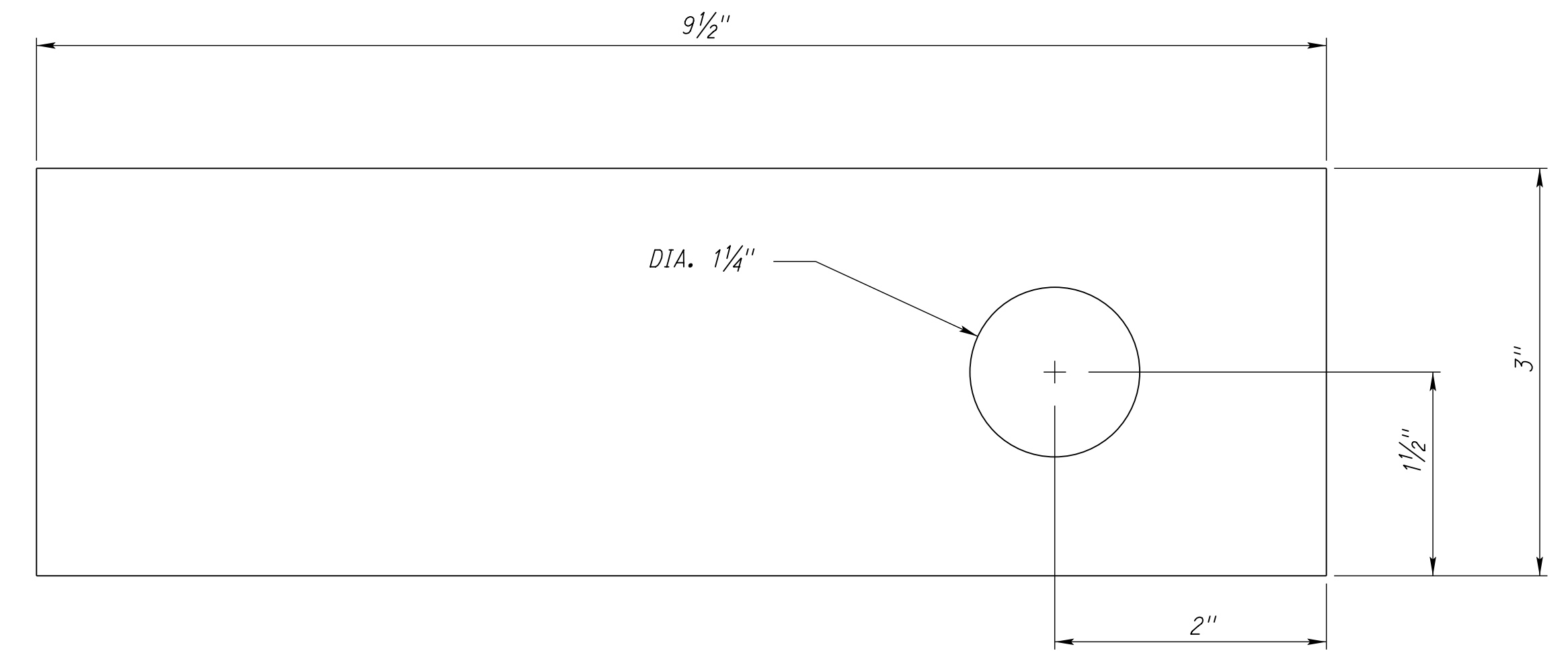
ISOMETRIC VIEW



SIDE VIEW

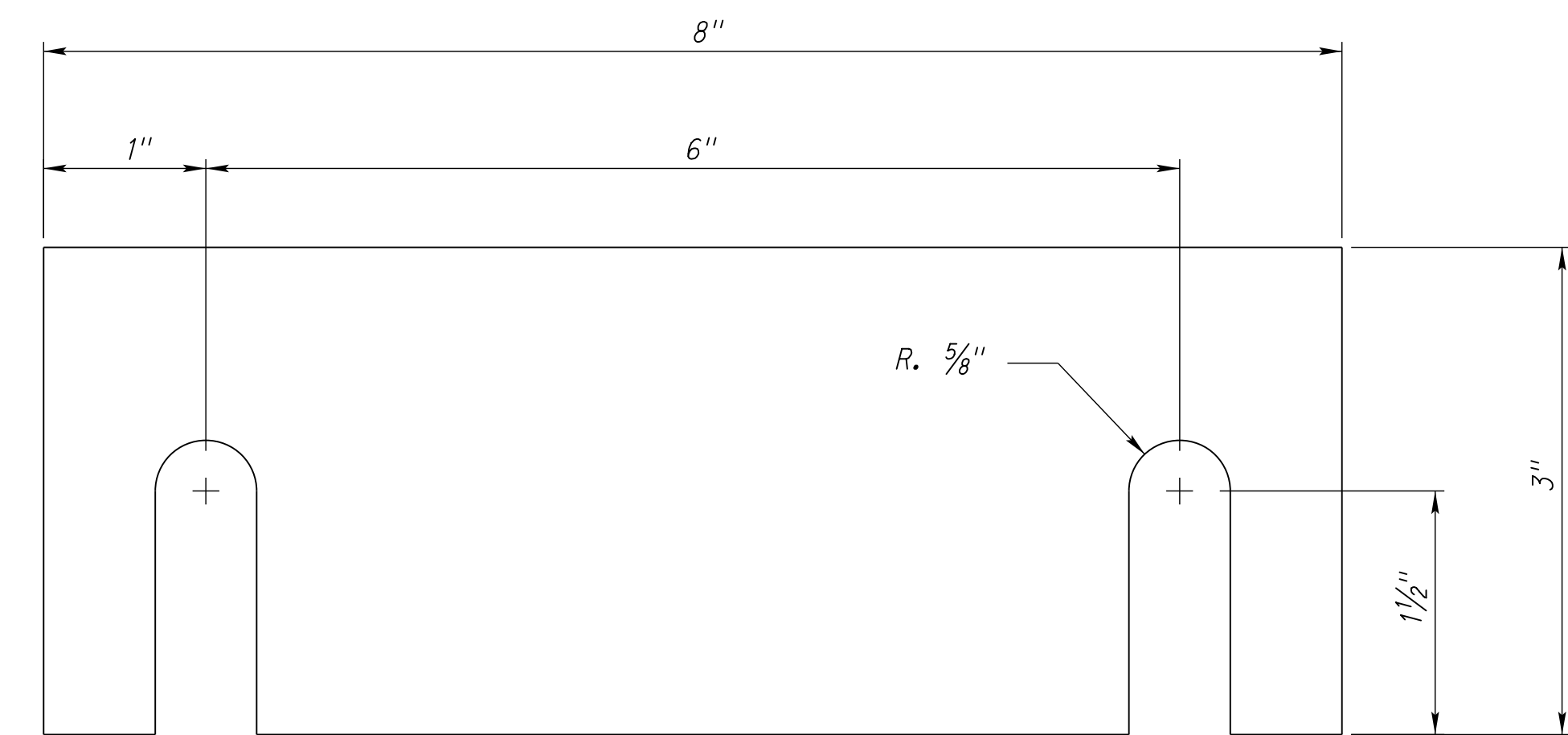


SECTION A-A



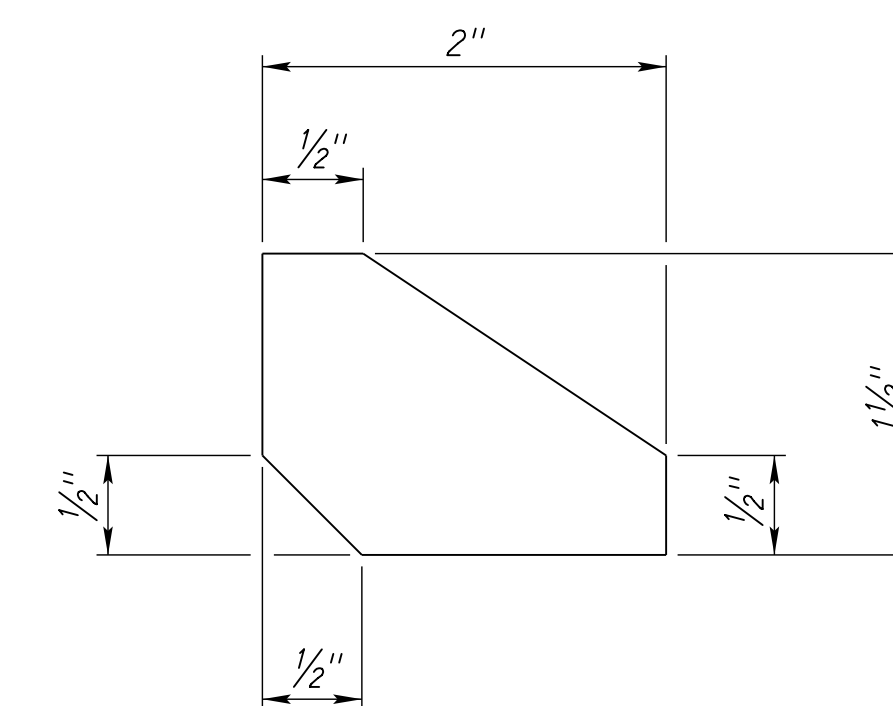
TOP MOUNTING PLATE

℞ 9 1/2" × 3" × 1/2"



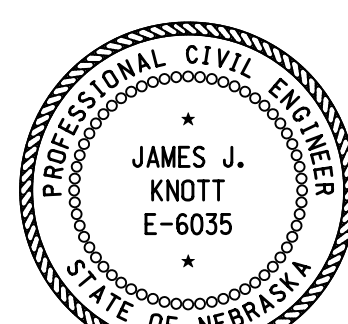
BOTTOM MOUNTING PLATE

℞ 8" × 3" × 1/2"



TOP MOUNTING PLATE GUSSET

℞ 2" × 1 1/2" × 1/2"

REV. NO.	DATE	DESCRIPTION OF REVISION
NEBRASKA DEPARTMENT OF ROADS STANDARD PLAN NO. 7470 PARAPET GUARDRAIL ATTACHMENT		
ACCEPTED BY FHWA FOR USE ON THE NATIONAL HIGHWAY SYSTEM:		<div style="border: 1px solid black; border-radius: 50%; padding: 5px; display: inline-block;"> 3 6 </div>
<div style="display: flex; justify-content: space-between;"> <div style="text-align: center;">  </div> <div style="text-align: center;"> MMM DD, YYYY DATE ORIGINAL: MMM DD, YYYY DATE </div> </div>		

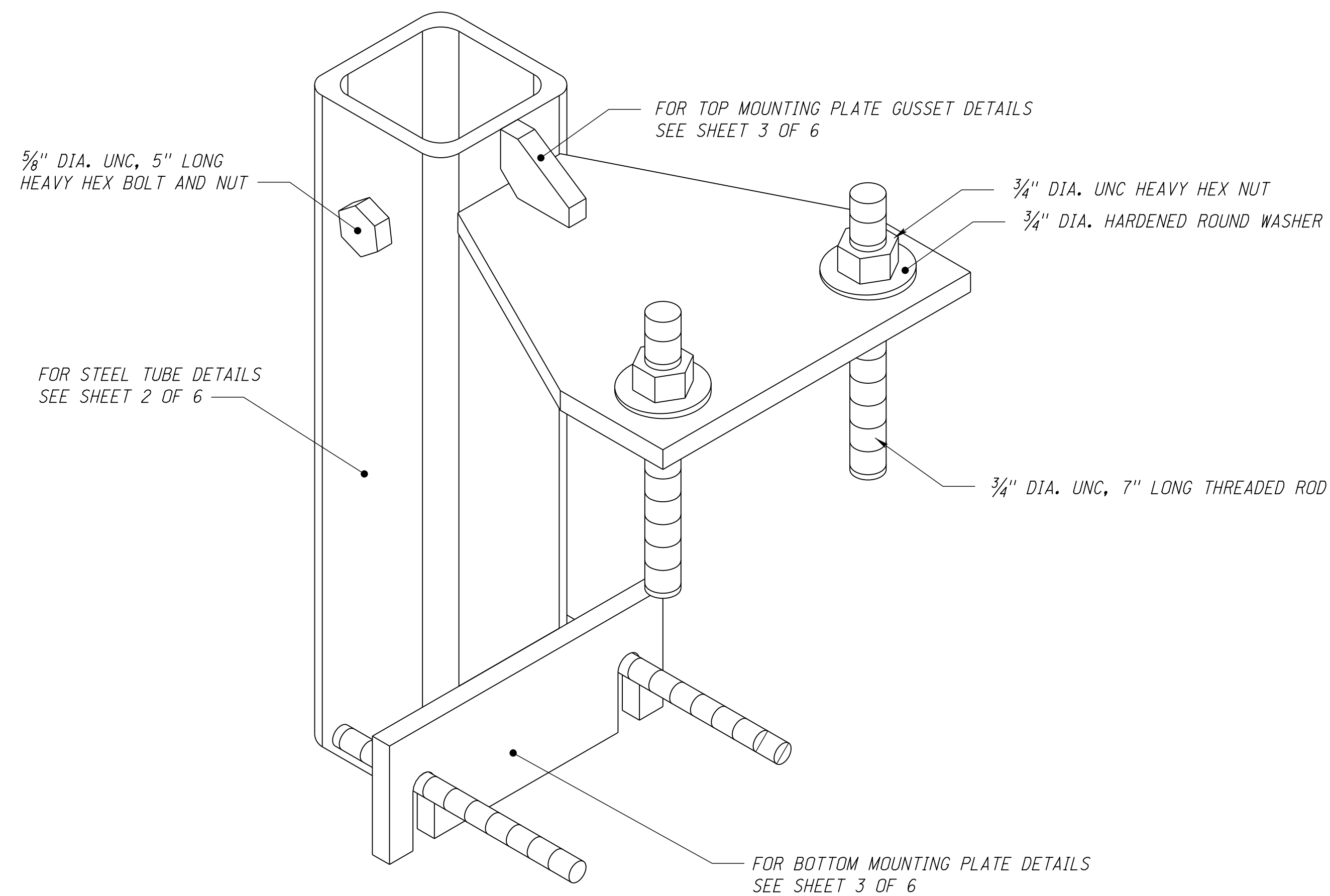
ROADWAY DESIGN DIVISION

Computer: DRDESIGN147

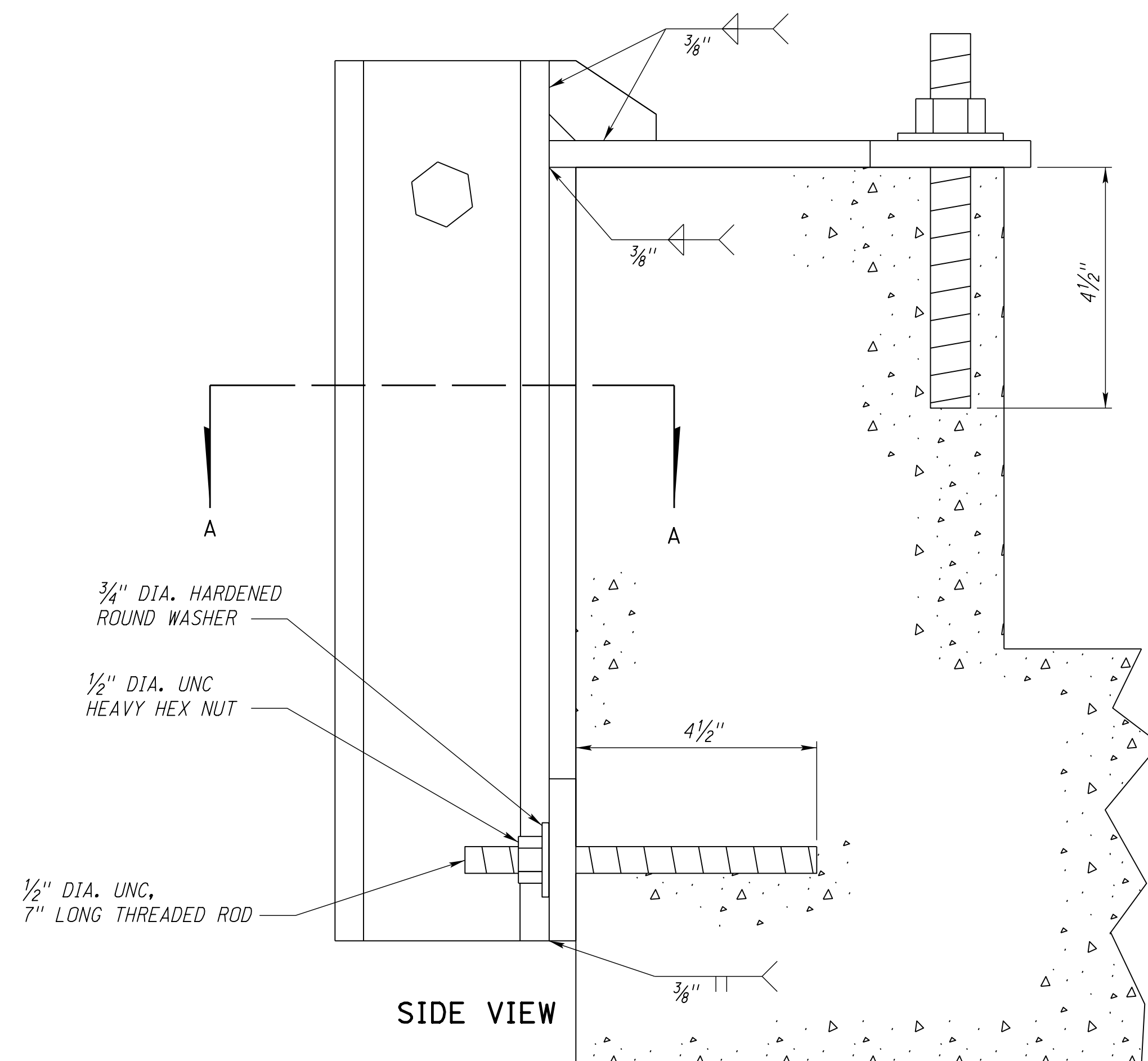
User: dcr13017

Date: 18-DEC-2014 15:57

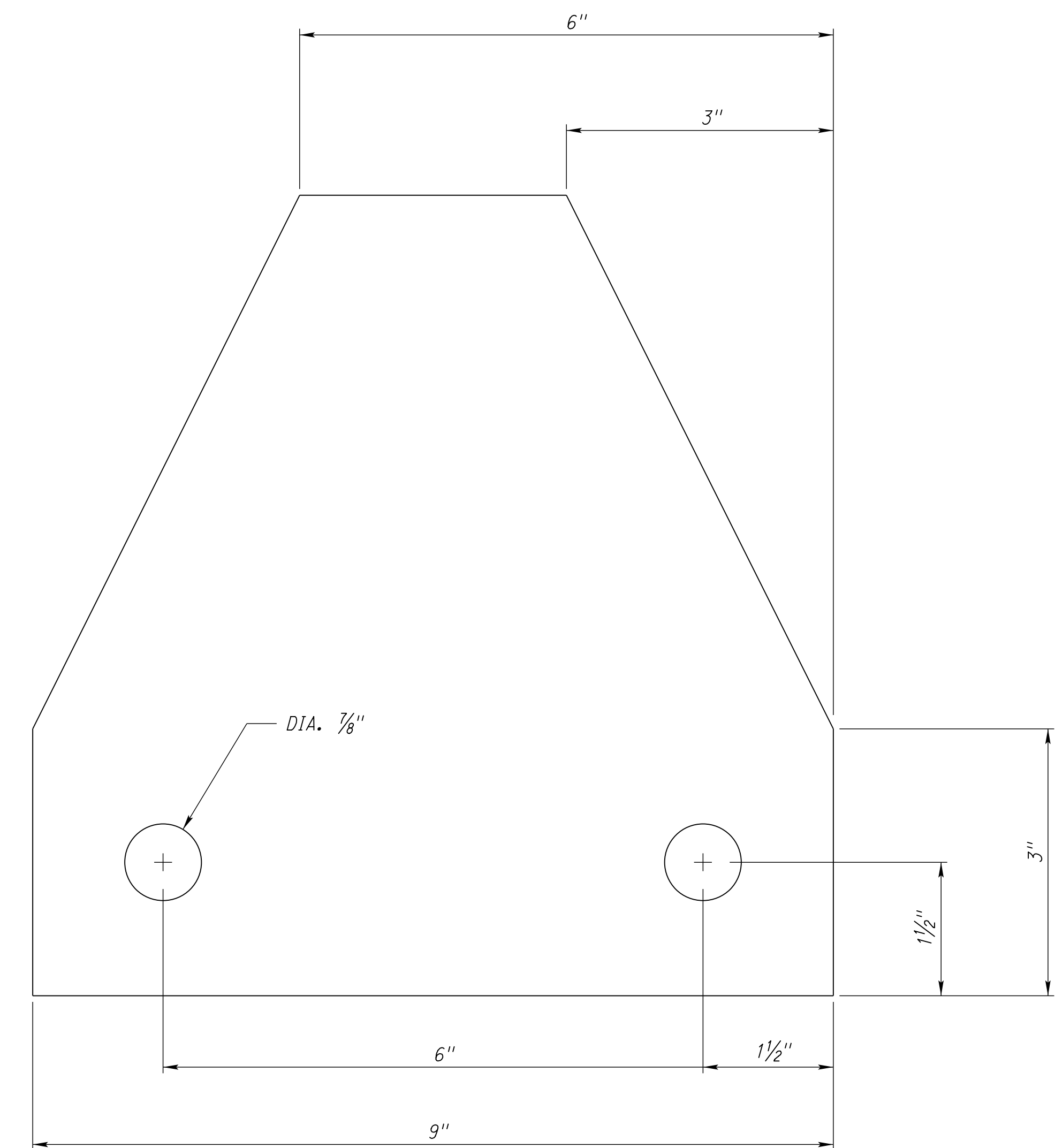
File: 74700e00.dgn
Scale: 1:100



ISOMETRIC VIEW

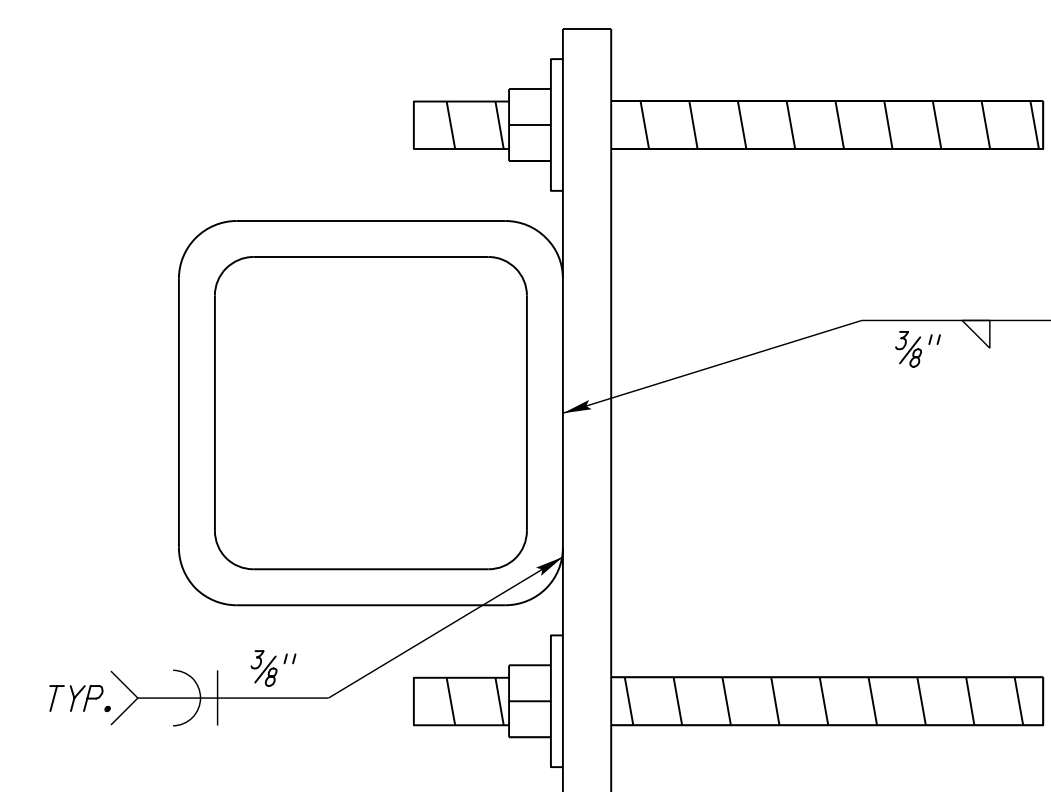


SIDE VIEW

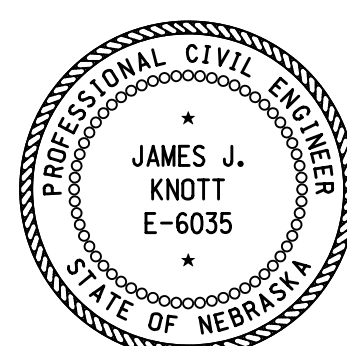


TOP MOUNTING PLATE

9" x 9" x 1/2"



SECTION A-A

REV. NO.	DATE	DESCRIPTION OF REVISION
NEBRASKA DEPARTMENT OF ROADS STANDARD PLAN NO. 7470 PARAPET GUARDRAIL ATTACHMENT		
ACCEPTED BY FHWA FOR USE ON THE NATIONAL HIGHWAY SYSTEM:		<div style="border: 1px solid black; border-radius: 50%; padding: 5px; width: 30px; margin: 0 auto;">4 6</div>
<div style="display: flex; justify-content: space-between;"> <div style="text-align: center;">  </div> <div style="text-align: center;"> <p>MMMM DD, YYYY DATE</p> <p>ORIGINAL: MMM DD, YYYY DATE</p> </div> </div>		

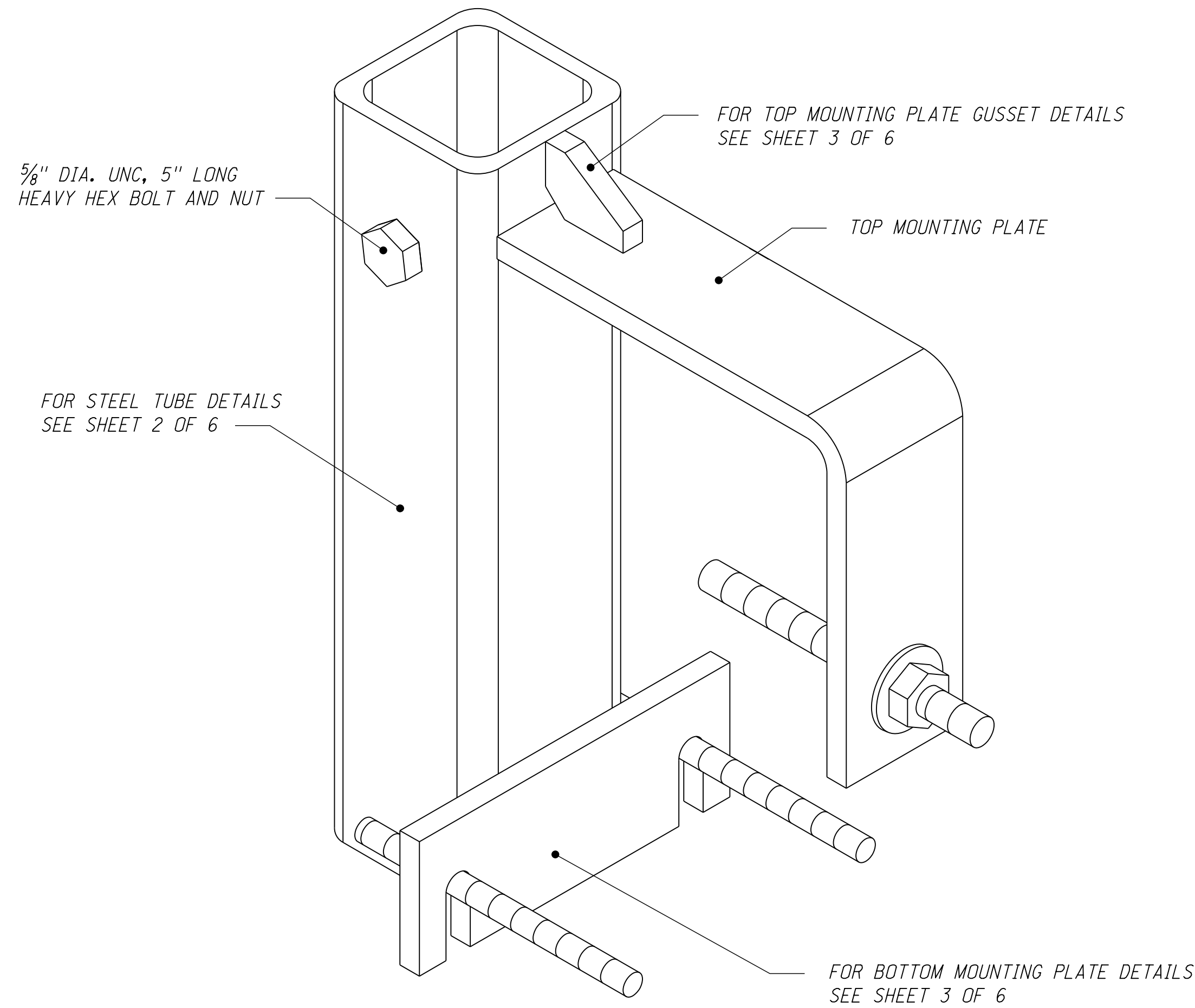
ROADWAY DESIGN DIVISION

Computer: DRDESIGN147

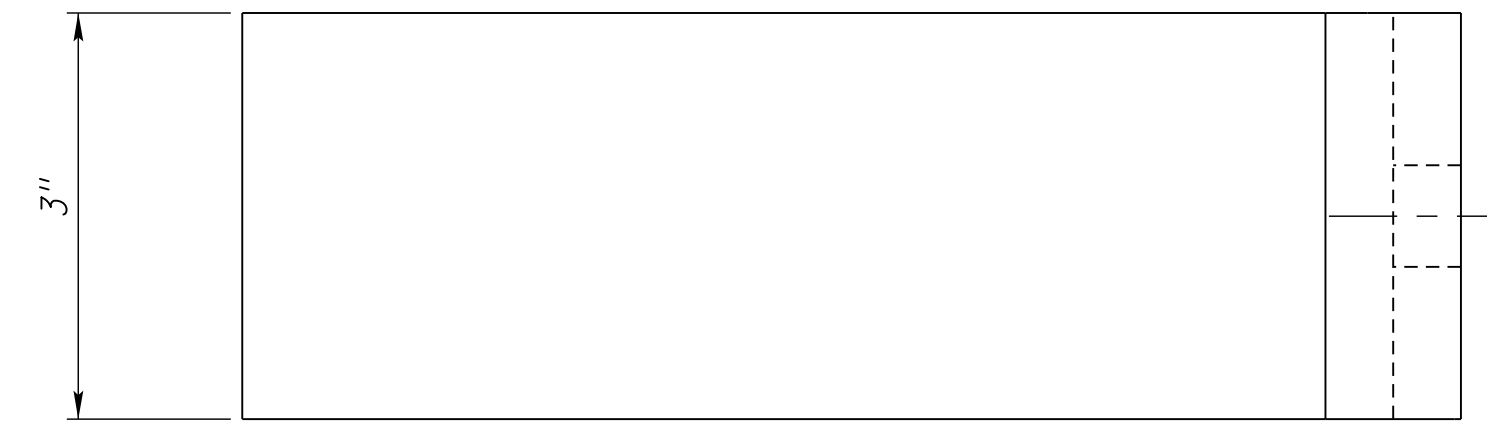
User: dcr13017

Date: 18-DEC-2014 15:57

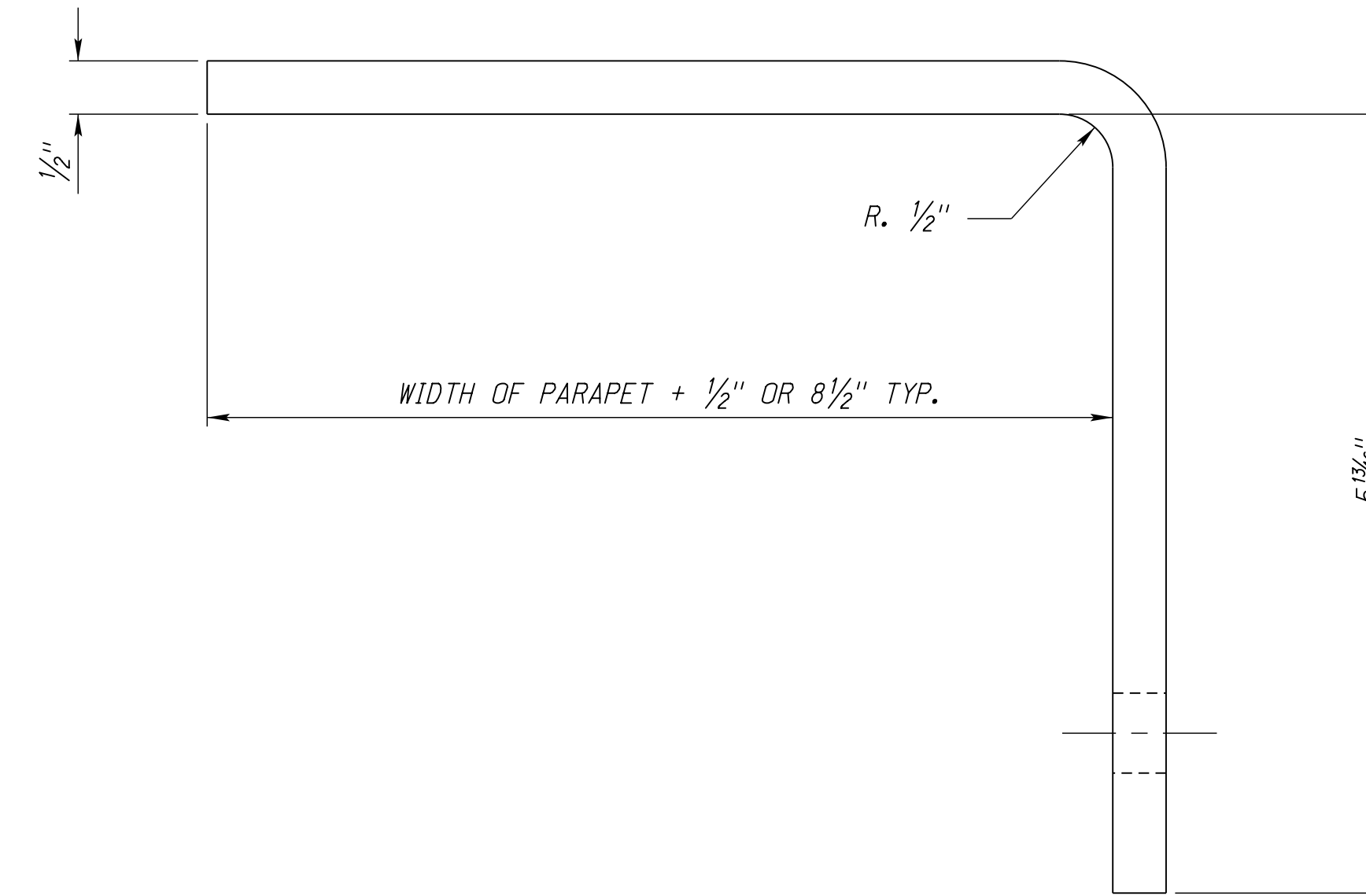
File: 74700e00.dgn
Scale: 1:100



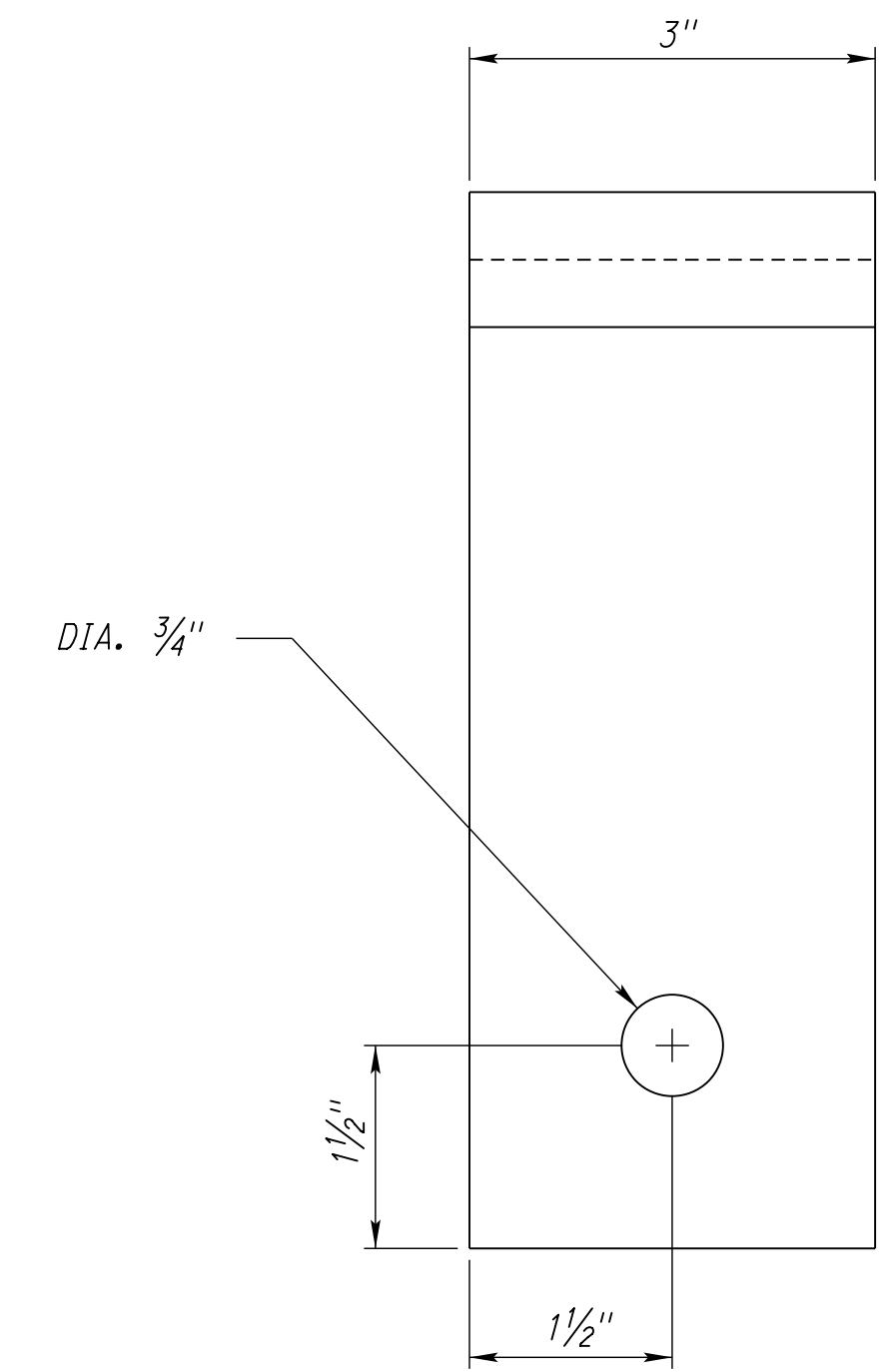
ISOMETRIC VIEW



TOP VIEW

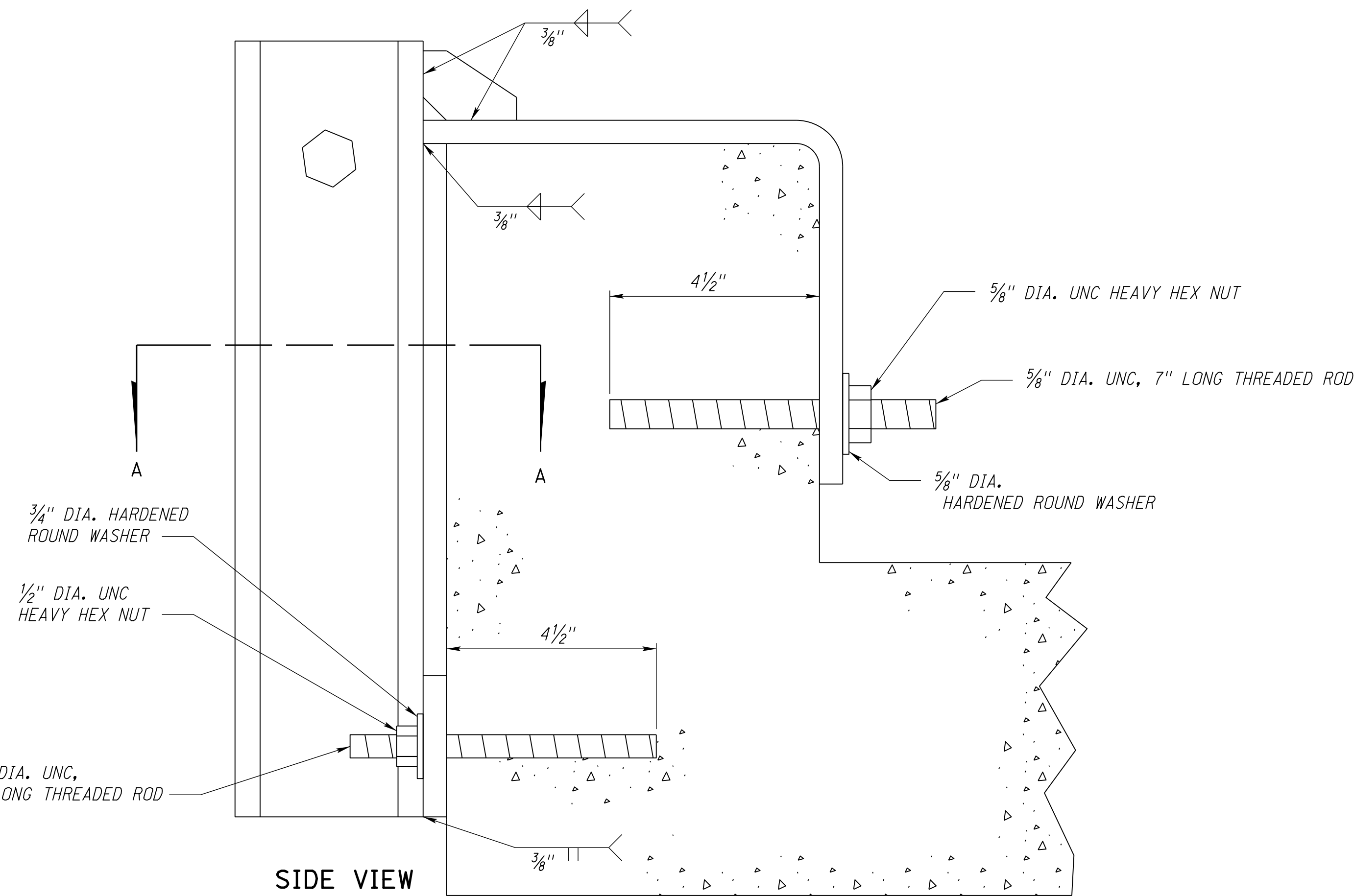


SIDE VIEW

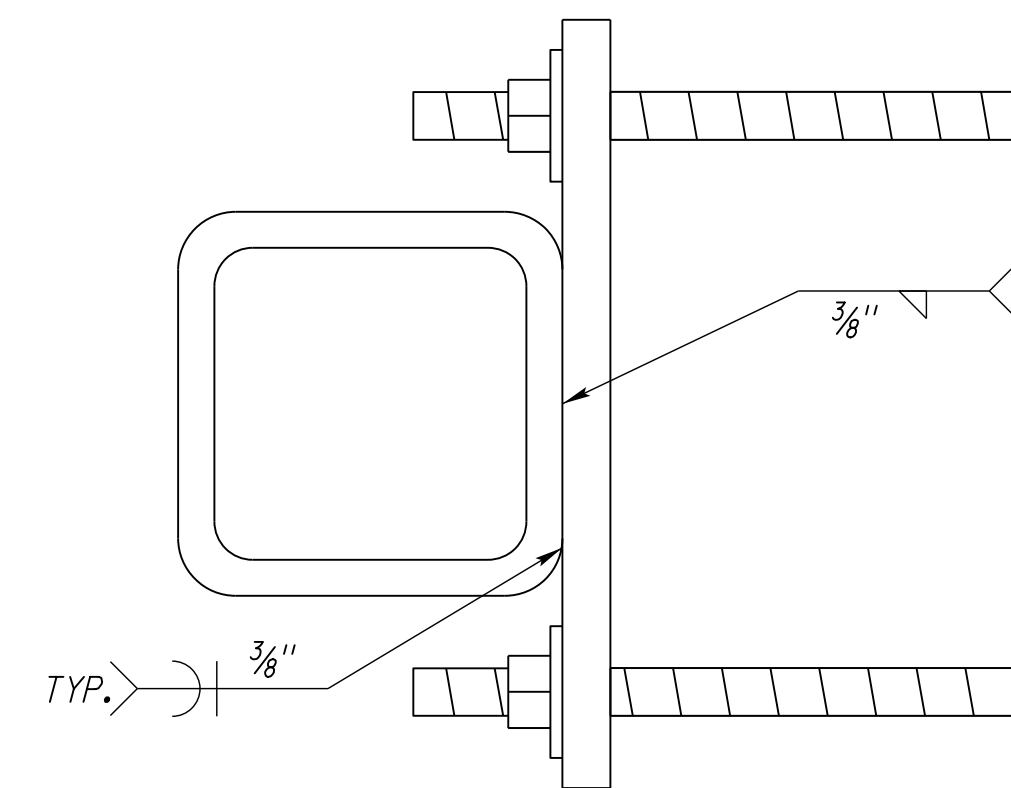


FRONT VIEW

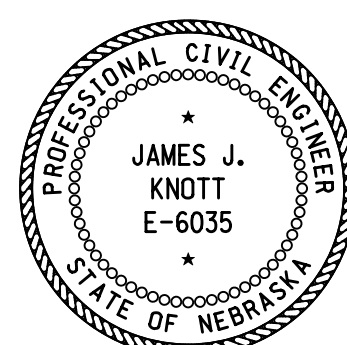
TOP MOUNTING PLATE
R 20" x 3" x 1/2"



SIDE VIEW



SECTION A-A

REV. NO.	DATE	DESCRIPTION OF REVISION
NEBRASKA DEPARTMENT OF ROADS STANDARD PLAN NO. 7470 PARAPET GUARDRAIL ATTACHMENT		
ACCEPTED BY FHWA FOR USE ON THE NATIONAL HIGHWAY SYSTEM:		5 6
		
MMM DD, YYYY DATE		ORIGINAL: MMM DD, YYYY DATE

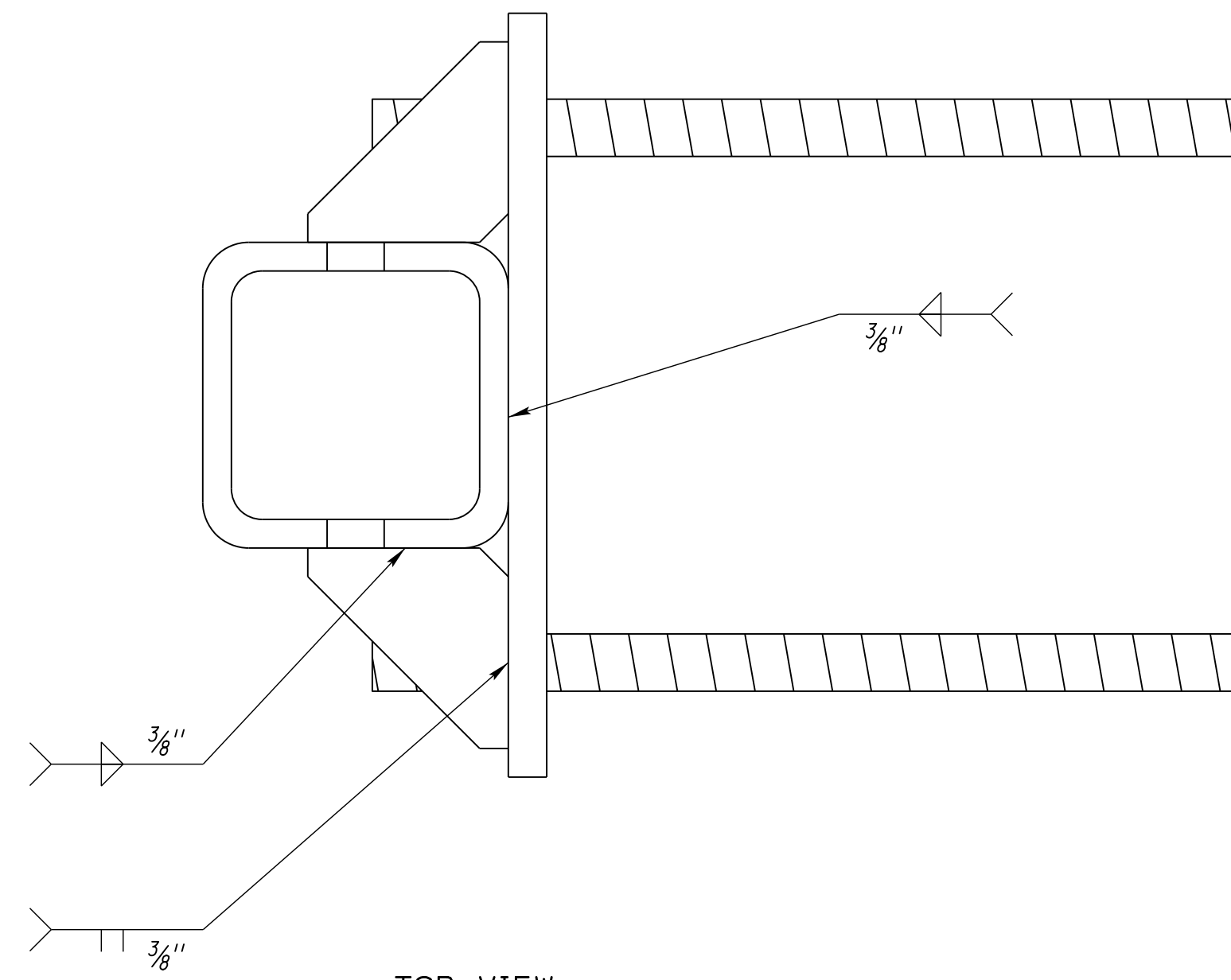
ROADWAY DESIGN DIVISION

Computer: DRDESIGN147

User: dcr13017

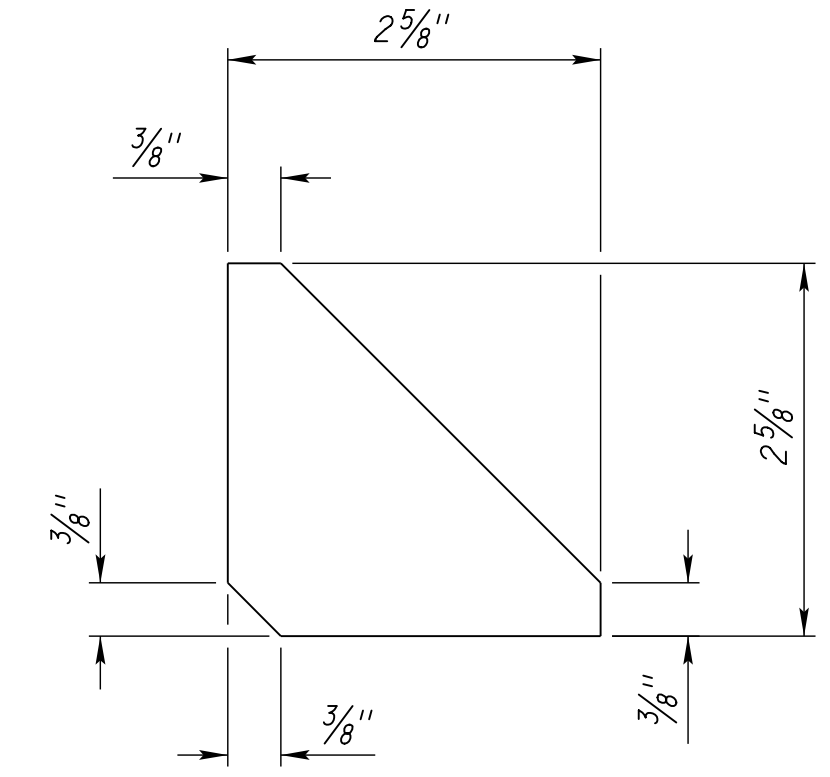
Date: 18-DEC-2014 15:57

File: 74700e00.dgn
Scale: 1:100



TOP MOUNTING PLATE

PL 10" x 3" x 1/2"



TOP PLATE GUSSET

PL 3" x 3" x 1/4"

FOR STEEL TUBE DETAILS
SEE SHEET 2 OF 6

5/8" DIA. UNC, 5" LONG
HEAVY HEX BOLT AND NUT

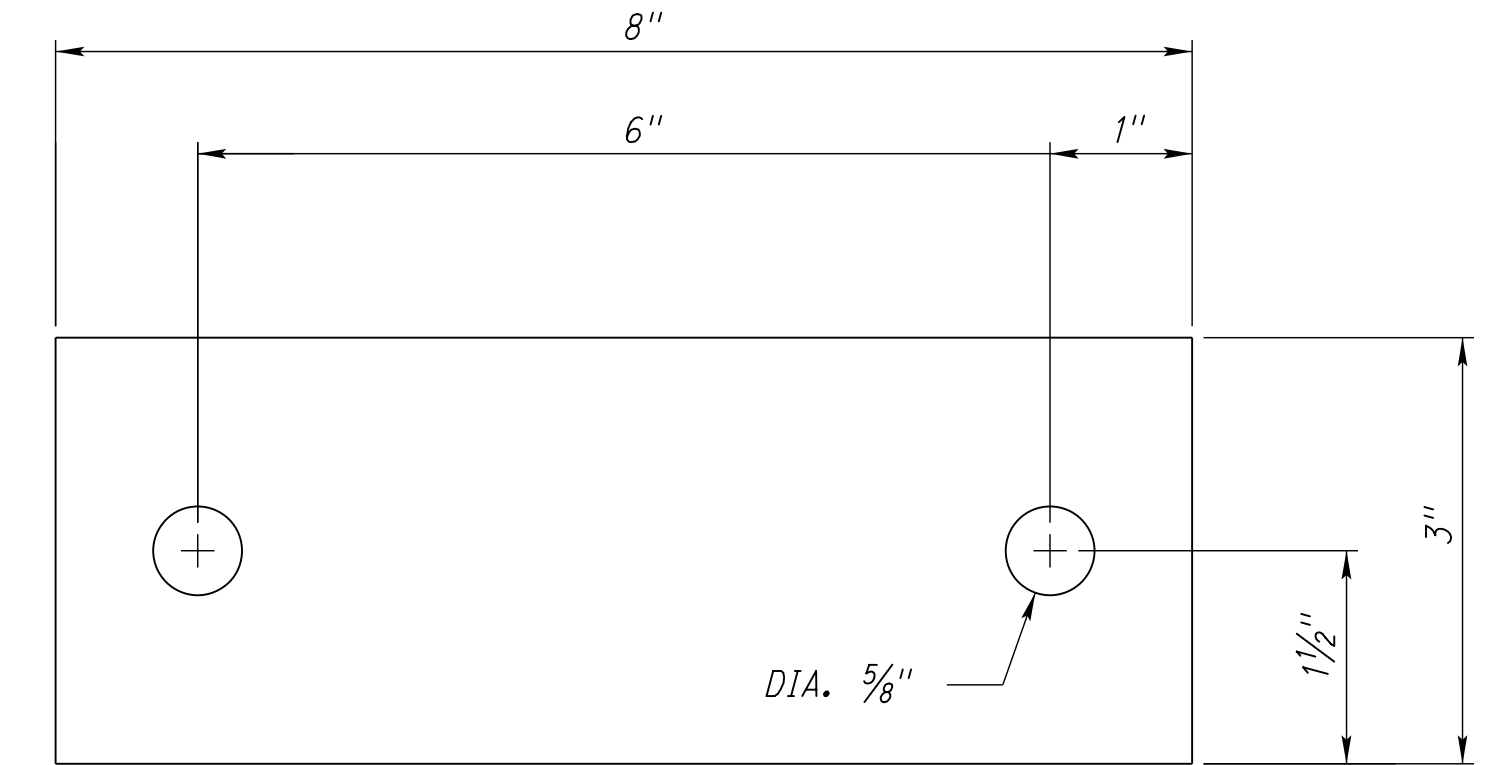
TOP PLATE GUSSET

TOP PLATE GUSSET

TOP MOUNTING PLATE

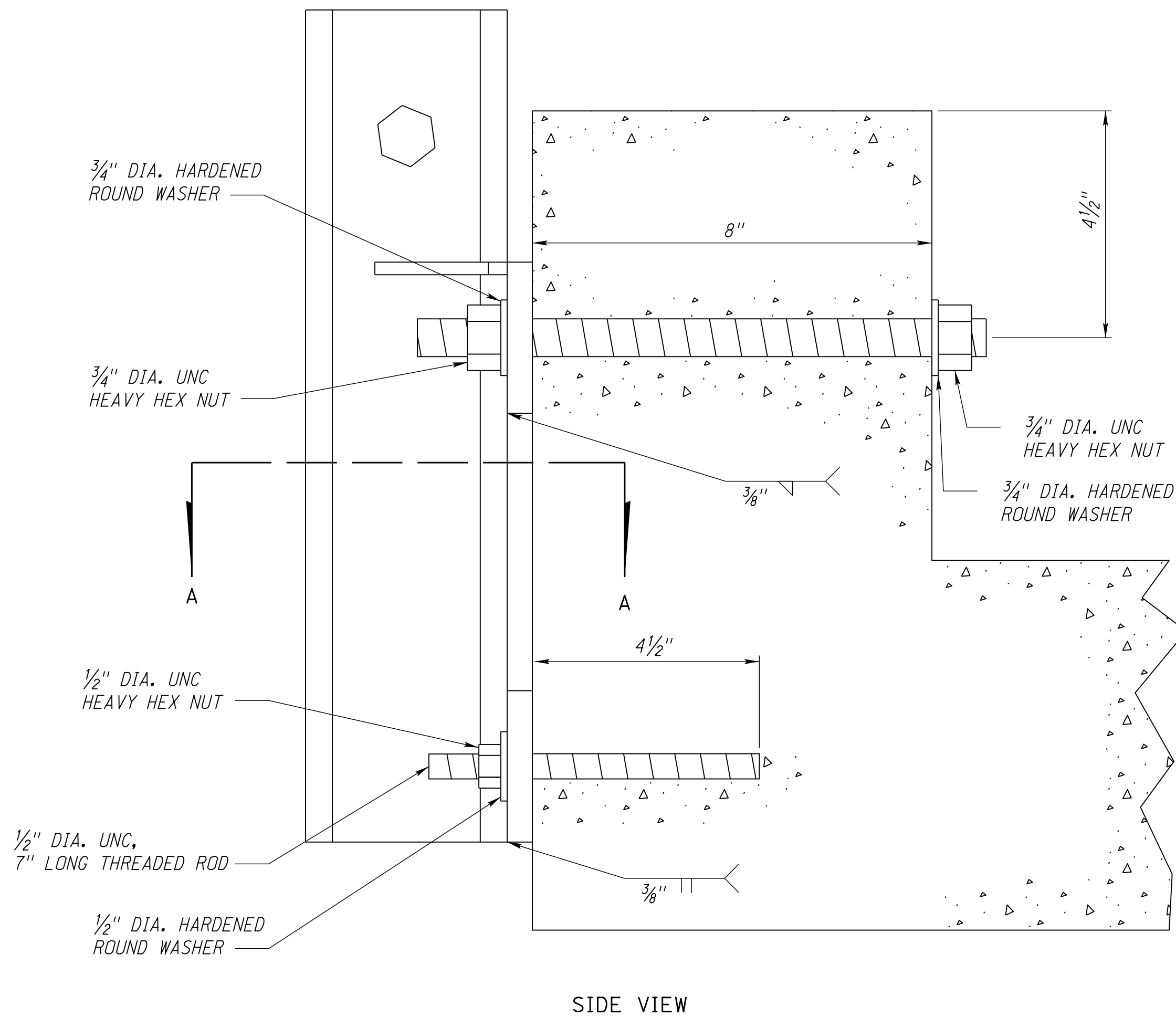
3/4" DIA. UNC, 16"
LONG THREADED ROD

BOTTOM MOUNTING PLATE



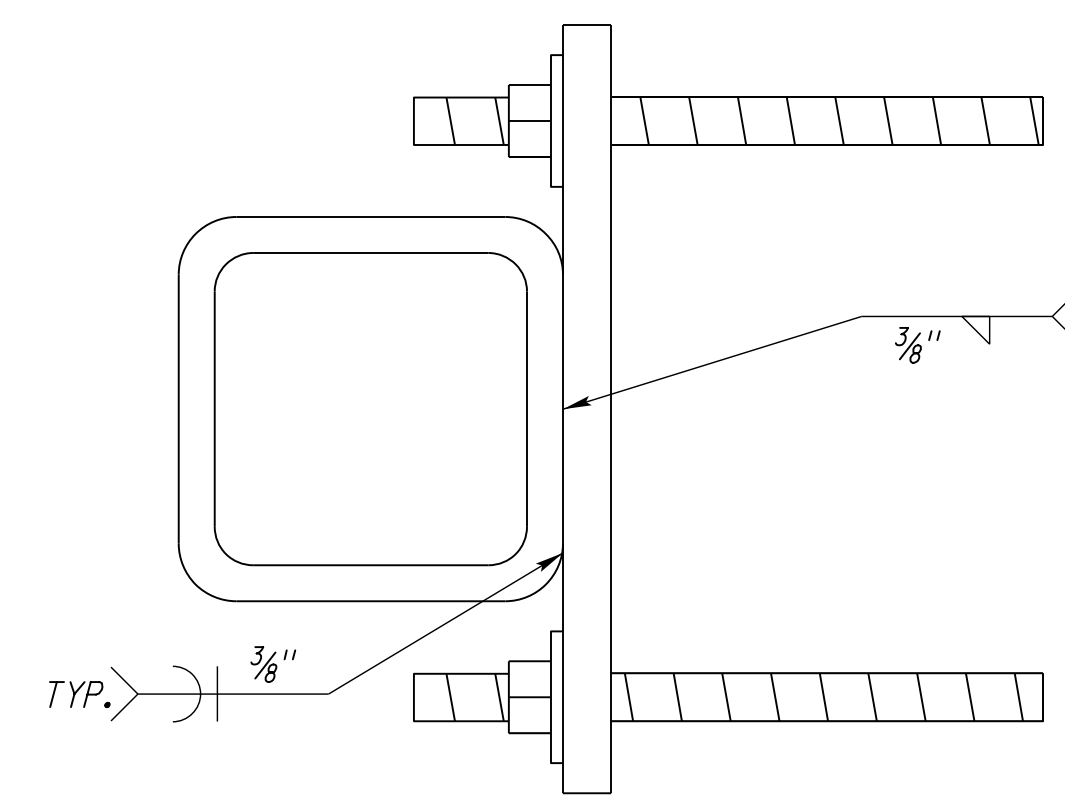
BOTTOM MOUNTING PLATE

PL 8" x 3" x 1/2"

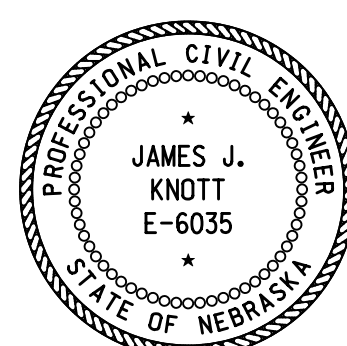


SIDE VIEW

ISOMETRIC VIEW



SECTION A-A

REV. NO.	DATE	DESCRIPTION OF REVISION
NEBRASKA DEPARTMENT OF ROADS STANDARD PLAN NO. 7470 PARAPET GUARDRAIL ATTACHMENT		
ACCEPTED BY FHWA FOR USE ON THE NATIONAL HIGHWAY SYSTEM:		<div style="display: flex; justify-content: space-between;"> <div style="text-align: center;">  <p>ORIGINAL: MMM DD, YYYY DATE</p> </div> <div style="text-align: center;"> <p>MMMM DD, YYYY DATE</p> </div> </div>