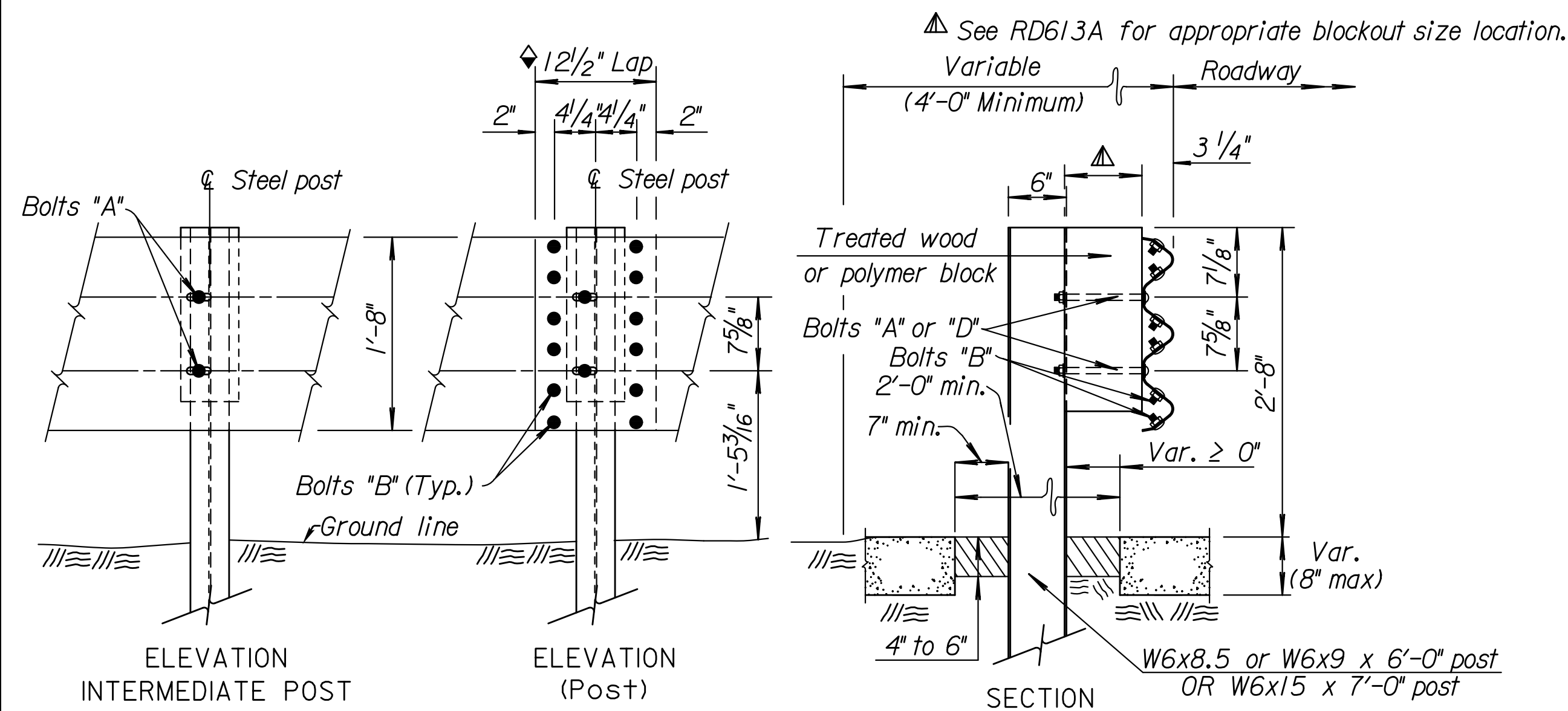
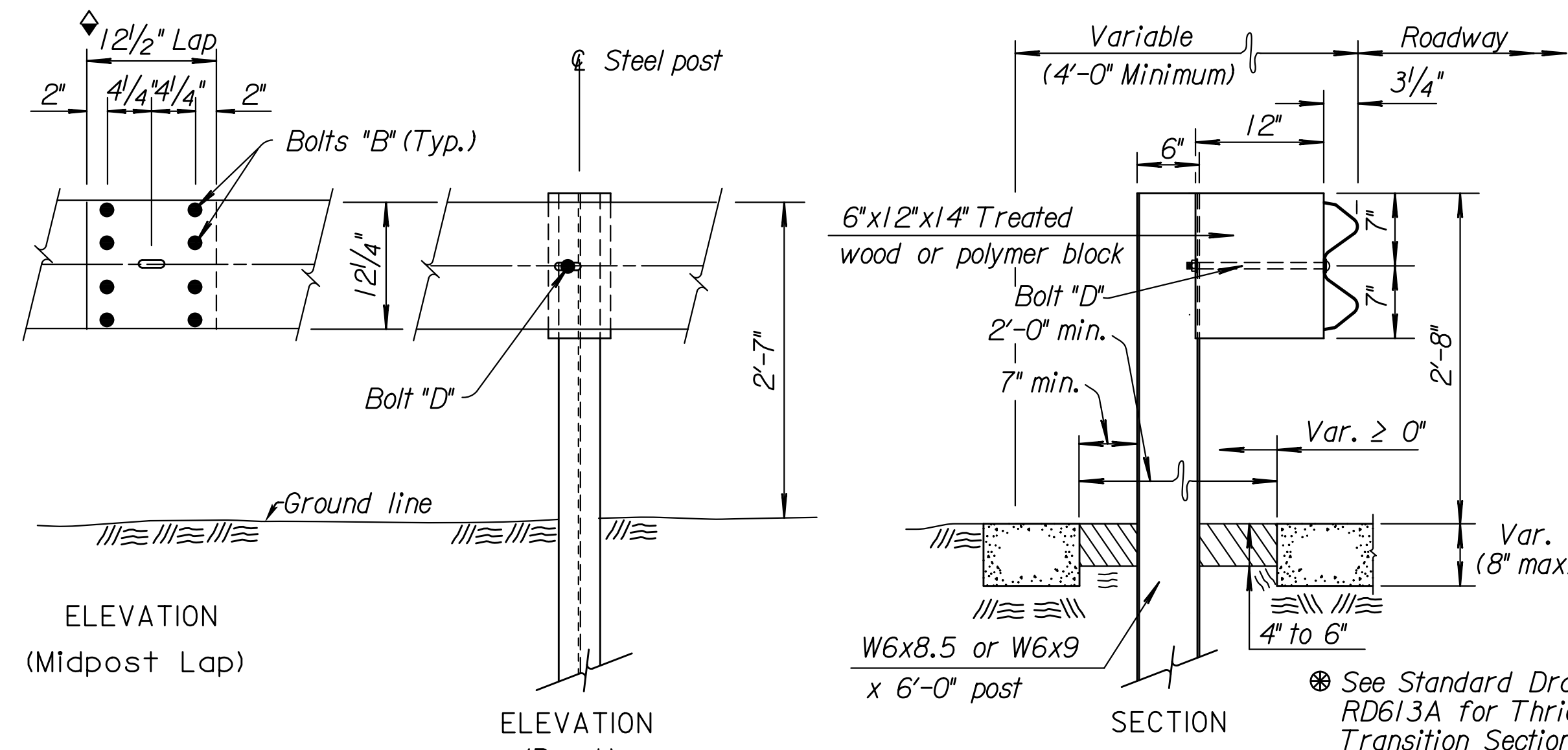


| | | | | |
|--------|-------------|------|-----------|--------------|
| STATE | PROJECT NO. | YEAR | SHEET NO. | TOTAL SHEETS |
| KANSAS | | | | |

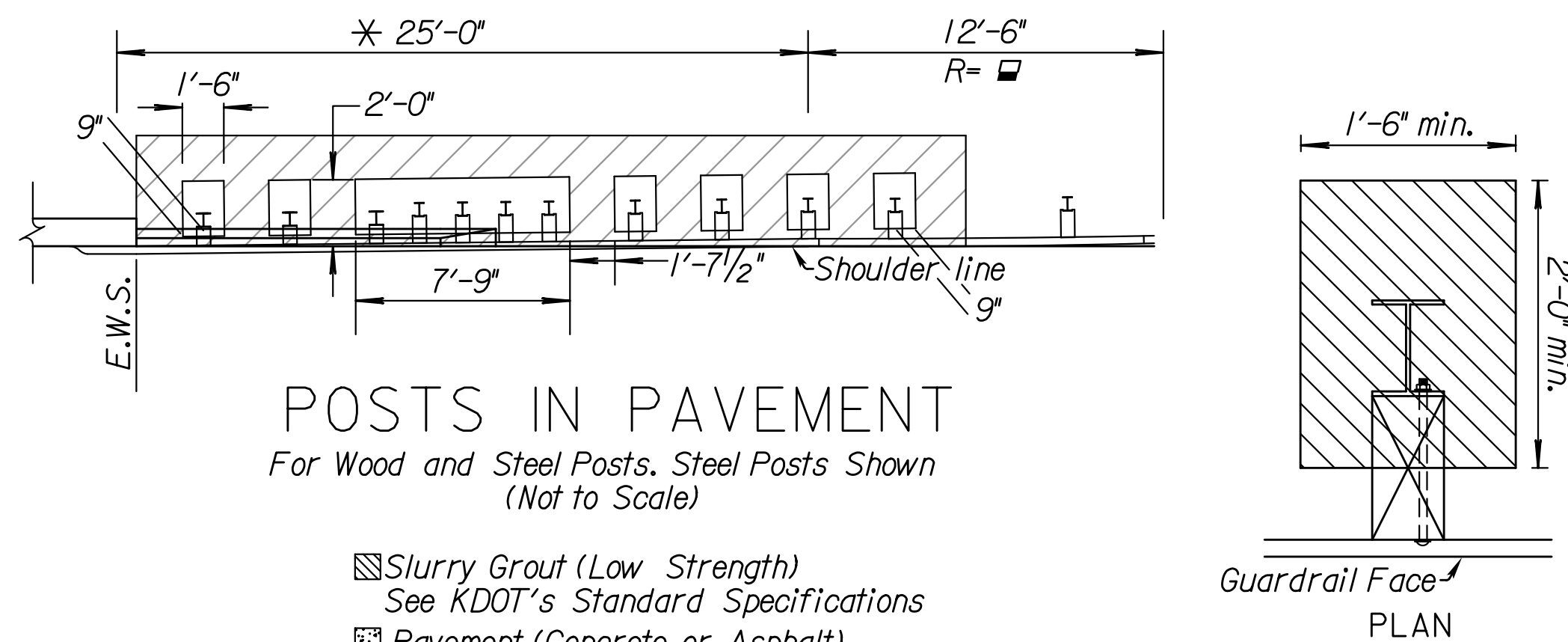
◆ Lap guardrail splices, including terminal connector, in the direction of traffic. Where traffic is temporarily carried in the opposite direction of final configuration, lap rail splices in the direction of permanent traffic.



THRIE BEAM POST DETAILS/POSTS IN PAVEMENT



W-BEAM (MGS) POST DETAILS/POSTS IN PAVEMENT

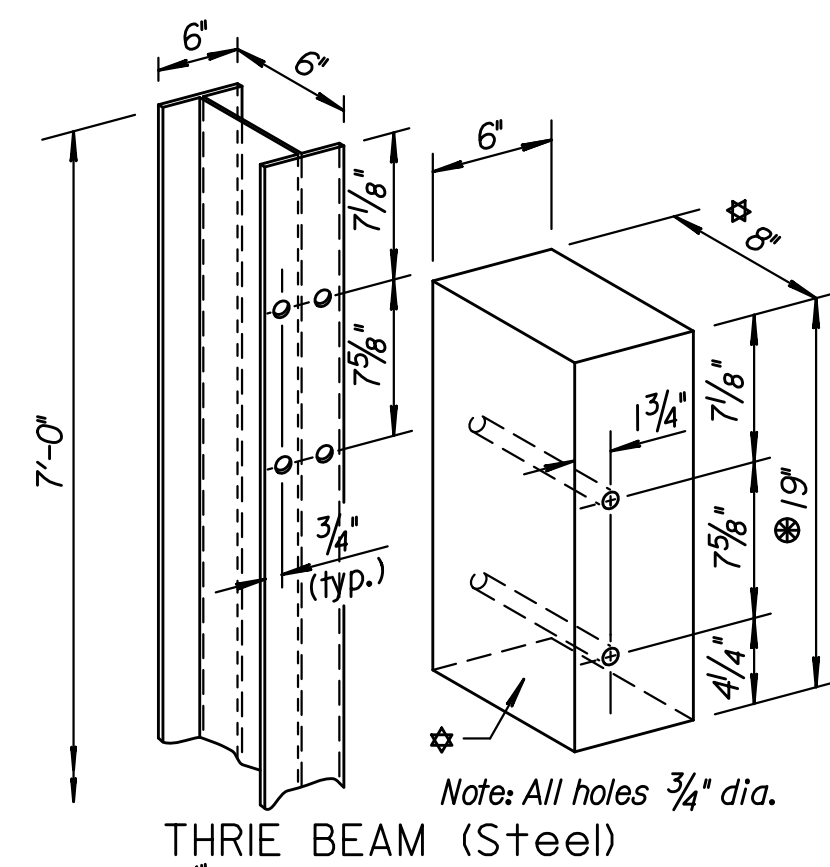


POSTS IN PAVEMENT
For Wood and Steel Posts. Steel Posts Shown
(Not to Scale)

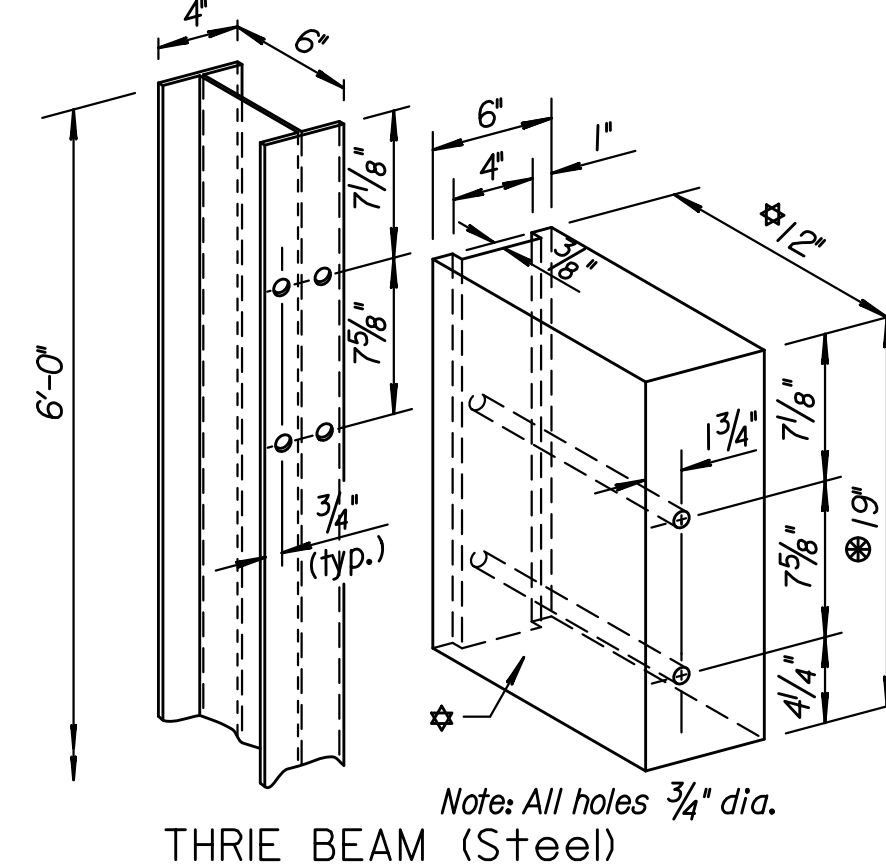
Slurry Grout (Low Strength)
See KDOT's Standard Specifications
Pavement (Concrete or Asphalt)

Note: Low Strength Grout must have a 28-day compressive strength of 120 psi or less. All work and materials related to posts in pavement are subsidiary to other guardrail bid items.

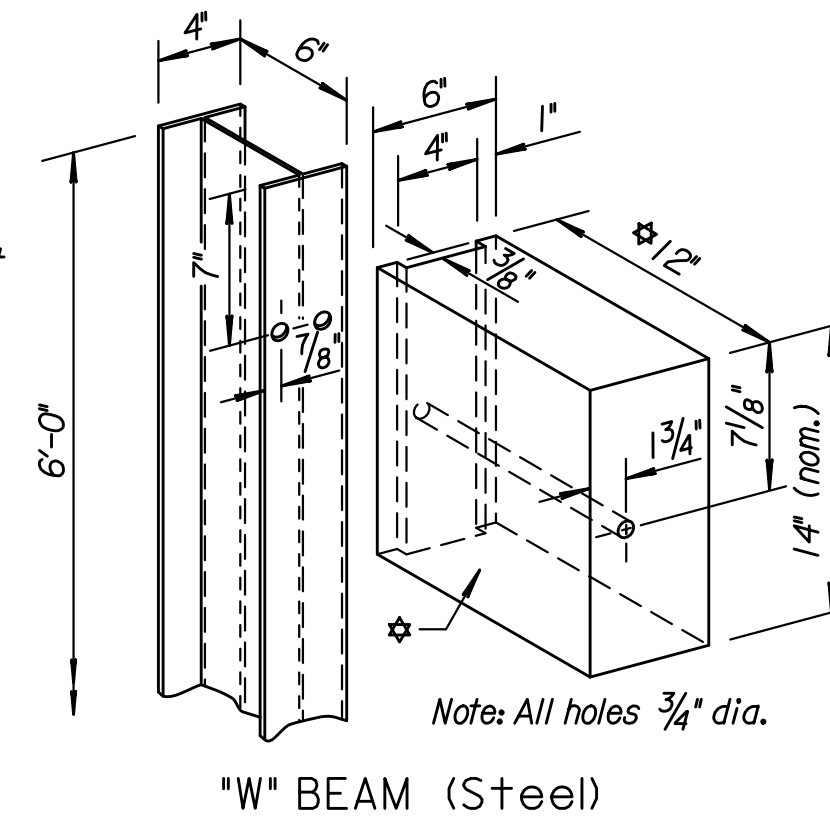
▲ See RD613A for appropriate blockout size location.



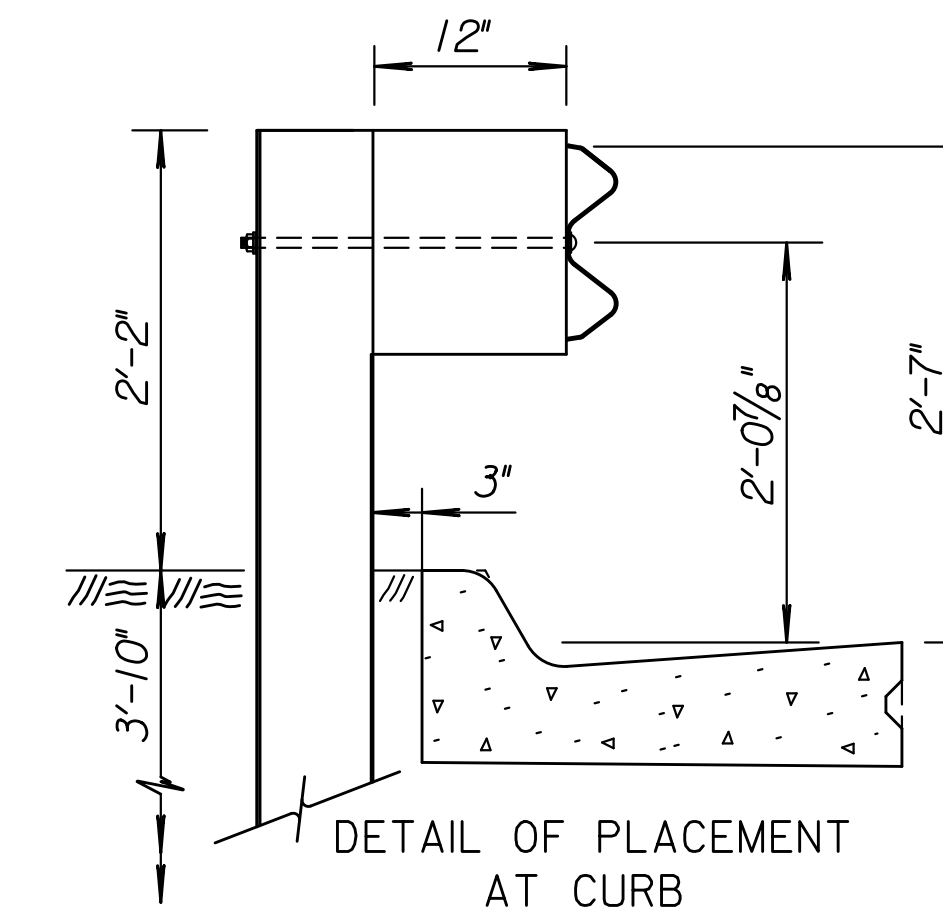
THRIE BEAM (Steel)



THRIE BEAM (Steel)

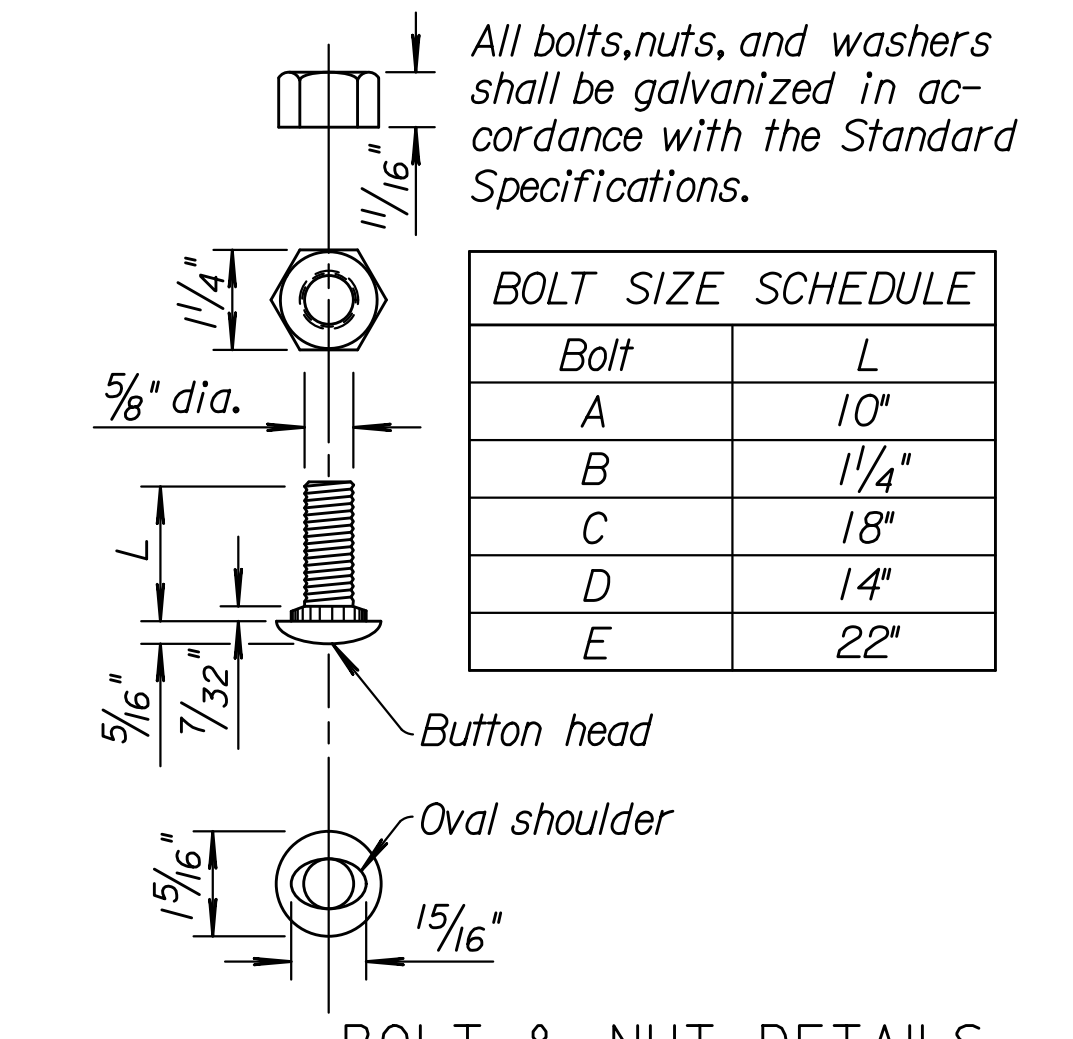


W BEAM (Steel)



DETAIL OF PLACEMENT AT CURB

Note: Measure height of rail from the pavement surface at the curb/pavement joint as shown. A special design is needed when guardrail is not located as detailed. A Type II (laydown) curb & gutter is preferred when guardrail is adjacent to curb.



BOLT & NUT DETAILS

| BOLT SIZE SCHEDULE | |
|--------------------|--------|
| Bolt | L |
| A | 10" |
| B | 1 1/4" |
| C | 18" |
| D | 14" |
| E | 22" |

GENERAL NOTES (Steel Posts)
Use grade of steel for steel posts that meets the requirements of the standard specifications.
Hot dip galvanize the posts after fabrication, see standard specifications.
Wood blockouts may be used through the 25'-0" thrie-beam section with wood or polymer blockouts used throughout the remainder of the w-beam installation. The blockout size and material used in the guardrail end terminal may be independent from the remainder of the installation. For wood/polymer blockout requirements see standard specifications.
Use S4S rectangular blockouts for Thrie-Beam/W-Beam installation.
Set guardrail posts by digging or by driving. Use post caps to protect the post from crushing during driving operations.
Contractor must notify Engineer at the earliest time when a non-removable manmade object (footing, pipe, etc.) is encountered that prevents installation of a full length post.
All dimensions are nominal and are subject to manufacturing tolerances. Excavation including rock, shale, and other materials for erection of Guardrail is subsidiary to various bid items for which payment is made.

See Standard Drawing RD613A for Thrie-Beam Transition Section Blockout hole pattern.
Non-Metallic (Polymer) or Treated Wood Block

Notes to Designer: For posts installed in pavement thicker than 8" or posts installed in rock formations refer to AASHTO's Roadside Design Guide for details then revise this drawing and all supporting drawings appropriately.
Plotted: 29-SEP-2015 15:56
Drawn By: tthreads
File: rd611a.dgn

| NO. | DATE | REVISIONS | BY | J.O.B. |
|-----|---------|-----------------------------------|--------|--------|
| 5 | 9-24-15 | Separated Steel/Wood Post Details | T.T.R. | S.W.K. |
| 4 | 11-8-12 | Revised Detail, Posts In Pavement | S.W.K. | J.O.B. |
| 3 | 8-1-12 | Revised Note to Designer | S.W.K. | J.O.B. |
| 2 | 5-24-12 | Revised Detail, Posts In Pavement | S.W.K. | J.O.B. |

KANSAS DEPARTMENT OF TRANSPORTATION

GUARDRAIL POST (STEEL) (MGS) DETAILS

RD611A

| | | | |
|---------------|------------------------|-----------|----------------|
| FHWA APPROVAL | APP'D. James O. Brewer | | |
| DESIGNED | QUANTITIES | TRACED | Bowser |
| DESIGN CK. | DETAIL CK. | QUAN. CK. | TRACE CK. King |

KDOT Graphics Certified 09-29-2015