

ELEVATION OF FENCE

CHAIN LINK FENCE NOTES:

THE CHAIN LINK FENCE IS TO BE BID ON A LINEAR FOOT BASIS MEASURED FROM ϕ TO ϕ OF END POSTS. THE PRICE BID FOR "FENCE, CHAIN LINK, VINYL COATED" SHALL BE FULL COMPENSATION FOR FURNISHING ALL MATERIAL, INCLUDING CONCRETE ANCHORS AND SHIMS, AND ALL OF THE EQUIPMENT AND LABOR REQUIRED TO ERECT THE FENCE IN ACCORDANCE WITH THESE PLANS AND SPECIFICATIONS.

THE STUD CONCRETE ANCHORS SHALL BE GALVANIZED AND HAVE A MINIMUM PULLOUT STRENGTH OF 8000 POUNDS BASED ON 4000 PSI CONCRETE. CONCRETE ANCHORS SHALL BE PROVIDED IN ACCORDANCE WITH IOWA D.O.T. MATERIALS I.M. 453.09.

THE MATERIAL FOR POSTS, BRACES AND RAILS SHALL BE STEEL PIPE IN ACCORDANCE WITH ARTICLE 4154.10, A, OF THE STANDARDS SPECIFICATIONS. BASE PLATES AND SHIMS SHALL MEET THE REQUIREMENTS OF ASTM A36. POSTS AND BASE PLATES SHALL BE GALVANIZED, AFTER FABRICATION, IN ACCORDANCE WITH THE REQUIREMENTS OF ASTM A123. SPECIAL FITTINGS SHALL BE IN ACCORDANCE WITH ARTICLE 4154.11, OF THE STANDARD SPECIFICATIONS, UNLESS OTHERWISE NOTED.

THE FENCE SHALL BE TRUE TO LINE, TAUT, AND COMPLY WITH THE BEST PRACTICE FOR FENCE CONSTRUCTION OF THIS TYPE. ALL ENDS OF WIRES SHALL BE TURNED SO THAT THEY EXTEND AWAY FROM THE SIDEWALK SIDE OF THE FENCE.

THE CHAIN LINK FABRIC SHALL BE EITHER ZINC OR ALUMINUM COATED FABRIC, 1-1/4" (1.25 INCH) MESH, NO. 9 WIRES, WITH KNUCKLED SELVAGES TOP AND BOTTOM.

CHAIN LINK FABRIC, RAILS, AND FENCE ACCESSORIES ARE TO BE PVC COATED IN ACCORDANCE WITH ASTM F 668, CLASS 2B. COLOR SHALL BE BLACK IN ACCORDANCE WITH ASTM F 934. THE COST OF PVC COATING IS TO BE INCLUDED IN THE PRICE BID FOR "FENCE, CHAIN LINK, VINYL COATED".

STEEL FENCE POST ASSEMBLIES SHALL BE ABRASIVE BLAST CLEANED TO A MINIMUM OF SSPC-SP6 "COMMERCIAL BLAST CLEANING" PRIOR TO HOT-DIP GALVANIZING. GALVANIZE COMPONENTS IN ACCORDANCE WITH ASTM A 123. DO NOT QUENCH OR APPLY CHROMATE CONVERSION COATINGS TO ANY GALVANIZED COMPONENTS THAT WILL RECEIVE POWDER COATING. FOLLOWING GALVANIZING, POWDER COAT COMPONENTS IN ACCORDANCE WITH MATERIALS I.M. 568.

PREPARATION OF GALVANIZED SURFACES FOR PAINT SHALL BE IN ACCORDANCE WITH MATERIALS I.M. 568, APPENDIX F. COMPLETE "PAINT OVER GALVANIZED SURFACE TRAVEL LOG" IN APPENDIX E.

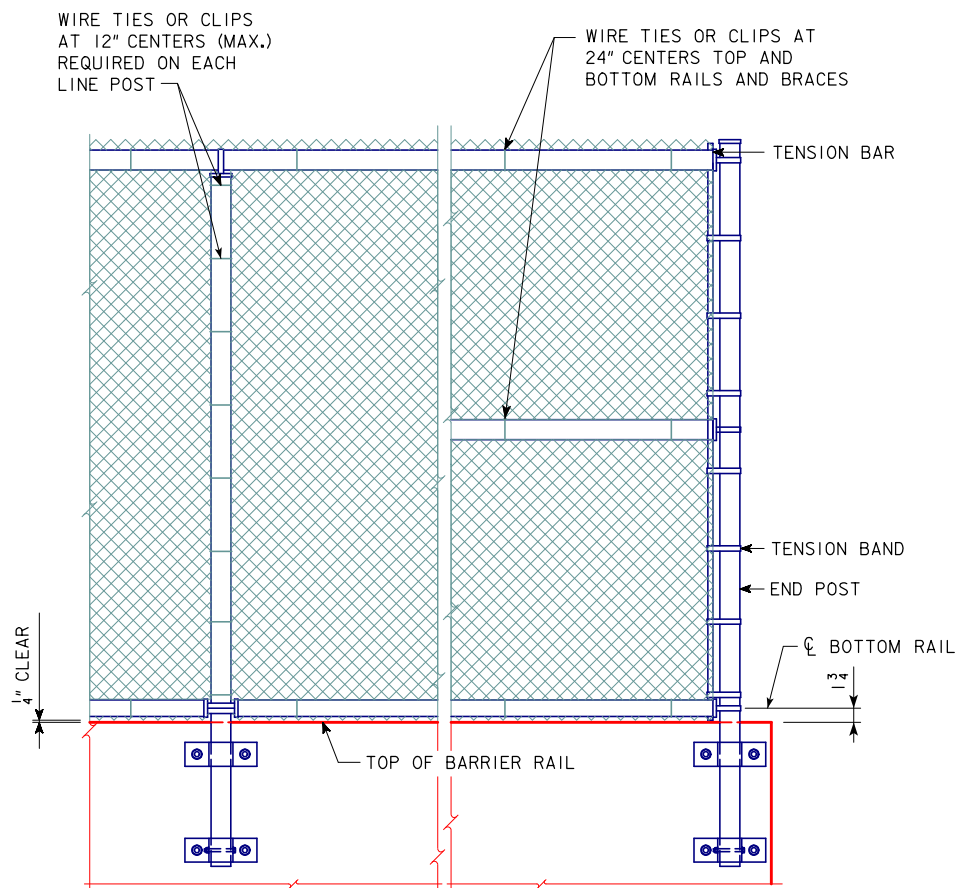
ALL POWDER COATING EXCEPT FIELD TOUCH-UP SHALL BE PERFORMED IN AN APPROVED SHOP IN ACCORDANCE WITH MATERIALS I.M. 568.

SUBMIT PROPOSED PREPARATION METHODS AND PRODUCT DATA FOR ALL COATINGS PROPOSED FOR USE TO THE ENGINEER FOR REVIEW AND APPROVAL PRIOR TO POWDER COATING. POWDER COATING SHALL MATCH FEDERAL STANDARD NO. 595C COLOR NUMBER 27038 (BLACK).

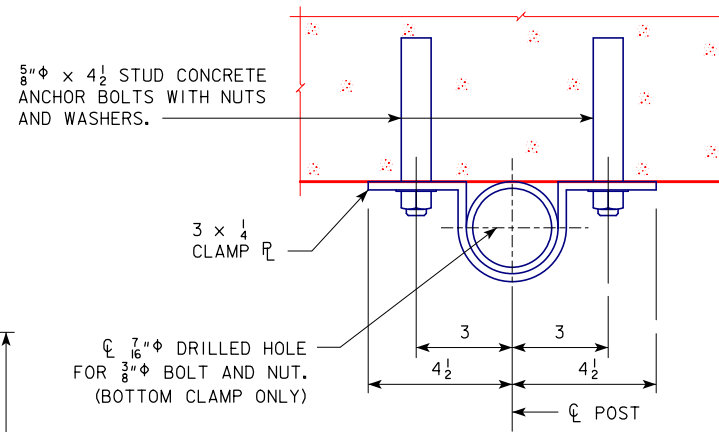
IF AVAILABLE, VINYL COATED FENCE POST ASSEMBLIES MAY BE SUBSTITUTED FOR POWDER COATED COMPONENTS PROVIDED THE MATERIAL IS IN COMPLIANCE WITH ALL OTHER REQUIREMENTS LISTED IN THESE PLANS AND THE STANDARD SPECIFICATIONS. PVC COATING SHALL COMPLY WITH ASTM F 668, CLASS 2B AND SHALL BE BLACK IN ACCORDANCE WITH ASTM F 934. THE COST OF PVC COATED FENCE POST ASSEMBLIES SHALL BE INCLUDED IN THE PRICE BID FOR "FENCE, CHAIN LINK, VINYL COATED".

PROTECT ALL POWDER COATED RAILING SURFACES FROM DAMAGE DURING SHIPPING, HANDLING, AND INSTALLATION.

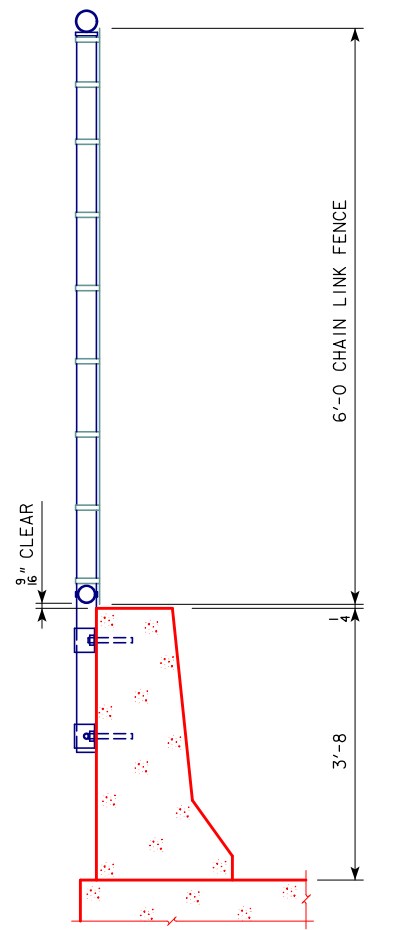
FOLLOWING FENCE INSTALLATION, REPAIR ANY DAMAGE TO THE POWDER COATED FINISH IN ACCORDANCE WITH THE COATING MANUFACTURER'S RECOMMENDATIONS. ALL COSTS ASSOCIATED WITH POWDER COATING SHALL BE CONSIDERED INCIDENTAL TO THE BID ITEM, "FENCE, CHAIN LINK, VINYL COATED".



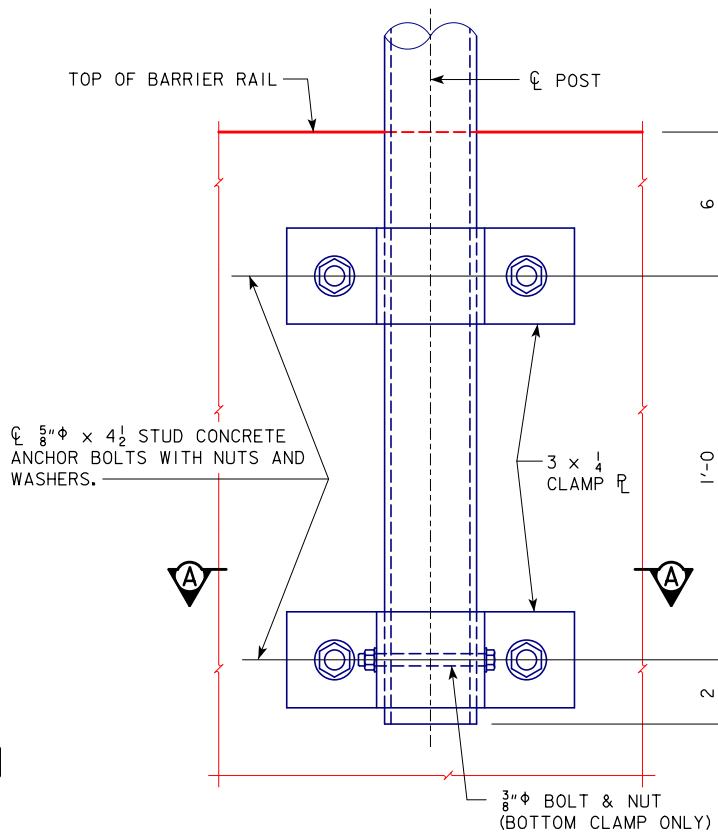
FENCE DETAILS



SECTION A-A



TYPICAL SECTION



PART ELEVATION

QUANTITIES		
ITEM	UNITS	AMOUNT
FENCE, CHAIN LINK, VINYL COATED	LIN. FT.	110

DESIGN FOR 42° SKEW (L.A.)
115'-0 x 72' PRETENSIONED PRESTRESSED CONCRETE BEAM BRIDGE
 115'-0 SPAN
EAST BARRIER RAIL FENCING
 STATION: 75+90.95 (US 63) APRIL, 2017
BLACK HAWK COUNTY
 IOWA DEPARTMENT OF TRANSPORTATION - HIGHWAY DIVISION
 DESIGN SHEET NO. 20 OF 23 FILE NO. 30930 DESIGN NO. 915