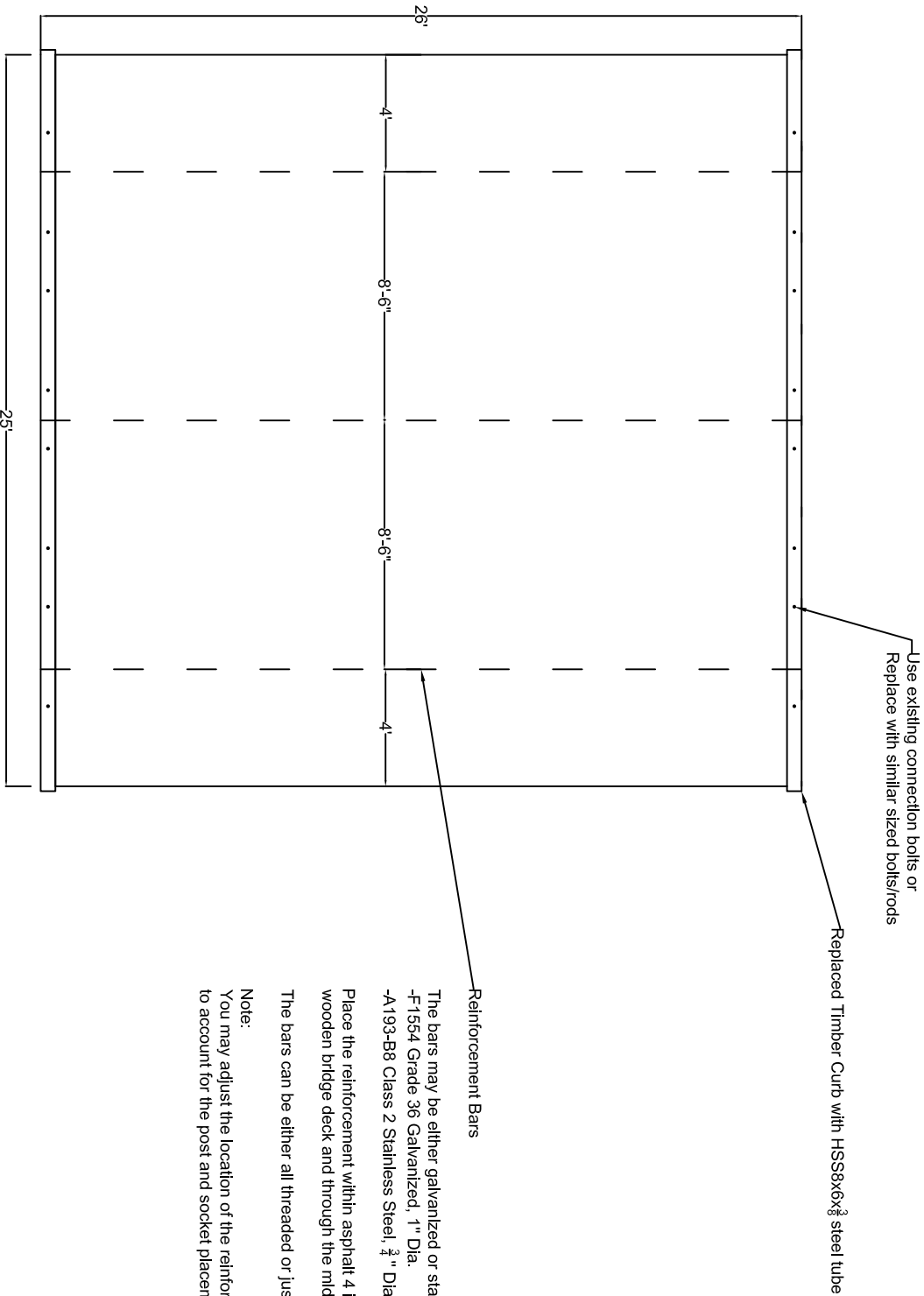
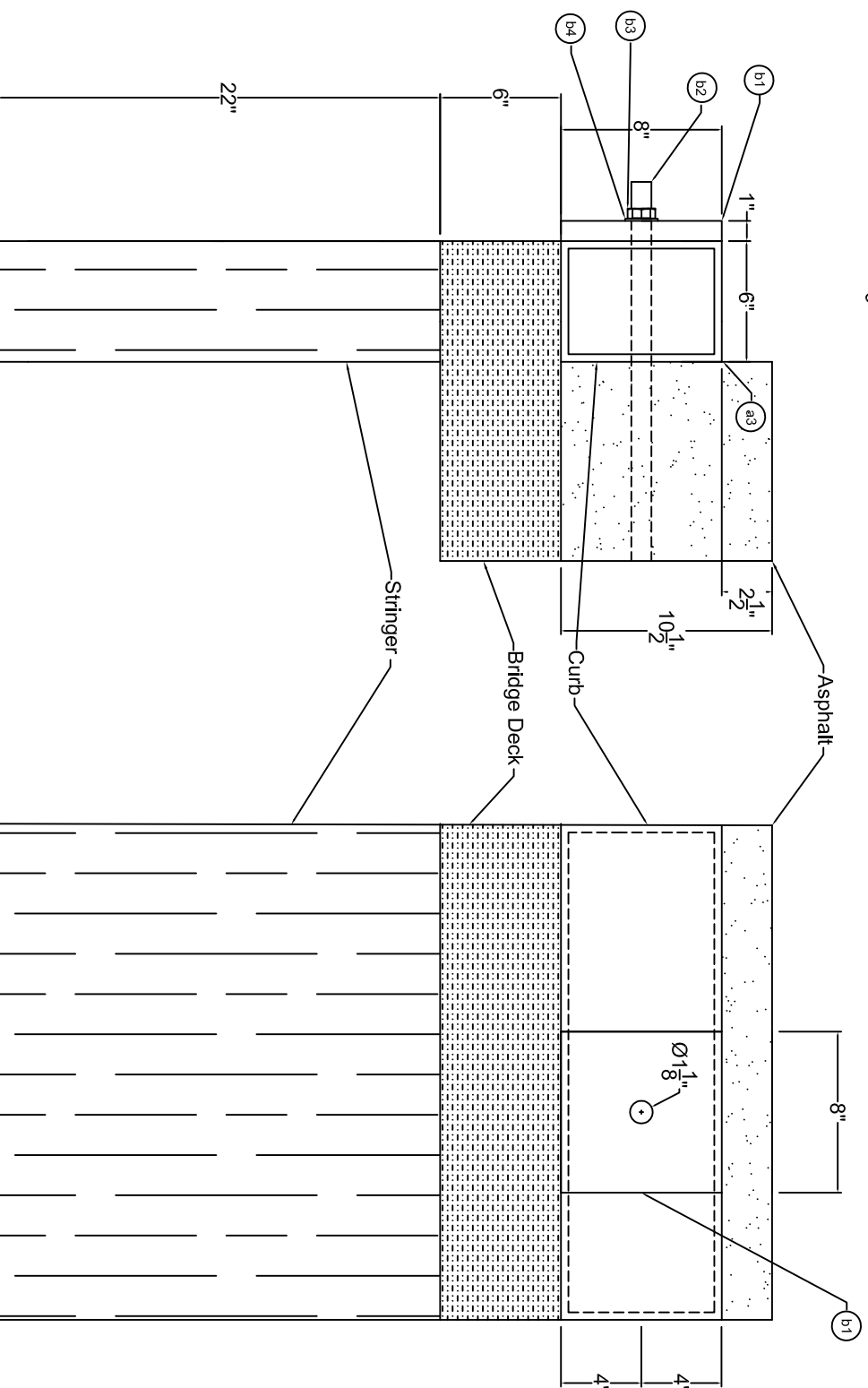
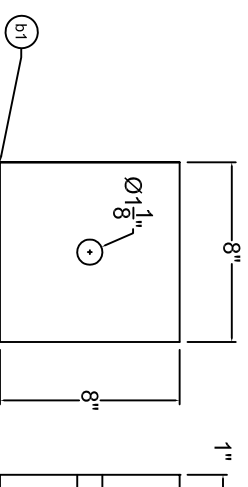
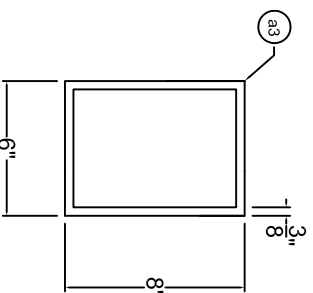


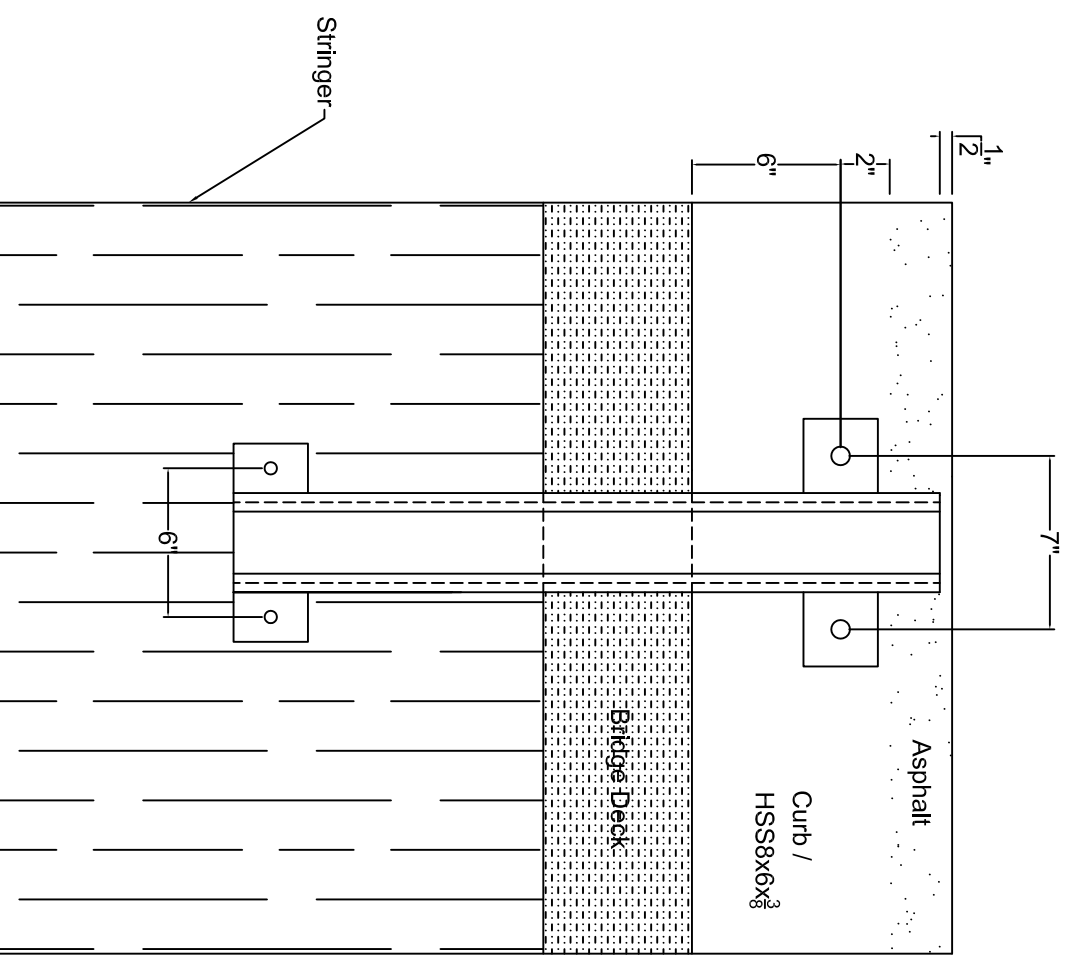
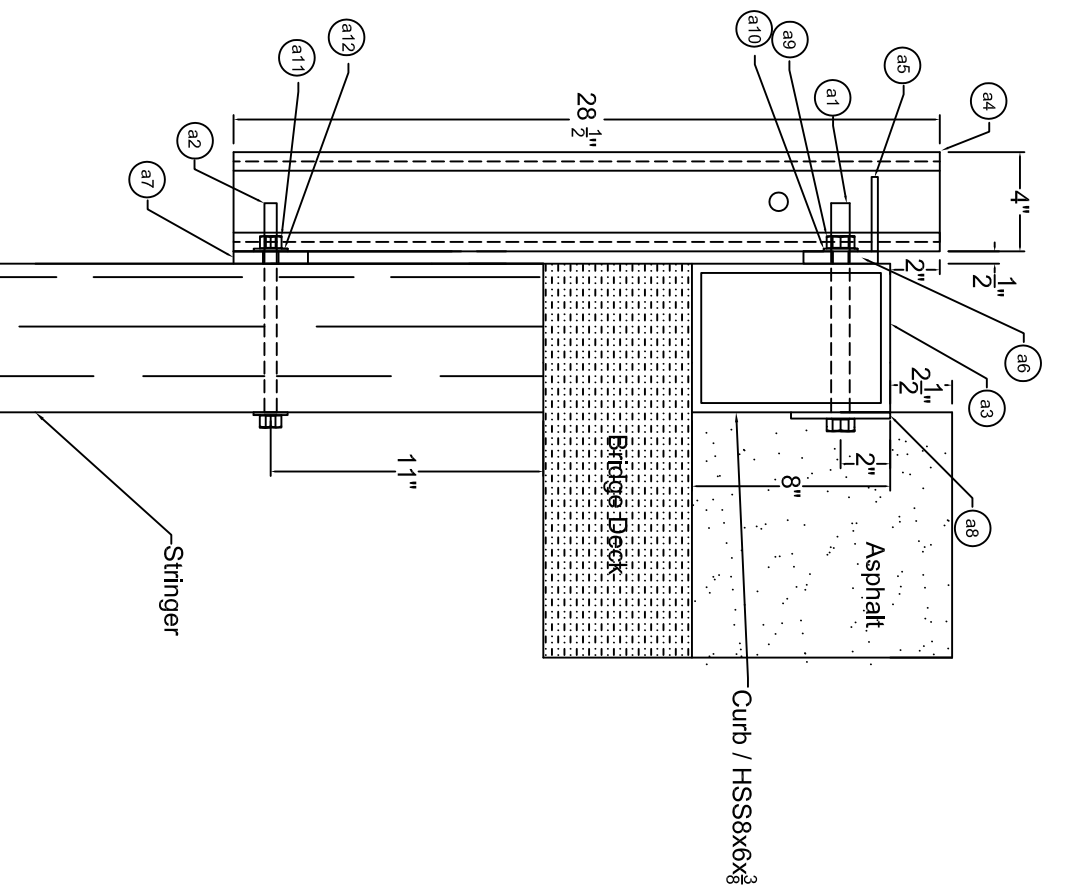
Curb Replacement and Anchorage



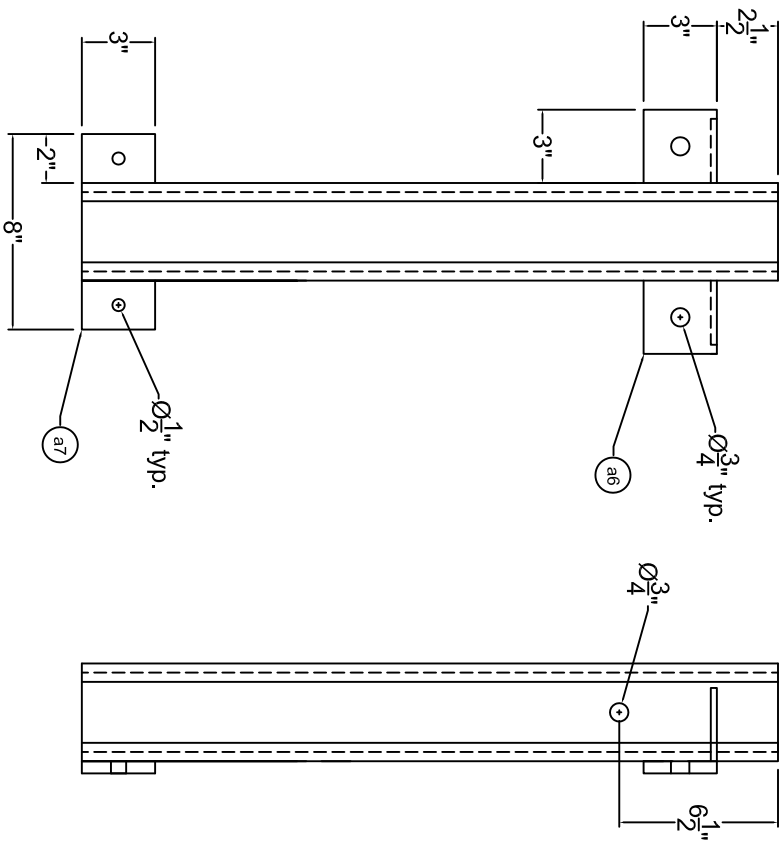
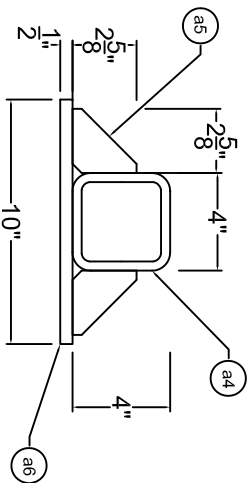
Curb and Anchor Rods



Socket Assembly and Attachment



Socket Assembly



Note:

a5 is the same as part b4 in culvert drawings

a6 is the same as part b3 in culvert drawings

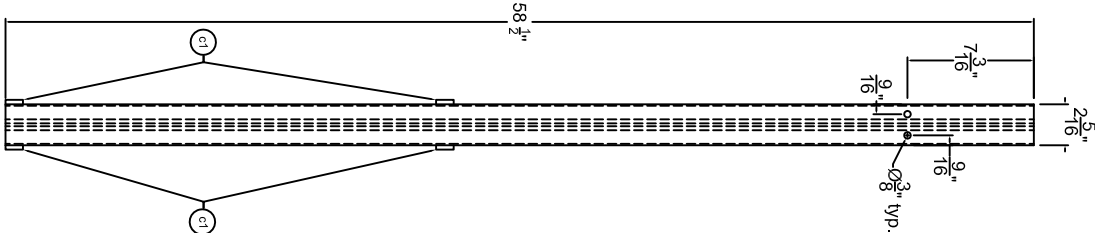
a7 is the same as part b2 in culvert drawings

All welds are the same as in the culvert drawings

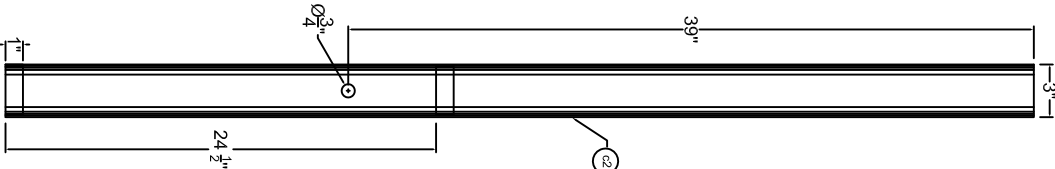
Post Assembly



Plan View



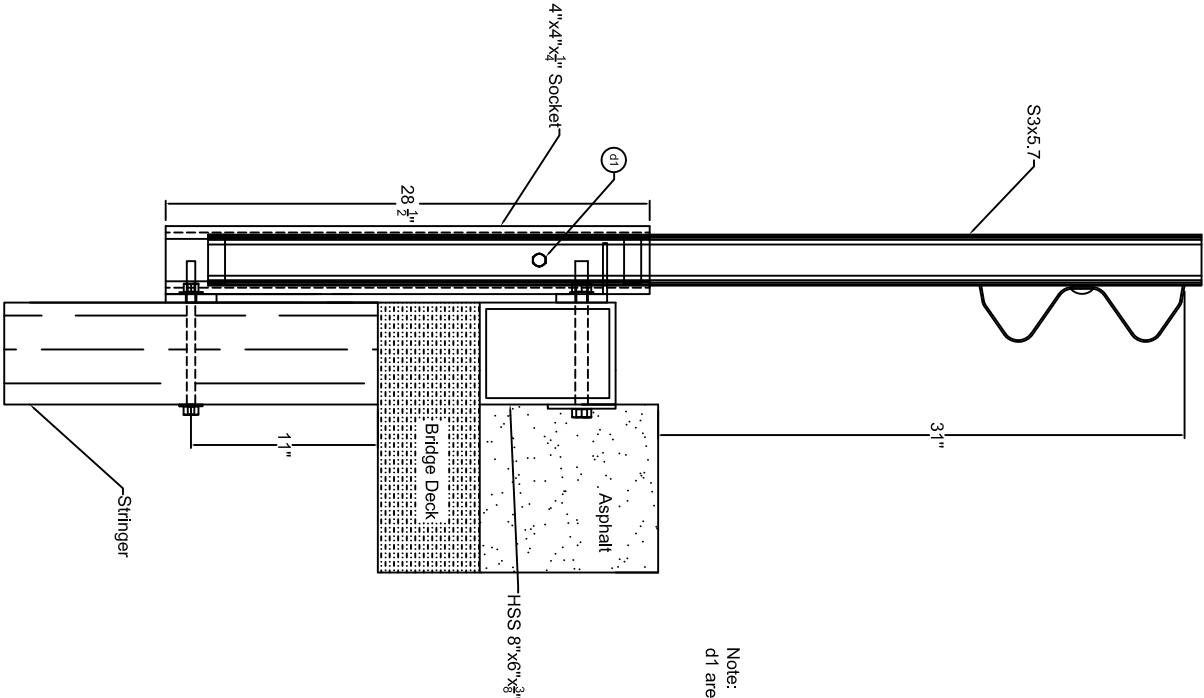
Elevation View



Profile View

Note:
c1 is the same as part c2 in culvert drawings

System Assembly



Note:
d1 are the same parts as e3 in culvert drawings

Item No.	Description	Material Specification
a1	3/4" Dia. UNC, 8 in. Long Bolt/Threaded Rod	ASTM 307 Grade C Galvanized/ASTM F1554 Grade 36 Galvanized/SAE J429 Grade 2 Galvanized
a2	1/2" Dia. UNC, 8 in. Long Bolt/Threaded Rod	ASTM 307 Grade C Galvanized/ASTM F1554 Grade 36 Galvanized/SAE J429 Grade 2 Galvanized
a3	HSS 8"x6"x3/8" Steel Tubing	ASTM A500 Grade B Steel Galvanized
a4	4"x4"x3/8" Square Socket	ASTM A500 Grade B Steel Galvanized
a5	3"x3"x1/4" Top Plate Gusset	ASTM 572 Grade 50 Steel Galvanized
a6	10"x3"x1/2" Top Mounting Plate	ASTM 572 Grade 50 Steel Galvanized
a7	8"x3"x1/2" Bottom Mounting Plate	ASTM 572 Grade 50 Steel Galvanized
a8	4"x4"x1/4" Top Anchor Plate Washer	ASTM 572 Grade 50 Steel Galvanized
a9	3/4" Dia. UNC Heavy Hex Nut	ASTM A563A Galvanized
a10	3/4" Dia. Hardened Round Narrow Washer	ASTM F436 Galvanized
a11	1/2" Dia. UNC Heavy Hex Nut	ASTM A563A Galvanized
a12	1/2" Dia. Hardened Round Washer	ASTM F436 Galvanized
b1	8"x8"x1" steel plate	ASTM A529 Grade 50
b2	1" Dia. Rod	1" F1554 Grade 36 Galvanized
b3	1" Dia. UNC Heavy Hex Nut	ASTM A563A Galvanized
b4	1" Dia. Hardened Round Washer	ASTM F436 Galvanized
c1	2 3/4"x1"x1/4" Post Standoff	ASTM A36 Steel Galvanized
c2	S3x5.7 by 58 1/2" Long Steel Post	ASTM A36 Steel Galvanized
d1	5/8" Dia. UNC, 5" Long Heavy Hex Bolt and Nut	Bolt ASTM A325 Type 1 Galvanized Nut ASTM A563A Galvanized

Option 2 for Anchor Rod		
b2-A	3/4" Dia., 28' Long Rod	3/4" A193-B8 Class 2 Stainless Steel
b4-A	3/4" Dia. Heavy Hex Nut	ASTM A194 Grade 8 Stainless Steel
b6-A	3/4" Dia. Hardened Round Washer	SS316 Stainless Steel