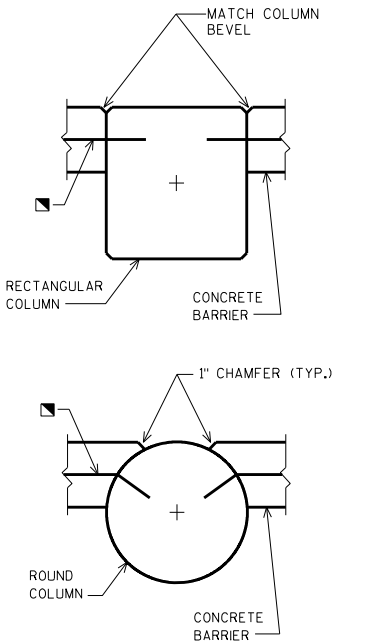


SEE STANDARD 13.11 FOR ADDITIONAL DETAILS.



DETAIL A
F.F. OF BARRIER IS FLUSH WITH FACE OF COLUMN

ULTIMATE DESIGN STRESSES:

CONCRETE MASONRY	_____	$f'_c = 4,000$ P.S.I.
HIGH-STRENGTH BAR STEEL		
REINFORCEMENT, GRADE 60	_____	$f_y = 60,000$ P.S.I.

ELEVATION
LOOKING AT B.F. OF BARRIER

NOTE: 51- INCH BARRIER REFERS TO THE DISTANCE FROM THE TOP OF THE SHOULDER TO THE TOP OF THE BARRIER. THE DETAILS SHOWN ON STANDARDS 13.10 AND 13.11 ARE FOR VEHICLE PROTECTION.

☆ PLACE 1/2" FILLER BETWEEN COLUMN AND CONCRETE FOOTING (TYP.)

51-INCH CONCRETE INTEGRAL BARRIER

STATE OF WISCONSIN
DEPARTMENT OF TRANSPORTATION
STRUCTURES DEVELOPMENT SECTION

APPROVED: _____

DATE:
7-12