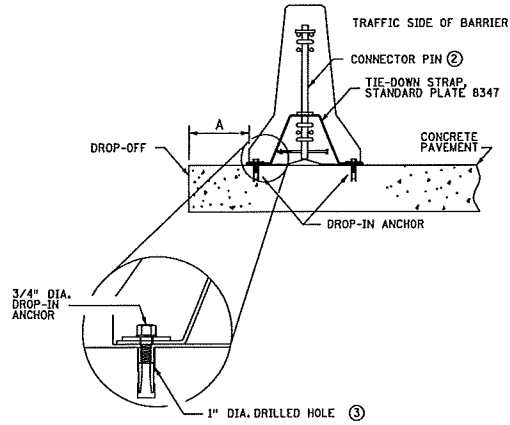
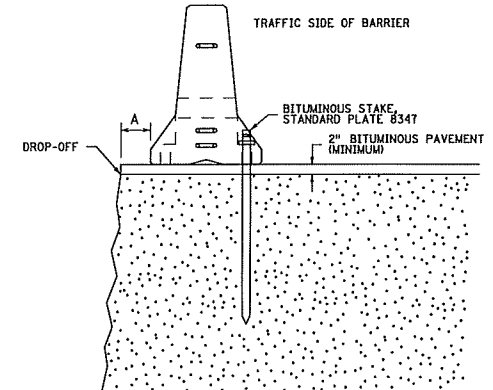


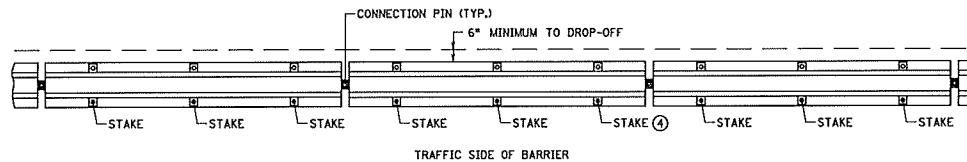
APPROACH PANEL BOLT-DOWN ANCHOR



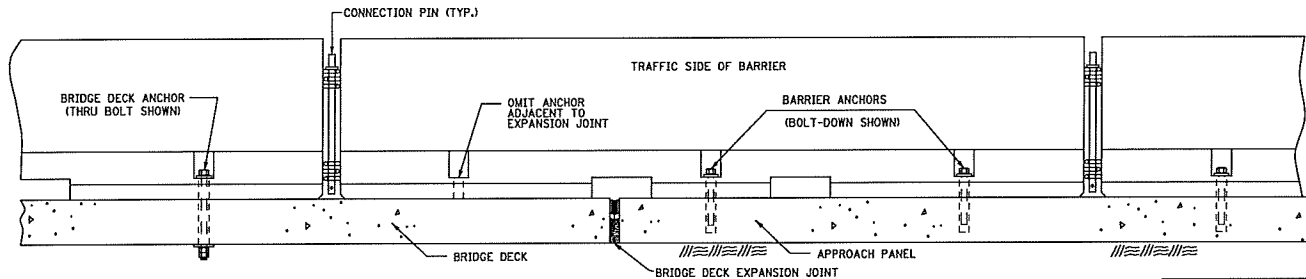
TIE-DOWN STRAP ANCHOR



BITUMINOUS ANCHORAGE



BITUMINOUS ANCHORAGE AT VERTICAL CUT



ANCHOR TREATMENT AT BRIDGE DECK EXPANSION JOINT ⑤
(EXPANSION LESS THAN 1-1/2")

PORTABLE CONCRETE BARRIER ANCHORAGES		
BARRIER OFFSET "A" ①	PAVEMENT TYPE	ANCHORAGE TYPE
1' ≤ A < 2'	CONCRETE	3 BOLT-DOWN ANCHORS ON TRAFFIC FACE ON APPROACH PANEL
6" ≤ A < 2'	CONCRETE	TIE-DOWN STRAP ANCHOR
6" MINIMUM	BITUMINOUS	3 BITUMINOUS STAKES ON TRAFFIC SIDE
A ≥ 2'	CONCRETE	NO ANCHORAGE REQUIRED

NOTES:

BARRIER SECTIONS SHALL NOT BE PERMANENTLY INCORPORATED INTO CONSTRUCTION OR MAINTENANCE PROJECTS.

ALL BARRIERS ARE DESIGN 8337. SEE STANDARD PLATE 8337.

BARRIERS SHALL HAVE CONNECTION PINS.

① OFFSET DISTANCE TO DROP-OFF.

② RETAINER BOLT AND NUT REQUIRED.

③ OR ANCHOR MANUFACTURER'S RECOMMENDED DIAMETER.

④ 3 STAKES REQUIRED PER BARRIER SECTION, PLACED ON TRAFFIC SIDE OF BARRIER, WHEN ADJACENT TO DROP-OFF.

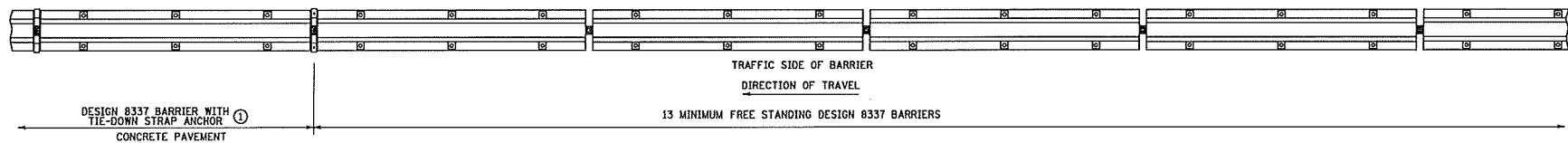
⑤ REFER TO MnDOT BRIDGE STANDARD DETAIL B920 FOR ANCHORING BARRIER ONTO BRIDGE.

STANDARD PLAN SHEET NO.
5-297.680 (1 OF 2)
STANDARD APPROVED
SEPTEMBER 14, 2012

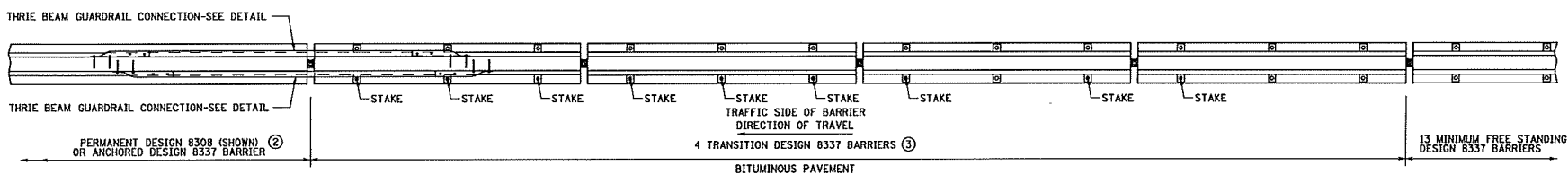
PORTABLE PRECAST CONCRETE BARRIER ANCHORING

STATE PROJ. NO.

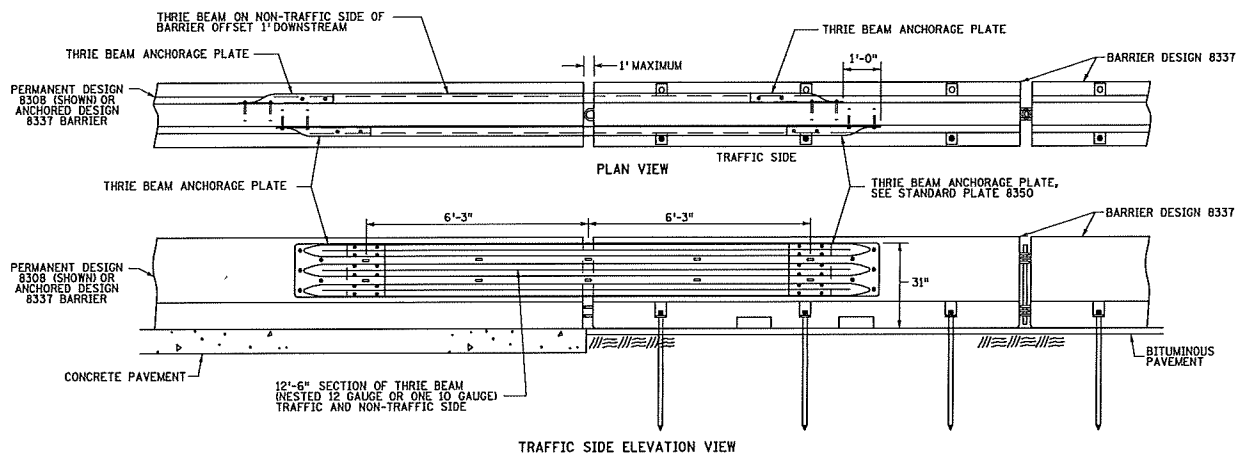
(TH) SHEET NO. OF SHEETS



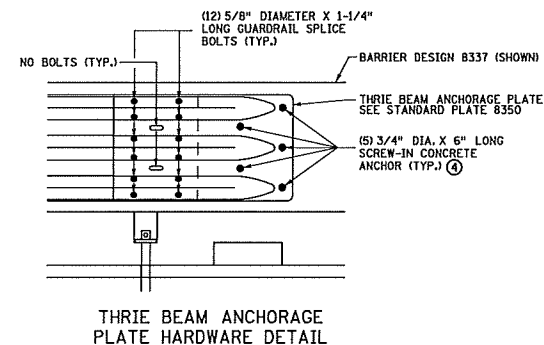
TRANSITION FROM FREE STANDING BARRIER TO TIE-DOWN STRAP ANCHORED BARRIER



TRANSITION FROM FREE STANDING BARRIER TO PERMANENT BARRIER OR ANCHORED PORTABLE BARRIER



THRIE BEAM GUARDRAIL CONNECTION DETAIL



THRIE BEAM ANCHORAGE PLATE HARDWARE DETAIL

- NOTES:
- BARRIER SECTIONS SHALL NOT BE PERMANENTLY INCORPORATED INTO CONSTRUCTION OR MAINTENANCE PROJECTS.
 - CONNECTION PINS REQUIRED WITH ALL DESIGN 8337 BARRIERS.
 - THRIE BEAM SHALL CONFORM TO AASHTO M 180.
 - ① WHEN FREE STANDING BARRIERS CONNECT TO TIE-DOWN STRAP ANCHORED BARRIERS, TRANSITION BARRIERS AND THRIE BEAM CONNECTION NOT REQUIRED.
 - ② THRIE BEAM GUARDRAIL CONNECTION REQUIRED BETWEEN TRANSITION BARRIERS AND PERMANENT OR RIGID BARRIERS.
 - ③ TRANSITION BARRIERS REQUIRED BETWEEN FREE STANDING DESIGN 8337 BARRIERS AND PERMANENT OR ANCHORED BARRIERS.
 - ④ REINFORCEMENT STEEL WITHIN BARRIER SHALL NOT BE DISTURBED WHEN ANCHORS ARE PLACED.

STANDARD PLAN SHEET NO. 5-297.680 (2 OF 2)	PORTABLE PRECAST CONCRETE BARRIER ANCHORING (TRANSITION SYSTEMS)
STANDARD APPROVED SEPTEMBER 14, 2012	
STATE PROJ. NO.	(TH) SHEET NO. OF SHEETS