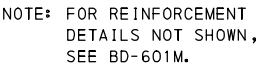


NOTE: EITHER ALL METRIC OR ALL ENGLISH VALUES
MUST BE USED ON PLANS. METRIC AND
ENGLISH VALUES SHOWN MAY NOT BE MIXED.

<p align="center">COMMONWEALTH OF PENNSYLVANIA DEPARTMENT OF TRANSPORTATION BUREAU OF DESIGN</p>			
<p align="center">STANDARD</p> <p align="center">PA HT BRIDGE BARRIER</p> <p align="center">DETAILS</p>			
<p>RECOMMENDED JULY 29, 2005</p> <p><i>HCR</i></p> <p>ACTING CHIEF BRIDGE ENG.</p>	<p>RECOMMENDED JULY 29, 2005</p> <p><i>Scott Christa</i></p> <p>DIR., BUREAU OF DESIGN</p>	<p>RECOMMENDED JULY 29, 2005</p> <p><i>M. LaPelle</i></p> <p>CHIEF ENG., HWY. ADMIN.</p>	<p>SHEET 1 OF 3</p> <p>BD-615M</p>



▲ WITHIN 3050 mm (10'-0") ON BOTH SIDES OF AN EXPANSION JOINT IN THE BARRIER AND AT THE END OF THE BRIDGE, REDUCE SPACING OF REINFORCEMENT BARS TO HALF THE SHOWN SPACING.



REINFORCEMENT DETAILS

REINFORCEMENT BAR NOTES

1. REINFORCEMENT BAR DIMENSIONS ARE OUT TO OUT OF BAR.
2. DIMENSIONS ALONG CURVED PORTIONS OF BAR ARE MEASURED ALONG THE OUTSIDE EDGE.

1. FOR NOTES, SEE SHEET 1.

NOTE: EITHER ALL METRIC OR ALL ENGLISH VALUES
MUST BE USED ON PLANS. METRIC AND
ENGLISH VALUES SHOWN MAY NOT BE MIXED.

STANDARD

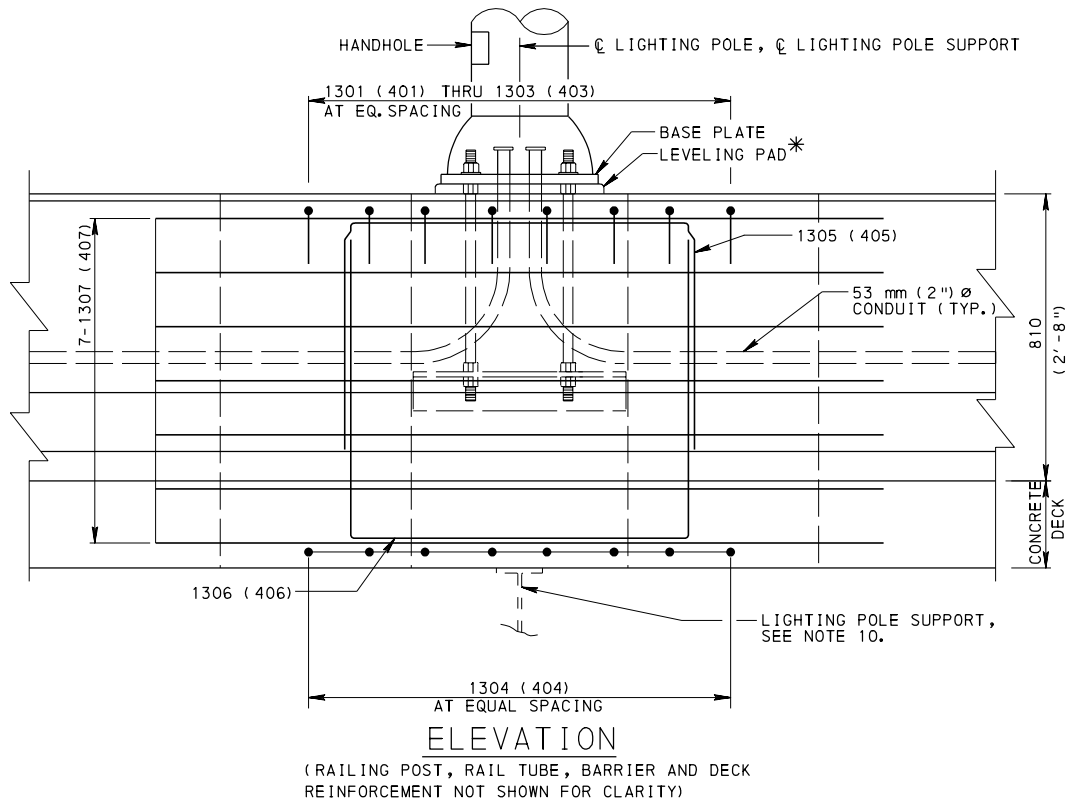
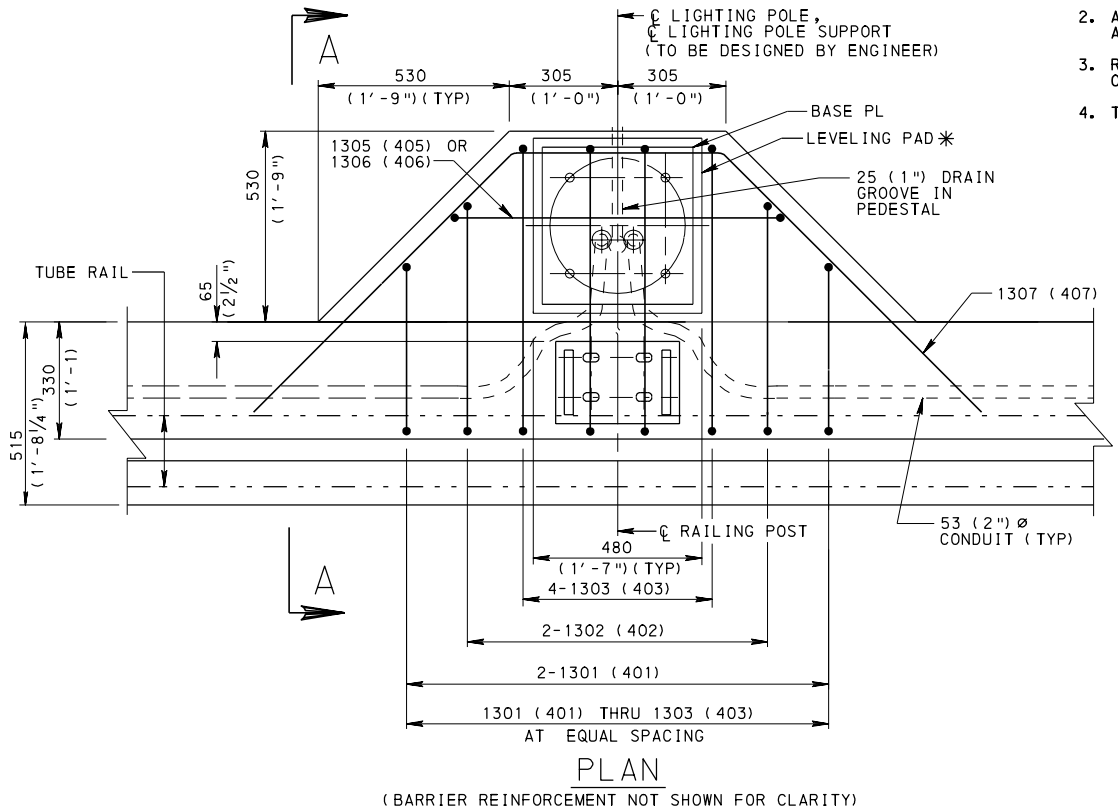
PA HT BRIDGE BARRIER
ALTERNATE SIDEWALK DETAILS

BD-601M	CONCRETE DECK SLAB	RECOMMENDED JULY 29, 2005	RECOMMENDED JULY 29, 2005	RECOMMENDED JULY 29, 2005	SHEET 2 OF 3
BC-707M	PA HT BRIDGE BARRIER MISC DETAILS	<i>#C Roger</i>	<i>Scott Christ</i>	<i>m. G. Patel</i>	
REFERENCE DRAWINGS		ACTING CHIEF BRIDGE ENG.	DIR., BUREAU OF DESIGN	CHIEF ENG., HWY. ADMIN.	BD-615M

REINFORCEMENT BAR NOTES

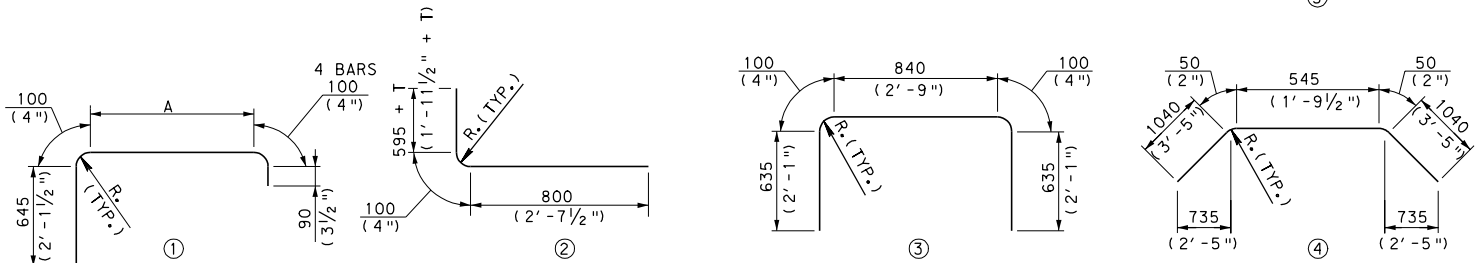
1. DIMENSIONS ALONG CURVED PORTIONS OF BAR ARE MEASURED ALONG THE OUTSIDE EDGE.
2. ALL REINFORCEMENT BARS SHALL BE EPOXY COATED IN ACCORDANCE WITH PUBLICATION 408, SECTION 709.
3. RADIUS, R=50 (2"), IS MEASURED TO THE INSIDE EDGE OF THE REINFORCEMENT BAR.
4. T = THICKNESS OF SLAB.

REINFORCEMENT BAR TABLE					
MARK	SIZE	LENGTH	NUMBER	TYPE	A
1301 (401)	#13 (#4)	1220 (4'-0")	2	1	230 (9")
1302 (402)	#13 (#4)	1395 (4'-7")	2	1	405 (1'-4")
1303 (403)	#13 (#4)	1575 (5'-2")	4	1	585 (1'-11")
1304 (404)	#13 (#4)	1495 + T (4'-11" + T)	8	2	-----
1305 (405)	#13 (#4)	2310 + T (7'-7" + T)	1	3	-----
1306 (406)	#13 (#4)	2210 + T (7'-3" + T)	1	5	-----
1307 (407)	#13 (#4)	2725 (8'-11½" + T)	7	4	-----



* FILL SPACE BETWEEN POLE BASE PLATE AND TOP OF CONCRETE BARRIER WITH GROUT AFTER SETTING POLE TRULY VERTICAL USING LEVELING NUTS. TOOL EDGES OF PAD. MINIMUM HEIGHT OF LEVELING PAD IS 25 mm (1").

PROVISIONS FOR FUTURE LIGHTING		
MOUNTING HEIGHT	ANCHOR BOLT CIRCLE DIA.	ANCHOR BOLT DIAMETER
15.2m (50'-0") MAX.	380 (15")	25.4 (1")

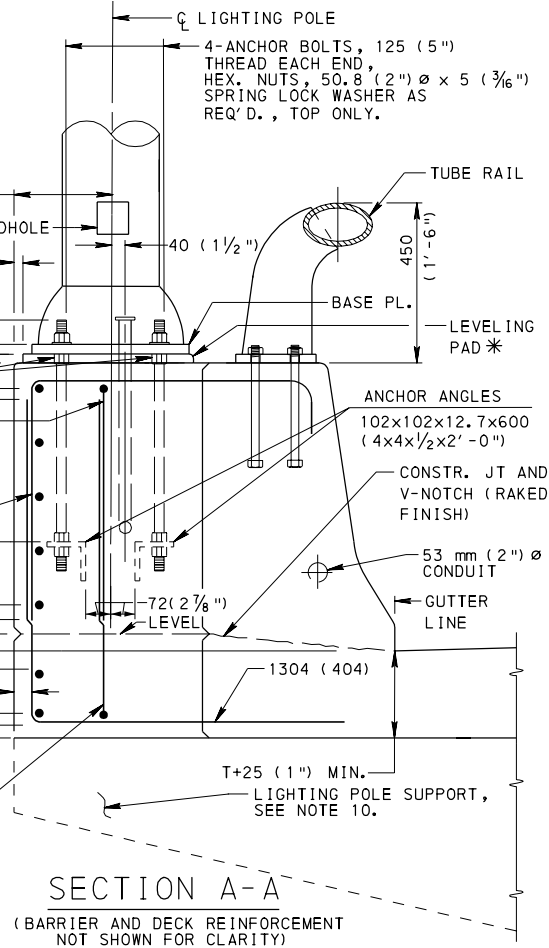


REINFORCEMENT DETAILS

NOTES:

- ALL DIMENSIONS ARE IN MILLIMETERS UNLESS OTHERWISE NOTED. U.S. CUSTOMARY UNITS IN () PARENTHESES.
- PROVIDE MATERIALS AND WORKMANSHIP IN ACCORDANCE WITH PUBLICATION 408.
- SET ANCHOR BOLTS ACCURATELY BY THE TEMPLATE FURNISHED BY THE MANUFACTURER, TO THE CORRECT ELEVATION AND ALIGNMENT AND SECURELY BRACE AGAINST DISPLACEMENT BEFORE THE SURROUNDING CONCRETE IS PLACED. ANCHOR BOLT DIAMETER AS REQUIRED BY LIGHTING POLE MANUFACTURER. (FOR FUTURE LIGHTING PROVISIONS, SEE CHART ON THIS SHEET.)
- SEAL CONDUIT AND PROTECT THREADS FOR FUTURE LIGHTING INSTALLATIONS.
- CONFORM ANCHOR MATERIALS TO 1101.4 PUB. 408 EXCEPT DO NOT GALVANIZE ANCHOR ANGLES.
- SET LIGHTING POLES TRULY VERTICAL WITH BASES LEVEL USING LEVELING NUTS.
- PROVIDE 50mm (2") CLEAR ON ALL REINFORCEMENT EXCEPT AS NOTED.
- PROVIDE A MINIMUM OF 60 mm (2½") CONCRETE COVER FOR CONDUIT.
- CONTINUE NORMAL BARRIER REINFORCEMENT THROUGH THICKENED PORTION OF BARRIER.
- LIGHTING POLE SUPPORT TO BE DESIGNED BY THE ENGINEER TO DISTRIBUTE LOAD TO BOTH FASCIA AND FIRST INTERIOR BEAM. FOR LIGHT POLE SUPPORTS, USE BD-657M FOR ABUTMENT DETAILS, AND BD-658M FOR PIER DETAILS.

NOTE: EITHER ALL METRIC OR ALL ENGLISH VALUES MUST BE USED ON PLANS. METRIC AND ENGLISH VALUES SHOWN MAY NOT BE MIXED.



BD-601M	CONCRETE DECK SLAB
BD-657M	ABUTMENT DETAILS, I-BEAM AND BOX BEAM BRIDGES
BD-658M	PIER DETAILS, I-BEAM AND BOX BEAM BRIDGES
BC-707M	PA HT BRIDGE BARRIER MISC. DETAILS
BC-721M	ELECTRICAL DETAILS
BC-722M	LIGHTING POLE ANCHORAGE
REFERENCE DRAWINGS	

COMMONWEALTH OF PENNSYLVANIA
DEPARTMENT OF TRANSPORTATION
BUREAU OF DESIGN

STANDARD
PA HT BRIDGE BARRIER
LIGHTING POLE ANCHORAGE DETAILS

RECOMMENDED JULY 29, 2005 <i>Acting Chief Bridge Eng.</i>	RECOMMENDED JULY 29, 2005 <i>Dir., Bureau of Design</i>	RECOMMENDED JULY 29, 2005 <i>Chief Eng., Hwy. Admin.</i>	SHEET 3 OF 3 BD-615M
--	--	---	-------------------------