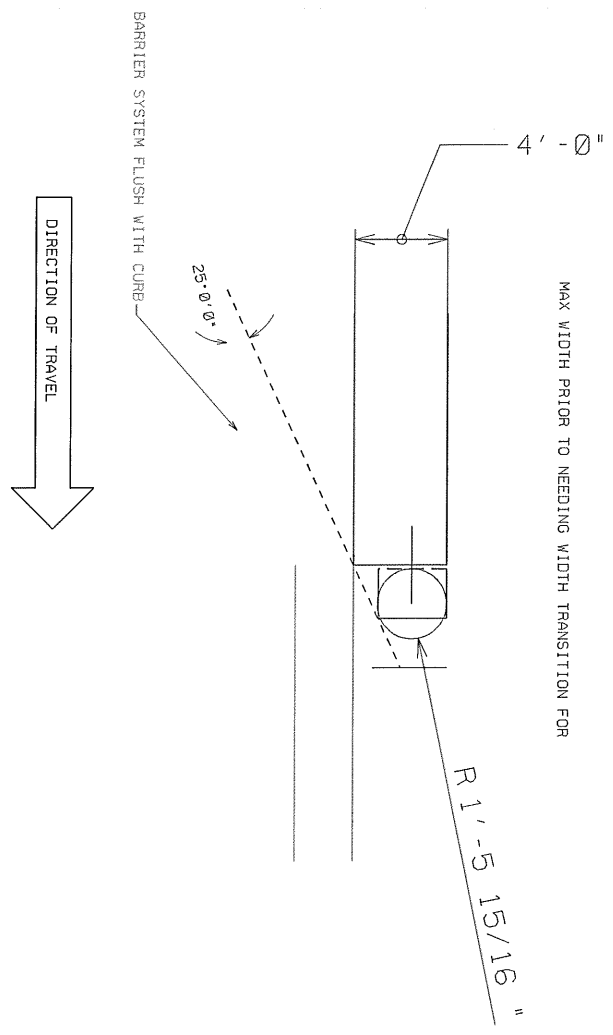
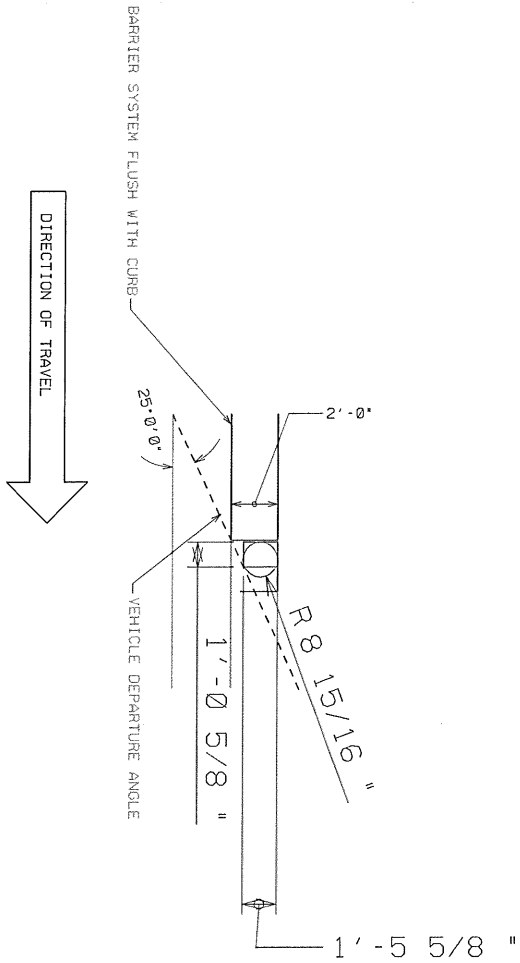


How to lay out
Crash cushion
to protect
all narrow hazards
with out concrete
transition

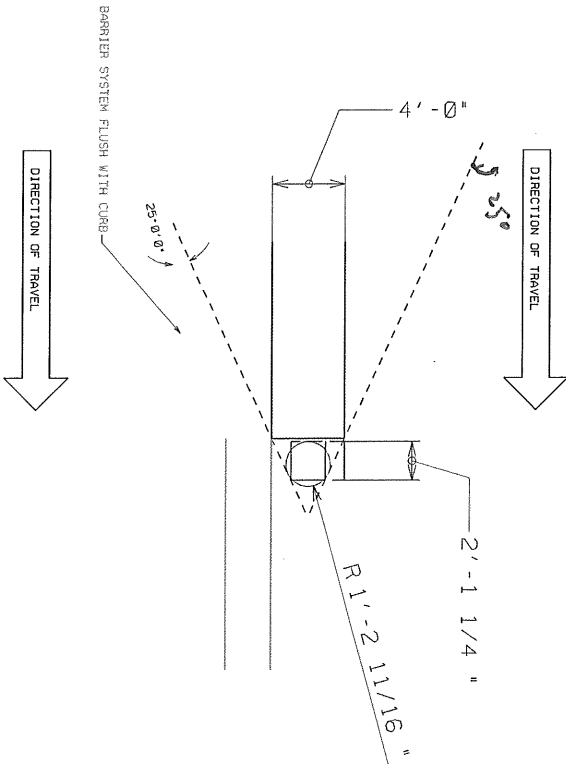
4



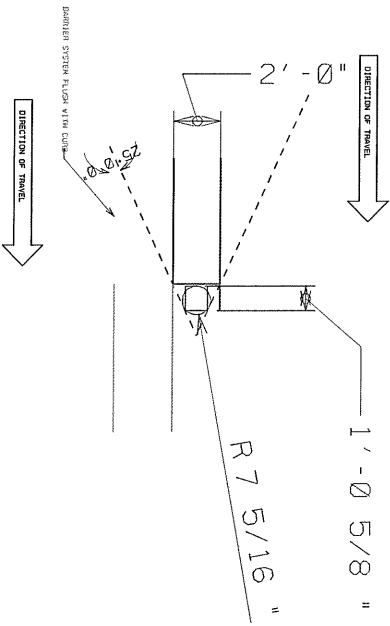
~~BACK~~ BACK OF BARRIER SYSTEM LAYOUT TO PROTECT ROUND HAZARD (E.G. SIGN SUPPORT, BRIDGE PIER)
LAYOUT DOES NOT ALLOW FOR MUCH ERROR IN PLACING CURB, ROUND SIGN SUPPORT, OR BARRIER SYSTEM.



~~BACK~~ BACK OF BARRIER SYSTEM LAYOUT TO PROTECT ROUND HAZARD (E.G. SIGN SUPPORT, BRIDGE PIER)
LAYOUT DOES NOT ALLOW FOR MUCH ERROR IN PLACING CURB, ROUND SIGN SUPPORT, OR BARRIER SYSTEM.



~~BACK~~ OF BARRIER SYSTEM LAYOUT TO PROTECT ROUND HAZARD (E.G. SIGN SUPPORT, BRIDGE PIER)
LAYOUT DOES NOT ALLOW FOR MUCH ERROR IN PLACING CURB, ROUND SIGN SUPPORT, OR BARRIER SYSTEM.



SYMBOLS BACK OF BARREL SYSTEM CAPABLE TO PROTECT ROAD HAZARD (E.G. SIGN SUPPORT, BRIDGE PIER)
LAYOUT DOES NOT ALLOW FOR HIGH EPOCH IN PUNCHING CURVE, ROAD SIGN SUPPORT, OR BARREL SYSTEM.