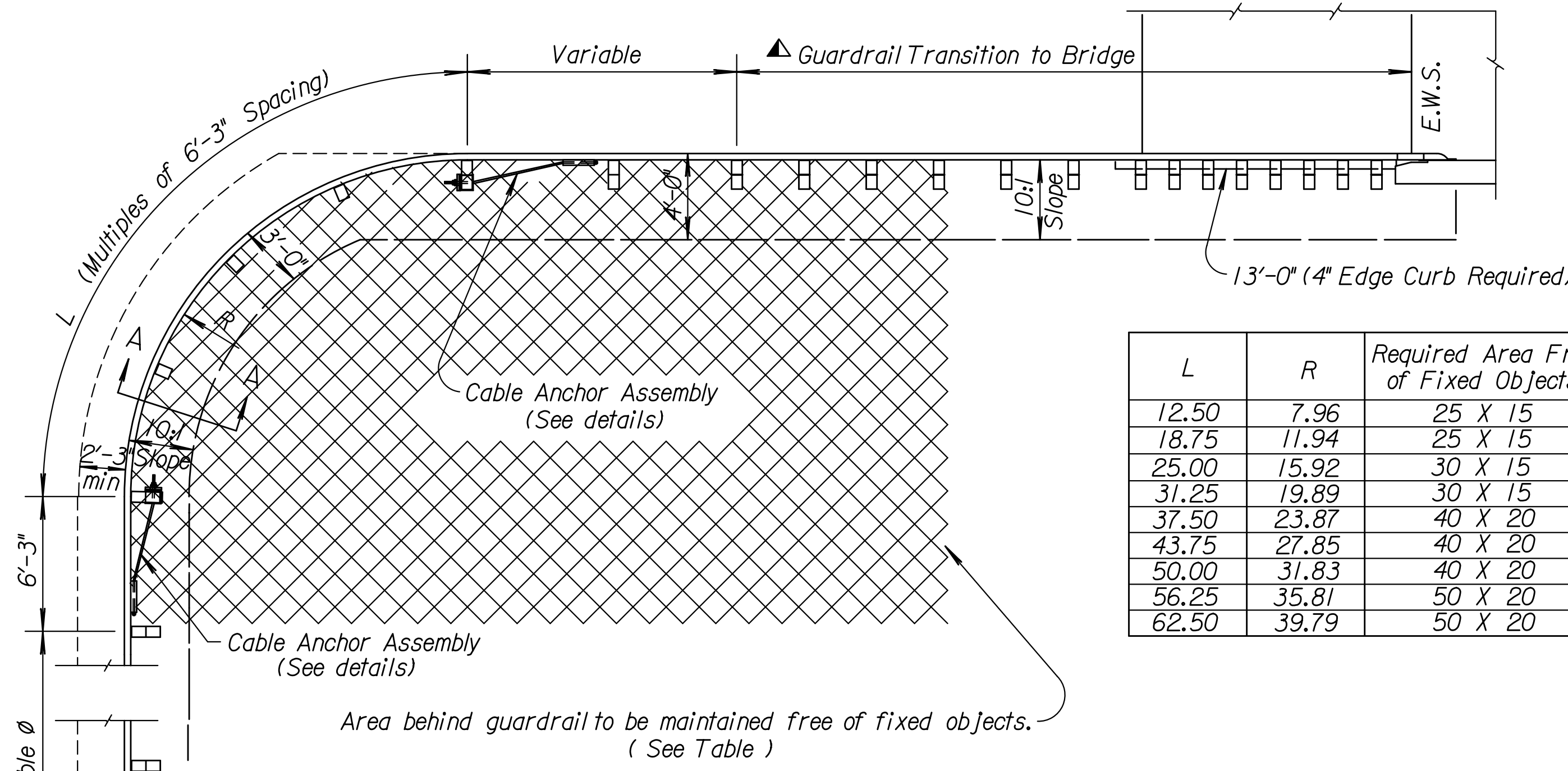
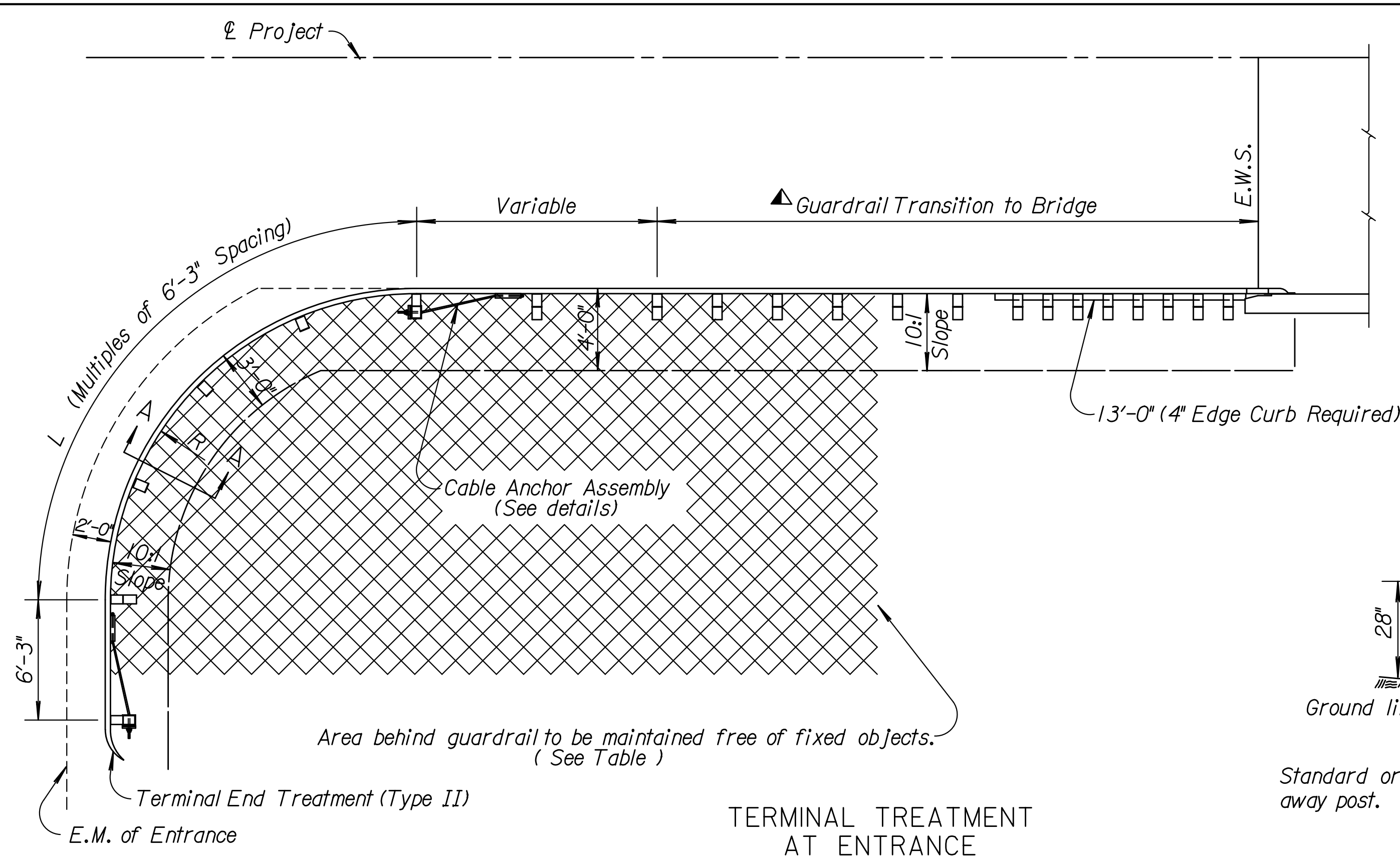
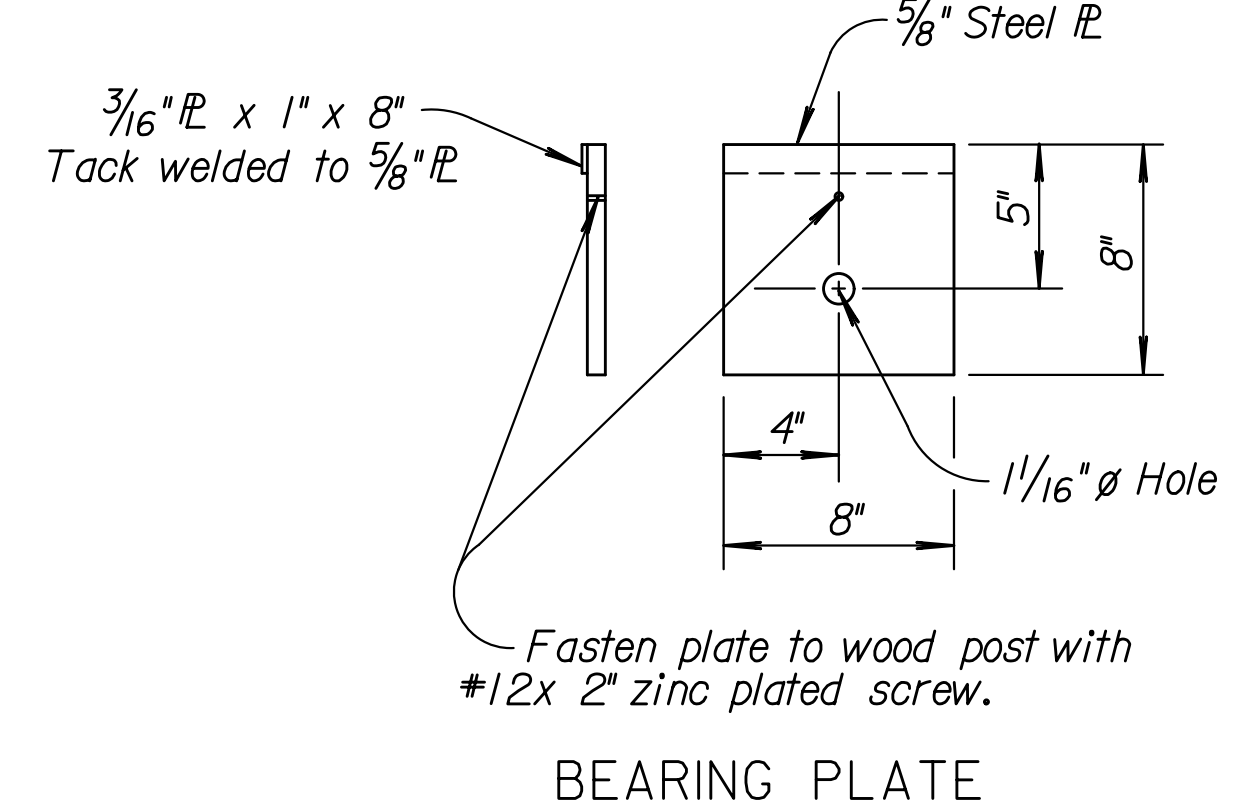
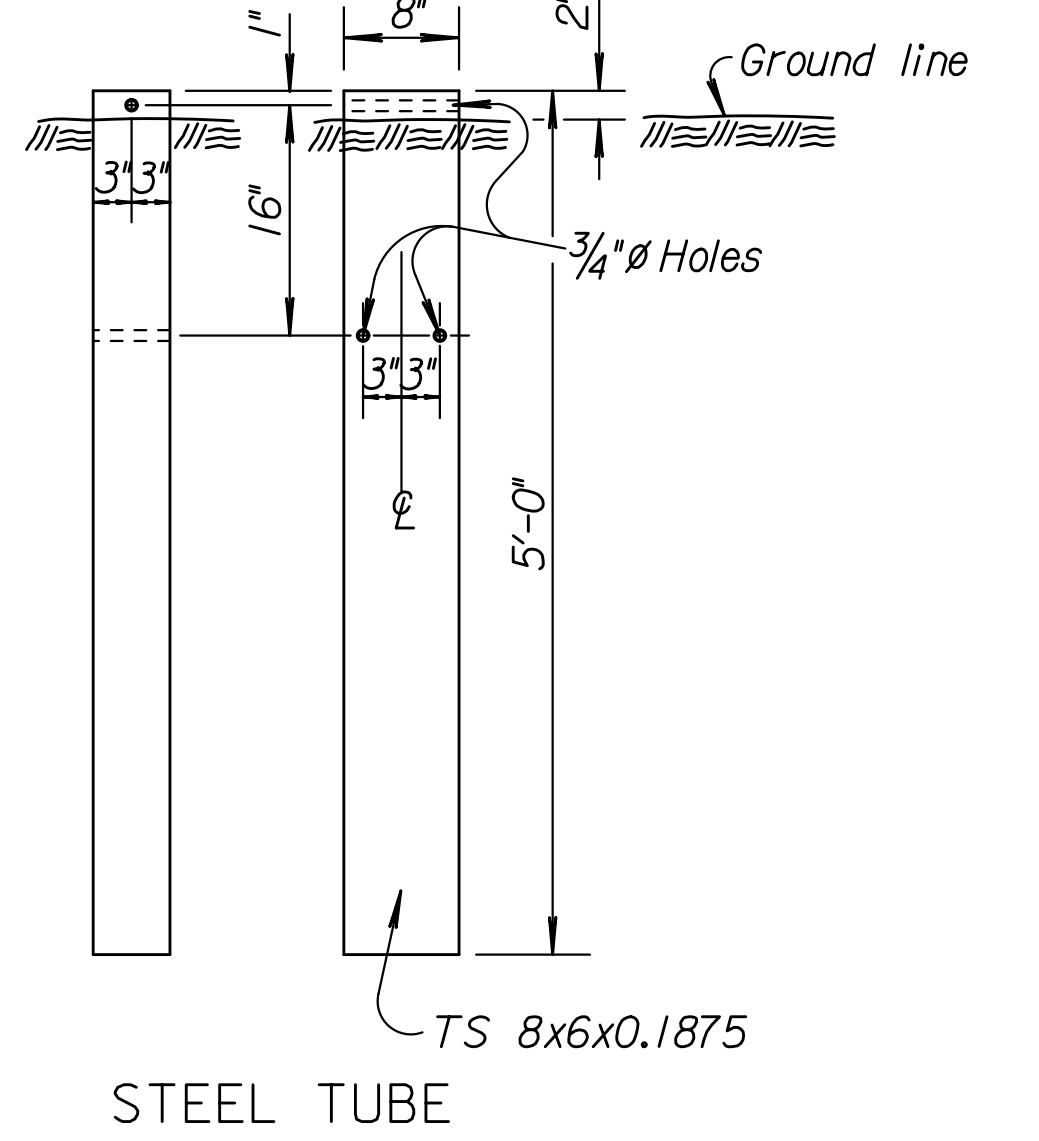
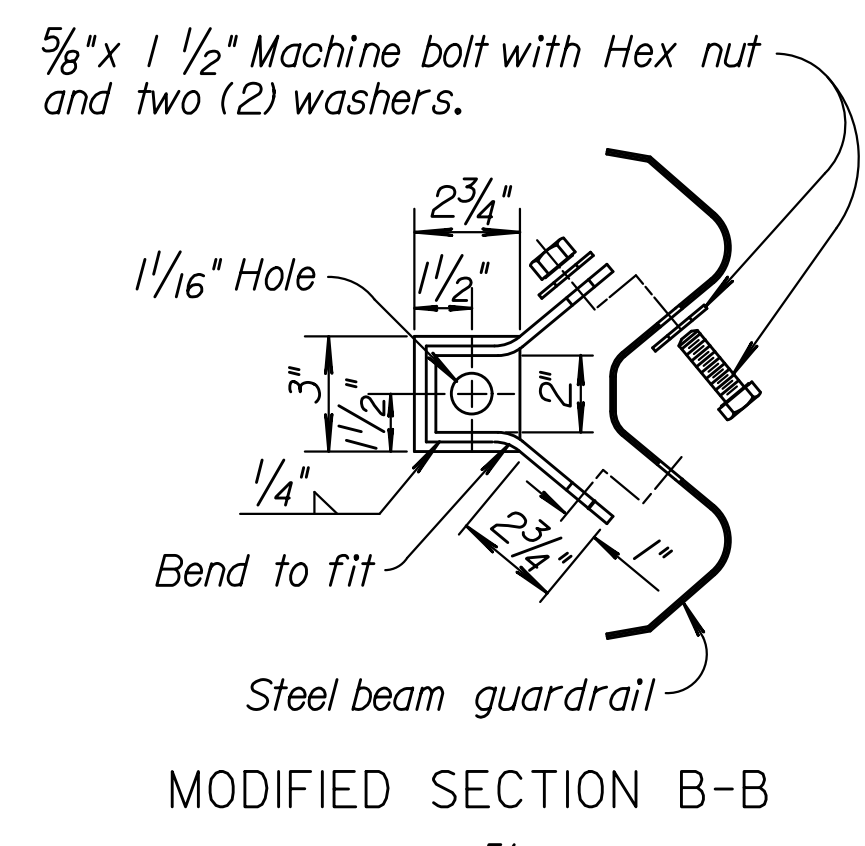
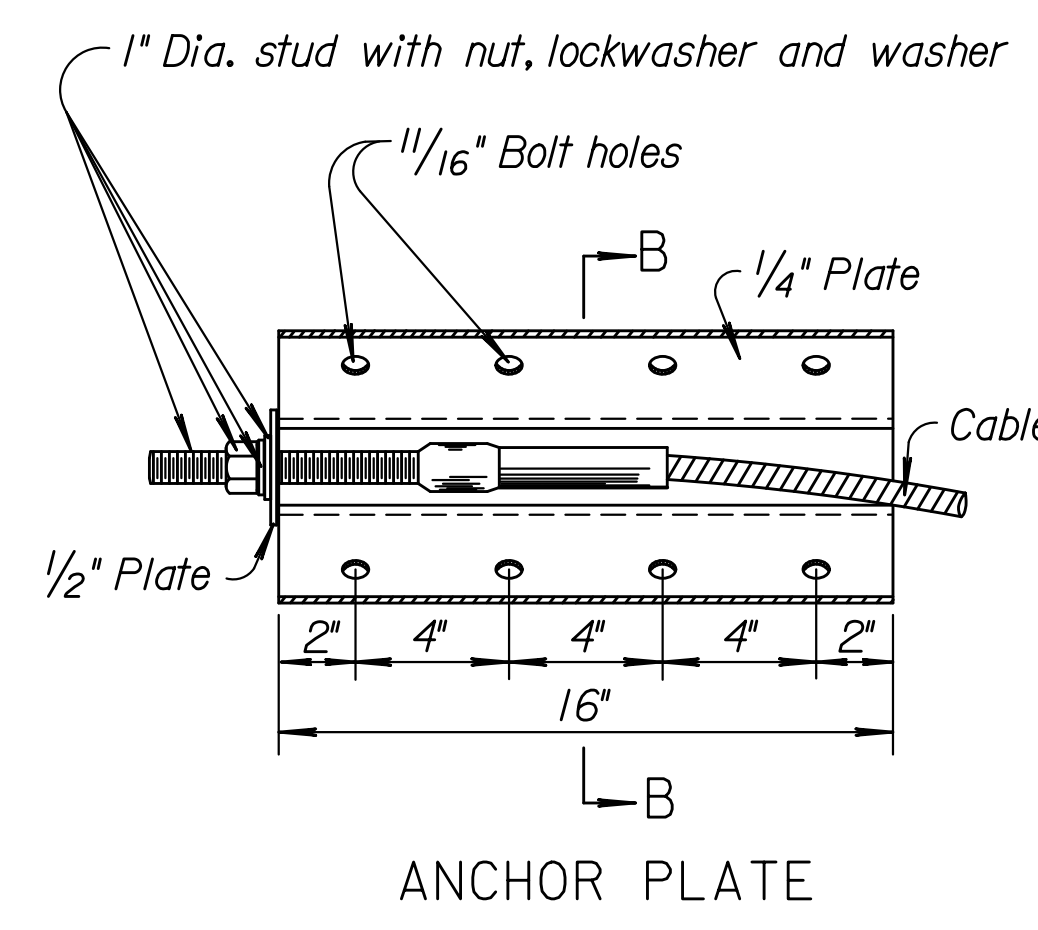
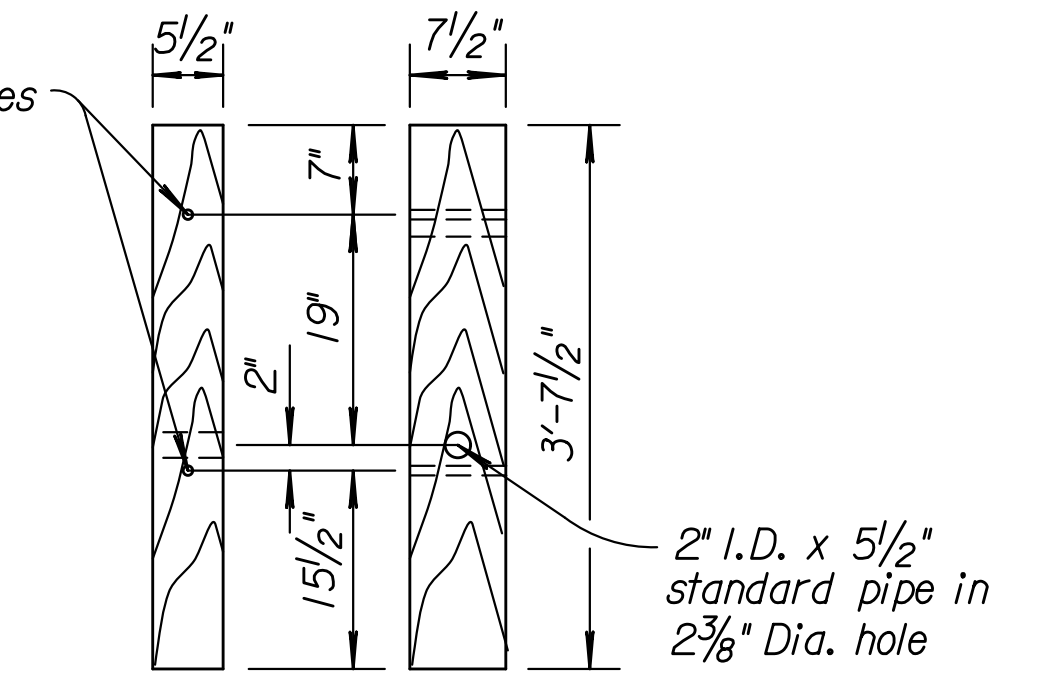
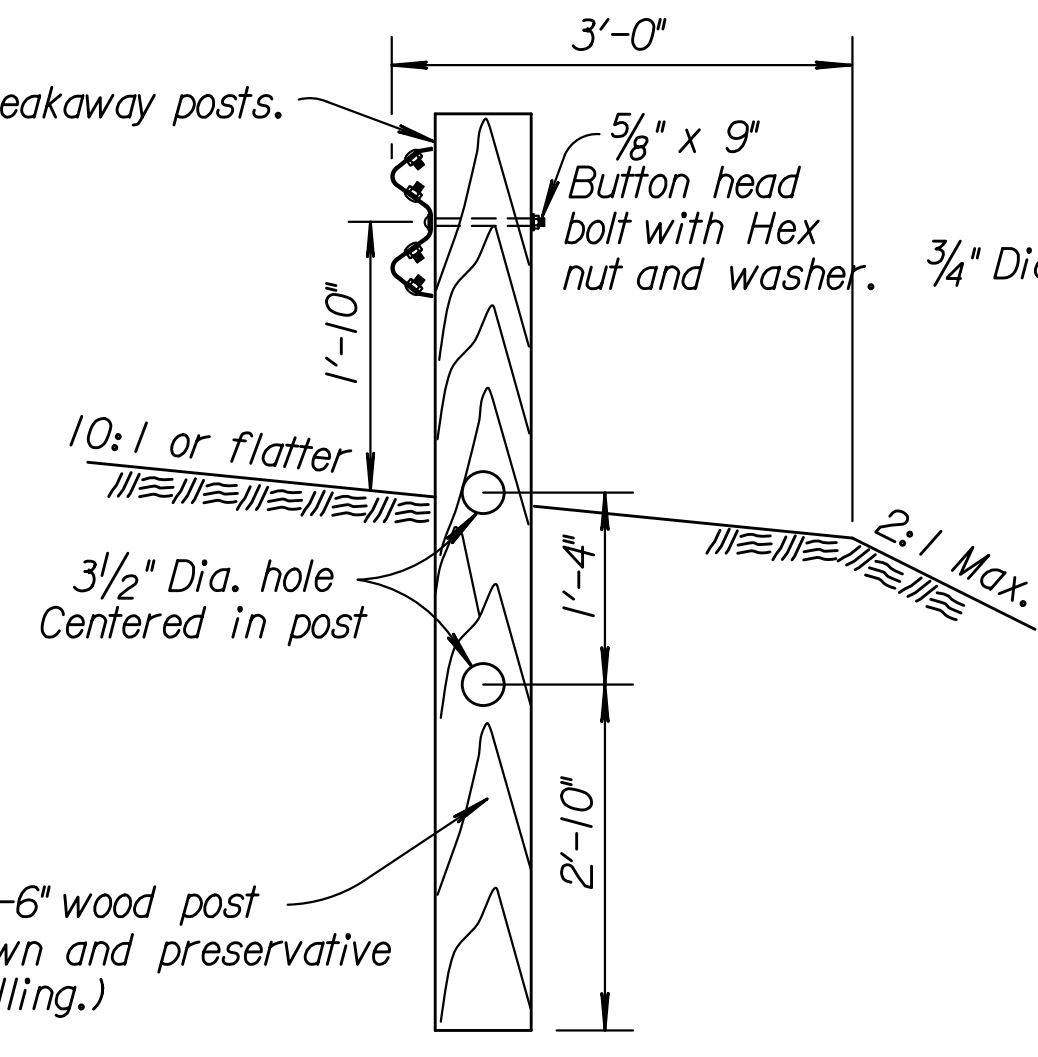
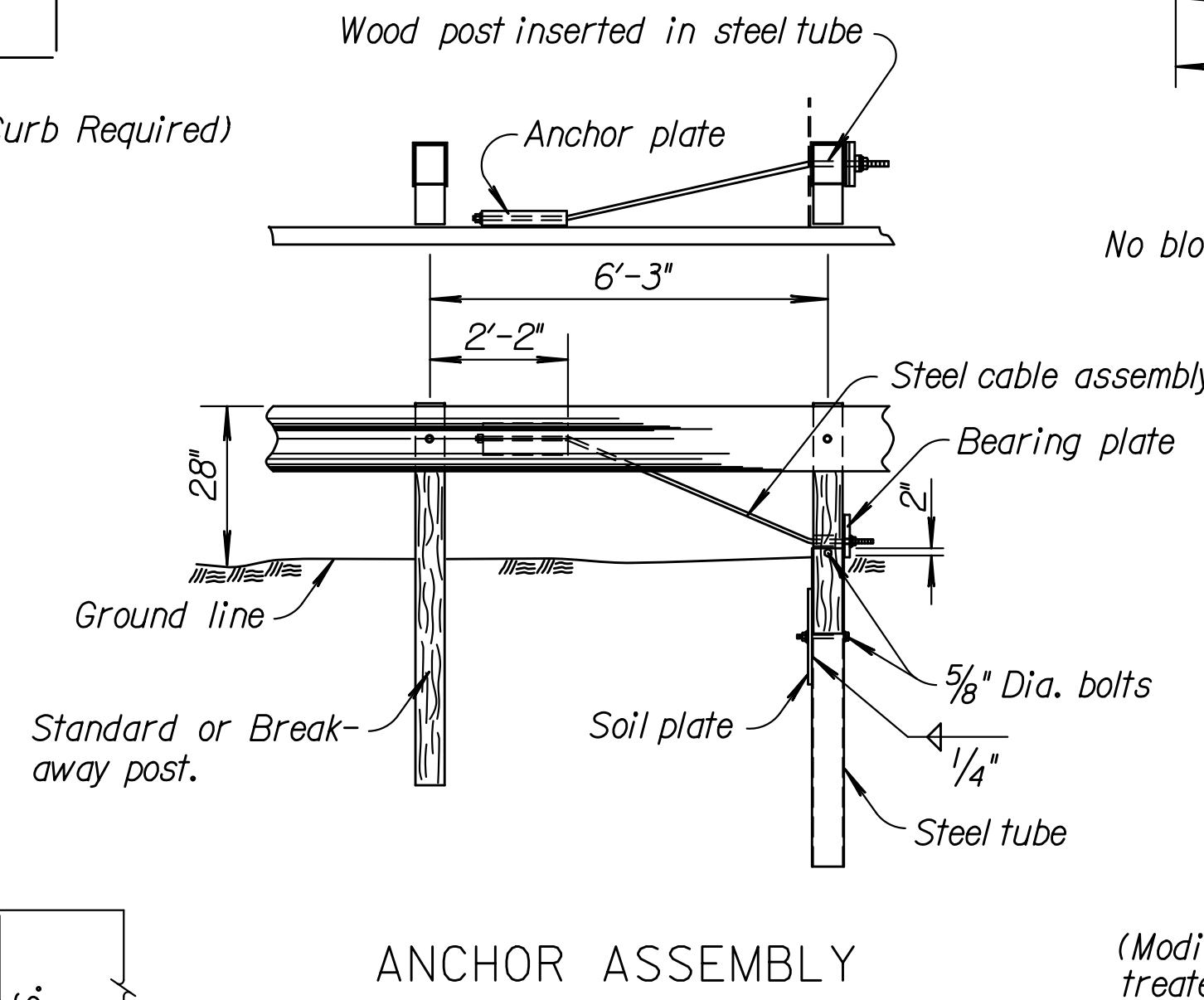
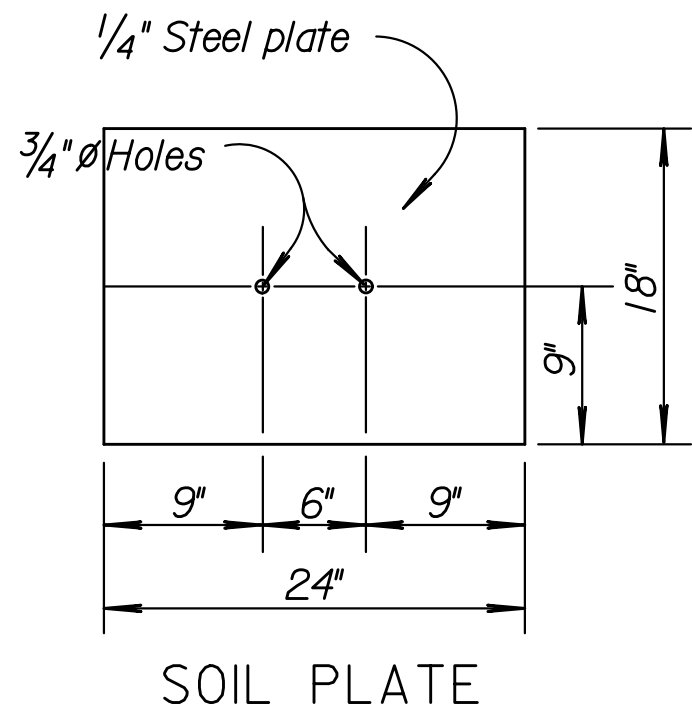
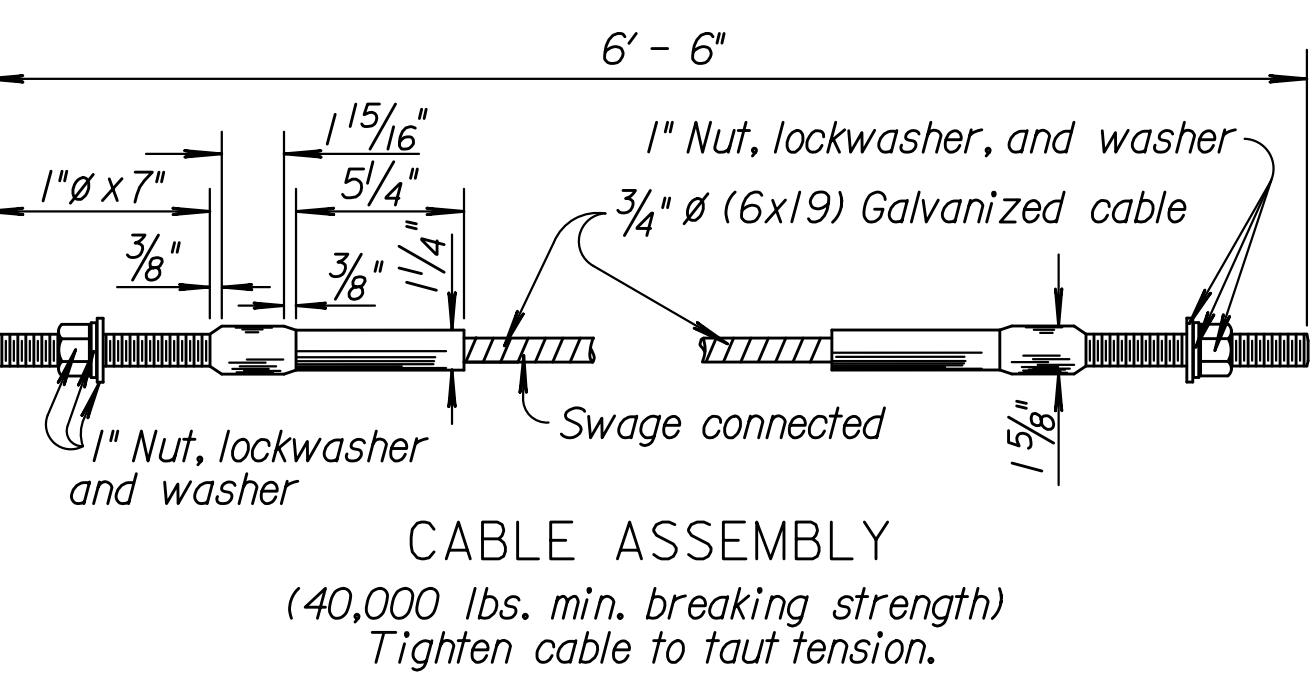


STATE	PROJECT NO.	YEAR	SHEET NO.	TOTAL SHEETS
KANSAS				



L	R	Required Area Free of Fixed Objects
12.50	7.96	25 X 15
18.75	11.94	25 X 15
25.00	15.92	30 X 15
31.25	19.89	30 X 15
37.50	23.87	40 X 20
43.75	27.85	40 X 20
50.00	31.83	40 X 20
56.25	35.81	50 X 20
62.50	39.79	50 X 20



⊗ SRT shown. Other crashworthy terminals may be utilized. See the guardrail layout sheets for additional details.

∅ Variable length must be in multiple of 6'-3". Length required is based on length of need for approach sideroad traffic. See guardrail layout details for length.

▲ 31'-3" Minimum length for thrie beam transition. See Standard Drawings RD612 & RD613. 25'-0" Minimum length for W-beam with rubrail transition. See Standard Drawing RD615.

Plotted : 29-SEP-2015 15:32
Drawn By : trroads
File : rd619.dgn

NO.	DATE	REVISIONS	BY	APP'D
8	9-24-15	Revised Name to 28" Mounting Height	T.T.R.	S.W.K.
7	12-14-10	Rev. notes, details & 28" rail height	S.W.K.	J.O.B.
6	7-20-04	Rev. layout, notes, g.d.f.c. to guardrail	R.J.S.	J.O.B.
5	3-05-01	Add sideroad detail	R.J.S.	J.O.B.

KANSAS DEPARTMENT OF TRANSPORTATION

DETAILS FOR GUARDRAIL AT INTERSECTING ROADWAY 28 INCH MOUNTING HEIGHT

RD619

DESIGNED	QUANTITIES	APP'D. James O. Brewer
DESIGN CK.	DETAIL CK.	TRACED Bowser
		TRACE CK. King

KDOT Graphics Certified 09-29-2015