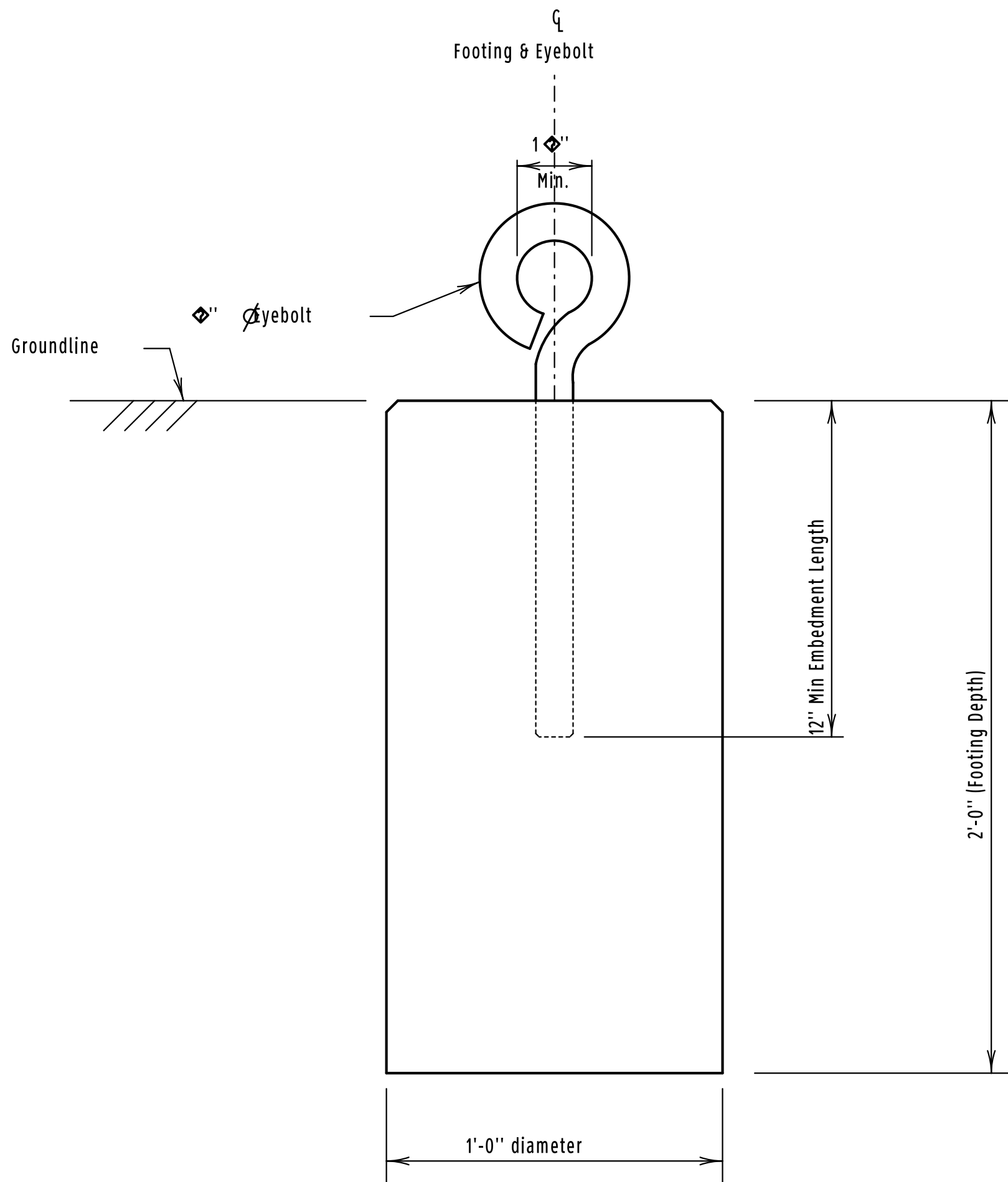


POST FOOTING DETAIL



CABLE TIE DOWN FOOTING

ESTIMATED QUANTITIES		
ITEM	UNIT	QUANTITY
Class M5 Concrete	CU.YD.	0.5

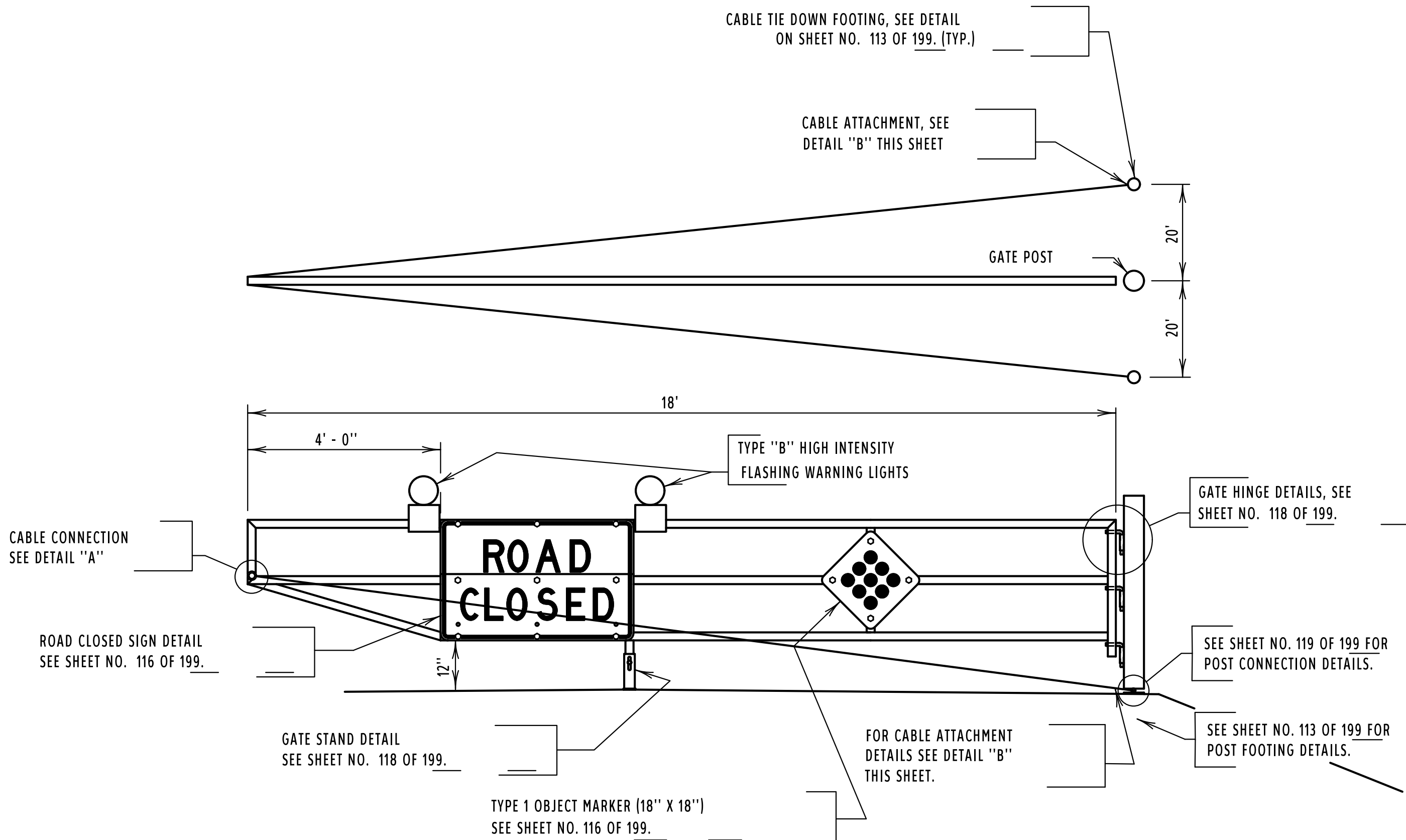
The quantity shown above is for one Post footing and two Cable Tie Down footings.

NOTE: For location of footings see Sheet No. 114 of 199 and Road Closure Gate notes on Sheet No. 112 of 199.

CONCRETE FOOTINGS FOR  
ROAD CLOSURE GATE  
S. D. DEPT. OF TRANSPORTATION  
DECEMBER 1996

MK	REVISION		DATED	BY
DESIGNED BY	DRAWN BY	CHECKED BY	APPROVED	
MODY4428	4428SE01		BRIDGE ENGINEER	

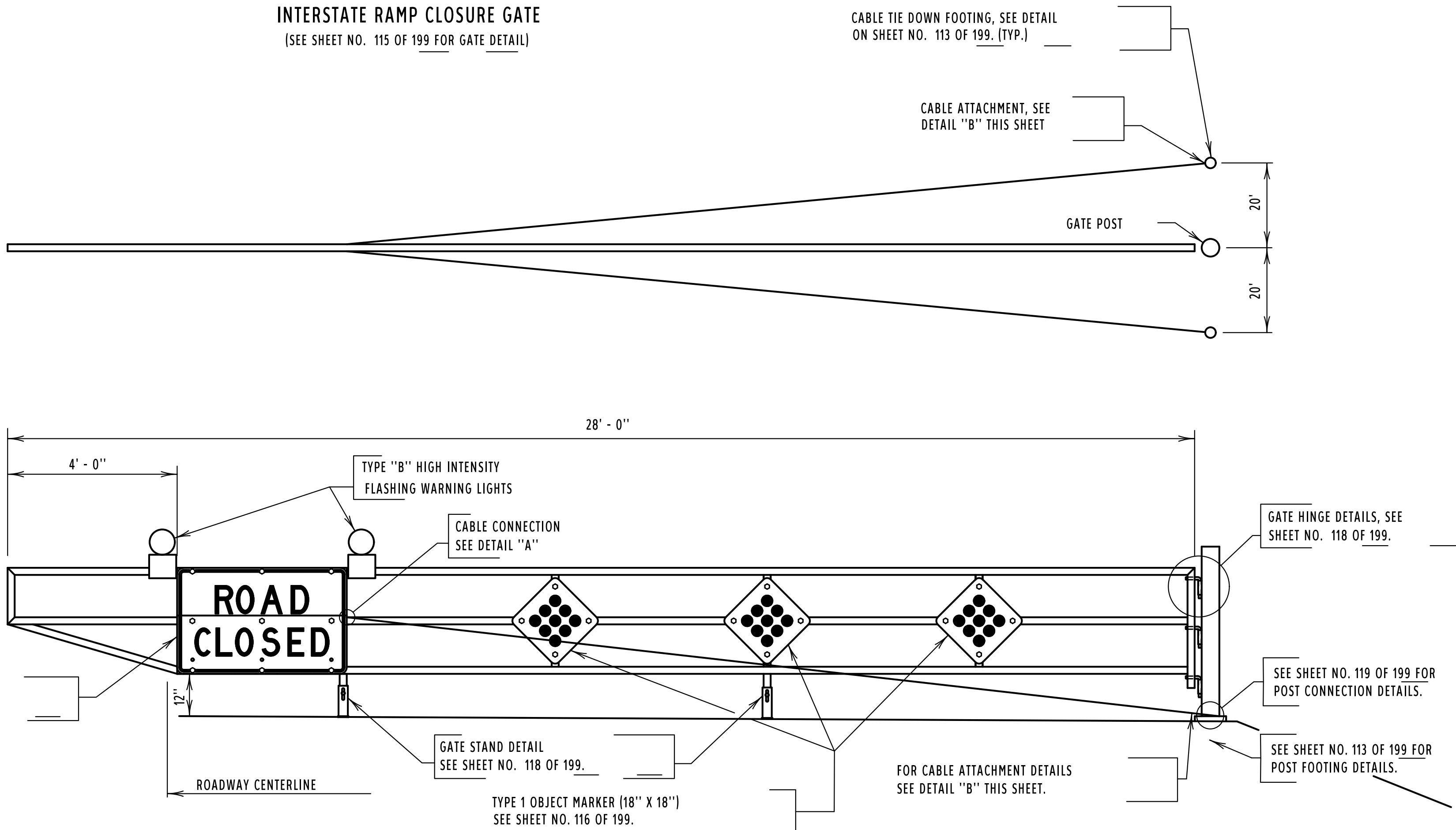
FED. HWY. ADMIN. NO.	STATE OF	PROJECT	SHEET NO.	TOTAL SHEETS
8	S.D.	IM 29-3(89)97	114	199



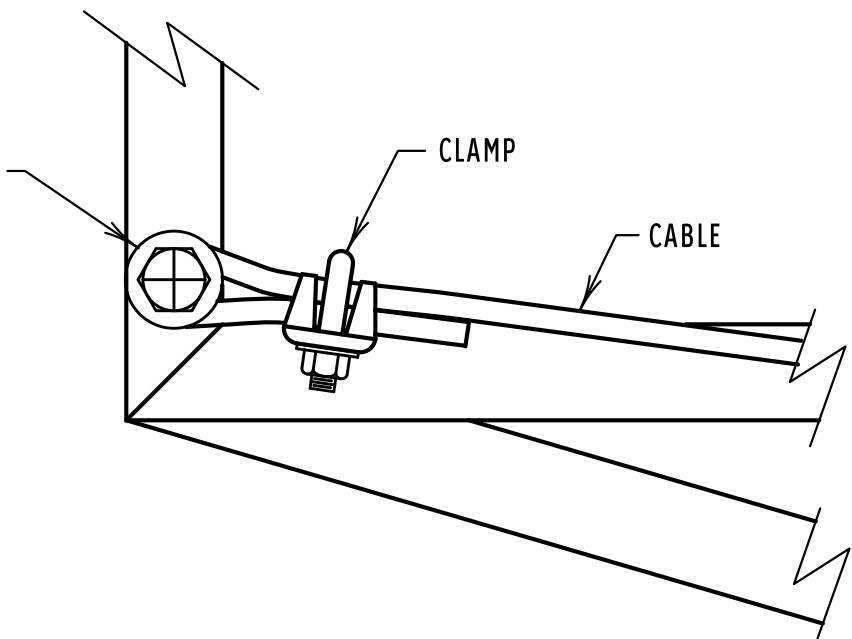
INTERSTATE RAMP CLOSURE GATE  
(SEE SHEET NO. 115 OF 199 FOR GATE DETAIL)

CABLE TIE DOWN FOOTING, SEE DETAIL ON SHEET NO. 113 OF 199. (TYP.)

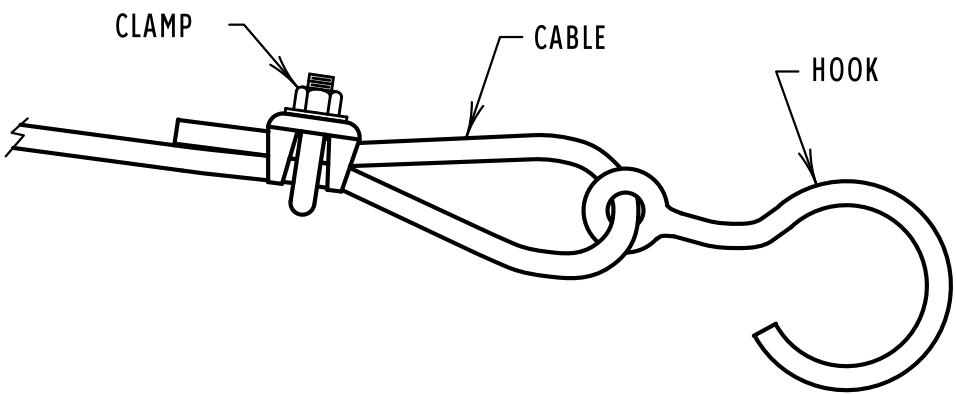
CABLE ATTACHMENT, SEE DETAIL 'B' THIS SHEET



MAINLINE INTERSTATE CLOSURE GATE  
(SEE SHEET NO. 115 OF 199 FOR GATE DETAIL)



DETAIL "A"

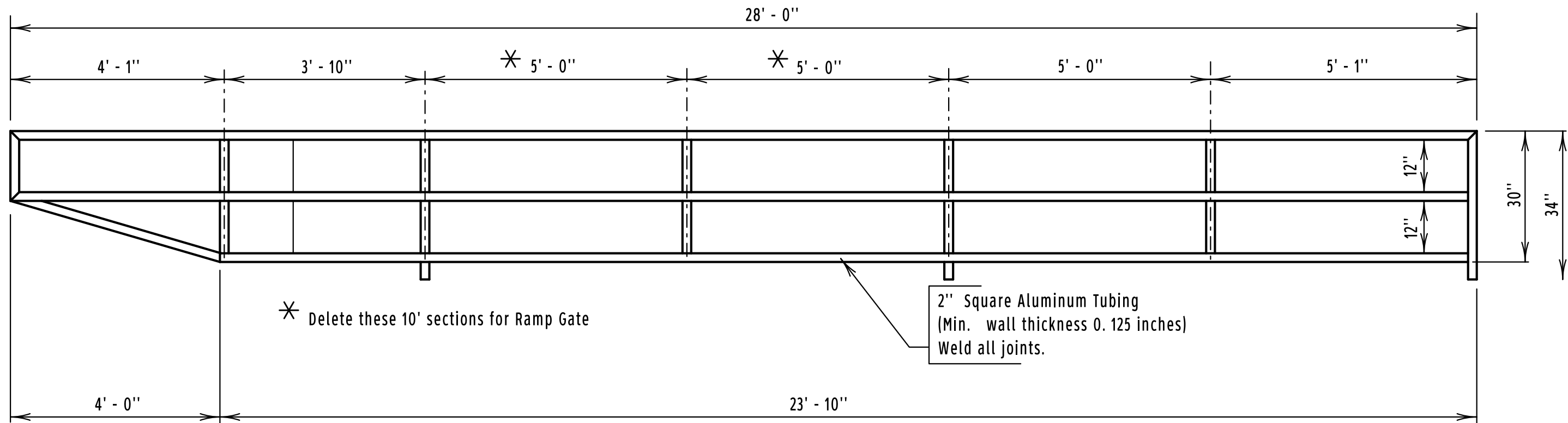


DETAIL "B"

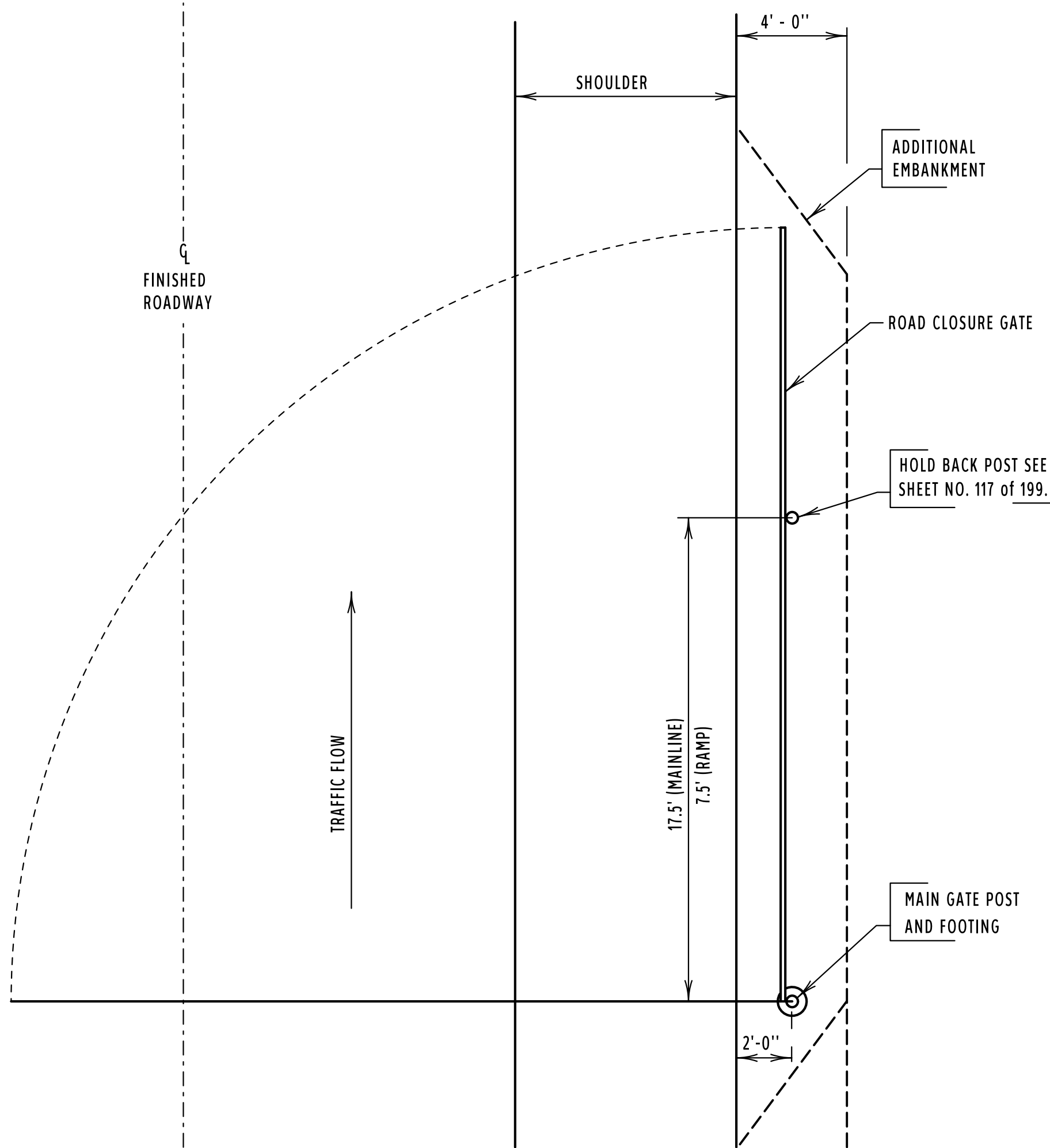
ORIGINAL CONSTRUCTION PLANS

ROAD CLOSURE GATE  
S. D. DEPT. OF TRANSPORTATION  
DECEMBER 1996

MK	REVISION		DATED	BY
DESIGNED BY	DRAWN BY	CHECKED BY	APPROVED	
MODY4428	4428SE02		BRIDGE ENGINEER	



GATE DETAIL  
(For location of gate See Sheet No. 114 of 199.)



GATE IN THE OPEN POSITION

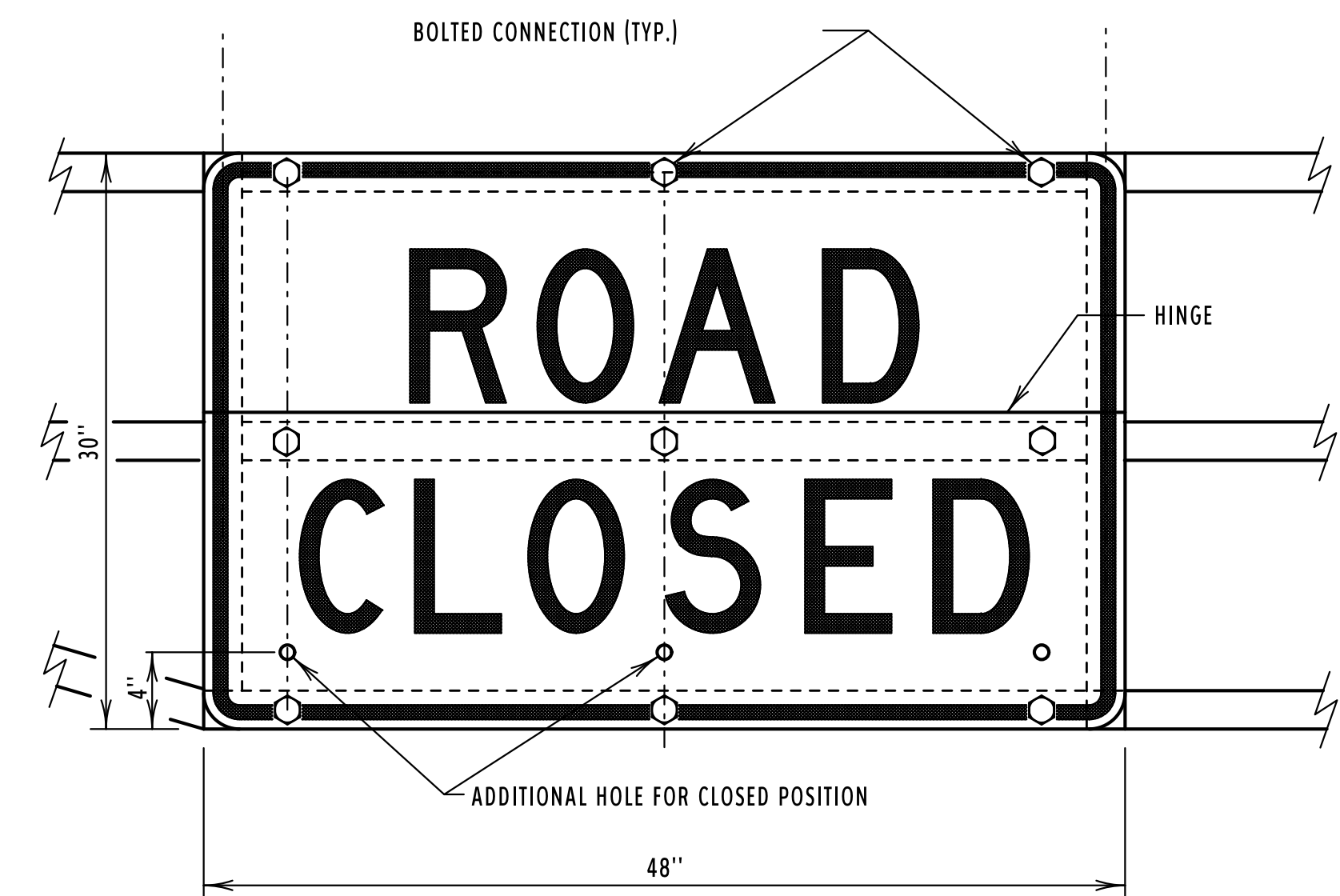
CONTRACTOR TO PROVIDE SUFFICIENT FASTENERS AND/OR HOOKS ON THE GATE FOR STORAGE OF THE CABLES WHEN GATE IS IN THE OPEN POSITION.

- NOTES REGARDING ADDITIONAL EMBANKMENT
1. INSLOPES WILL MATCH EXISTING INSLOPES.
  2. INSLOPES WILL BE RESEEDED AND MULCHED TO THE SATISFACTION OF THE ENGINEER.
  3. EMBANKMENT WILL BE COMPACTED TO THE SATISFACTION OF THE ENGINEER.
  4. PAYMENT FOR THIS WORK WILL BE INCIDENTAL TO OTHER ITEMS.

ORIGINAL CONSTRUCTION PLANS

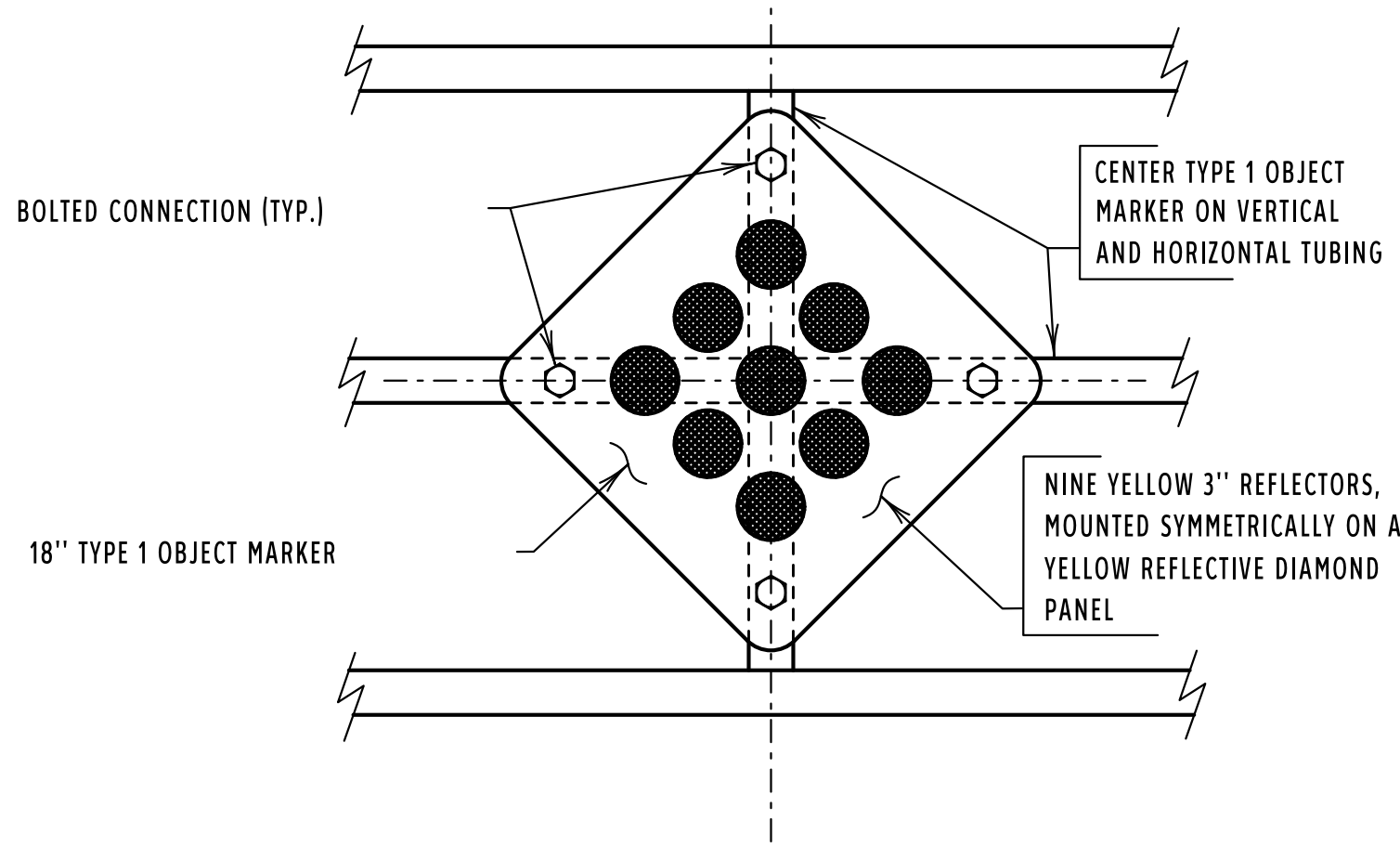
GATE DETAIL FOR  
ROAD CLOSURE GATE  
S. D. DEPT. OF TRANSPORTATION  
DECEMBER 1996

MK	REVISION		DATED BY
DESIGNED BY	DRAWN BY	CHECKED BY	APPROVED
MODY4428	4428SE03		BRIDGE ENGINEER



THE SIGN SHALL MEET THE REQUIREMENTS OF AN R11-2 SIGN (MUTCD). IT MUST BE REFLECTORIZED.

SIGN DETAILS  
(For sign location see Sheet 114 of 199)

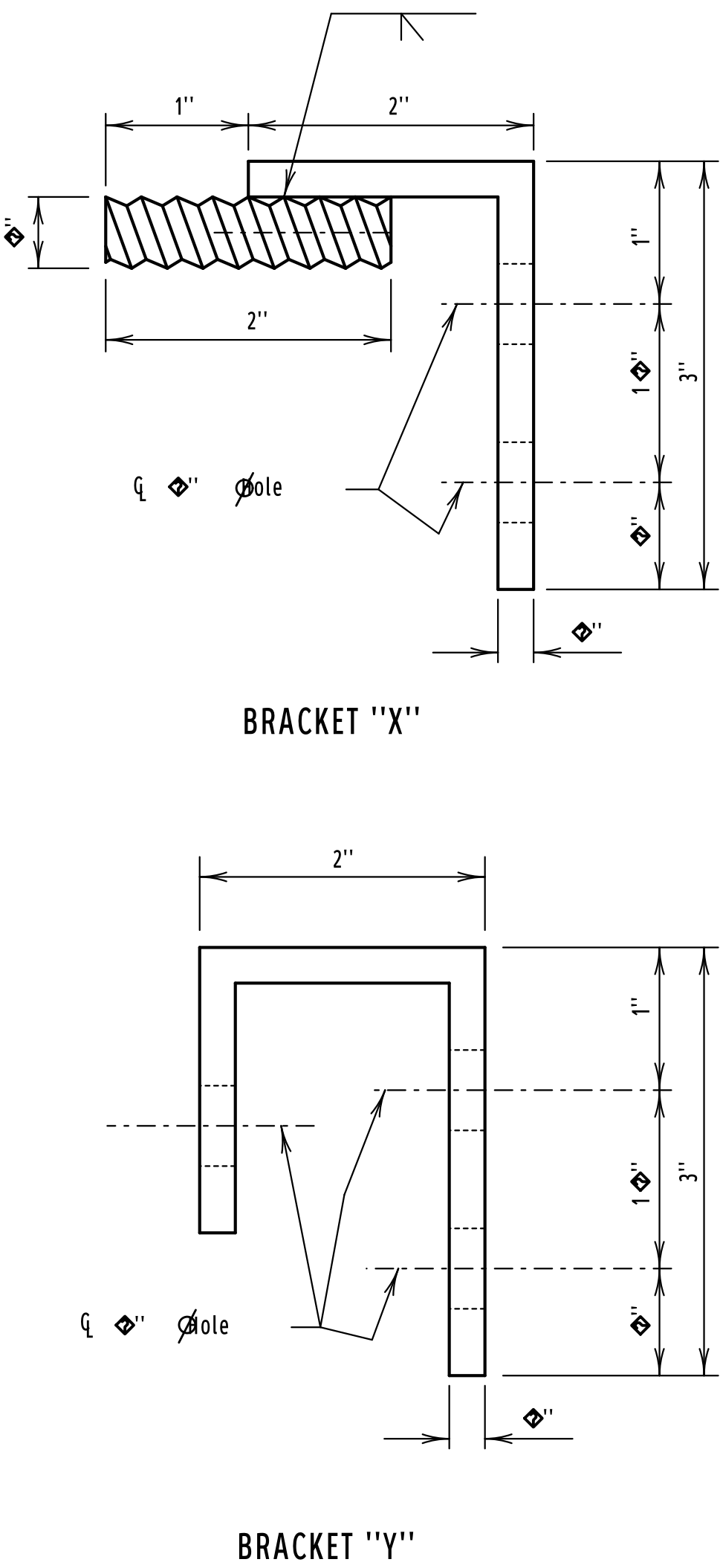
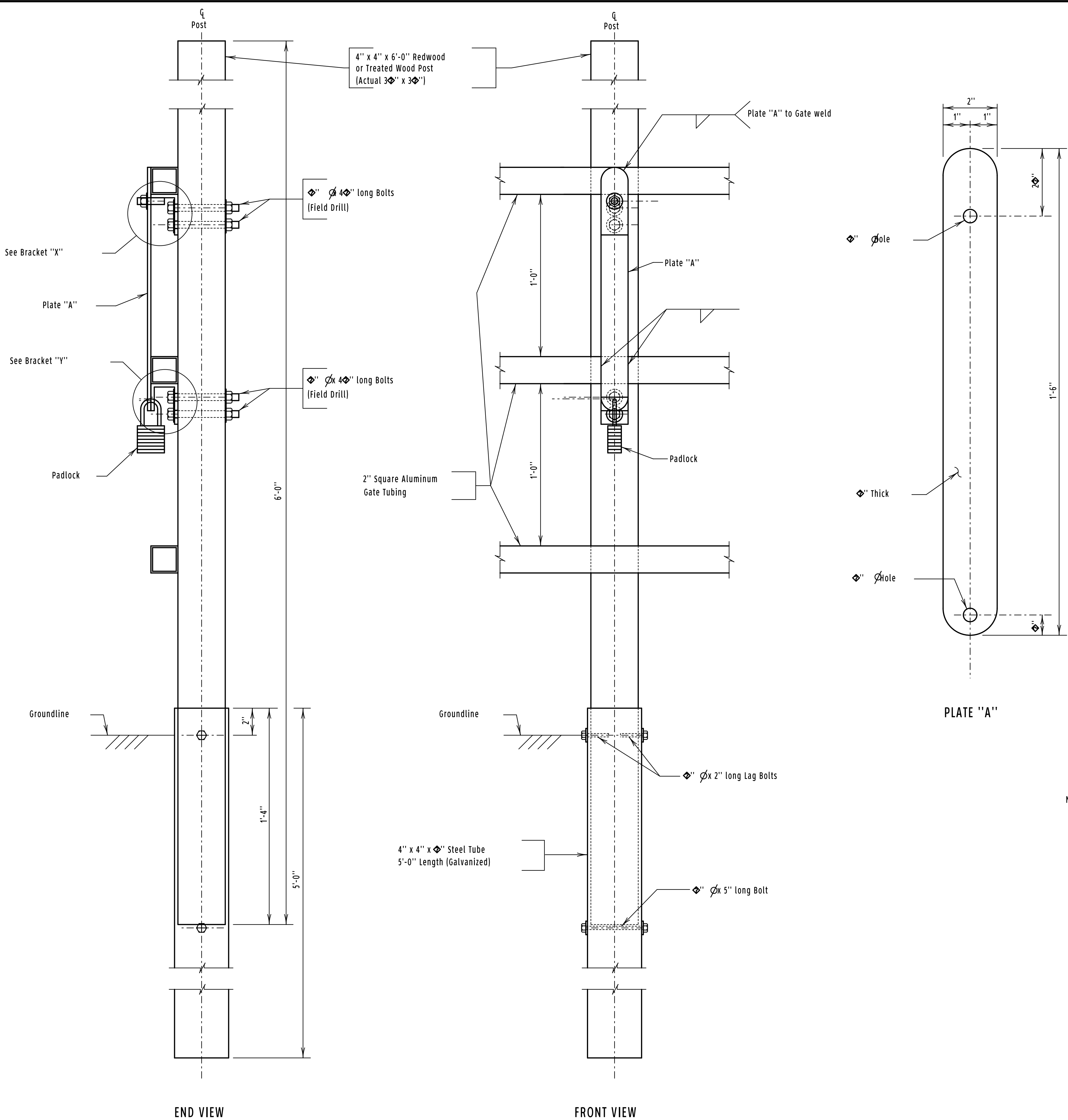


TYPICAL TYPE 1 OBJECT MARKER  
(For sign location see Sheet 114 of 199)

ORIGINAL CONSTRUCTION PLANS

SIGN AND OBJECT MARKER DETAILS FOR  
ROAD CLOSURE GATE  
S. D. DEPT. OF TRANSPORTATION  
DECEMBER 1996

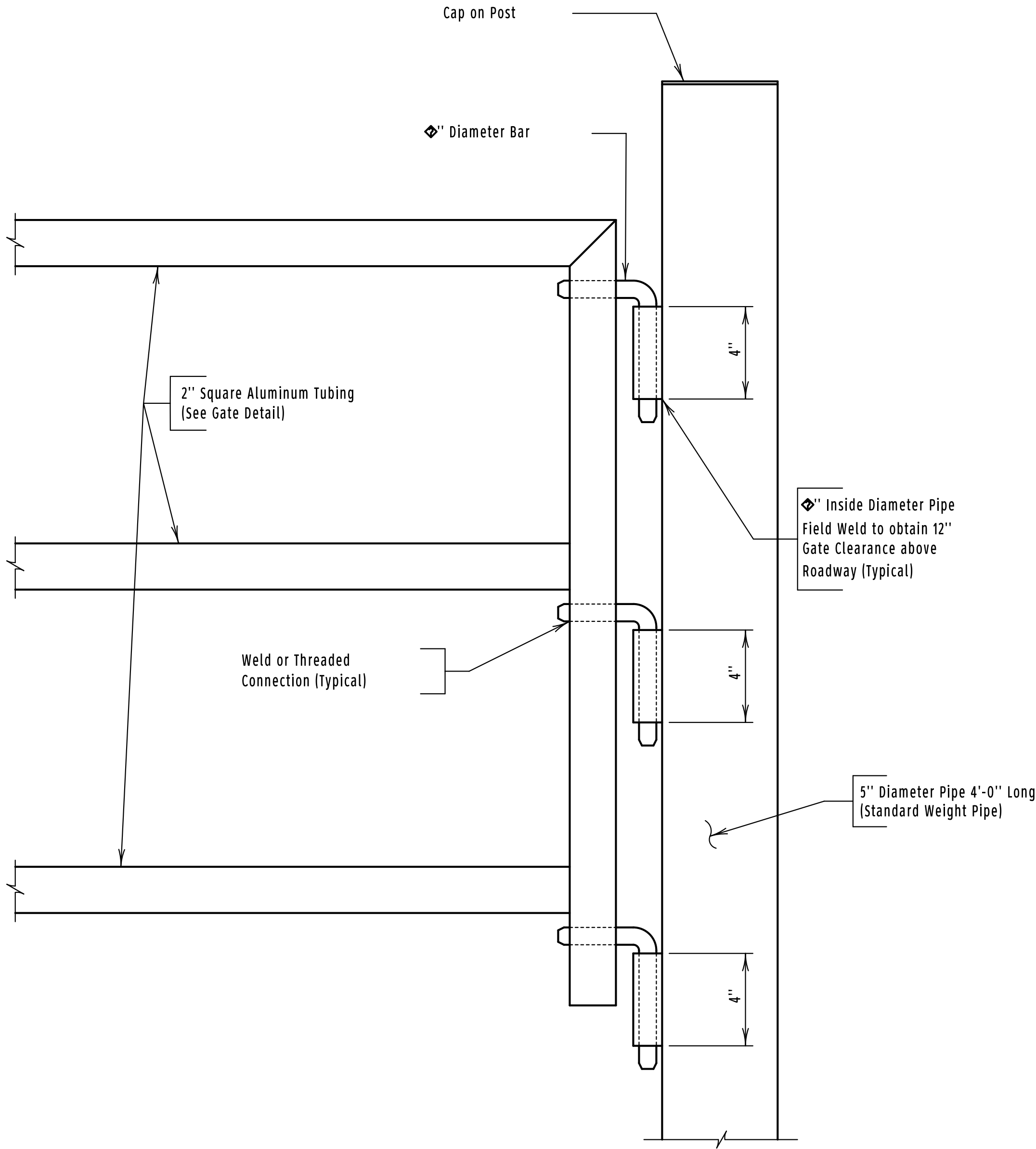
MK	REVISION		DATED BY
DESIGNED BY	DRAWN BY	CHECKED BY	APPROVED
MODY4428	4428SE04		BRIDGE ENGINEER



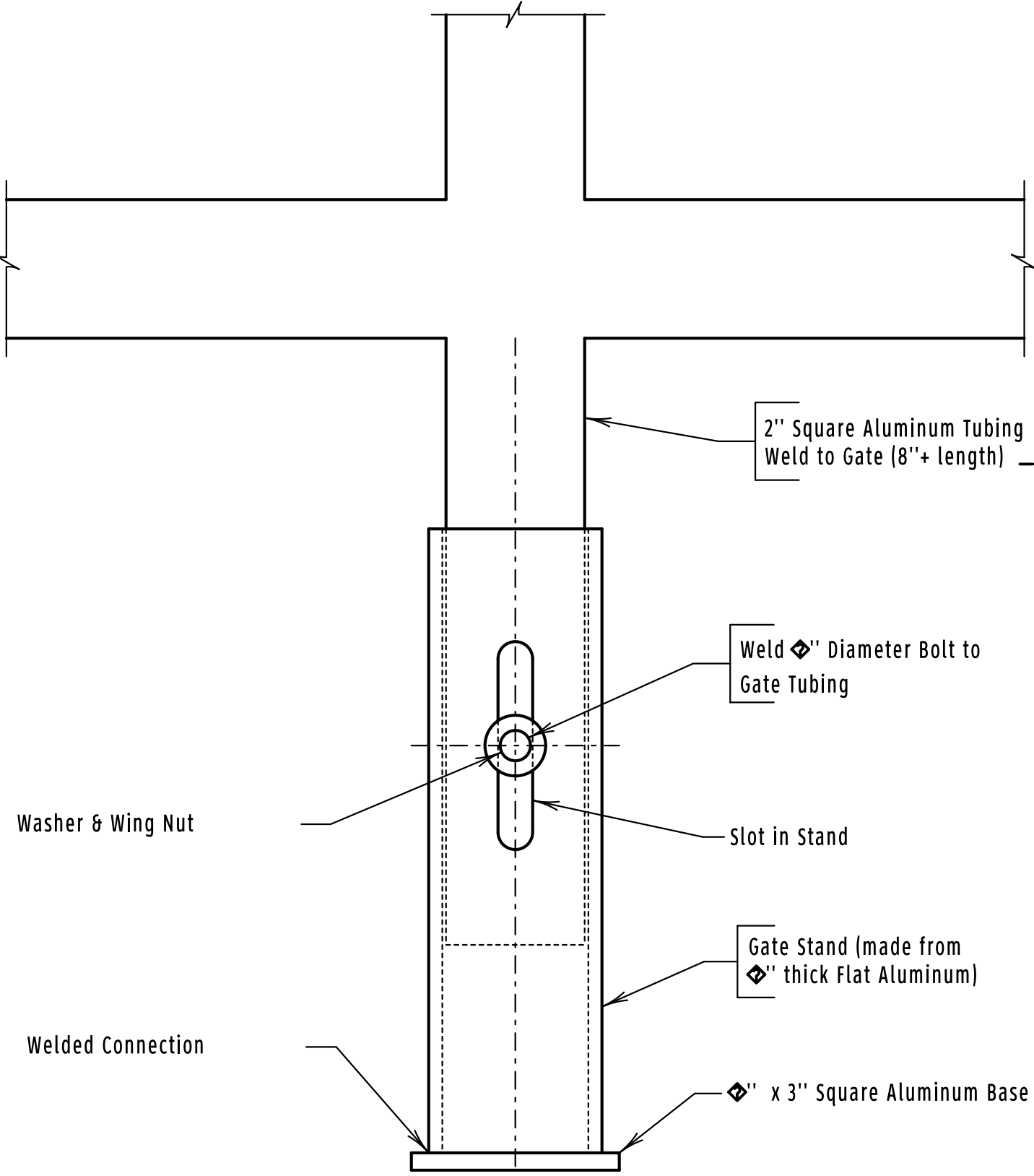
ORIGINAL CONSTRUCTION PLANS

HOLD BACK POST FOR  
ROAD CLOSURE GATE  
S. D. DEPT. OF TRANSPORTATION  
DECEMBER 1996

MK	REVISION		DATED BY
DESIGNED BY	DRAWN BY	CHECKED BY	APPROVED
MODY4428	4428SE05		BRIDGE ENGINEER



GATE HINGE DETAIL  
(For location of gate hinge see Sheet No. 114 of 199)

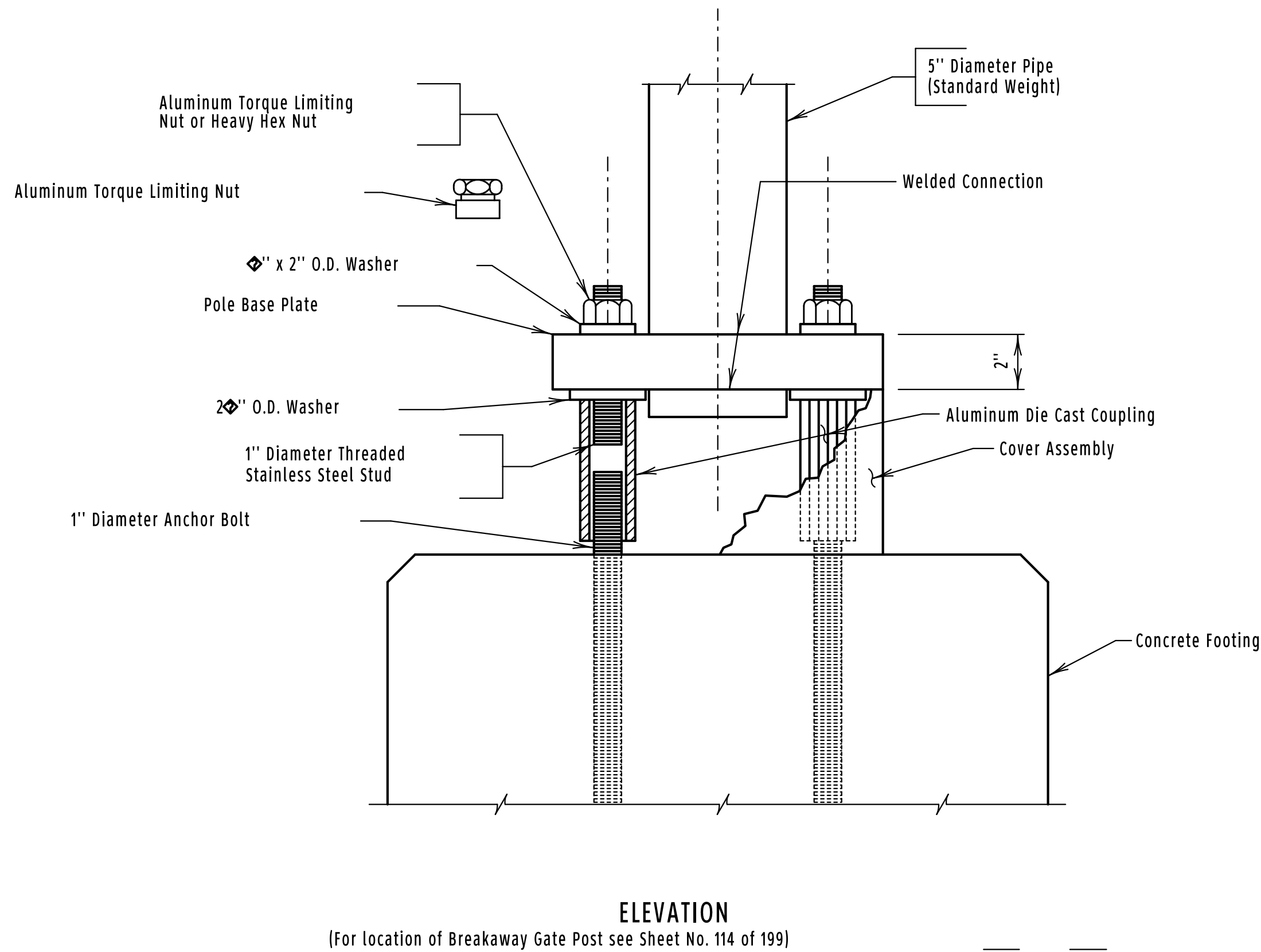
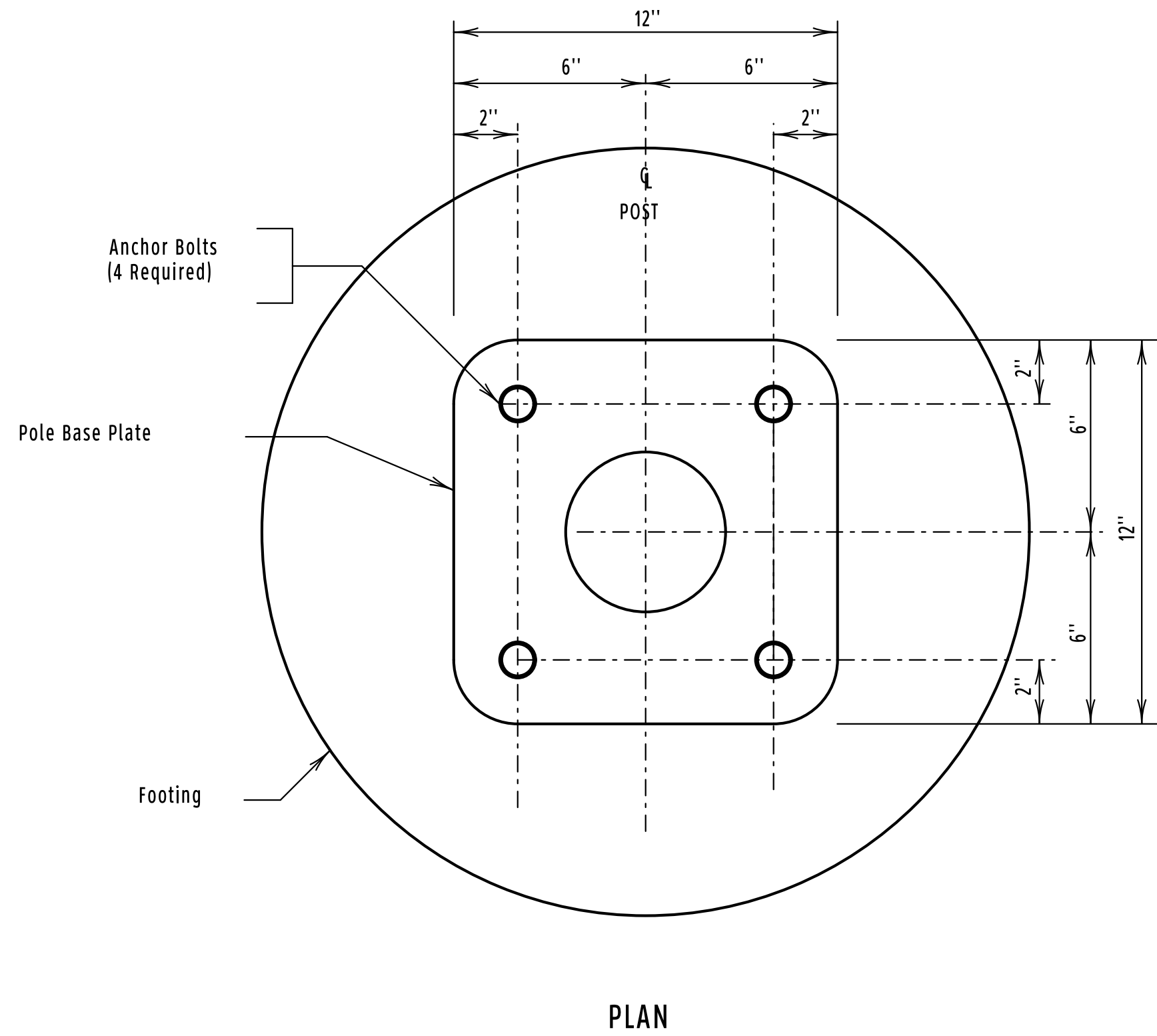


GATE STAND DETAIL  
NOTE: Gate must set level across the Road  
(For location of gate stand see Sheet No. 114 of 199)

ORIGINAL CONSTRUCTION PLANS

MISCELLANEOUS DETAILS FOR  
ROAD CLOSURE GATE  
S. D. DEPT. OF TRANSPORTATION  
DECEMBER 1996

MK	REVISION		DATED BY
DESIGNED BY	DRAWN BY	CHECKED BY	APPROVED
MODY4428	4428SE06		BRIDGE ENGINEER



ORIGINAL CONSTRUCTION PLANS

GATE POST BREAKAWAY DETAILS FOR  
ROAD CLOSURE GATE  
S. D. DEPT. OF TRANSPORTATION  
DECEMBER 1996

MK	REVISION		DATED BY
DESIGNED BY	DRAWN BY	CHECKED BY	APPROVED
MODY4428	4428SE07		BRIDGE ENGINEER