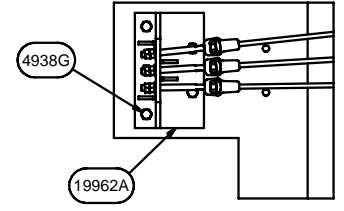
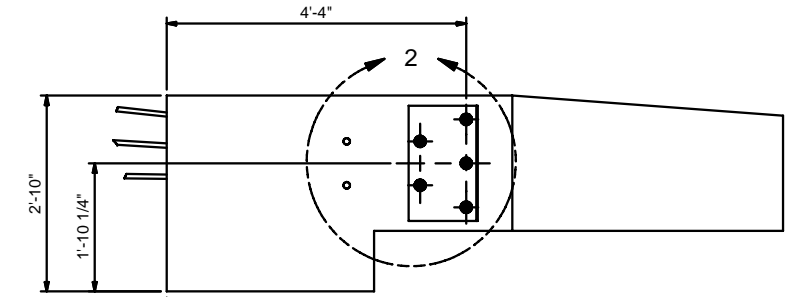
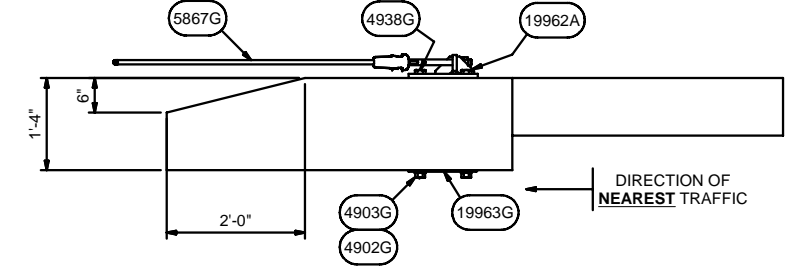


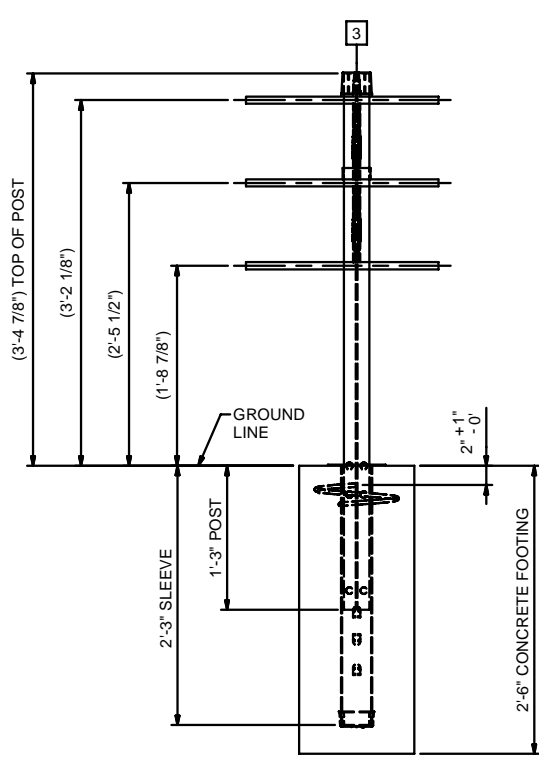
ELEVATION CASS-TL4 WALL ANCHOR



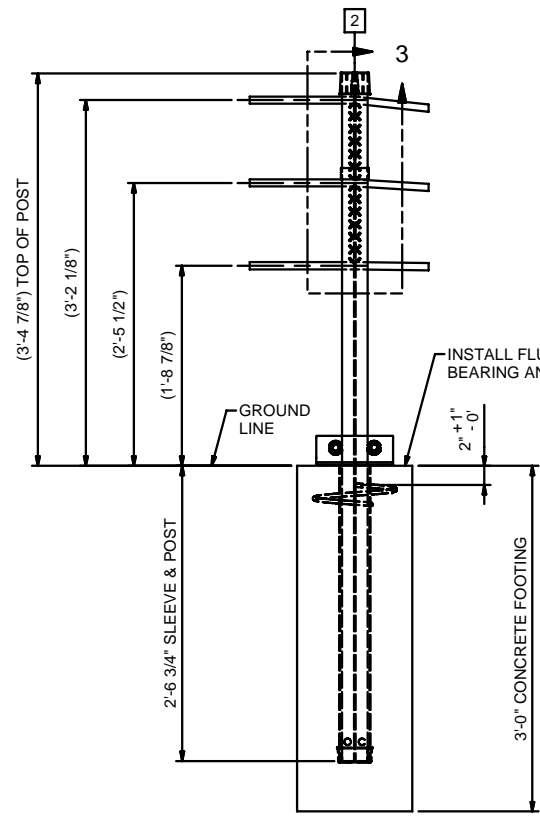
VIEW C-C  
(VIEW ROTATED 180°)



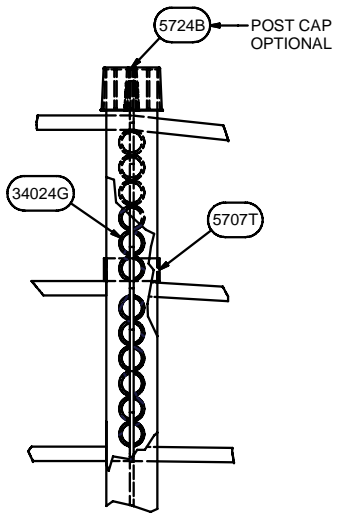
DETAIL 1



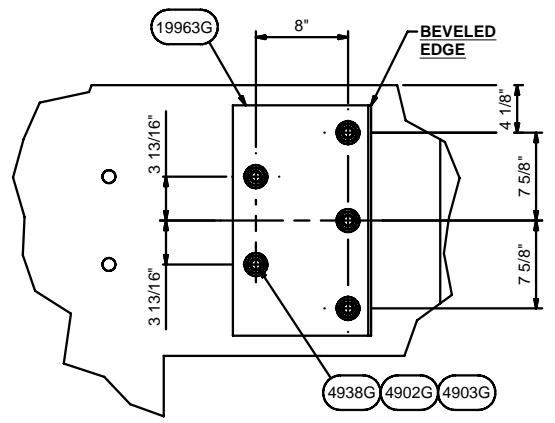
SECTION B-B  
SCALE .1



VIEW A-A



DETAIL 3



DETAIL 2

NOTE:  
 SEE CASS-TL4 STANDARD DRAWING SS-740 AND MANUALS FOR DESIGN CRITERIA, NOTES, INSTALLATION TOLERANCES, SPECIFICATIONS, AND APPLICABLE OPTIONS.

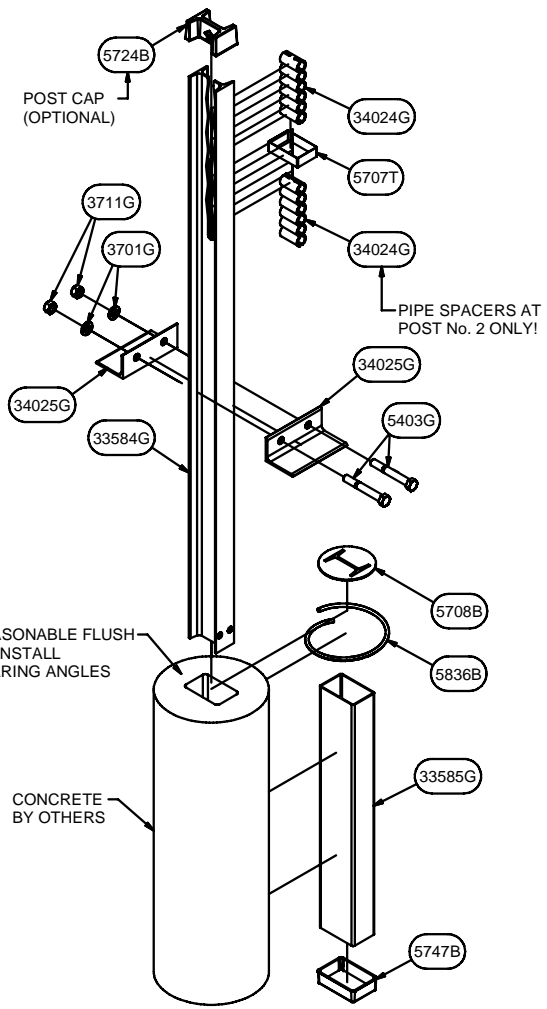
|                                                              |  |                       |  |
|--------------------------------------------------------------|--|-----------------------|--|
| WALL ANCHOR - CASS-TL4<br>3-CABLE GUARDRAIL<br>SAFETY SYSTEM |  | GALV SPEC:            |  |
|                                                              |  | SHIPPING WT:          |  |
|                                                              |  | DRW: E.A.S. 6/19/2008 |  |
|                                                              |  | CHK:                  |  |
|                                                              |  | SHT: 1 OF 2           |  |
|                                                              |  | SIZE: D               |  |
| TRINITY HIGHWAY<br>PRODUCTS, LLC                             |  | REV                   |  |
| CCP_TL4                                                      |  | 0                     |  |

| PARTS LIST - CASS-TL4 POST - LOCATION 3 - IN CONCRETE |         |                               |            |
|-------------------------------------------------------|---------|-------------------------------|------------|
| QTY                                                   | PART No | TITLE                         | Lbs / Each |
| 2                                                     | 5703B   | CASS-TL4 CABLE SPACER         | 0.24       |
| 1                                                     | 5707T   | CASS-TL - POST STRAP          | 0.23       |
| 1                                                     | 5708B   | SLEEVE COVER - CASS-TL POST   | 0.11       |
| 1                                                     | 5724B   | CASS-TL POST CAP              | 0.17       |
| 1                                                     | 5747B   | SLEEVE CAP - CASS-TL POST     | 0.15       |
| 1                                                     | 5836B   | CONCRETE REINFORCING RING     | 0.88       |
| 1                                                     | 33954G  | CASS-TL4 POST - SHORT         | 34.38      |
| 1                                                     | 33957G  | CASS-TL4 POST - LONG          | 50.62      |
| 1                                                     | 33982G  | 27" POST SLEEVE - IN CONCRETE | 14.48      |

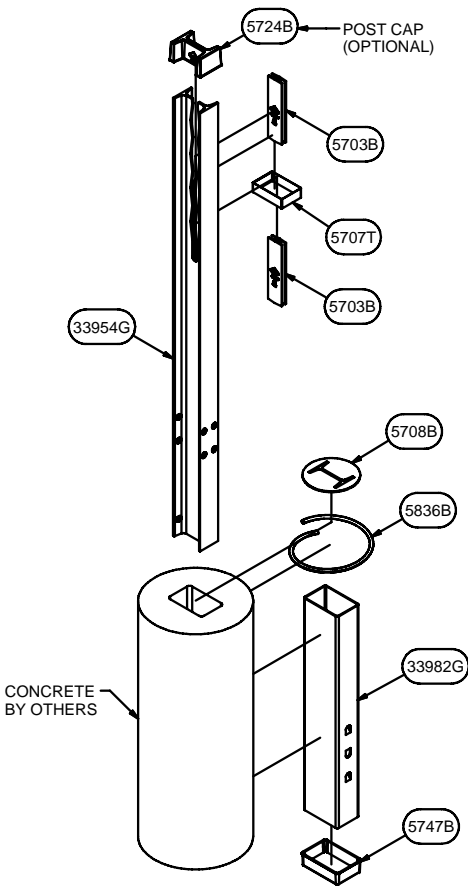
| PARTS LIST - ANCHOR HARDWARE - CCP-TL4 |         |                                      |            |
|----------------------------------------|---------|--------------------------------------|------------|
| QTY                                    | PART No | TITLE                                | Lbs / Each |
| 8                                      | 4902G   | 1" FLAT WASHER (F436)                | 0.11       |
| 11                                     | 4903G   | 1" HEX NUT (A194 2H)                 | 0.33       |
| 5                                      | 4938G   | 1" HEAVY HEX BOLT x 18" (A325)       | 4.45       |
| 3                                      | 5867G   | CCA - ANCHOR CABLE ASSEMBLY [25'-0"] | 30.90      |
| 1                                      | 19962A  | CCP - WALL ANCHOR BRACKET (FRONT)    | 63.89      |
| 1                                      | 19963G  | CCP - WALL ANCHOR PLATE (BACK)       | 16.51      |

| PARTS LIST - CASS-TL4 POST - LOCATION 2 - IN CONCRETE |         |                                      |            |
|-------------------------------------------------------|---------|--------------------------------------|------------|
| QTY                                                   | PART No | TITLE                                | Lbs / Each |
| 2                                                     | 3701G   | 3/4 FLAT WASHER (F436)               | 0.01       |
| 2                                                     | 3711G   | 3/4 HEX NUT (A194 2H)                | 0.02       |
| 2                                                     | 5403G   | 3/4 HEX BOLT x 5 1/2" (A325)         | 0.11       |
| 1                                                     | 5707T   | CASS-TL - POST STRAP                 | 0.23       |
| 1                                                     | 5708B   | SLEEVE COVER - CASS-TL POST          | 0.11       |
| 1                                                     | 5724B   | CASS-TL POST CAP                     | 0.17       |
| 1                                                     | 5747B   | SLEEVE CAP - CASS-TL POST            | 0.15       |
| 1                                                     | 5836B   | CONCRETE REINFORCING RING            | 0.88       |
| 1                                                     | 33584G  | CASS-TL4 - CCA ANCHOR POST #1        | 44.72      |
| 1                                                     | 33585G  | 30 3/4" CASS-TL POST SLEEVE - CCA #1 | 16.41      |
| 12                                                    | 34024G  | 1" PIPE SPACER (A53 Gr.B)            | 0.31       |
| 2                                                     | 34025G  | CASS-TL BEARING ANGLE (A36)          | 3.81       |

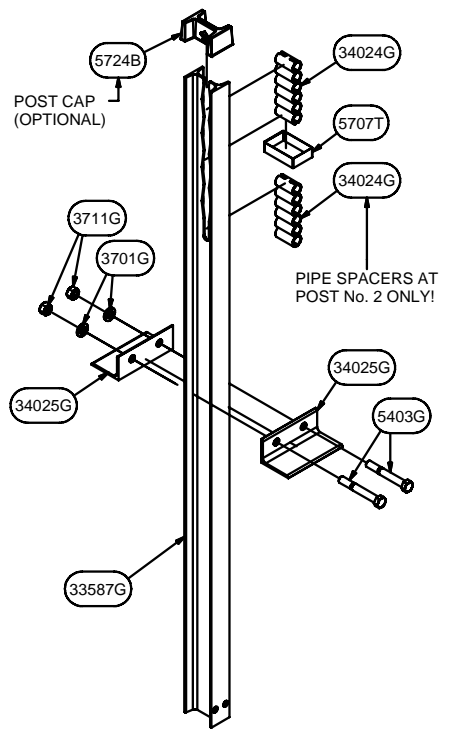
| PARTS LIST - CASS-TL4 POST - LOCATION 2 - DRIVEN |         |                                        |            |
|--------------------------------------------------|---------|----------------------------------------|------------|
| QTY                                              | PART No | TITLE                                  | Lbs / Each |
| 2                                                | 3701G   | 3/4 FLAT WASHER (F436)                 | 0.01       |
| 2                                                | 3711G   | 3/4 HEX NUT (A194 2H)                  | 0.02       |
| 2                                                | 5403G   | 3/4 HEX BOLT x 5 1/2" (A325)           | 0.11       |
| 1                                                | 5707T   | CASS-TL - POST STRAP                   | 0.23       |
| 1                                                | 5724B   | CASS-TL POST CAP                       | 0.17       |
| 1                                                | 33587G  | CASS-TL4 - CCA ANCHOR POST #1 - DRIVEN | 50.73      |
| 12                                               | 34024G  | 1" PIPE SPACER (A53 Gr.B)              | 0.31       |
| 2                                                | 34025G  | CASS-TL BEARING ANGLE (A36)            | 3.81       |



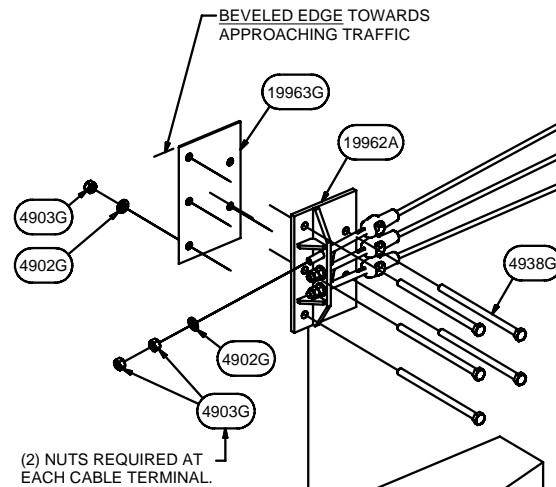
CASS-TL4 POST - LOCATION 2  
(IN CONCRETE)



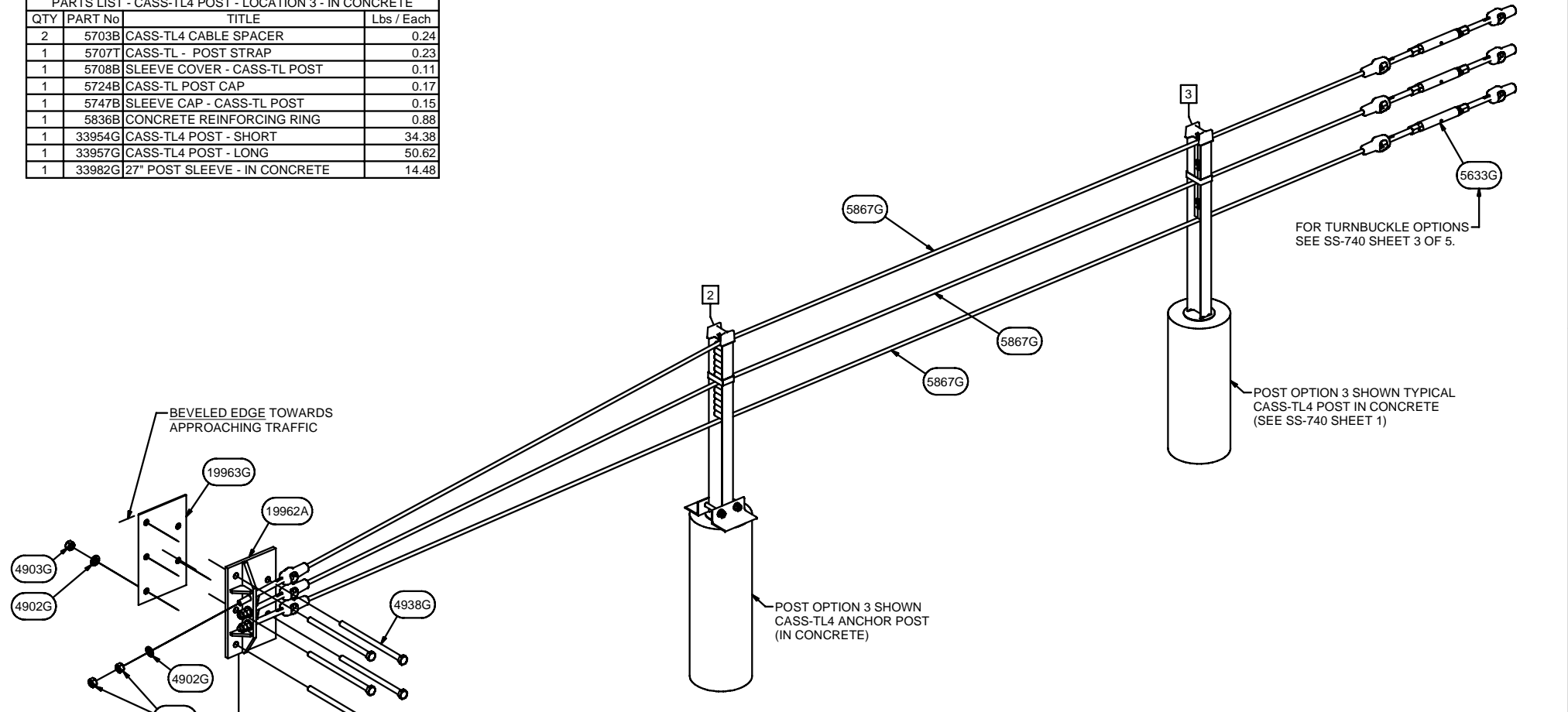
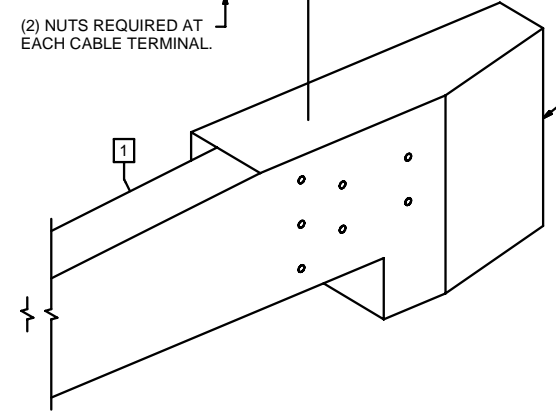
CASS-TL4 POST - LOCATION 3  
(TYPICAL CASS-TL4 SYSTEM POST IN CONCRETE)



CASS-TL4 POST - LOCATION 2  
(DRIVEN)



CASS-TL4 WALL ANCHOR  
(CONCRETE OPTION SHOWN)



**WALL ANCHOR - CASS-TL4  
3-CABLE GUARDRAIL  
SAFETY SYSTEM**

TRINITY HIGHWAY  
PRODUCTS, LLC

GALV SPEC:  
SHIPPING WT:  
DRW: E.A.S. 6/19/2008  
CHK:  
SHT: 2 OF 2 SIZE: D  
DWG NO: CCP\_TL4 REV: 0